

BASEMENT FLOOR PLAN
BIOMEDICAL BIOLOGICAL SCIENCE RESEARCH BUILDING
39,722 Gross Square Feet

3/3/21

JH

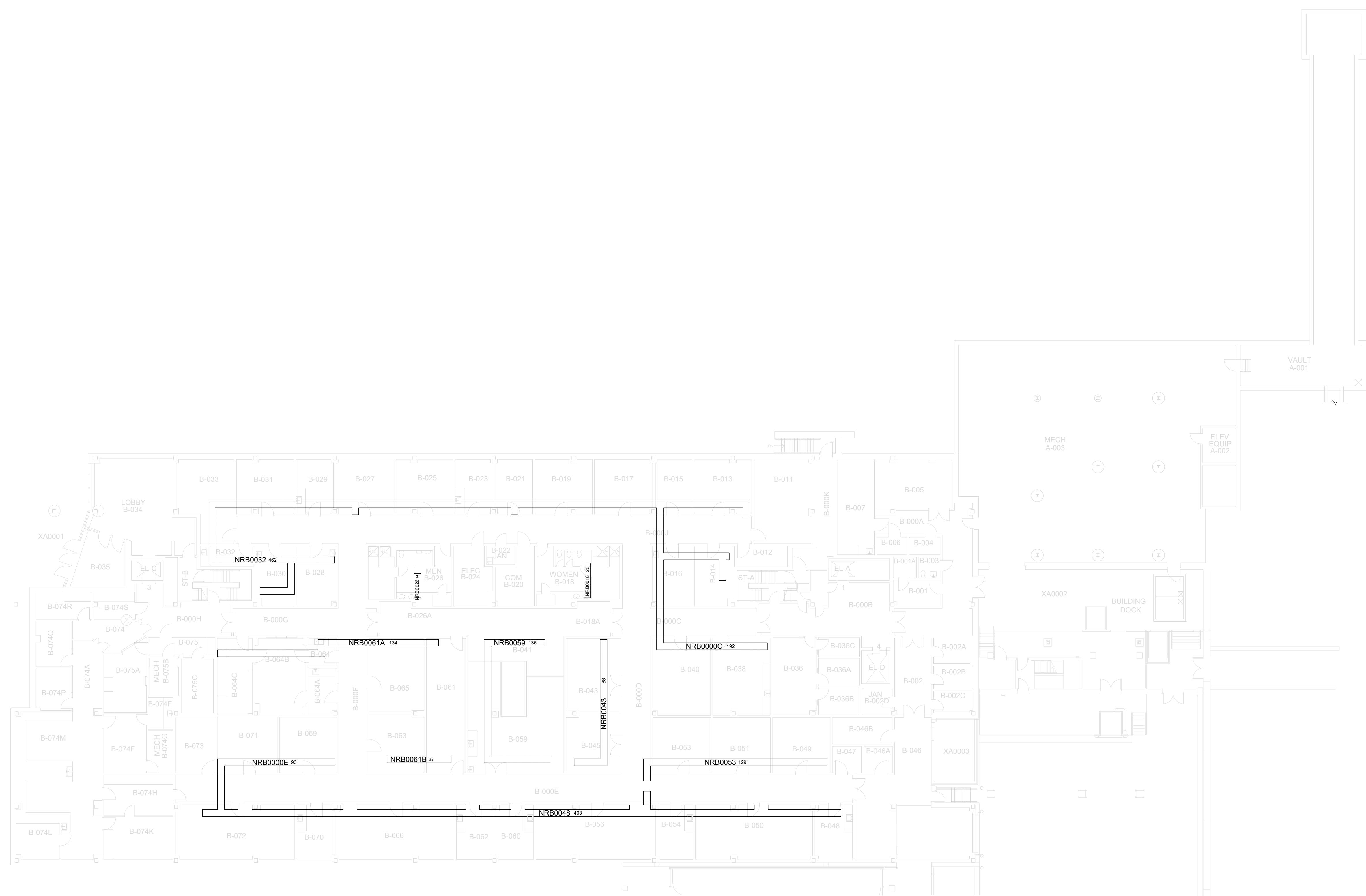
DATE:
02-18-13
DRAWN BY:
NW

BLDG #:
0509

BBSRB
KEY DRAWING

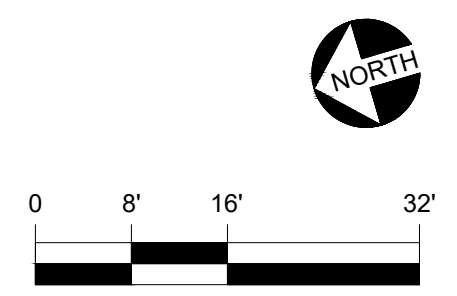
UNIVERSITY OF KENTUCKY
ITS Information Services

SHEET
2 of 8



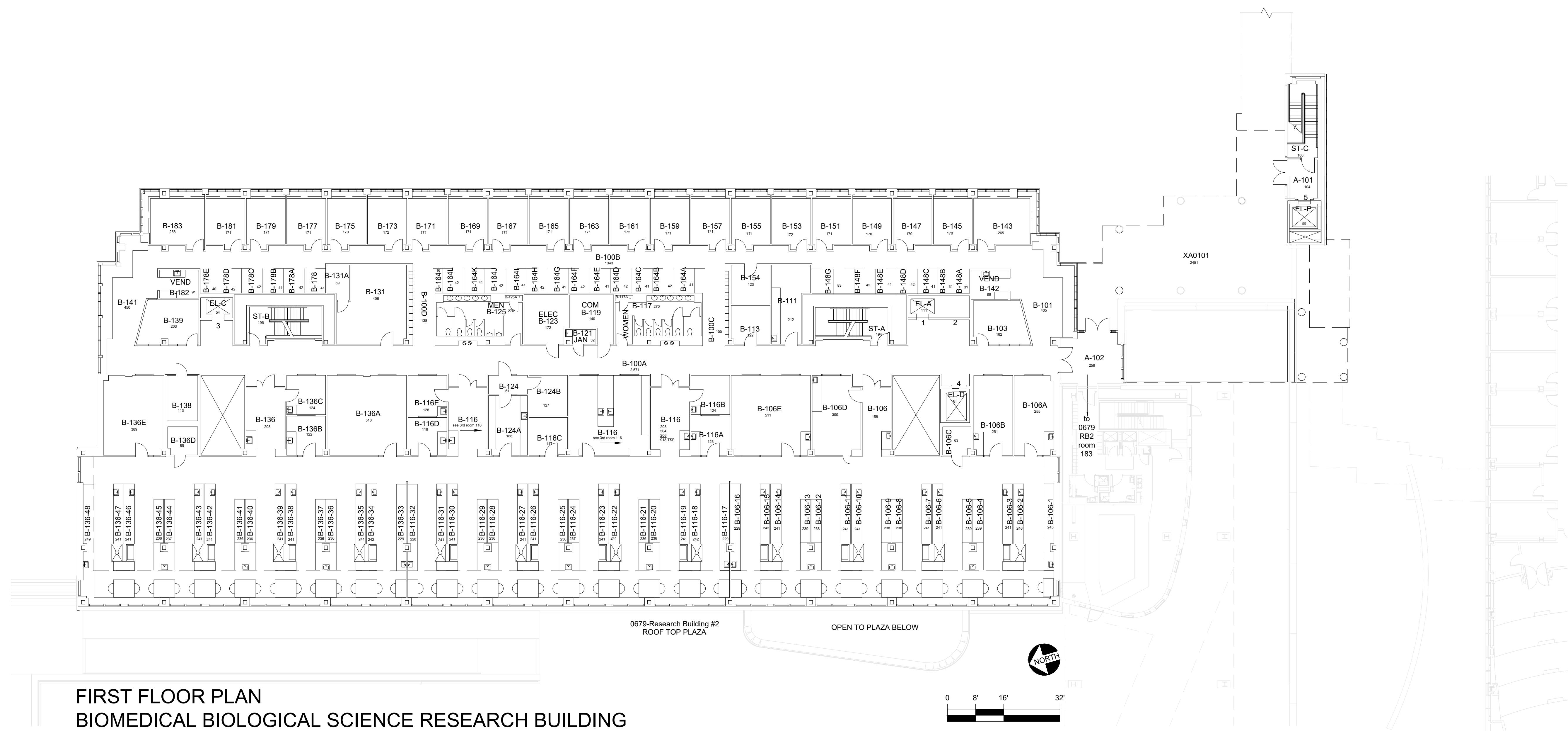
INTERSTITIAL FLOOR PLAN
BIOMEDICAL BIOLOGICAL SCIENCES RESEARCH BUILDING

1,579 Gross Square Ft.



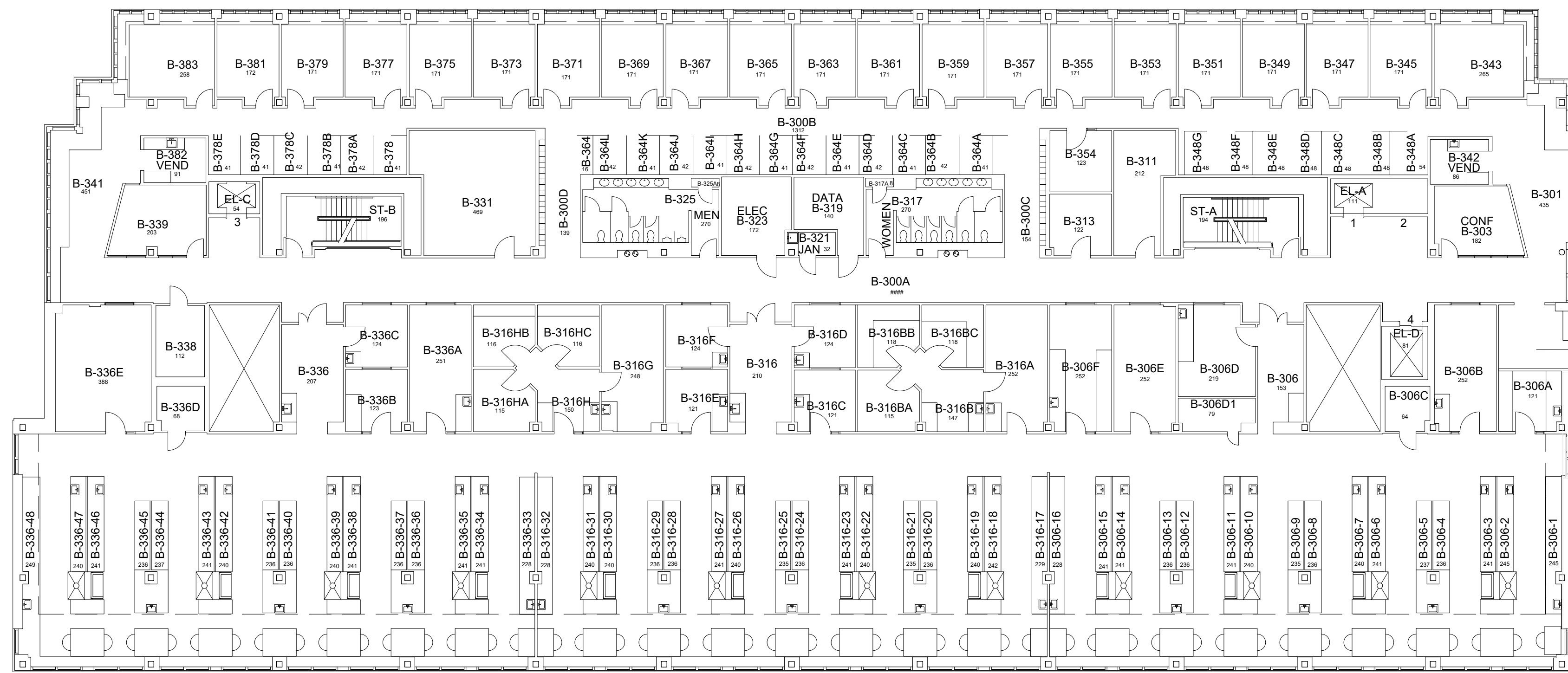
9-18-18

JES



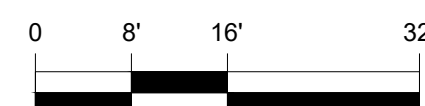
FIRST FLOOR PLAN
BIOMEDICAL BIOLOGICAL SCIENCE RESEARCH BUILDING
36,121 Gross Square Feet

AKN 9-18-18



**THIRD FLOOR PLAN
BIOMEDICAL BIOLOGICAL SCIENCE RESEARCH BUILDING**

32,692 Gross Square Feet

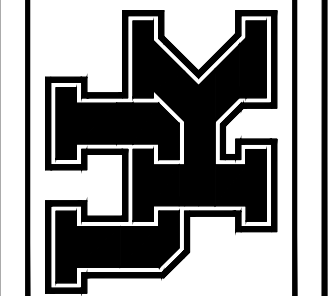


DATE:
02-18-13
DRAWN BY:
NW

BLDG #:
0509

BBSRB
KEY DRAWING

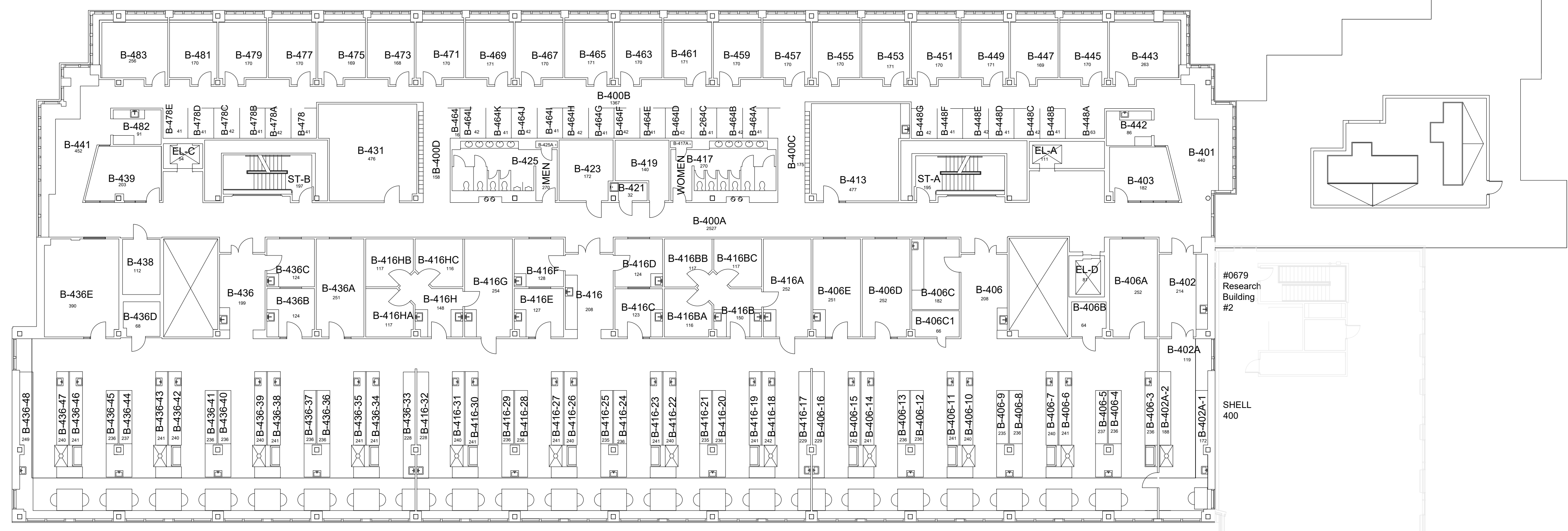
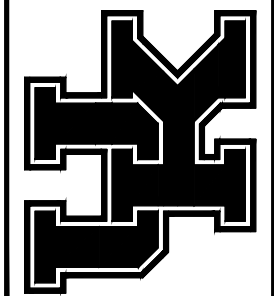
UNIVERSITY OF KENTUCKY
ITS Information Services



SHEET
5 of 8

10/01/18

JES

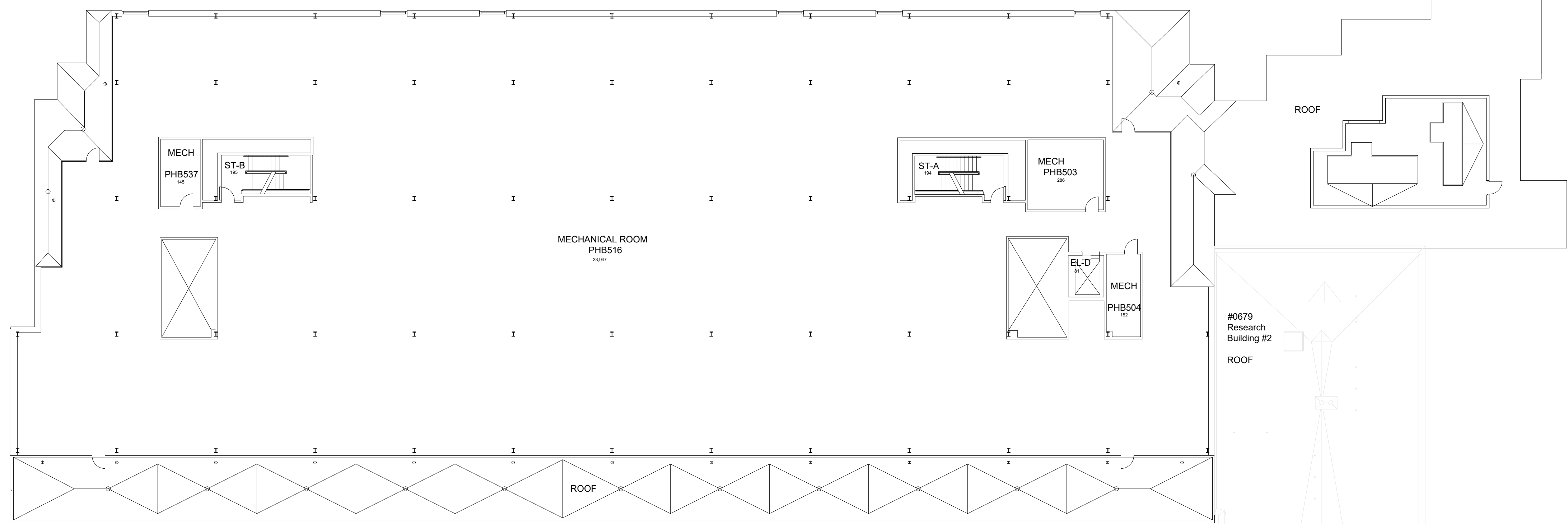


FOURTH FLOOR PLAN
BIOMEDICAL BIOLOGICAL SCIENCE RESEARCH BUILDING

32,687 Gross Square Feet

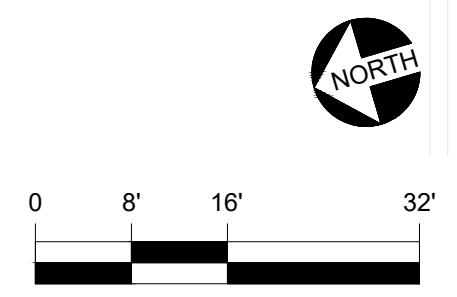
9-18-18

JES



**PENTHOUSE FLOOR PLAN
BIOMEDICAL BIOLOGICAL SCIENCE RESEARCH BUILDING**

26,652 Gross Square Feet



DATE:
02-18-13
DRAWN BY:
NW

BLDG #:
0509

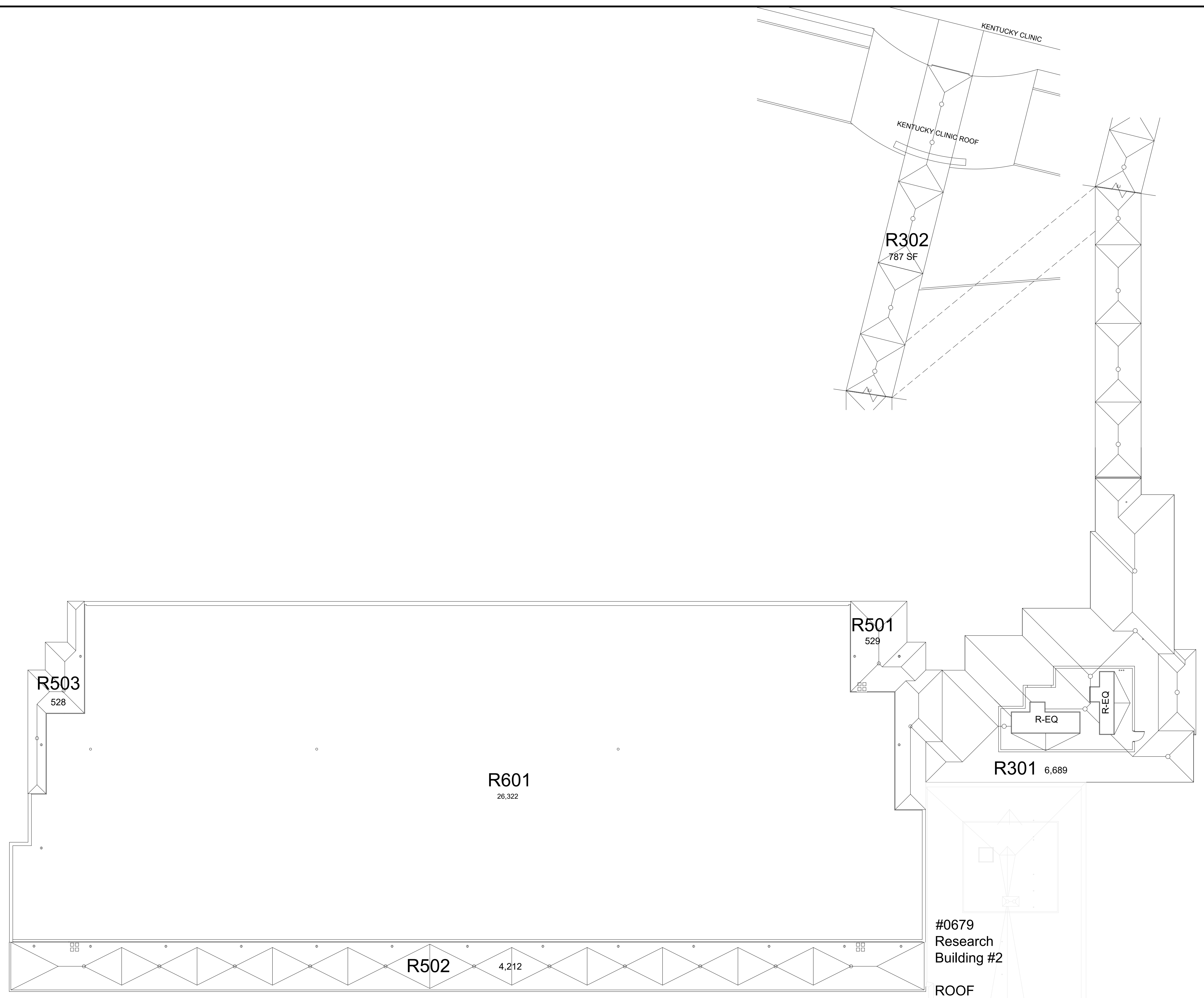
BBSRB
KEY DRAWING

UNIVERSITY OF KENTUCKY
ITS Information Services

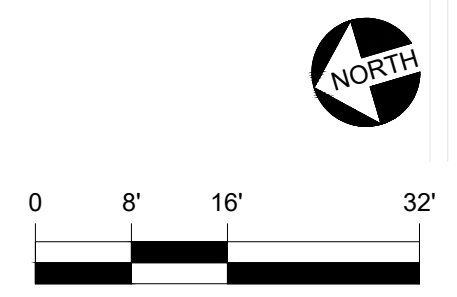
SHEET
8 OF 8

9-18-18

JES



ROOF PLAN
 BIOMEDICAL BIOLOGICAL SCIENCE RESEARCH BUILDING

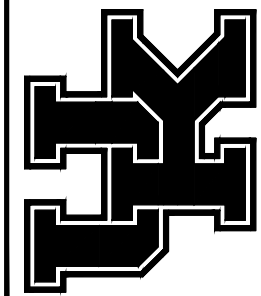


DATE:
 02-18-13
 DRAWN BY:
 NW

BLDG #:
 0509

BBSRB
KEY DRAWING

UNIVERSITY OF KENTUCKY
 ITS Information Services



SHEET
 8 OF 8

9-18-18

JES