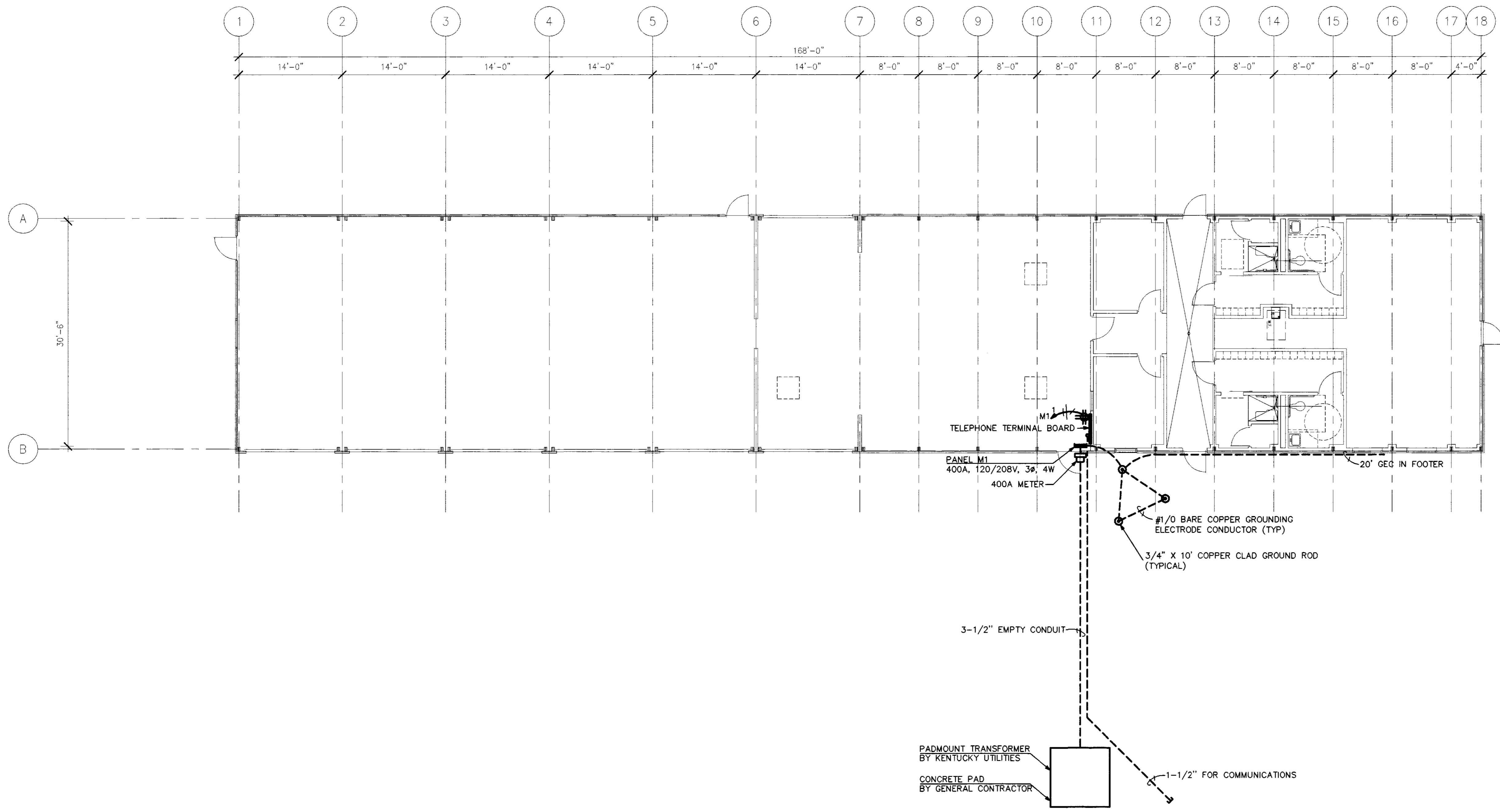


NOTICE: THIS DOCUMENT CONTAINS SUBJECT MATTER CONSIDERED CONFIDENTIAL BY PARSONS ELECTRIC, INC., AND ON WHICH PARSONS ELECTRIC, INC., HAS PROPERTY RIGHTS. NEITHER RECEIPT NOR POSSESSION THEREOF CONFERS OR TRANSFERS ANY RIGHTS TO REPRODUCE THE DOCUMENT OR ANY PART THEREOF, OR TO DISCLOSE ANY INFORMATION CONTAINED THEREIN TO OTHERS, OR TO USE IT FOR ANY PURPOSE WITHOUT THE WRITTEN PERMISSION OF PARSONS ELECTRIC, INC.



A ELECTRICAL SERVICE PLAN
SCALE: 1/8" = 1' - 0"

GENERAL NOTES

1. ALL CONDUCTORS SHALL BE #12 AWG COPPER UNLESS NOTED OTHERWISE.
2. MINIMUM CONDUIT REQUIREMENTS: ABOVE GROUND SHALL BE 3/4" EMT WITH COMPRESSION TYPE FITTINGS; BELOW GROUND SHALL BE 3/4" SCHEDULE 40 PVC.
3. PROVIDE 4#500, 3-1/2" CONDUIT FROM METER TO PANEL M1.
4. PANEL M1 SHALL BE SERVICE ENTRANCE RATED, 400A MAIN CIRCUIT BREAKER, 120/208V, 3Ø, 4W, 22K AIC. PANEL M1 SHALL CONTAIN THE FOLLOWING BRANCH CIRCUIT BREAKERS: (1) 30A/3P, (1) 125A/2P, (2) 30A/2P, AND (33) 20A/1P.

Parsons
Electrical Contractors
116 Trade Street
Louisville, KY 40202
Phone (859) 233-9823 Fax (859) 233-2185
WWW.PARSONSELECTRIC.COM

Parsons Project #
08064

UNIVERSITY OF KENTUCKY SOUTH FARM
AGRICULTURE EQUIPMENT BUILDING
NICHOLASVILLE ROAD
ELECTRICAL SERVICE PLAN

DENHAM-BLYTHE CO. INC.
ENGINEERS AND ARCHITECTS
100 SPRINGFIELD HIGHWAY
LOUISVILLE, KY 40204
PHONE (502) 251-7205
FAX (502) 251-4273

REV	DATE	ISSUED FOR

Drawn By: JHS
Approved By: JHS
DATE: 9-9-08
JOB NUMBER: 08-280

E-1.0

GENERAL NOTES

- ALL WATER PIPING TO BE COPPER, ALL SANITARY AND VENT PIPING TO BE PVC. ALL GAS PIPING TO BE BLACK STEEL ABOVE GRADE, HDPE PLASTIC WITH FUSION WELDED JOINTS BELOW GRADE.
 - 2008 INTERNATIONAL MECHANICAL CODE VENTILATION REQUIREMENTS INCLUDED FOR REFERENCE:
TABLE 403.3: REQUIRED OUTDOOR VENTILATION AIR -
Repair garages - 1.5 cfm/R2
502.14 Motor vehicle operation. In areas where motor vehicles operate, mechanical ventilation shall be provided in accordance with Section 403. Additionally, areas in which stationary motor vehicles are operated shall be provided with a source capture system that connects directly to the motor vehicle exhaust systems.
- Exceptions:
1. This section shall not apply where the motor vehicles being operated or repaired are electrically powered.
2. This section shall not apply to one- and two-family dwellings.
3. This section shall not apply to motor vehicle service areas where engines are operated inside the building only for the duration necessary to move the motor vehicles in and out of the building.

MARK	MANUFACTURER	MODEL #	CFM	SONES	ESP	RPM	HP	VOLT/PH/Hz	REMARKS
EF-1	LOREN COOK	24S100	2000	7.7	0.25"	670	1/4	120/1/60	1,4

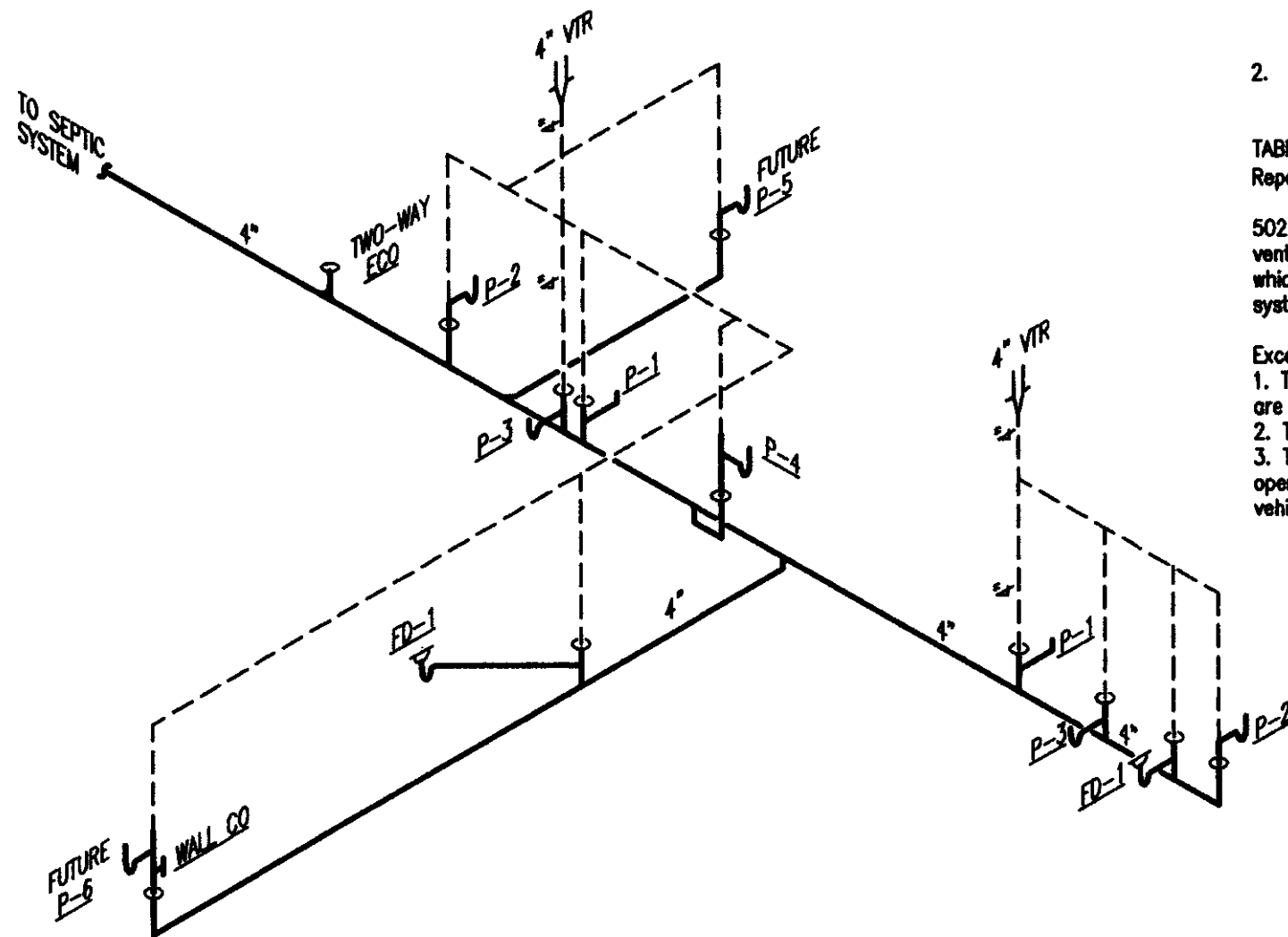
- REMARKS:
1. PROVIDE RUBBER IN SHEAR VIBRATION ISOLATION KIT.
2. PROVIDE HEAVY DUTY DISCONNECT SWITCH.
3. FAN TO RUN CONTINUOUSLY. PROVIDE SNAP SWITCH DISCONNECT AT FAN.
4. PROVIDE WITH WEATHER HOOD, WALL SHUTTER AND OSHA WIRE GUARD.

MARK	MANUFACTURER	MODEL	MOUNTING	CFM	FREE AREA SQ. FT.	LOUVER DIMS. (L x W x H)	PD	FACE VEL.	REMARKS
L-1	GREENHECK	ESD-403	FLANGED	2000	2.86	30x30	.075" WC	700	1

- NOTES: DIMENSIONS ARE ROUGH OPENING DIMENSIONS. ADJUST LOUVER SIZE 3/4" EACH DIMENSION FOR FIT AND CAULKING, ETC.
REMARKS:
1. PROVIDE WITH ALUMINUM INTERIOR BRD SCREEN

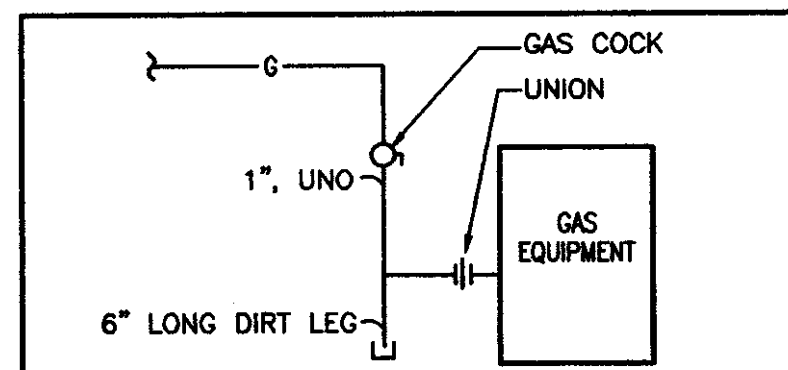
SHEET NOTES

- ROUGH IN 1-1/2" CAPPED SAN ABOVE SLAB, 1-1/2" VENT, 1/2" HW, 1/2" CW DOWN IN WALL WITH STOPS FOR FUTURE SINK.
- STUB 2" BLACK STEEL G THRU EXTERIOR WALL AT 36" AFF AND SEAL OPENING WEATHER TIGHT. RISE TO 10" AFF AND PROVIDE GAS SHUTOFF AND CAP FOR FUTURE.
- STUB HW CW DOWN TO 72" AFF WITH BALL VALVES FOR FUTURE WATER HEATER. LINE SIZE WATTS 909 OR EQUAL RBPB AT 36" AFF. EXTEND PVC DRAIN OUT EXTERIOR WALL AT 24" AFF AND SEAL WATER TIGHT. RISE CW UP TIGHT TO WALL TO ABOVE OFFICE CEILING.
- PROVIDE BALL VALVE AND DRAIN VALVE IN DRAINDOWN PIT.
- RISE GAS WITH PLASTIC TO STEEL TRANSITION RISER SECURED TO UNSTRUT FRAME AT THIS LOCATION. PROVIDE REGULATOR, VALVES, ETC. PER RISER DETAIL. ALL NEW BURIED PIPING SHALL BE POLYETHYLENE WITH BUTT FUSION JOINTS, WARNING TAPE AND TRACER WIRE.
- EXTEND 1" HDPE PLASTIC G TO EXIST 5 PSIG MAIN, APPROX 6' EAST OF REPAIR FACILITY. FIELD VERIFY DISTANCE TO MAIN.
- EXTEND 1-1/4" CW TO EXIST. CW MAIN, APPROX 80' EAST OF REPAIR FACILITY, AT NEAR EDGE OF FARM ROAD. FIELD VERIFY DISTANCE TO MAIN. PROVIDE CURB VALVE AND CURB BOX IN BRANCH AT MAIN.
- 30X30X12" LONG SM PLENUM WITH 30X30 LOW LEAKAGE MOTORIZED DAMPER. INTERLOCK DAMPER MOTOR WITH EXHAUST FAN EF-1. INSTALL LOUVER AT 7'-0" AFF.
- POWER EXHAUST FAN THROUGH WALL SWITCH LOCATED ON WALL BELOW FAN. INTERLOCK POWER WITH INTAKE LOUVER DAMPER MOTOR. INSTALL FAN AT 7'-0" AFF.

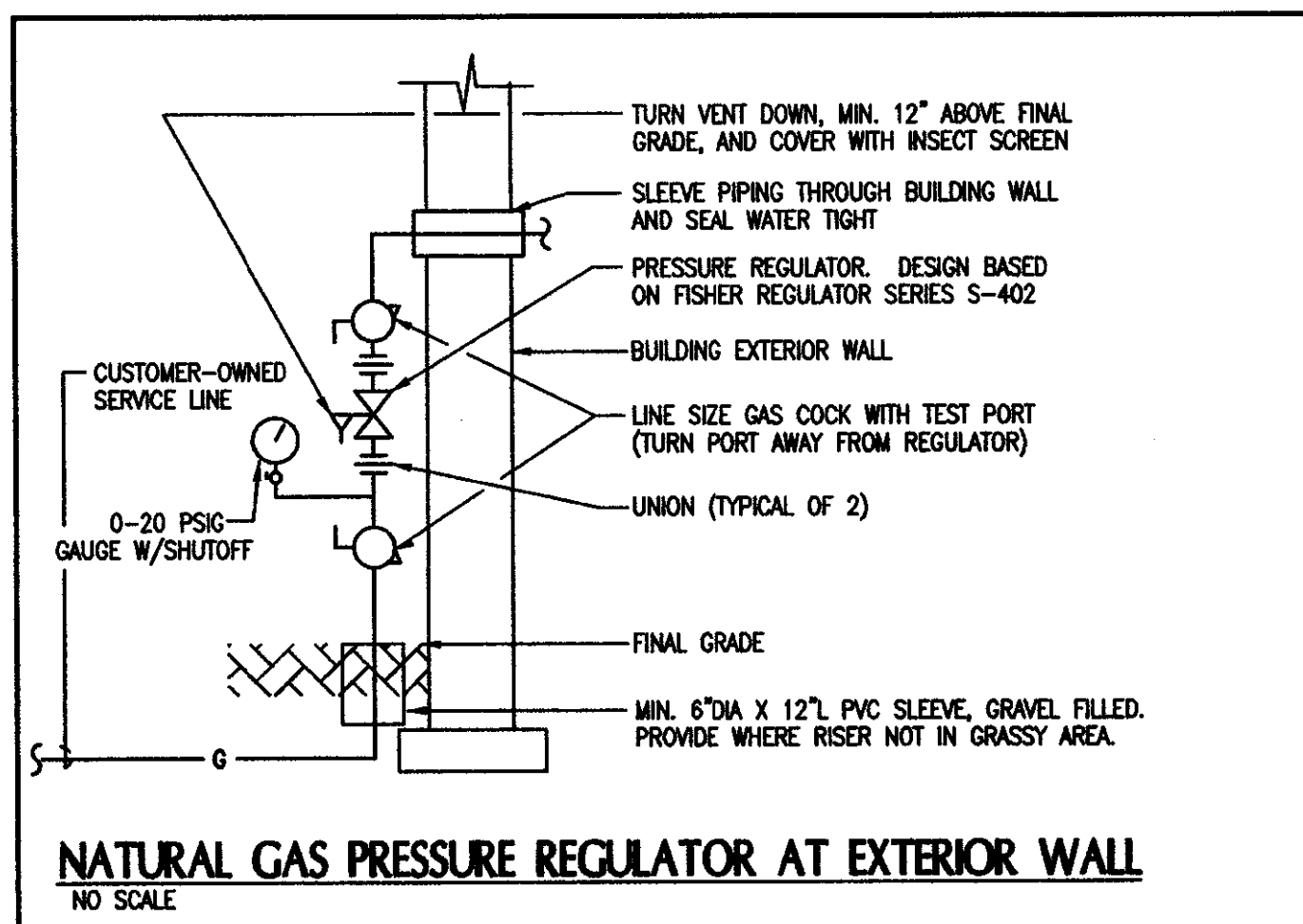


SANITARY WASTE AND VENT RISER DIAGRAM

ALL SANITARY AND VENT PIPING SHALL BE 2" SIZE UNLESS OTHERWISE NOTED.



TYPICAL GAS DROP TO EQUIPMENT
NOT TO SCALE



NATURAL GAS PRESSURE REGULATOR AT EXTERIOR WALL
NO SCALE

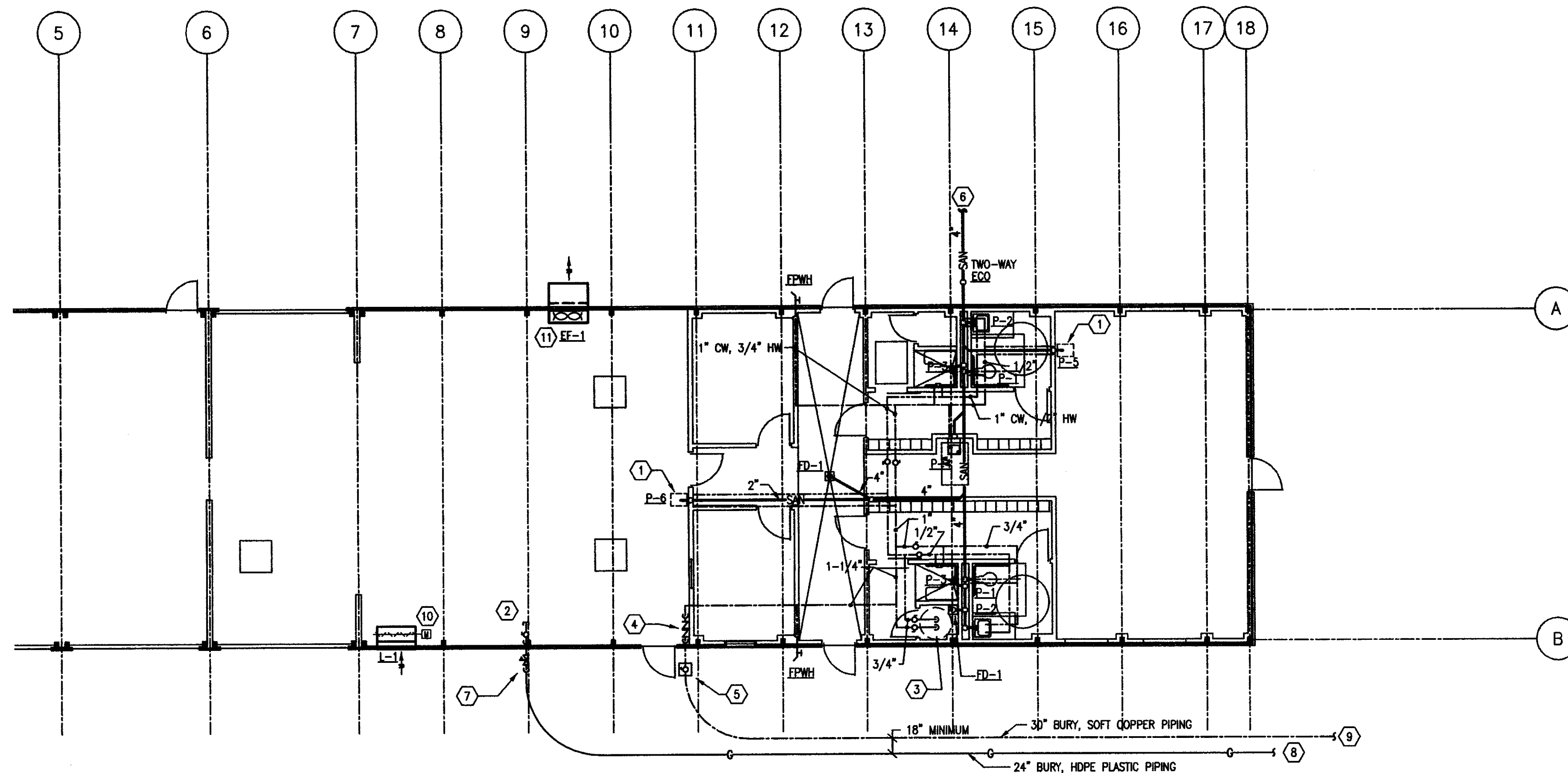
MARK	ITEM	CW	HW	WASTE	DESCRIPTION
FD-1	FLOOR DRAIN	1/2"	-	4"	ZURN #Z415 FLOOR DRAIN WITH TYPE N STRAINER, AND TRAP DRAIN WITH 1/2" TRAP PRIMER CONNECTION.
FPWH	WALL HYDRANT	1/2"	-	-	WOODFORD MODEL 65, AUTOMATIC DRAINING, FREEZELESS, WITH VACUUM BREAKER, LOOSE KEY.

MARK	ITEM	CW	HW	WASTE	DESCRIPTION
P-1	ADA WATER CLOSET	1"	-	4"	FLOOR SET, ADA TYPE, WITH FLUSH VALVE.
P-2	ADA LAVATORY	1/2"	1/2"	1-1/2"	WALL HUNG LAVATORY WITH WALL CARRIER.
P-3	SHOWER	1/2"	1/2"	2"	SHOWER STALL.
P-4	DRINKING FOUNTAIN	1/2"	1/2"	1-1/2"	WALL HUNG, BI LEVEL.
P-5	HAND SINK	1/2"	1/2"	1-1/2"	COUNTER TOP DROP IN TYPE.
P-6	LAUNDRY TUB	1/2"	1/2"	1-1/2"	FLOOR SET.

NOTES:
1. PROVIDE ZURN 1700 SERIES "SHOKTROL" OR EQUAL WATER HAMMER ARRESTORS AT EACH FIXTURE OR FIXTURE GROUP.
2. PROVIDE TRAP PRIMER ON ALL FLOOR DRAINS.
3. PROVIDE STOPS AT ALL FIXTURE ROUGH INS. STOPS SHALL BE 1/4 TURN BALL VALVES, BRASS CONSTRUCTION, CHROME PLATED, BRASSCRAFT KT SERIES OR APPROVED EQUAL.

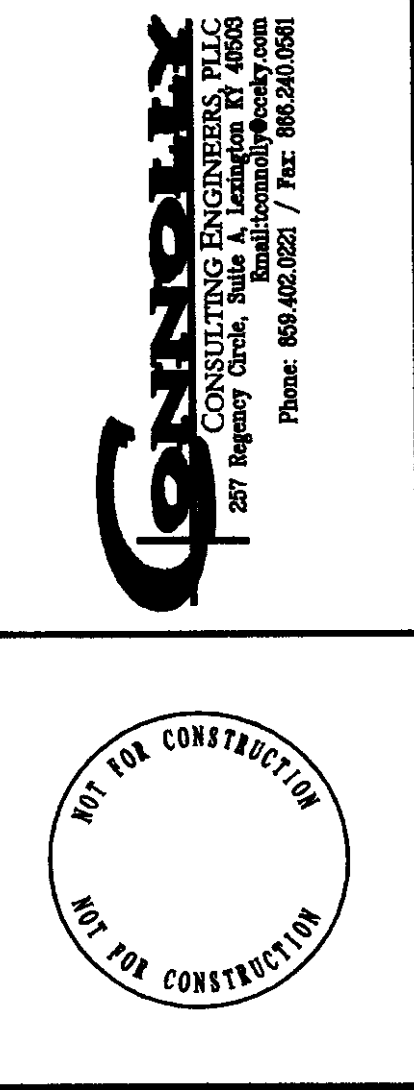
TAG #	INLET PRESS.	OUTLET PRESS.	DESIGN FLOW (CFH)	MAXIMUM FLOW (CFH)	BODY SIZE	ORIFICE SIZE	BASIS OF DESIGN	NOTES
GR-1	5 PSIG	7" W.C.	255	450	3/4"	3/16"	FISHER MODEL S-402	1,2,3,4,5

NOTES:
1. WITH LISTED CAPACITY INTERNAL RELIEF
2. RATED CAPACITY AT 1" W.C. DROOP.
3. SPRING ADJUSTABLE FROM 5" TO 9" W.C. OUTLET PRESSURE.
4. EXTEND VENT FULL SIZE TO LOCATION AND IN MANNER APPROVED BY CODE.
5. REGULATOR MAX INLET PRESSURE SHALL BE 125 PSIG.
6. METER OUTLET PRESSURE IS CURRENTLY APPROX 10 PSIG.



FIRST FLOOR PLUMBING PLAN

SCALE: 1/8" = 1'-0"
0 1' 2' 4' 8' 16' 24' 32'



UNIVERSITY OF KENTUCKY
LEXINGTON, KENTUCKY
SOUTH FARM
FARM EQUIPMENT REPAIR FACILITY
MECHANICAL PLAN

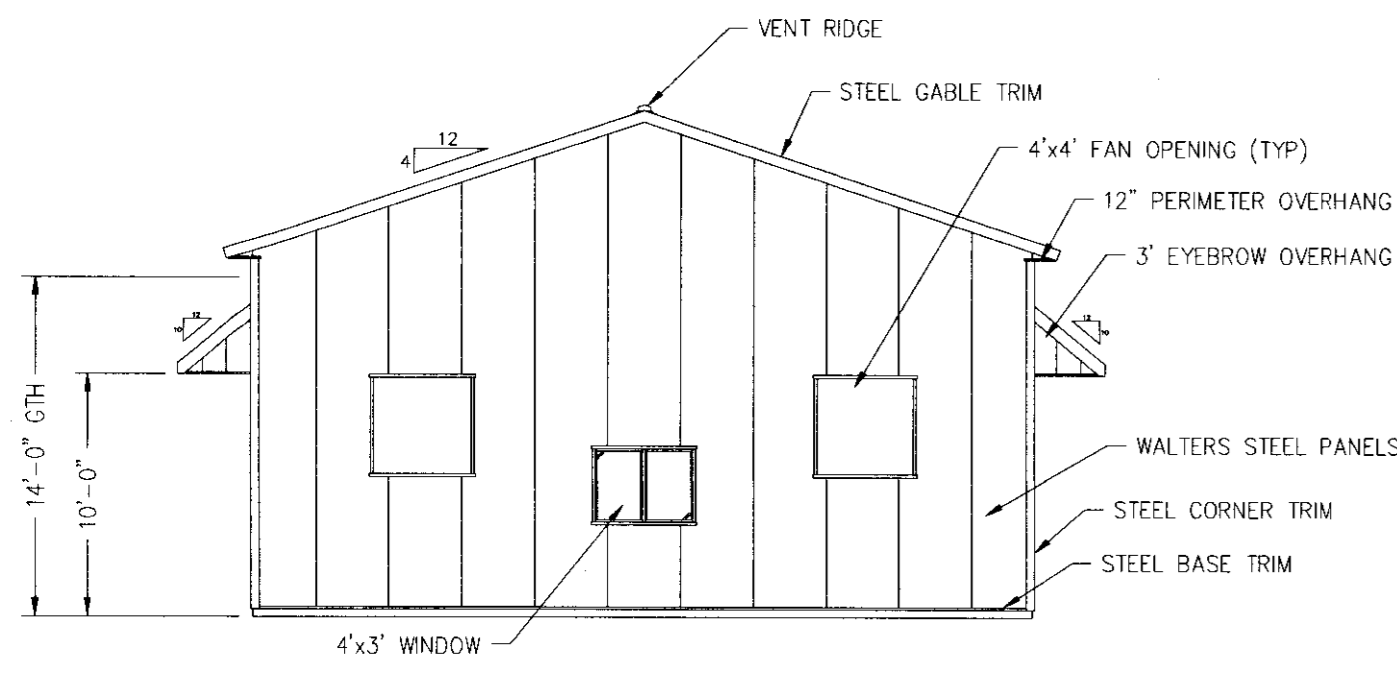
DENHAM-BLYTHE CO., INC.
- ENGINEERS AND CONSTRUCTORS -
100 TRADE STREET
LEXINGTON, KY 40511
PHONE: 606-253-4073
FAX: 606-253-2248

NO.	DATE	ISSUED FOR

MANAGER: TBC
DESIGNER: JCY
ORIGINAL DATE: 10-01-2008
JOB NUMBER: P08-280

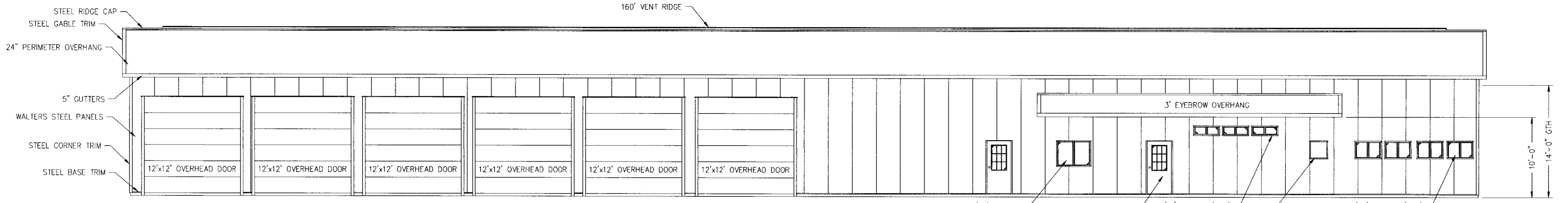
MECHANICAL SYSTEMS
ROUGH-IN PLAN
M-1.0

NOTICE: THIS DOCUMENT DISCLOSES SUBJECT MATTER CONSIDERED CONFIDENTIAL BY DENHAM-BLYTHE, INC. AND ON WHICH DENHAM-BLYTHE, INC. HAS PROPERTY RIGHTS. NEITHER RECEIPT NOR POSSESSION THEREOF CONFERS OR TRANSFERS ANY RIGHTS TO REPRODUCE THE DOCUMENT OR ANY PART THEREOF, OR TO DISCLOSE ANY INFORMATION CONTAINED THEREIN TO OTHERS, OR TO USE IT FOR ANY PURPOSE WITHOUT THE WRITTEN PERMISSION OF DENHAM-BLYTHE, INC.



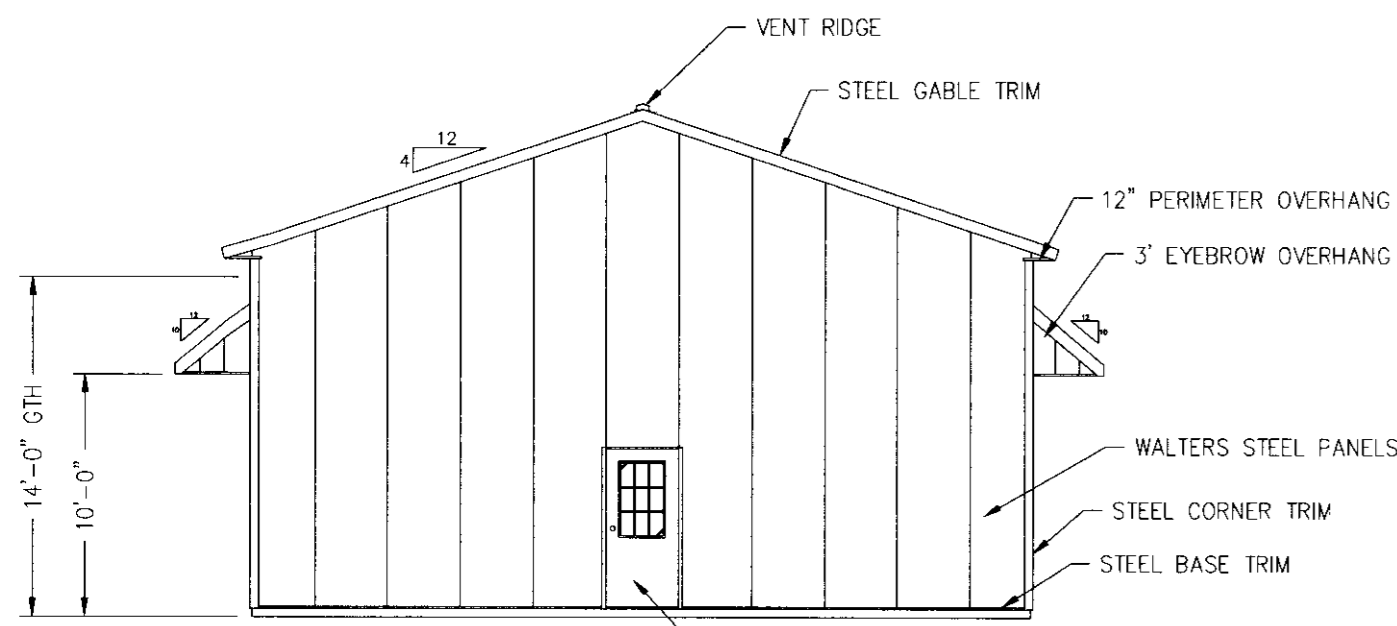
LEFT END ELEVATION

SCALE: 1/8" = 1'-0"



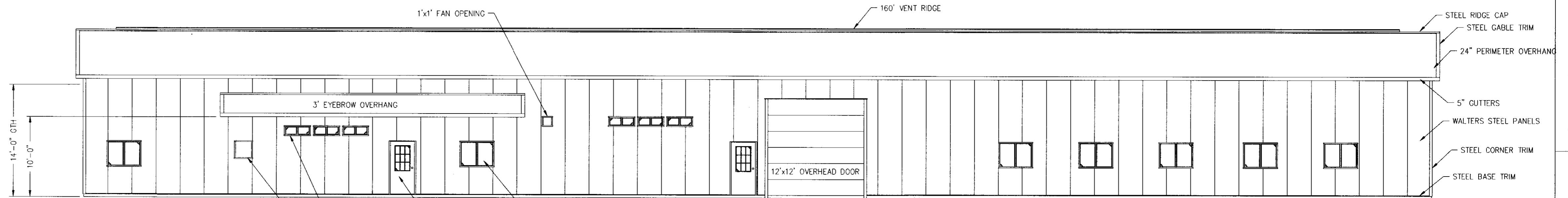
FRONT SIDE ELEVATION

SCALE: 1/8" = 1'-0"



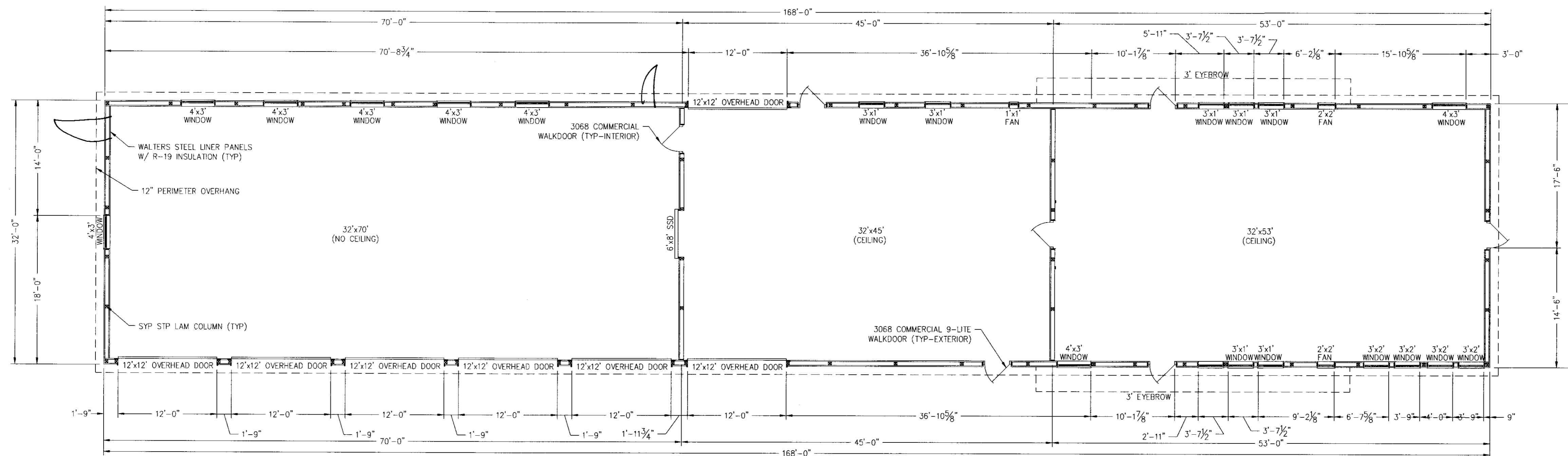
RIGHT END ELEVATION

SCALE: 1/8" = 1'-0"



BACK SIDE ELEVATION

SCALE: 1/8" = 1'-0"



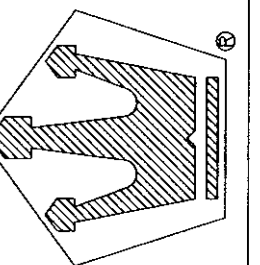
FLOOR PLAN

SCALE: 1/8" = 1'-0"

Owner: Shane Wilkerson
 Project:
 Location:
 Dealer/Salesman: Travis Gardner

Drawn By: KAM
 Date: 09/29/08
 Revised By: KAM
 Date Revised: 09/30/08

Walters Buildings
 Jack Walters & Sons Corp.
 P.O. Box 988, 6600 Midland Ct.
 Allenton, WI 53002
 1-800-558-7800
 www.waltersbuildings.com



Job No.: P41-487
 Checked By:
 Approved By:
 Sheet No.: