

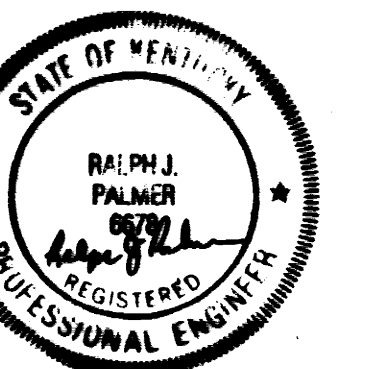
PARKING LOT
AT
UNIVERSITY OF KENTUCKY
EQUINE RESEARCH CENTER

UK Product #1575

ELECTRICAL ENGINEER:
STAGGS & FISHER
317 S. ASHLAND AVENUE
LEXINGTON, KENTUCKY

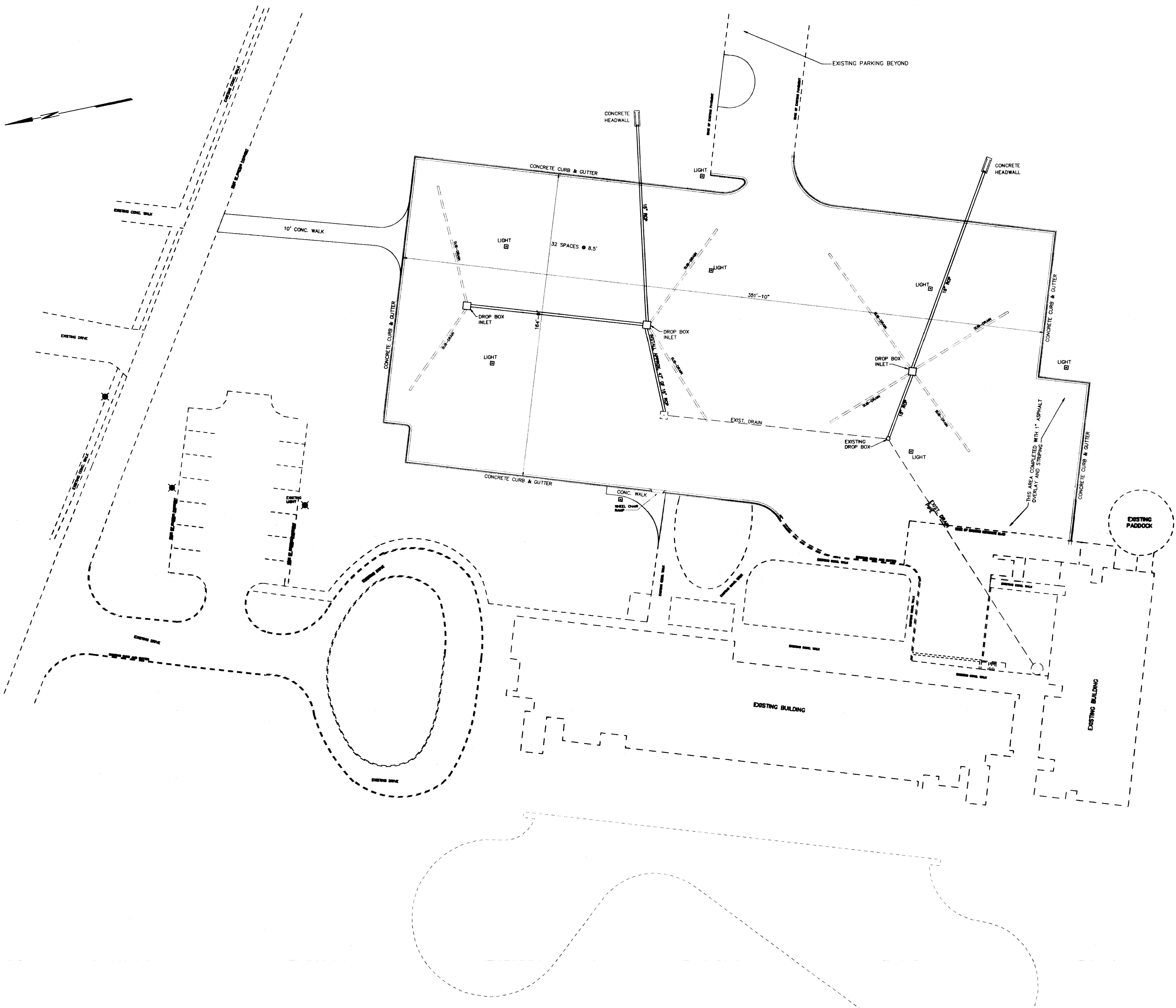
LANDSCAPE ARCHITECT:
H. POWELL & CO. INC.
509 MAXWELL ST. EAST
LEXINGTON, KENTUCKY

DESIGN ENGINEER:
PALMER ENGINEERING COMPANY
P.O. BOX 747
273 SHOPPERS DRIVE
WINCHESTER, KENTUCKY 40392-0747



SHEET No. 1 of 4

REVISED: 10-30-95



vk Project #1575



RECORD DRAWING

SHEET No. 2 of 4

DATE	BY	REVISIONS
10-30-95	W.L.T.	SHIFTED ENTIRE PARKING LOT APPROXIMATELY 20' TO THE EAST, RECONFIGURED GRADING, DRAINAGE AND PARKING
1-28-96	W.L.T.	CHANGED SIZE, GRADING, PIPING AND STRIPING LAYOUT
3-21-96	W.L.T.	REDUCED PARKING LOT BY 17' AT NORTH END & 82' AT SOUTH END, REMARKED STRIPING

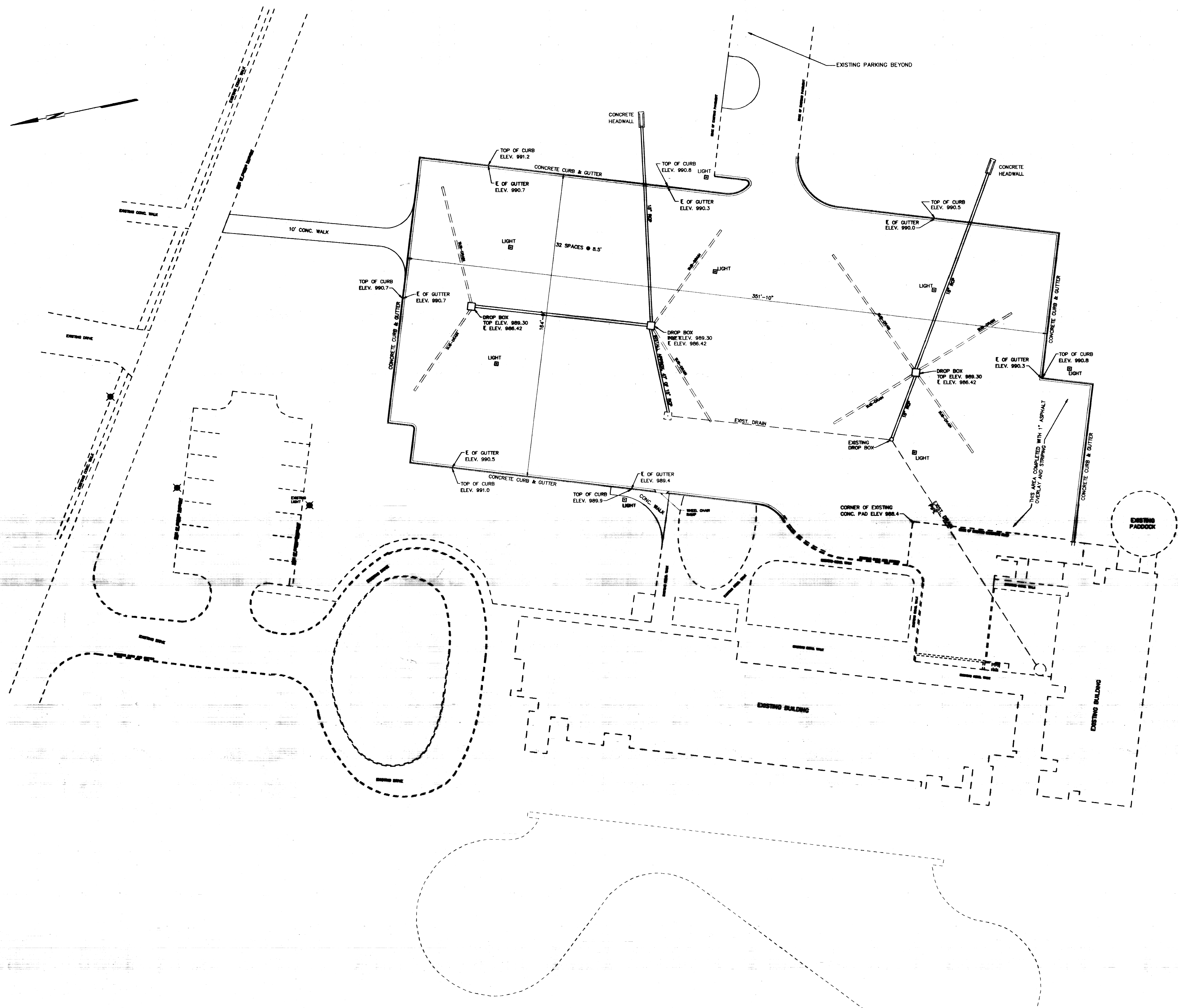
CHECKED:
R.J.P.
APPROVED:

Palmer
PALMER ENGINEERING
 278 SHOPPERS DRIVE
 WINCHESTER, KY. 40391

SCALE:
1"=20'
DATE:
09-18-95

UNIVERSITY OF KENTUCKY
 EQUINE RESEARCH CENTER PARKING LOT

PLAN VIEW



UK Project No. 1575

RECORD DRAWING

SHEET No. 2 of 4

DATE	BY	REVISIONS
10-20-95	R.J.P.	SHIFTED ENTIRE PARKING LOT APPROXIMATELY 20' TO THE EAST, RECONFIGURED GRADING, DRAINAGE AND PARKING
1-28-96	R.J.P.	CHANGED SIZE, GRADING, PAVING AND STRIPING LAYOUT
3-21-98	R.J.P.	RESIZED PARKING LOT BY 17' AT NORTH END & 20' AT SOUTH END, RENOVATED STRIPING

CHECKED:
R.J.P.
APPROVED:

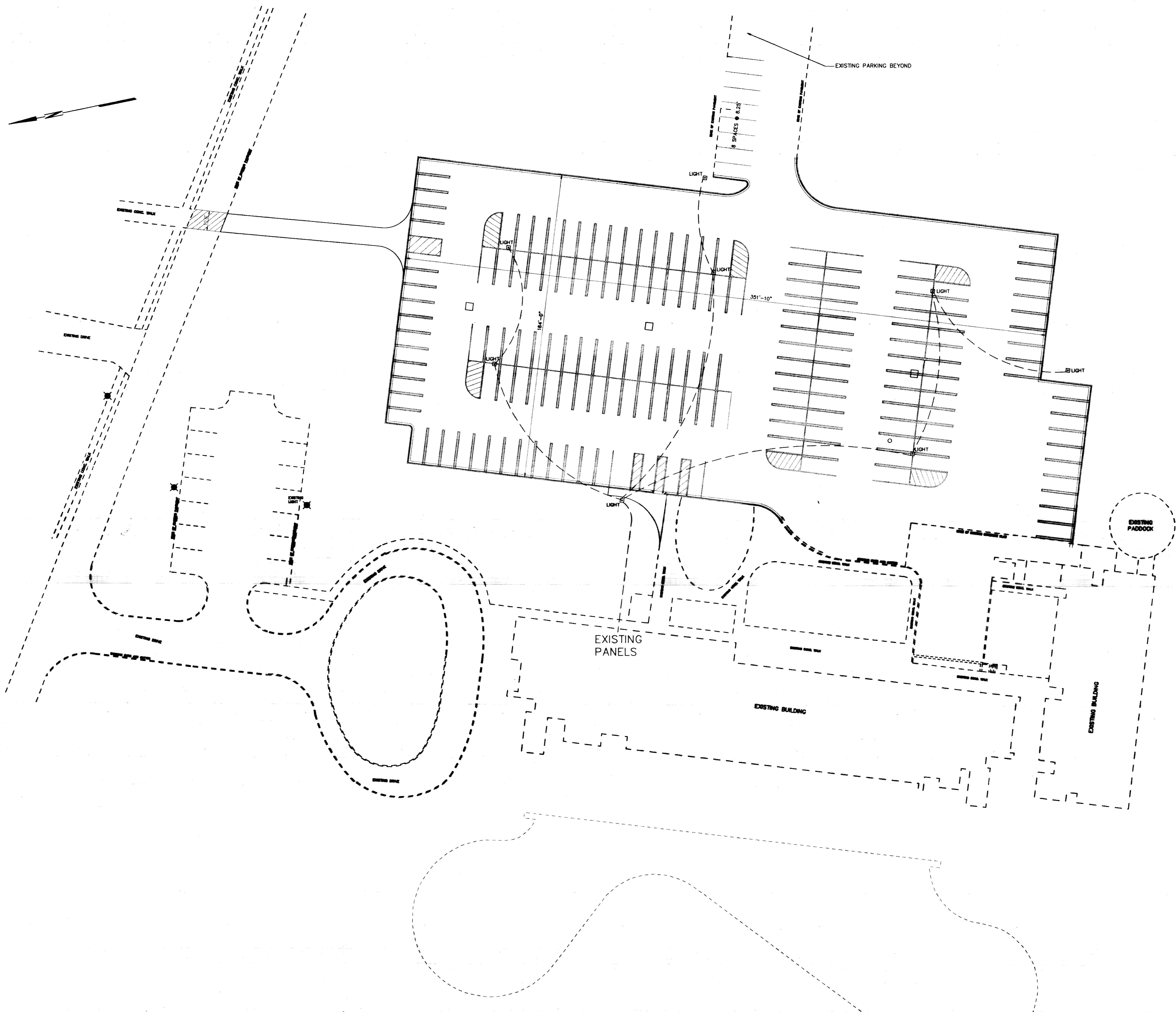
Palmer
ENGINEERS & ARCHITECTS

PALMER ENGINEERING
273 SHOPPERS DRIVE
WINCHESTER, KY. 40391

SCALE:
1"=20'
DATE:
09-18-95

UNIVERSITY OF KENTUCKY
EQUINE RESEARCH CENTER PARKING LOT

PLAN VIEW



UK Project No. 1575



RECORD DRAWING

SHEET No. 4 of 4

REVISIONS	
10-30-95	W.L.T. SHIFTED ENTIRE PARKING LOT APPROXIMATELY 20' TO THE EAST, RECONFIGURED GRADING, DRAINAGE AND PARKING
1-29-96	W.L.T. CHANGED SIZE, GRADING, PIPING AND STRIPING LAYOUT
3-21-96	W.L.T. REDUCED PARKING LOT BY 17' AT NORTH END & 60' AT SOUTH END, REWORKED STRIPING

CHECKED:
R.J.P.
APPROVED:

Palmer
PALMER ENGINEERING
223 SHOPPERS DRIVE
WINCHESTER, KY. 40391

SCALE: 1"=20'
DATE: 09-18-95

UNIVERSITY OF KENTUCKY
EQUINE RESEARCH CENTER PARKING LOT

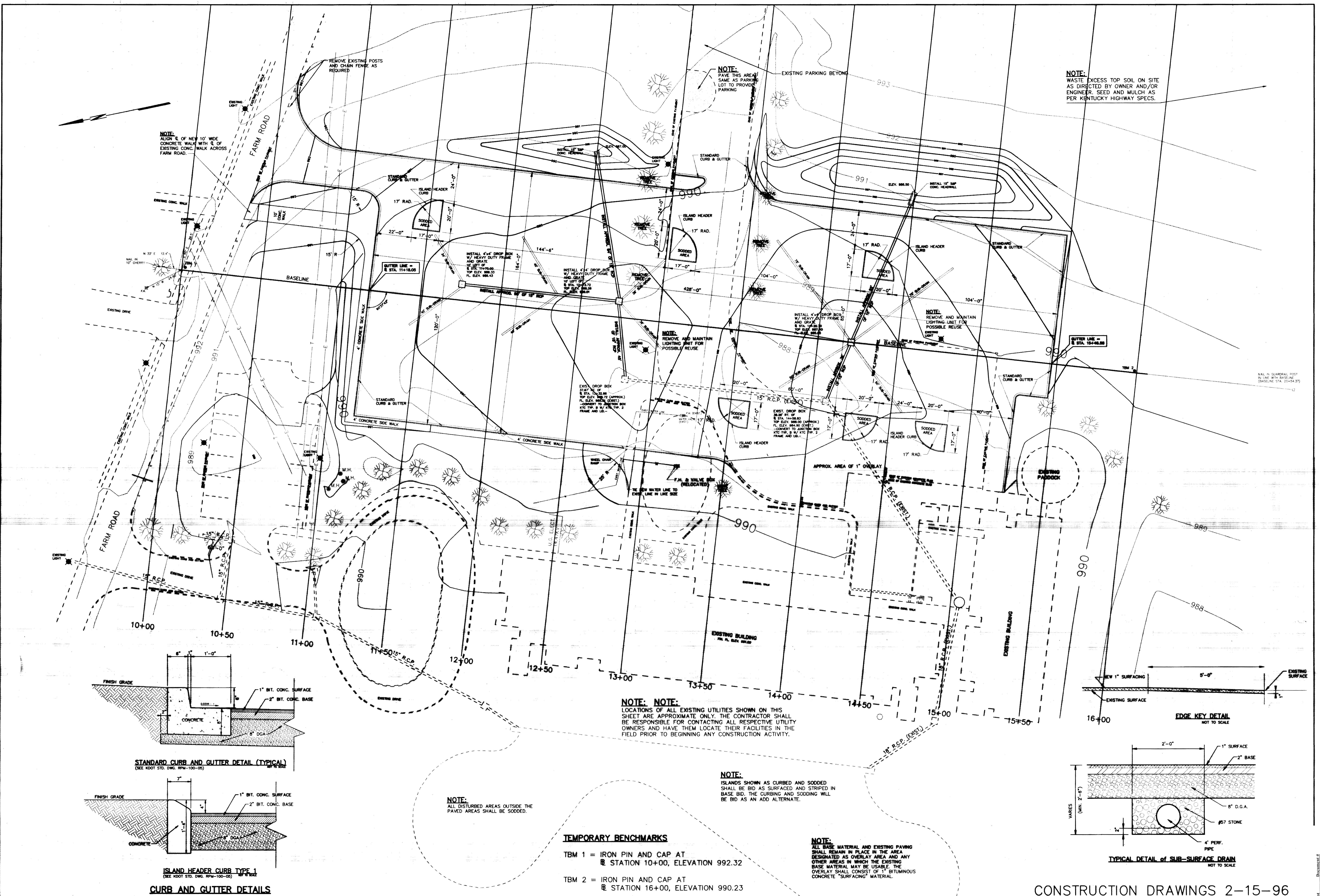
ELECTRICAL AND LIGHTING PLAN

PARKING LOT
AT
UNIVERSITY OF KENTUCKY
EQUINE RESEARCH CENTER

ELECTRICAL ENGINEER:
STAGGS & FISHER
317 S. ASHLAND AVENUE
LEXINGTON, KENTUCKY

LANDSCAPE ARCHITECT:
H. POWELL & CO. INC.
509 MAXWELL ST. EAST
LEXINGTON, KENTUCKY

DESIGN ENGINEER:
PALMER ENGINEERING COMPANY
P.O. BOX 747
273 SHOPPERS DRIVE
WINCHESTER, KENTUCKY 40392-0747



NOTE:
ALIGN E. OF NEW 10' WIDE CONCRETE WALK WITH E. OF EXISTING CONC. WALK ACROSS FARM ROAD.

NOTE:
PAVE THIS AREA SAME AS PARKING LOT TO PROVIDE PARKING

NOTE:
WASTE EXCESS TOP SOIL ON SITE AS DIRECTED BY OWNER AND/OR ENGINEER. SEED AND MULCH AS PER KENTUCKY HIGHWAY SPECS.

NOTE:
REMOVE AND MAINTAIN LIGHTING UNIT FOR POSSIBLE REUSE

NOTE:
LOCATIONS OF ALL EXISTING UTILITIES SHOWN ON THIS SHEET ARE APPROXIMATE ONLY. THE CONTRACTOR SHALL BE RESPONSIBLE FOR CONTACTING ALL RESPECTIVE UTILITY OWNERS AND HAVE THEM LOCATE THEIR FACILITIES IN THE FIELD PRIOR TO BEGINNING ANY CONSTRUCTION ACTIVITY.

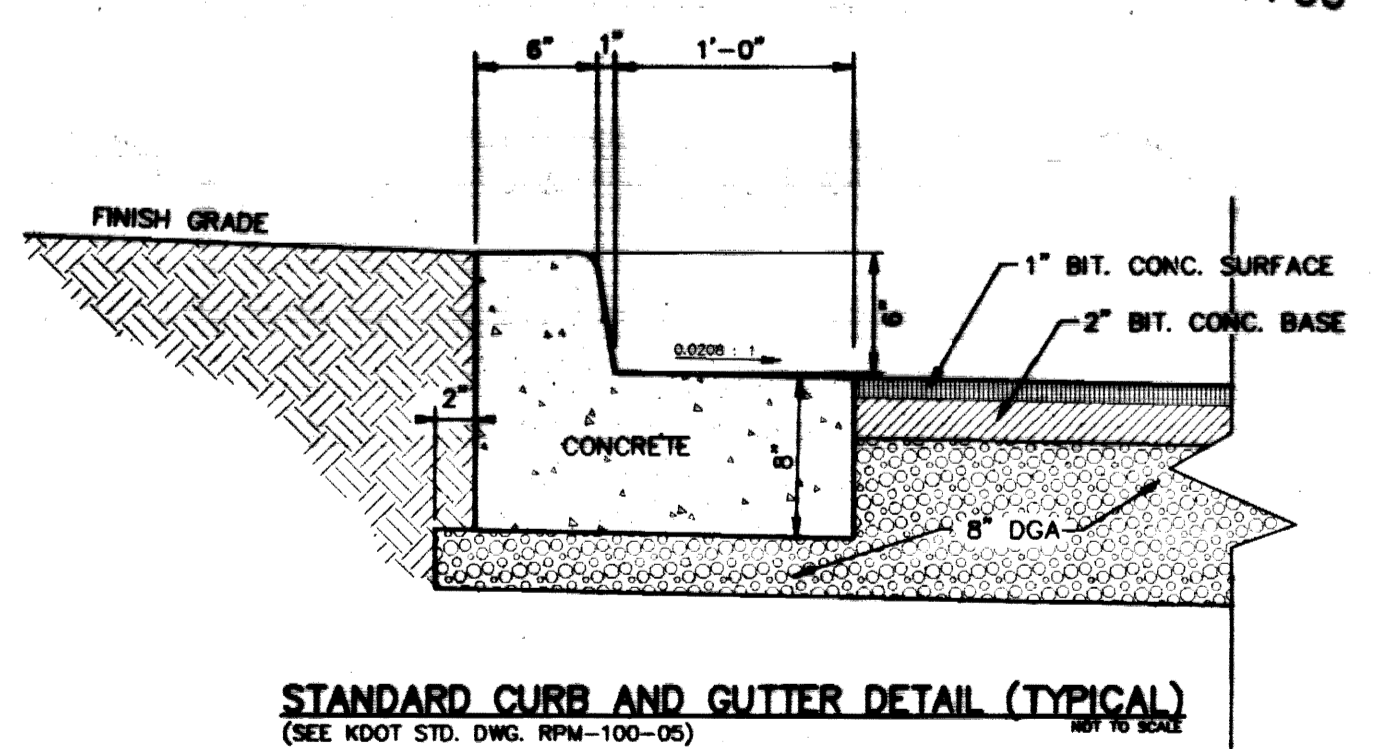
NOTE:
ISLANDS SHOWN AS CURBED AND SODDED SHALL BE BID AS SURFACED AND STRIPED IN BASE BID. THE CURBING AND SODDING WILL BE BID AS AN ADD ALTERNATE.

NOTE:
ALL BASE MATERIAL AND EXISTING PAVING SHALL REMAIN IN PLACE IN THE AREA DESIGNATED AS OVERLAY AREA AND ANY OTHER AREAS IN WHICH THE EXISTING BASE MATERIAL MAY BE USABLE. THE OVERLAY SHALL CONSIST OF 1" BITUMINOUS CONCRETE "SURFACING" MATERIAL.

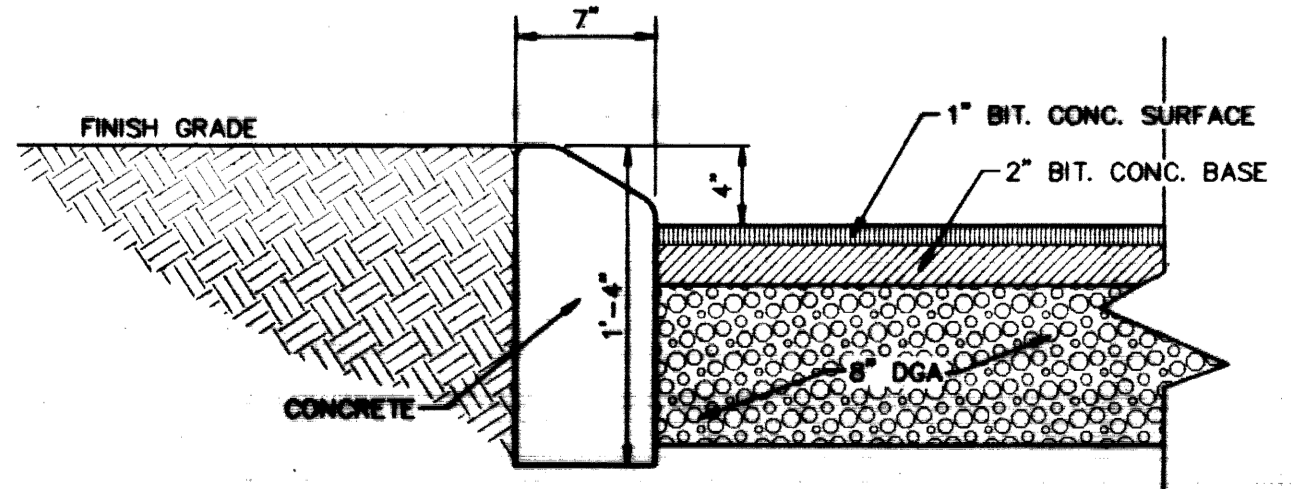
NOTE:
ALL DISTURBED AREAS OUTSIDE THE PAVED AREAS SHALL BE SODDED.

TEMPORARY BENCHMARKS

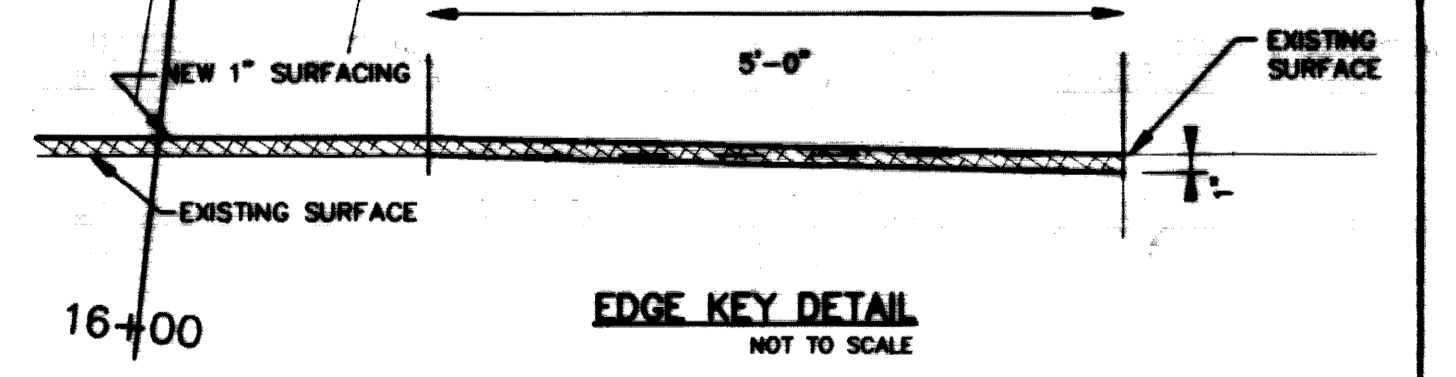
- TBM 1 = IRON PIN AND CAP AT STATION 10+00, ELEVATION 992.32
- TBM 2 = IRON PIN AND CAP AT STATION 16+00, ELEVATION 990.23



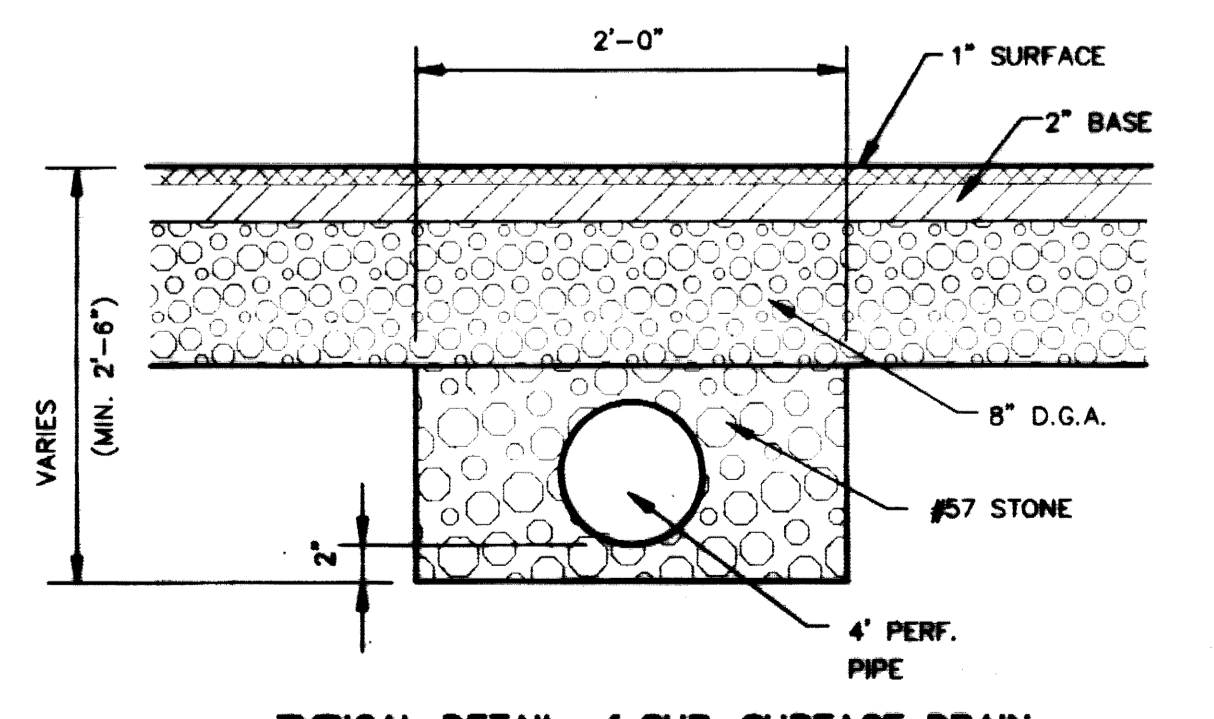
STANDARD CURB AND GUTTER DETAIL (TYPICAL)
(SEE KDOT STD. DWG. RPA-100-05)



ISLAND HEADER CURB TYPE 1
(SEE KDOT STD. DWG. RPA-100-05)



EDGE KEY DETAIL
NOT TO SCALE



TYPICAL DETAIL of SUB-SURFACE DRAIN
NOT TO SCALE

CONSTRUCTION DRAWINGS 2-15-96

DATE	BY	REVISIONS	CHECKED:
10-30-95	M.L.T.	SHIFTED ENTIRE PARKING LOT APPROXIMATELY 20' TO THE EAST, RECONFIGURED GRADING, DRAINAGE AND PAVING	R.J.P.
1-28-96	M.L.T.	CHANGED SIZE, GRADING, PAVING AND STRIPING LAYOUT	APPROVED:

Palmer ENGINEERING
278 SHOPPERS DRIVE
WINCHESTER, KY. 40391

SCALE: 1"=20'
DATE: 09-18-95

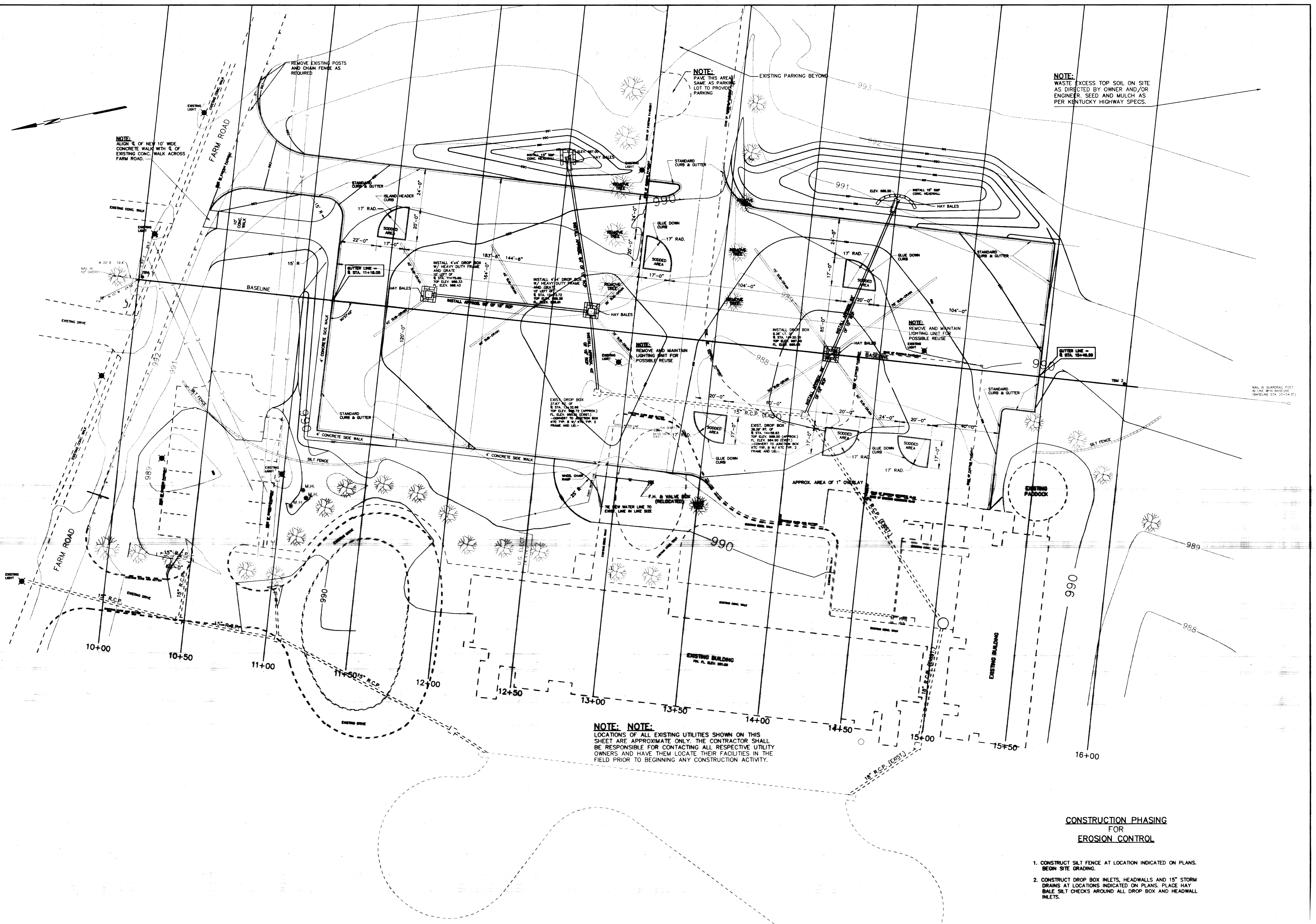
UNIVERSITY OF KENTUCKY
EQUINE RESEARCH CENTER PARKING LOT

PLAN VIEW

NOTE:
ALIGN E. OF NEW 10' WIDE CONCRETE WALK WITH E. OF EXISTING CONC. WALK ACROSS FARM ROAD.

NOTE:
PAVE THIS AREA SAME AS PARKING LOT TO PROVIDE PARKING

NOTE:
WASTE EXCESS TOP SOIL ON SITE AS DIRECTED BY OWNER AND/OR ENGINEER. SEED AND MULCH AS PER KENTUCKY HIGHWAY SPECS.



NOTE: NOTE:
LOCATIONS OF ALL EXISTING UTILITIES SHOWN ON THIS SHEET ARE APPROXIMATE ONLY. THE CONTRACTOR SHALL BE RESPONSIBLE FOR CONTACTING ALL RESPECTIVE UTILITY OWNERS AND HAVE THEM LOCATE THEIR FACILITIES IN THE FIELD PRIOR TO BEGINNING ANY CONSTRUCTION ACTIVITY.

CONSTRUCTION PHASING FOR EROSION CONTROL

1. CONSTRUCT SILT FENCE AT LOCATION INDICATED ON PLANS. BEGIN SITE GRADING.
2. CONSTRUCT DROP BOX INLETS, HEADWALLS AND 15" STORM DRAINS AT LOCATIONS INDICATED ON PLANS. PLACE HAY BALE SILT CHECKS AROUND ALL DROP BOX AND HEADWALL INLETS.

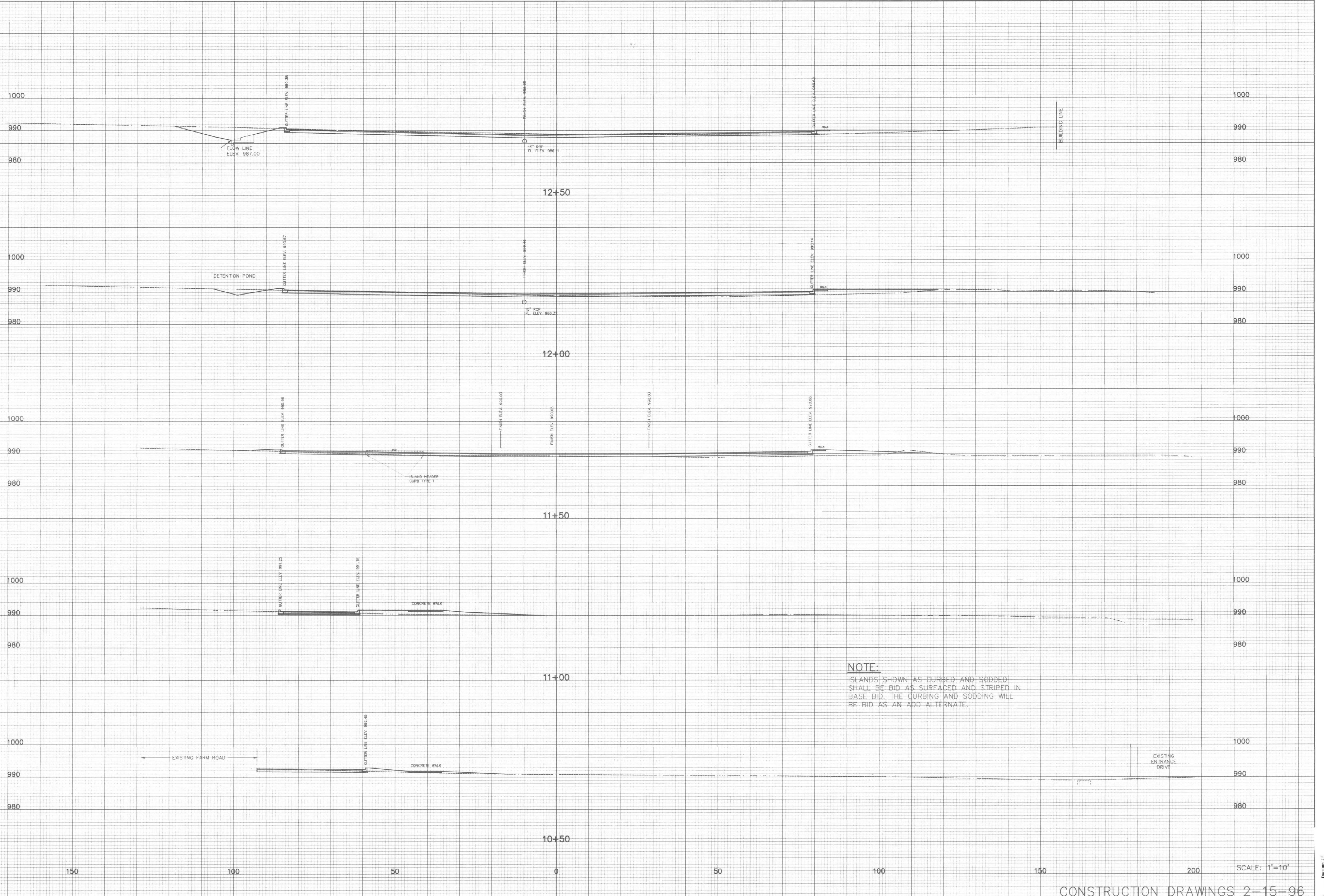
DATE	BY	REVISIONS	CHECKED:
10-30-90	R.J.P.	SHIFTED ENTIRE PARKING LOT APPROXIMATELY 20' TO THE EAST, RECONFIGURED GRADING, DRAINAGE AND PARKING	R.J.P.
1-29-91	R.J.P.	CHANGED SIZE, GRADING, PAVING AND STRIPING LAYOUT	R.J.P.

Palmer ENGINEERING
278 SHIFFERS DRIVE
WINCHESTER, KY. 40391

SCALE: 1"=20'
DATE: 09-18-95

**UNIVERSITY OF KENTUCKY
EQUINE RESEARCH CENTER PARKING LOT**

EROSION CONTROL PLAN



NOTE:
 ISLANDS SHOWN AS CURBED AND SODDED SHALL BE BID AS SURFACED AND STRIPED IN BASE BID. THE CURBING AND SODDING WILL BE BID AS AN ADD ALTERNATE.

CONSTRUCTION DRAWINGS 2-15-96

SCALE: 1"=10'

DATE	BY	REVISIONS
10-15-95	W.L.T.	SHIFTED ENTIRE PARKING LOT APPROXIMATELY 20' TO THE EAST, RECONFIGURED GRADING, DRAINAGE AND PARKING
11-29-96	W.L.T.	CHANGED SIZE, GRADING, PIPING AND STRIPING LAYOUT

CHECKED:
R.J.P.
APPROVED:



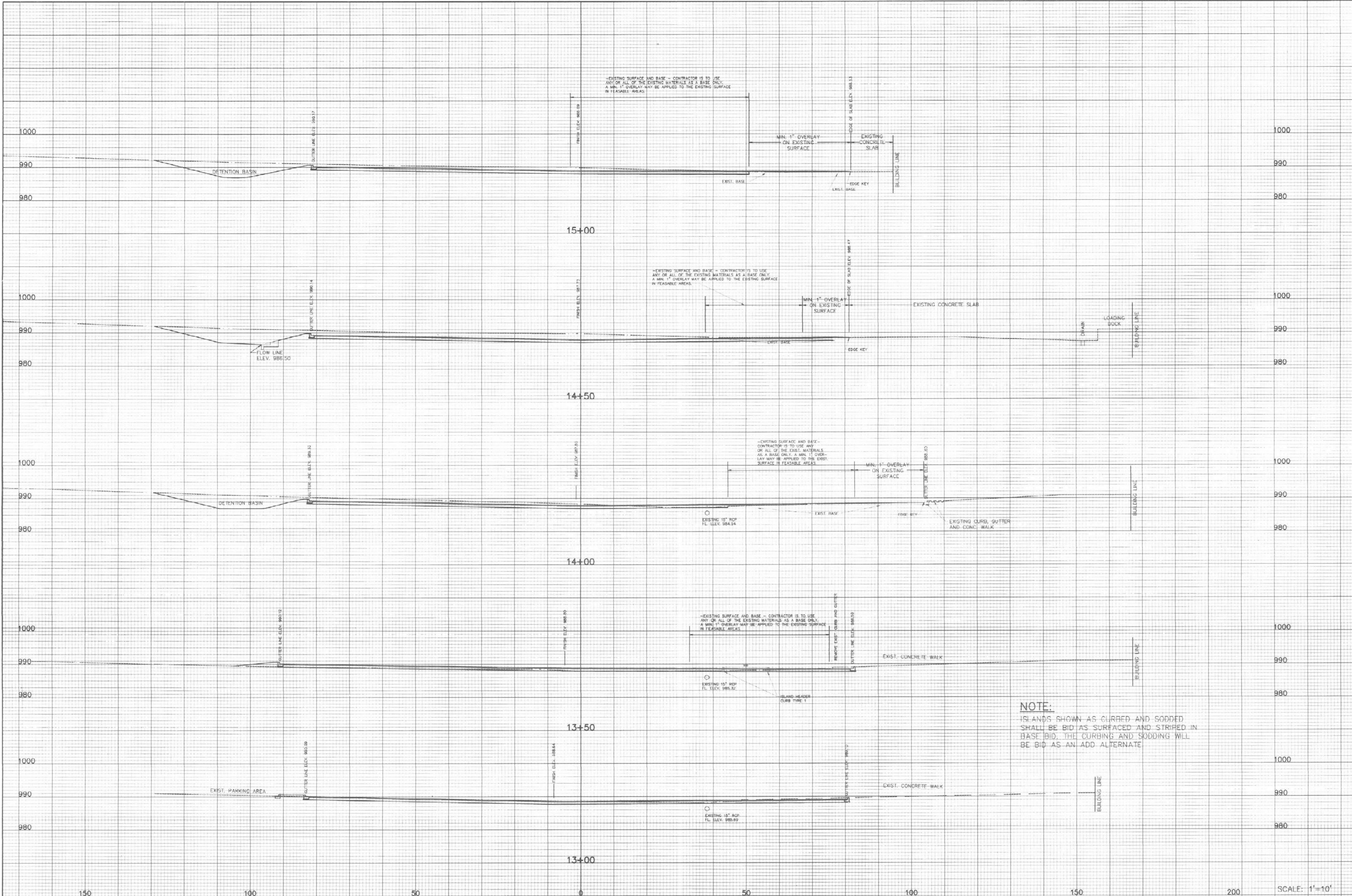
PALMER ENGINEERING
 273 SHOPPERS DRIVE
 WINCHESTER, KY. 40391

SCALE:
1"=10'
DATE:
09-18-95

UNIVERSITY OF KENTUCKY
 EQUINE RESEARCH CENTER PARKING LOT

CROSS SECTIONS

SHEET NO. 4 of 9



NOTE:
 ISLANDS SHOWN AS CURBED AND SODDED
 SHALL BE BID AS SURFACED AND STRIPED IN
 BASE BID. THE CURBING AND SODDING WILL
 BE BID AS AN ADD ALTERNATE

SCALE: 1"=10'

CONSTRUCTION DRAWINGS 2-15-96

DATE	BY	REVISIONS
10-30-95	W.L.T.	SHIFTED ENTIRE PARKING LOT APPROXIMATELY 20' TO THE EAST, RECONFIGURED GRADING, DRAINAGE AND PARKING
1-29-96	W.L.T.	CHANGED SITE, GRADING, PIPING AND STRIPING LAYOUT

CHECKED:
 R.J.P.
 APPROVED:

Palmer ENGINEERING
 PALMER ENGINEERING
 273 SHOPPERS DRIVE
 WINCHESTER, KY. 40391

SCALE:
 1"=10'
 DATE:
 09-18-95

UNIVERSITY OF KENTUCKY
 EQUINE RESEARCH CENTER PARKING LOT

CROSS SECTIONS

H:\JOBS\UK\1-96-5
 2-1-96



SCALE: 1"=10'

CONSTRUCTION DRAWINGS 2-15-96

DATE	BY	REVISIONS
10-30-95	W.L.	SHIFTED ENTIRE PARKING LOT APPROXIMATELY 20' TO THE EAST, RECONFIGURED GRADING, DRAINAGE AND PARKING
1-29-96	W.L.	CHANGED SIZE, GRADING, PAVING AND STRIPING LAYOUT

CHECKED:
R.J.P.
APPROVED:

Palmer
ENGINEERING

PALMER ENGINEERING
278 SHOPPERS DRIVE
WINCHESTER, KY. 40391

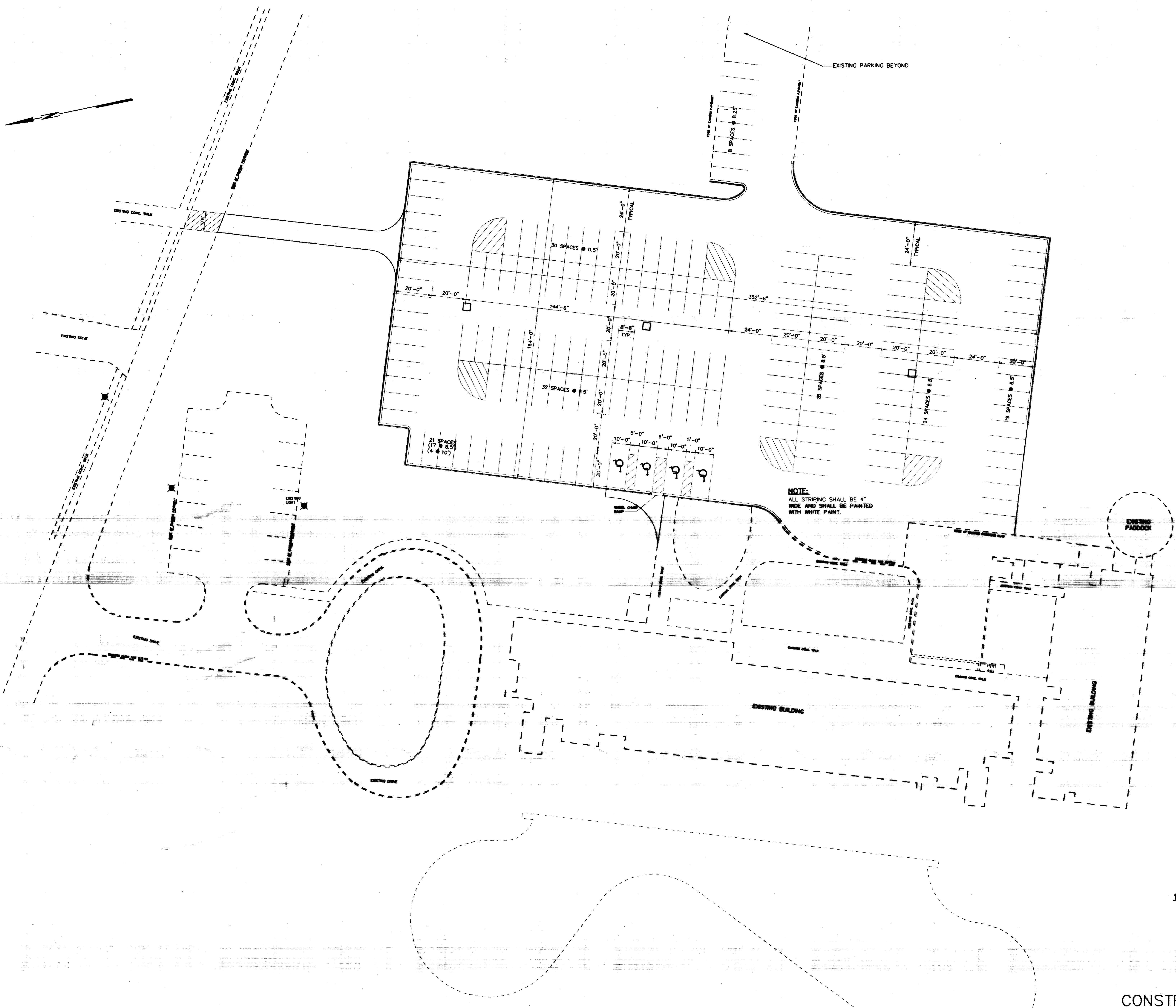
SCALE:
1"=10'
DATE:
09-18-95

UNIVERSITY OF KENTUCKY
EQUINE RESEARCH CENTER PARKING LOT

CROSS SECTIONS

SHEET No. **6** of 9

H:\JORS\UK\1-96 6
2-1-96



NOTE:
ALL STRIPING SHALL BE 4" WIDE AND SHALL BE PAINTED WITH WHITE PAINT.

NOTE:
ISLANDS SHOWN AS CURBED AND SODDED SHALL BE BID AS SURFACED AND STRIPED IN BASE BID. THE CURBING AND SODDING WILL BE BID AS AN ADD ALTERNATE.

172 SPACES

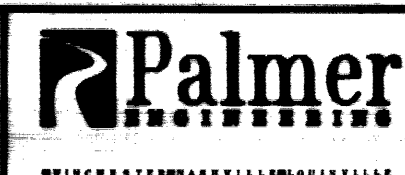
CONSTRUCTION DRAWINGS 3-21-96

STRIPING PLAN

SHEET No. 7 of 9

DATE	BY	REVISIONS
10-20-95	W.L.	SHIFTED ENTIRE PARKING LOT APPROXIMATELY 5' TO THE EAST, RECONFIGURED GRADING, DRAINAGE AND PARKING
1-29-96	W.L.	CHANGED SIZE, GRADING, PAVING AND STRIPING LAYOUT
3-21-96	W.L.	REDUCED PARKING LOT BY 17' AT NORTH END & 5' AT SOUTH END, RENOVATED STRIPING

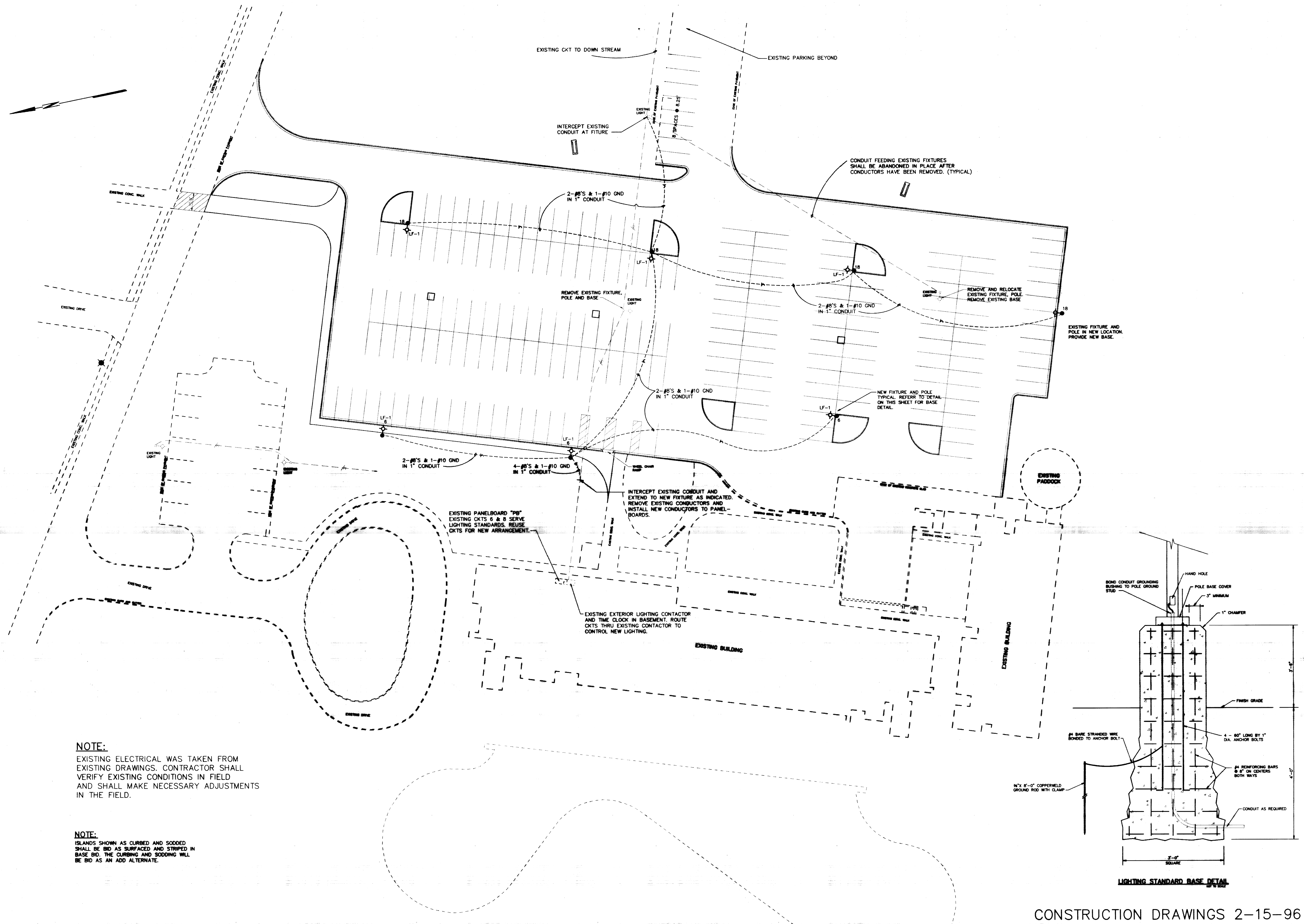
CHECKED:
R.J.P.
APPROVED:



PALMER ENGINEERING
273 SHOPPER DRIVE
WINCHESTER, KY. 40391

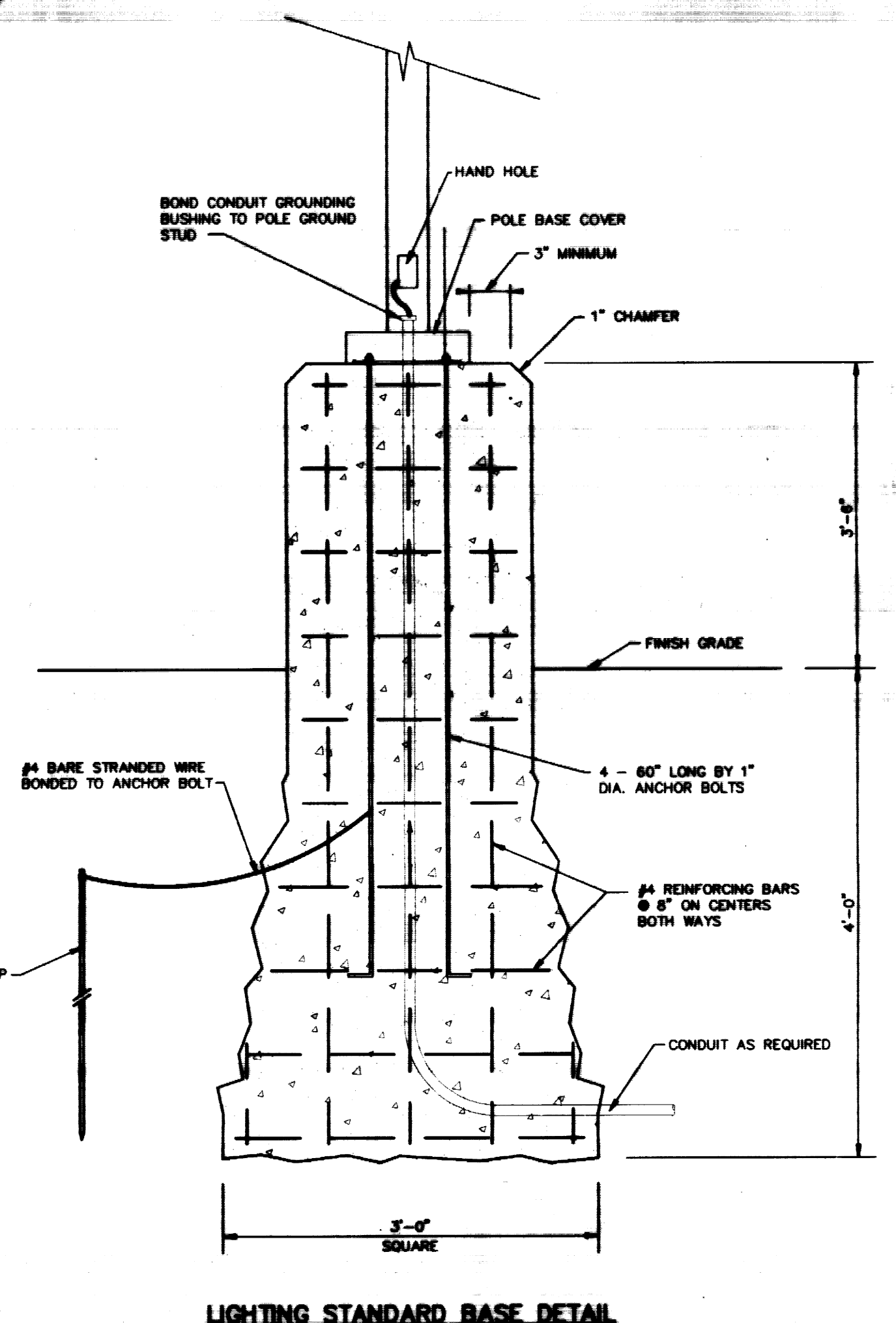
SCALE:
1"=20'
DATE:
09-18-95

UNIVERSITY OF KENTUCKY
EQUINE RESEARCH CENTER PARKING LOT

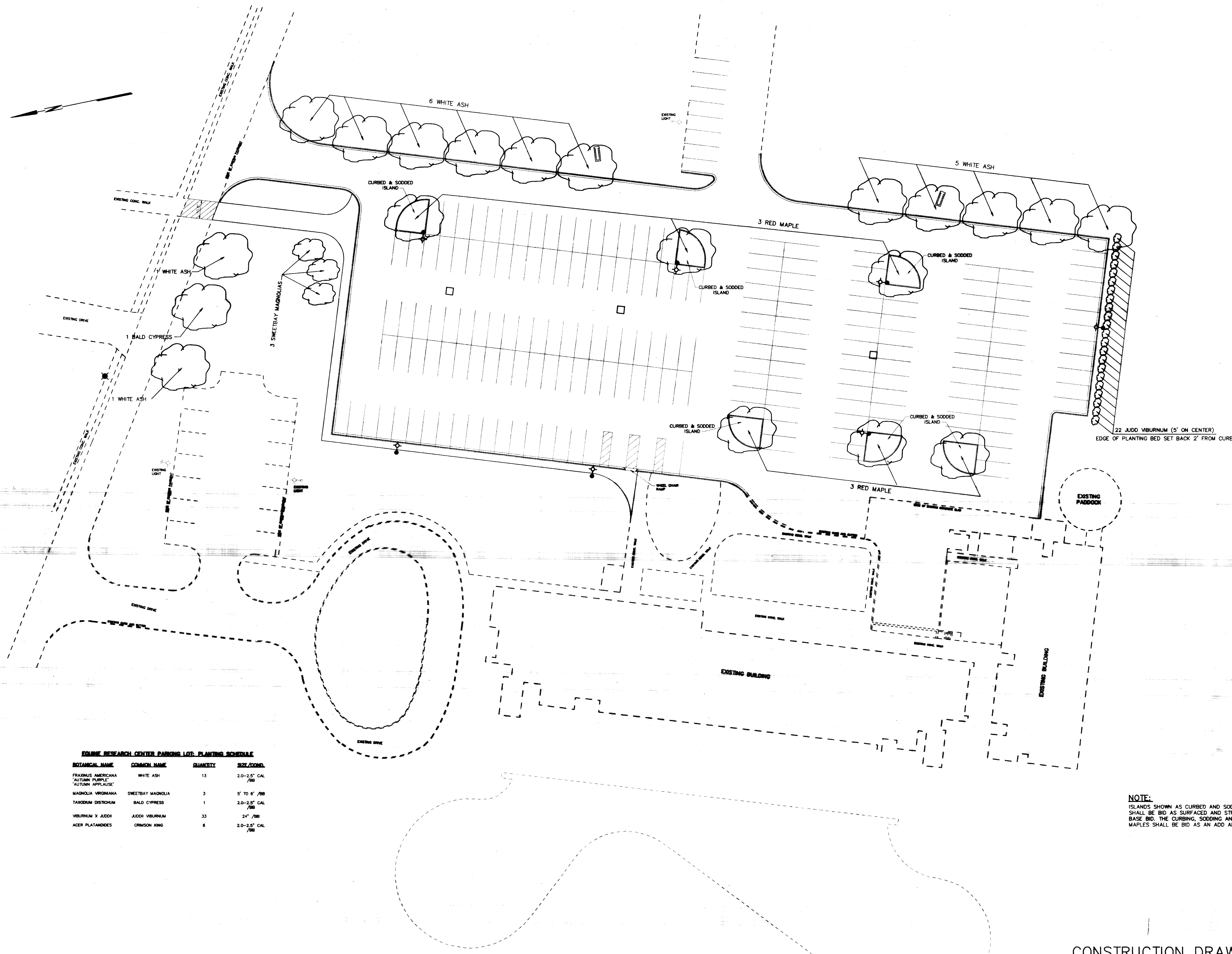


NOTE:
 EXISTING ELECTRICAL WAS TAKEN FROM EXISTING DRAWINGS. CONTRACTOR SHALL VERIFY EXISTING CONDITIONS IN FIELD AND SHALL MAKE NECESSARY ADJUSTMENTS IN THE FIELD.

NOTE:
 ISLANDS SHOWN AS CURBED AND SODDED SHALL BE BID AS SURFACED AND STRIPED IN BASE BID. THE CURBING AND SODDING WILL BE BID AS AN ADD ALTERNATE.



CONSTRUCTION DRAWINGS 2-15-96



EQUINE RESEARCH CENTER PARKING LOT PLANTING SCHEDULE

BOTANICAL NAME	COMMON NAME	QUANTITY	SIZE/COND.
FRAXINUS AMERICANA "AUTUMN PURPLE" "AUTUMN APRILSISE"	WHITE ASH	13	2.0-2.5" CAL /BB
MAGNOLIA VIRGINIANA	SWEETBAY MAGNOLIA	3	5' TO 6' /BB
TAXODIUM DISTICHUM	BALD CYPRESS	1	2.0-2.5" CAL /BB
VIBURNUM X JUDDII	JUDDII VIBURNUM	33	24" /BB
ACER PLATANOIDES	CRIMSON KING	6	2.0-2.5" CAL /BB

NOTE:
ISLANDS SHOWN AS CURBED AND SODDED SHALL BE BID AS SURFACED AND STRIPED IN BASE BID. THE CURBING, SODDING AND SIX RED MAPLES SHALL BE BID AS AN ADD ALTERNATE.

CONSTRUCTION DRAWINGS 2-15-96