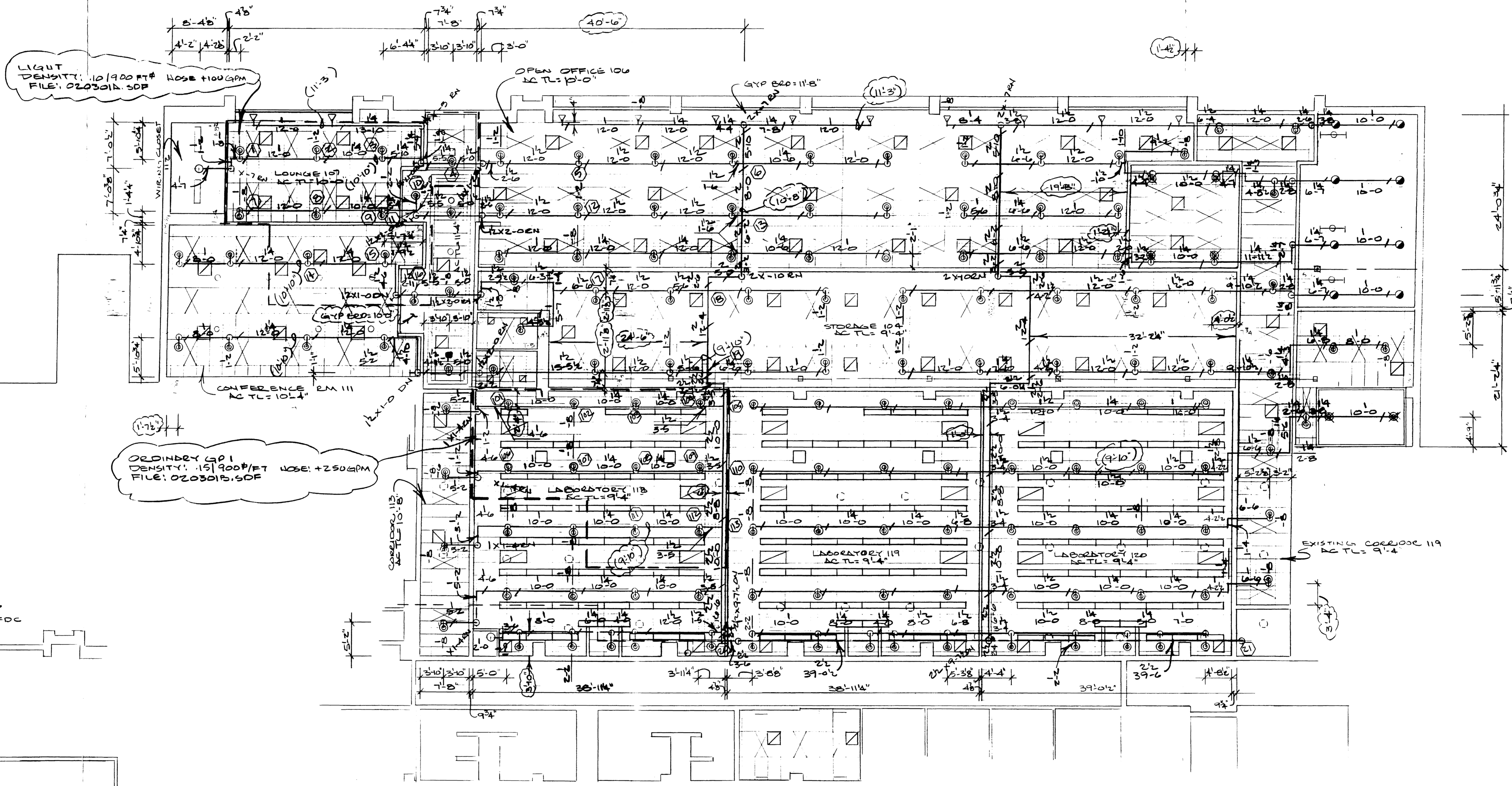


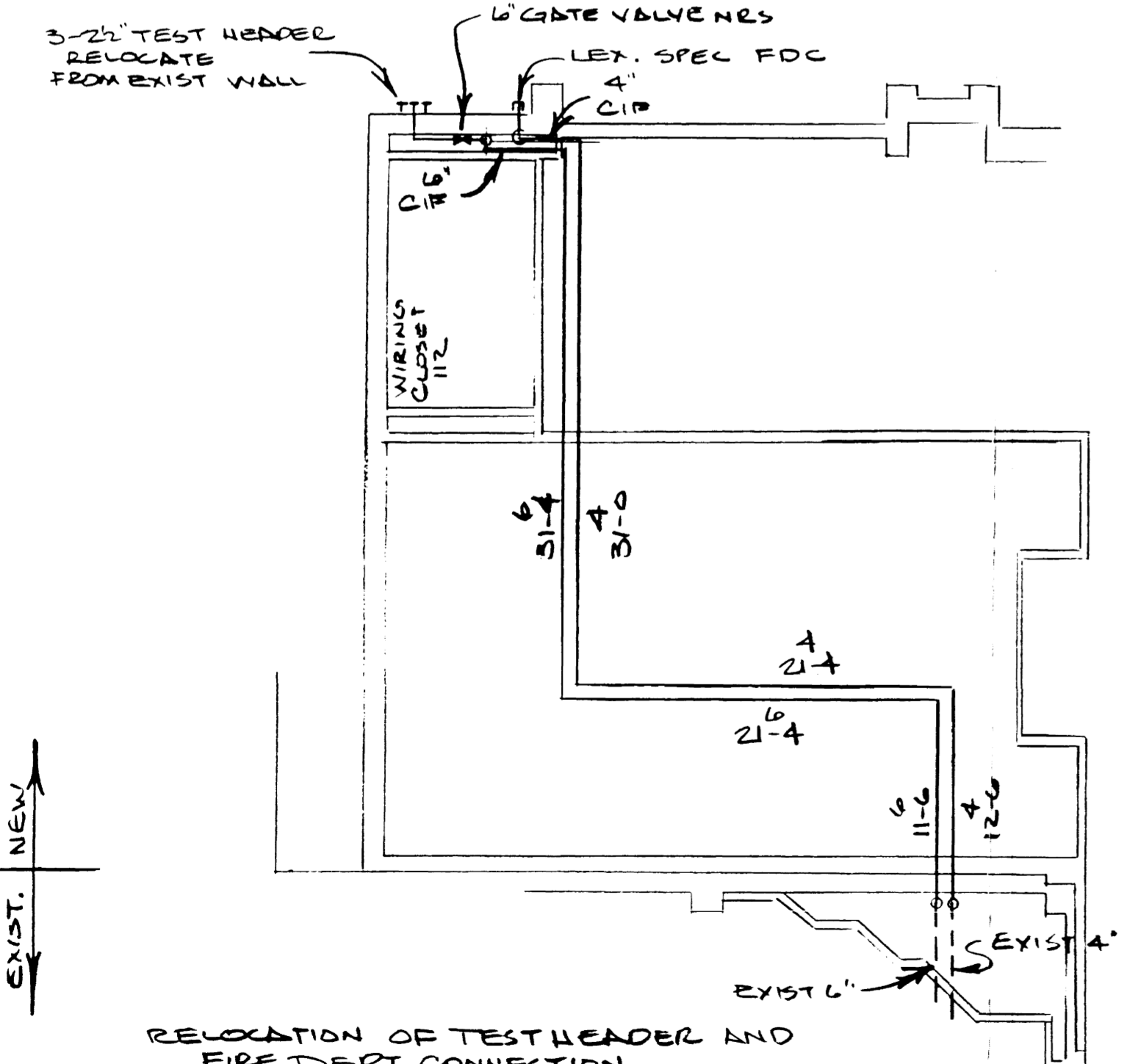
- 1/2" 155° RELIABLE MODEL FIRE QUICK RESPONSE BRASS UPRIGHT (2)
- 1/2" 200° RELIABLE MODEL FIRE QUICK RESPONSE BRASS UPRIGHT (5)
- ⊙ 1/2" 155° RELIABLE MODEL FIRE QUICK RESPONSE CUR RECESS PENDENT W/ CUR PLATE (147)
- ⊗ 1/2" 155° RELIABLE MODEL FIRE QUICK RESPONSE CUR HORIZONTAL SIDEWALL W/ PC CUR PLATE (11)
- ⊗ 1/2" 155° RELIABLE MODEL G3FR QUICK RESPONSE CUR DLY PENDENT W/ PC PLATE (6)



LIGHT DENSITY: 10/900 FT# FILE: 020301B.SOP  
NOSE +100 GPM

ORDINARY GP1 DENSITY: 15/900 FT# NOSE +250 GPM  
FILE: 020301B.SOP

TOTAL HEADS THIS SHEET (174)



	<b>GLUCK EQUINE CENTER RENOVATION</b> <b>UNIVERSITY OF KENTUCKY</b> LEXINGTON, KY	
	Revision:	Date: 8/02
	Drawing: 20F2	Scale: 1/2" = 1'-0" By: C.L.