

41 AB
94 X3

THE MAXWELL H. GLUCK EQUINE RESEARCH CENTER

PROJECT NUMBER 230.2

CONSTRUCTION DOCUMENTS

CONTROLLED TEMPERATURE COLD ROOMS, CONTROLLED ENVIRONMENTAL
WALK-IN INCUBATOR & STERILE TRANSFER ROOMS

COLLEGE OF AGRICULTURE

UNIVERSITY OF KENTUCKY, LEXINGTON CAMPUS

BICKEL-GIBSON ASSOCIATES ARCHITECTS, INC.
505 SOUTH THIRD STREET LOUISVILLE, KENTUCKY 40202

**PROCTOR-DAVIS-RAY
CONSULTING ENGINEERS, INC.**
800 CORPORATE DRIVE
LEXINGTON, KENTUCKY 40503
MECHANICAL AND ELECTRICAL ENGINEERS

**WHITE, WALKER & McREYNOLDS
CONSULTING ENGINEERS**
2041 REGENCY CIRCLE
LEXINGTON, KENTUCKY 40503
STRUCTURAL ENGINEERS

INDEX OF DRAWINGS

GENERAL

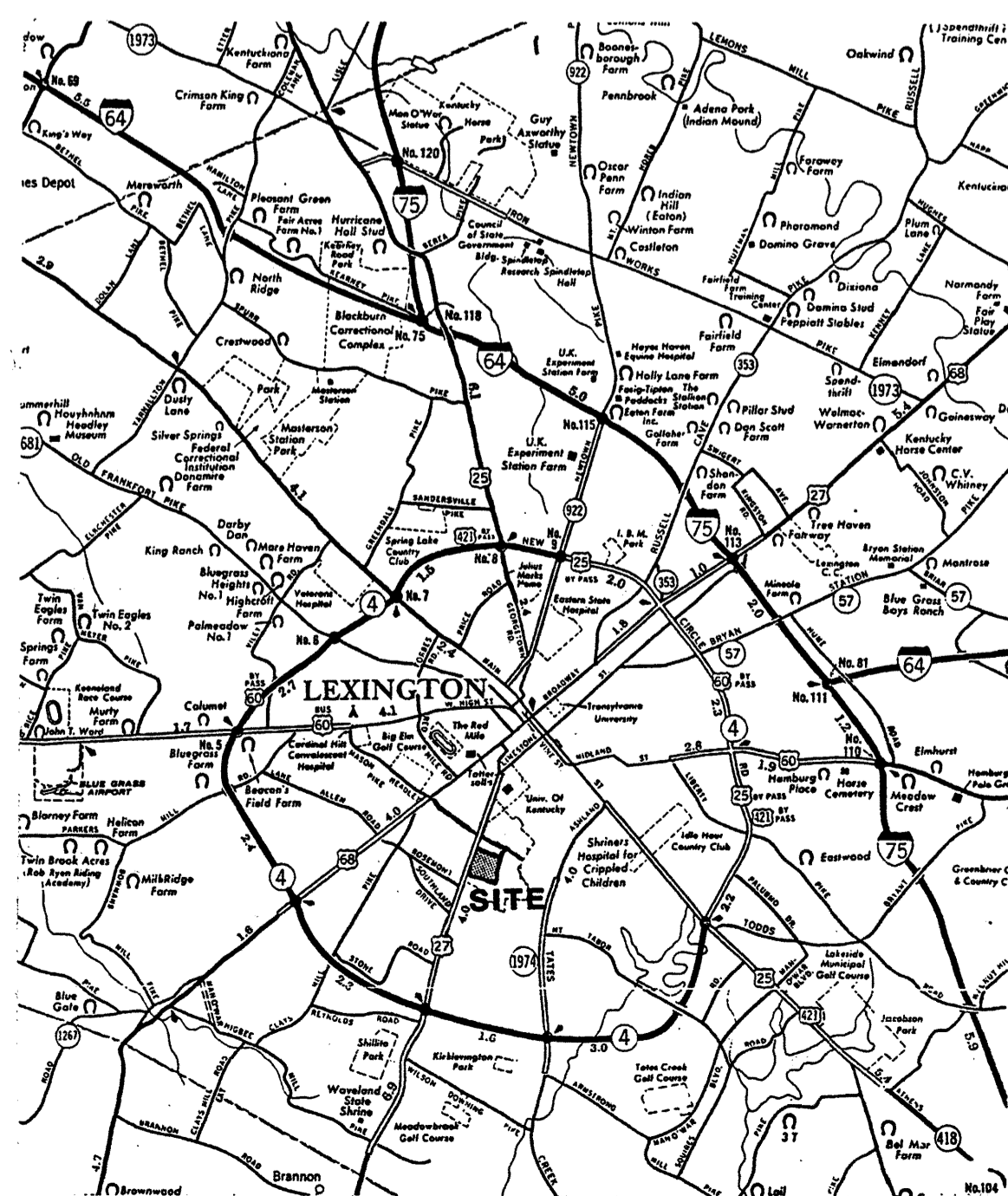
TITLE SHEET AND INDEX

REFERENCE DRAWINGS

- R1.1 FIRST LEVEL FLOOR PLAN - BUILDING A
- R1.2 SECOND LEVEL FLOOR PLAN - BUILDING A
- R1.3 THIRD LEVEL FLOOR PLAN - BUILDING A
- R1.4 FOURTH LEVEL FLOOR PLAN - BUILDING A

LABORATORY DRAWINGS

- EQ1.1 FIRST LEVEL LABORATORY PLANS - BUILDING A
- EQ1.2 THIRD LEVEL LABORATORY PLANS - BUILDING A
- EQ1.3 FOURTH LEVEL LABORATORY PLANS - BUILDING A



VICINITY MAP

BUILDING STATISTICS

KENTUCKY BUILDING CODE COMPLIANCE:

USAGE: GROUP B - RESEARCH BUILDING
CLASSIFICATION: 2B

GROSS SQ. FT.:

BUILDING A	53015 SQ. FT.
BUILDING B	6230 SQ. FT.
BUILDING C	120 SQ. FT.

ANTICIPATED OCCUPANTS:

BUILDING A	328
BUILDING B	1
BUILDING C	0

DATE: 4/11/86 SET NO:



UNIVERSITY PROJECT NUMBER
230.2

APPROVED: [Signature]
 DIRECTOR OF DESIGN AND CONSTRUCTION
 UNIVERSITY OF KENTUCKY
 DATE: 10/2/05

THE MAXWELL H. GLUCK EQUINE RESEARCH CENTER
 COLLEGE OF AGRICULTURE
 UNIVERSITY OF KENTUCKY, LEXINGTON CAMPUS

PROJECT NUMBER
8412.01

ISSUE OR SHEET

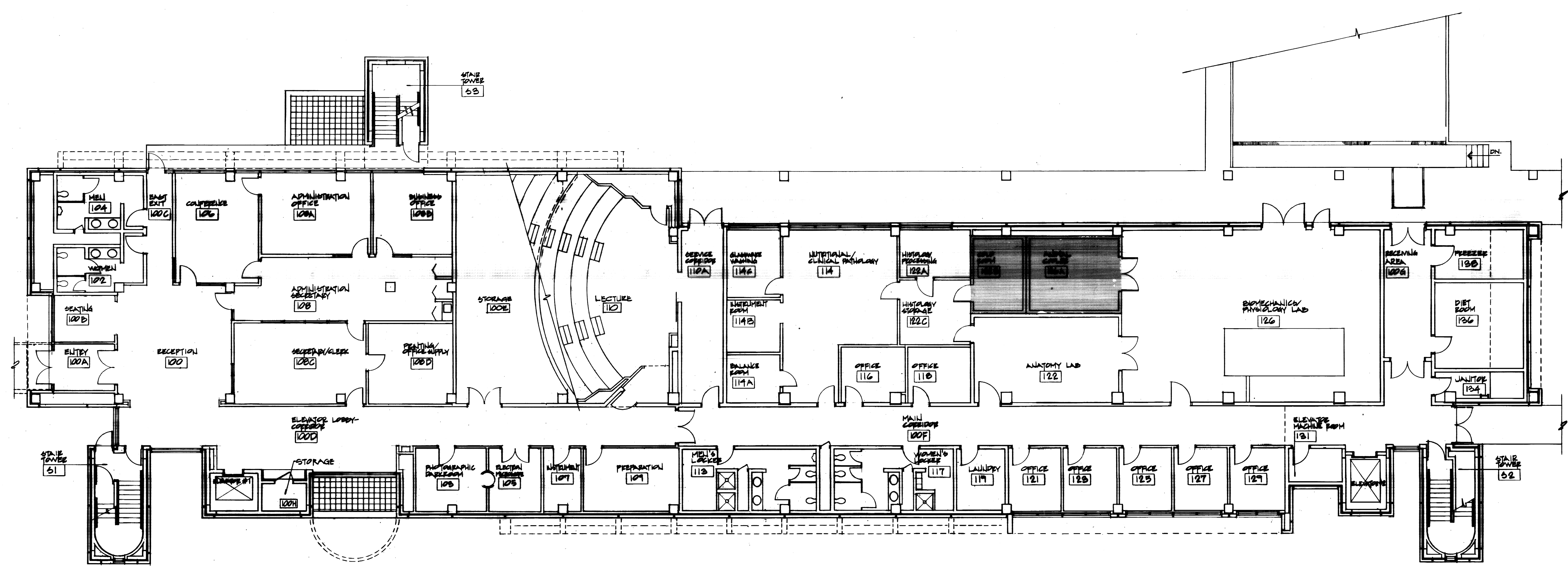
DRAWN BY

CHECKED BY
 LHA

DATE
 9/20/05

REVISIONS
 1-11-06

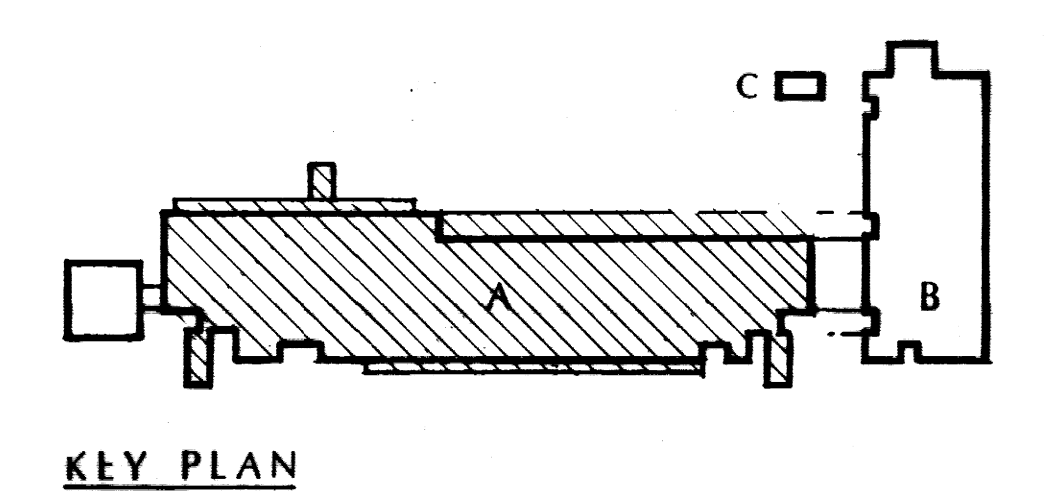
SHEET NUMBER
R1.1



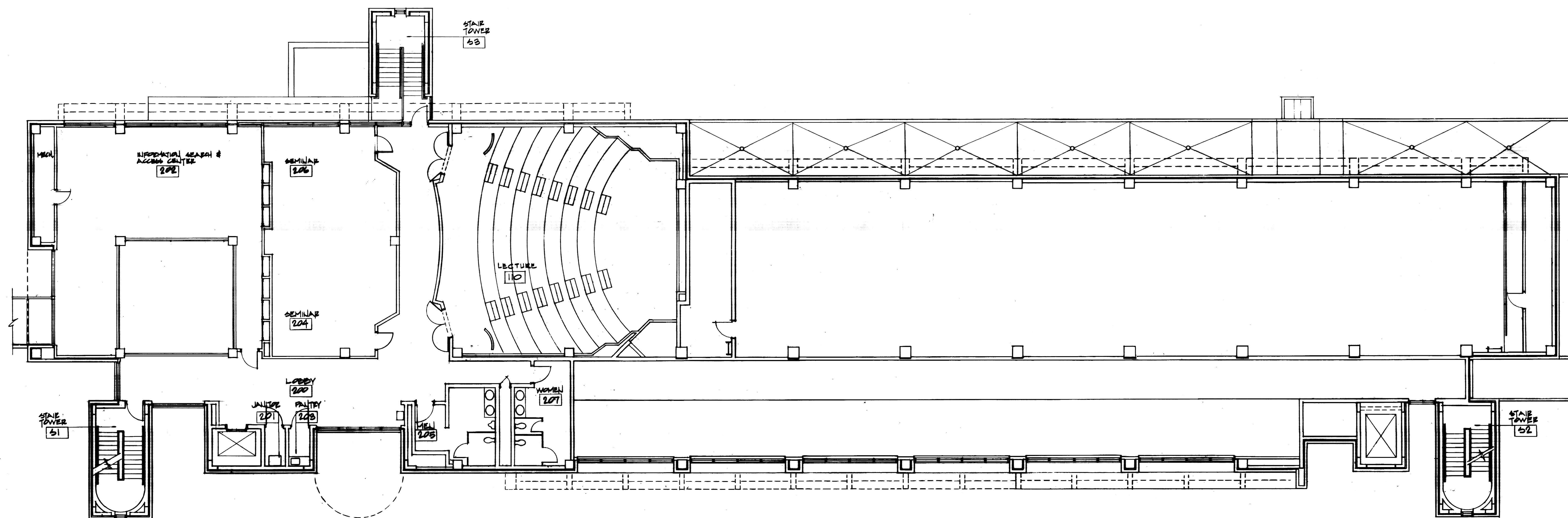
KEY:

- - CONTROLLED TEMPERATURE COLD ROOMS
- ▨ - CONTROLLED ENVIRONMENTAL WALK-IN INCUBATOR
- ▧ - STERILE TRANSFER ROOMS

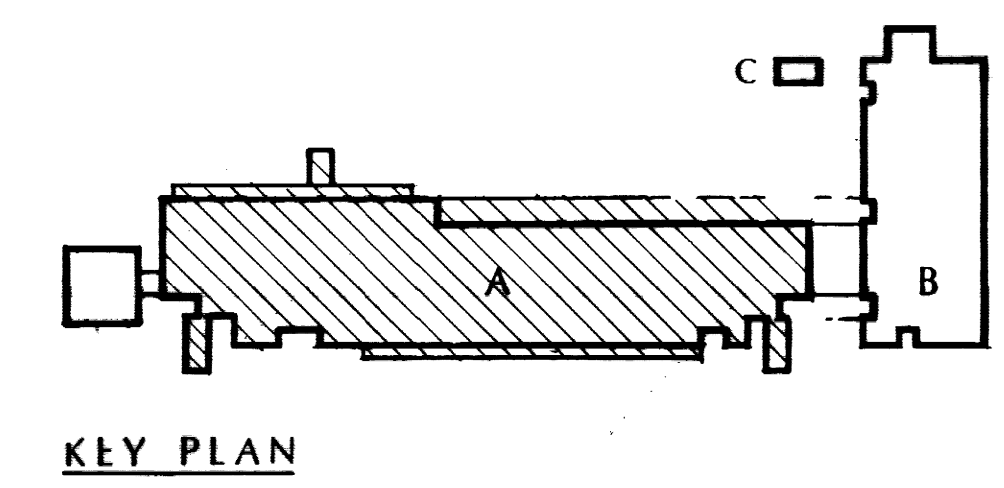
FIRST LEVEL FLOOR PLAN
 SCALE: 1/8" = 1'-0"



23	24



SECOND LEVEL FLOOR PLAN
SCALE: 1/8" = 1'-0"



BICKEL GIBSON ASSOCIATES ARCHITECTS INCORPORATED
181 MIDWELL BUILDING
585 SOUTH THIRD STREET
LOUISVILLE, KENTUCKY 40202 502-582-8177

WHITE, WALKER & McREYNOLDS
CONSULTING ENGINEERS
2041 RECENCY CIRCLE
LEXINGTON, KENTUCKY 40503
STRUCTURAL ENGINEERS

PROCTOR-DAVIS-REAY
CONSULTING ENGINEERS, INC.
400 CORPORATE DRIVE
LEXINGTON, KENTUCKY 40503
MECHANICAL AND ELECTRICAL ENGINEERS

APPROVED BY
[Signature]
DIRECTOR OF DESIGN AND CONSTRUCTION
UNIVERSITY OF KENTUCKY
[Signature]

UNIVERSITY PROJECT NUMBER
230.2

THE MAXWELL H. GLUCK EQUINE RESEARCH CENTER
COLLEGE OF AGRICULTURE
UNIVERSITY OF KENTUCKY, LEXINGTON CAMPUS

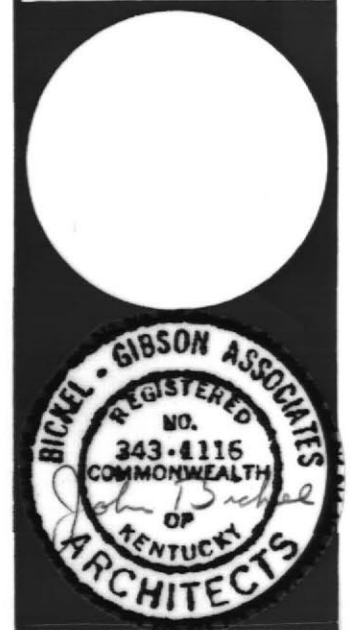
PROJECT NUMBER
8412.01

DRAWN BY
CHECKED BY
LHA

DATE
9/20/08

REVISIONS
4-11-08

SHEET NUMBER
R1.2

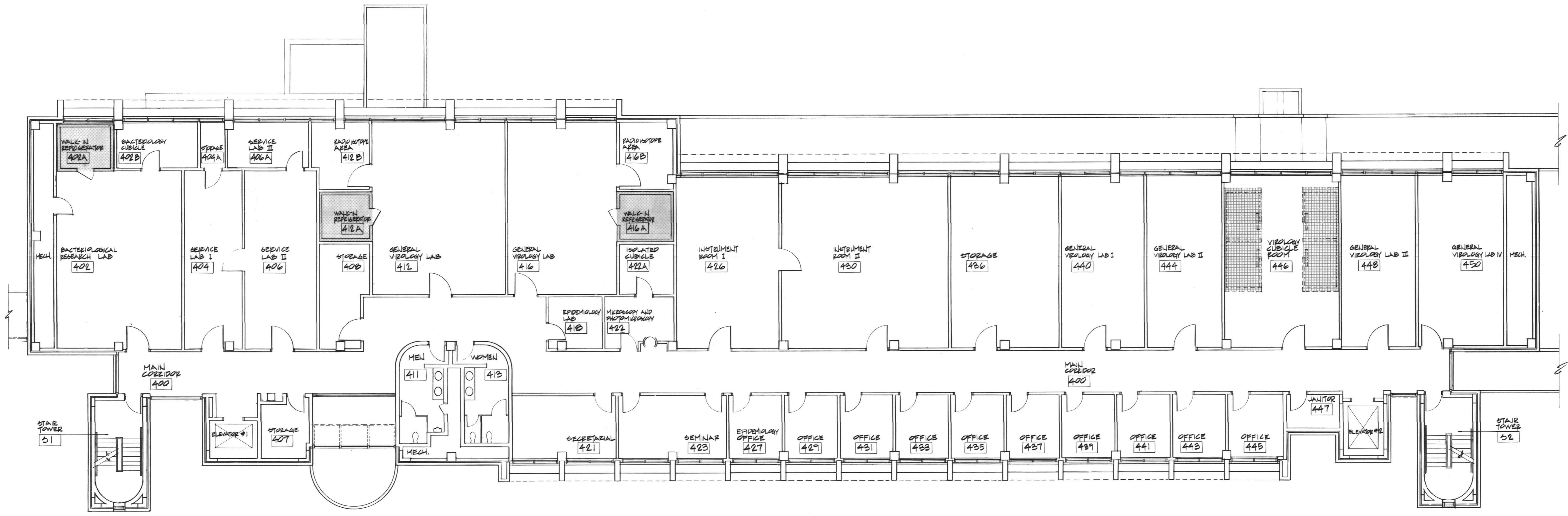


UNIVERSITY PROJECT NUMBER
230.2

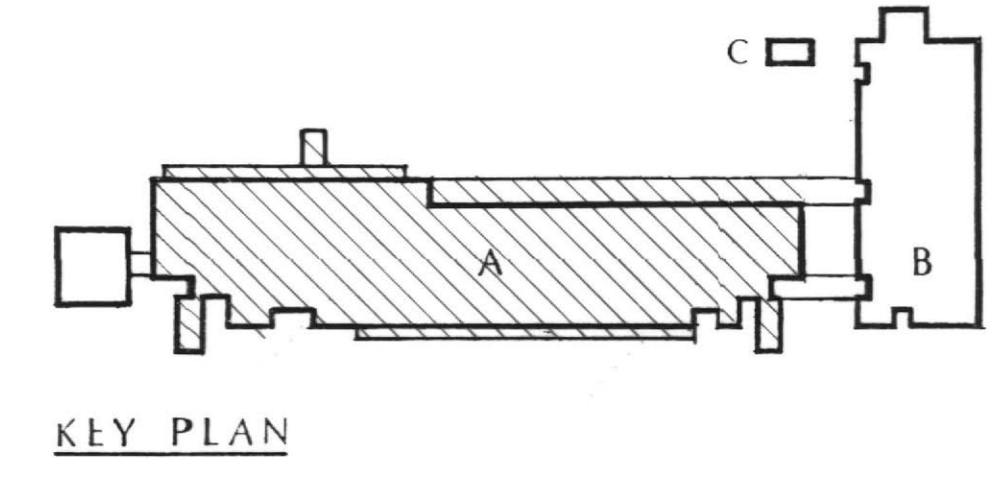
APPROVED BY: [Signature]
 PROJECT DIRECTOR
 UNIVERSITY OF KENTUCKY
 DATE: 10/1/05

THE MAXWELL H. GLUCK EQUINE RESEARCH CENTER COLLEGE OF AGRICULTURE UNIVERSITY OF KENTUCKY, LEXINGTON CAMPUS

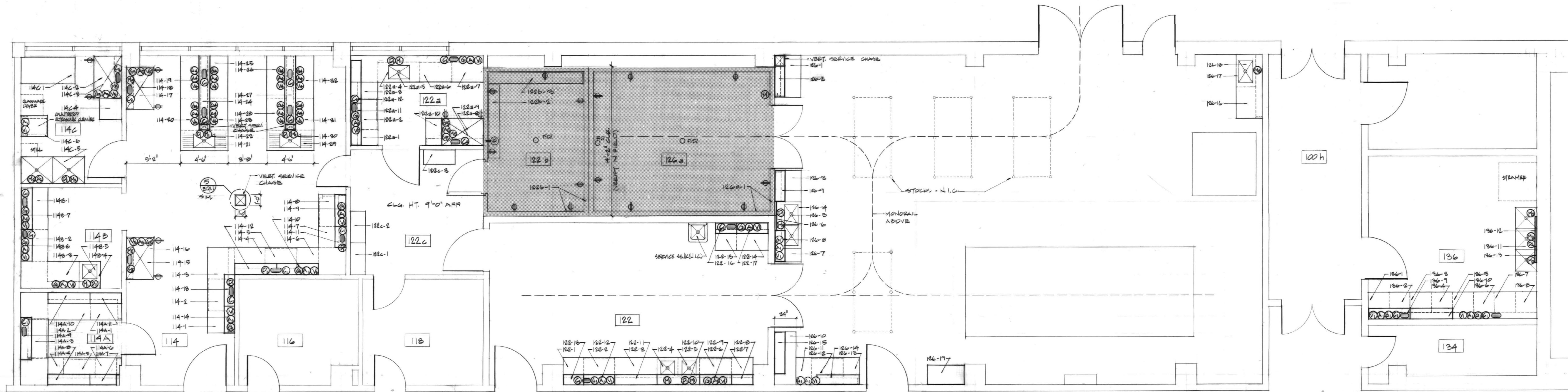
PROJECT NUMBER	8412.01
ITEMS ON SHEET	
DATE	9/20/05
REVISIONS	4-11-06
Drawn by	LHA
Checked by	LHA
Sheet	A-3
Scale	1/8" = 1'-0"



FOURTH LEVEL FLOOR PLAN
 SCALE: 1/8" = 1'-0"



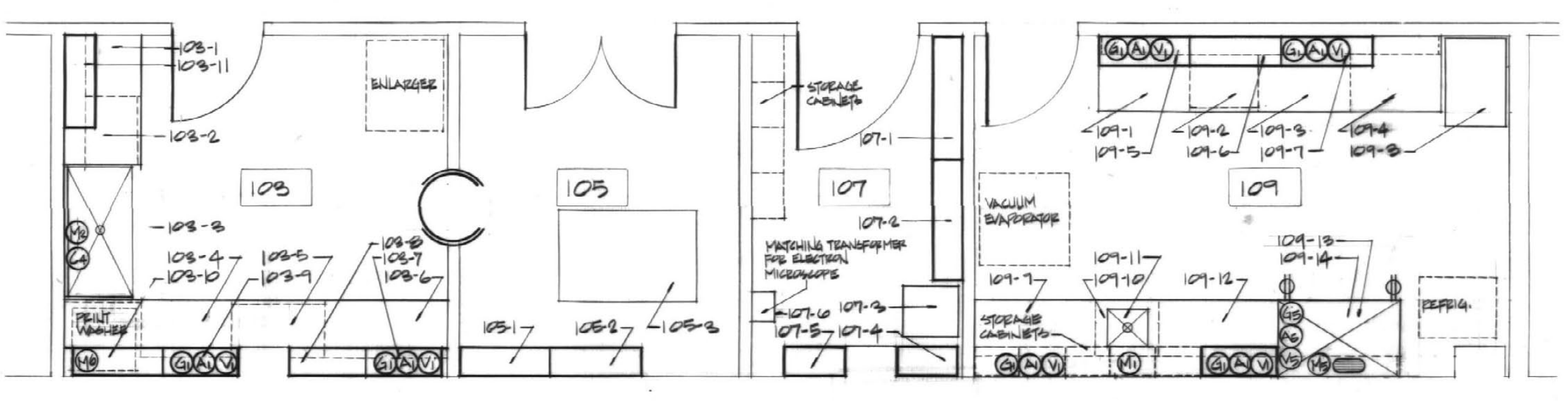
R. 5	
P. 5	
F	



BALANCE ROOM
NUTRITIONAL PATHOLOGY AND CLINICAL PATHOLOGY

ANATOMY LABORATORY

BIOMECHANICS LABORATORY



PHOTOGRAPHIC DARKROOM

ELECTRON MICROSCOPY ROOM

ELECTRON MICROSCOPE INSTRUMENTATION ROOM

ELECTRON MICROSCOPY LABORATORY (PREPARATION)

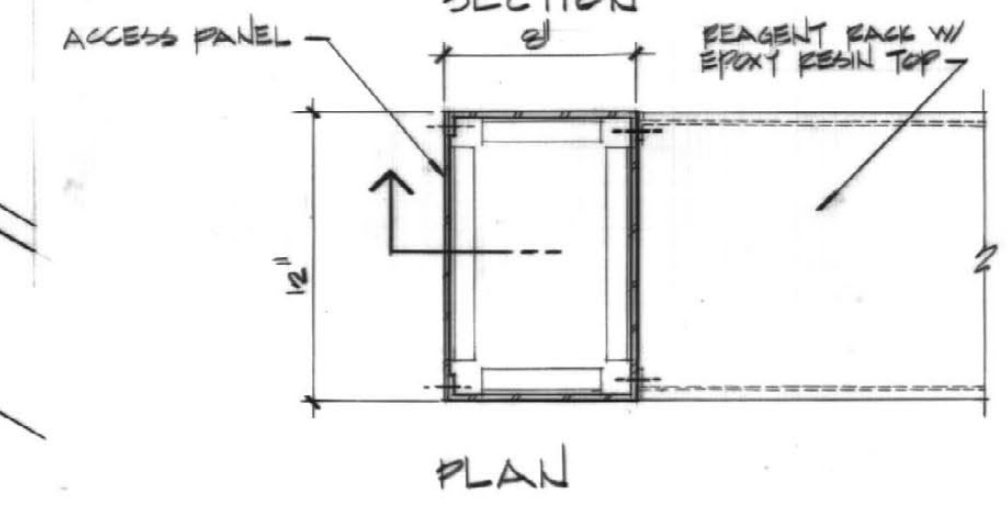
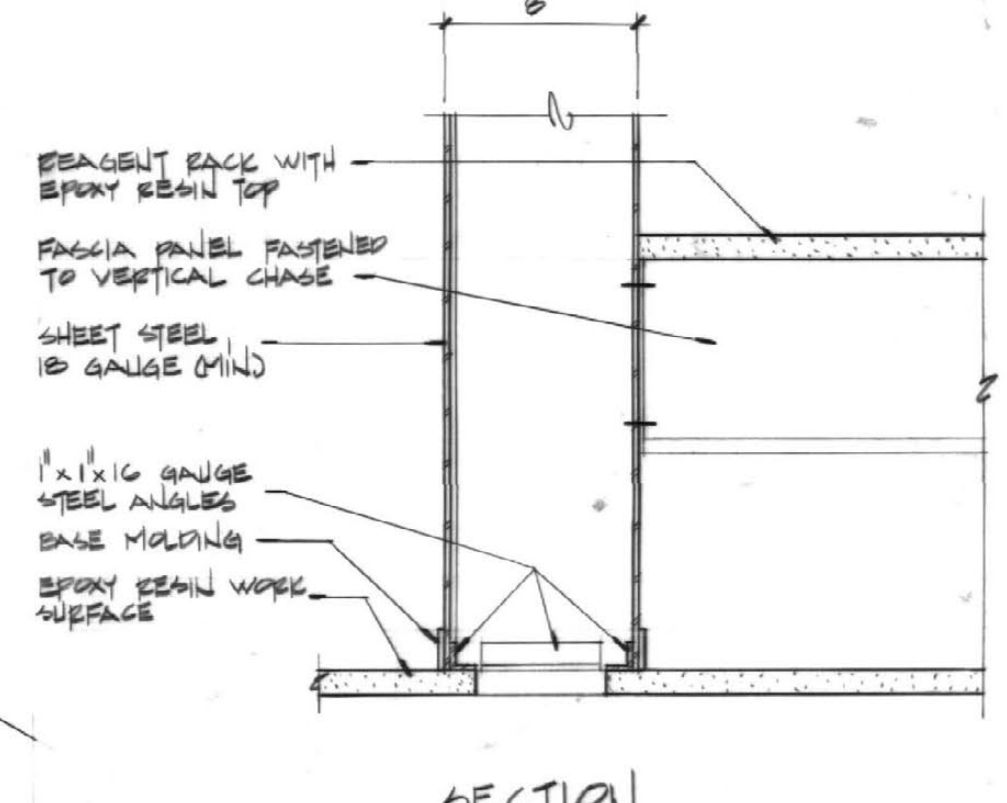
KEY

- 14-S - ALL EQUIPMENT WITH A NUMERICAL REFERENCE SHALL BE CHASED. FURNISH/CONTRACTOR SHALL BE RESPONSIBLE FOR DETERMINING CHASE LOCATIONS AND EQUIPMENT SCHEDULE FOR CLARIFICATION.
- REF. - ALL EQUIPMENT WITHOUT A NUMERICAL REFERENCE AND INDICATED BY DIMED LINES SHALL BE CHASED. FURNISH/CONTRACTOR SHALL BE RESPONSIBLE FOR DETERMINING CHASE LOCATIONS AND EQUIPMENT SCHEDULE FOR CLARIFICATION.

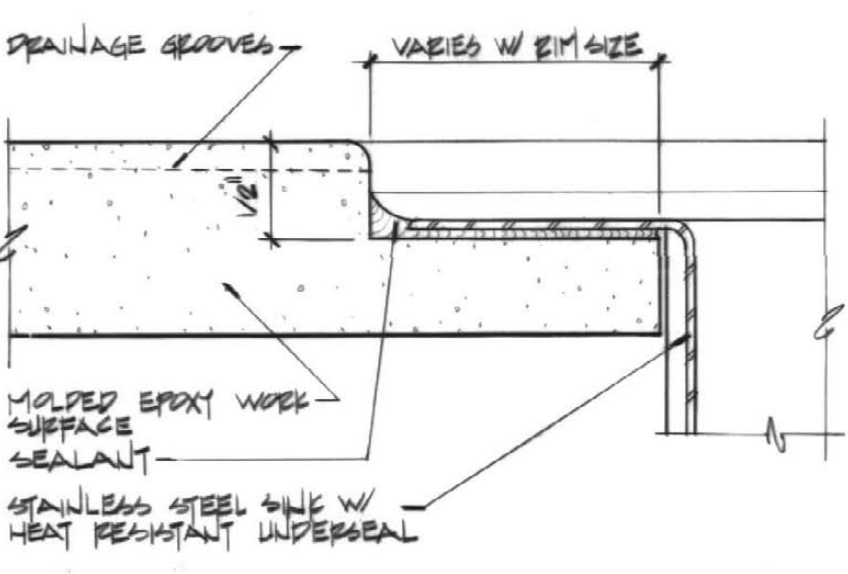
GENERAL NOTES

1. WELD SURFACES OF BASE UNITS SHALL BE 90° DEGREE WELDS DIMENSIONED OR NOTED OTHERWISE. ALL WELD SURFACES OF BASE UNITS OR TABLES SHALL HAVE A ONE (1) INCH (25.4) OVERLAP AT THE FRONT EDGE.
2. WELD SURFACES SHALL BE MOLDED EPOXY BEAM, UNLESS NOTED OR SPECIFIED OTHERWISE.
3. SERVICE FUTURE SYMBOLS ONLY APPROXIMATE ACTUAL LOCATION OF SERVICES.

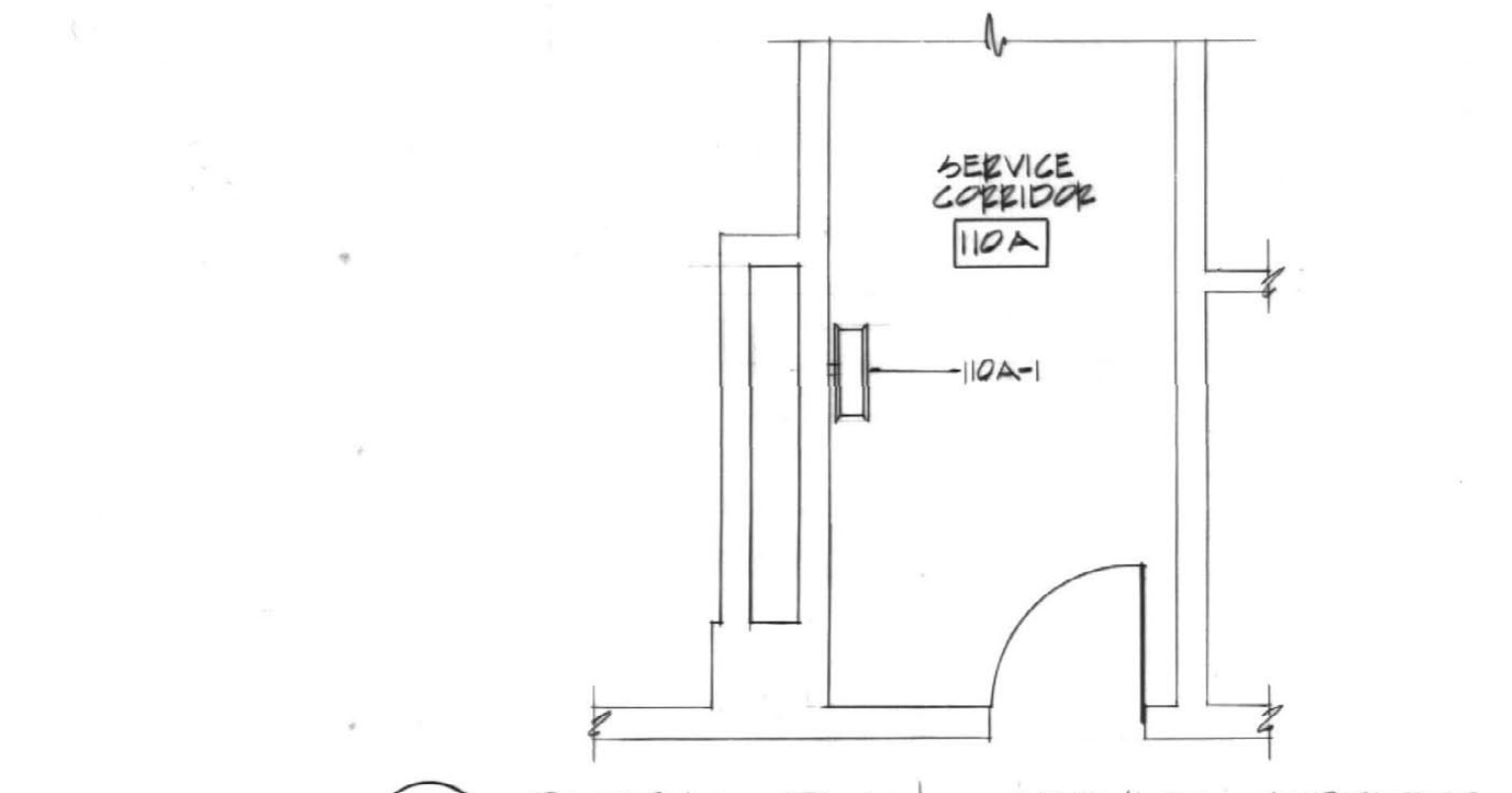
- 1 GND
- 2 AIR
- 3 VACUUM
- 4 COLD WATER
- 5 HOT WATER
- 6 HOT/COLD WATER MIX
- 7 DEIONIZED WATER
- 8 STEAM
- 9 CUP MILK
- 10 DUPLEX OUTLET



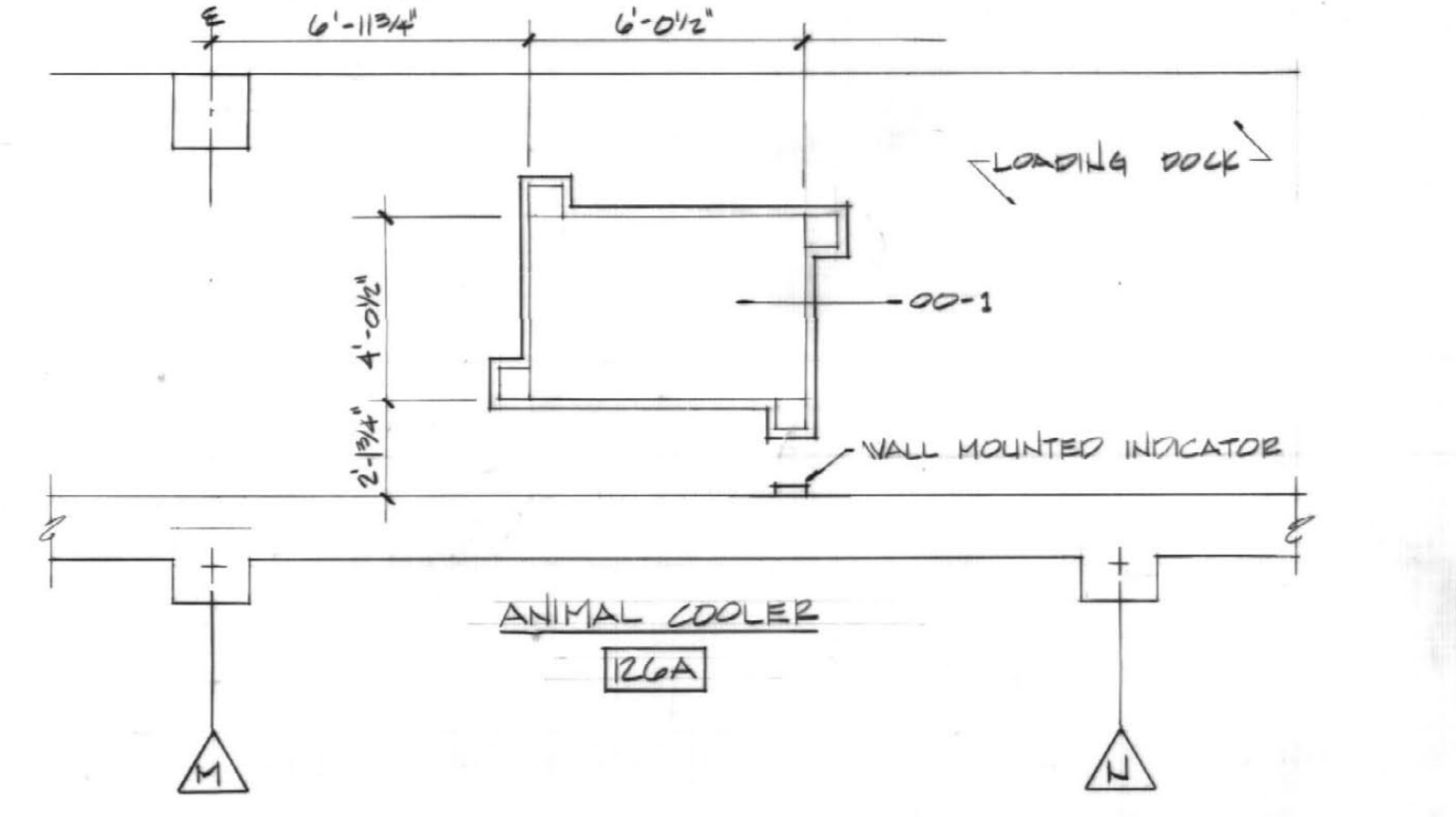
5 VERTICAL SERVICE CHASE DETAILS
SCALE: 1/8" = 1'-0"



4 SINK DETAIL
SCALE: ACTUAL SIZE

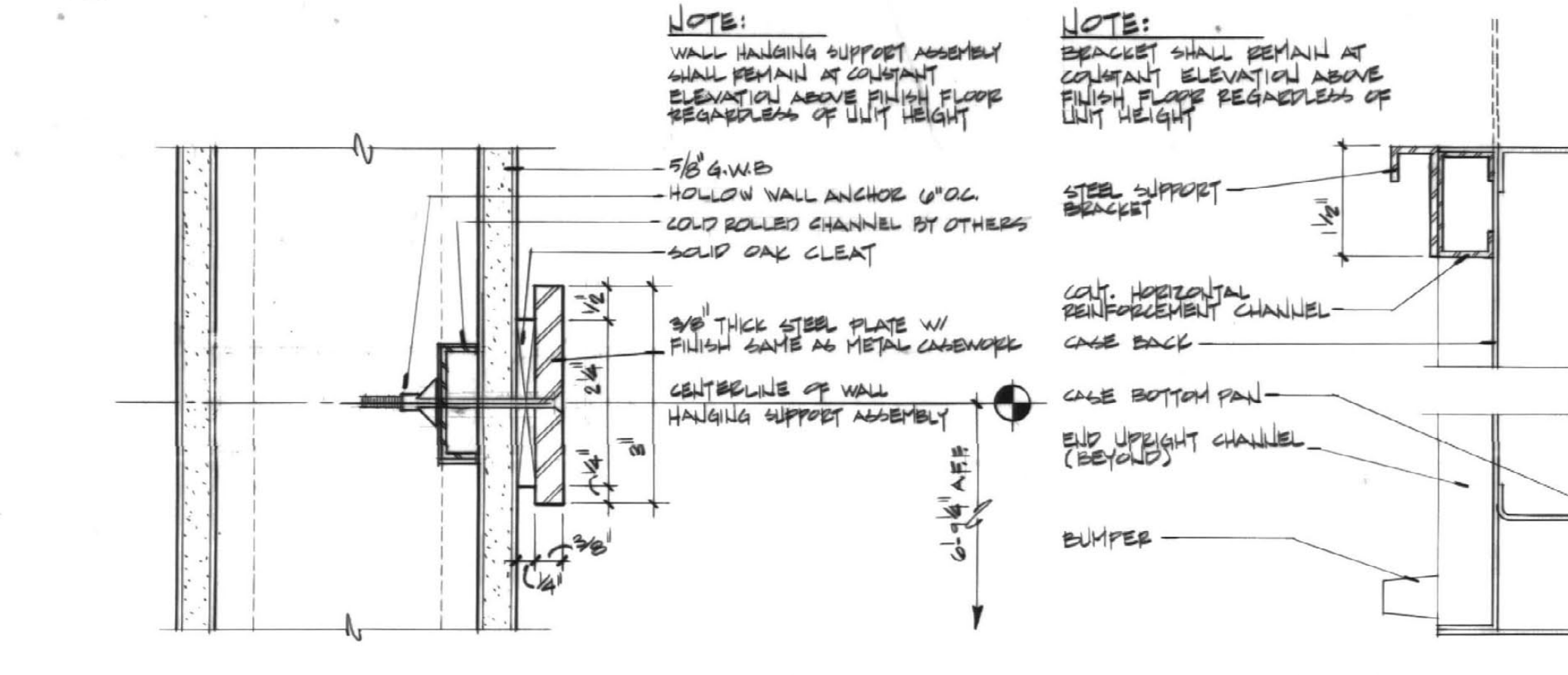


PARTIAL PLAN - SERVICE CORRIDOR
SCALE: 1/4" = 1'-0"

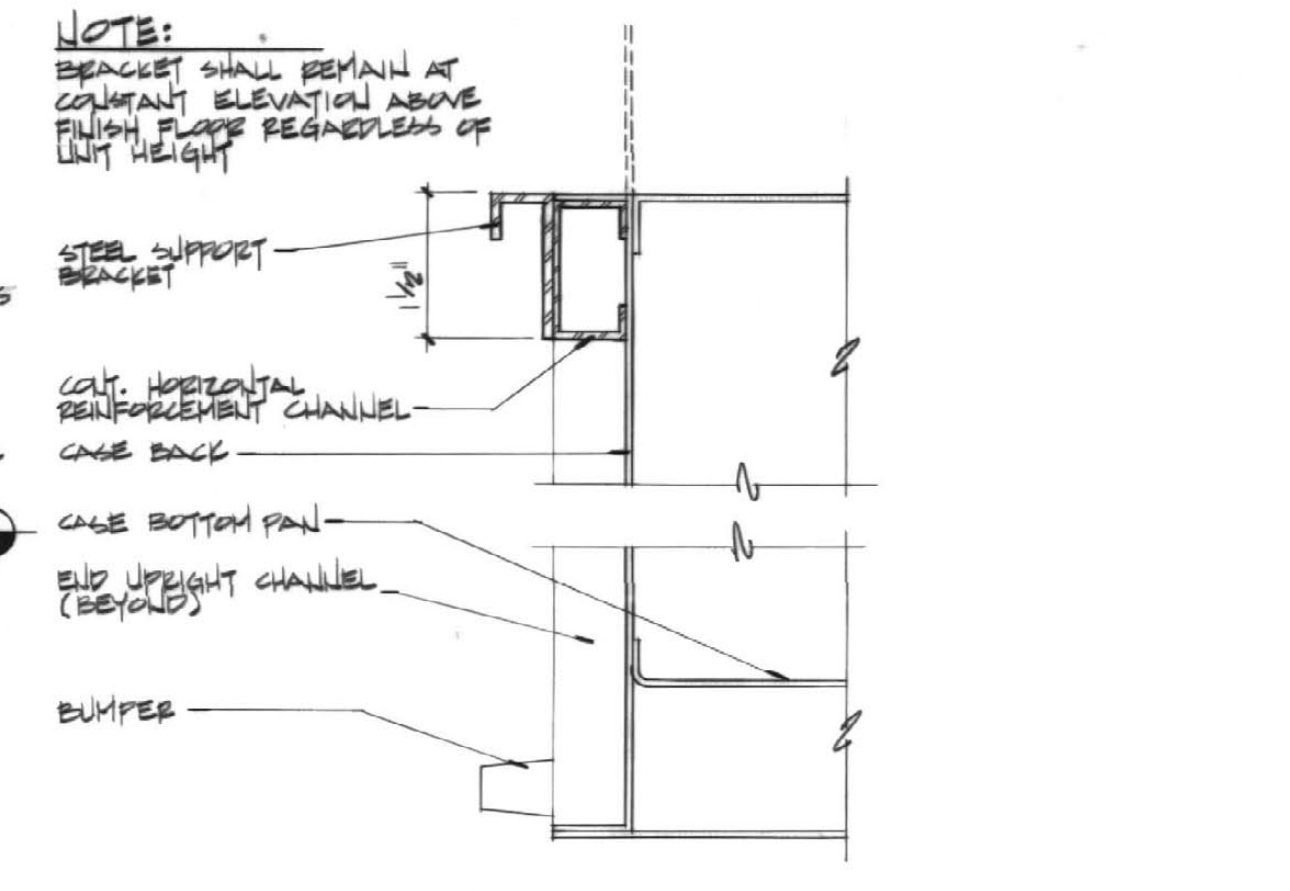


PARTIAL PLAN - COVERED WALKWAY
SCALE: 1/4" = 1'-0"

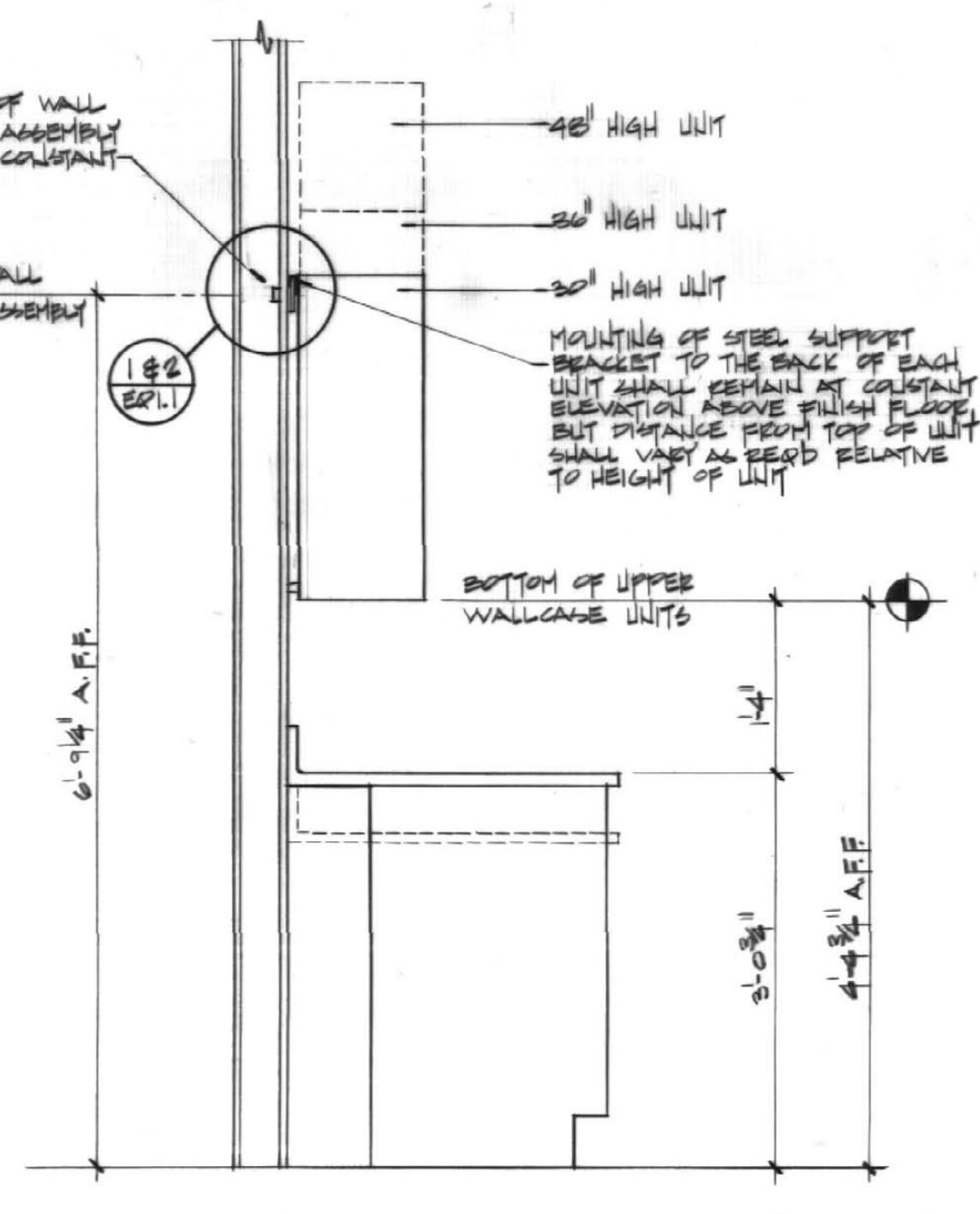
FIRST FLOOR CASEWORK AND EQUIPMENT PLAN
SCALE: 1/4" = 1'-0"



1 WALL HANGING SUPPORT ASSEMBLY
SCALE: HALF ACTUAL SIZE



2 WALL CASE BRACKET DETAIL
SCALE: HALF ACTUAL SIZE



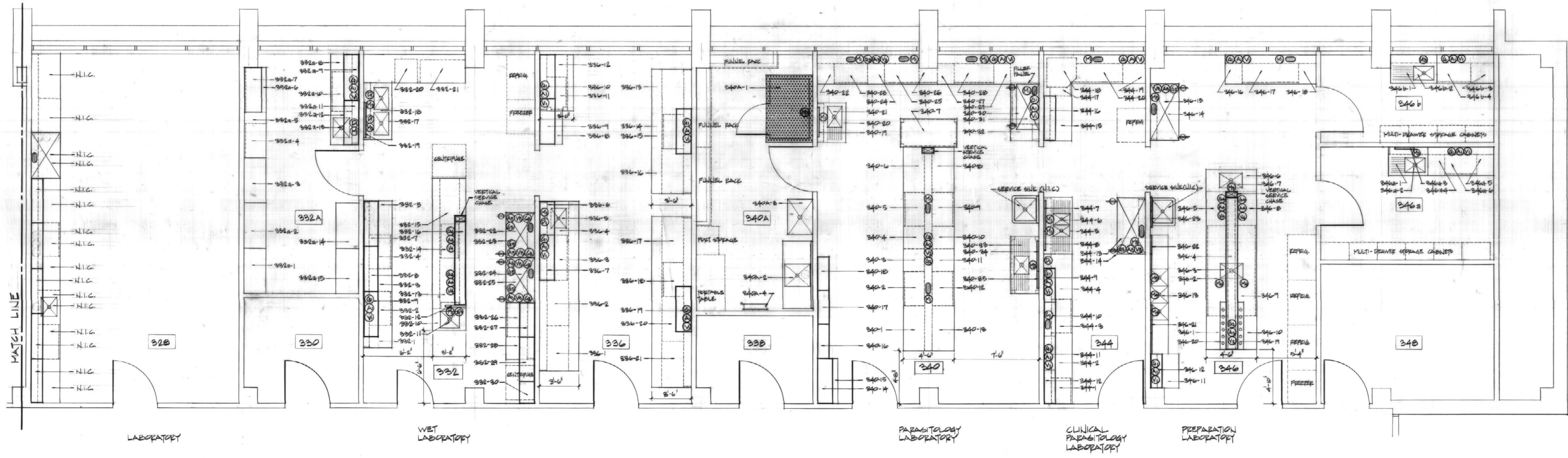
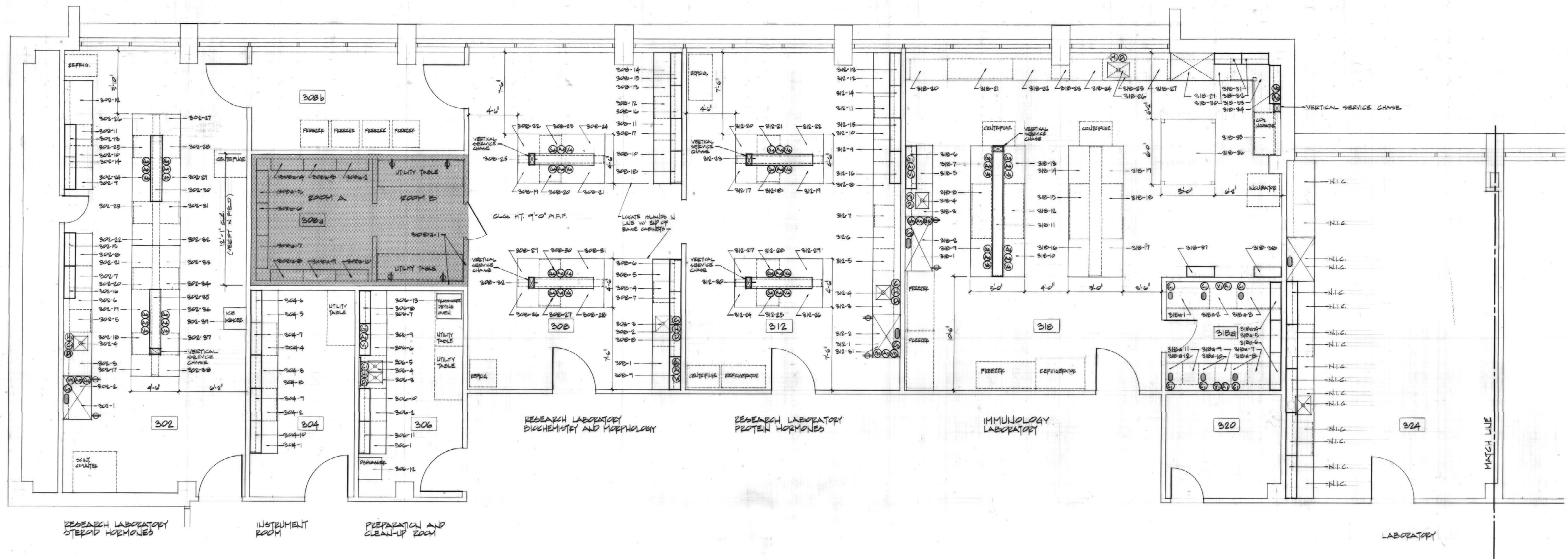
3 WALL CASE MOUNTING DETAIL
SCALE: 3/4" = 1'-0"

BICKEL GIBSON ASSOCIATES ARCHITECTS INCORPORATED
501 SOUTH THIRD STREET
LOUISVILLE, KENTUCKY
40202 502 587 8771

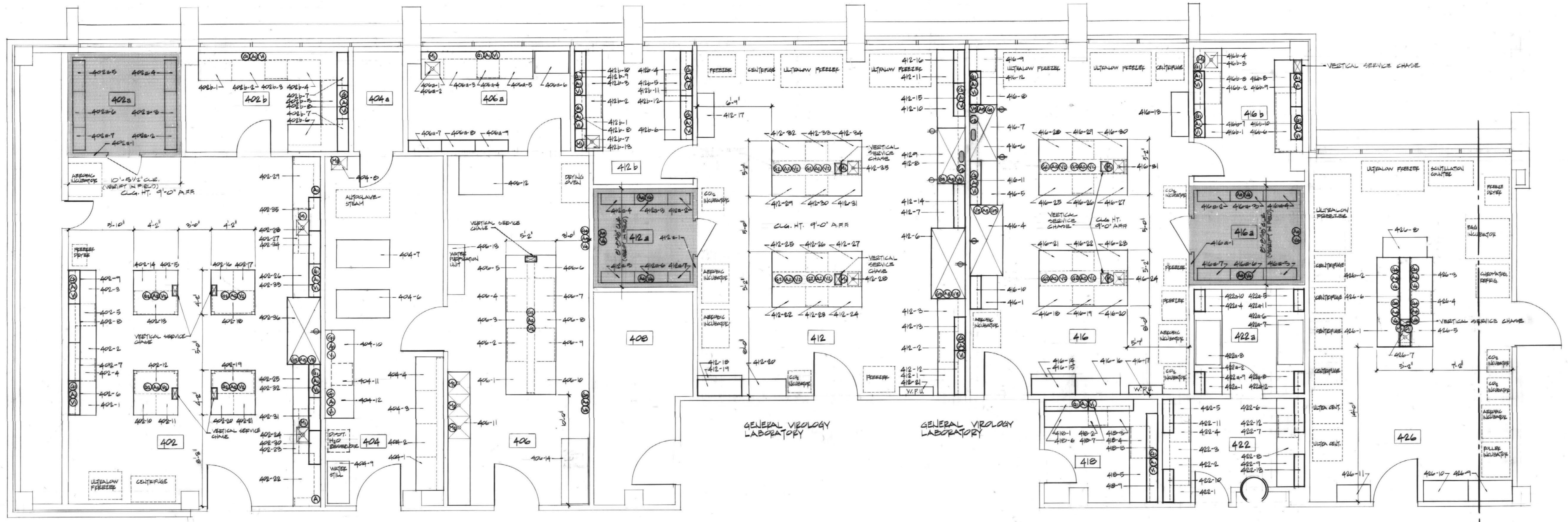
WHITE, WALKER & HICKY CONSULTING ENGINEERS
STRUCTURAL ENGINEERS
PROCTOR-DAVIS-RAV CONSULTING ENGINEERS, INC.
MECHANICAL AND ELECTRICAL ENGINEERS

BICKEL GIBSON ASSOCIATES ARCHITECTS
PROJECT NUMBER
EQ1.1
DRAWN BY
MPH
CHECKED BY
LHA
DATE
9-20-03
REVISIONS
4-11-06
SHEET NUMBER
EQ1.1

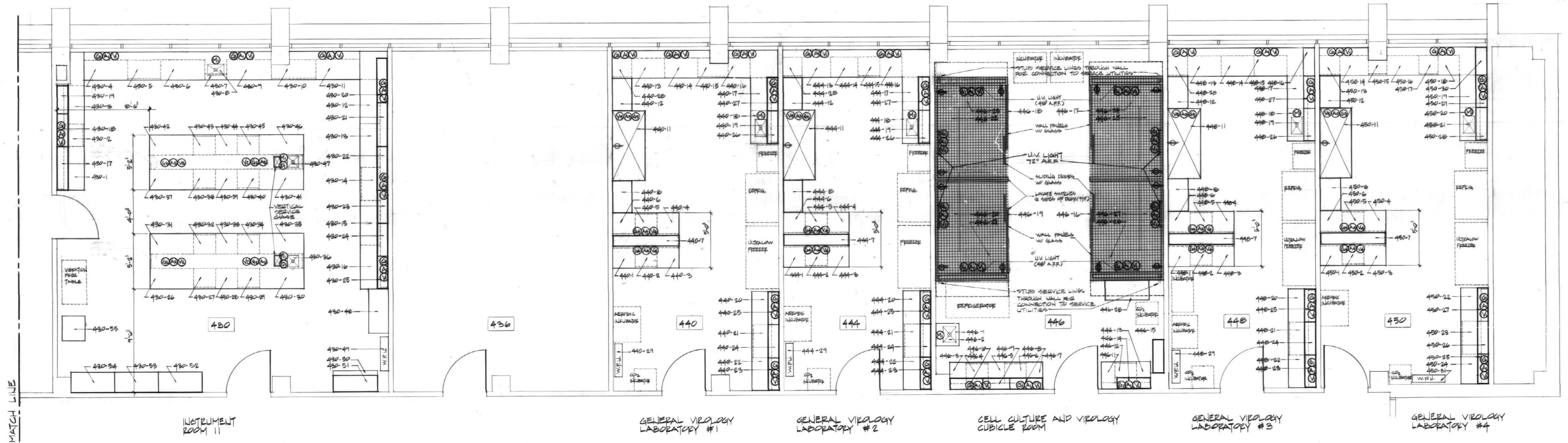
BUILDING A - LABORATORY PLANS DETAILS



THIRD FLOOR CASEWORK AND EQUIPMENT PLAN
SCALE: 1/4" = 1'-0"



BACTERIOLOGICAL RESEARCH LABORATORY SERVICE LABORATORY #1 SERVICE LABORATORY #2 GENERAL VIROLOGY LABORATORY EPIDEMIOLOGY LABORATORY MICROSCOPY AND PHOTOMICROSCOPY INSTRUMENT ROOM #1 MATCH LINE



INSTRUMENT ROOM #1 GENERAL VIROLOGY LABORATORY #1 GENERAL VIROLOGY LABORATORY #2 CELL CULTURE AND VIROLOGY CUBICLE ROOM GENERAL VIROLOGY LABORATORY #3 GENERAL VIROLOGY LABORATORY #4

FOURTH FLOOR CASEWORK AND EQUIPMENT PLAN
SCALE: 1/4" = 1'-0"

BICKEL GIBSON ASSOCIATES ARCHITECTS INCORPORATED
285 SOUTH THIRD STREET, LOUISVILLE, KENTUCKY 40202 502.582.5471

WHITE, WALKER & BEECHER CONSULTING ENGINEERS
1001 HENRY STREET, LOUISVILLE, KENTUCKY 40203

PROCTOR-DAVIS-RAY CONSULTING ENGINEERS, INC.
400 CORPORATE DRIVE, BIRMINGHAM, ALABAMA 35202

REGISTERED ARCHITECTS
230.2

APPROVED BY: [Signature]
DIRECTOR OF DESIGN AND CONSTRUCTION
UNIVERSITY OF KENTUCKY

DATE: 10/16/05

PROJECT NUMBER: EQ1.3.01
ITEM ON SHEET: FOURTH FLOOR CASEWORK PLAN

DRAWN BY: MPH
CHECKED BY: LHA

DATE: 4-20-05
REVISIONS: 4-11-06

SHEET NUMBER: EQ1.3