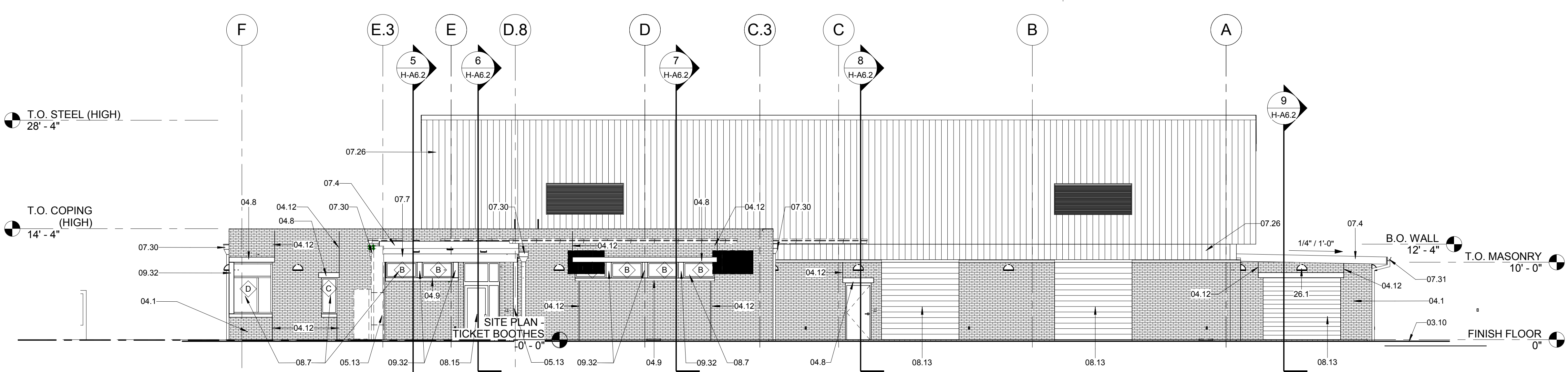
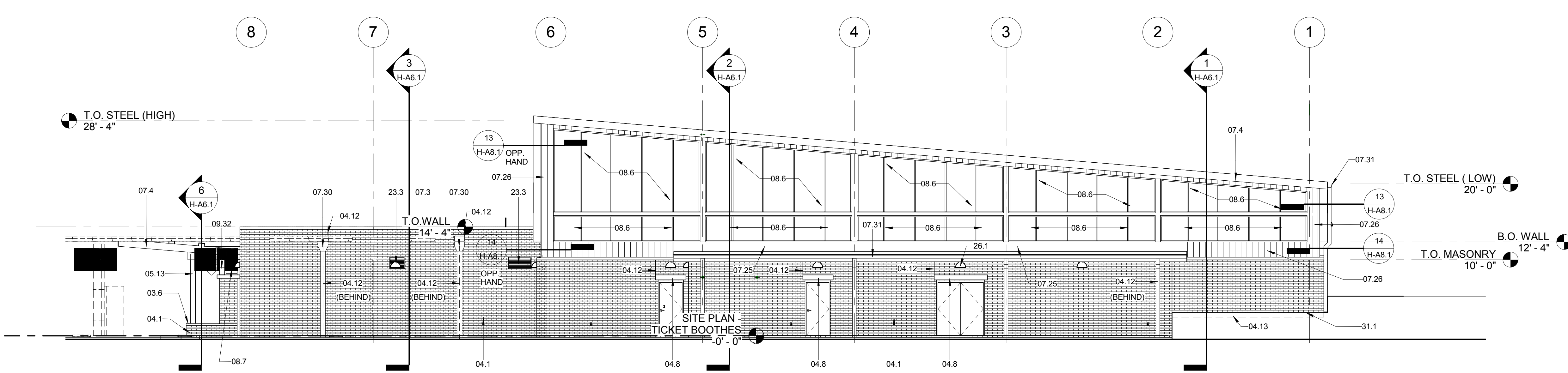


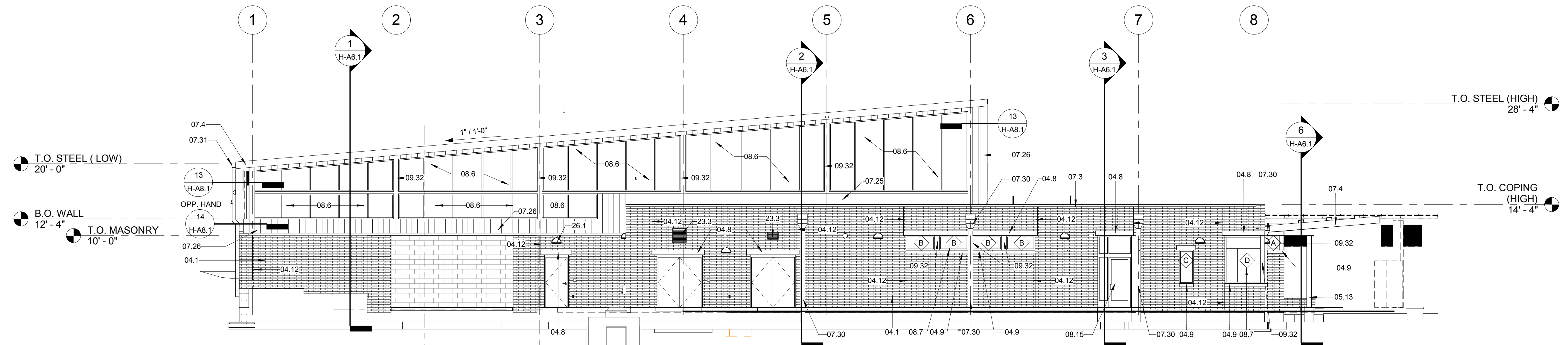
1 NORTH ELEVATION
H-A1.1 SCALE: 1/8" = 1'-0"



2 SOUTH ELEVATION
H-A1.1 SCALE: 1/8" = 1'-0"



3 EAST ELEVATION
H-A1.1 SCALE: 1/8" = 1'-0"



4 WEST ELEVATION
H-A1.1 SCALE: 1/8" = 1'-0"

KEYNOTES

- 03.6 CONCRETE BENCH, SEALER.
- 03.10 SERVICE DRIVE, REFER TO CIVIL DRAWINGS.
- 04.1 FACE BRICK RUNNING BOND.
- 04.8 CAST STONE SILL WITH SEPARATION SHEET PER MNF, TYP.
- 04.9 CAST STONE SILL WITH SEPARATION SHEET PER MNF, TYP.
- 04.12 FACE BRICK CONTROL JOINT.
- 04.13 BRICK LEDGE.
- 05.13 STEEL COLUMN, PAINT WHERE EXPOSED.
- 07.3 PREFINISHED METAL COPING SYSTEM WITH CLEATS.
- 07.4 PREFINISHED METAL FASCIA WRAPPED ON 2X12 P.T. WOOD.
- 07.5 PREFINISHED METAL FLASHING.
- 07.7 PREFINISHED METAL FASCIA WRAPPED ON 2X14 P.T. WOOD.
- 07.21 TPO ROOFING SYSTEM ON 4" MIN. TAPERED RIGID INSULATION, 1/4" PER FT. MIN. SLOPE TO DRAIN. FLASH PER NRCA SPECIFICATIONS. TURN ROOF MEMBRANE UP WALL 12" AND COUNTERFLASH W/EXPANSION JOINT.
- 07.25 TPO FLASHING MEMBRANE. ADHERE TO EXTERIOR GRADE SHEATHING ON METAL FRAMING AND EXTEND OVER WOOD NAILERS BENEATH METAL COPING.
- 07.26 INSULATED METAL WALL PANEL SYSTEM.
- 07.30 PREFINISHED METAL CONDUCTOR HEAD AND DOWNSPOUT SYSTEM.
- 07.31 PREFINISHED 8" X 8" METAL GUTTER AND 5" X 6" DOWNSPOUT SYSTEM.
- 08.6 TRANSLUCENT PANEL SYSTEM.
- 08.7 PREFINISHED ALUMINUM STOREFRONT SYSTEM.
- 08.13 OVERHEAD ROLLING DOOR SYSTEM WITH TRACK AND HOOD.
- 08.15 ALUMINUM DOOR FRAME, SEALANT CONTINUOUS AT PERIMETER ON BOTH SIDES.
- 09.32 BREAK METAL TO MATCH STOREFRONT.
- 23.2 MECHANICAL EQUIPMENT.
- 23.3 PREFINISHED LOUVER.
- 26.1 LIGHT FIXTURE.
- 31.1 APPROXIMATE FINISH GRADE. SLOPE AWAY FROM BUILDING.

RECORD DRAWING

THESE RECORD DOCUMENTS HAVE BEEN PREPARED BASED ON THE INFORMATION PROVIDED BY OTHERS. THE ARCHITECT HAS NOT VERIFIED THE ACCURACY AND/OR COMPLETENESS OF THE INFORMATION AND SHALL NOT BE RESPONSIBLE FOR ANY ERRORS OR OMISSIONS THAT MAY BE INCORPORATED AS A RESULT OF ERRONEOUS INFORMATION PROVIDED BY OTHERS.

DATE: 5/14/2014 BY: DLB

737 South Third Street, Louisville, Kentucky 40202-2100
502.582.4181 502.582.0488 Fax: www.luckettfarley.com
Master Planning | Architecture | Engineering | Interior Design
Design | Build | Building Commissioning | Special Inspections

[smart design]™
Luckett & Farley
© 2012

University of Kentucky
Renovate/Upgrade Softball Complex
PROJECT NUMBER: 2338.0
SOUTH CAMPUS
ALUMINUM COLLEGE WAY
LEXINGTON, KENTUCKY

UK

REVISIONS

#	Description	Date
1		10/09/12

CONTRACT NO. 2012.030.00

MADE BY NF CHECKED

DATE 2/14/13

HITTING PAVILION
EXTERIOR
ELEVATIONS

DRAWING NO. H-A5.1

6/9/2014 11:37:12 AM
C:\Users\dbratche\Documents\201230_ARCH_ARCH_DBRATCHER.rvt

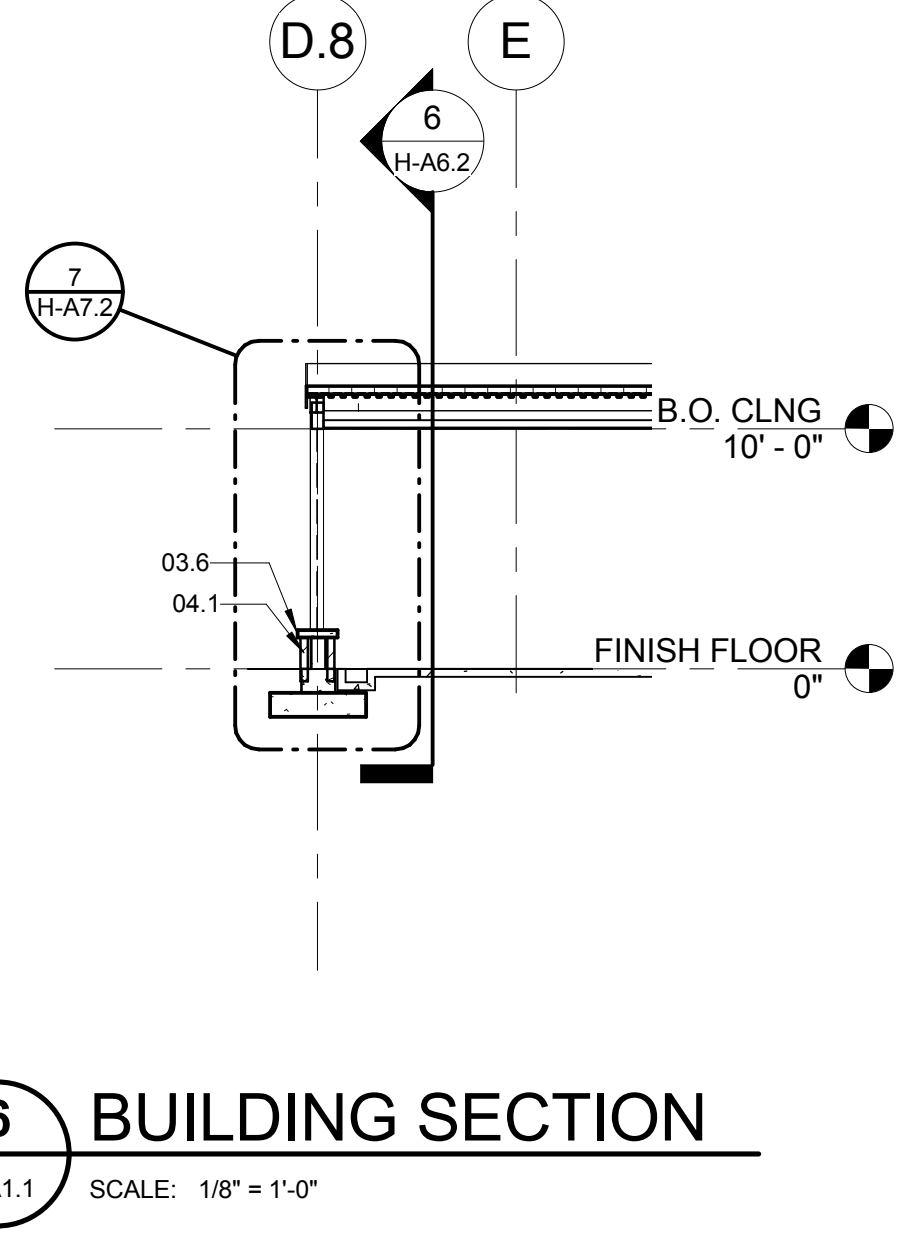
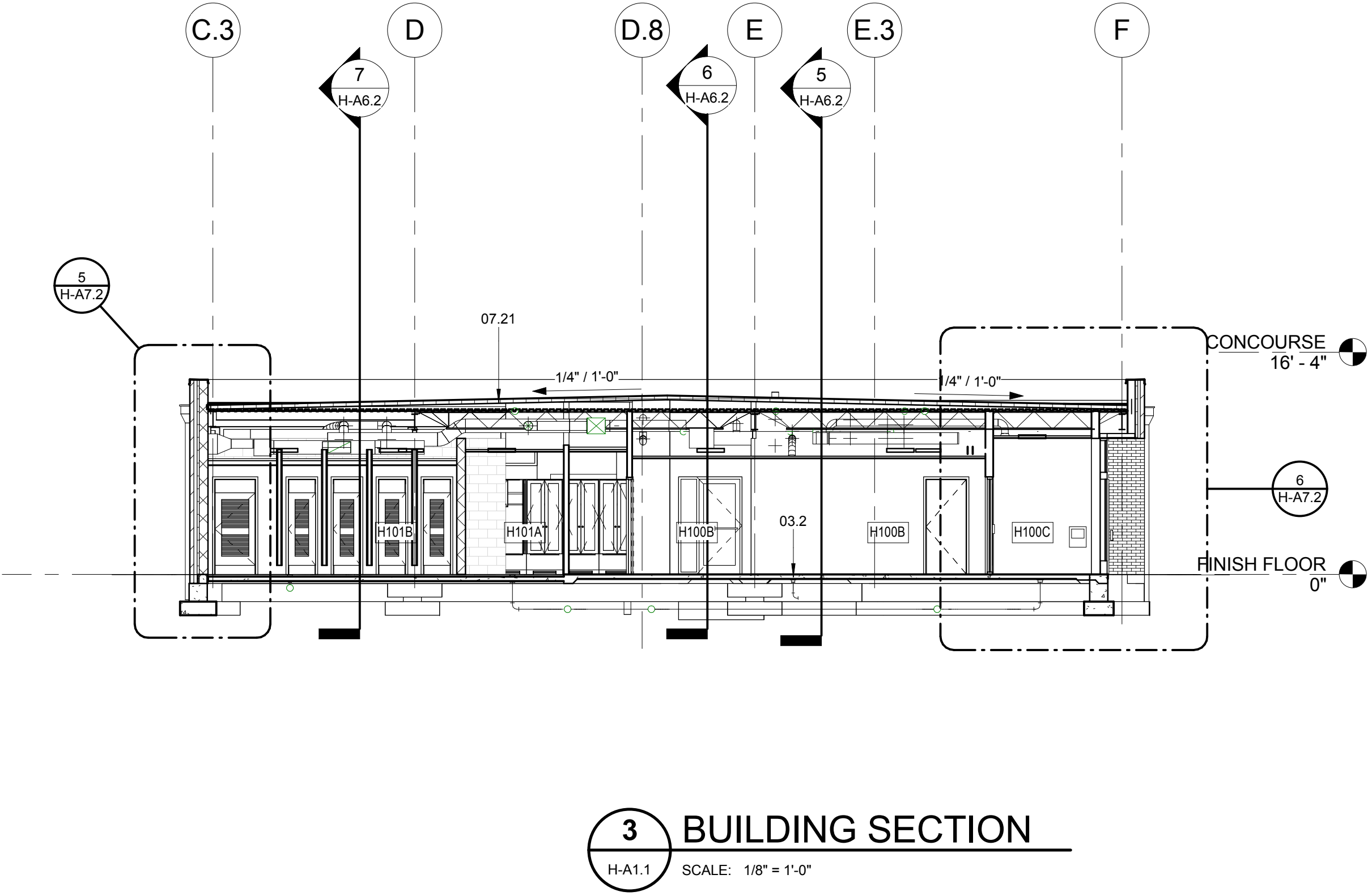
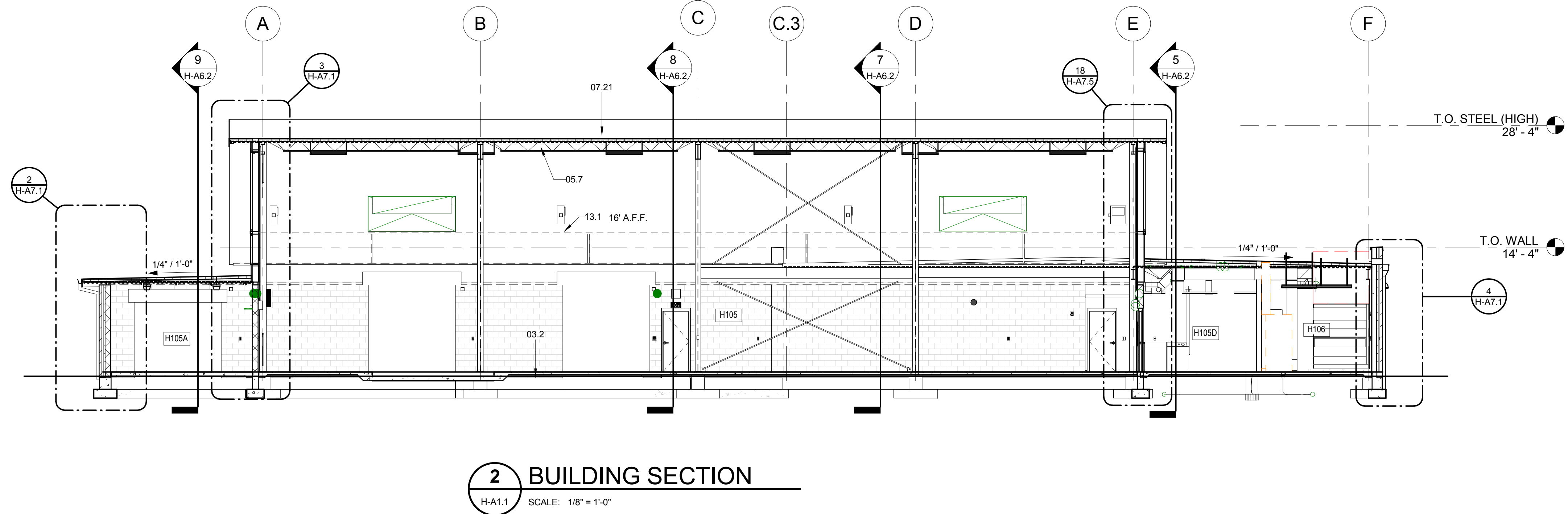
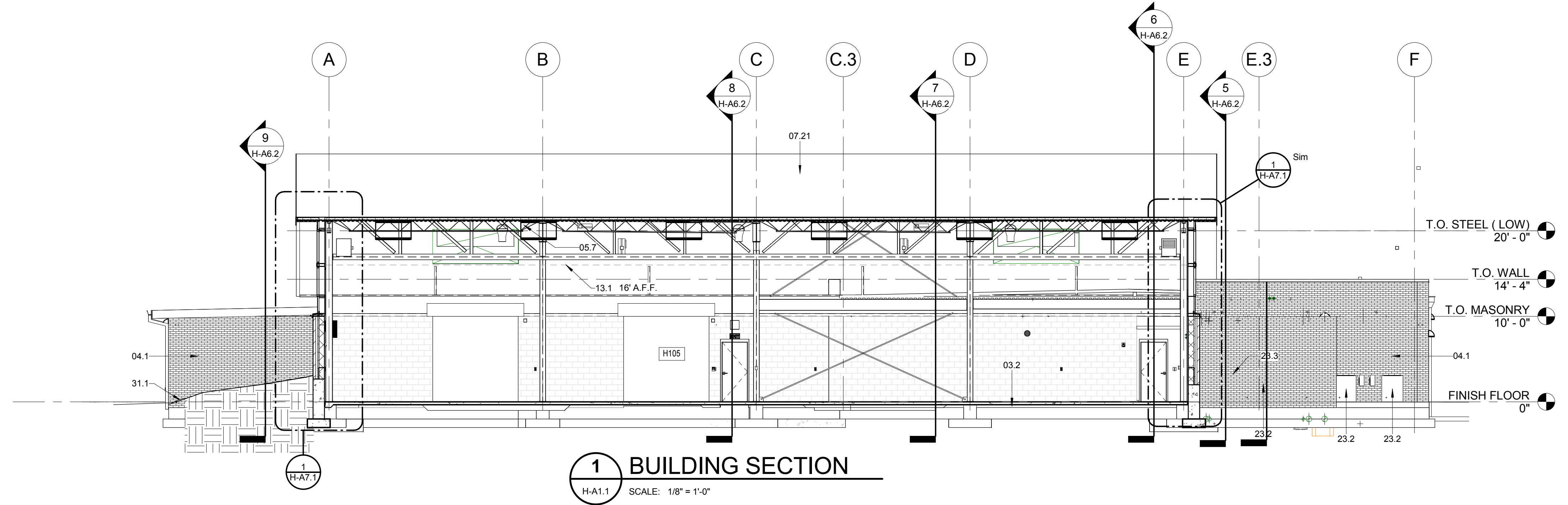
REVISIONS		
#	Description	Date

CONTRACT NO.	2012.030.00
MADE BY	NWF
CHECKED	
DATE	2/14/13
HITTING PAVILION BUILDING SECTIONS	
DRAWING NO.	H-A6.1
REV. NO.	

KEYNOTES

NO.	NAME	NET SQ. FT.	
H100	MUD ROOM	88 SF	03.2
H100A	VEST	68 SF	03.6
H100B	CORRIDOR	295 SF	04.1
H100C	VEST	43 SF	05.7
H101	LOCKERS	562 SF	07.21
H101A	LAVATORIES	164 SF	
H101B	TOILETS	172 SF	13.1
H101C	SHOWER	177 SF	
H102	OFFICE	258 SF	23.2
H102A	TOILET	85 SF	31.1
H102B	VIDEO CLOSET	7 SF	
H103	JAN / MECH.	110 SF	
H104	LOUNGE	890 SF	
H105	HITTING PAVILION	10226 SF	
H105A	FIELD STORAGE 2	431 SF	
H105B	TEAM STORAGE 1	554 SF	
H105D	TEAM STRG 2	93 SF	
H105E	TELECOM	91 SF	
H106	MECH. / ELEC.	186 SF	
H107	FIRE PUMP	314 SF	

- CONCRETE SLAB ON GRADE.
- CONCRETE BENCH SEALER.
- FACE BRICK RUNNING BOND.
- STRUCTURAL FRAMING, PAINT WHERE EXPOSED.
- TPO ROOFING SYSTEM ON 4" MIN. TAPERED RIGID INSULATION, 1/4" PER FT. MIN. SLOPE TO DRAIN. FLASH PER NRCA SPECIFICATIONS. TURN ROOF MEMBRANE UP WALL 12" AND COUNTERFLASH W/EXPANSION JOINT.
- NETTING
- MECHANICAL EQUIPMENT.
- PREFINISHED LOUVER
- APPROXIMATE FINISH GRADE. SLOPE AWAY FROM BUILDING.

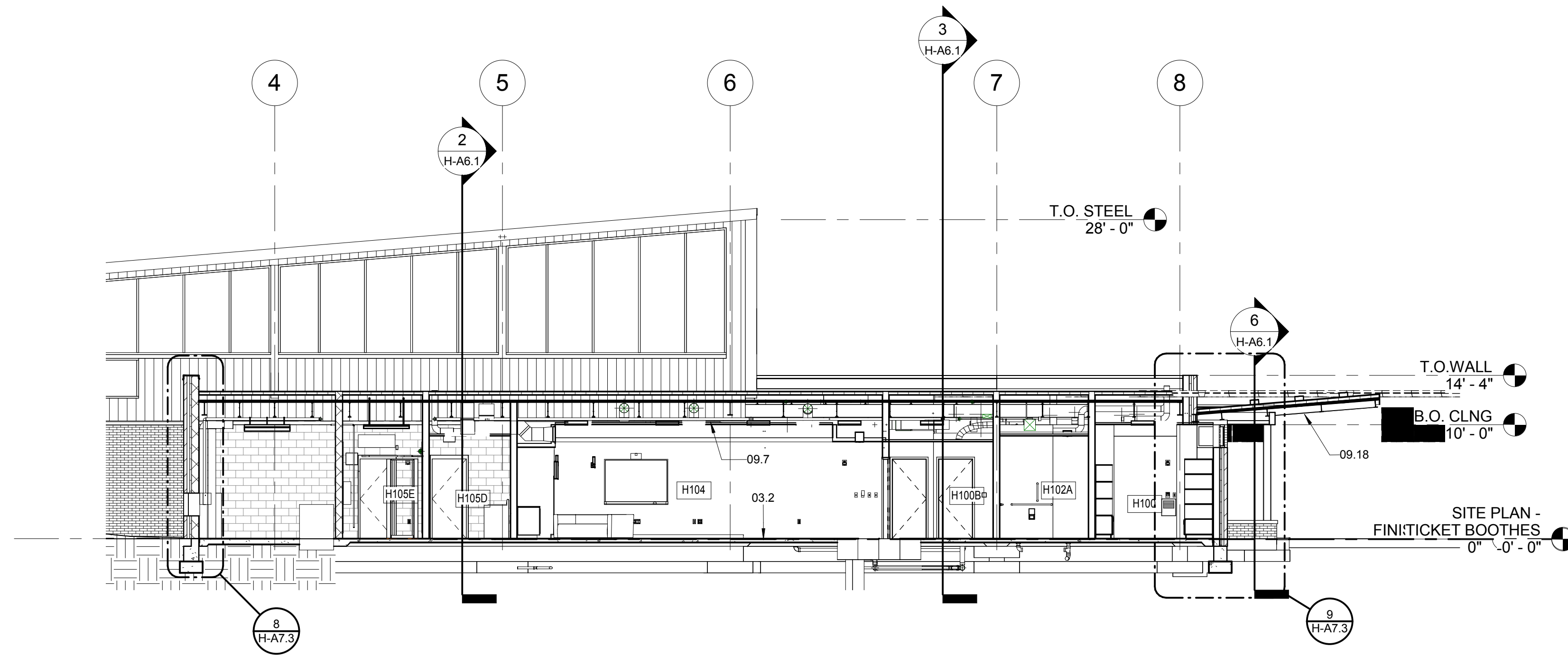


HP ROOM NAME LIST

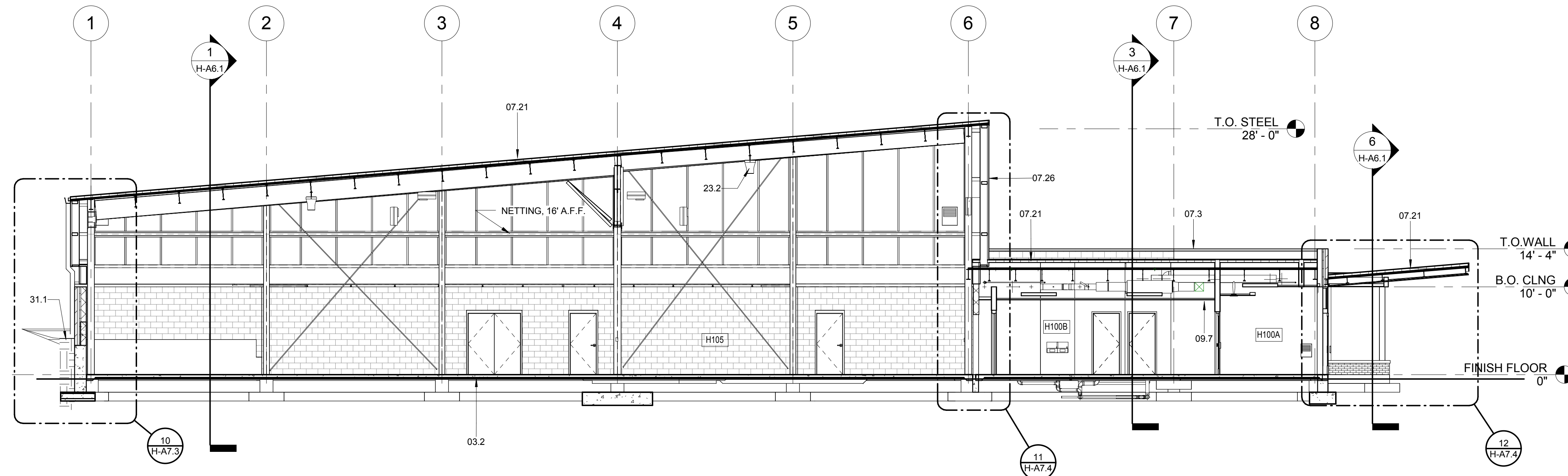
NO.	NAME	NET SQ. FT.
H100	MUD ROOM	88 SF
H100A	VEST.	88 SF
H100B	CORRIDOR	295 SF
H100C	VEST.	43 SF
H101	LOCKERS	562 SF
H101A	LAVATORIES	164 SF
H101B	TOILETS	172 SF
H101C	SHOWER	177 SF
H102	OFFICE	258 SF
H102A	TOILET	85 SF
H102B	VIDEO CLOSET	7 SF
H103	JAN / MECH.	110 SF
H104	LOUNGE	890 SF
H105	HITTING PAVILION	10226 SF
H105A	FIELD STORAGE 2	431 SF
H105B	TEAM STORAGE 1	554 SF
H105D	TEAM STRG 2	93 SF
H105E	TELECOM	91 SF
H106	MECH. / ELEC.	186 SF
H107	FIRE PUMP	314 SF

KEYNOTES

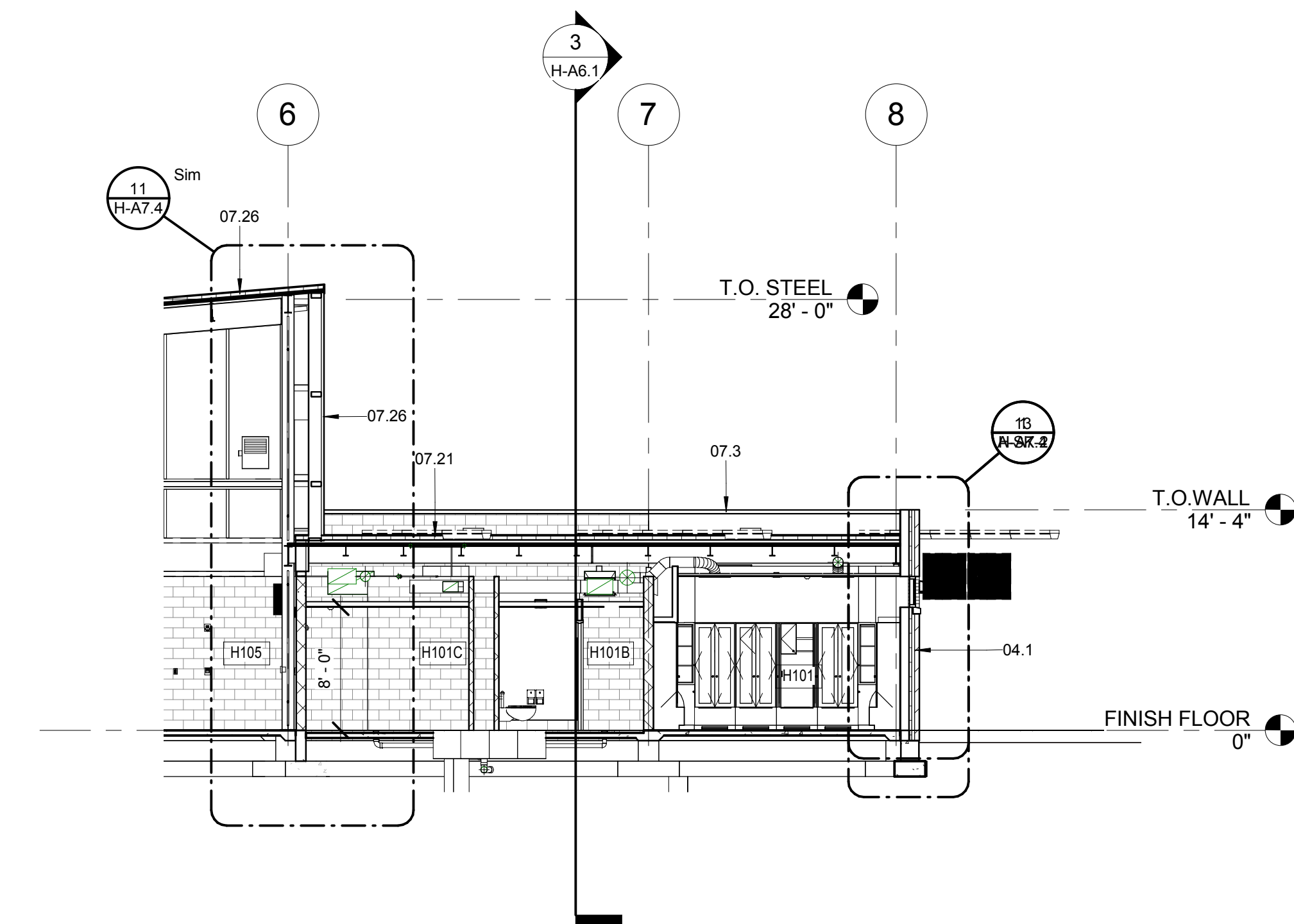
- 03.2 CONCRETE SLAB ON GRADE.
- 03.11 CONCRETE RETAINING WALL.
- 04.1 FACE BRICK RUNNING BOND.
- 05.7 STRUCTURAL FRAMING, PAINT WHERE EXPOSED.
- 07.3 PREFINISHED METAL CORNING SYSTEM WITH CLEATS.
- 07.21 TPO ROOFING SYSTEM ON 4" MIN. TAPERED RIGID INSULATION, 1/4" PER FT. MIN. SLOPE TO DRAIN. FLASH PER NRCA SPECIFICATIONS. TURN ROOF MEMBRANE UP WALL 12" AND COUNTERFLASH W/EXPANSION JOINT.
- 07.26 INSULATED METAL WALL PANEL SYSTEM.
- 09.7 SCHEDULED CEILING
- 09.18 PREFINISHED METAL CEILING SYSTEM WITH END CLOSURE AND FURRING ON 1 1/2" METAL FRAMING AS REQUIRED.
- 23.2 MECHANICAL EQUIPMENT.
- 31.1 APPROXIMATE FINISH GRADE. SLOPE AWAY FROM BUILDING.



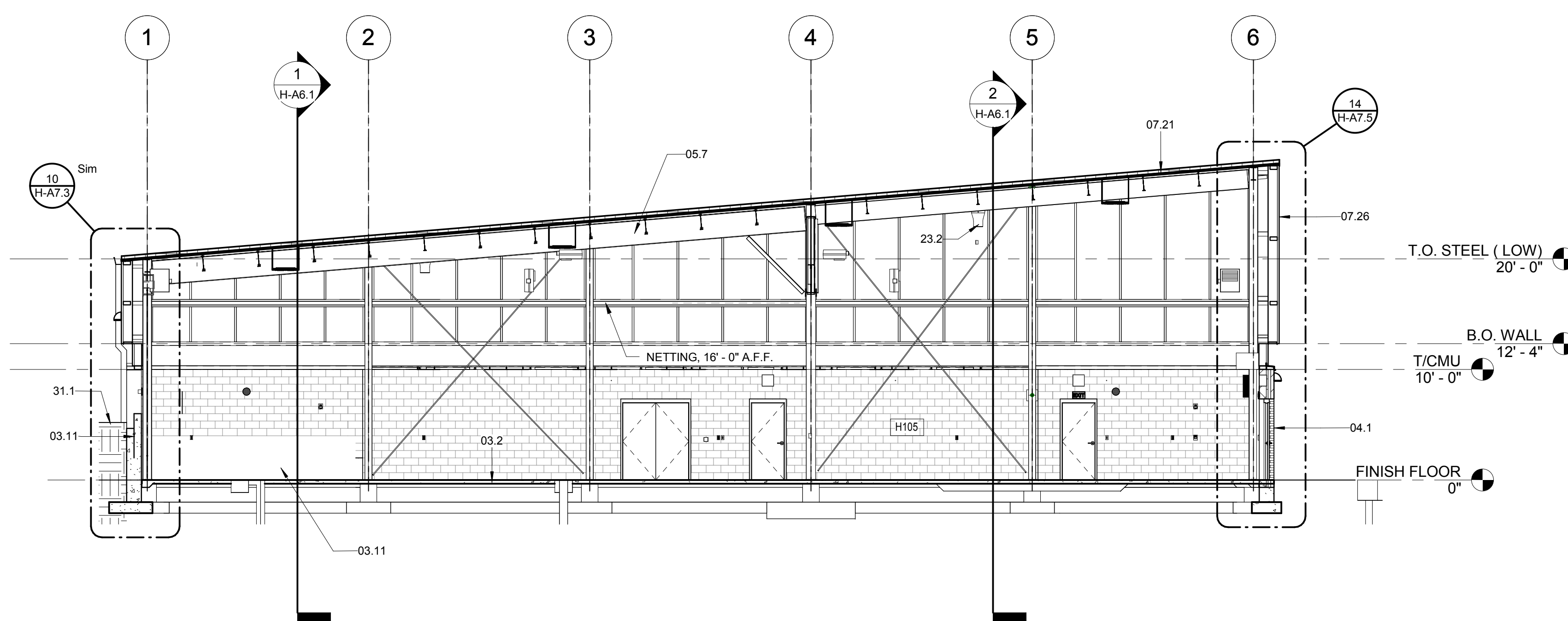
5 BUILDING SECTION
H-A1.1 SCALE: 1/8" = 1'-0"



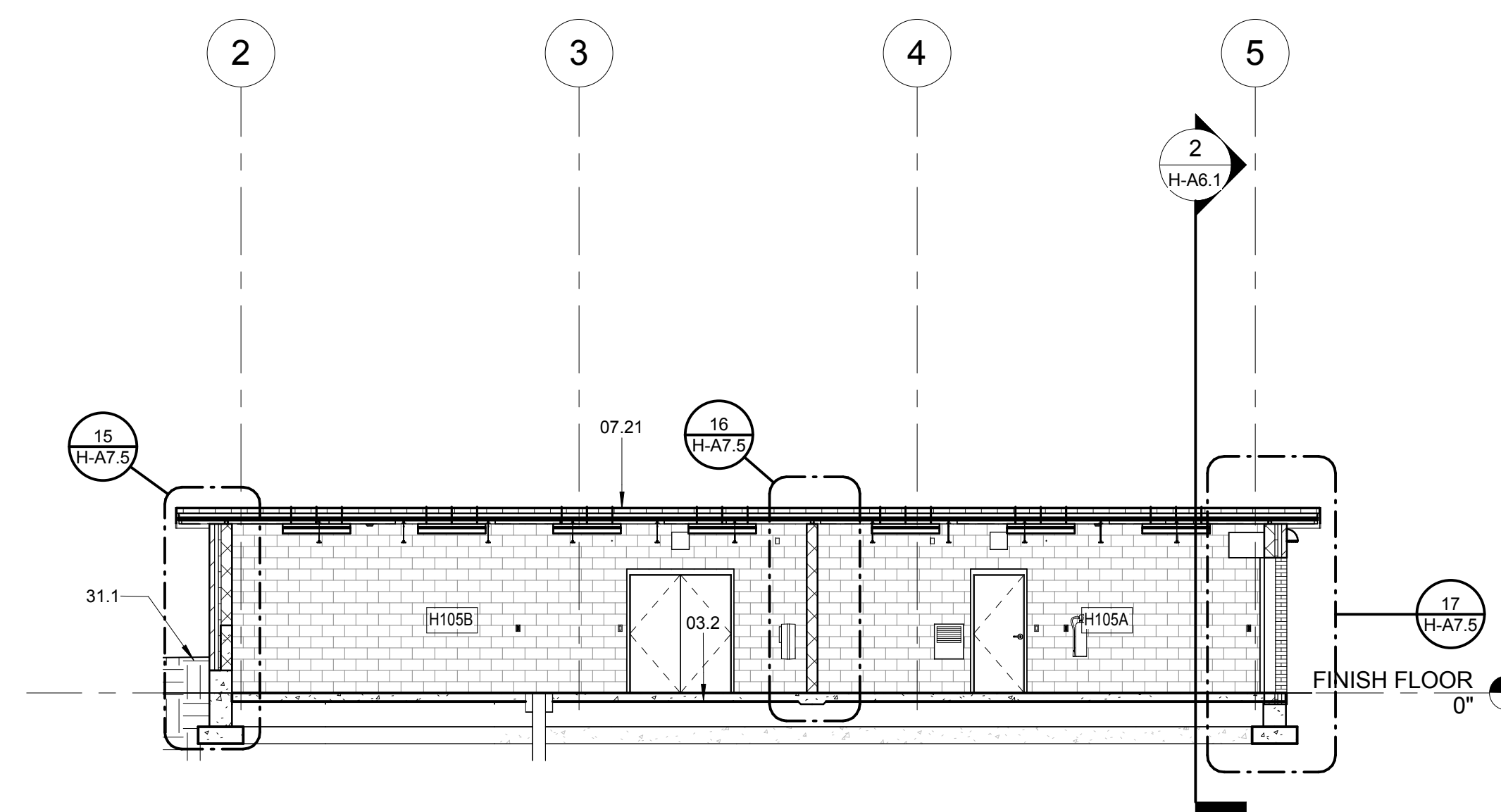
6 BUILDING SECTION
H-A1.1 SCALE: 1/8" = 1'-0"



7 BUILDING SECTION
H-A1.1 SCALE: 1/8" = 1'-0"



8 BUILDING SECTION
H-A1.1 SCALE: 1/8" = 1'-0"



9 BUILDING SECTION
H-A1.1 SCALE: 1/8" = 1'-0"

[smart design] Lockett & Farley
737 South Third Street, Louisville, Kentucky 40202-2100
502.585.4181 502.587.0484 Fax www.lockettandfarley.com
Master Planning | Architecture | Interiors | Engineering | Historic Design
Design-Build | Building Commissioning | Special Inspections

University of Kentucky
Renovate/Upgrade Softball Complex
PROJECT NUMBER: 2338.0
SOUTH CAMPUS
ALUMNDR COLLEGE WAY
LEXINGTON, KENTUCKY

REVISIONS

#	Description	Date

2012.030.00

MADE BY: NWF	CHECKED:
DATE: 2/14/13	

HITTING PAVILION BUILDING SECTIONS