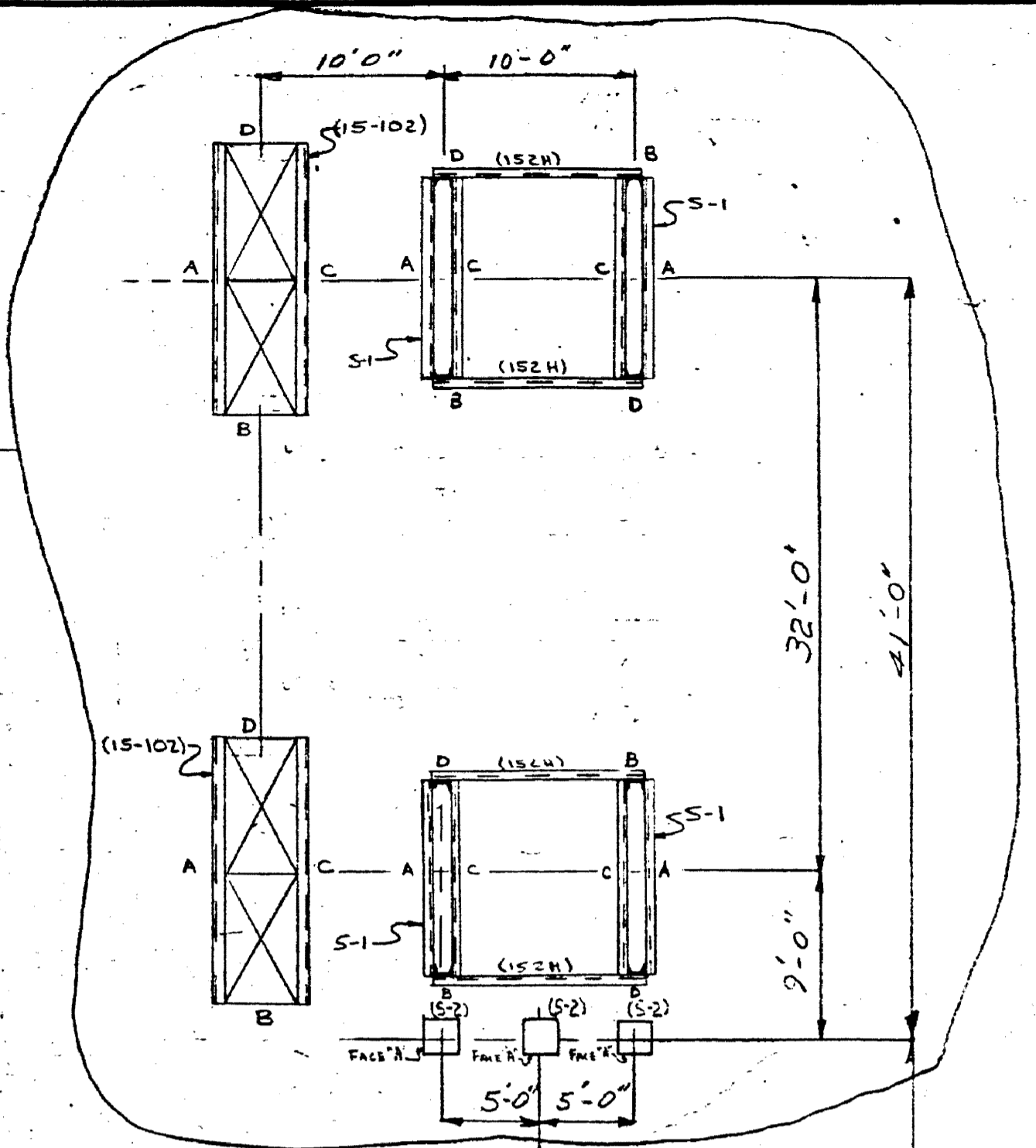
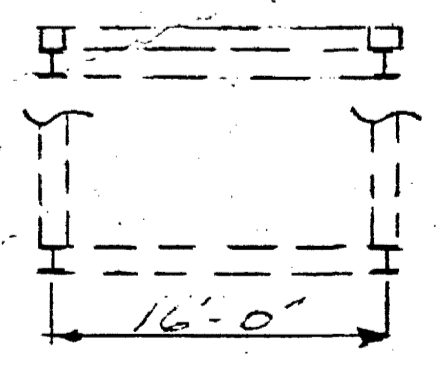
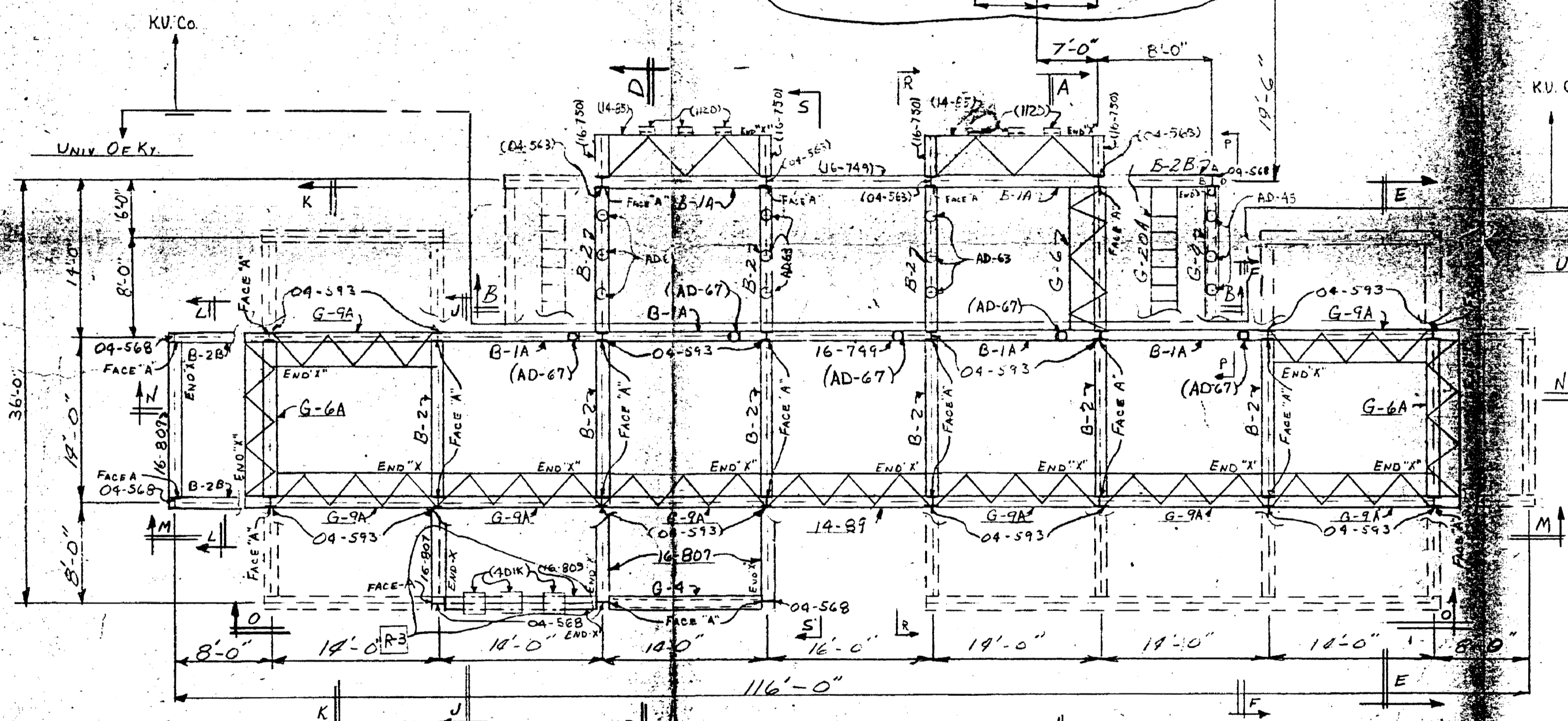


R-4
SEE SHEET 7 FOR COMPLETE PLAN OF
69 KV STRUCTURES



ARROW DOES NOT NECESSARILY INDICATE NORTH, BUT IS AN ORIENTATION MARK FOR THE ANCHOR BOLT PLAN AND STATION LAYOUT.



PLAN

REF DWGS (J.O.01552) (UNIVERSITY OF KENTUCKY)
 STEEL BIM 28070028
 ANC. BOLT PLAN D-108752 SH-2
 STATION LAYOUT D-108747
 GENERAL BIM SBM-3399

REF DWGS (J.O.03659) (UNIVERSITY OF KENTUCKY)
 STEEL B/M --- 28010025
 MATERIAL LIST --- SBM-3445

REF DWGS (J.O.17032)
 STEEL B/M - 28050133
 MATERIAL LIST - SBM-3677

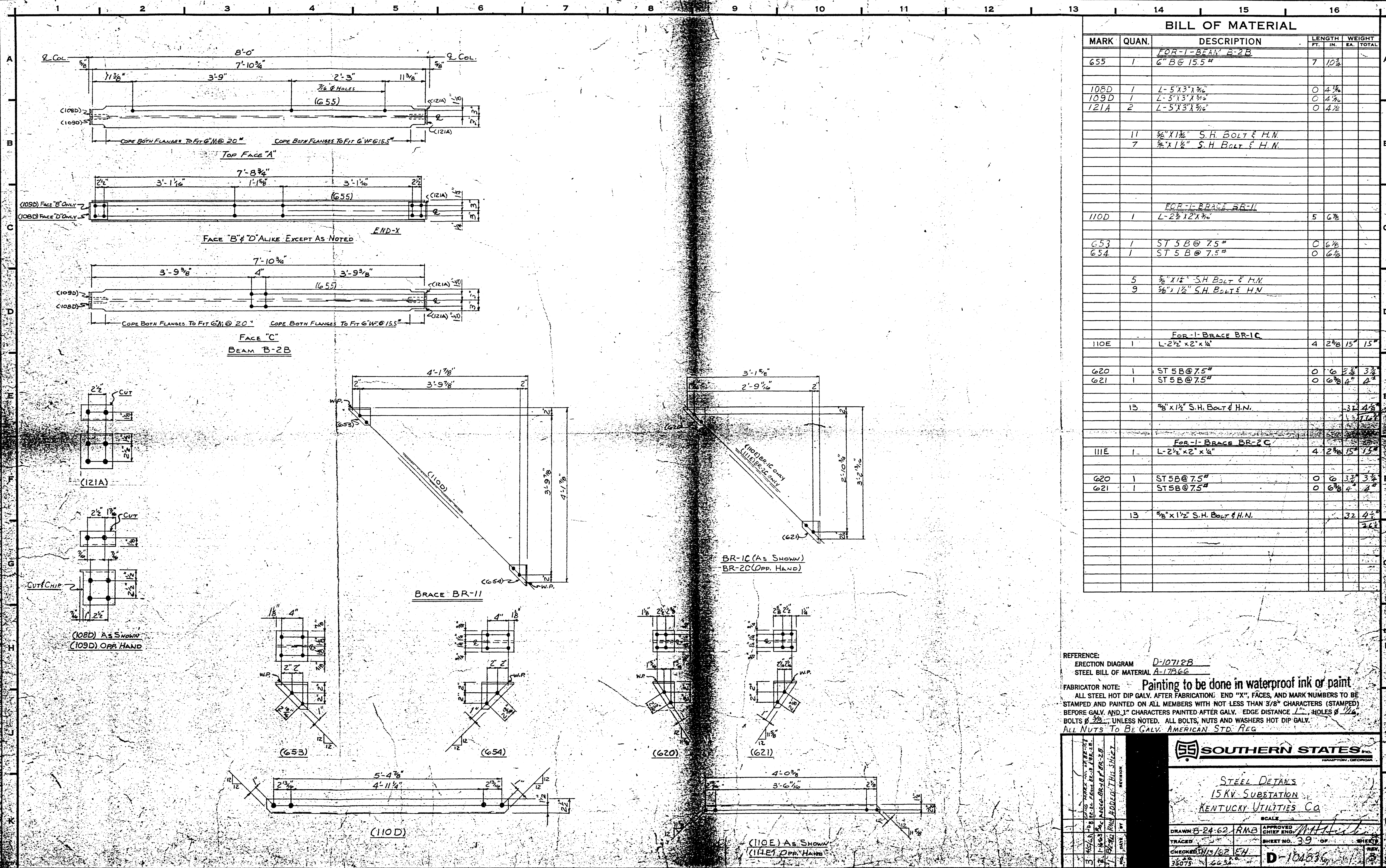
NOTE:
 1 DASHED LINES INDICATE FUTURE STRUCTURES

REF DWGS (J.O.00106) (KENTUCKY UTILITIES CO.)
 STEEL B/M --- 28070022
 ANC. BOLT PLAN --- D-108752 SH-1
 STATION LAYOUT --- D-108747
 GENERAL B/M --- SBM-3380

4-16-68 APPROVED MATERIAL FOR J.O.17032 AND/OR MATERIAL FOR J.O.01552 3-15-66 TMS 2-17-66 ALF 1-17-66 ALF SEE INVO. EAS		REVISION NO. DATE BY
SOUTHERN STATES INC. WASHINGTON, GEORGIA		
ERECT DIAGRAM UNIV. OF KY. MEDICAL 67/1309 KV SUB KENTUCKY UTILITIES COMPANY SCALE		
DRAWN D-21-GMD TRACED CHECKED 11-16-55 JN 00106 06667	APPROVED CHIEF ENG. [Signature] SHEET NO. 1 OF 8 SHEETS D-108753 4	01552 19171323 03659 70884208-SD

69-81

20629



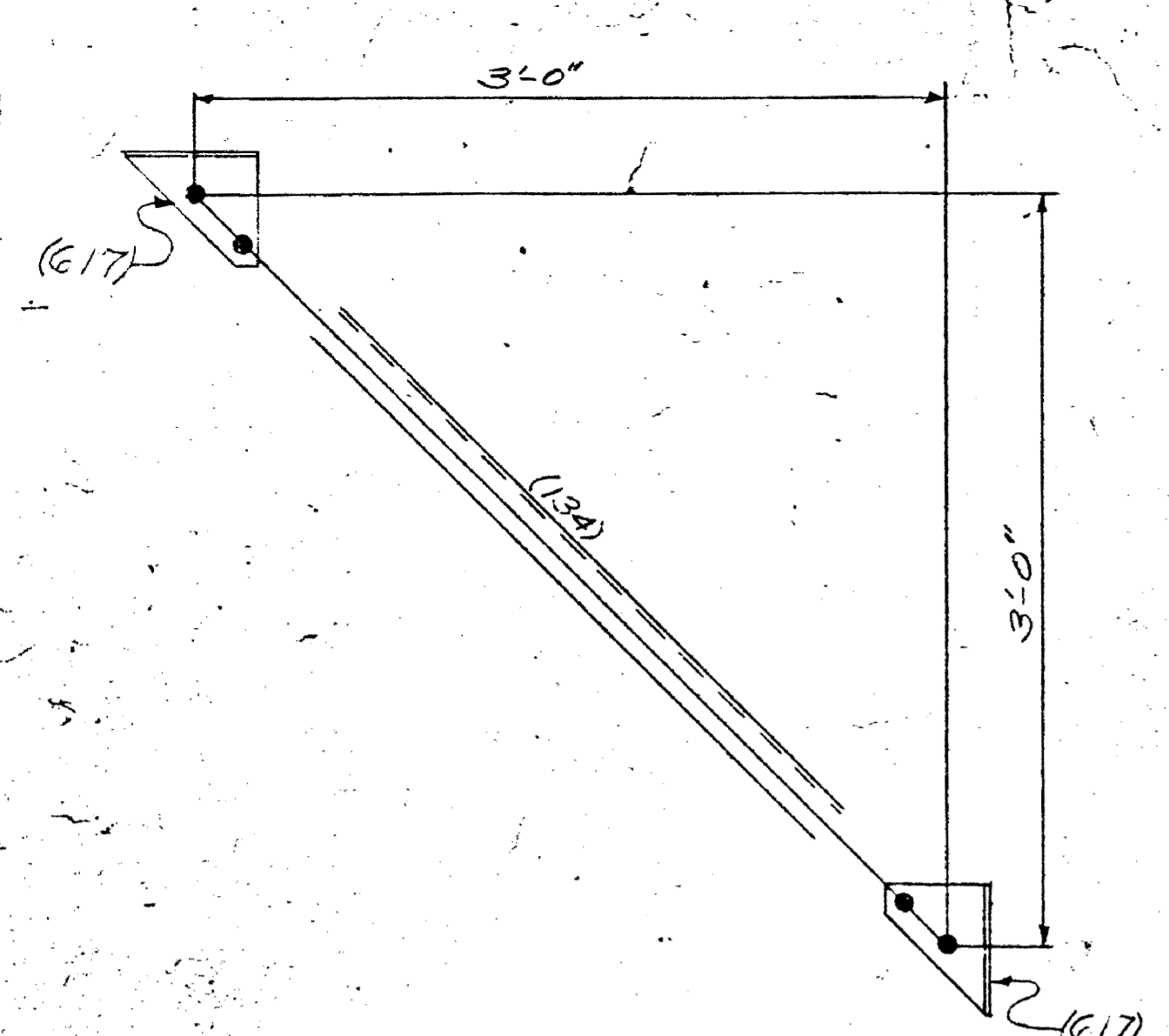
BILL OF MATERIAL				
MARK	QUAN.	DESCRIPTION	LENGTH FT. IN.	WEIGHT EA. TOTAL
FOR-1-BEAM B-2B				
655	1	6" B @ 15.5"	7 10 3/8	
108D	1	L-5X3X3/8	0 4 1/2	
109D	1	L-5X3X3/8	0 4 1/2	
121A	2	L-5X3X3/8	0 4 1/2	
11		5/8" X 1 1/2" S.H. BOLT & H.N.		
7		3/8" X 1 1/2" S.H. BOLT & H.N.		
FOR-1-BRACE BR-11				
110D	1	L-2 1/2 X 2 X 3/8	5 6 3/8	
653	1	ST 5 B @ 7.5"	0 6 1/2	
654	1	ST 5 B @ 7.5"	0 6 1/2	
5		5/8" X 1 1/2" S.H. BOLT & H.N.		
9		3/8" X 1 1/2" S.H. BOLT & H.N.		
FOR-1-BRACE BR-1C				
110E	1	L-2 1/2 X 2 X 3/8	4 2 3/8 15" 15"	
620	1	ST 5 B @ 7.5"	0 6 3/8 3 3/8	
621	1	ST 5 B @ 7.5"	0 6 3/8 4" 4"	
13		5/8" X 1 1/2" S.H. BOLT & H.N.		32 4 1/2
FOR-1-BRACE BR-2C				
111E	1	L-2 1/2 X 2 X 3/8	4 2 3/8 15" 15"	
620	1	ST 5 B @ 7.5"	0 6 3/8 3 3/8	
621	1	ST 5 B @ 7.5"	0 6 3/8 4" 4"	
13		5/8" X 1 1/2" S.H. BOLT & H.N.		32 4 1/2

REFERENCE:
 ERECTION DIAGRAM D-107128
 STEEL BILL OF MATERIAL A-17866

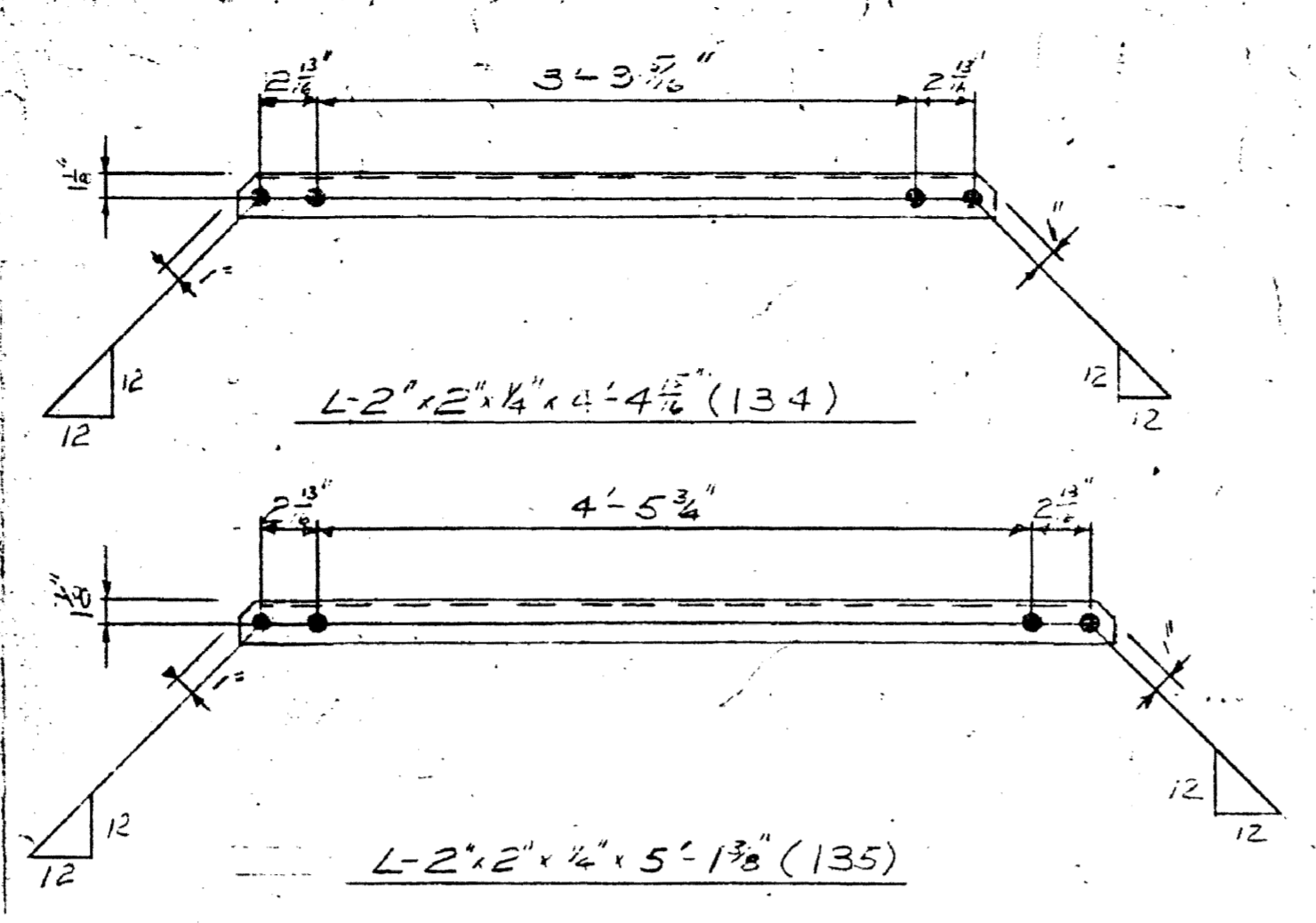
FABRICATOR NOTE:
Painting to be done in waterproof ink or paint
 ALL STEEL HOT DIP GALV. AFTER FABRICATION. END "X", FACES, AND MARK NUMBERS TO BE STAMPED AND PAINTED ON ALL MEMBERS WITH NOT LESS THAN 3/8" CHARACTERS (STAMPED) BEFORE GALV. AND 1" CHARACTERS PAINTED AFTER GALV. EDGE DISTANCE L. HOLES 1/16". BOLTS 3/8". UNLESS NOTED. ALL BOLTS, NUTS AND WASHERS HOT DIP GALV.
 ALL NUTS TO BE GALV. AMERICAN STD. REG.

STEEL DETAILS 15 KV. SUBSTATION KENTUCKY UTILITIES CO.	
DRAWN: B-24-62 RMB TRACED: [] CHECKED: [] DATE: []	APPROVED CHIEF ENG: [] SHEET NO. 39 OF [] SCALE: [] D-104836

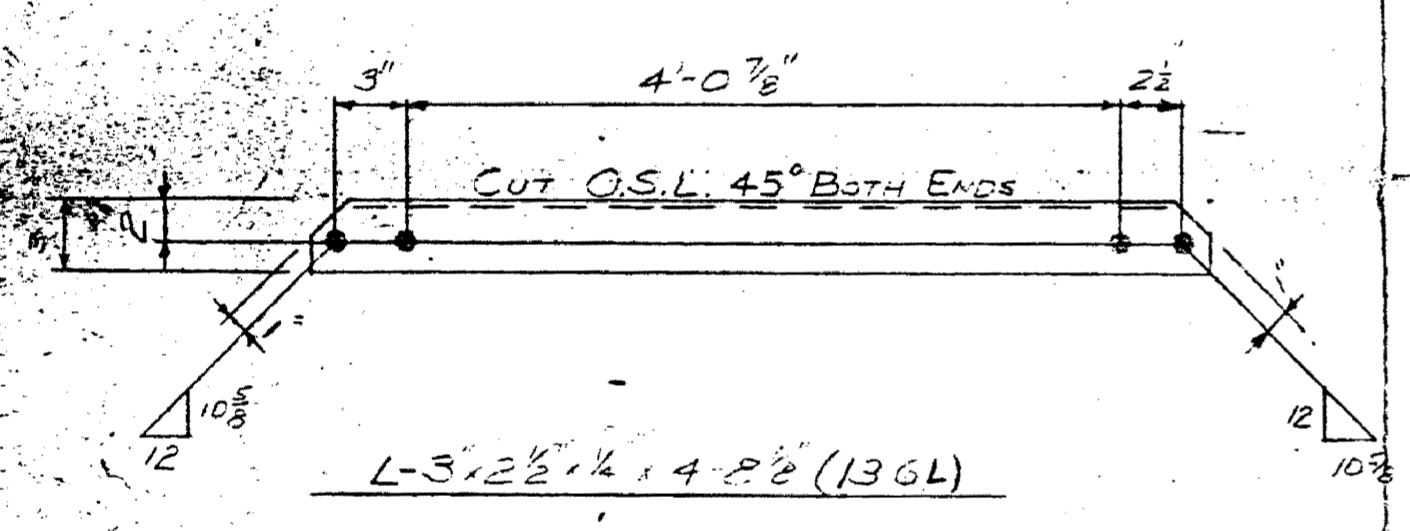
630
 020630
 Document #



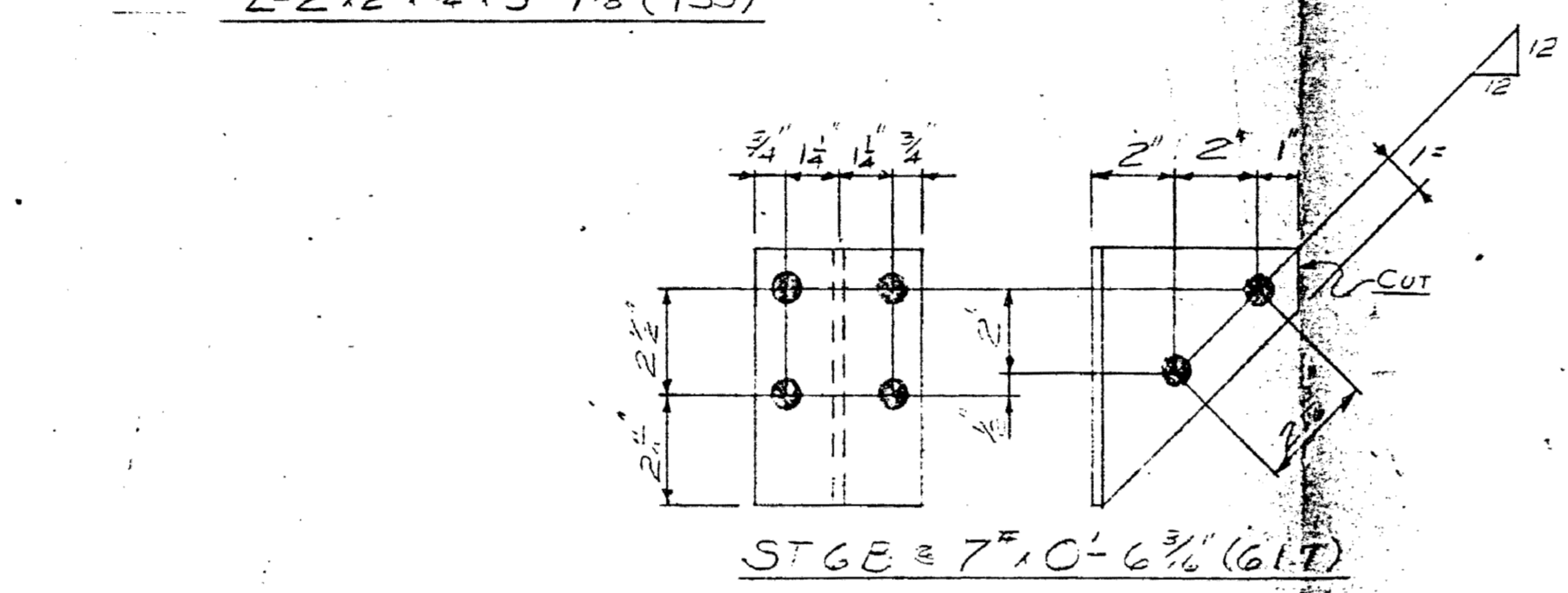
BRACE BR-4



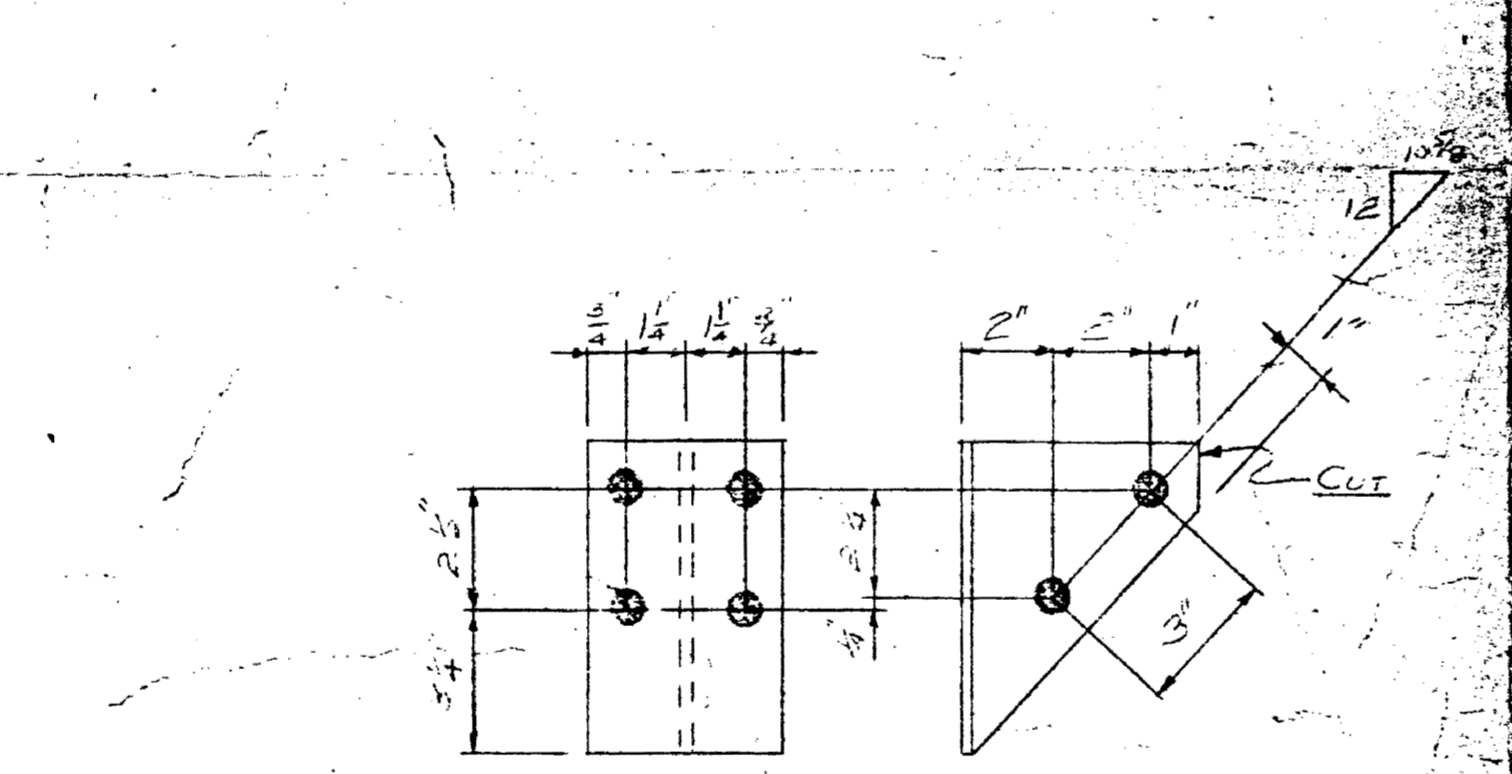
BRACE BR-5



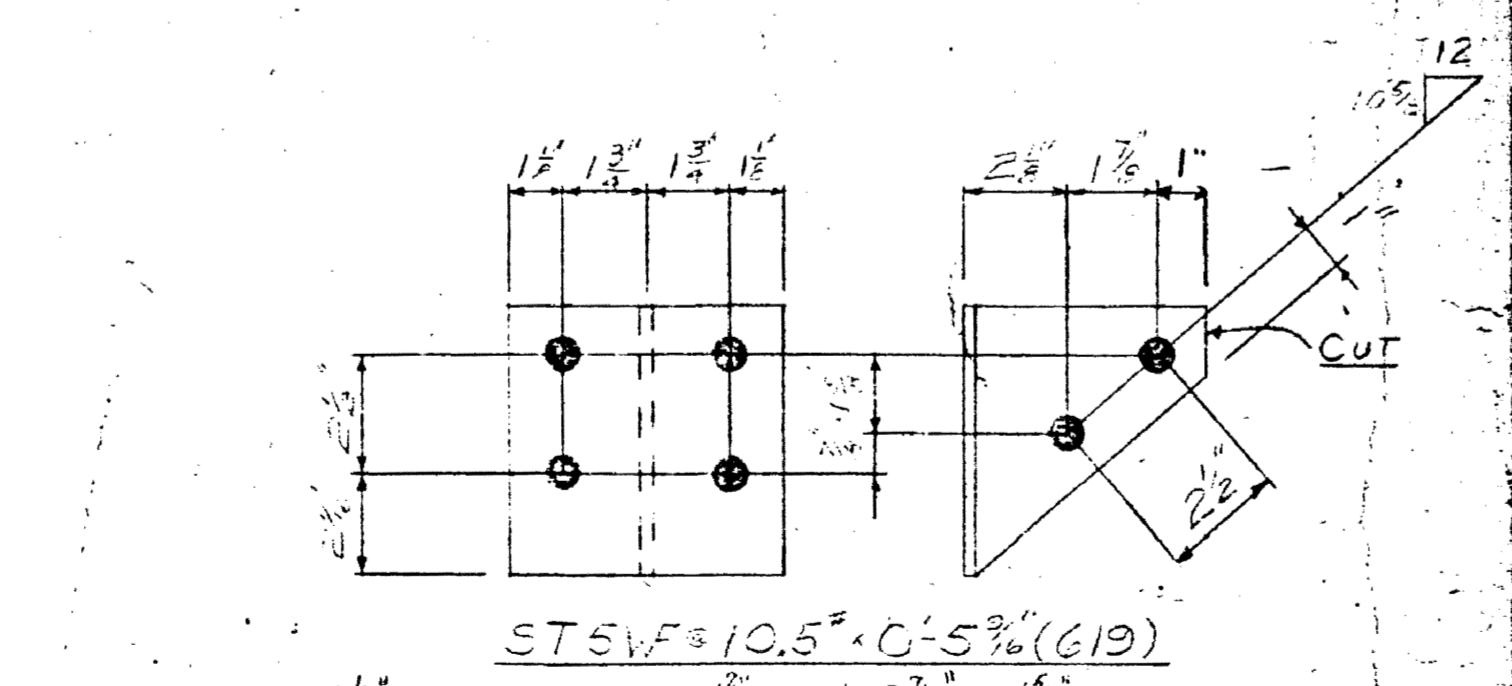
BRACE BR-9



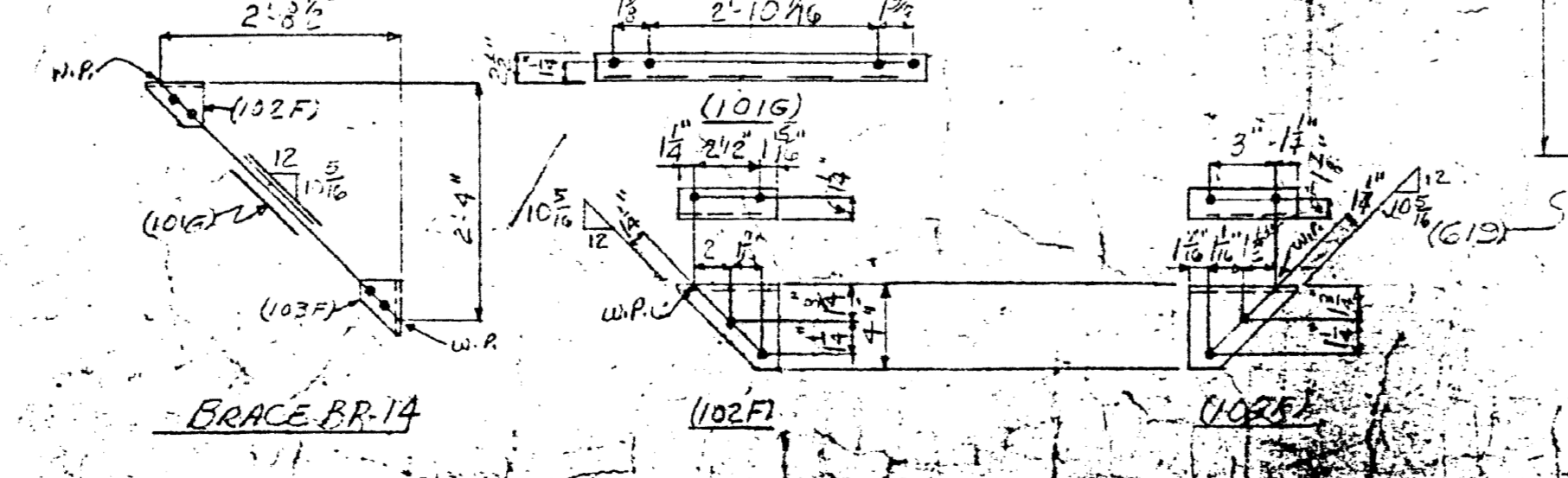
ST6B 7" C-6 3/4" (617)



ST6B 7" C-6 3/4" (618)



BRACE BR-10

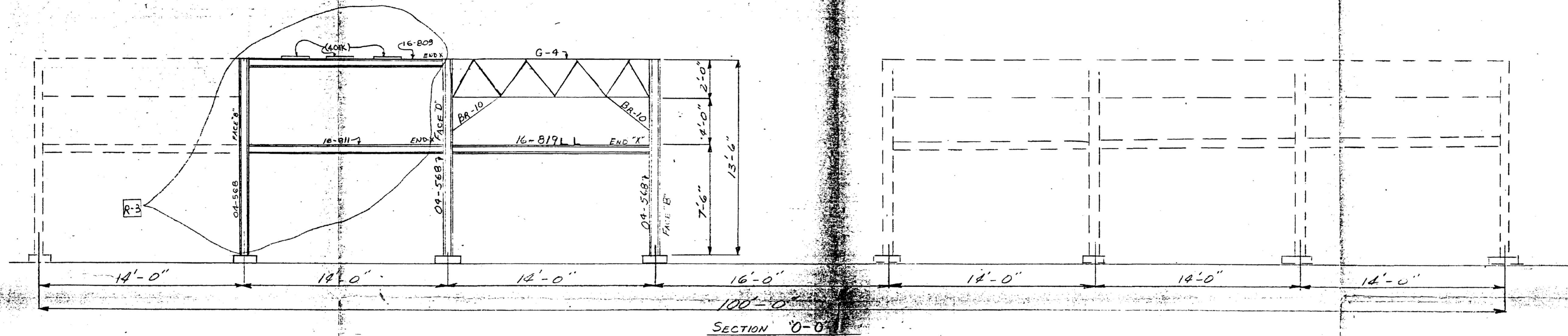


BRACE BR-14

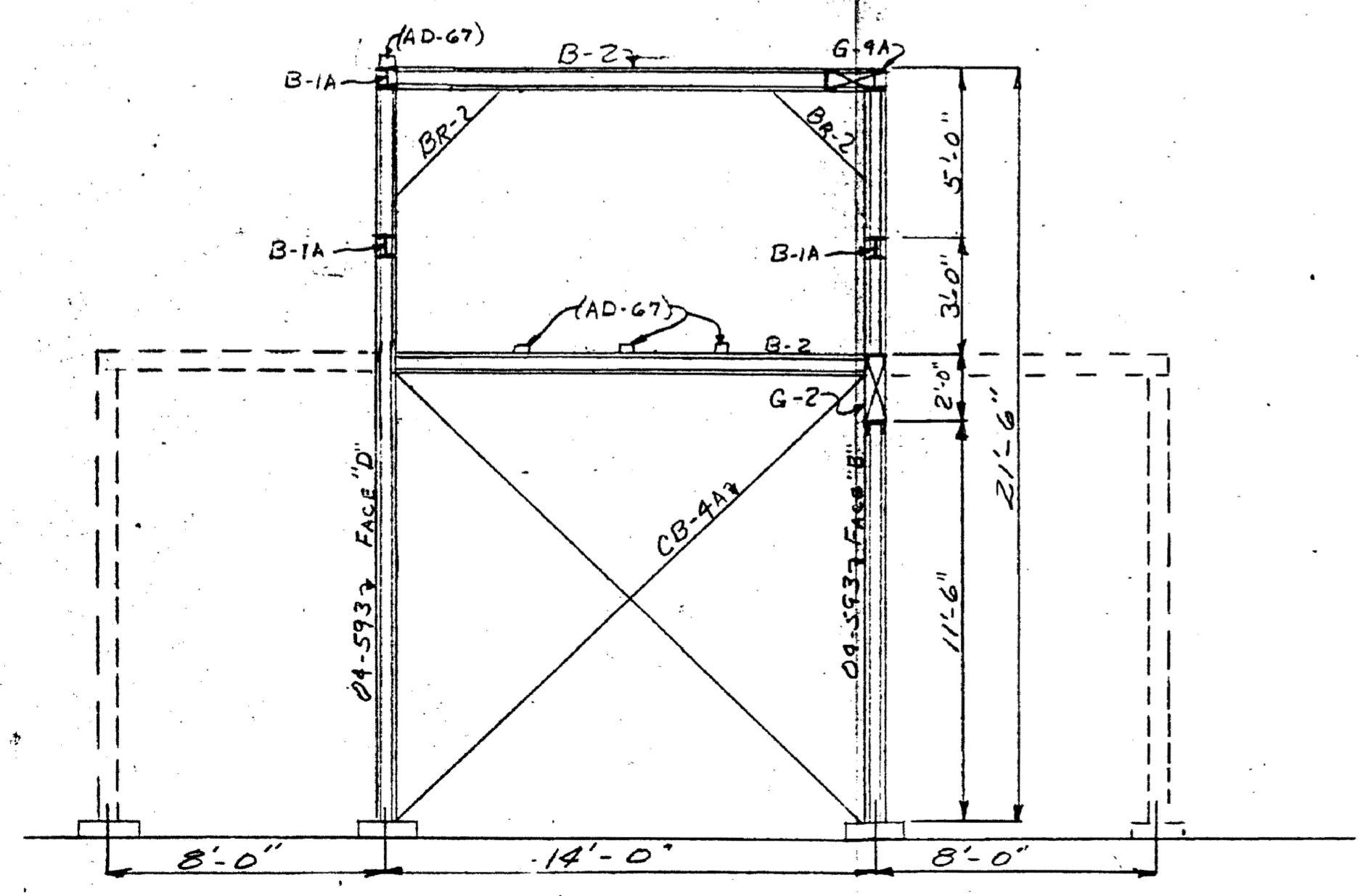
BILL OF MATERIAL					
MARK	QUAN.	DESCRIPTION	LENGTH	WEIGHT	REMARKS
		FOR BRACE BR-4			
134	1	L-2"x2"x4"	4' 4 1/2"	14	14
617	2	ST6B 7"	0' 6 3/4"	4	8
		FOR BRACE BR-5			
135	1	L-2"x2"x4"	5' 1 3/8"	16	16
617	2	ST6B 7"	0' 6 3/4"	4	8
		FOR BRACE BR-9			
136L	1	L-3"x2"x4"	4' 8 3/8"	21	21
618	1	ST6B 7"	0' 6 3/4"	4	4
619	1	ST5WF 10.5"	0' 5 3/8"	5	5
		FOR BRACE BR-10			
137C	1	L-3"x2"x4"	4' 8 3/8"	21	21
618	1	ST6B 7"	0' 6 3/4"	4	4
619	1	ST5WF 10.5"	0' 5 3/8"	5	5
		FOR BRACE BR-14			
101G	1	L-2"x2"x4"	3'	10	
137F	1	L-4"x3"x3"	0'	5 1/2	
103F	1	L-4"x3"x3"	0'	5 1/4	
		FOR BRACE BR-14			
		FOR BRACE BR-14			
		FOR BRACE BR-14			

REMARKS: END OF BRACE AND MARK NUMBERS TO BE STAMPED & PAINTED ON ALL MEMBERS NOT LESS THAN 1/4" FROM END OF MEMBER.

		SOUTHERN STATES EQUIPMENT CORP. HAMPTON, GA.			
STEEL DETAILS 15 KV SUBSTATION KENTON UTILITIES CO.					
SCALE: _____ APPROVED CHIEF ENG. _____ TRACED _____ CHECKED: J.D.-G.P. CEW SHEET NO. 14 OF 15 SHEETS D-104836 4					



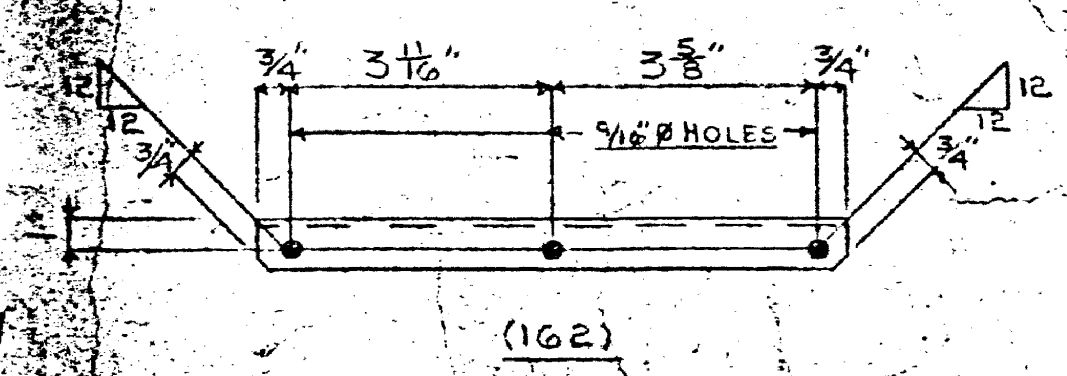
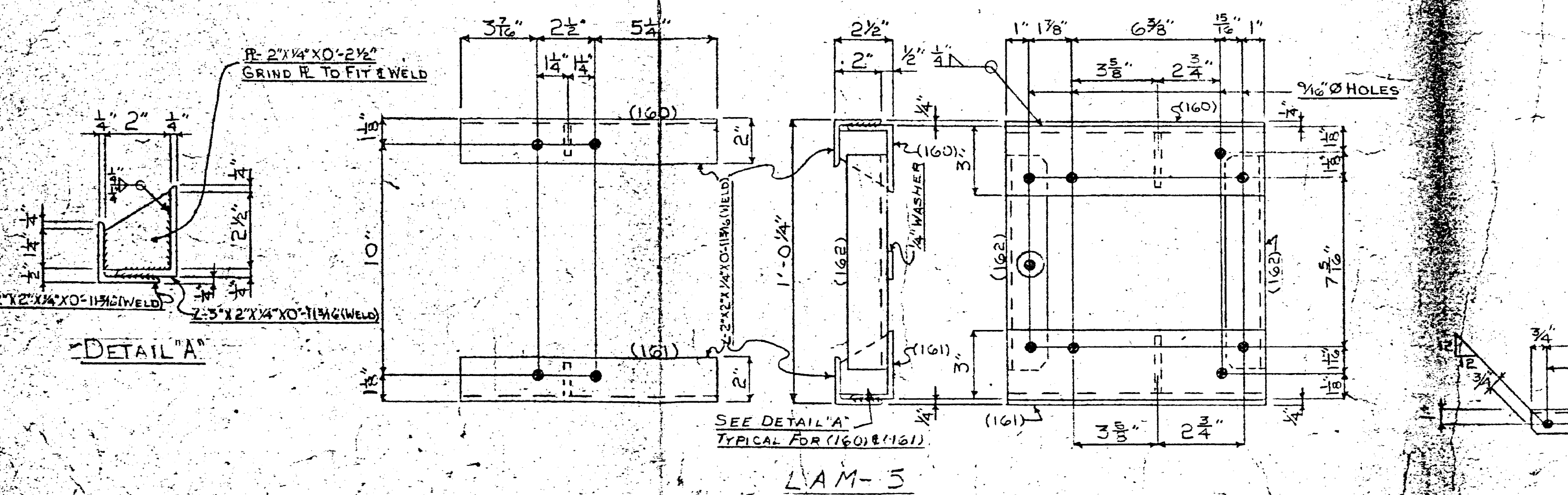
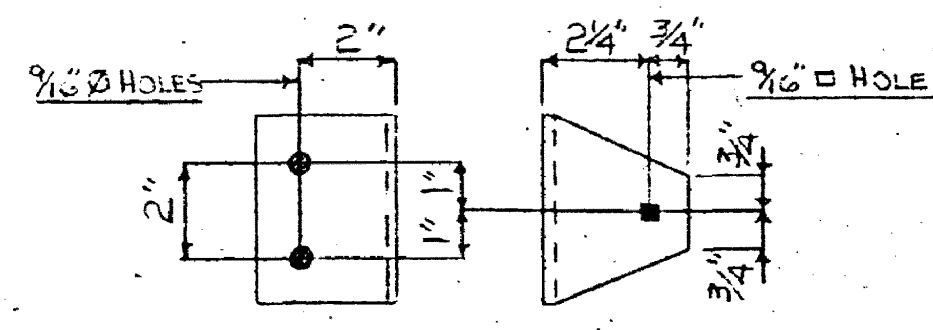
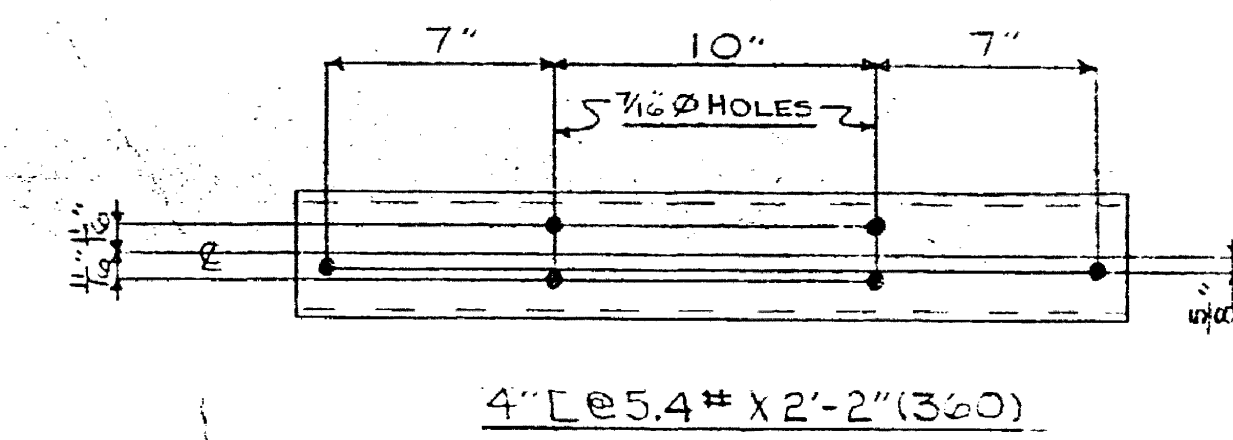
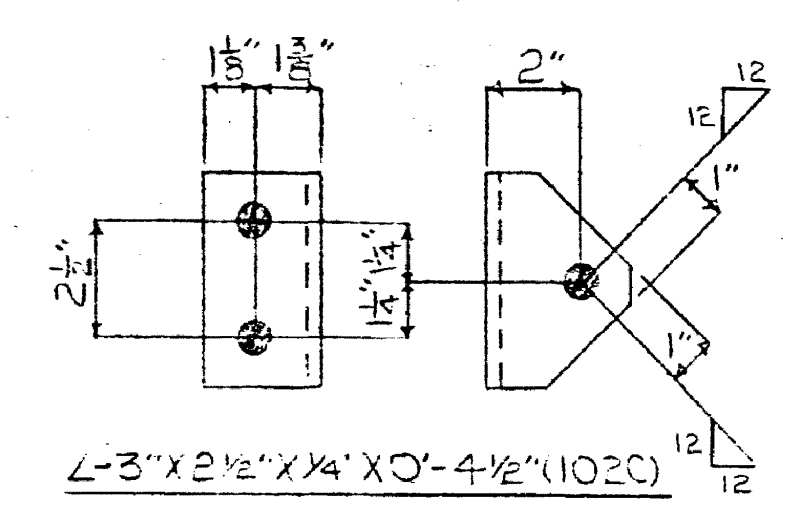
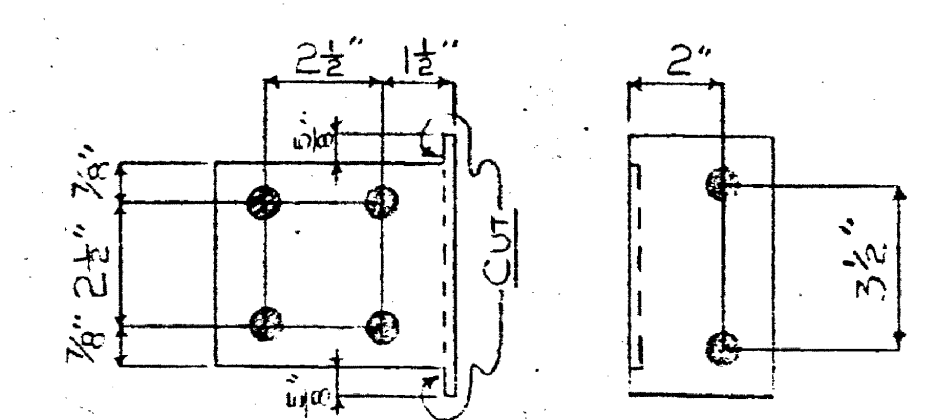
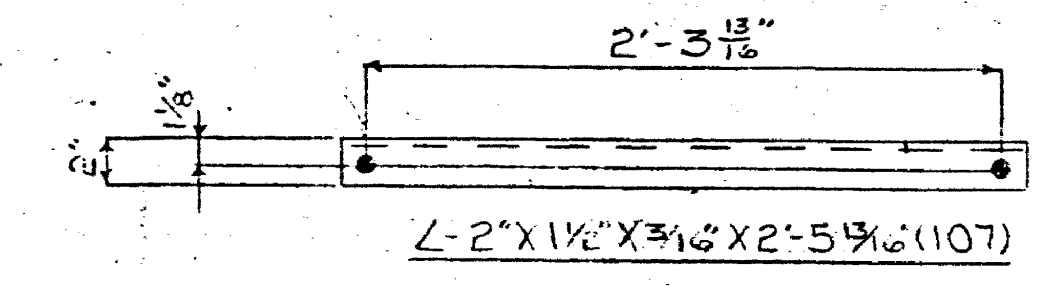
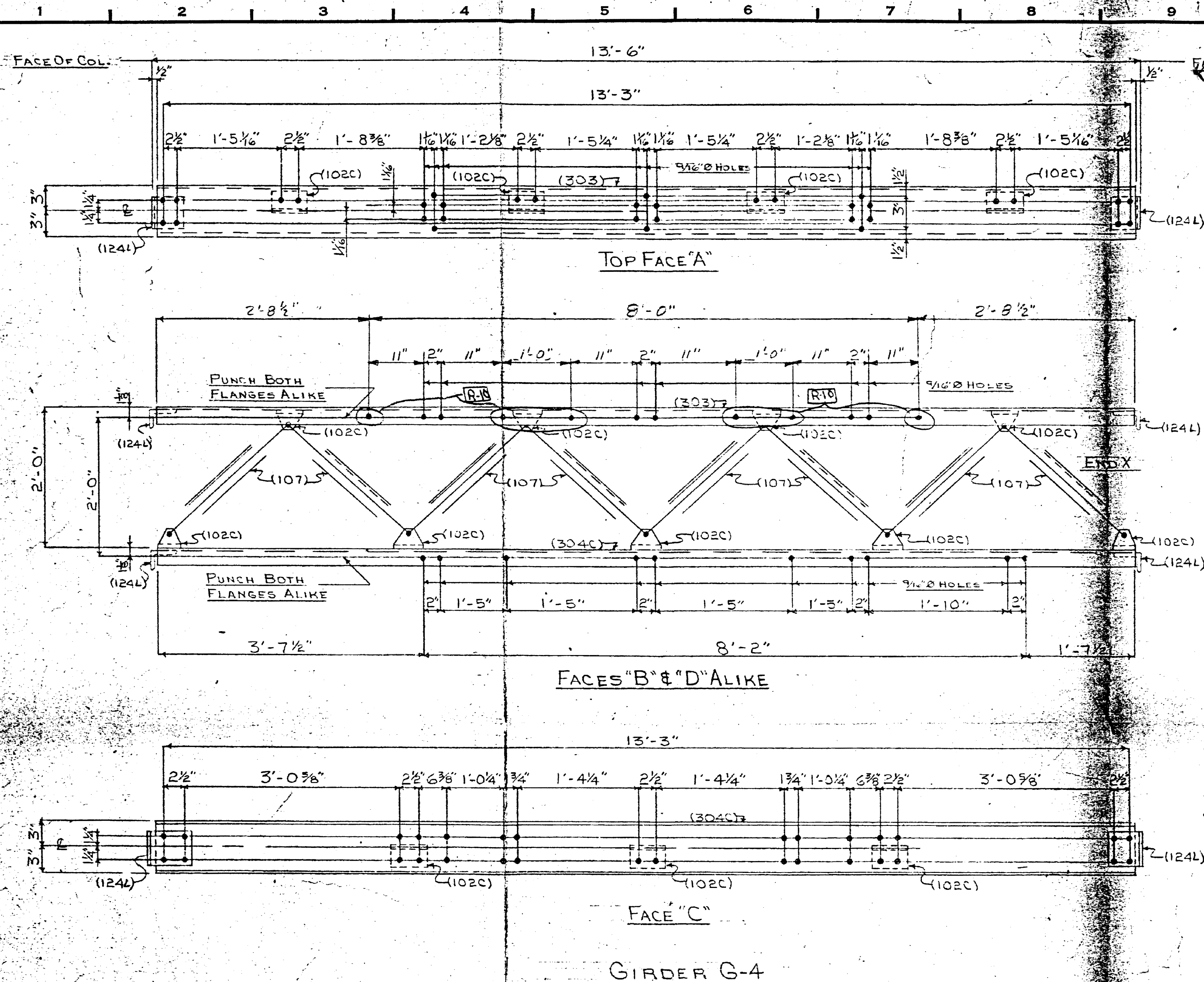
SECTION 0-0



SECTION F-F

SOUTHERN STATES <small>INCORPORATED IN GEORGIA</small>	
<p align="center"><u>ERECT DIAGRAM</u> UNIV. OF KY MEDICAL CTR/13.09KV SUB KENTUCKY UTILITIES COMPANY</p>	
<p align="right">SCALE</p>	
DRAWN/D-27-GS/GMD TRACED CHECKED 11-1-65 JN 05106 06667	APPROVED CHIEF ENG. <i>[Signature]</i> SHEET NO. 4 OF 8 SHEETS REV. 3 D-108753
14 01552 05459	15 1417 7088-4208-50

33
 Document # 020633
 Cab # B-1
 64



BILL OF MATERIAL					
MARK	QUAN.	DESCRIPTION	LENGTH		WEIGHT
			FT.	IN.	
FOR 1 GIRDER G-4					
303	1	6" C @ 8.2 #	13	5	110 110
304C	1	6" C @ 8.2 #	13	5	110 110
102C	9	L-3" X 2 1/2" X 1/4"	0	4 1/2	2 18
124L	4	L-5" X 3" X 1/4"	0	5 1/2	3 12
107	8	L-2" X 1 1/2" X 3/16"	2	5 3/4	5 40
33		5/8" X 1 1/4" GALV. S.H. BOLT & H.N.			
22		5/8" X 1 1/2" GALV. S.H. BOLT & H.N.			
FOR 1 LIGHTING ARRESTER MTG. LAM-5					
160	1	L-3" X 2" X 1/4" WITH 1 L-2" X 2" X 1/4" X 0'-11 3/16" @ 1 R-2" X 1/4" X 0'-2 1/2" (WELD)	0	11 3/16	8 8
161	1	L-3" X 2" X 1/4" WITH 1 L-2" X 2" X 1/4" X 0'-11 3/16" @ 1 R-2" X 1/4" X 0'-2 1/2" (WELD)	0	11 3/16	8 8
162	2	L-1 3/4" X 1 3/4" X 3/16"	0	6 3/4	1 2
5		1/2" X 1 1/4" S.H. BOLT & H.N.			
5		5/8" X 1 1/4" S.H. BOLT & H.N.			
2		1/4" X 1 1/4" RD. FLAT CUT WASHER FOR 1/2" BOLT			

REFERENCE:
ERECTOR DIAGRAM _____
STEEL BILL OF MATERIAL _____

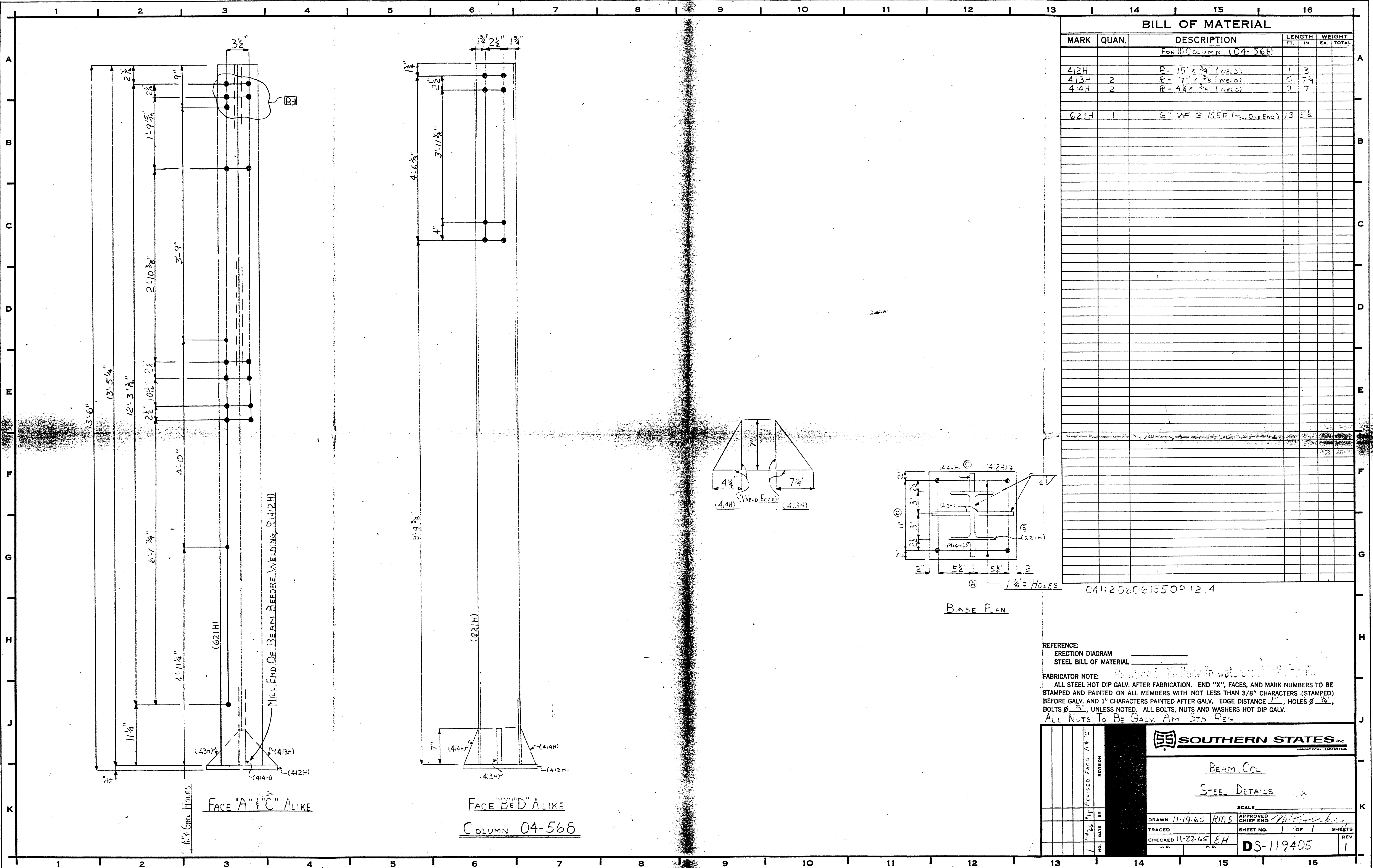
FABRICATOR NOTE:
Painting to be done in water proof oil or paint.
ALL STEEL HOT DIP GALV. AFTER FABRICATION. END "X", FACES, AND MARK NUMBERS TO BE STAMPED AND PAINTED ON ALL MEMBERS WITH NOT LESS THAN 3/8" CHARACTERS (STAMPED) BEFORE GALV. AND 1" CHARACTERS PAINTED AFTER GALV. EDGE DISTANCE 1", HOLES Ø 1/16", BOLTS Ø 3/8", UNLESS NOTED. ALL BOLTS, NUTS AND WASHERS HOT DIP GALV.
ALL NUTS TO BE GALV. AMERICAN STD. REG.

APPROVED	DATE	BY	REVISION
10/2/64	10/2/64	JLA	1
10/12/64	10/12/64	HJW	2
10/12/64	10/12/64	JLA	3
10/12/64	10/12/64	JLA	4

SOUTHERN STATES
STEEL DETAILS
15 KV. SUBSTATION
KENTUCKY UTILITIES CO.

SCALE: _____

DRAWN 10-18-57 GRC APPROVED CHIEF ENGR. _____
TRACED 5-12-64 HJW SHEET NO. 2 OF _____ SHEETS
CHECKED 10-29-57 JLA
D-104836



BILL OF MATERIAL							
MARK	QUAN.	DESCRIPTION	LENGTH		WEIGHT		
			FT.	IN.	EA.	TOTAL	
For Column (04-568)							
412H	1	P-15" X 3/4" (WELD)	1		3		
413H	2	P-7" X 3/8" (WELD)	0		7 1/2		
414H	2	P-4 1/2" X 3/8" (WELD)	0		7		
621H	1	6" WF @ 15.5# (from other end)	13		5 1/2		

REFERENCE:
ERECTION DIAGRAM _____
STEEL BILL OF MATERIAL _____

FABRICATOR NOTE:
ALL STEEL HOT DIP GALV. AFTER FABRICATION. END "X", FACES, AND MARK NUMBERS TO BE STAMPED AND PAINTED ON ALL MEMBERS WITH NOT LESS THAN 3/8" CHARACTERS (STAMPED) BEFORE GALV. AND 1" CHARACTERS PAINTED AFTER GALV. EDGE DISTANCE 1", HOLES Ø 1/8", BOLTS Ø 5/8", UNLESS NOTED. ALL BOLTS, NUTS AND WASHERS HOT DIP GALV.
ALL NUTS TO BE GALV. AM. STD. REG.

BEAM COL STEEL DETAILS	
SCALE _____	
DRAWN 11-19-65 RIMS TRACED _____ CHECKED 11-22-65 EH	APPROVED CHIEF ENG. _____ SHEET NO. 1 OF 1 SHEETS DS-119405 REV. 1