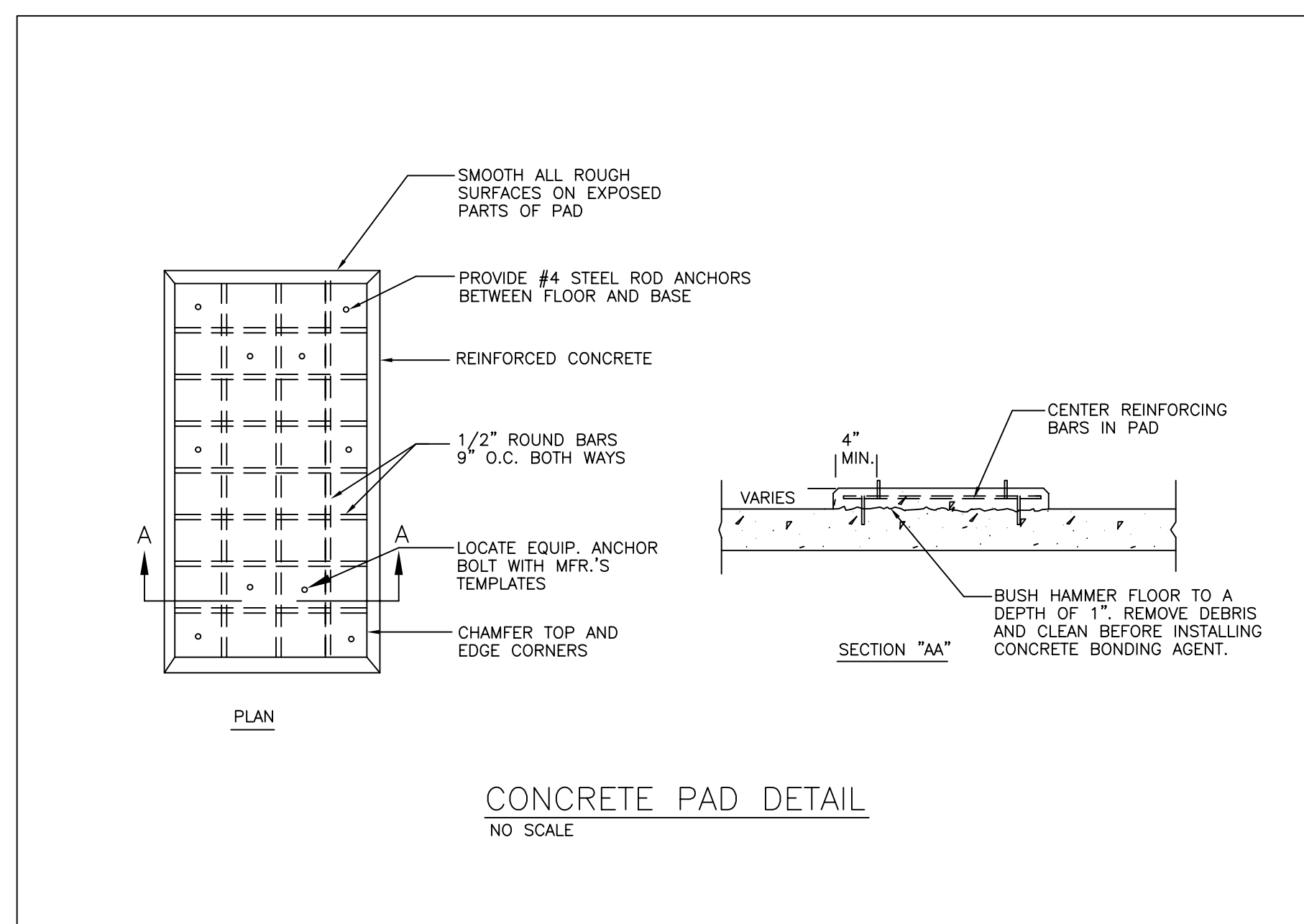


**ELECTRICAL PLAN – HEATING AND COOLING PLANT – FIRST FLOOR**

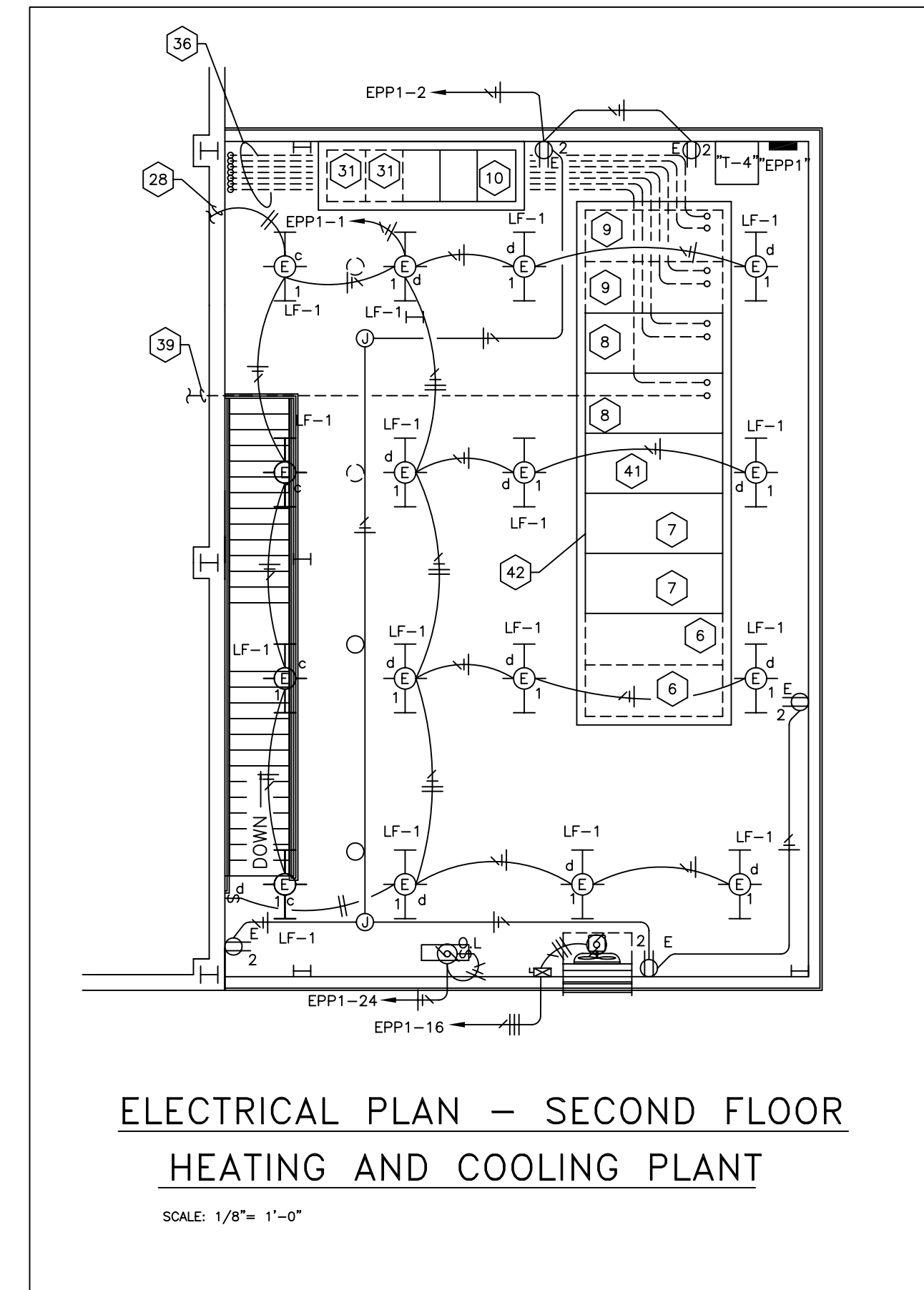
SCALE: 1/8" = 1'-0"



**CONCRETE PAD DETAIL**  
NO SCALE

**CODED NOTES:**

- 1 4160 VOLT PRIMARY GENERAL ELECTRIC SWITCHGEAR IN H&C BASEMENT.
- 2 RELATIVE LOCATION OF ELECTRICAL ROOM IN H&C BASEMENT.
- 3 DROP DOWN WALL INTO ELECTRIC ROOM BELOW.
- 4 EXISTING EXIT LIGHT TO BE REMOVED.
- 5 NEW 24"x24"x6" PULL BOX.
- 6 FUTURE INCOMING PARALLELING SWITCHGEAR SECTION.
- 7 FUTURE DISTRIBUTION SECTION OF PARALLELING SWITCHGEAR.
- 8 DISTRIBUTION SECTION OF PARALLELING SWITCHGEAR.
- 9 FUTURE DISTRIBUTION SECTION OF PARALLELING SWITCHGEAR.
- 10 CONTROLS SECTION OF PARALLELING SWITCHGEAR.
- 11 4160 VOLT FEED FROM GENERATOR TO PARALLELING SWITCHGEAR.
- 12 EMERGENCY PANEL "EPP2" IN PUMP ROOM (FEED FROM T-5). OWNER SUPPLIED CONTRACTOR INSTALLED.
- 13 OWNER SUPPLIED AND SET. CONTRACTOR INSTALLED 2000 KW, 4160 VOLT EMERGENCY GENERATORS. PROVIDE ALL CONNECTIONS AS REQUIRED.
- 14 FUTURE 2000 KW, 4160 VOLT EMERGENCY GENERATORS.
- 15 EXISTING MOTOR CONTROL CENTER MCC-4. CONTRACTOR TO PROVIDE NEW 3-POLE 100 AMP FUSED DISCONNECT TO FEED NEW EMERGENCY POWER PANEL EPP1. CONTRACTOR TO PROVIDE NEW 3-POLE 30 AMP FUSED DISCONNECT TO FEED NEW EMERGENCY POWER PANEL EPP2.
- 16 EXISTING MANUAL TRANSFER SWITCH #1 TO TRANSFER FROM GENERATOR #1 TO GENERATOR #2.
- 17 EXISTING 1000 KW 4160 VOLT SWITCHGEAR.
- 18 EXISTING MANUAL TRANSFER SWITCH #2 TO TRANSFER FROM GENERATOR #1 TO GENERATOR #2.
- 19 EXISTING AUTOMATIC TRANSFER SWITCH #2 FOR GENERATOR #2.
- 20 EXISTING AUTOMATIC TRANSFER SWITCH #1 FOR GENERATOR #1.
- 21 OWNER SUPPLIED, CONTRACTOR INSTALLED 480 VOLT PRIMARY, 120/208VOLT SECONDARY 7.5 KVA TRANSFORMER T-5.
- 22 UP TO NEW TRANSFORMER T-4 ON UPPER LEVEL.
- 23 TRICKLE DOWN BATTERY CHARGER MOUNT ON ANGLE IRON FRAME.
- 24 DAY TANK PUMP-208V. 3/4 HP.
- 25 NEW FUEL PUMP- 208 VOLT 1/2, 1/2 HP.
- 26 EXISTING LIGHT TO BE REMOVED.
- 27 LIGHT SWITCH UP TO FIXTURES ABOVE.
- 28 DOWN TO LIGHTSWITCH ON 1ST LEVEL. (SEE CODED NOTE 27).
- 29 BLOCK HEATERS: TWO 208 VOLT, 3 KW PER GENERATOR.
- 30 UP FROM GENERATOR SET TO ENTER PARALLELING GEAR FROM UNDERNEATH. COORDINATE EXACT LOCATION W/ PARALLELING GEAR AND SHOP DRAWINGS. (SEE CODED NOTE 7).
- 31 FUTURE CONTROL SECTIONS.
- 32 NEW CONTROL WIRING FROM EXISTING AUTOMATIC TRANSFER SWITCHES IN 1" CONDUIT. CONTRACTOR TO FIELD VERIFY EXISTING CONDITIONS TO DETERMINE ACTUAL ROUTING. INSTALL PER MANUFACTURER'S REQUIREMENTS. ROUTE CONDUIT TO CONTROL SECTION OF PARALLELING GEAR (SEE CODED NOTE 10).
- 33 EXISTING PULL BOX.
- 34 EXISTING PULL BANK.
- 35 TWO 2" CONTROL WIRING CONDUITS (ONE BEING SPARE) FROM CCC TO CONTROL CABINET ON SECOND LEVEL. (SEE SITE PLAN SHEET E-2)
- 36 SEVEN 4" RIGID CONDUITS (BELOW FLOOR) FROM DISTRIBUTION SECTIONS OF PARALLELING GEAR DOWN TO SURFACE MOUNTED CABINET BELOW.
- 37 EMERGENCY GENERATOR SUPPLIED BY OWNER INSTALLED BY THIS CONTRACT.
- 38 OWNER SUPPLIED, CONTRACTOR INSTALLED EMERGENCY DISTRIBUTION PANEL "EP1" AND 4160 VOLT PRIMARY, 480 VOLT SECONDARY 500KVA TRANSFORMER ASSEMBLY. COMPACT DESIGN. (MAXIMUM 36" DEEP).
- 39 SEE CONTINUATION ON OTHER LEVEL.
- 40 INSTALL 4"x4"x12" JUNCTION BOX ON WALL AND TERMINATE CABLES IN BOX. COIL 15' OF CABLE IN BOX AND TERMINATE ENDS WITH 5KV RATED CABLE END CAPS.
- 41 TIE BREAKER SECTION OF PARALLELING SWITCHGEAR.
- 42 OWNER SUPPLIED AND SET PARALLELING GEAR. THE GEAR WILL BE PROVIDED IN FIVE SECTIONS. THIS CONTRACTOR SHALL RECONNECT SECTIONS IN ACCORDANCE WITH RUSSELETRIC INSTALLATIONS INSTRUCTIONS SUPPLIED BY THE OWNER.
- 43 EMERGENCY STOP PUSHBUTTON. PROVIDE WITH PROTECTIVE, HINGED PLASTIC COVER IF NOT SUPPLIED BY GENERATOR MANUFACTURER.
- 44 EMERGENCY GENERATOR REMOTE ANNUNCIATOR PANEL.
- 45 ROUTE 1/2" CONDUIT TO EMERGENCY GENERATOR FOR CONNECTION PER MANUFACTURER'S INSTRUCTIONS.



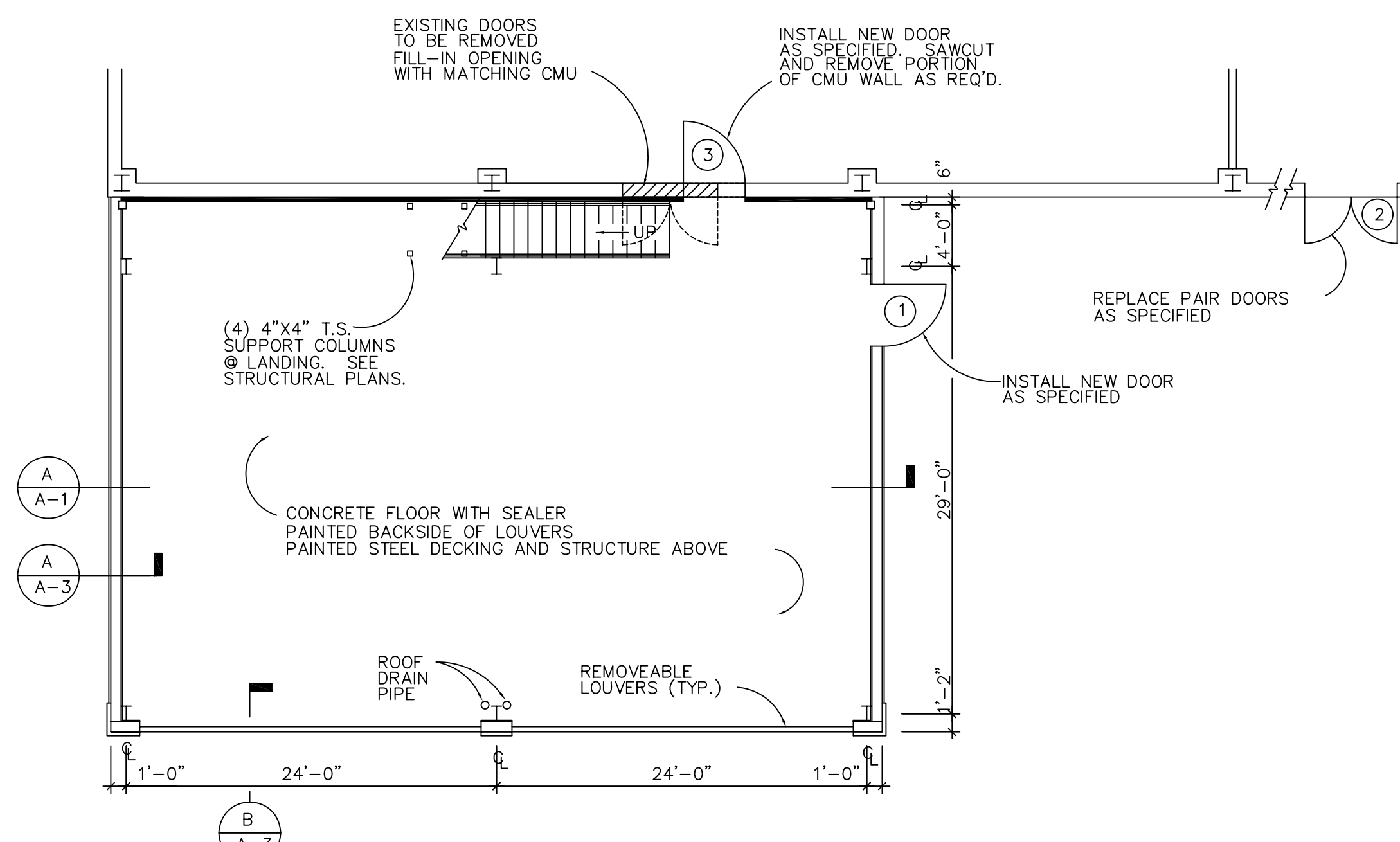
**ELECTRICAL PLAN – SECOND FLOOR  
HEATING AND COOLING PLANT**

SCALE: 1/8" = 1'-0"

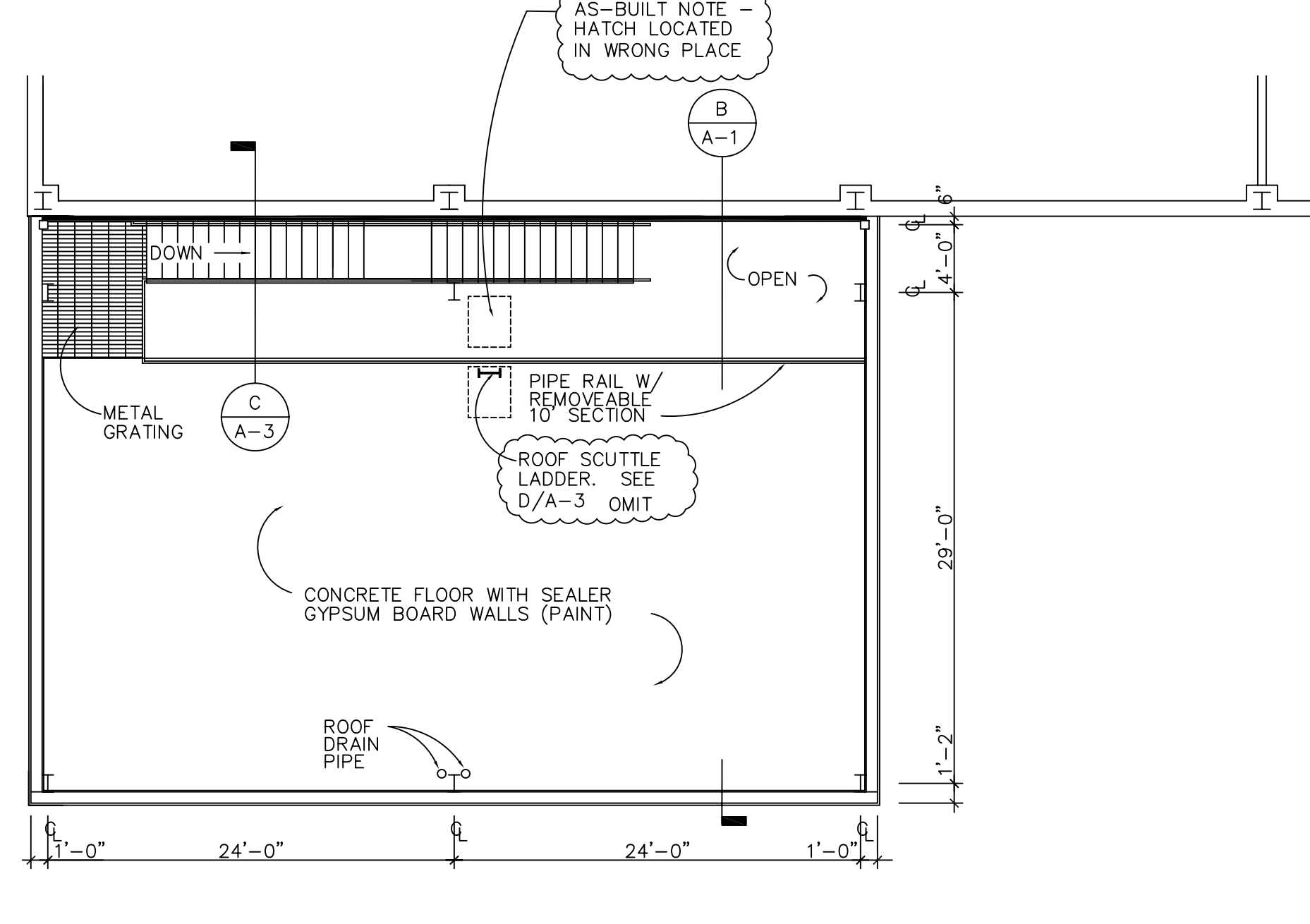
**NOTE:**  
IT IS NOT INTENDED THAT THE PLANS SHOW ALL OFFSETS IN PIPES, CONDUITS, AND DUCTS REQUIRED FOR INSTALLATION OF THE WORK. DETAILS AND SECTIONS ARE INCLUDED FOR SOME AREAS TO SHOW INTENDED RELATIONSHIP OF THE WORK OF VARIOUS TRADES. IT SHALL BE THE RESPONSIBILITY OF THE CONTRACTOR AND SUB-CONTRACTORS TO COORDINATE INSTALLATION OF THE WORK AND TO PROVIDE THE NECESSARY OFFSETS, TRANSFORMATIONS AND FITTINGS REQUIRED. NO ADDITIONAL COMPENSATION WILL BE ALLOWED FOR CORRECTING CONFLICTS BETWEEN THE WORK OF VARIOUS TRADES. DETAILS AND SECTIONS ARE SHOWN FOR THE CONTRACTORS CONVENIENCE AND SHALL NOT BE CONSIDERED COMPLETE IN EVERY DETAIL.

RECORD DRAWINGS DATE 11/11/03  
These record drawings have been prepared, in part, on the basis of information compiled and furnished by others. The Engineer will not be responsible for any errors or omissions which have been incorporated into this document as a result. STAGGS & FISHER CONSULTING ENGINEERS, INC.

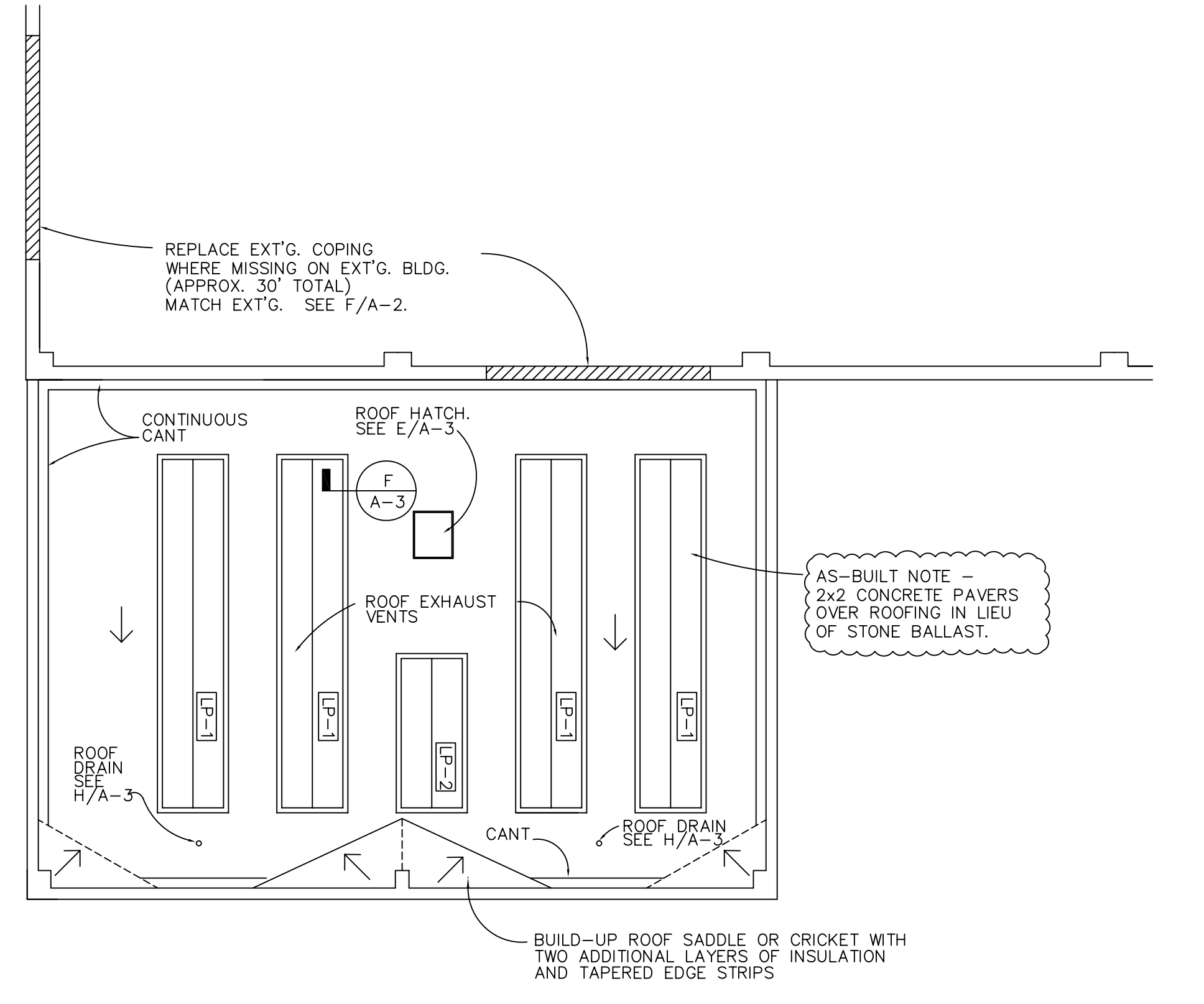
	<p><b>Staggs and Fisher</b> Consulting Engineers, Inc. 3264 Lochness Dr. Lexington, Kentucky 40517</p>	project no. 97511 date 1/1/03
	ELECTRICAL PLANS – HEATING AND COOLING PLANT	drawn by JWA checked by GGC revision 1
	UNIVERSITY OF KENTUCKY LEXINGTON, KENTUCKY	drawing no. <b>E-4</b>
	approved by _____	director – design and construction division date _____



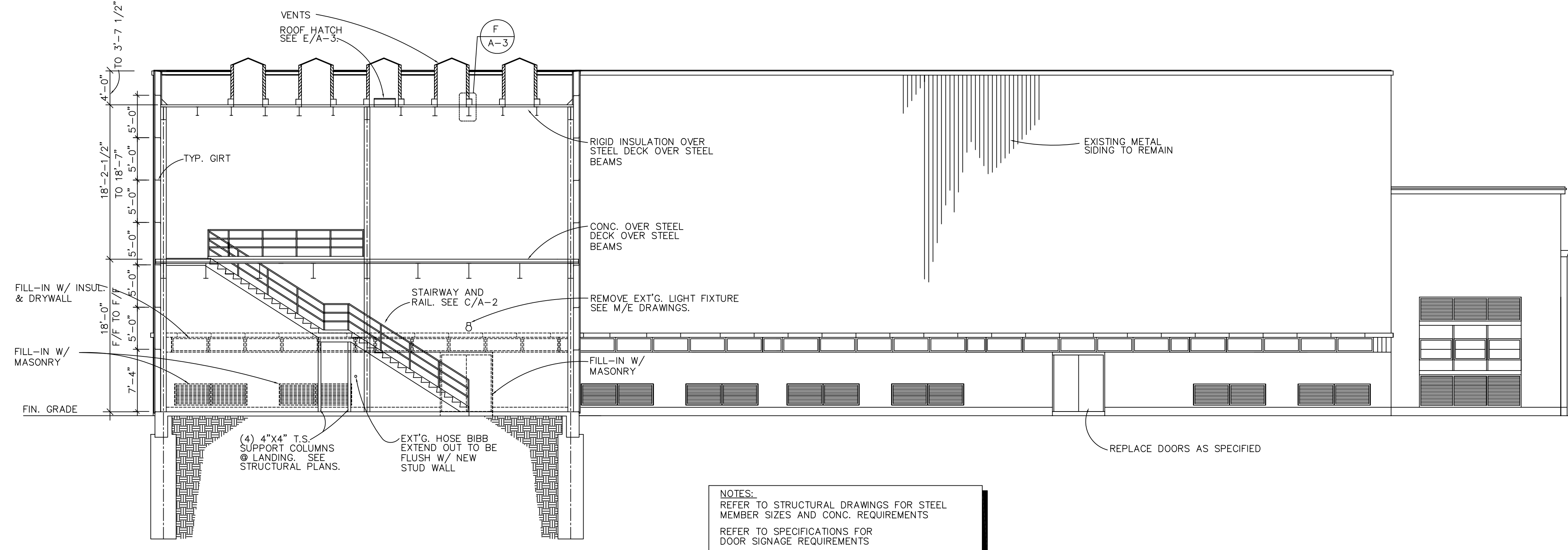
FIRST FLOOR ADDITION PLAN  
SCALE: 1/8" = 1'-0"



SECOND FLOOR ADDITION PLAN  
SCALE: 1/8" = 1'-0"

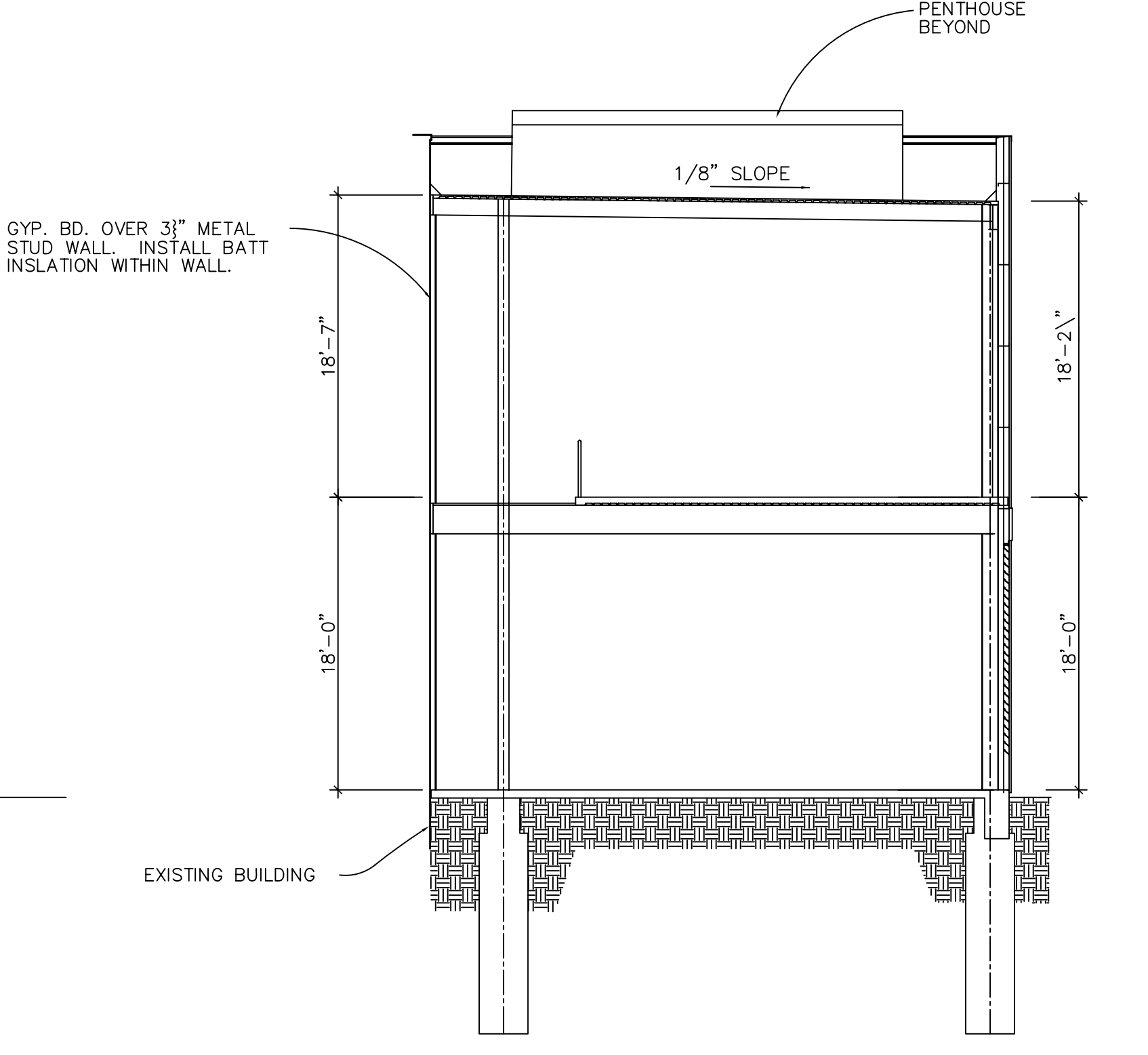


ROOF ADDITION PLAN  
SCALE: 1/8" = 1'-0"



A BUILDING SECTION  
SCALE: 1/8" = 1'-0"

NOTES:  
REFER TO STRUCTURAL DRAWINGS FOR STEEL MEMBER SIZES AND CONC. REQUIREMENTS  
REFER TO SPECIFICATIONS FOR DOOR SIGNAGE REQUIREMENTS



B BUILDING SECTION  
SCALE: 1/8" = 1'-0"

PROJECT DESCRIPTION	BUILDING STATISTICS
WORK FOR THIS PROJECT INCLUDES THE ADDITION OF 3,488 S.F. TO AN EXISTING BOILER PLANT FOR THE CHANDLER MEDICAL CENTER, UNIVERSITY OF KENTUCKY. EXISTING BOILER PLANT IS 17,234 SF. (EXISTING BUILDING IS DIVIDED BY FIREWALLS).	KENTUCKY BUILDING CODE COMPLIANCE: 1997 SEVENTH EDITION
	NFPA 101: LIFE SAFETY CODE: 1997 EDITION
	USE GROUP: F-1
	CONSTRUCTION TYPE: 2C
GROSS SQUARE FOOTAGE AREA IN THIS PROJECT	1,744 S.F. FIRST LEVEL 1,744 S.F. SECOND LEVEL 3,488 S.F. SECOND LEVEL

AS-BUILT DRAWINGS  
JAMES W. POTTS - ARCHITECTS  
MAY 31, 2002

*James W. Potts*  
ARCHITECTS  
431 S. MILL ST. • LEXINGTON, KENTUCKY • 40508-2923

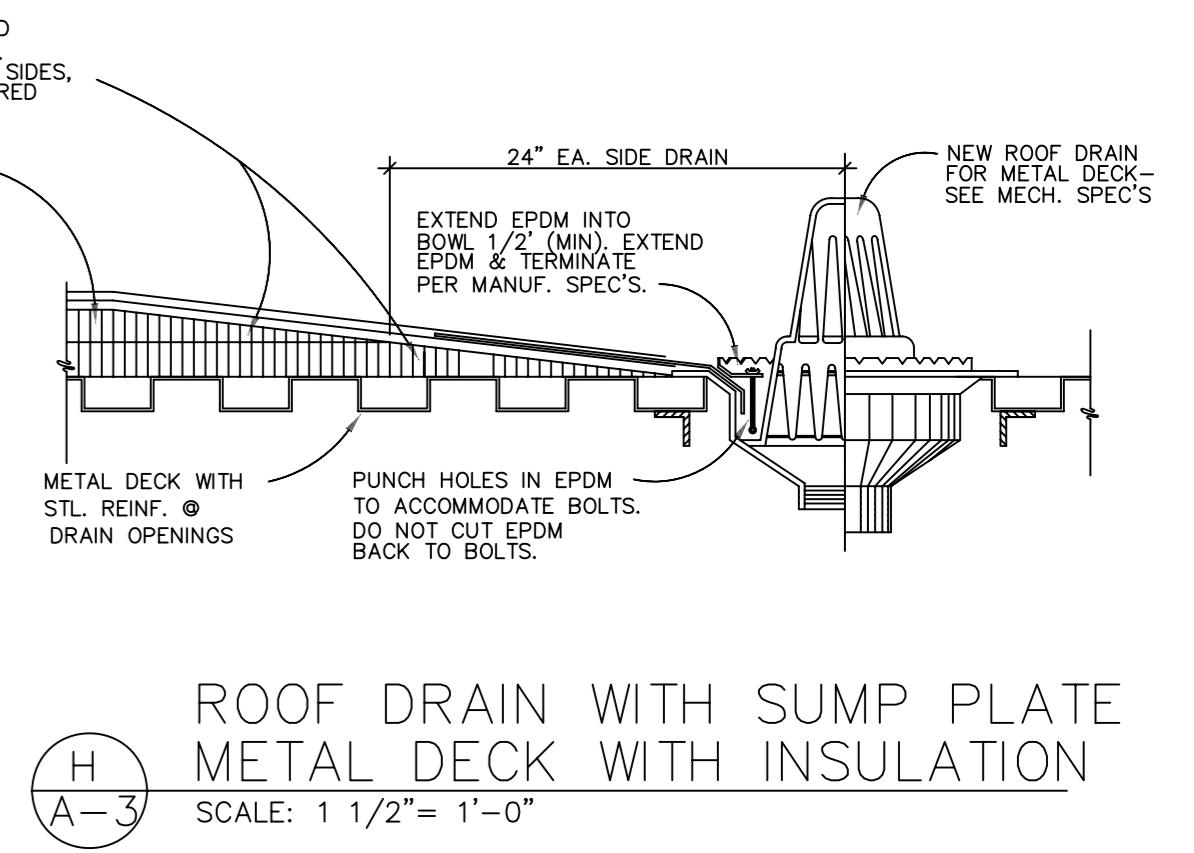
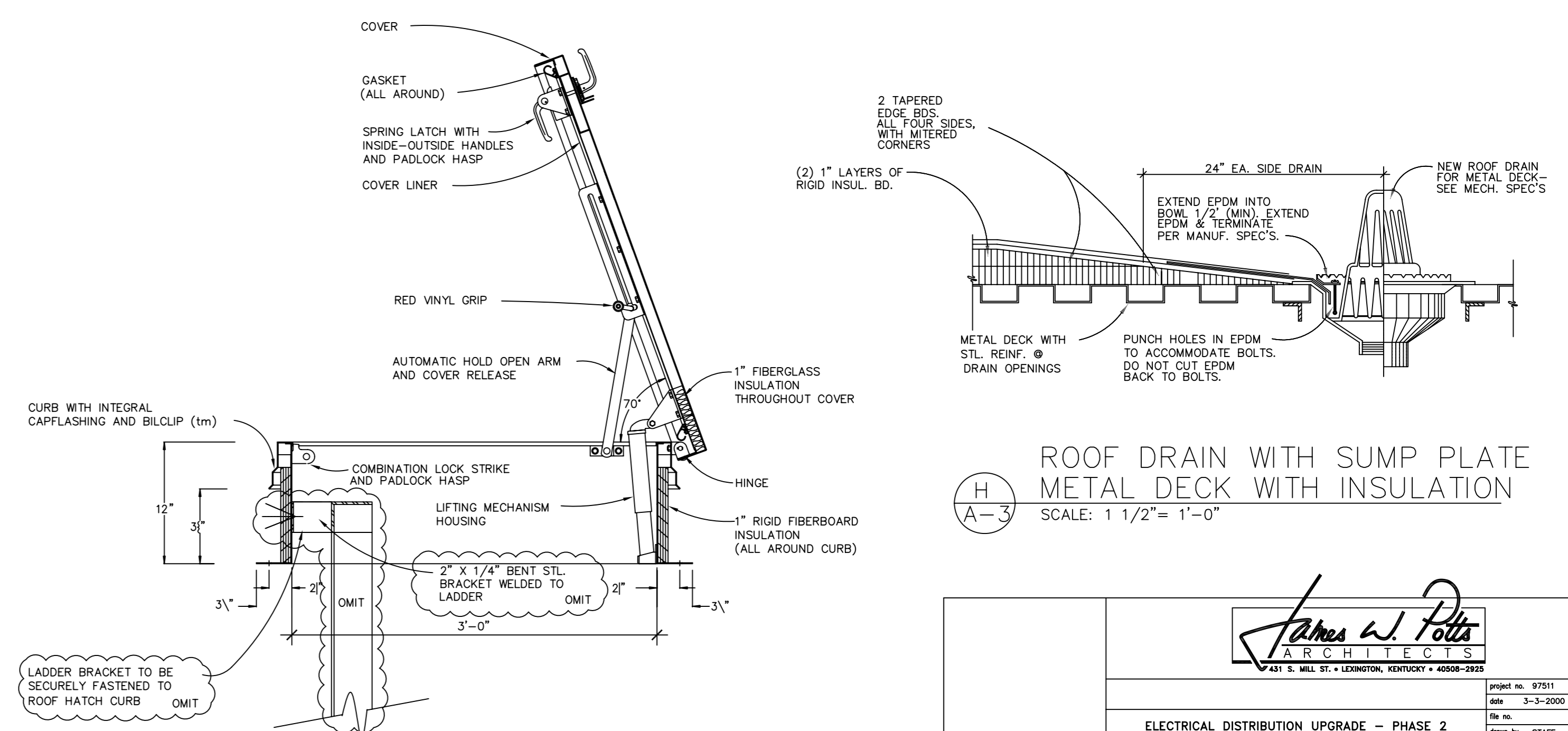
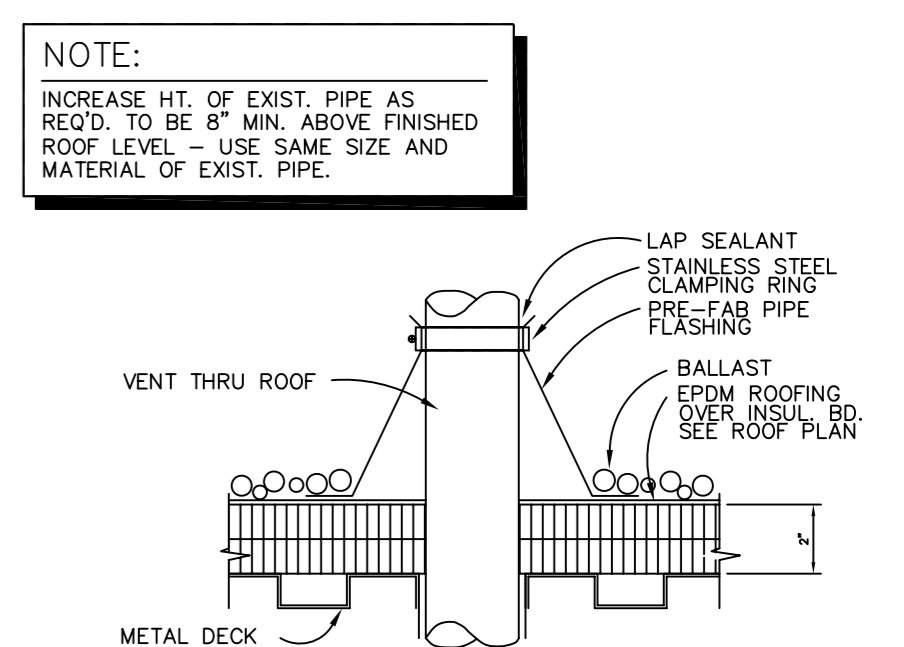
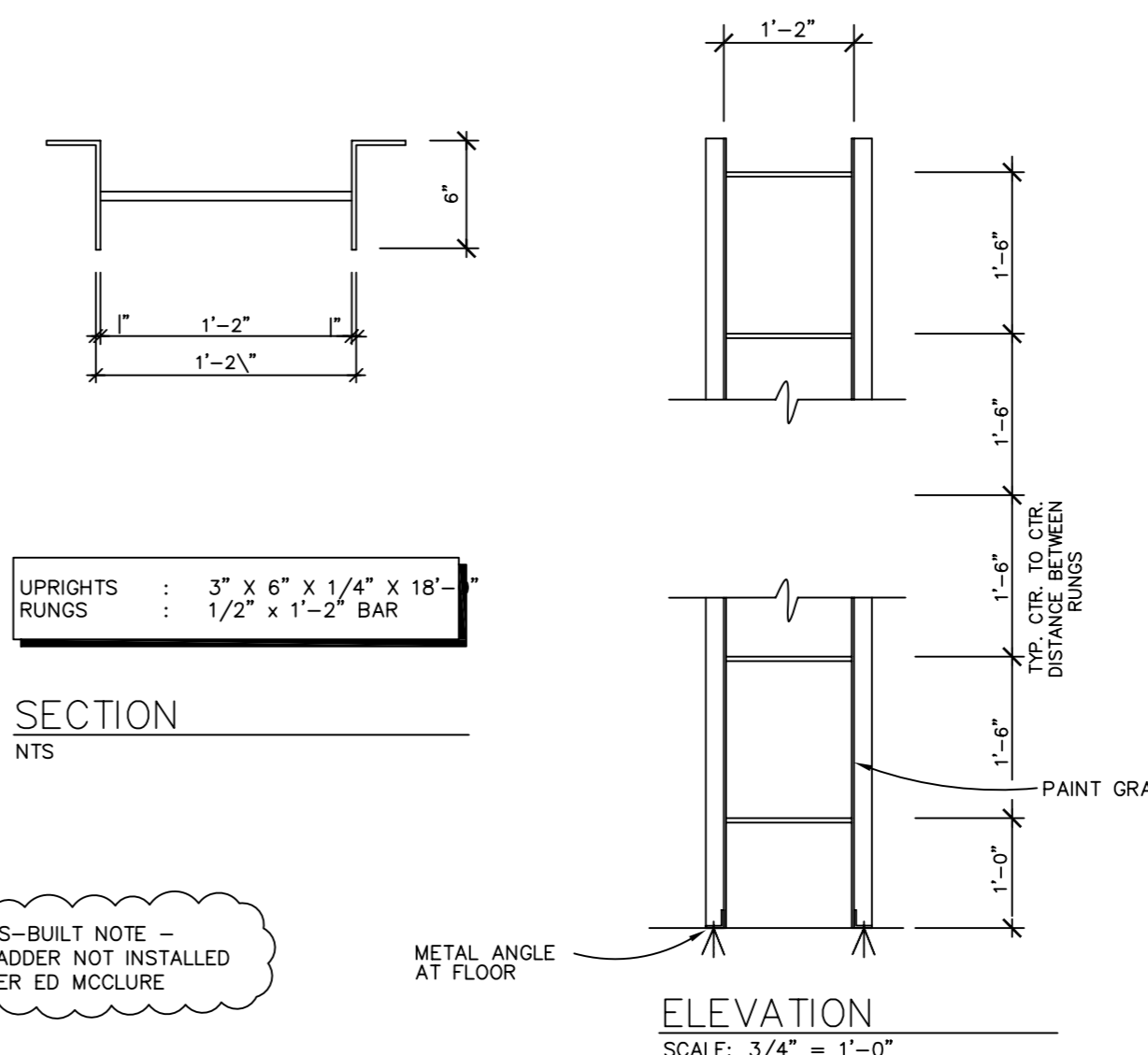
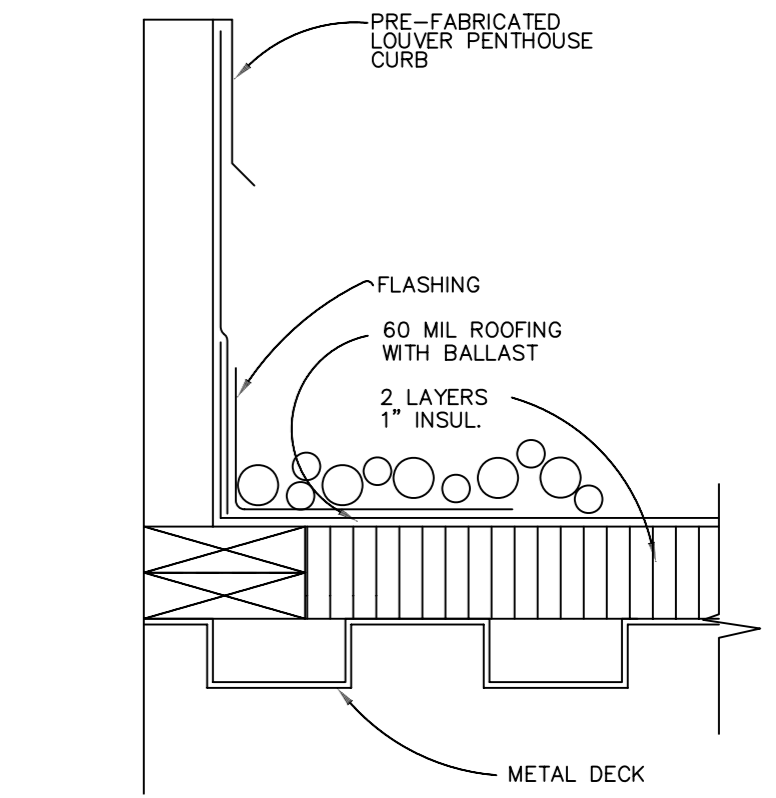
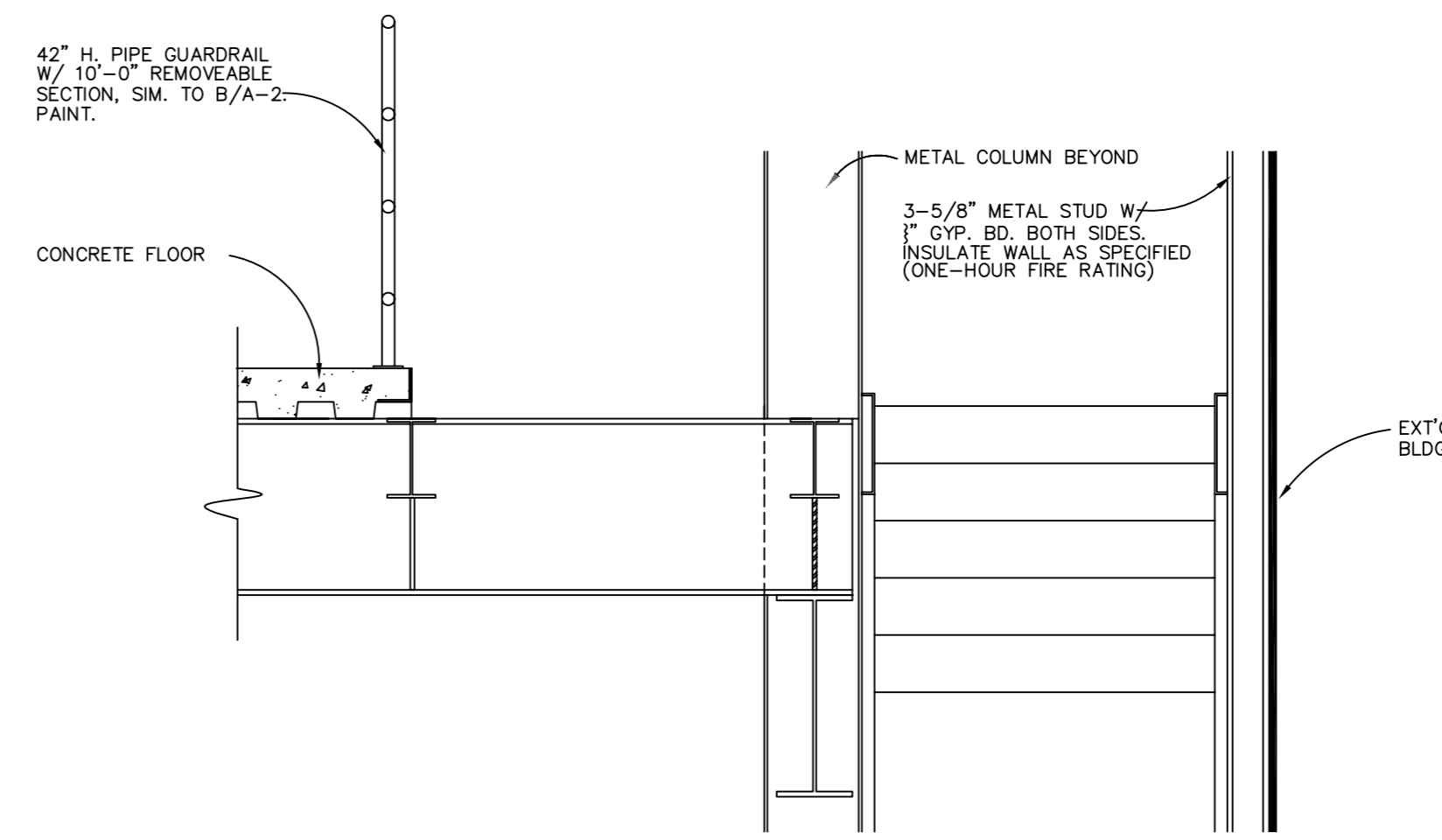
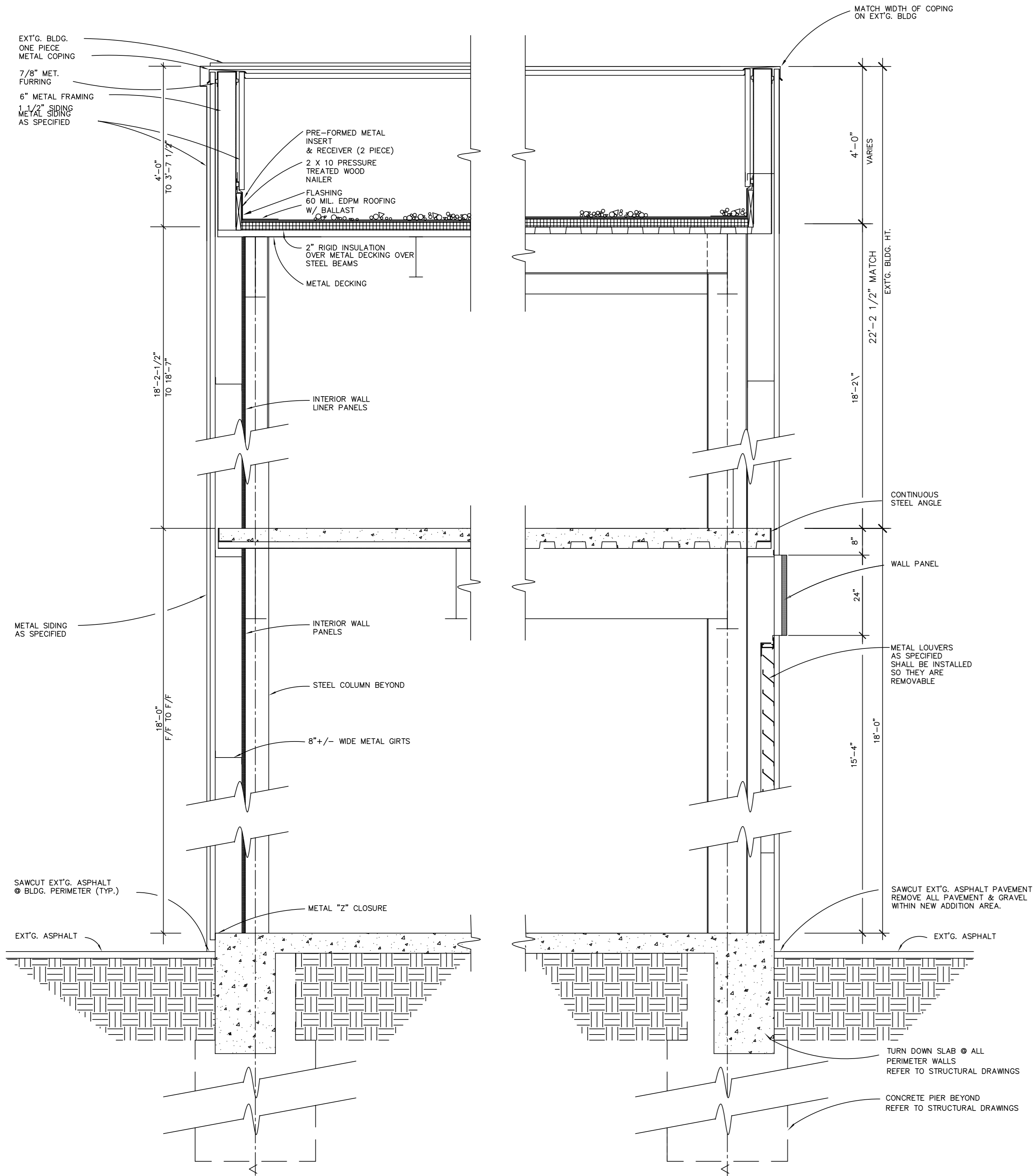
project no. 97311	date 3-3-2000
file no.	drawn by STAFF
checked by JWP	revision
drawing no. A-1	

ELECTRICAL DISTRIBUTION UPGRADE - PHASE 2  
UNIVERSITY OF KENTUCKY  
LEXINGTON, KENTUCKY PROJECT NO. 1673.0

University of Kentucky  
Lexington, Kentucky

approved by \_\_\_\_\_  
director - design and construction division





**AS-BUILT DRAWINGS**  
JAMES W. POTTS - ARCHITECTS  
MAY 31, 2002

**James W. Potts**  
ARCHITECTS  
431 S. MILL ST. • LEXINGTON, KENTUCKY • 40508-2825

project no. 97311	date 3-3-2000
ELECTRICAL DISTRIBUTION UPGRADE - PHASE 2	drawn by STAFF
UNIVERSITY OF KENTUCKY	checked by JWP
LEXINGTON, KENTUCKY PROJECT NO. 1673.0	revision
University of Kentucky	drawing no. A-3
Lexington, Kentucky	approved by
director - design and construction division	date