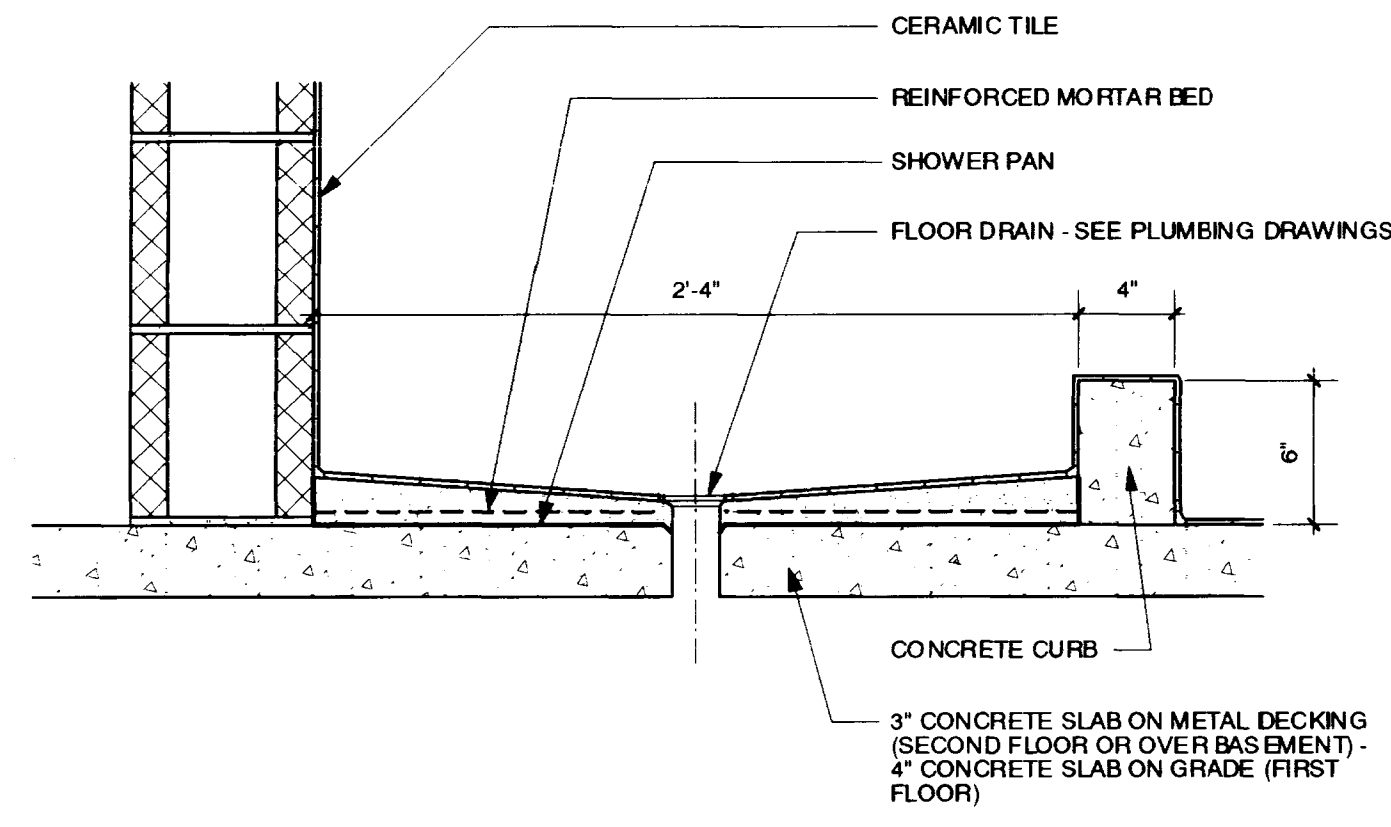
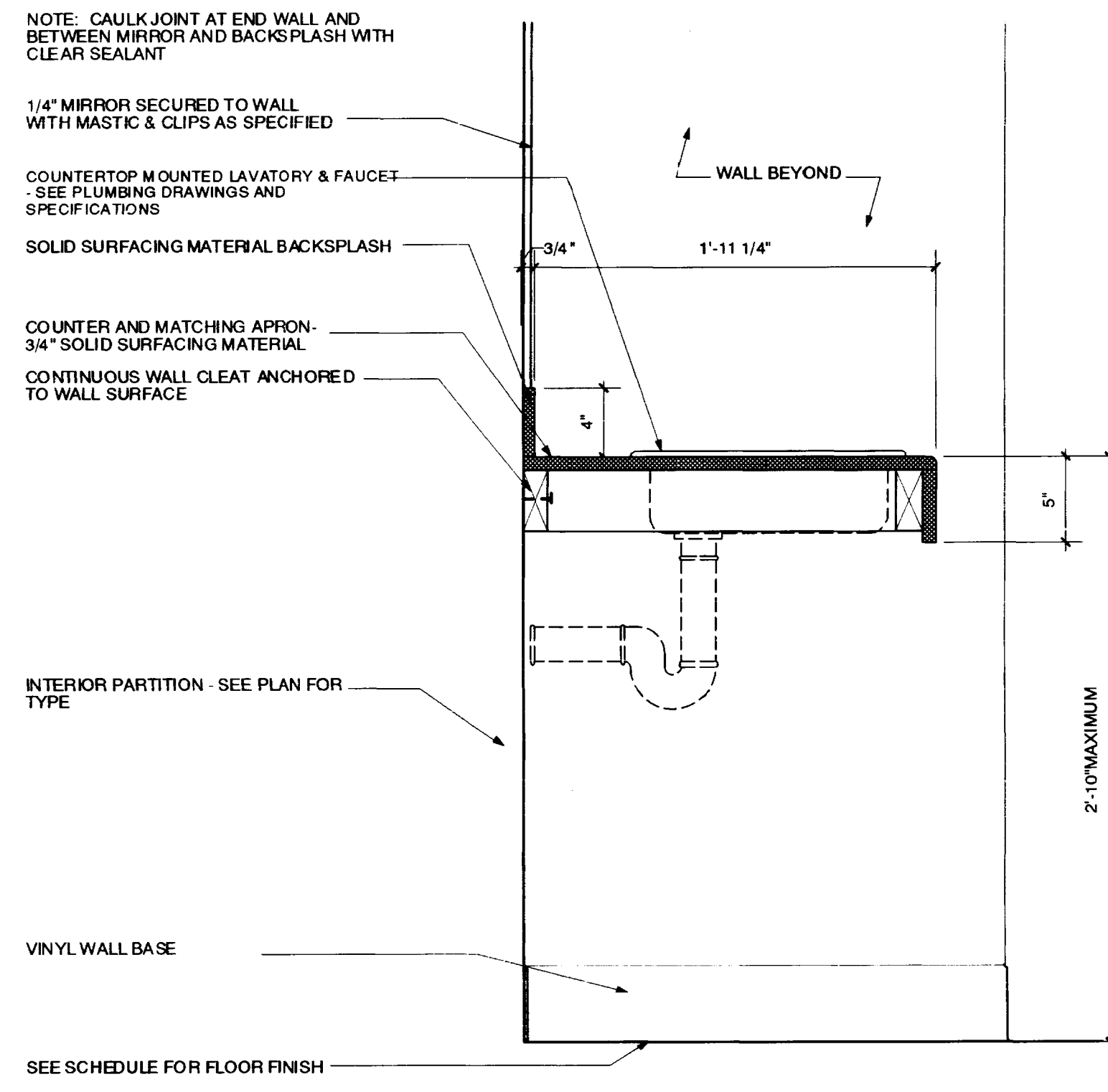


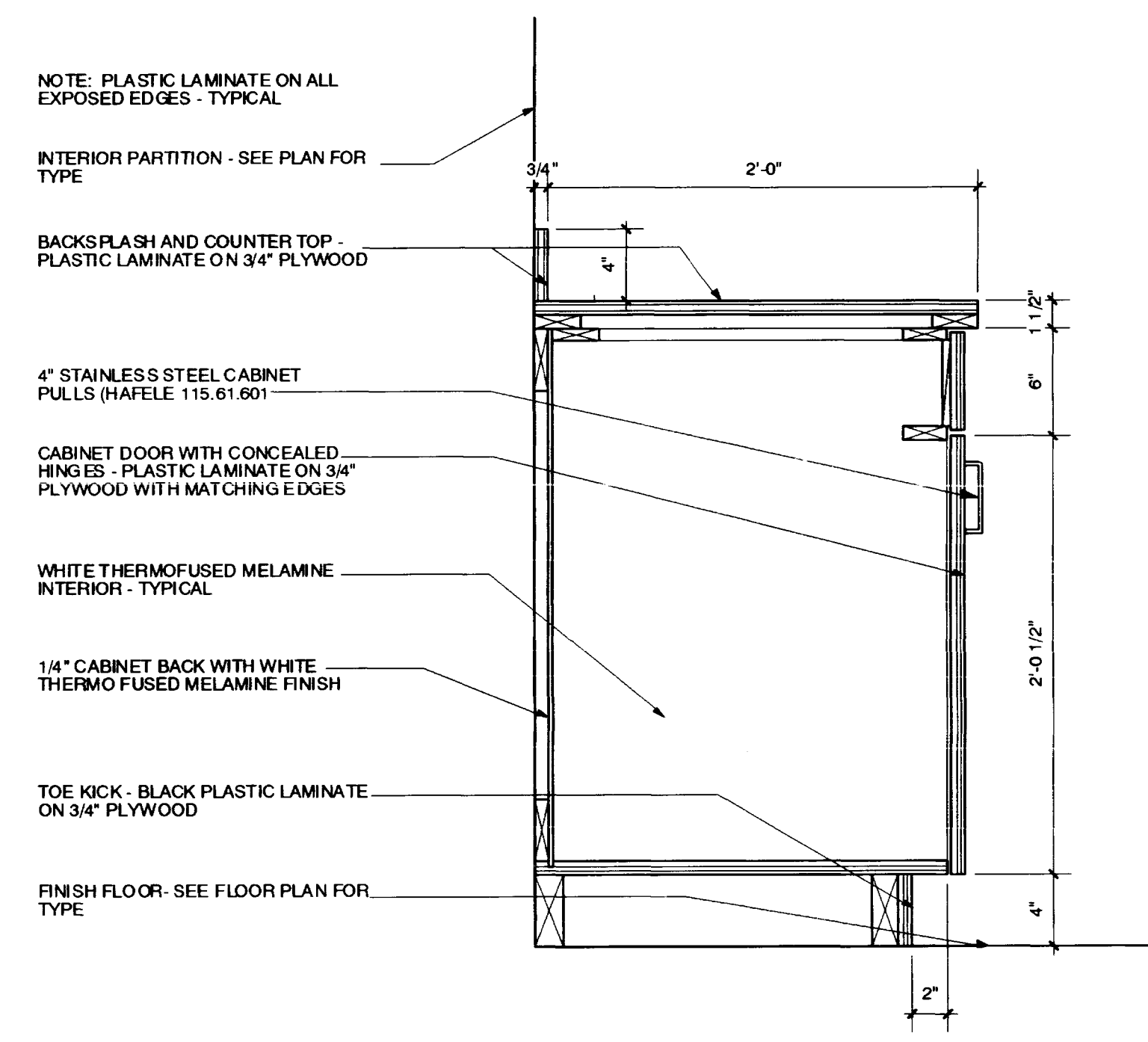
**1 DETAIL**  
A-9.2 1 1/2" = 1'-0"



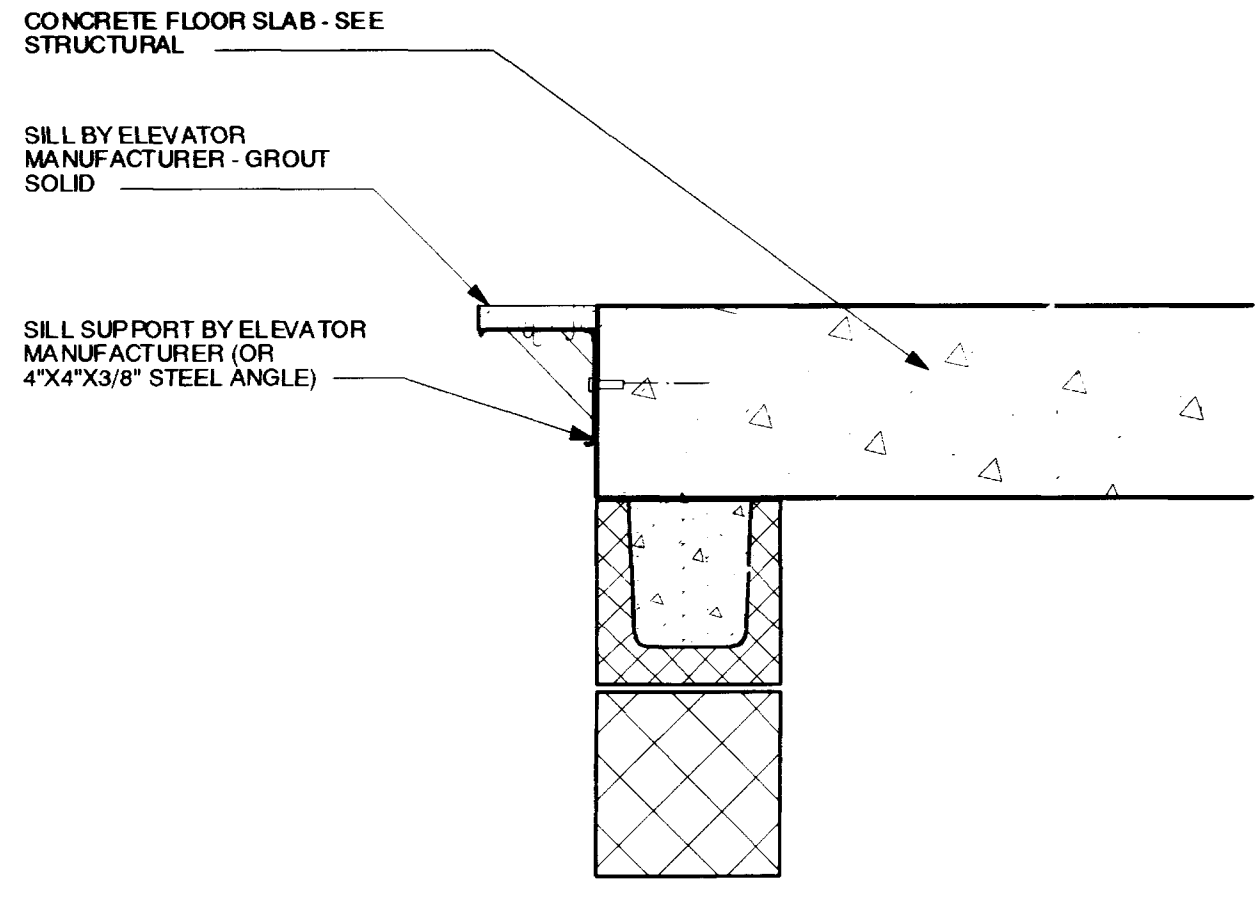
**2 DETAIL**  
A-9.2 1 1/2" = 1'-0"



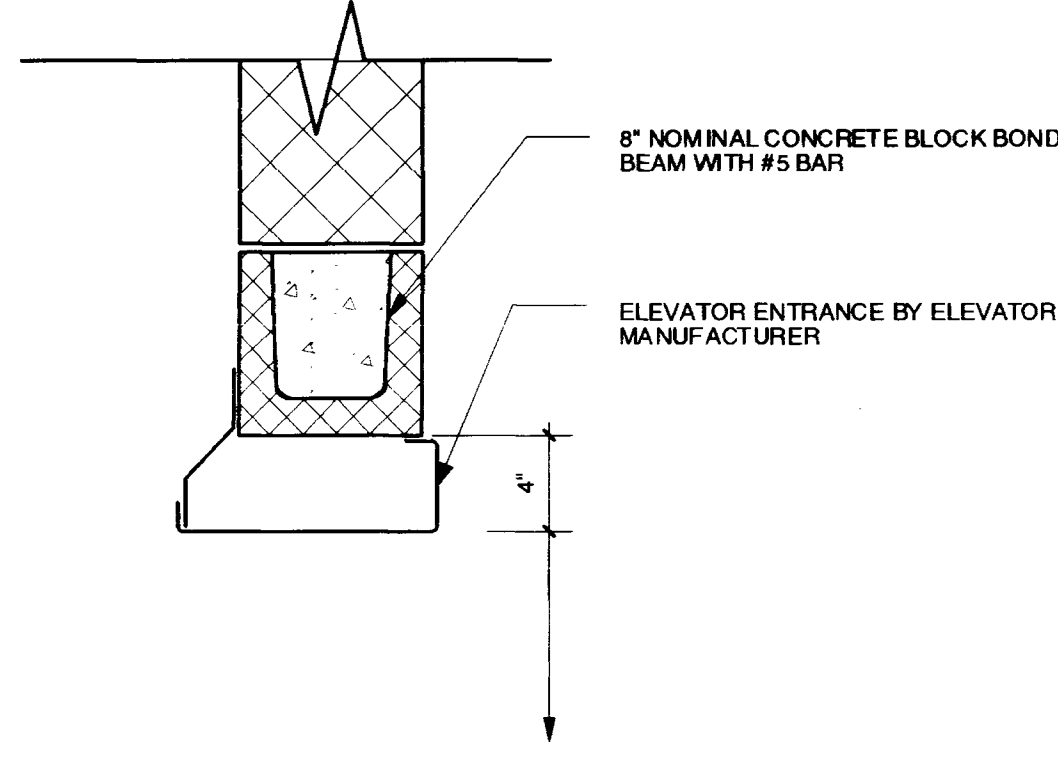
**3 DETAIL**  
A-9.2 1 1/2" = 1'-0"



**4 DETAIL**  
A-9.2 1 1/2" = 1'-0"



**5 DETAIL**  
A-9.2 1 1/2" = 1'-0"



**6 DETAIL**  
A-9.2 1 1/2" = 1'-0"

NOTE: CAULK JOINT AT END WALL AND BETWEEN MIRROR AND BACKSPLASH WITH CLEAR SEALANT

COUNTERTOP MOUNTED LAVATORY & FAUCET - SEE PLUMBING DRAWINGS AND SPECIFICATIONS

1/4" MIRROR SECURED TO WALL WITH MASTIC & CLIPS AS SPECIFIED

SOLID SURFACING MATERIAL BACKSPLASH

COUNTER AND MATCHING APRON - 3/4" SOLID SURFACING MATERIAL

CONTINUOUS WALL CLEAT ANCHORED TO WALL SURFACE

INTERIOR PARTITION - SEE PLAN FOR TYPE

VINYL WALL BASE

SEE SCHEDULE FOR FLOOR FINISH

NOTE: PLASTIC LAMINATE ON ALL EXPOSED EDGES - TYPICAL

INTERIOR PARTITION - SEE PLAN FOR TYPE

BACKSPLASH AND COUNTER TOP - PLASTIC LAMINATE ON 3/4" PLYWOOD

4" STAINLESS STEEL CABINET PULLS (HAFELE 115.61.601)

CABINET DOOR WITH CONCEALED HINGES - PLASTIC LAMINATE ON 3/4" PLYWOOD WITH MATCHING EDGES

WHITE THERMOFUSED MELAMINE INTERIOR - TYPICAL

1/4" CABINET BACK WITH WHITE THERMO FUSED MELAMINE FINISH

TOE KICK - BLACK PLASTIC LAMINATE ON 3/4" PLYWOOD

FINISH FLOOR - SEE FLOOR PLAN FOR TYPE

FRATERNITY HOUSE REPLACEMENT - PROJECT 1747.0

UNIVERSITY OF KENTUCKY

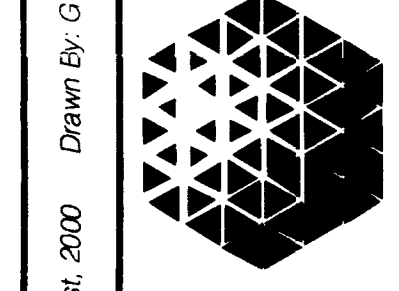
LEXINGTON, KENTUCKY

INTERIOR DETAILS

**A-9.2**  
Sheet Document #

RECORD DRAWINGS  
These record drawings have been prepared, printed, and submitted to the local building department for recording. The Architect will not be responsible for the accuracy of the information contained herein unless it has been incorporated into this document as a "RECORD DRAWING".  
DATE: 8-21-02

**Omni**  
Architects



Architecture  
Interior Architecture  
Planning  
Interior  
212 North Ligon Street  
Lexington, KY 40502  
(606) 253-2624 Fax: (606) 253-2268

This Drawing and Design shown thereon are the property of Omni Architects ©. The reproduction, copying or other use of this drawing without the written consent of Omni Architects is prohibited.  
Checked: JFW  
Drawn By: GWV  
Date: August, 2000  
Job No.: 8913.00  
F. WILLIAMS  
REGISTERED PROFESSIONAL ARCHITECT  
KENTUCKY  
JOSEPH W. WILLIAMS  
REGISTERED PROFESSIONAL ARCHITECT  
KENTUCKY