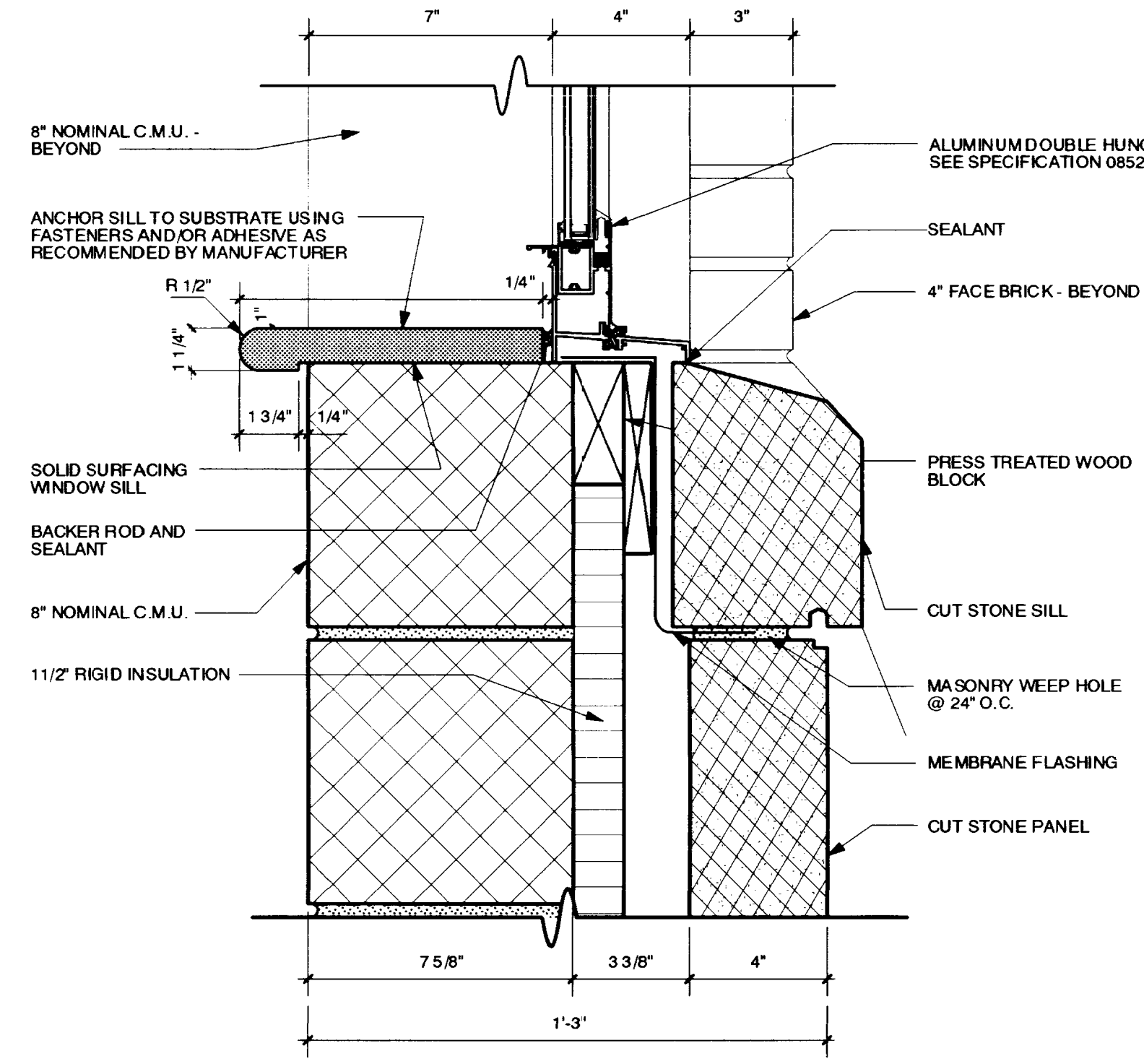
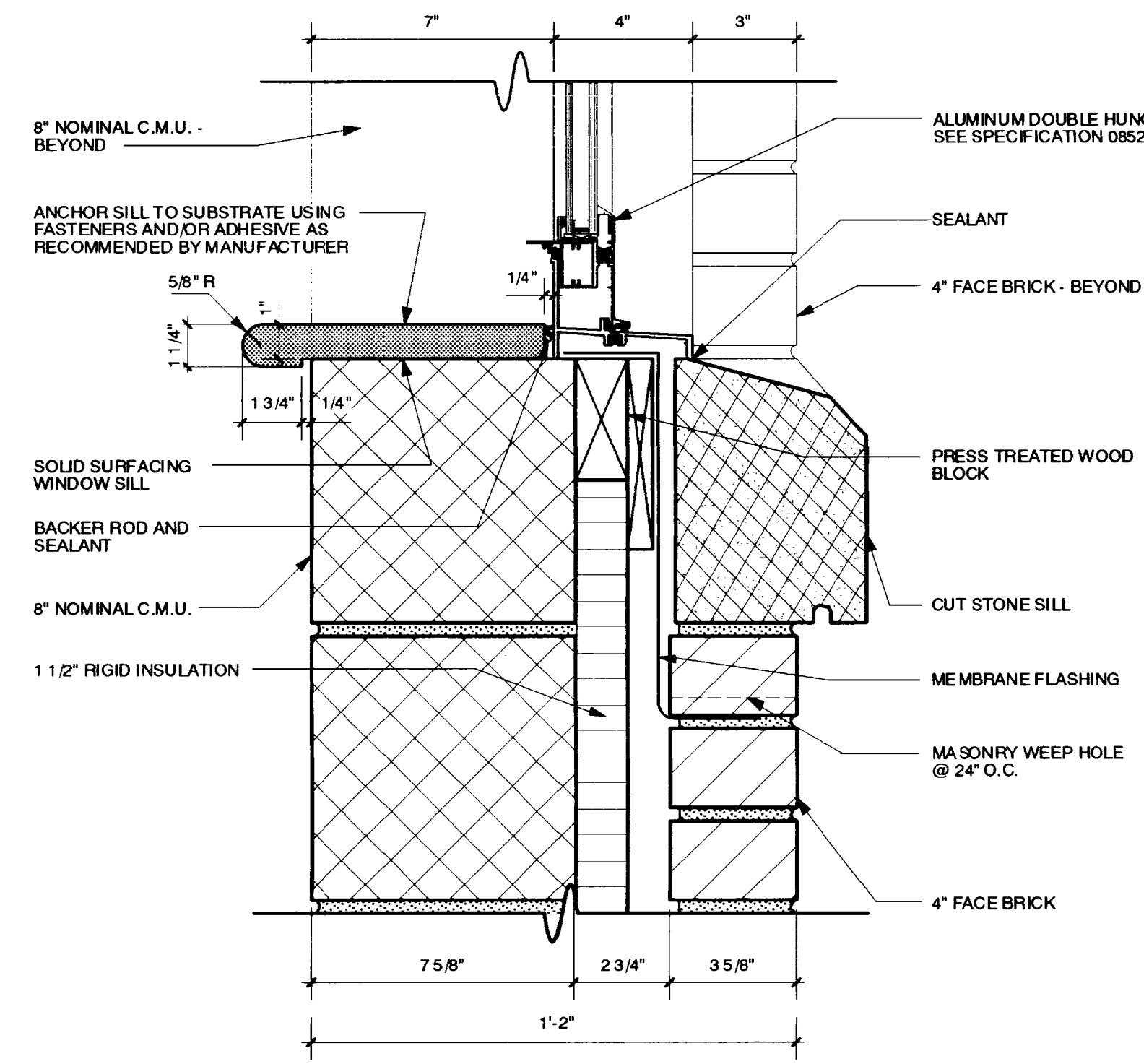


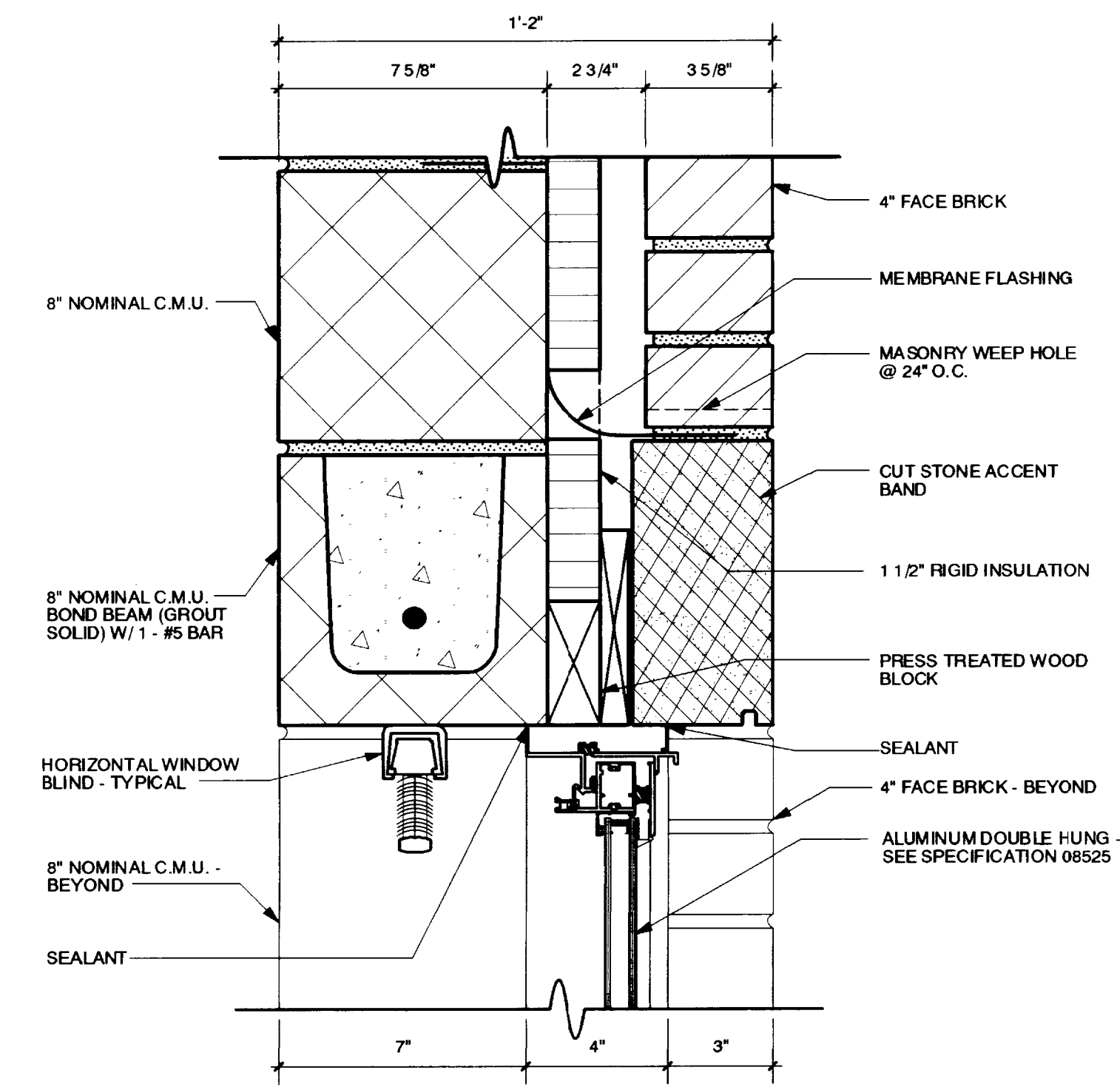
1 SILL
A-8.2 3\"/>



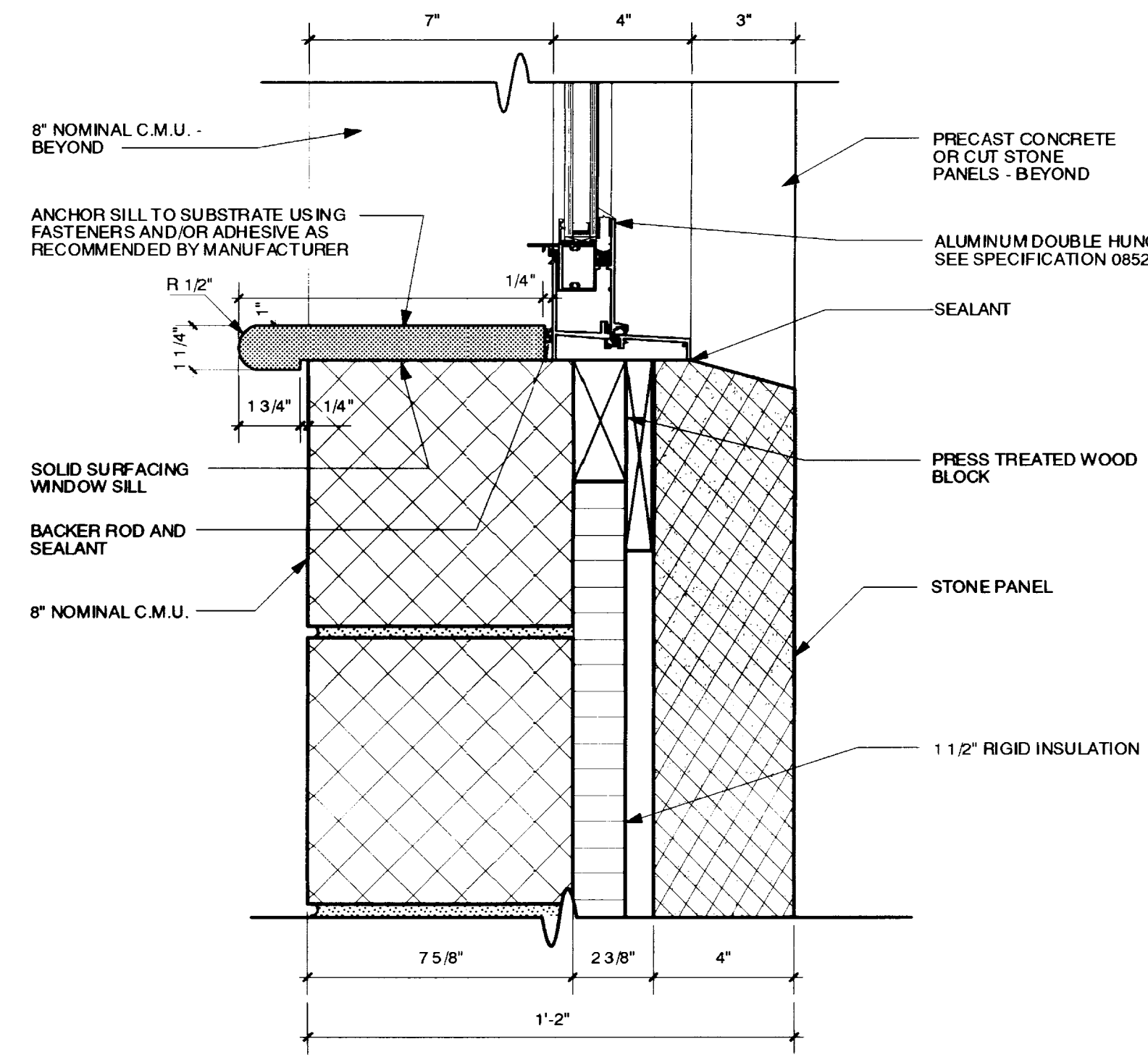
2 SILL
A-8.2 3\"/>



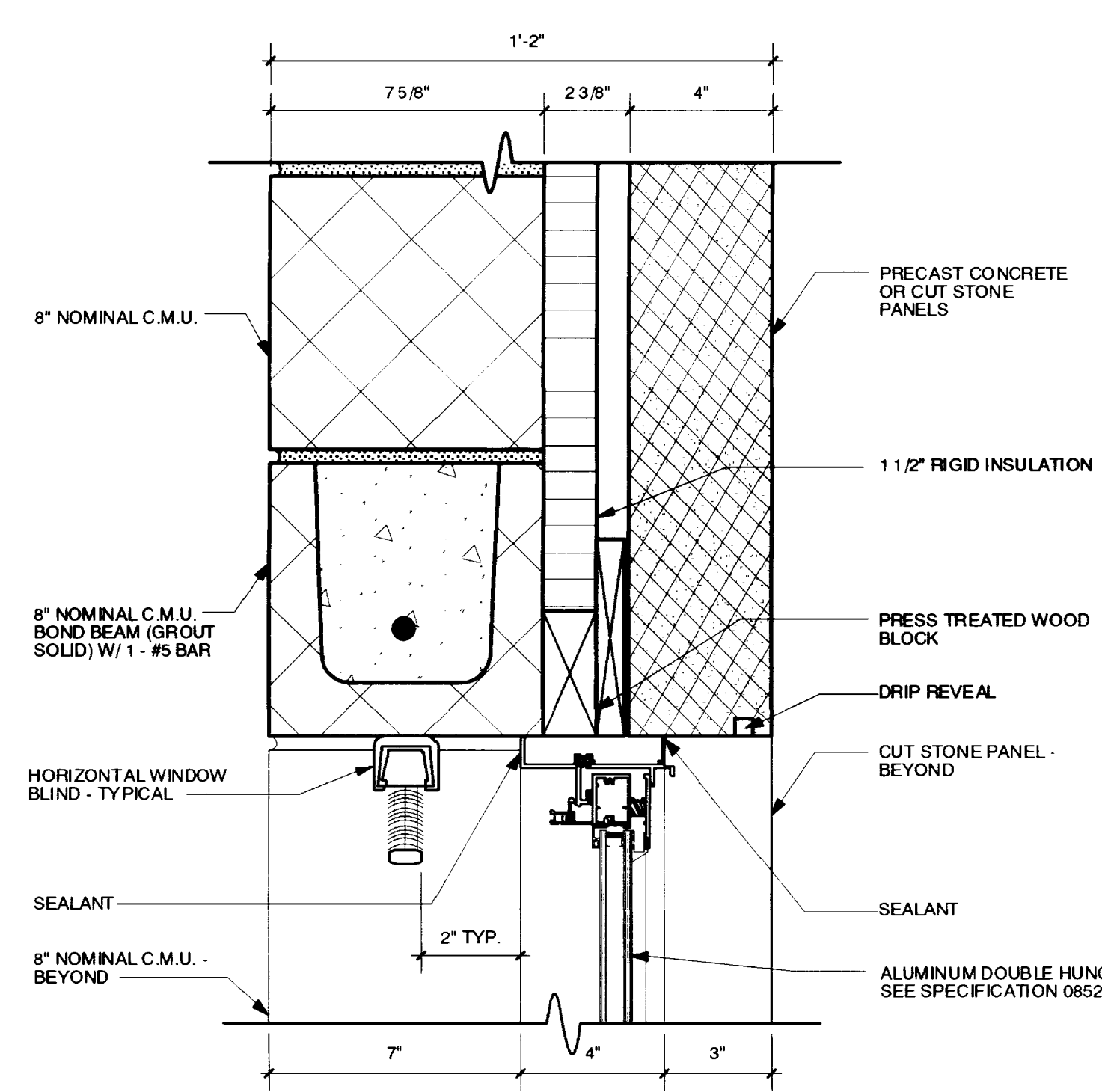
3 SILL
A-8.2 3\"/>



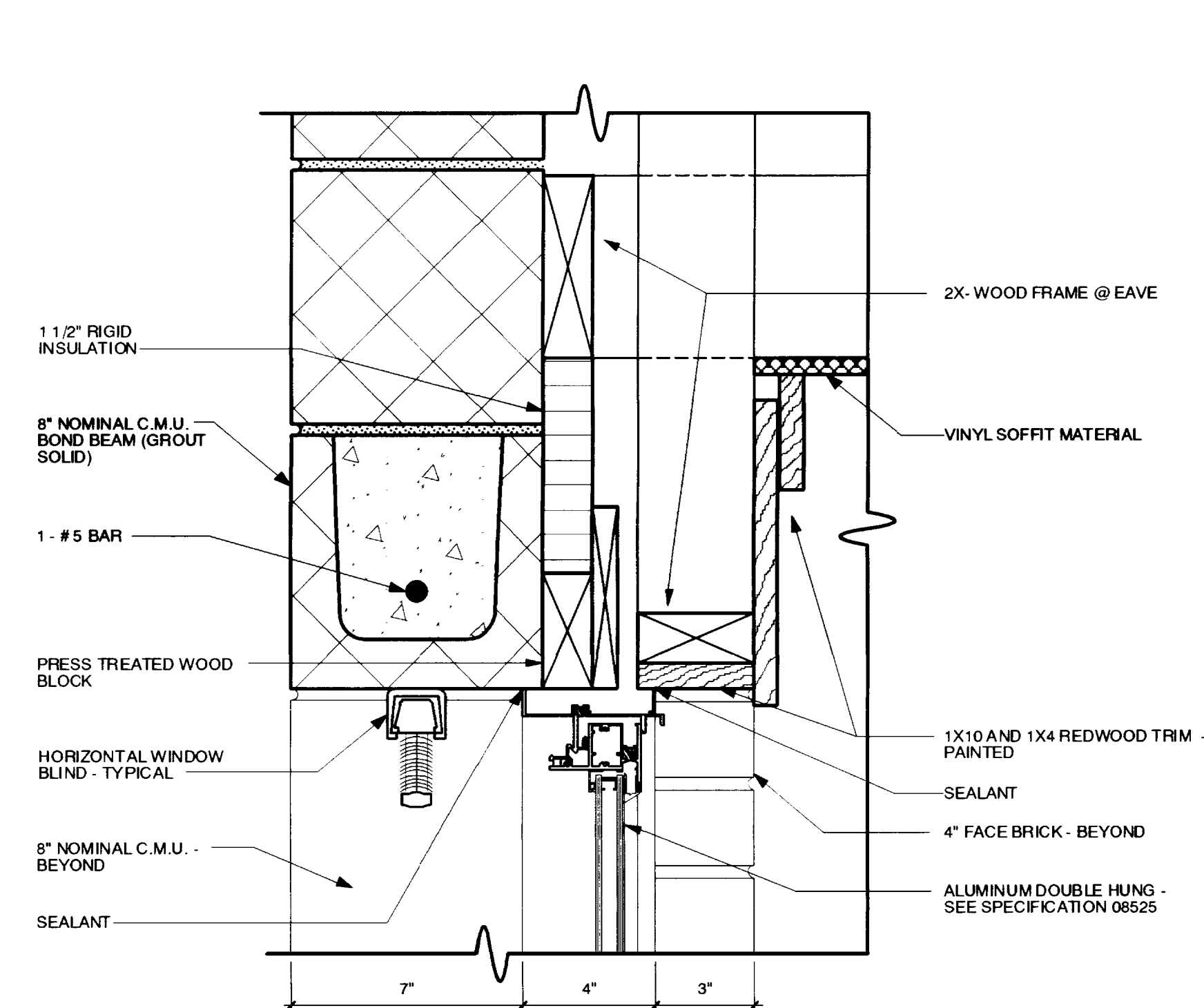
4 HEAD
A-8.2 3\"/>



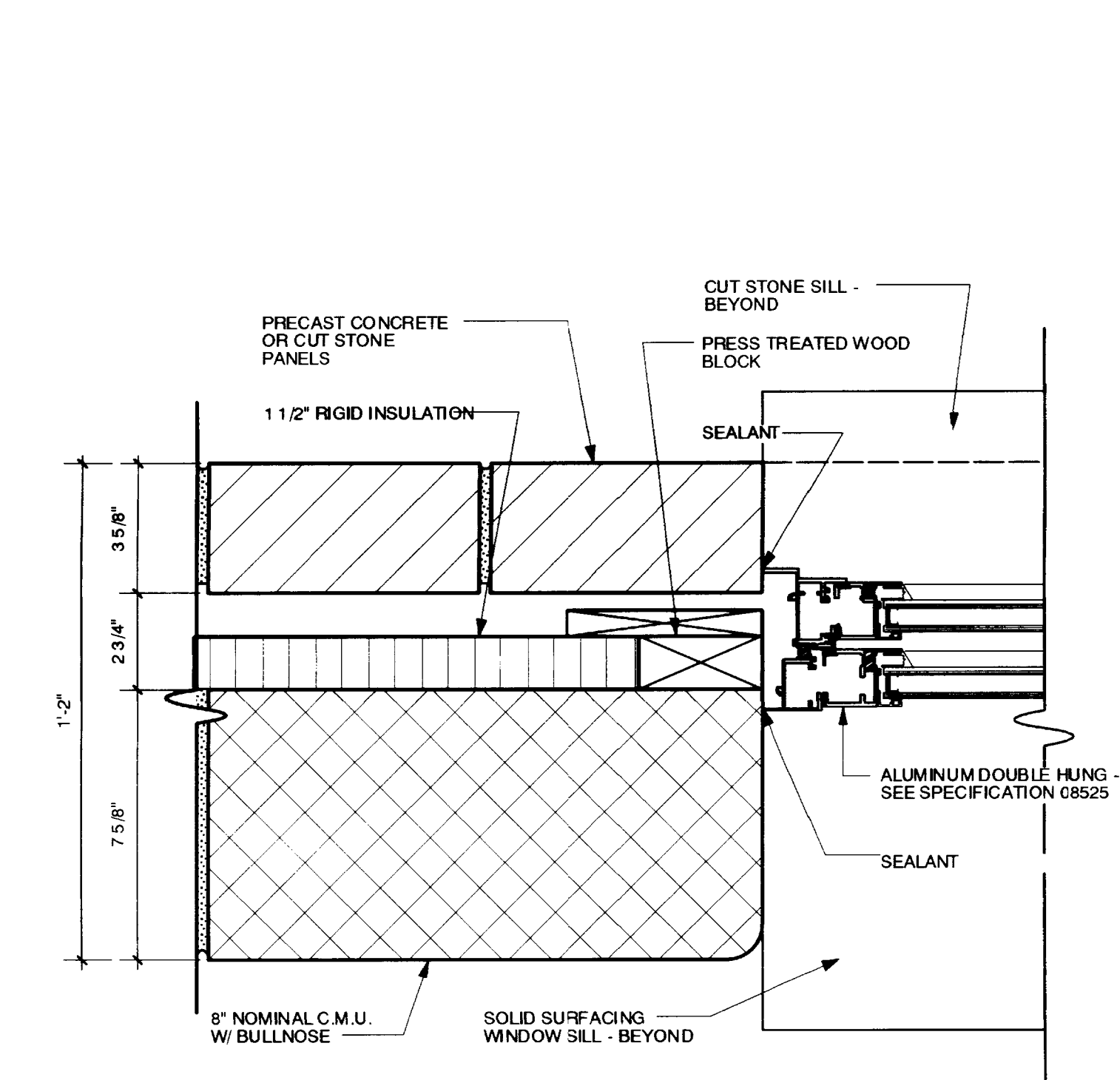
5 SILL
A-8.2 3\"/>



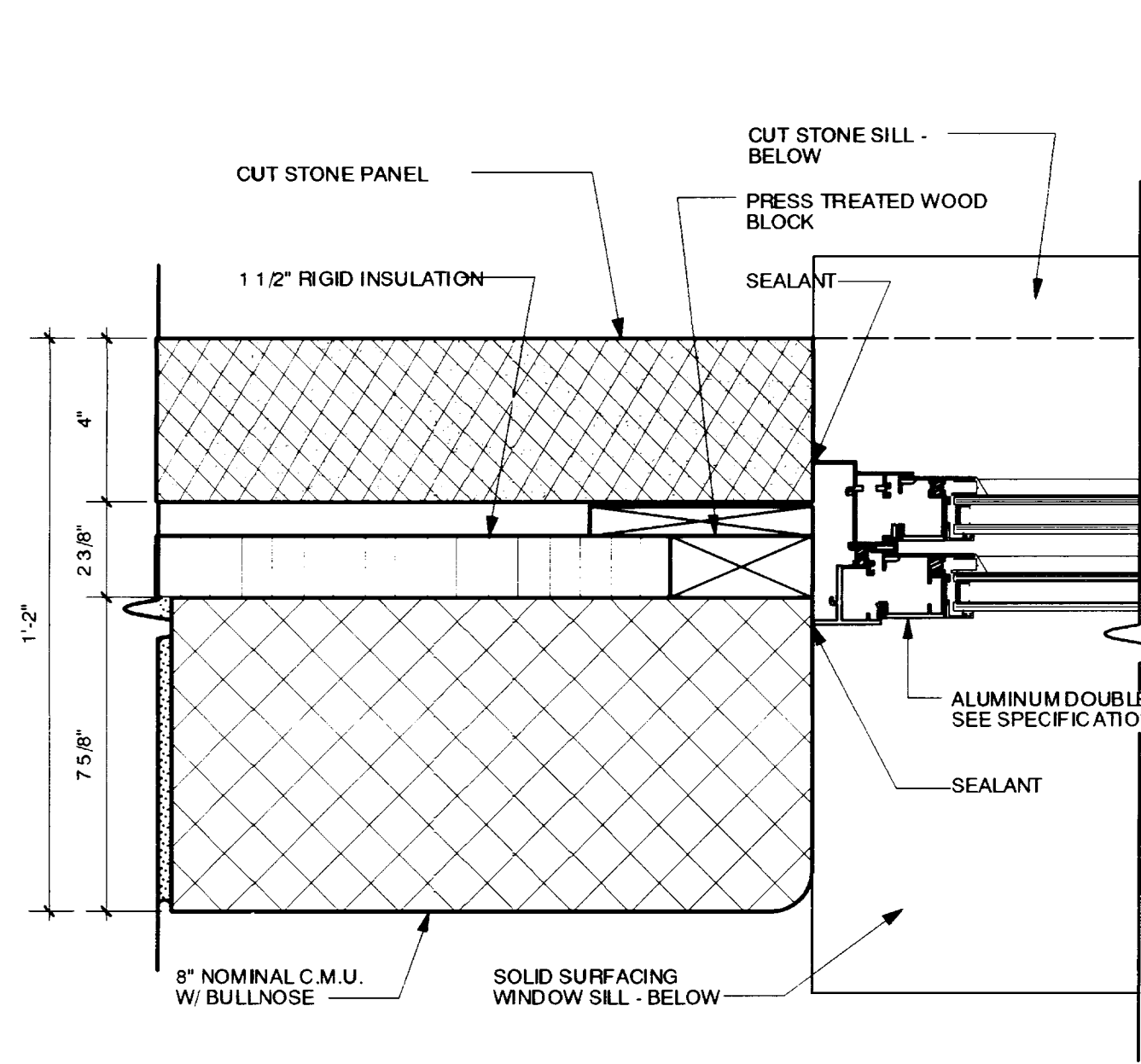
6 HEAD
A-8.2 3\"/>



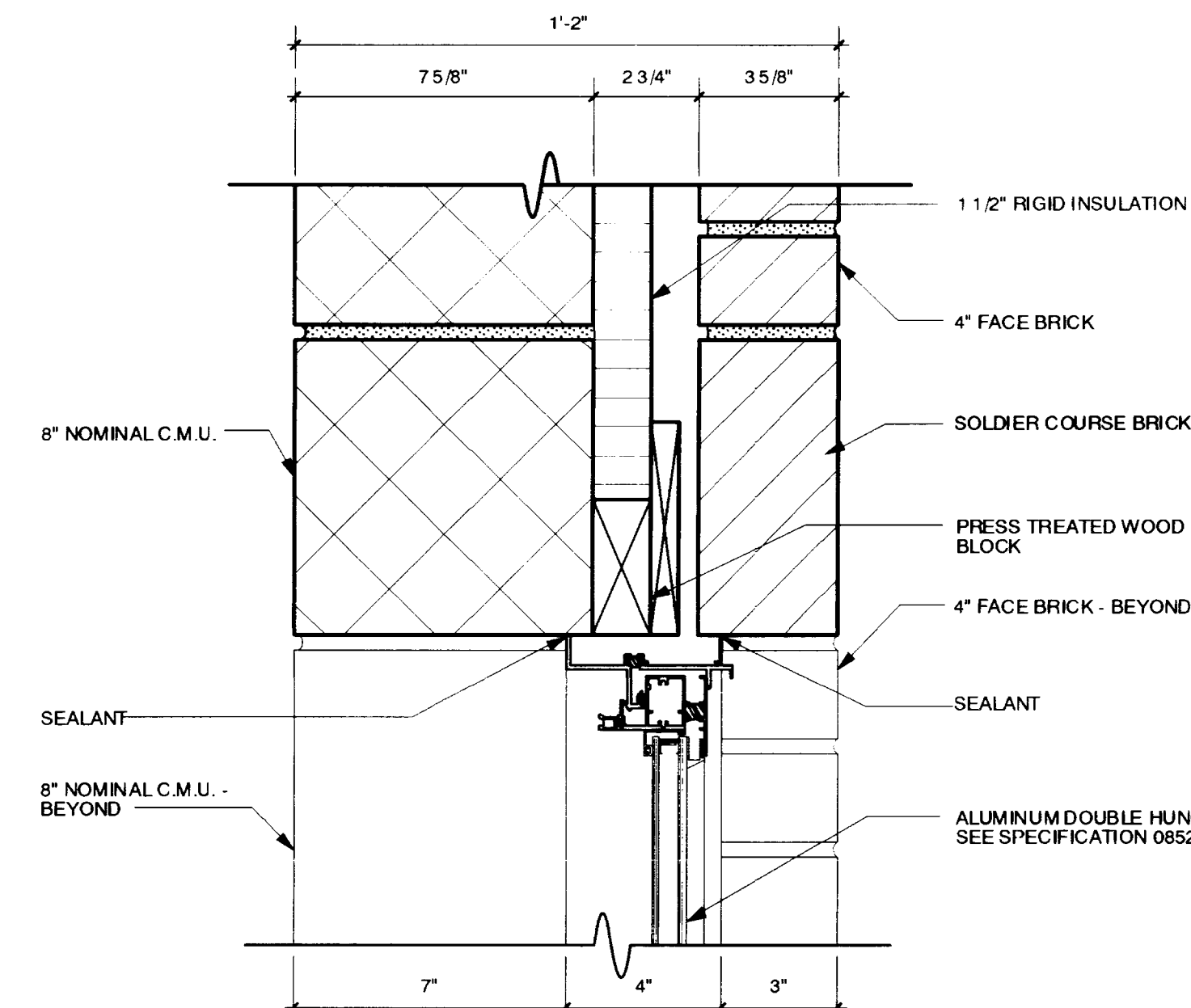
7 HEAD
A-8.2 3\"/>



8 JAMB
A-8.2 3\"/>



9 JAMB
A-8.2 3\"/>



10 HEAD / SILL / JAMB
A-8.2 3\"/>

Job No: 9813.00 Date: August, 2000 Drawn By: JMD Checked: JFW/GMW Revisions:

These record drawings have been prepared in accordance with the standards of the American Institute of Architects. The Architect will not be responsible for any errors or omissions in these drawings unless they have been specifically noted on the drawings as such.

Omni Architects
 6-21-02
 DATE

RECORD DRAWINGS

A-8.2

21.02.3

Omni Architects
 Architecture, Architecture
 Civil Engineering
 Planning
 215 Madison Park Street
 Lexington, KY 40507
 (606) 252-6664 Fax: (606) 252-2266

JOHN F. WILLIAMS
 REGISTERED PROFESSIONAL ENGINEER
 COMMERCIAL
 NO. 10000
 EXP. 12/31/03