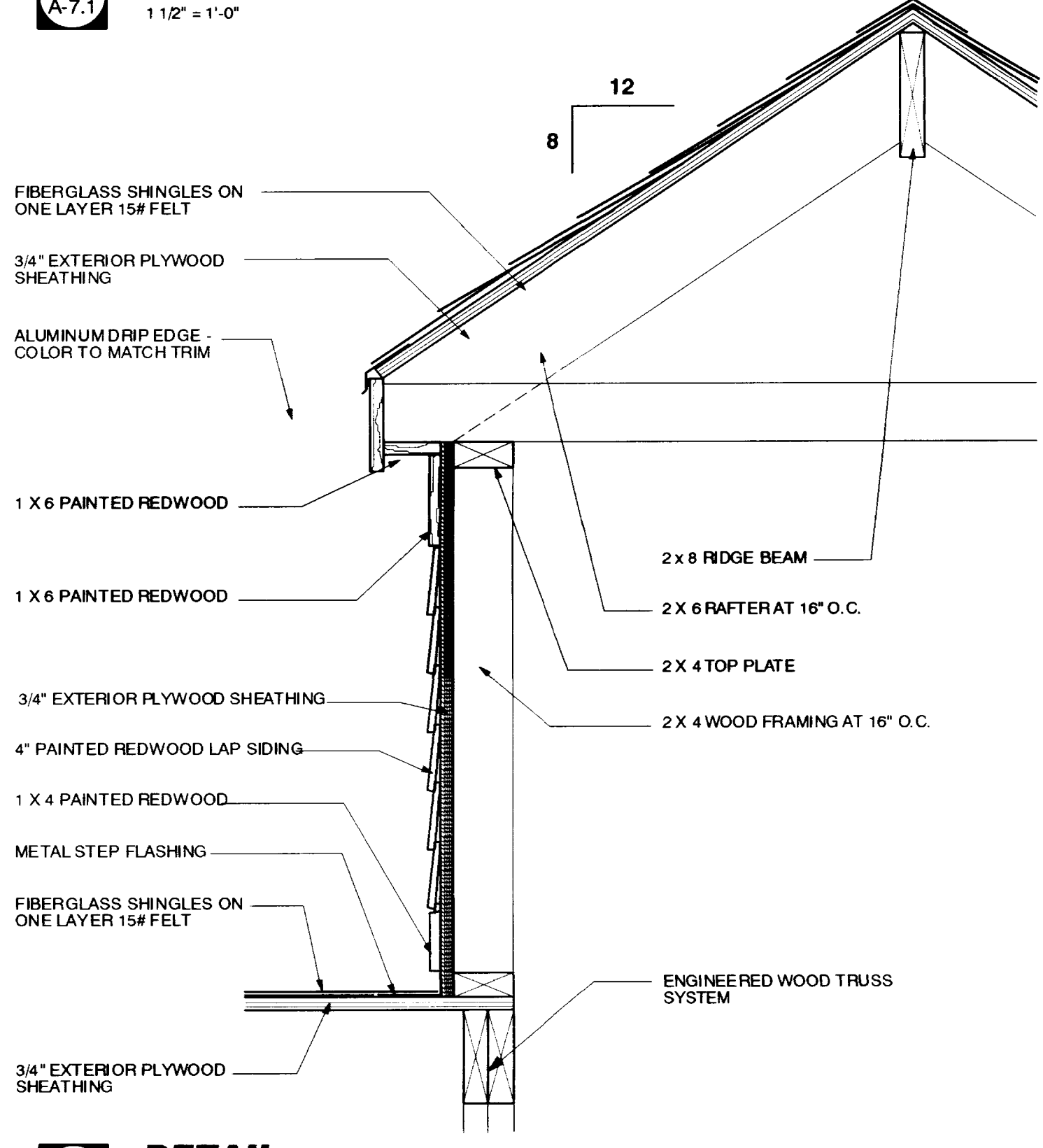
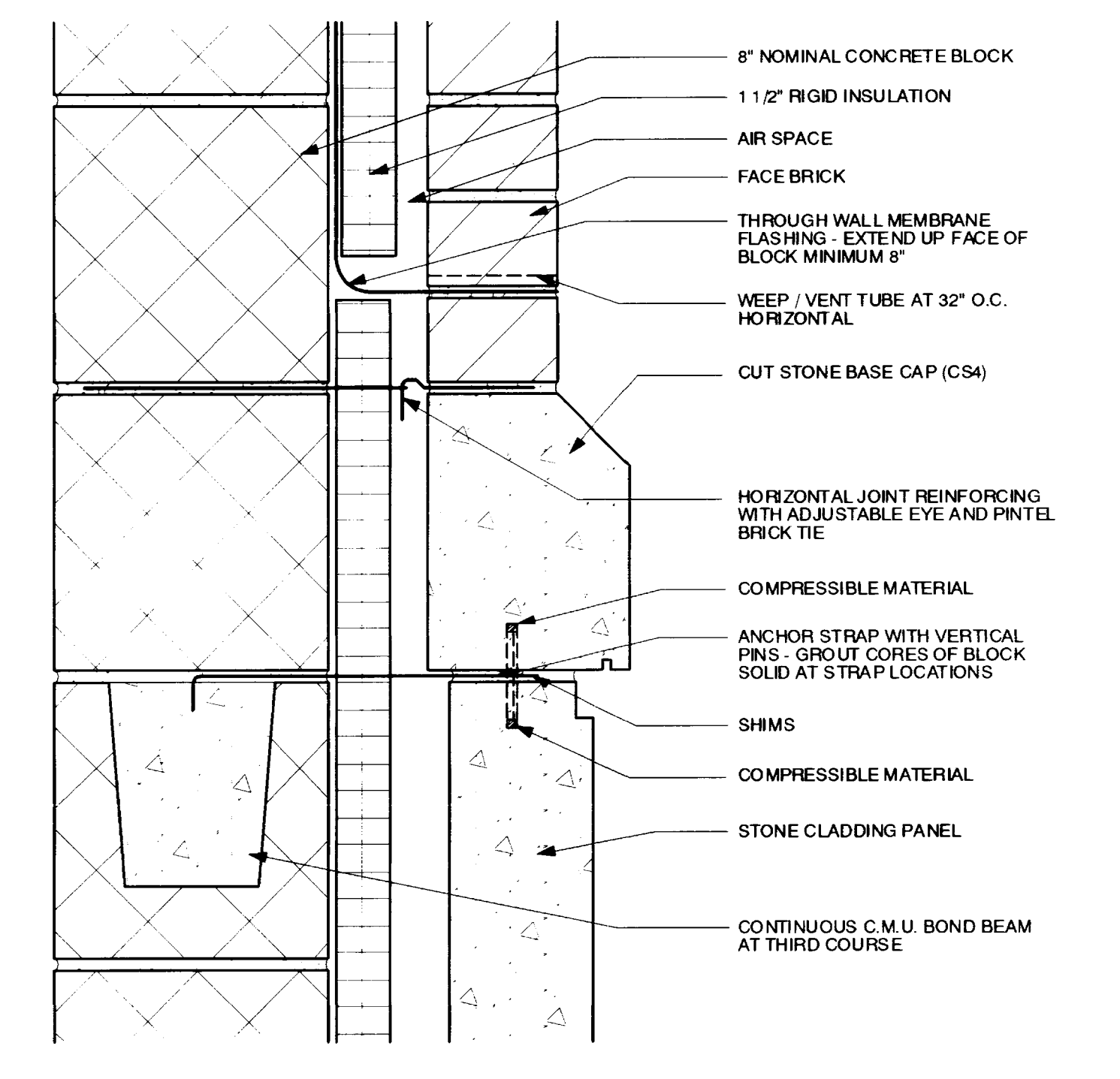


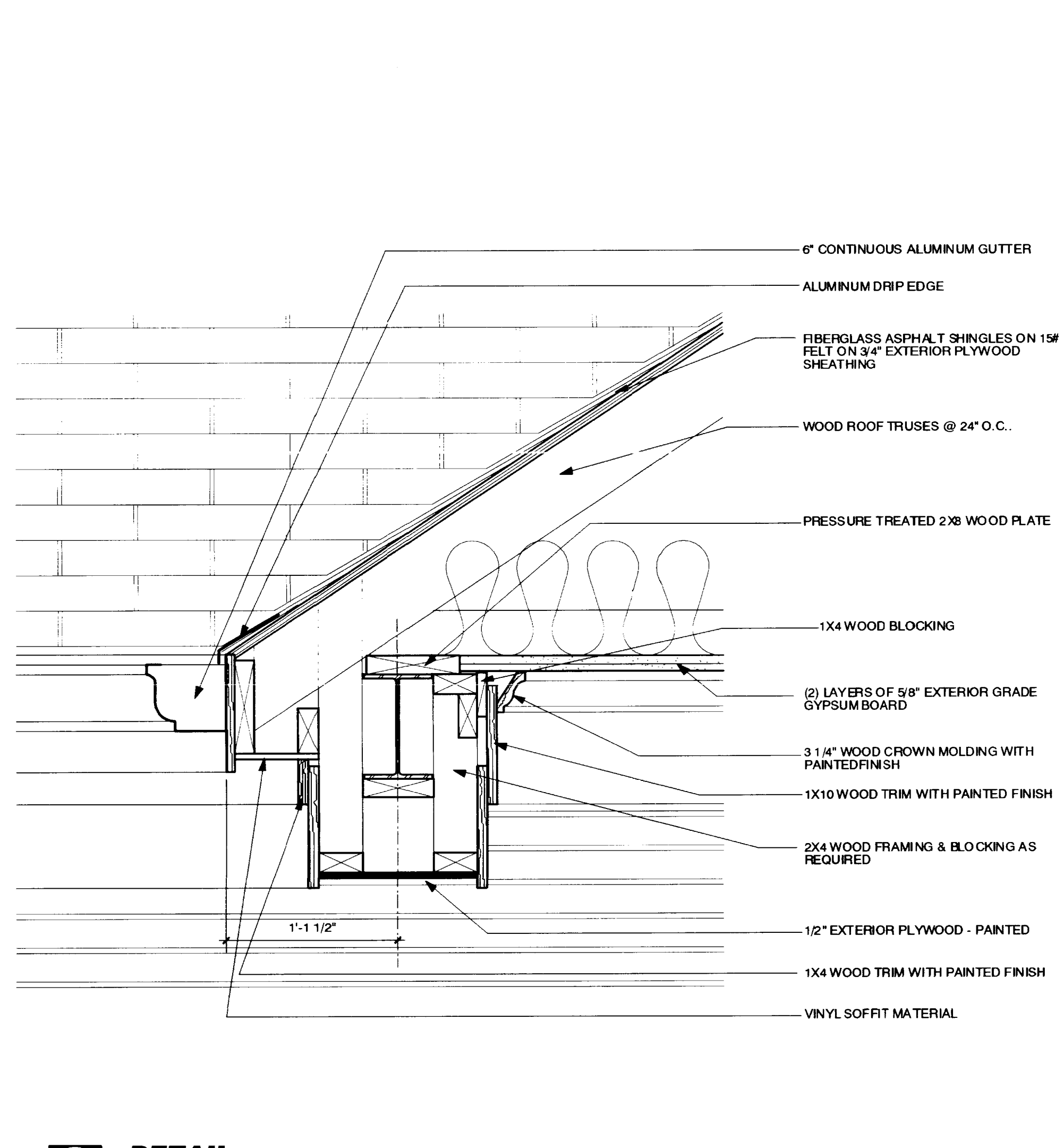
1 DETAIL
A-7.1
1 1/2" = 1'-0"



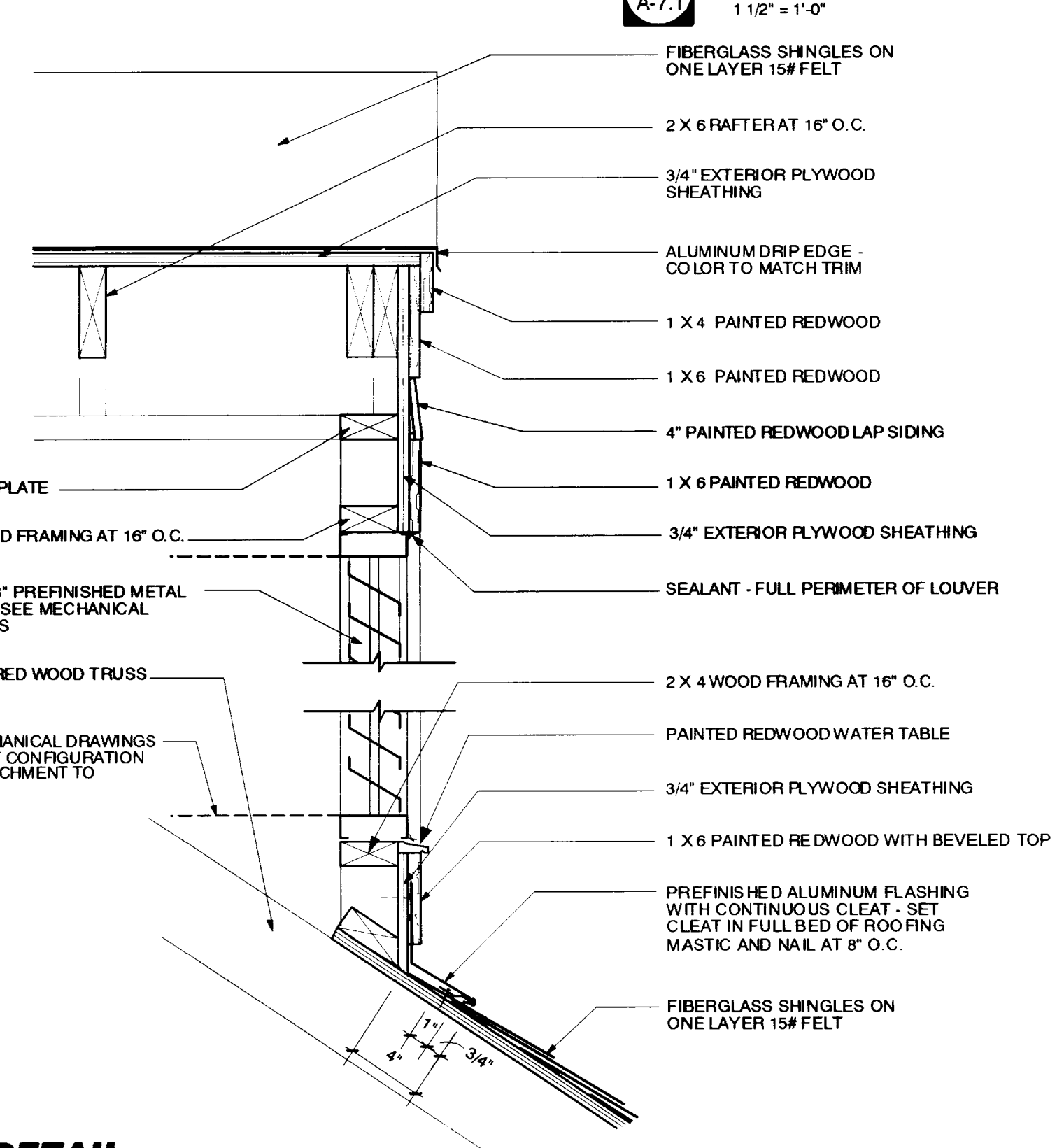
4 DETAIL
A-7.1
1 1/2" = 1'-0"



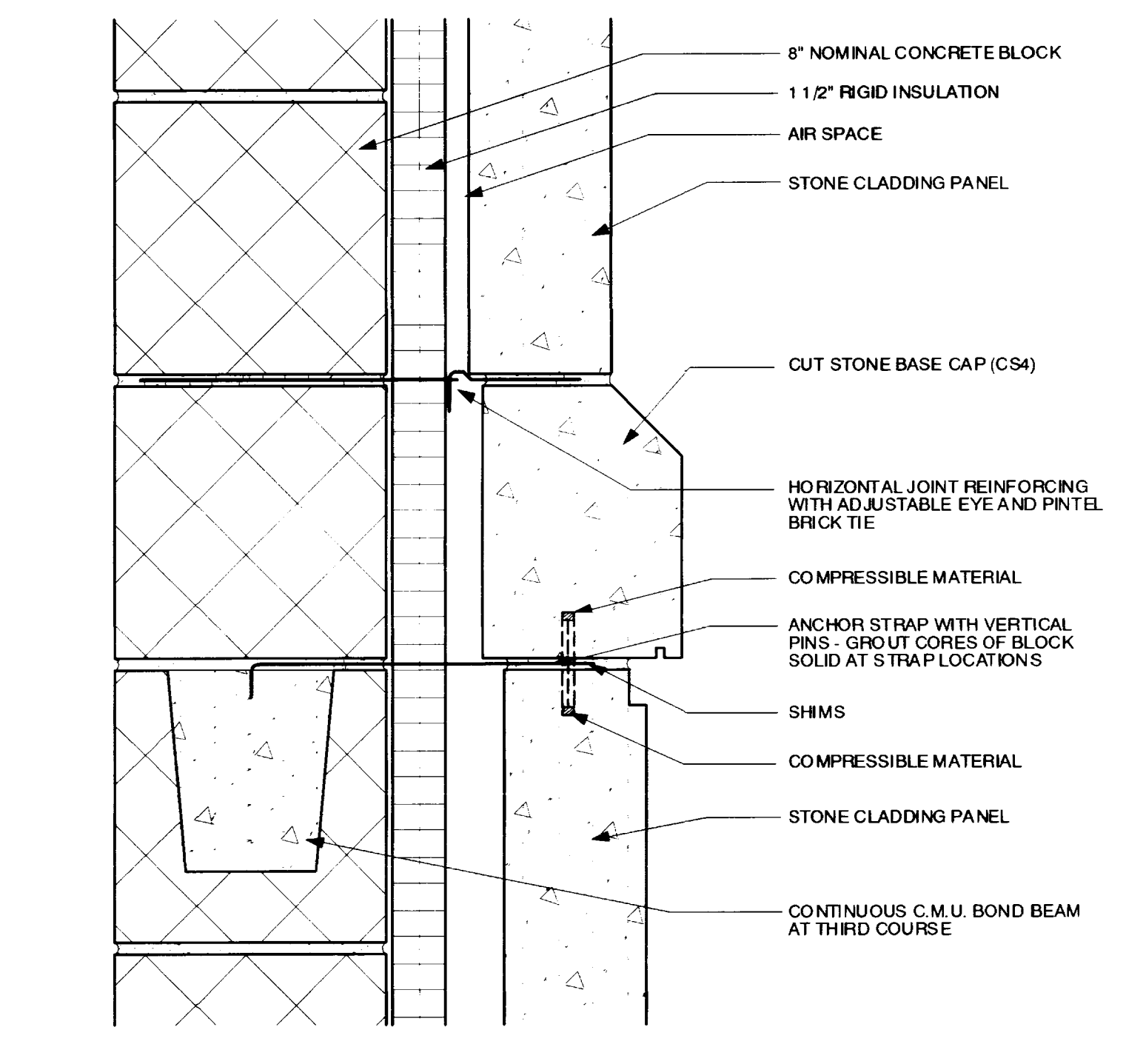
8 DETAIL
A-7.1
3" = 1'-0"



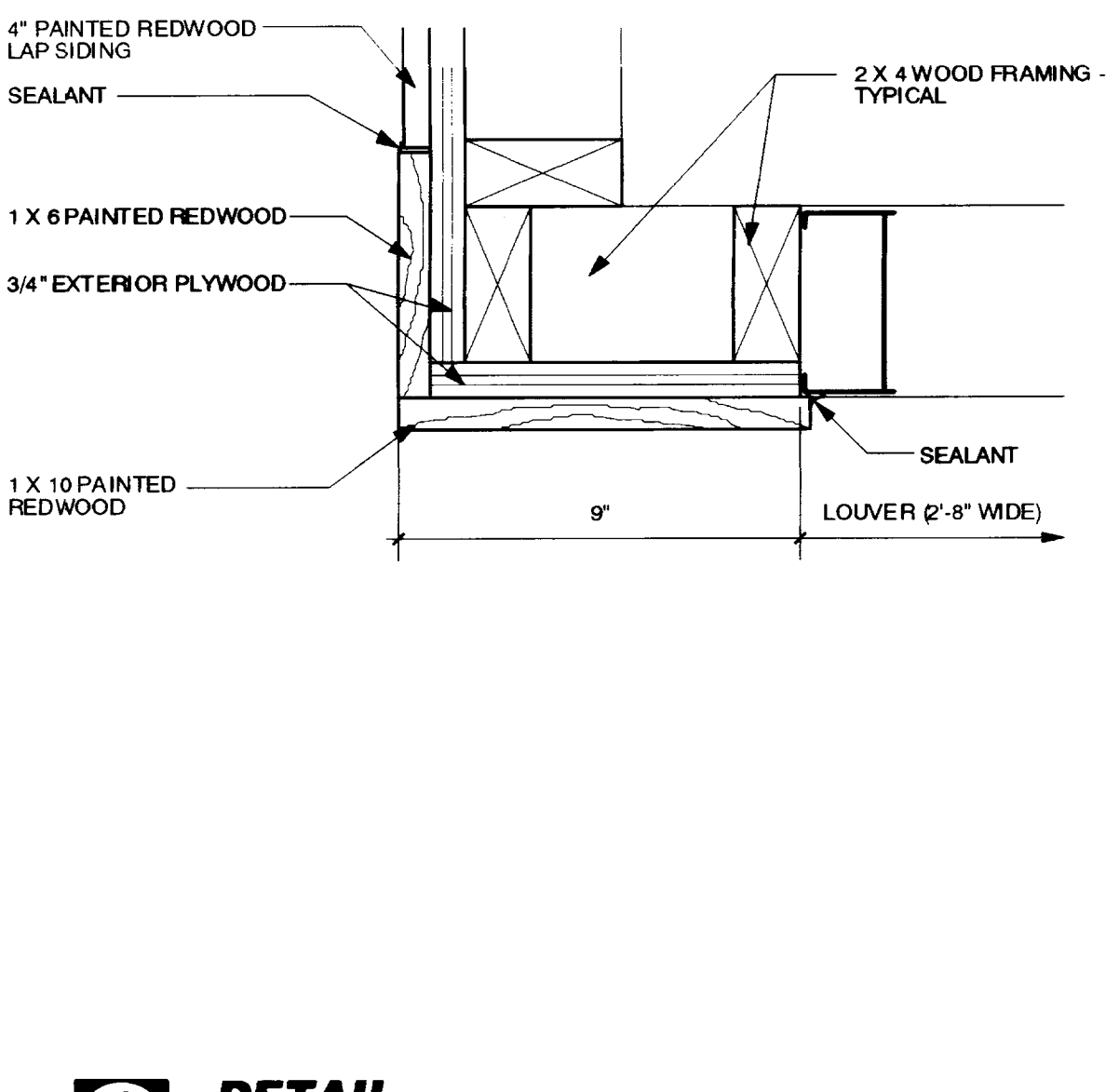
2 DETAIL
A-7.1
1 1/2" = 1'-0"



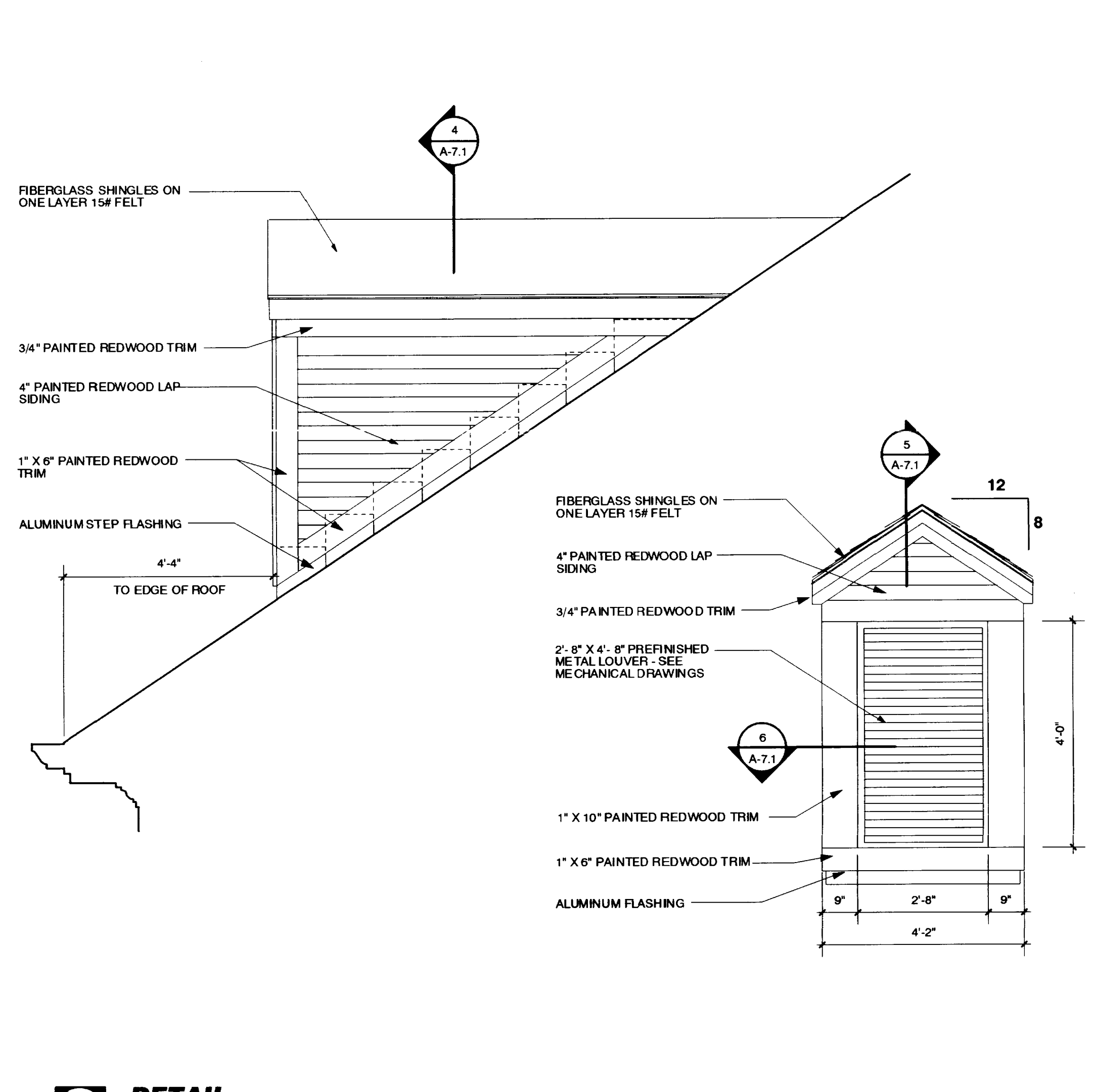
5 DETAIL
A-7.1
1 1/2" = 1'-0"



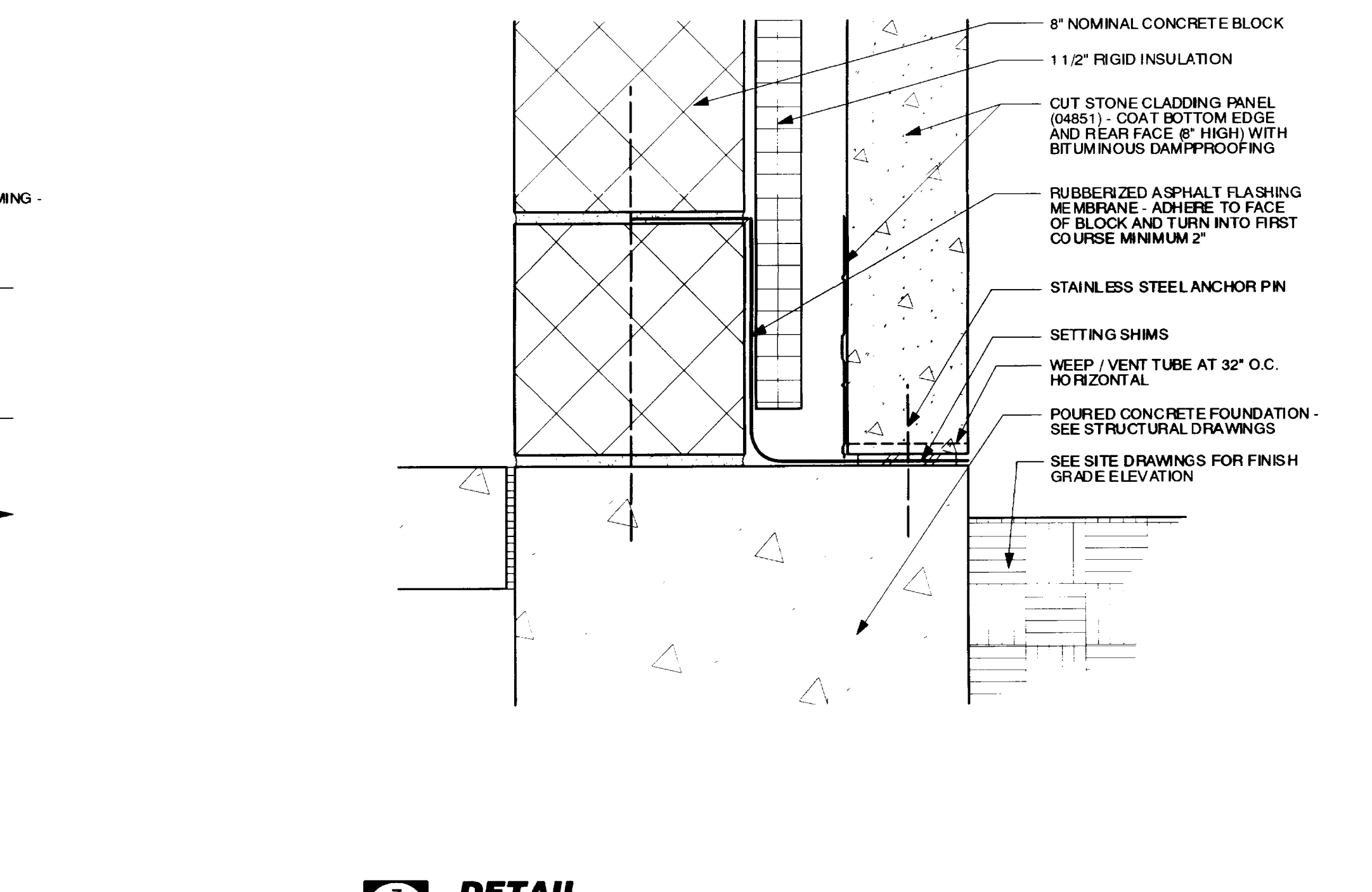
9 DETAIL
A-7.1
3" = 1'-0"



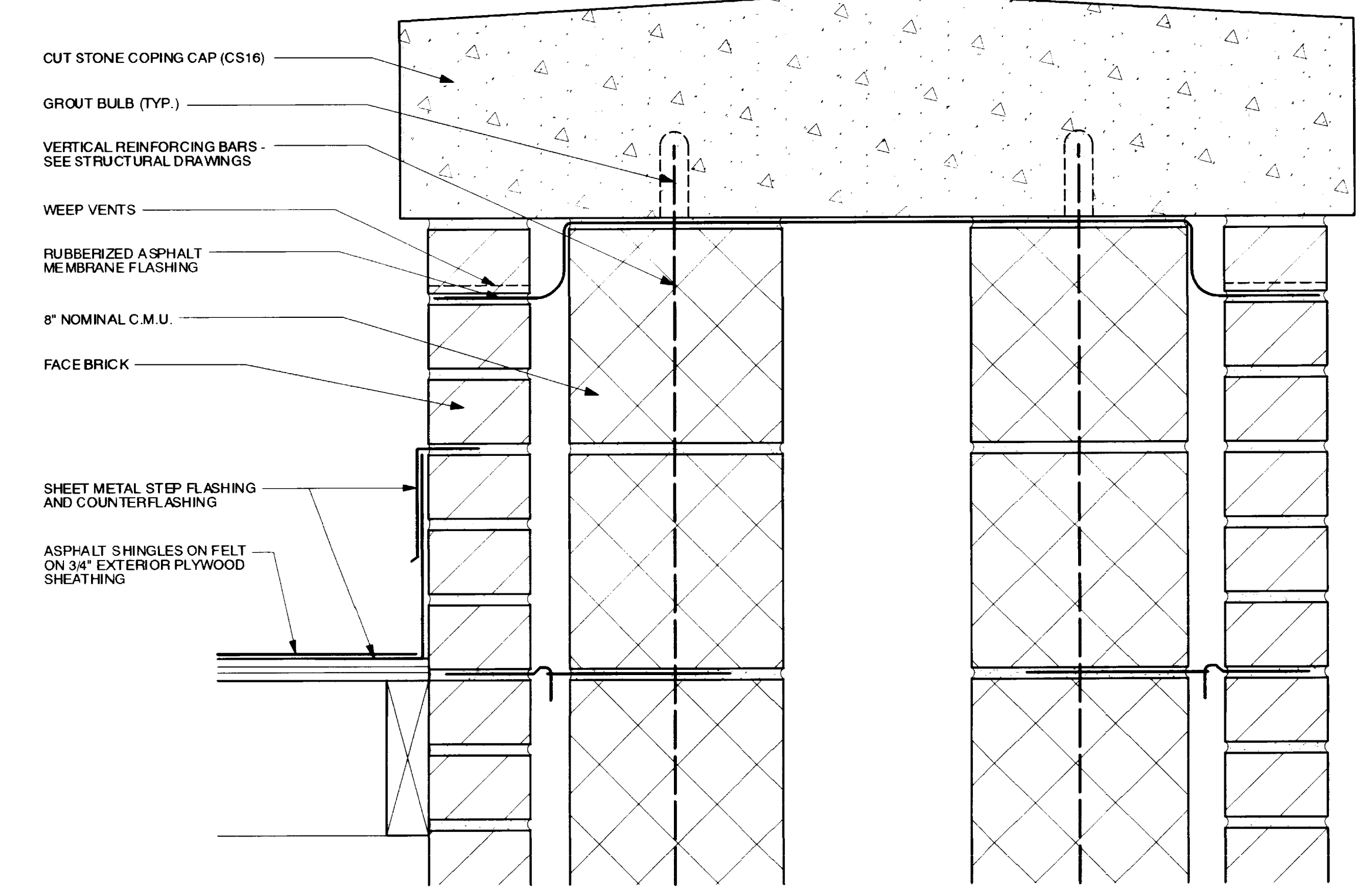
6 DETAIL
A-7.1
3" = 1'-0"



3 DETAIL
A-7.1
12" = 1'-0"



7 DETAIL
A-7.1
3" = 1'-0"



10 DETAIL
A-7.1
3" = 1'-0"

JOE No. 8913100 Date: August, 2000 Drawn By: GWW Checked: JFW Revisions:
This Drawing and Design shown thereon are the property of Omni Architects ©. Their reproduction, copying or other use of this Drawing without the written consent of Omni Architects is prohibited.

RECORD DRAWINGS
This drawing is a record drawing and is not to be used for construction. It is intended to show the final construction details as they were built. It is not to be used for any other purpose without the written consent of Omni Architects.

6-21-02 DATE
Omni Architects

A-7.1
Cab # Slot Document #
4.3 C-3 21.02.00

Omni Architects
212 North Upper Street
Lexington, KY 40507
(606) 252-2558 Fax: (606) 252-2558

Omni Architects
Civil Engineering
Interior Architecture
Lexington, KY
212 North Upper Street
Lexington, KY 40507
(606) 252-2558 Fax: (606) 252-2558