

**PLANTING NOTES:**

1. THE CONTRACTOR SHALL SUPPLY AND INSTALL ALL MATERIALS SHOWN, LABELED OR SCHEDULED ON PLAN.
2. ALL LANDSCAPE MATERIALS SHALL BE APPROVED BY THE OWNER PRIOR TO INSTALLATION.
3. THE CONTRACTOR SHALL STAKE OUT THE GROUND LOCATIONS OF ALL PLANTS AND EDGES OF ALL PLANTING BEDS AND OBTAIN APPROVAL BY OWNER PRIOR TO PROCEEDING. FINAL GRADES SHALL BE APPROVED PRIOR TO PLANTING.
4. AFTER THE AREAS TO BE SODDED OR PLANTED HAVE BEEN BROUGHT TO THE REQUIRED GRADE, THE CONTRACTOR SHALL TRIM, CLEAN-UP AND BRING TOPSOIL TO A FRIABLE CONDITION BY NARROWING OR OTHERWISE LOOSENING AND MIXING IT AND RAKING AS NECESSARY.
5. SOD ALL AREAS OF THE DISTURBED GRADE, EXCEPT AREAS TO BE PLANTED.
6. FERTILIZER SHALL BE COMMERCIAL GRADE 10-10-10 APPLIED AT A RATE OF 25 LBS. PER 1000 S.F. (FOR SOD AREAS)
7. SOD ALL SLOPES AND ANCHOR ON SLOPES OF 5:1 OR GREATER WITH 1" X 1" X 8" PLACE SOD WOOD PEGS OR STEEL PINS, ONE DIRECTION PERPENDICULAR TO SLOPE.
8. WATER SOD THOROUGHLY WITH FINE SPRAY IMMEDIATELY AFTER PLANTING.
9. FERTILIZE SOD AREA PRIOR TO SODDING WITH COMMERCIAL GRADE FERTILIZER.
10. ANY CHANGE TO PLANT SPECIES OR PLANT LOCATION SHALL BE UNACCEPTABLE WITHOUT SPECIFIC PRIOR APPROVAL OF THE ARCHITECT.

**SODDING NOTES:**

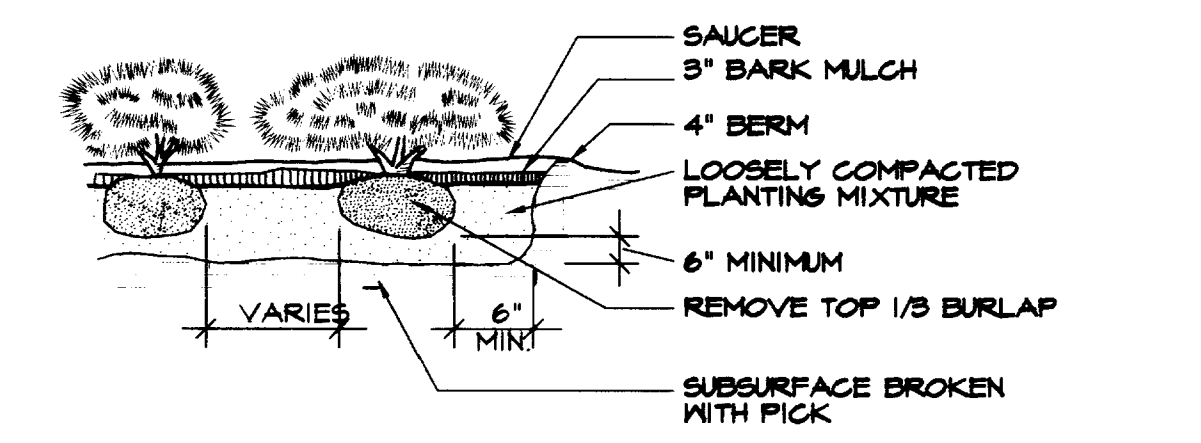
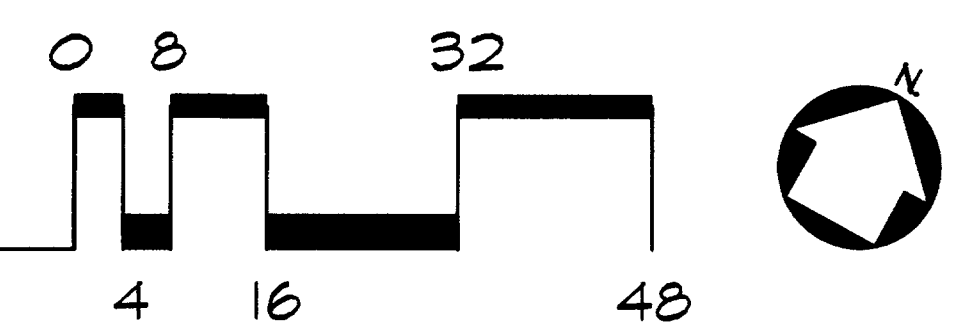
1. SOD OR SEED ALL AREAS OF DISTURBED GRADE EXCEPT AREAS TO BE MULCHED. SOD SHALL BE TWO VARIETIES OF KENTUCKY BLUEGRASS (POA PRATENSIS).
2. LAY SOD WITHIN 36 HOURS OF STRIPPING. DO NOT PLANT DORMANT SOD OR IF GROUND IS FROZEN.
3. LAY SOD TO FORM A SOLID MASS WITH TIGHTLY FITTED JOINTS. BUTT ENDS AND DO NOT OVERLAP SIDES OF SOD STRIPS; STAGGER STRIPS TO OFFSET JOINTS IN MINOR CRACKS BETWEEN ADJACENT COURSES. WORK SIFTED SOIL INTO PIECES OF SOD. REMOVE EXCESS TO AVOID SMOTHERING OF ADJACENT GRASS. PLACE SOD STRIPS IN DIRECTION PERPENDICULAR TO SLOPE.
4. ANCHOR SOD ON SLOPES OVER 5:1 WITH 1"X1"X8" WOOD PEGS OR STEEL PINS TO PREVENT SLIPPAGE.
5. WATER SOD THOROUGHLY WITH A FINE SPRAY IMMEDIATELY AFTER PLANTING.
6. SEE SPECIFICATIONS FOR FURTHER SODDING INFORMATION.

**PLANT LIST**

KEY	LATIN NAME	COMMON NAME	QTY.	SIZE
AA	Amelanchier arborea	Downy Serviceberry	7	8'-10' hgt. full-stem on corners
MY	Magnolia virginiana	Sweetbay Magnolia	4	12'-14' hgt. full
TC	Thuja canadensis	Eastern Hemlock	3	10'-12' hgt. full
B6	Buxus x 'Green Velvet'	Green Velvet Boxwood	45	12"-24" hgt. 12" ball dia.
BT	Berberis thunbergii 'A. Nana'	Grassm Pluggy Barberry	36	No. 5 container
DL	Hemerocallis species	Day Lilly cultivars	524	No. 1 container - use Catherine Woodbury, Chicago series Hyperion, Anzac cultivars
FC	Forsythia cortusoides 'Gold Tide'	Gold Tide Forsythia	4	12"-24" hgt. 12" ball dia.
HQ	Hydrangea quercifolia	Oakleaf Hydrangea	37	5 gal. container, # 36" o.c.
IS	Ilex gallica 'Nordic'	Nordic Inkberry	35	5 gal. container, # 36" o.c.
IM	Ilex meserveae 'Blue Prince'	Blue Prince Holly	24	3 gal. container, # 36" o.c.
IP	Ilex meserveae 'Blue Princess'	Blue Princess Holly	45	3 gal. container, # 36" o.c.
MS	Miscanthus sinensis	Miscanthus	4	5 gal. container, # 36" o.c.
VJ	Viburnum x Juddi	Juddi Viburnum	20	24"-30" hgt. 12" ball dia.
VM	Vinca minor 'Bonnie'	Bonnie Vinca	1504	2 1/4" peat pots # 18" o.c.

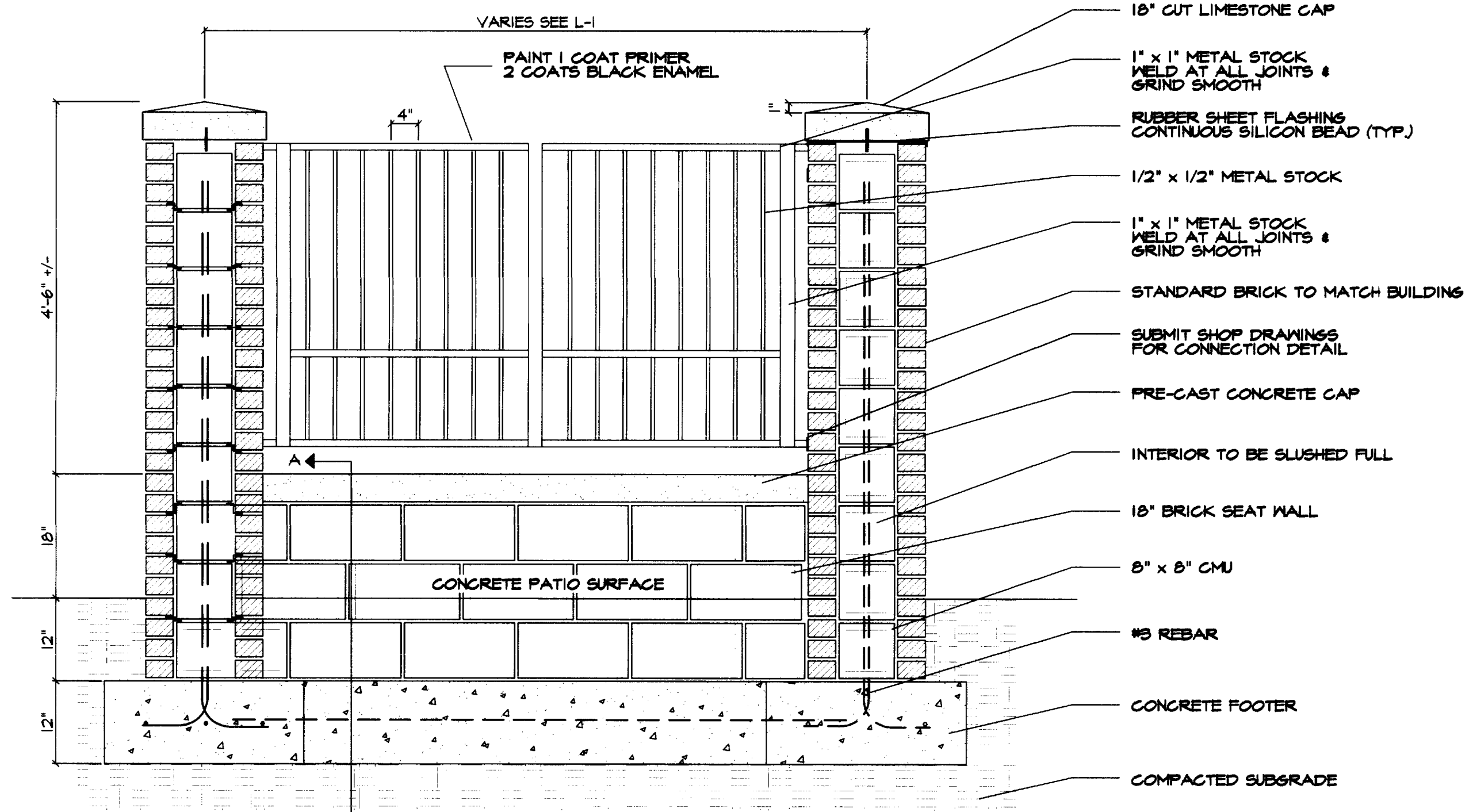
**REVISED LANDSCAPE PLAN**

SCALE: 1"=16'



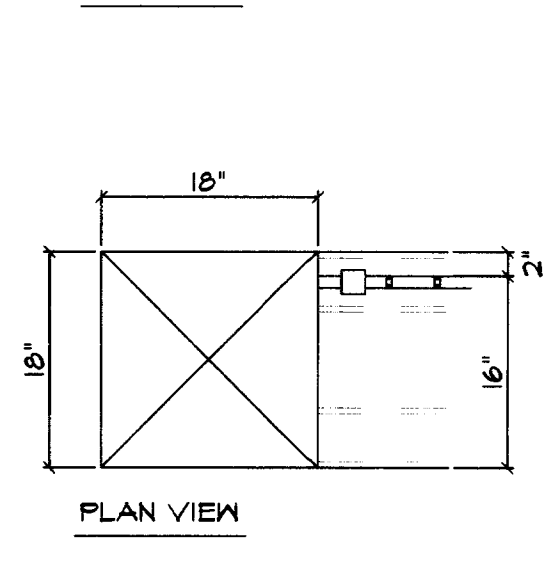
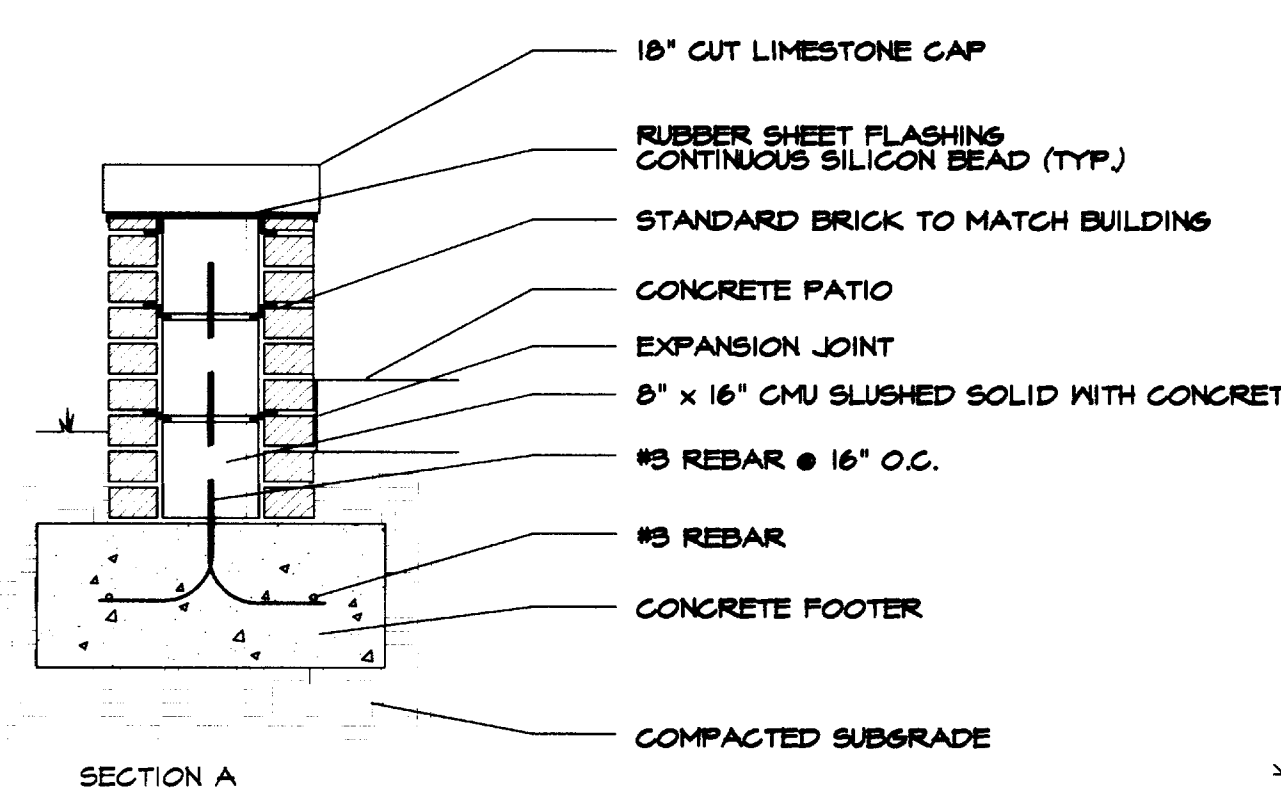
**SHRUB PLANTING DETAIL**

N.T.S.



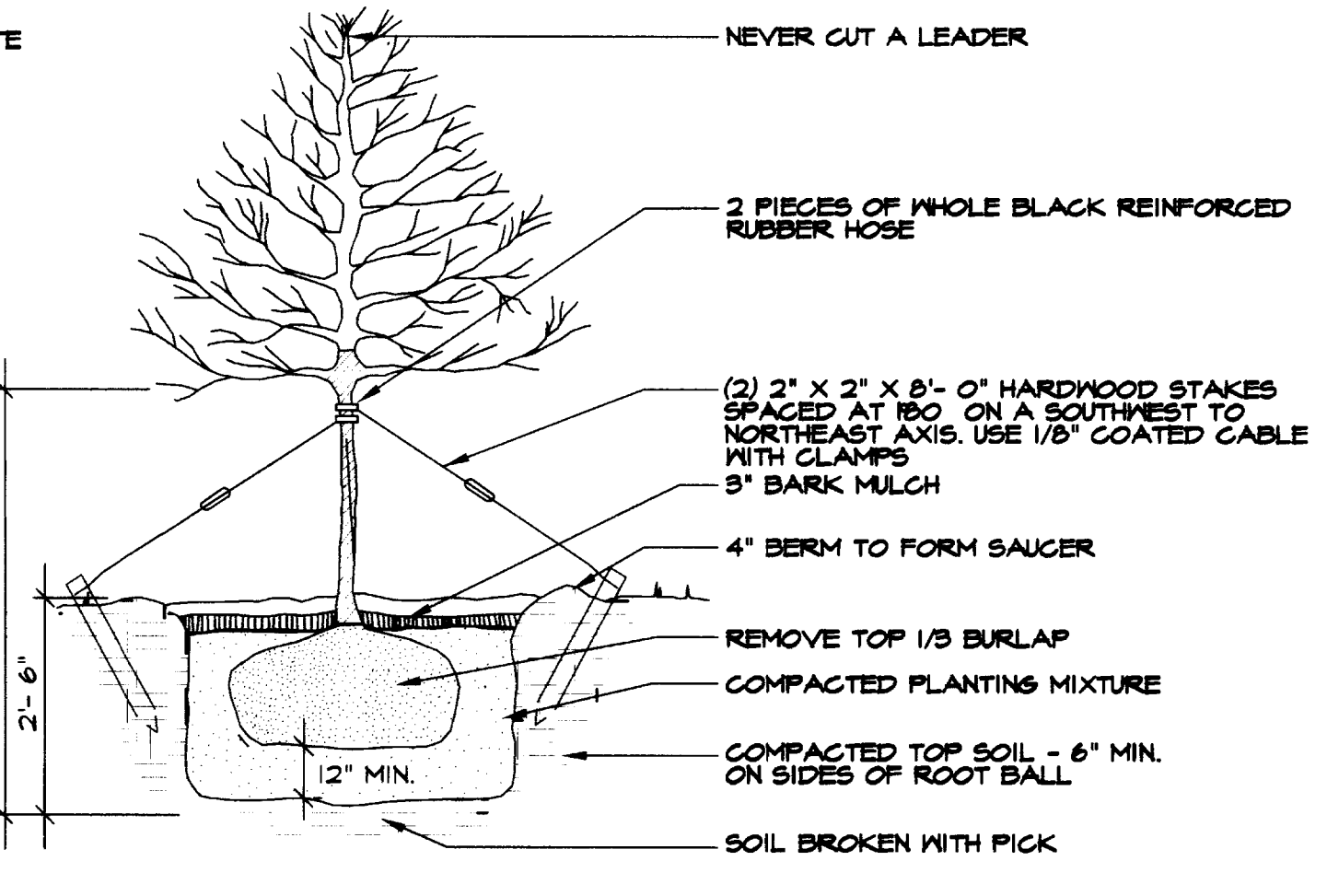
**BRICK COLUMN AND SEAT WALL**

N.T.S.



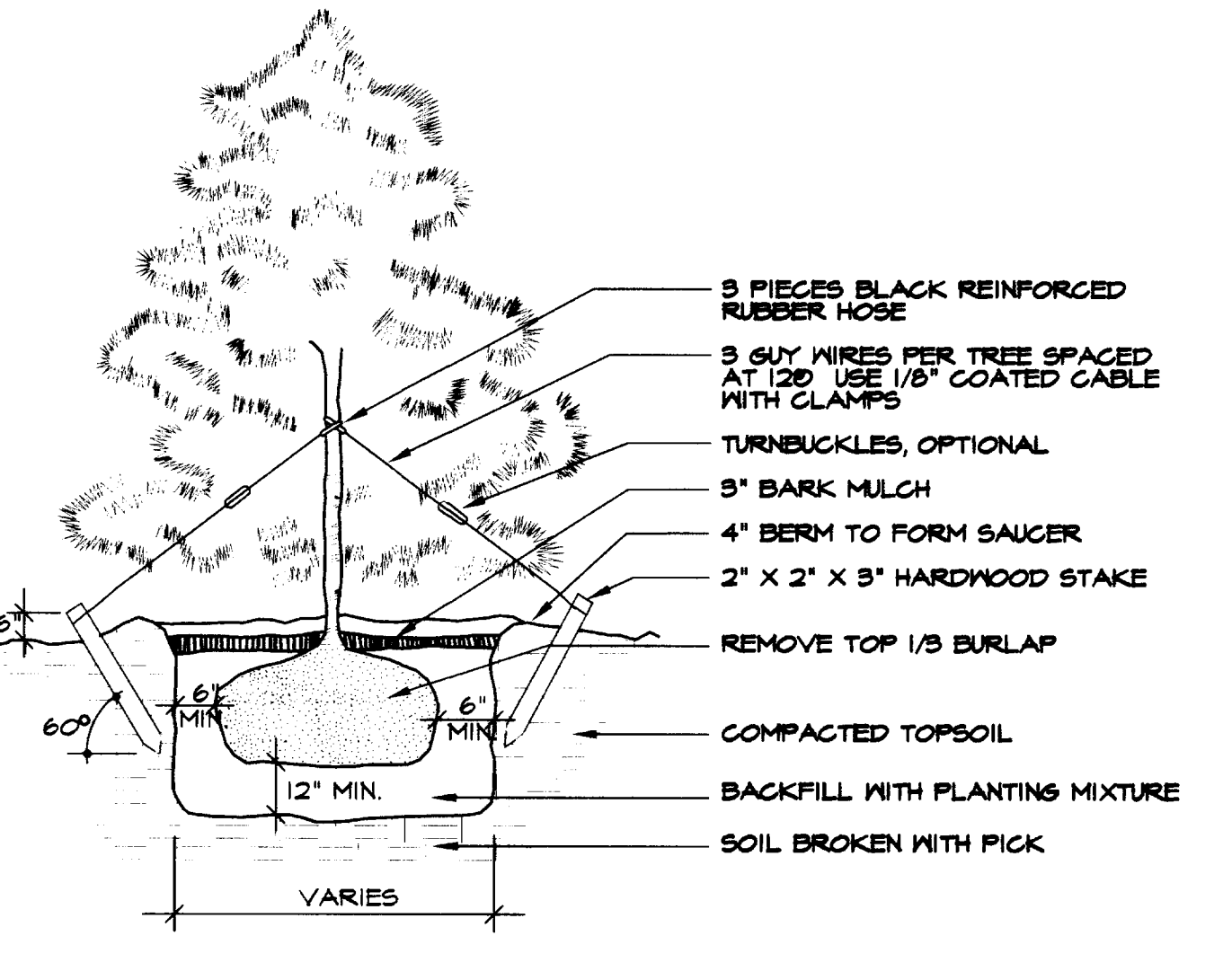
**SECTION A**

N.T.S.



**DECIDUOUS TREE PLANTING DETAIL**

N.T.S.



**CONIFEROUS TREE PLANTING DETAIL**

N.T.S.

Job No. Omnia-413 Date: 8/19/02 Drawn By: ASP Checked: MCA Revisions: This Drawing and Design shown herein are the property of Omnia Architects. The reproduction, copying or other use of this drawing without the written consent of Omnia Architects is prohibited.

**The Landplan Group**  
Landscape Architects and Planners  
1576 North Bracken  
Lexington, Kentucky 40507  
859-243-0557  
http://www.landplangroup.com/

**DAVID LE WENTZ**  
REGISTERED ARCHITECT

Architecture  
Civil Engineering  
Interior

212 North Kypp Road, Ste 501  
Lexington, KY 40503  
(855) 252-6664 Fax: (859) 253-2358

**Omnia Architects**

**RECORD DRAWING**  
DATE: AUGUST 2002

**L-3**