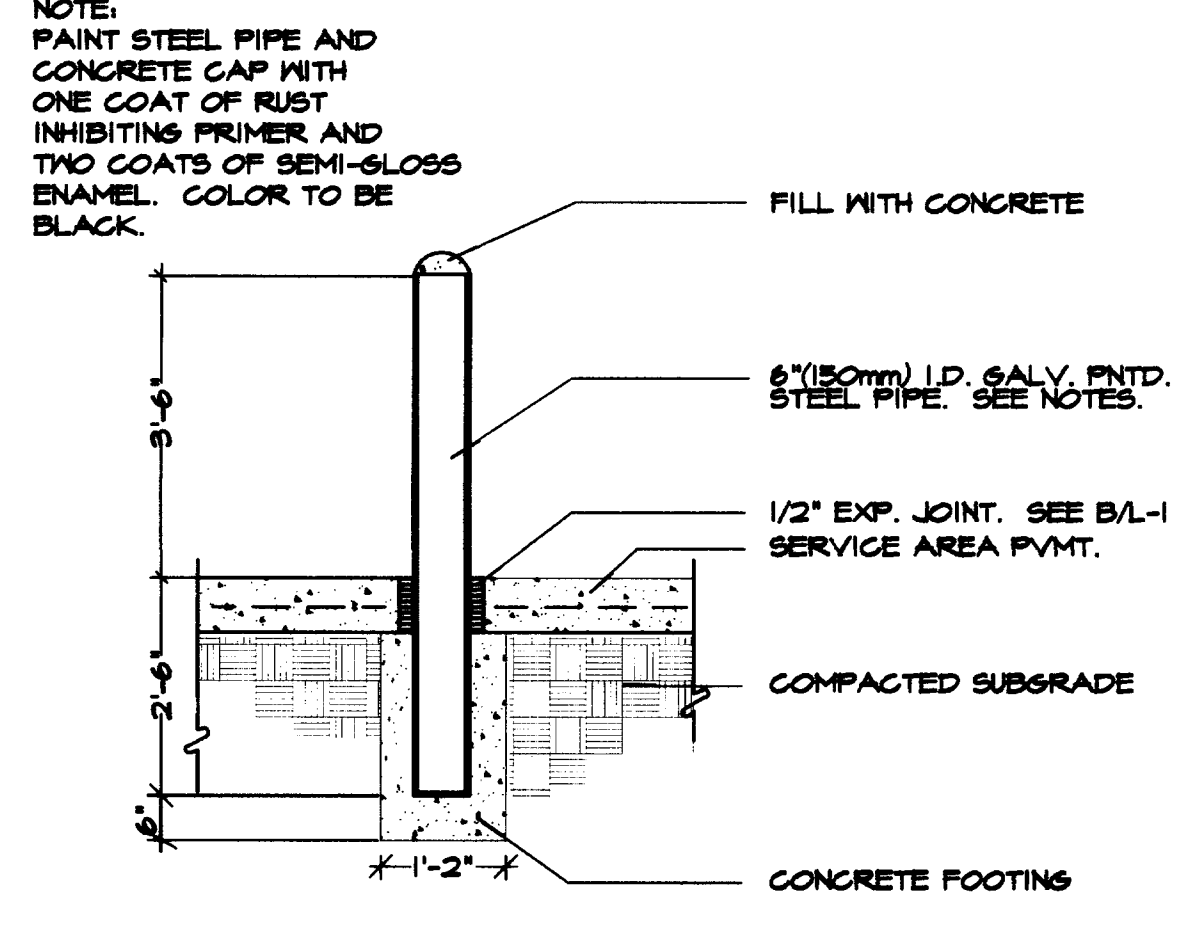
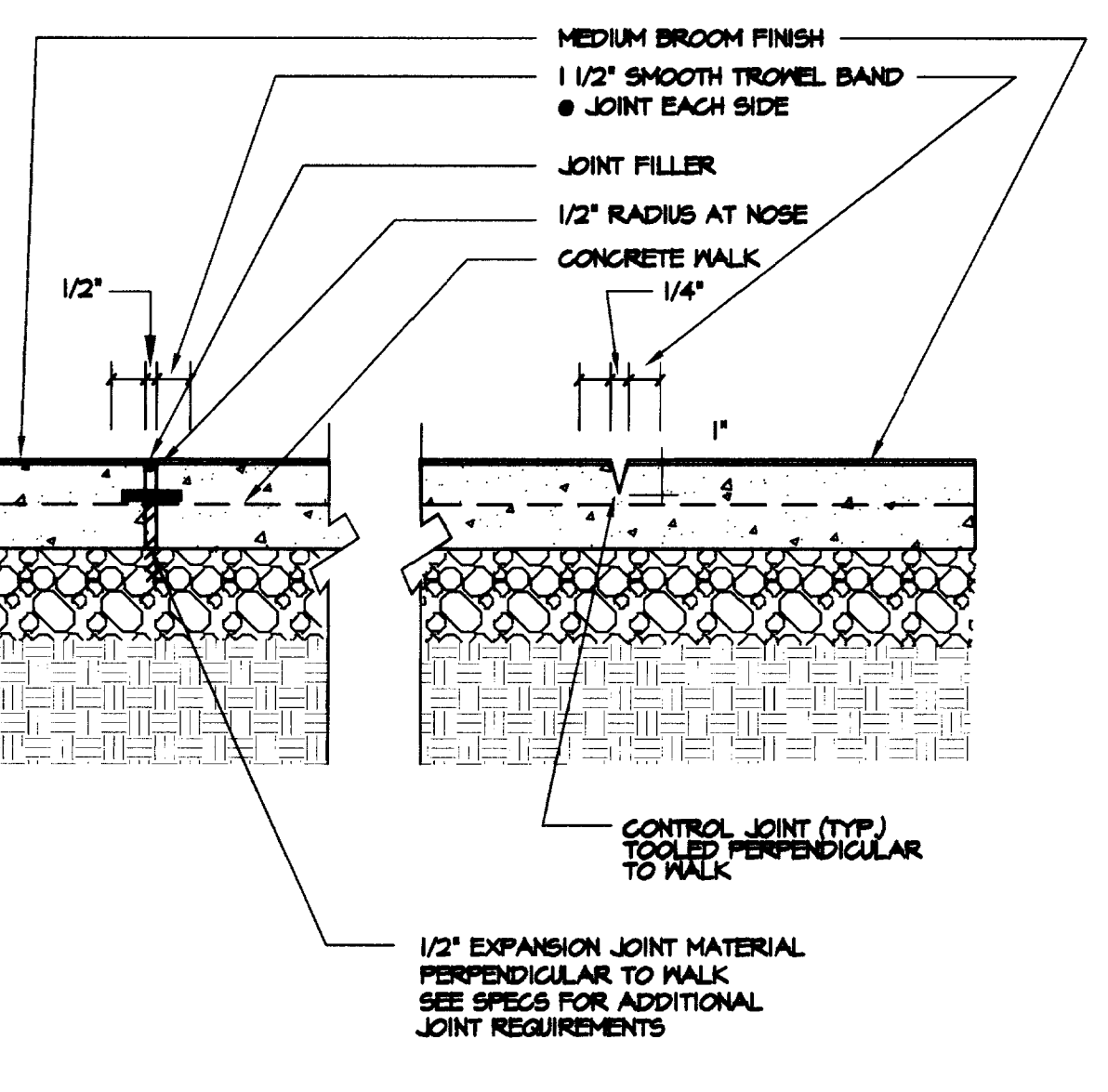


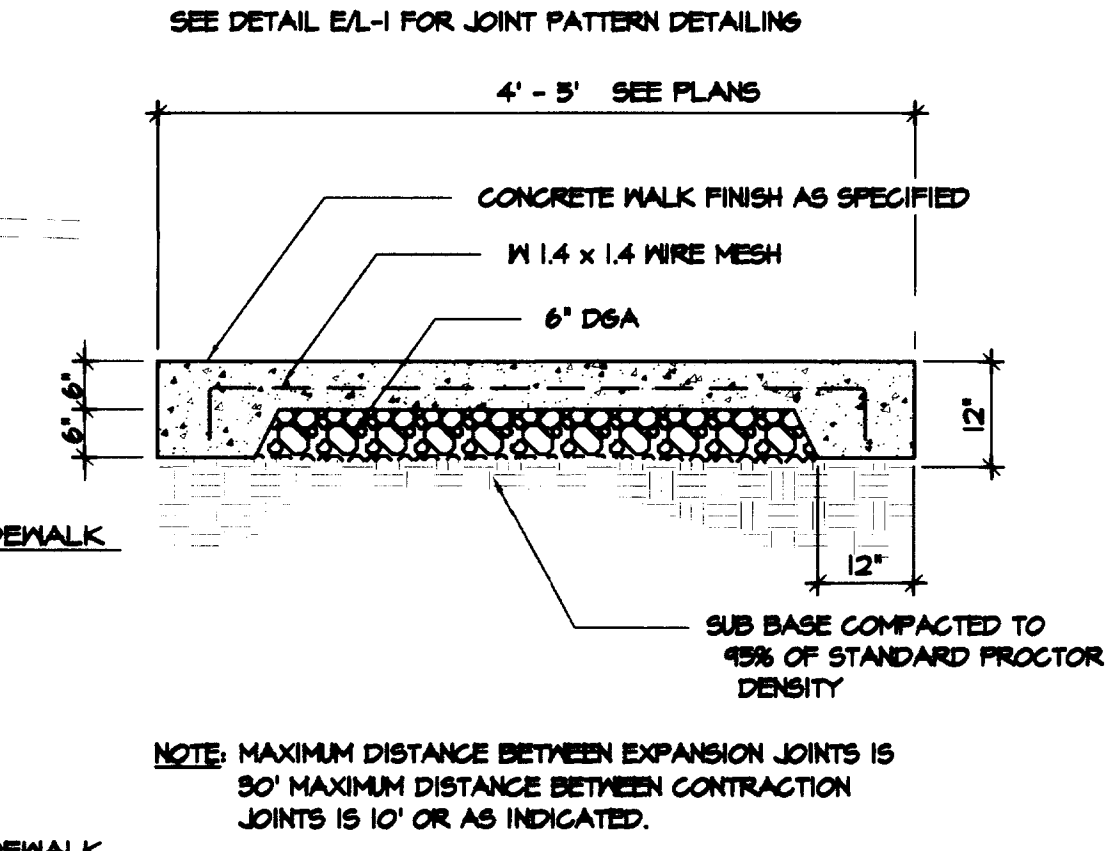
- LAYOUT NOTES:**
- P.O.B. #1 IS BASED ON THE FACE OF THE NORTHERN CURB OF THE SITE. P.O.B. #2 IS BASED ON THE FACE OF THE CURB ON COLUMBIA AVENUE. P.O.B. #3 IS BASED ON THE NW CORNER OF THE DELTA GAMMA HOUSE.
 - THE CONTRACTOR SHALL OBTAIN ALL NECESSARY PERMITS AND LICENSES FROM THE PROPER AUTHORITIES BEFORE BEGINNING ANY WORK WITH THE RIGHTS OF MAY OF THE SITE.
 - ALL ANGLES SHALL BE 90° UNLESS OTHERWISE NOTED.
 - THE CONTRACTOR IS RESPONSIBLE FOR CONTACTING ALL INVOLVED UTILITY COMPANIES AND COORDINATING WITH THEM ALL CONSTRUCTION ACTIVITIES.
 - SEE SHEET L-5 FOR ALL STORM SEWER SYSTEMS AND STRUCTURES.
 - CONTRACTOR SHALL VERIFY ALL ON SITE UTILITIES PRIOR TO ACTUAL CONSTRUCTION ACTIVITY.



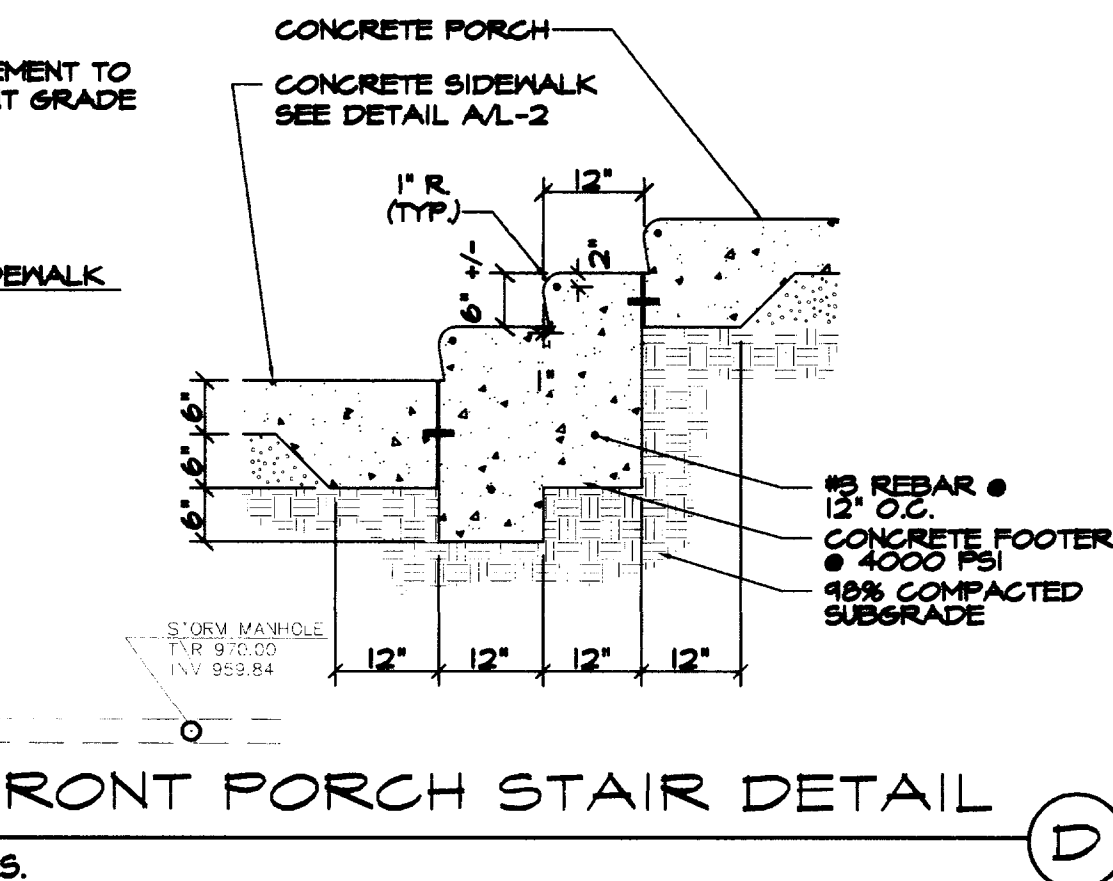
STEEL BOLLARD
N.T.S.



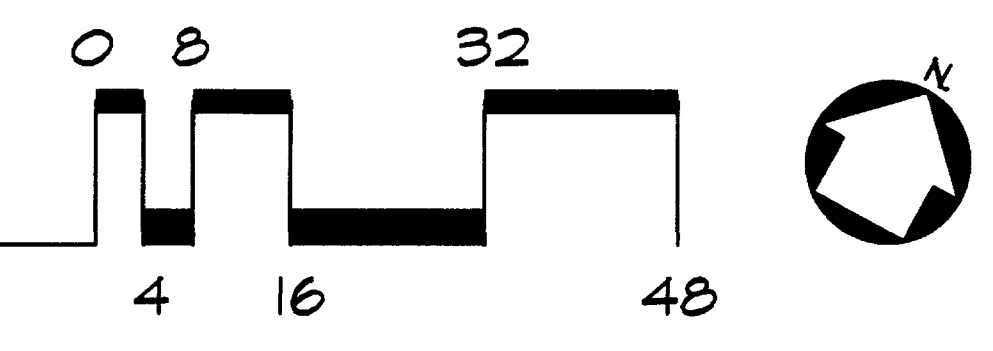
EXPANSION/CONTRACTION JOINT
N.T.S.



CONCRETE SIDEWALK
N.T.S.

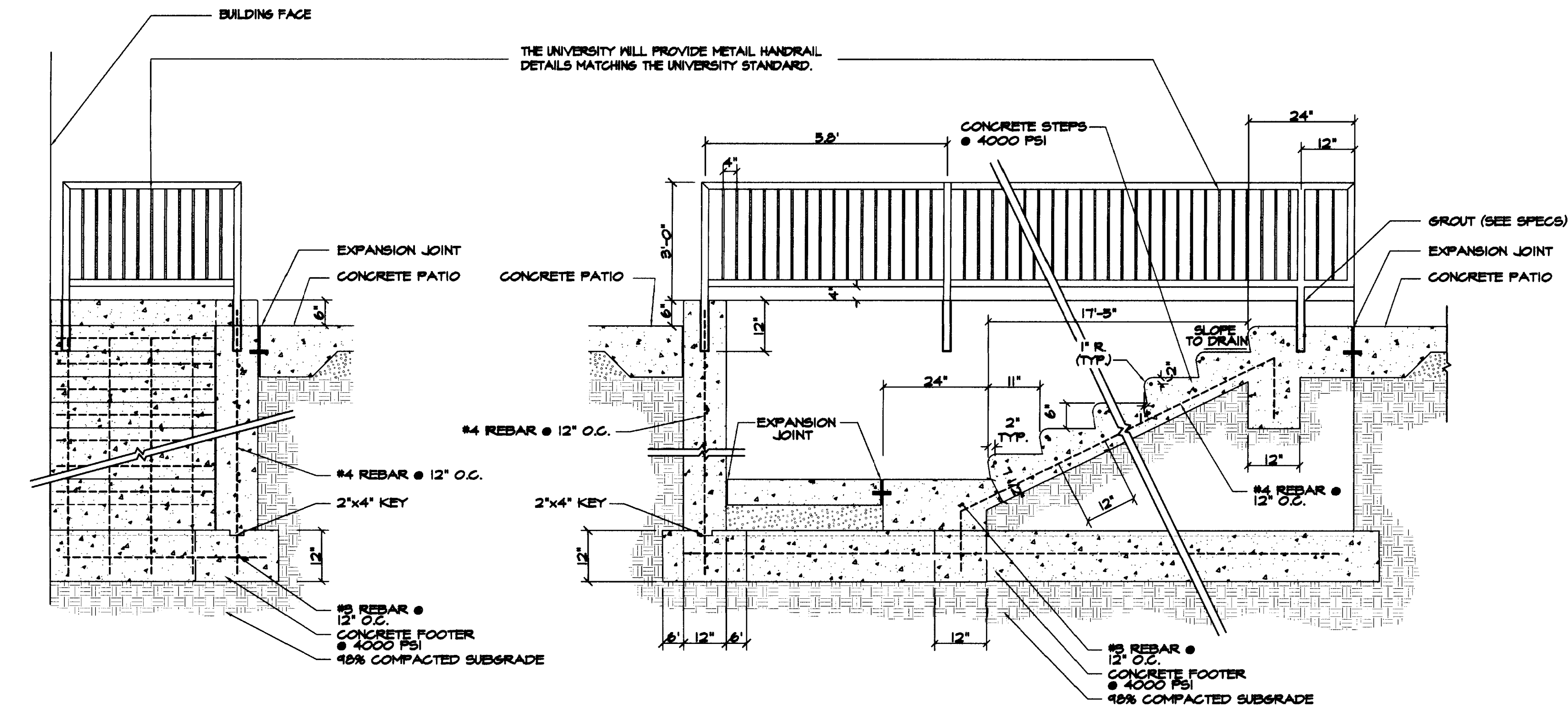


FRONT PORCH STAIR DETAIL
N.T.S.

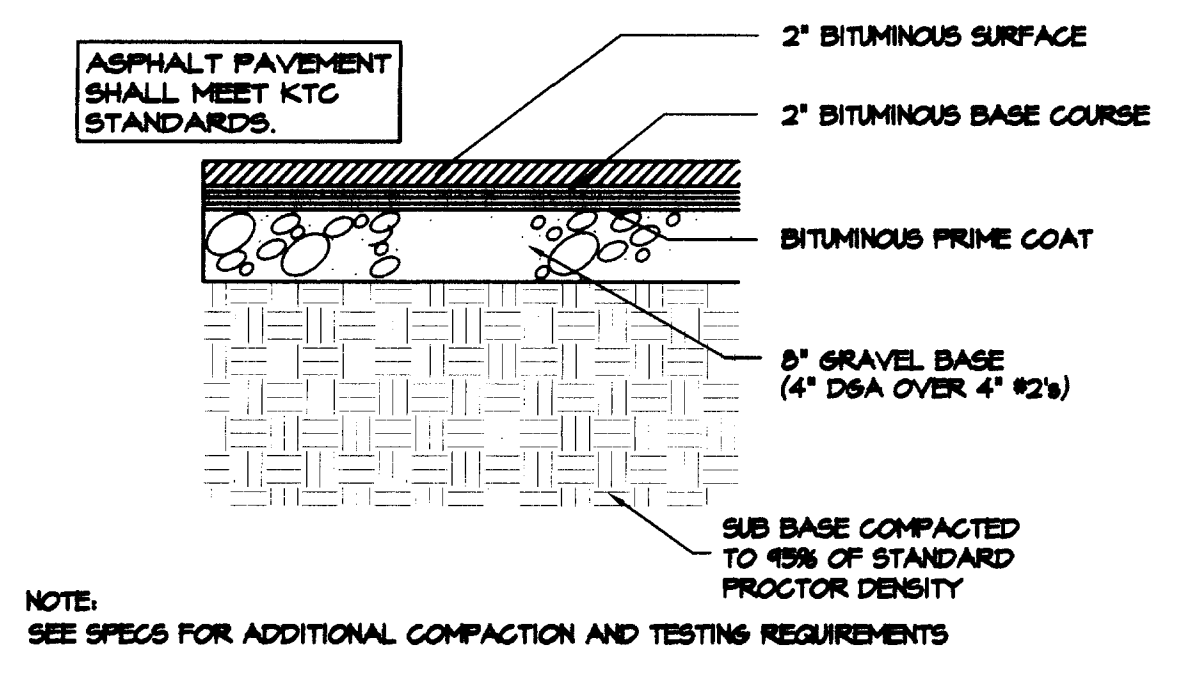


LAYOUT PLAN

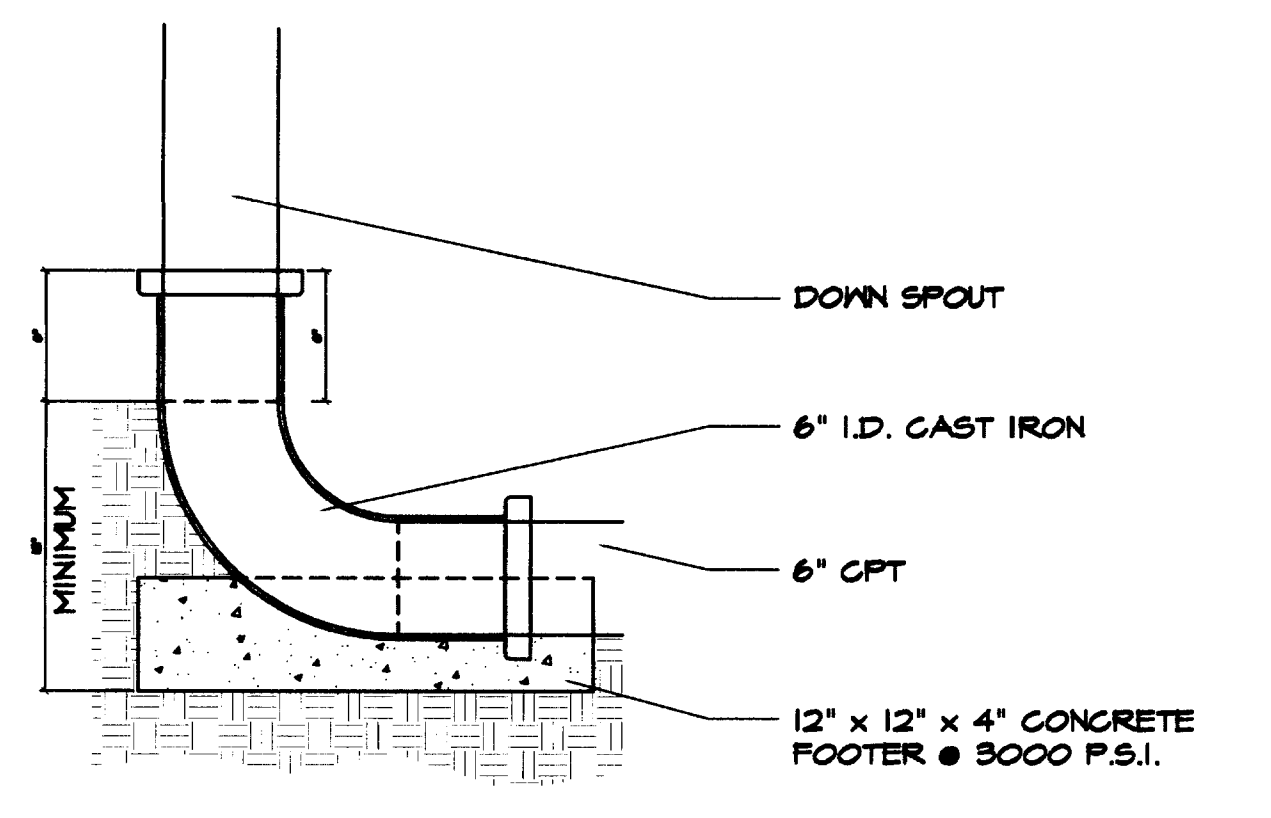
SCALE: 1"=16'



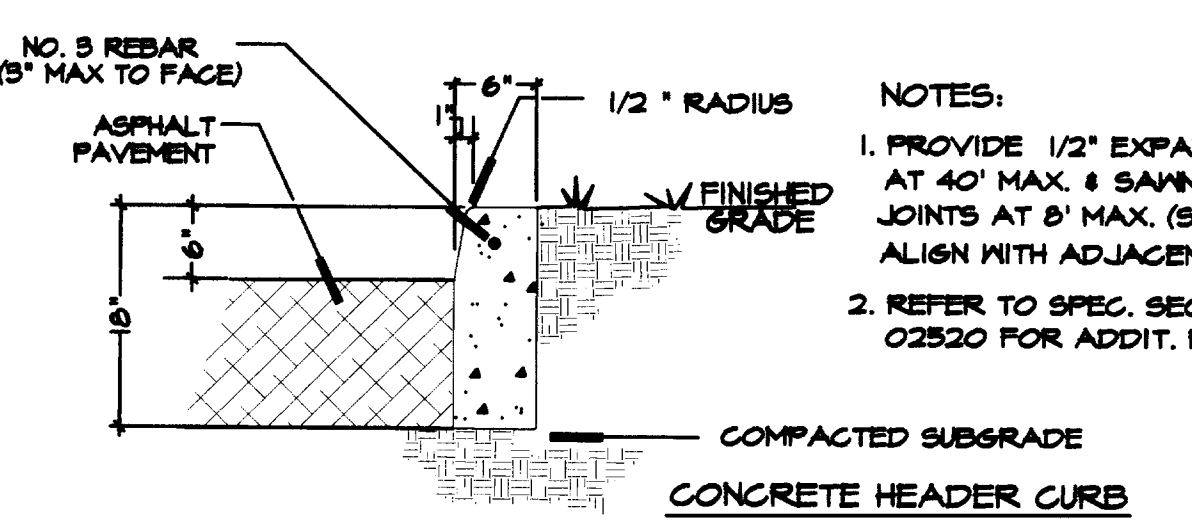
BASEMENT STAIR DETAIL
N.T.S.



VEHICULAR ASPHALT PAVING
N.T.S.



BOOT DETAIL
N.T.S.



CONCRETE HEADER CURB / INTEGRAL CURB & WALK
N.T.S.