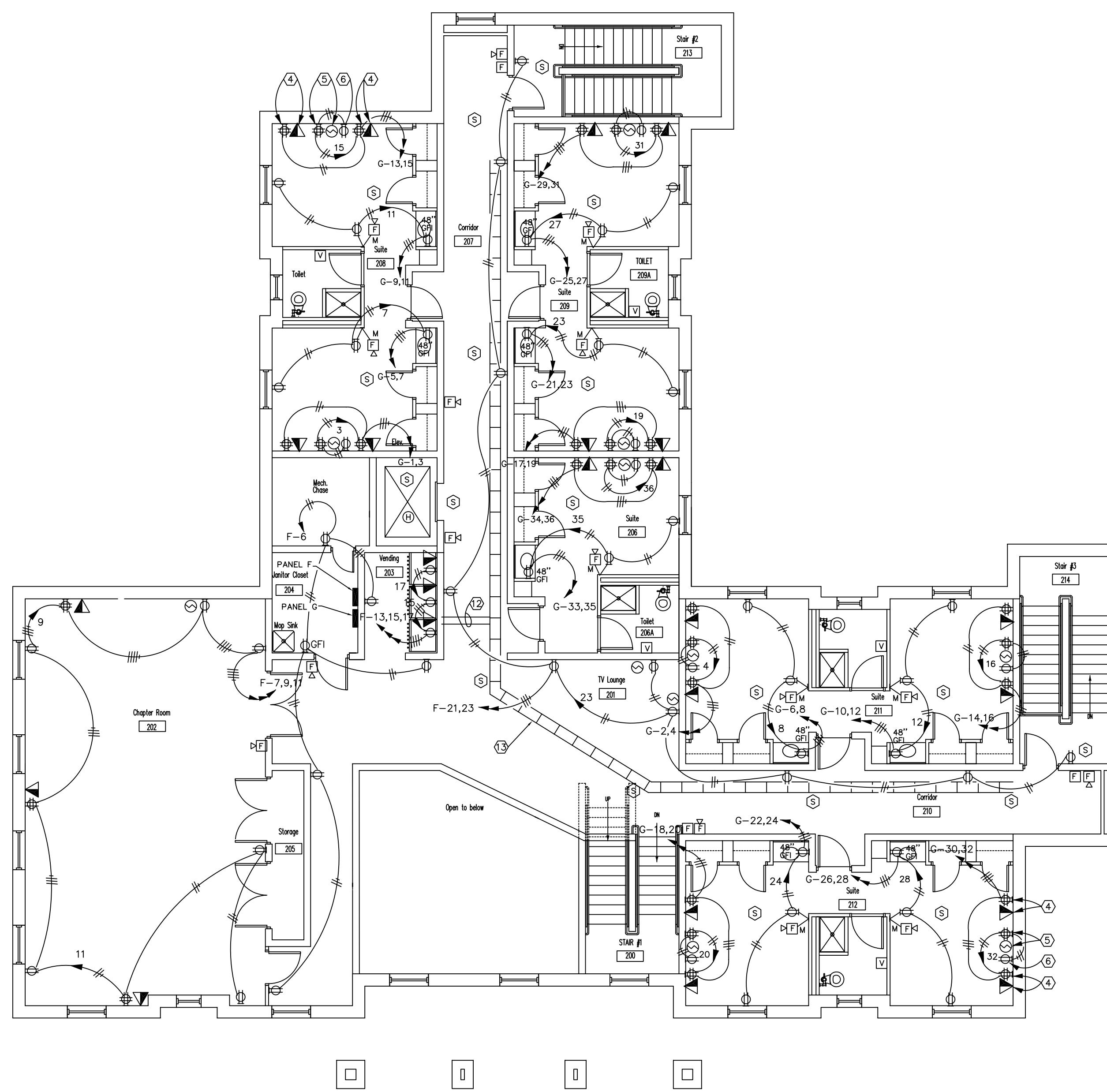
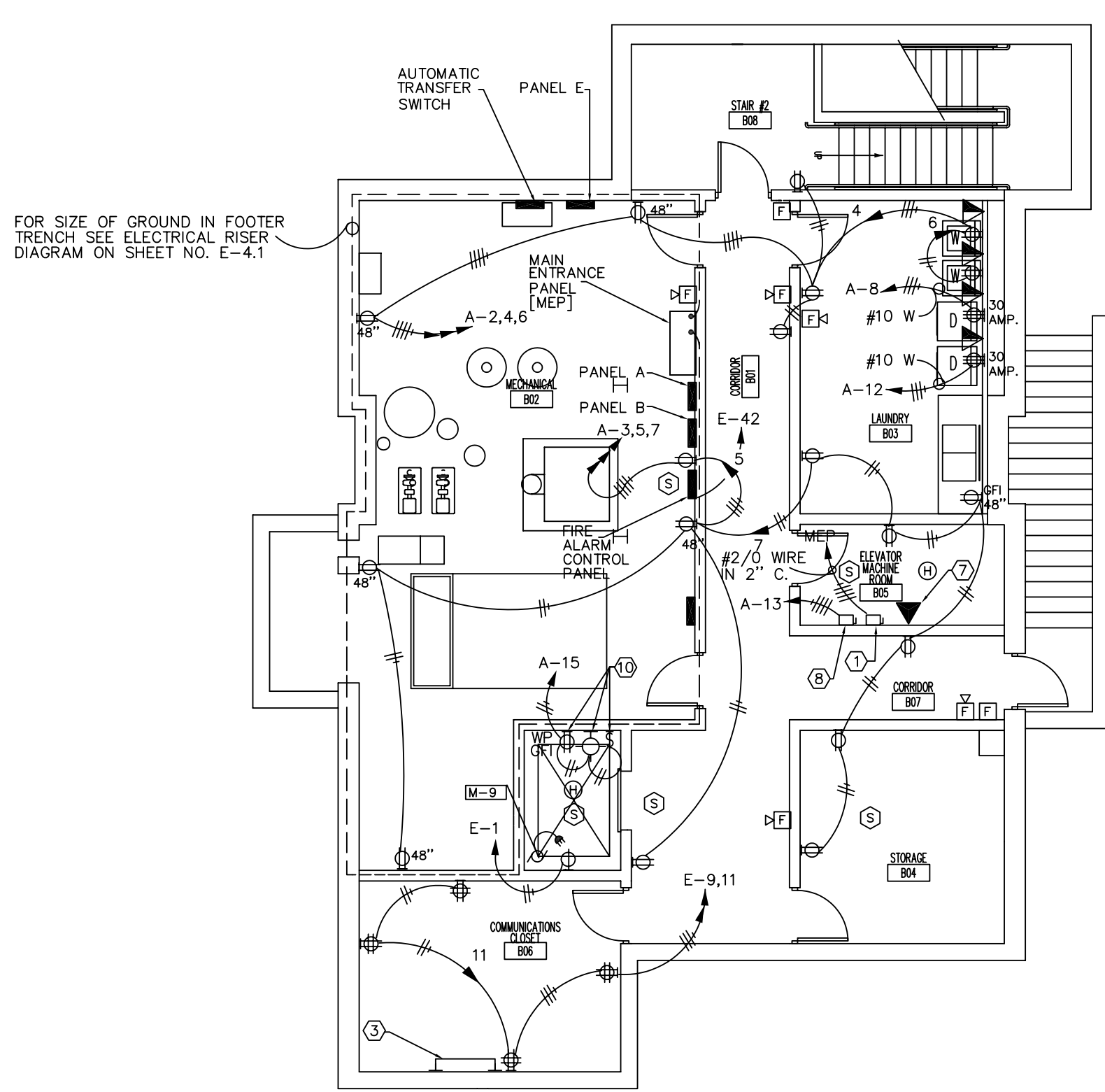


1ST FLOOR - BLDG. 0504 - POWER AND FIRE ALARM PLAN  
SCALE: 1/8" = 1'-0"



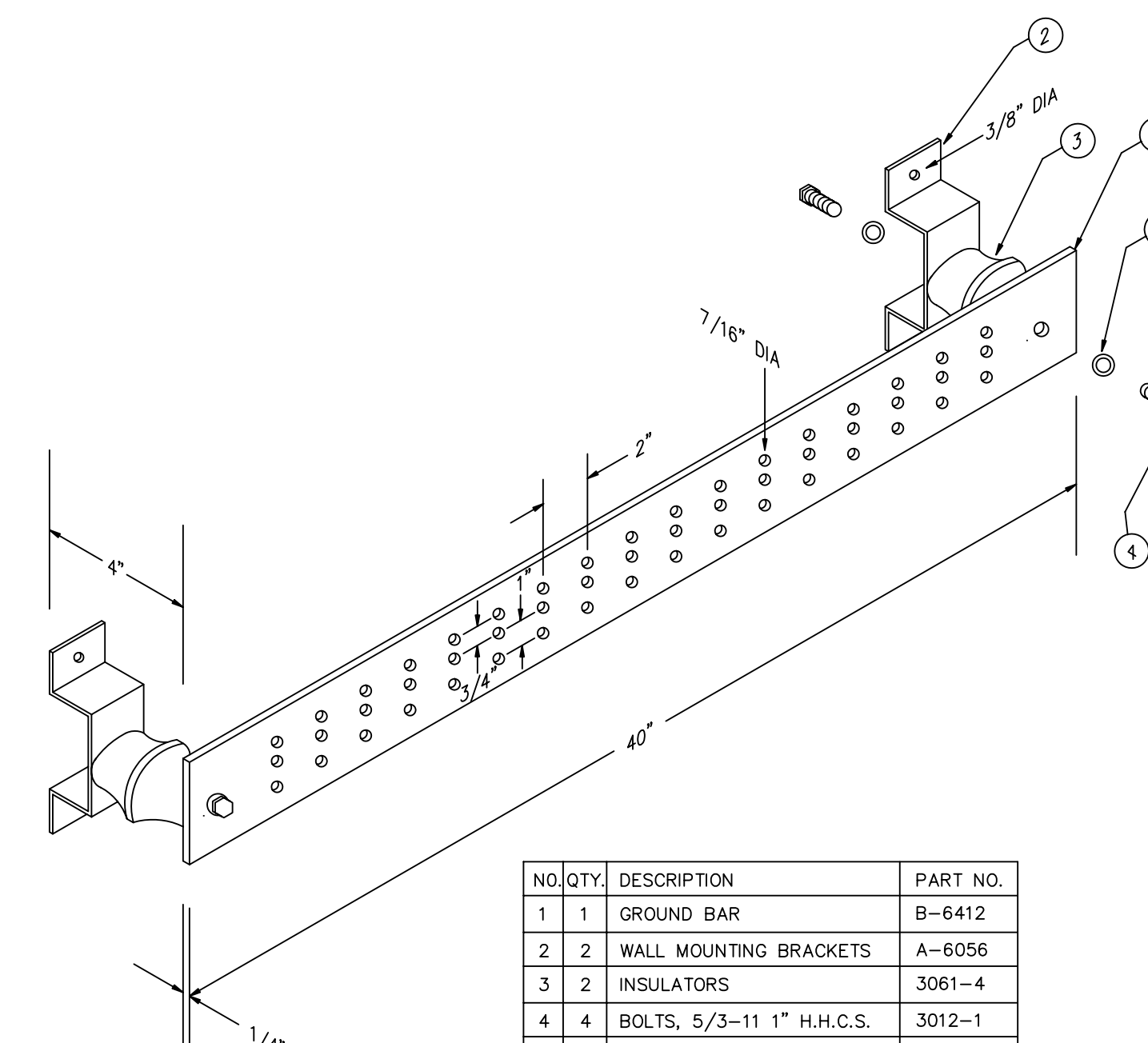
2ND FLOOR - BLDG. 0504 - POWER AND FIRE ALARM PLAN  
SCALE: 1/8" = 1'-0"



BASEMENT - BLDG. 0504 - POWER AND FIRE ALARM PLAN  
SCALE: 1/8" = 1'-0"

SHEET NOTES:

- ① 200 AMP, 208 VOLT FUSED DISCONNECT FOR 20 HP, 208 VOLT, 3 PHASE ELEV. MOTOR. DUAL ELEMENT TIME DELAY FUSE. FROM DISCONNECT SWITCH RUN TO TERMINALS OF ELEVATOR CONTROLLER. DISCONNECT SWITCH SHALL BE FURNISHED WITH DRY & ISOLATED CONTACT SET AT 1 AMP. AT 48 VOLT DC SPST.
- ② MOUNT RECEPTACLE FOR DISHWASHER AT 16" ABOVE FINISHED FLOOR. CONTRACTOR TO INSURE THAT RECEPTACLE BE THE SAME CONFIGURATION AS CORD AND PLUG OF DISHWASHER.
- ③ GROUND BAR, SEE DETAIL THIS SHEET.
- ④ MOUNT COMBINATION DATA/VOICE OUTLET AT 36" ABOVE FINISHED FLOOR, AND QUAD RECEPTACLE ADJACENT AT 16" ABOVE FINISHED FLOOR. TYPICAL FOR ALL STUDENTS RESIDENT ROOMS.
- ⑤ MOUNT RECEPTACLE FOR VIDEO (TV) AT 60" ABOVE FINISHED FLOOR, AND QUAD RECEPTACLE ADJACENT AT 16" ABOVE FINISHED FLOOR. TYPICAL FOR ALL STUDENTS RESIDENT ROOMS.
- ⑥ MOUNT RECEPTACLE FOR UNDER COUNTER REFRIGERATOR AT 16" ABOVE FINISHED FLOOR. TYPICAL FOR ALL STUDENTS ROOMS.
- ⑦ CONTRACTOR SHALL COORDINATE EXACT LOCATION OF TELEPHONE, RECEPTABLES, AND DISCONNECT SWITCHES WITH ELEVATOR CONTRACTOR. TELEPHONE OUTLET TO BE RUN SEPARATELY TO TELEPHONE TERMINAL BOARD. EXTEND AS NEEDED TO ELEVATOR CAR TELEPHONE AND CONNECT.
- ⑧ 20 AMP, 120 VOLT, GFI CIRCUIT FOR ELEVATOR CAR LIGHTS, FAN, & ALARM BELL. RUN TO TERMINALS OF ELEVATOR CONTROLLER. PROVIDE FUSED DISCONNECT OR CIRCUIT BREAKER FOR THIS CIRCUIT IN ELEVATOR MACHINE ROOM.
- ⑨ NOT USED.
- ⑩ CONTRACTOR TO MOUNT SWITCH FOR ELEVATOR LIGHT AT 48" ABOVE ACCESS FLOOR. RECEPTACLE AND ELEVATOR LIGHT TO BE MOUNTED AT 18" ABOVE PIT FLOOR.
- ⑪ PROVIDE & INSTALL 2"-4" EMT CONDUIT FROM COMMUNICATIONS RM TO CABLE TRAY. ROUTE CONDUIT ABOVE CEILING AND TIE INTO CABLE TRAY AS SPECIFIED.
- ⑫ PROVIDE & INSTALL 2"-4" EMT CONDUIT FROM COMMUNICATIONS RM ON 1ST FLOOR TO CABLE TRAY. ROUTE CONDUIT ABOVE CEILING & DOWN INSIDE WALL TO COMMUNICATION ROOM. TIE INTO CABLE TRAY AS SPECIFIED.
- ⑬ PROVIDE & INSTALL COMMUNICATION CABLE TRAY ABOVE CEILING. COORDINATE LOCATION WITH RECESSED LIGHTING, SPRINKLER PIPING, HVAC DUCTWORK & EQUIPMENT, ETC. (SEE CROSS SECTION DETAIL ON SHEET M-11)
- ⑭ DISPENSER UNIT- PROVIDE 208 VOLT, 1 POLE ELECTRICAL CONNECTION VIA 2# 12 THAW WIRE, W/ GND. IN 2-4" EMT. COORDINATE CONNECTION WITH CONTROL PANEL PLACEMENT.



| NO. | QTY. | DESCRIPTION                  | PART NO. |
|-----|------|------------------------------|----------|
| 1   | 1    | GROUND BAR                   | B-6412   |
| 2   | 2    | WALL MOUNTING BRACKETS       | A-6056   |
| 3   | 2    | INSULATORS                   | 3061-4   |
| 4   | 4    | BOLTS, 5/32-11 1/4" H.H.C.S. | 3012-1   |
| 5   | 4    | 5/8" LOCK WASHERS            | 3015-8   |

PART NUMBERS FOR THE GROUND BAR SHOWN REFER TO NEWTON INSTRUMENT UNIT #A10864. SEE SPECS.

REVISED SET  
THIS DRAWING HAS BEEN REVISED TO REFLECT REVISIONS MADE BY THE ENGINEER DURING CONSTRUCTION.  
ADAMS, FRAZIER, ANDERSON INC.  
CONSULTING ENGINEERS  
BY: \_\_\_\_\_  
DATE: \_\_\_\_\_