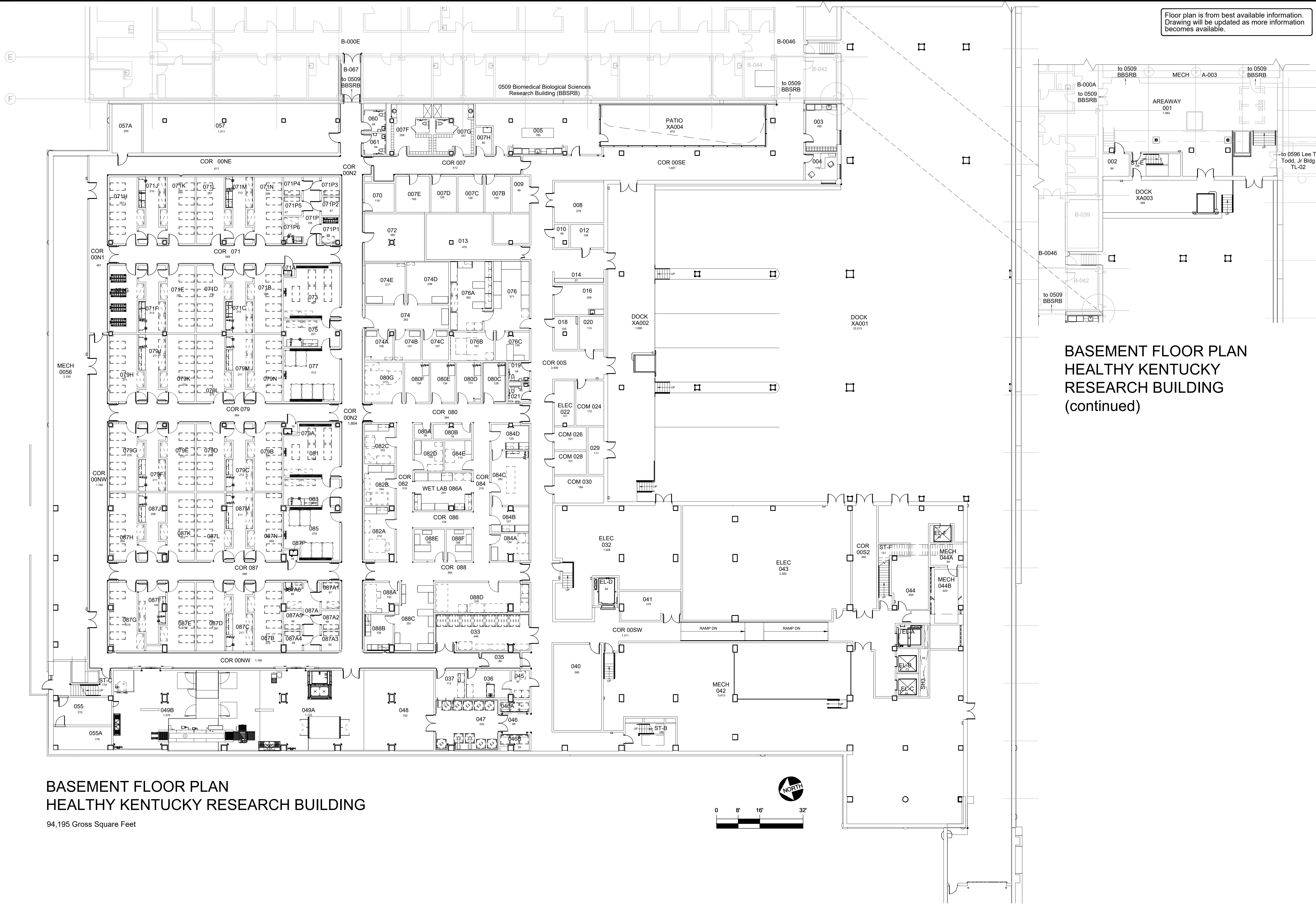


Floor plan is from best available information. Drawing will be updated as more information becomes available.



**BASEMENT FLOOR PLAN
HEALTHY KENTUCKY
RESEARCH BUILDING
(continued)**

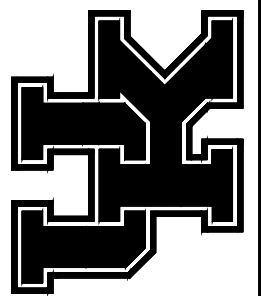
**BASEMENT FLOOR PLAN
HEALTHY KENTUCKY RESEARCH BUILDING**

94,195 Gross Square Feet

DATE:
09-18-18
DRAWN BY:
AKN

BLDG #:
0679

HEALTHY KENTUCKY RESEARCH BUILDING
KEY DRAWING

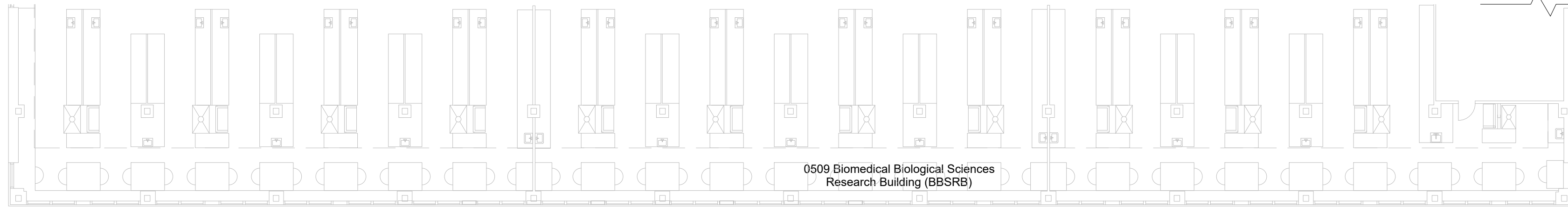
UNIVERSITY OF KENTUCKY
Facilities Information Services


SHEET
1 of 8

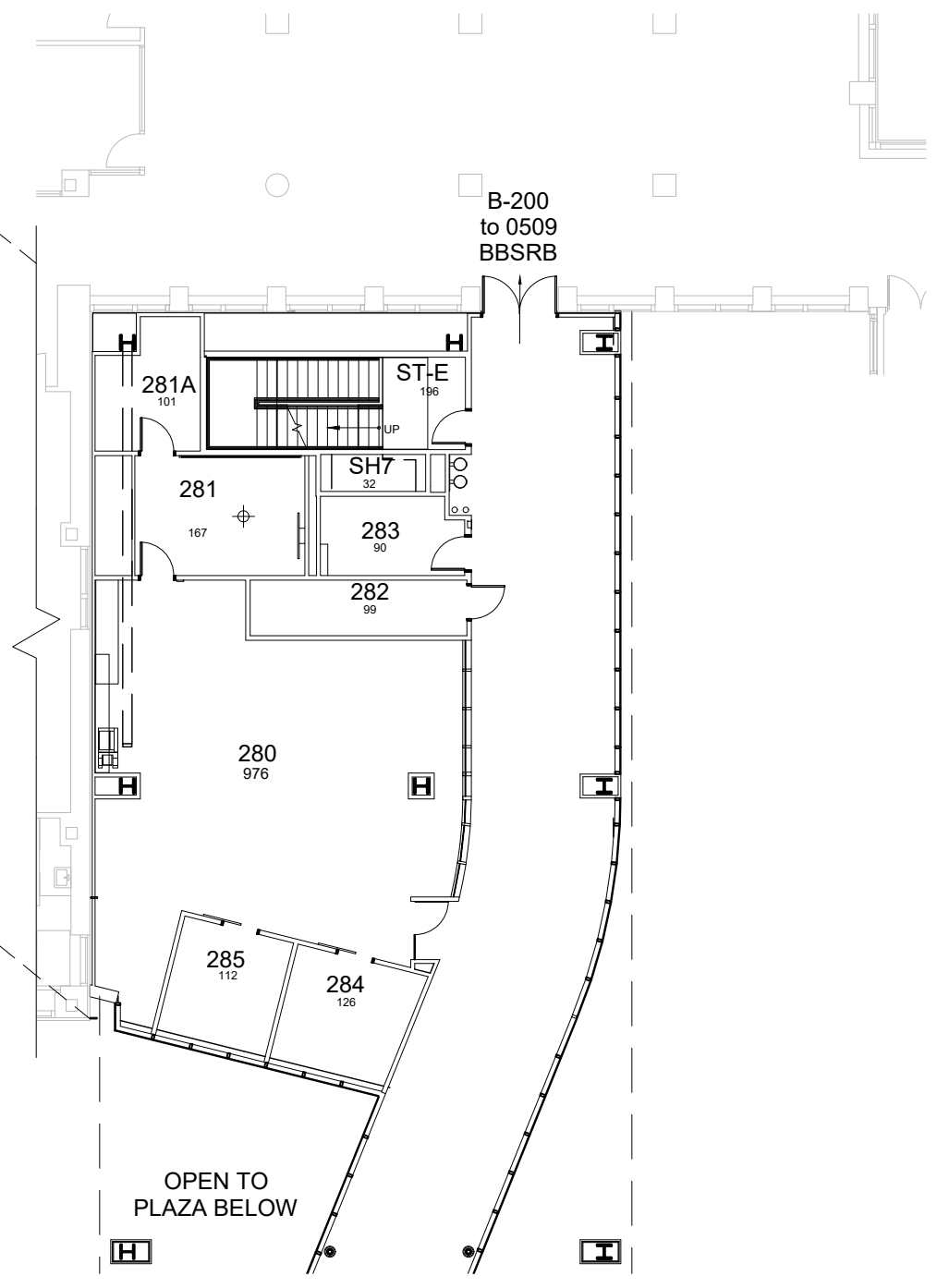
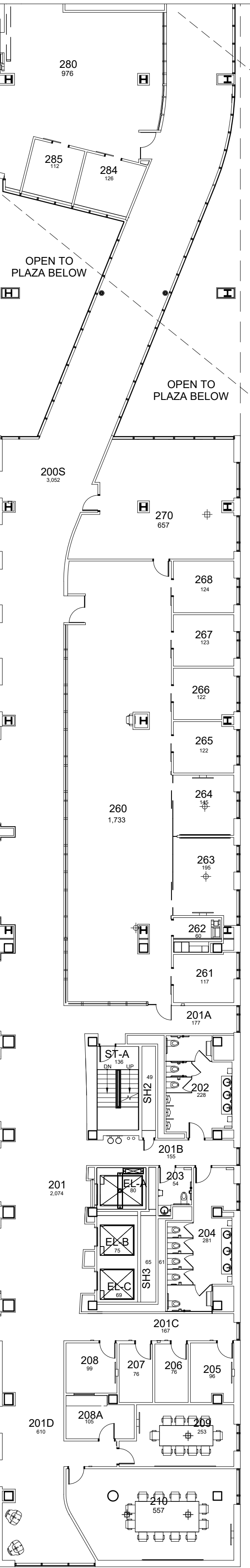
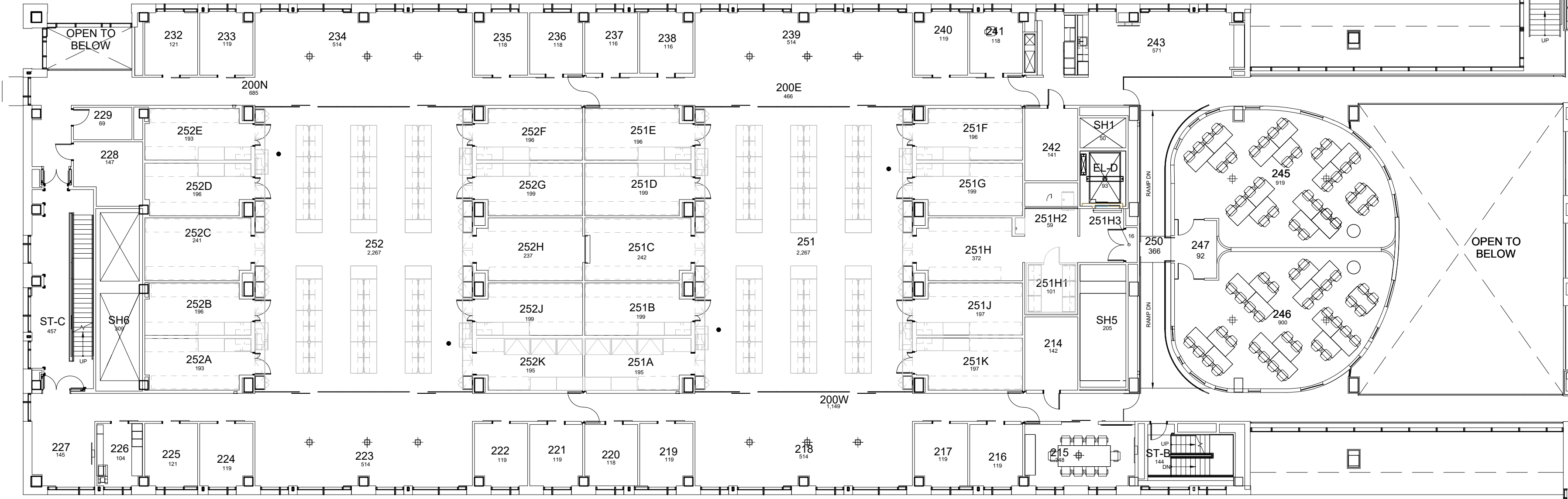
3/22/22

JES

Floor plan is from best available information. Drawing will be updated as more information becomes available.



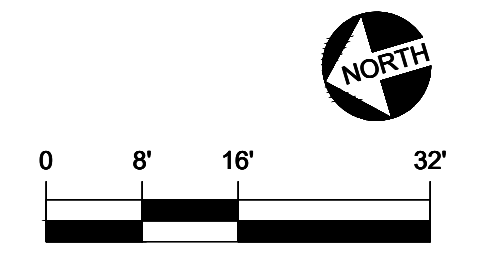
0509 Biomedical Biological Sciences Research Building (BBSRB)



SECOND FLOOR PLAN
HEALTHY KENTUCKY RESEARCH BUILDING
(continued)

SECOND FLOOR PLAN HEALTHY KENTUCKY RESEARCH BUILDING

38,980 Gross Square Feet

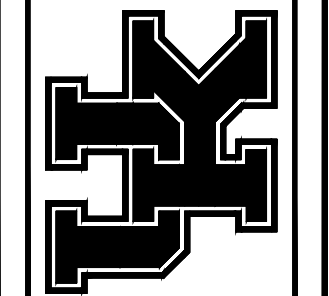


DATE: 09-18-18
DRAWN BY: AKN

BLDG #: 0679

HEALTHY KENTUCKY RESEARCH BUILDING
KEY DRAWING

UNIVERSITY OF KENTUCKY
Facilities Information Services

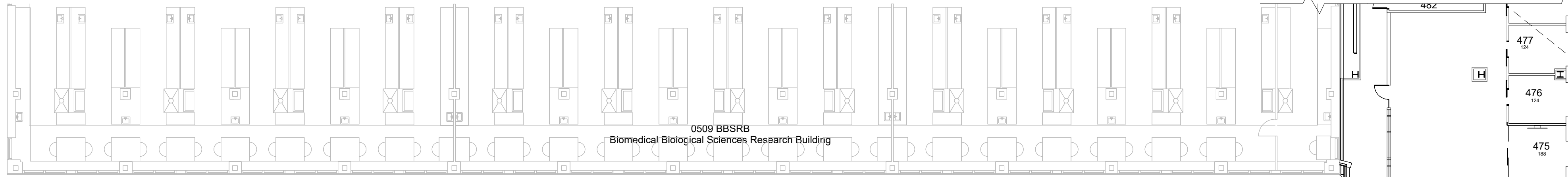


SHEET
3 of 8

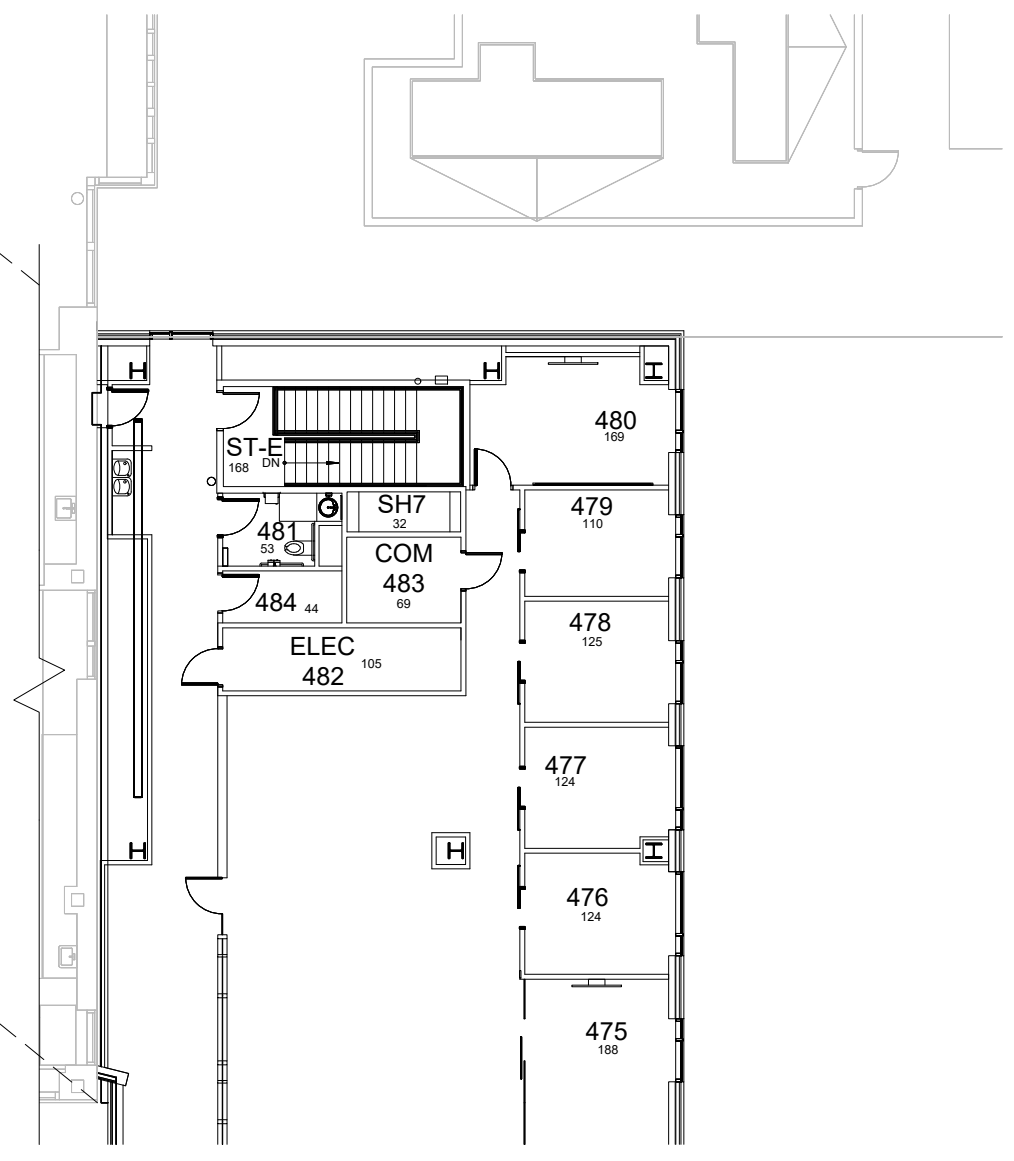
3/22/22

JES

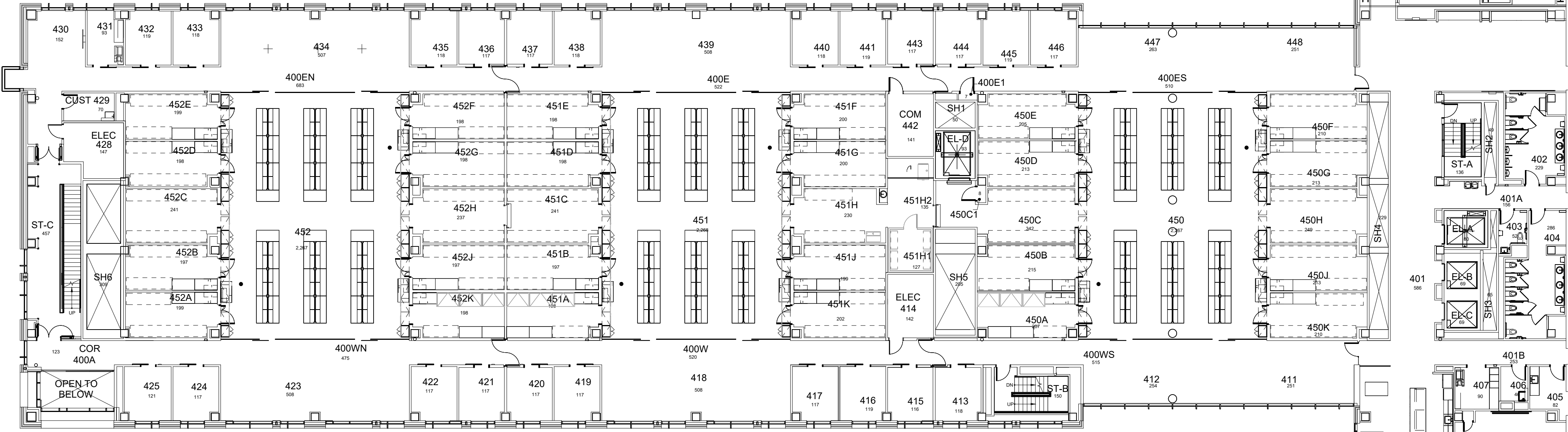
Floor plan is from best available information. Drawing will be updated as more information becomes available.



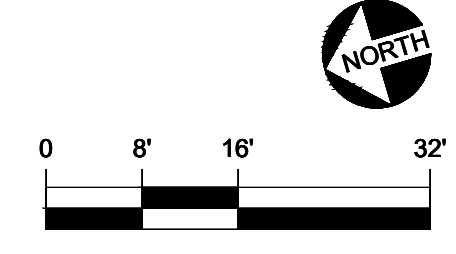
0509 BBSRB
Biomedical Biological Sciences Research Building



FOURTH FLOOR PLAN
HEALTHY KENTUCKY
RESEARCH BUILDING
(continued)



FOURTH FLOOR PLAN
HEALTHY KENTUCKY RESEARCH BUILDING
42,806 Gross Square Feet

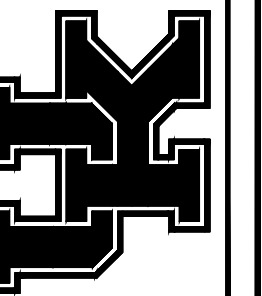


DATE:
09-18-18
DRAWN BY:
NEK

BLDG #:
0679

HEALTHY KENTUCKY RESEARCH BUILDING
KEY DRAWING

UNIVERSITY OF KENTUCKY
Facilities Information Services



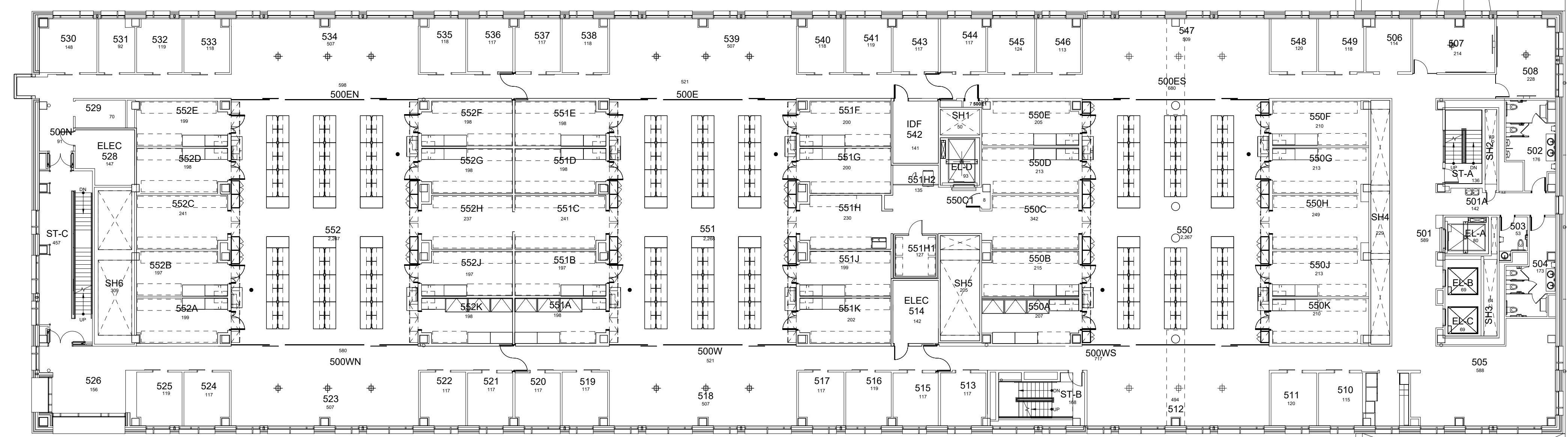
SHEET
5 of 8

3/22/22

JES

Floor plan is from best available information. Drawing will be updated as more information becomes available.

0509 BBSRB
Biomedical Biological Sciences Research Building



FIFTH FLOOR PLAN HEALTHY KENTUCKY RESEARCH BUILDING

31,816 Gross Square Feet

ROOF

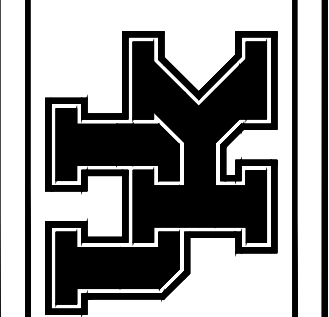
FIFTH FLOOR PLAN HEALTHY KENTUCKY RESEARCH BUILDING (continued - ROOF PLAN)

DATE:
09-18-18
DRAWN BY:
NEK

BLDG #:
0679

HEALTHY KENTUCKY RESEARCH BUILDING
KEY DRAWING

UNIVERSITY OF KENTUCKY
Facilities Information Services



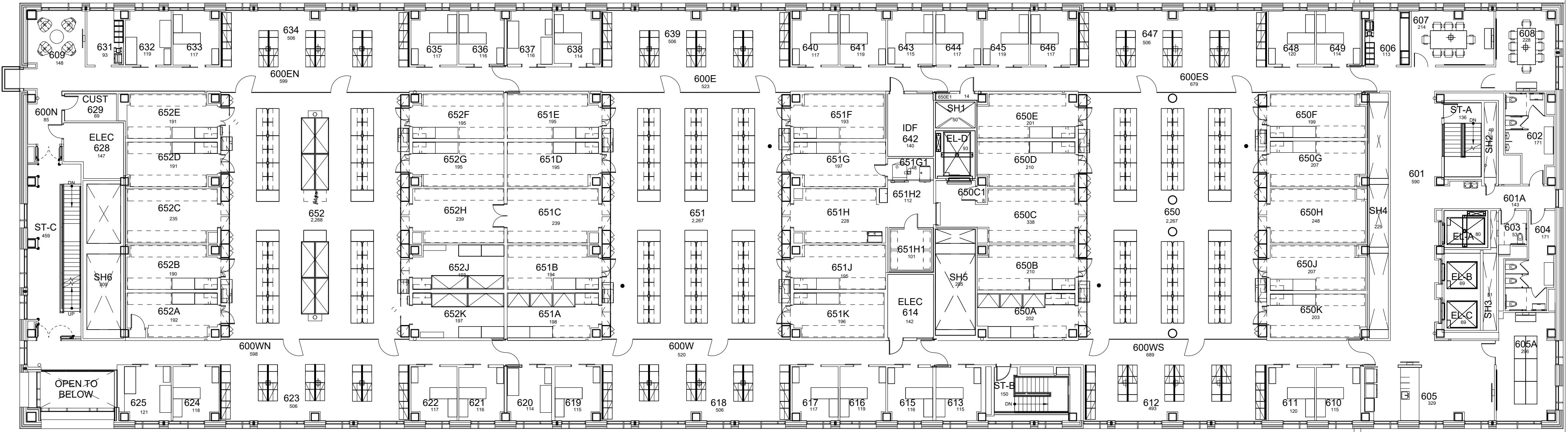
SHEET
6 of 8

3/22/22

JES

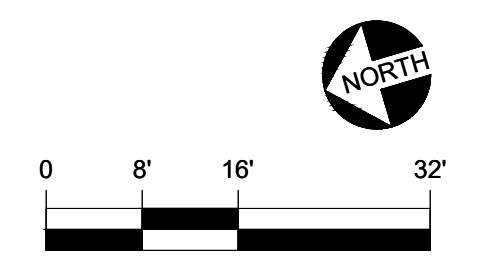
Floor plan is from best available information. Drawing will be updated as more information becomes available.

0509 BBSRB Biomedical Biological Sciences Research Building



SIXTH FLOOR PLAN HEALTHY KENTUCKY RESEARCH BUILDING

31,639 Gross Square Feet



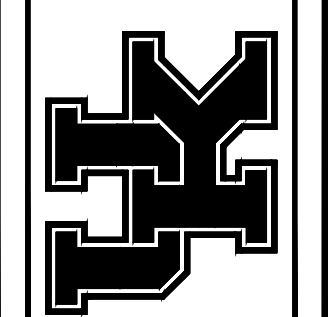
4/17/22
NEK

DATE:
09-18-18
DRAWN BY:
JES

BLDG #:
0679

HEALTHY KENTUCKY RESEARCH BUILDING
KEY DRAWING

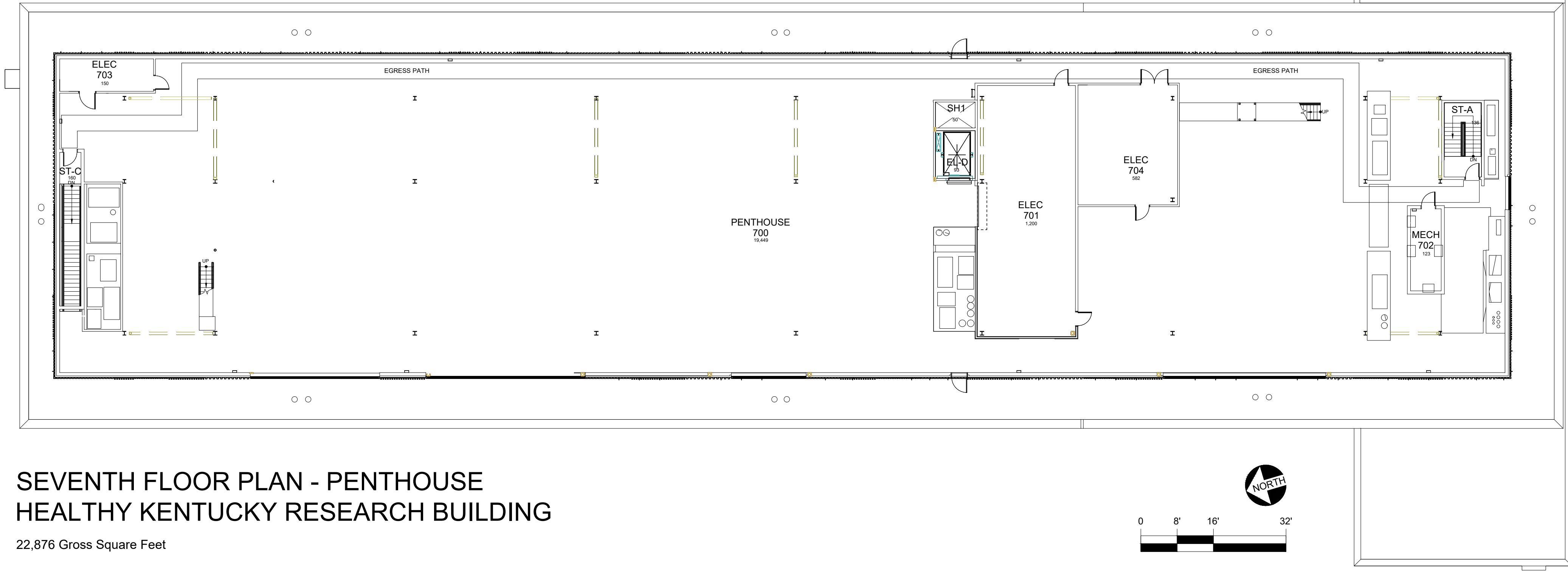
UNIVERSITY OF KENTUCKY
Facilities Information Services



SHEET
7 of 8

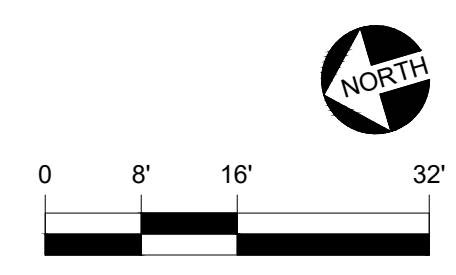
Floor plan is from best available information.
Drawing will be updated as more information
becomes available.

0509 BBSRB ROOF
Biomedical Biological Sciences Research Building



SEVENTH FLOOR PLAN - PENTHOUSE
HEALTHY KENTUCKY RESEARCH BUILDING

22,876 Gross Square Feet



DATE:
09-18-18
DRAWN BY:
JES

BLDG #:
0679

HEALTHY KENTUCKY RESEARCH BUILDING
KEY DRAWING

UNIVERSITY OF KENTUCKY
Facilities Information Services

SHEET
8 of 8

2/11/21

JES