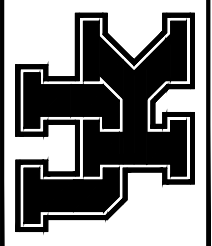


DATE:
08-2006
DRAWN BY:
N/A

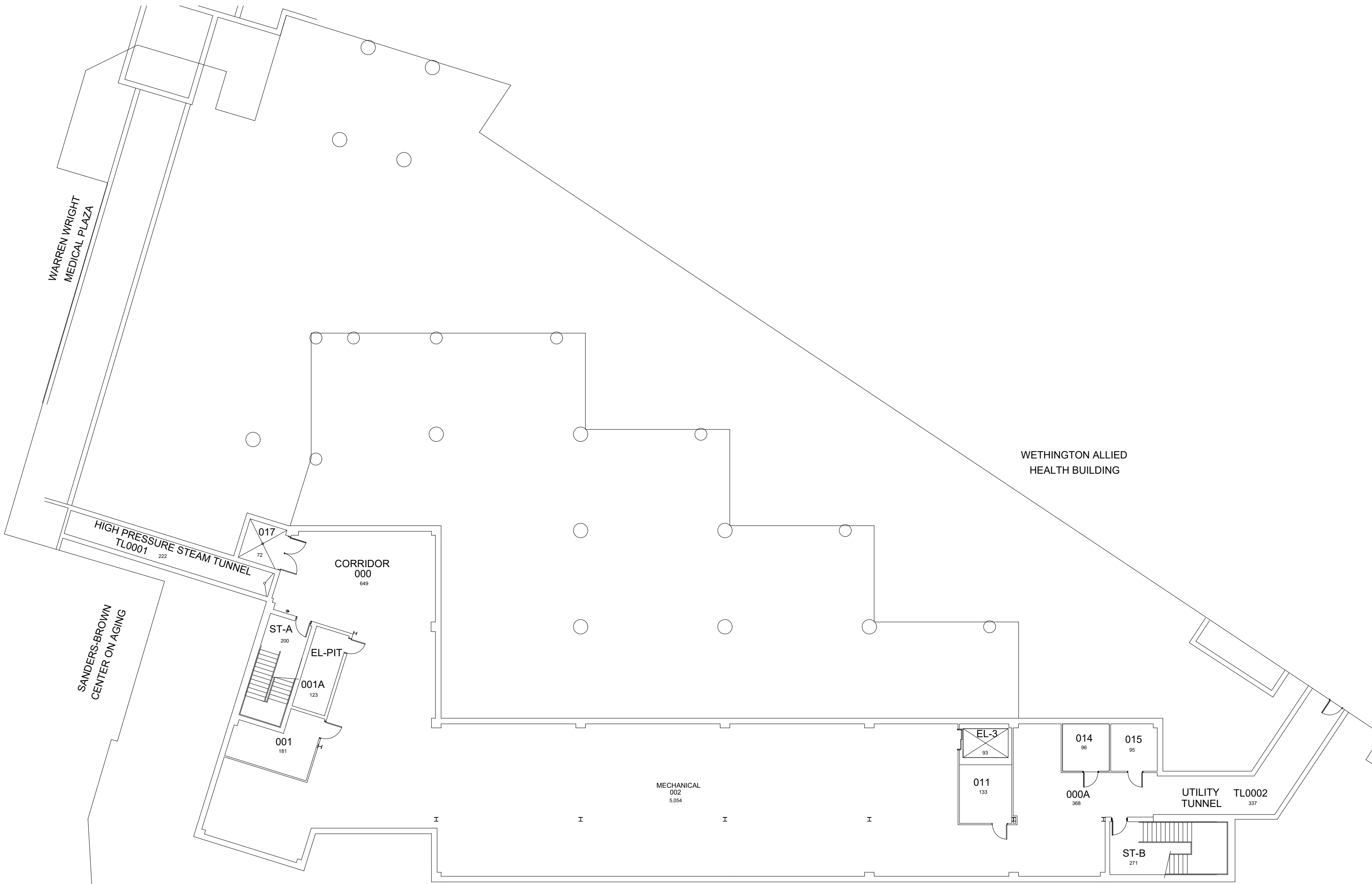
BLDG #:
0582

University Health Service
KEY DRAWING

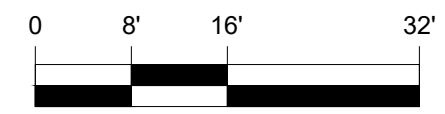
UNIVERSITY OF KENTUCKY
Facilities Information Services



SHEET
1 of 7



UNIVERSITY HEALTH SERVICE
BASEMENT FLOOR PLAN
8,913 Gross Square Ft.



05-15-13

MKS

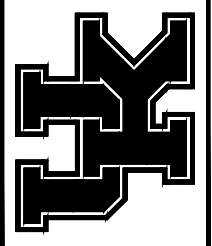
DATE:
08-2006
DRAWN BY:
N/A

BLDG #:
0582

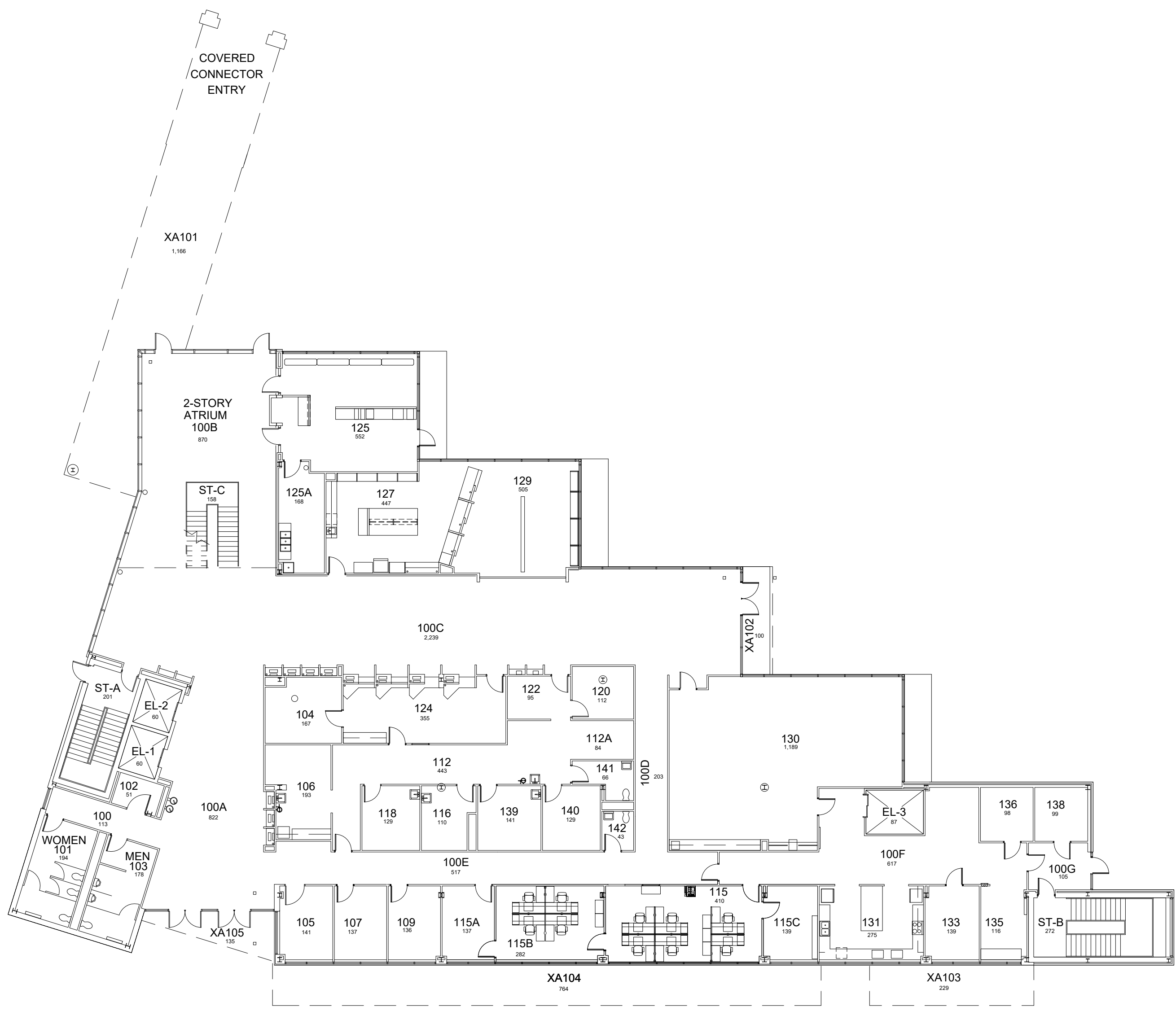
University Health Service

KEY DRAWING

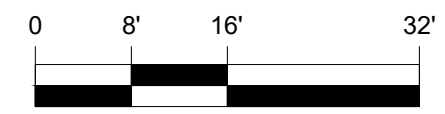
UNIVERSITY OF KENTUCKY
Facilities Information Services



SHEET
2 of 7



UNIVERSITY HEALTH SERVICE
FIRST FLOOR PLAN
17,211 Gross Square Ft.



12-6-16

AKN

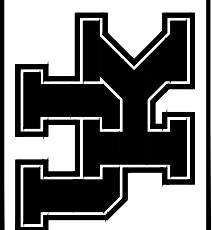
DATE:
08-2006
DRAWN BY:
N/A

BLDG #:
0582

University Health Service

KEY DRAWING

UNIVERSITY OF KENTUCKY
Facilities Information Services



SHEET
3 of 7



UNIVERSITY HEALTH SERVICE
SECOND FLOOR PLAN
15,478 Gross Square Ft.

7/17/2020

KMD

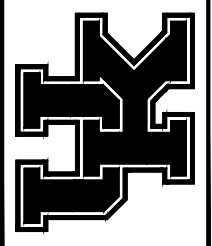
DATE:
08-2006
DRAWN BY:
N/A

BLDG #:
0582

University Health Service

KEY DRAWING

UNIVERSITY OF KENTUCKY
Facilities Information Services



SHEET
4 of 7



UNIVERSITY HEALTH SERVICE
THIRD FLOOR PLAN
17,508 Gross Square Ft.

7/17/2020

KMD

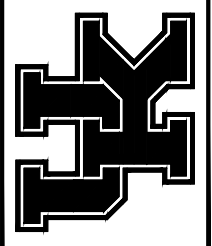
DATE:
08-2006
DRAWN BY:
N/A

BLDG #:
0582

University Health Service

KEY DRAWING

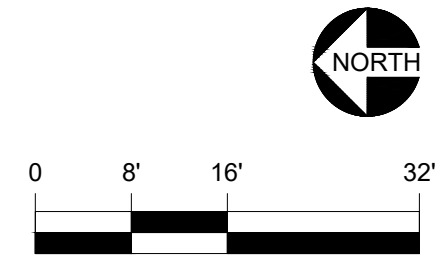
UNIVERSITY OF KENTUCKY
Facilities Information Services



SHEET
5 of 7

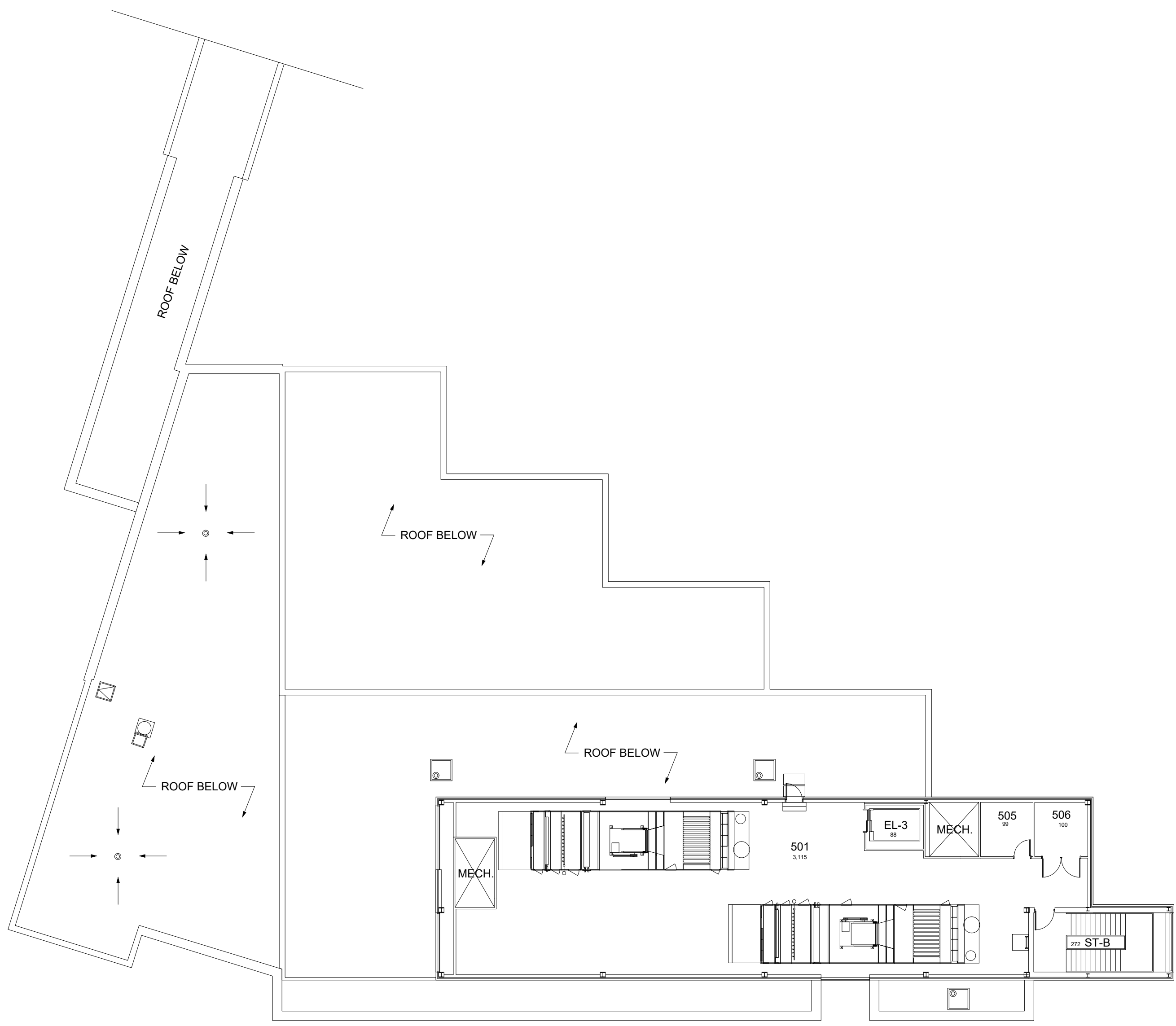


UNIVERSITY HEALTH SERVICE
FOURTH FLOOR PLAN
11,780 Gross Square Ft.

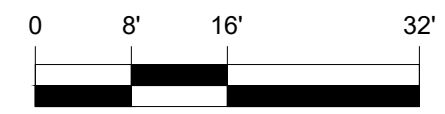


9-17-15

JES



UNIVERSITY HEALTH SERVICE
 PENTHOUSE FLOOR PLAN
 4,358 Gross Square Ft.

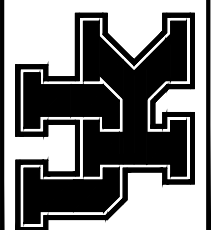


DATE:
08-2006
 DRAWN BY:
N/A

BLDG #:
0582

University Health Service
KEY DRAWING

UNIVERSITY OF KENTUCKY
 Facilities Information Services



SHEET
 6 of 7

9-17-15

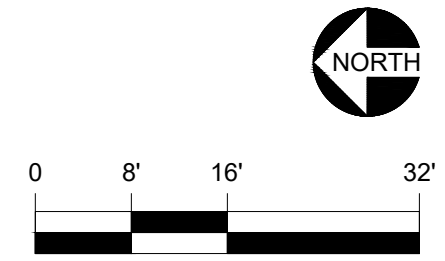
JES

05-15-13

MKS



UNIVERSITY HEALTH SERVICE
ROOF FLOOR PLAN

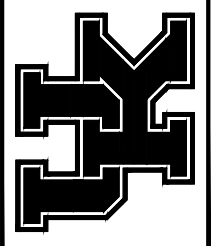


DATE:
08-2006
DRAWN BY:
N/A

BLDG #:
0582

University Health Service
KEY DRAWING

UNIVERSITY OF KENTUCKY
Facilities Information Services



SHEET
7 of 7