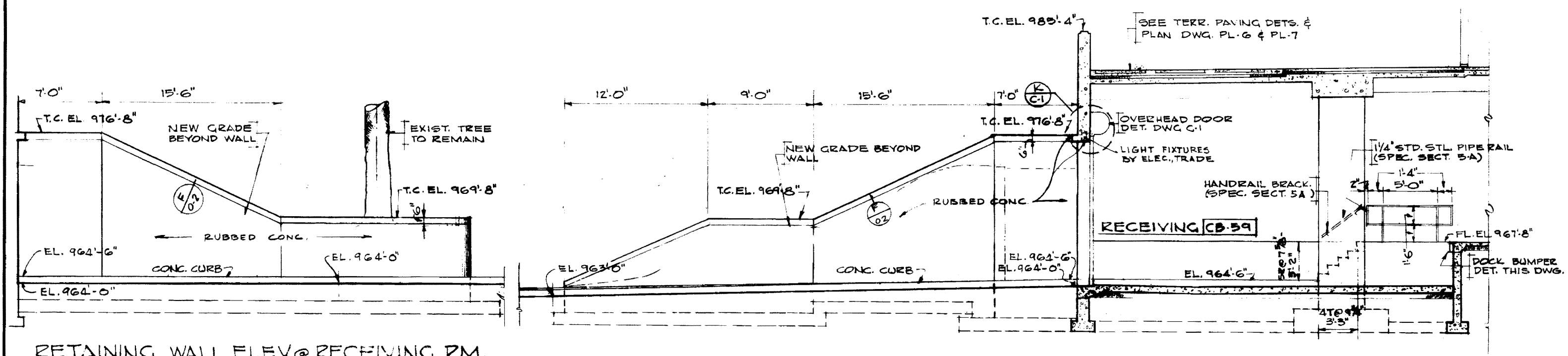
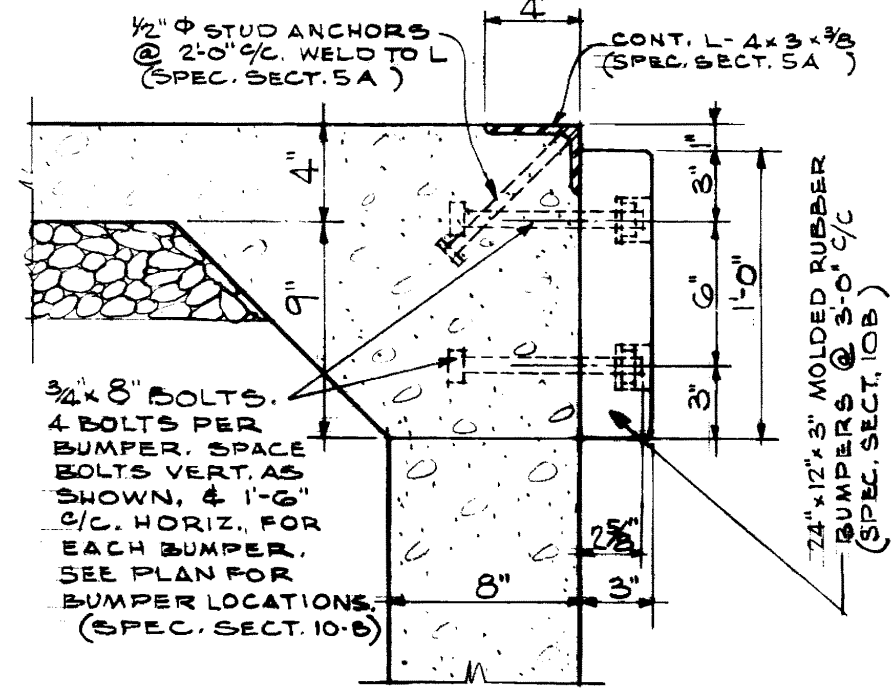


000 213

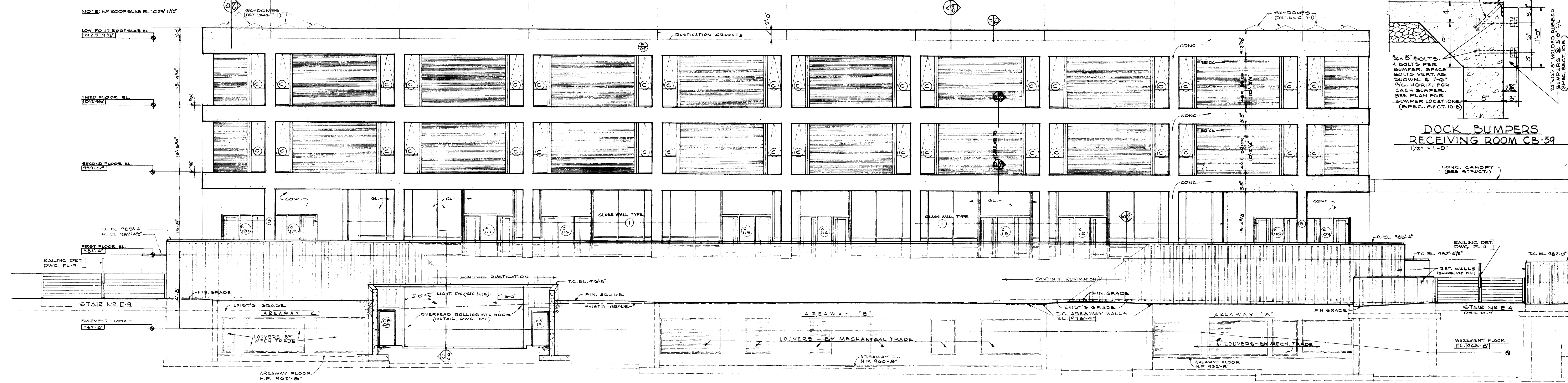


RETAINING WALL ELEV. @ RECEIVING RM.
1/8" = 1'-0"

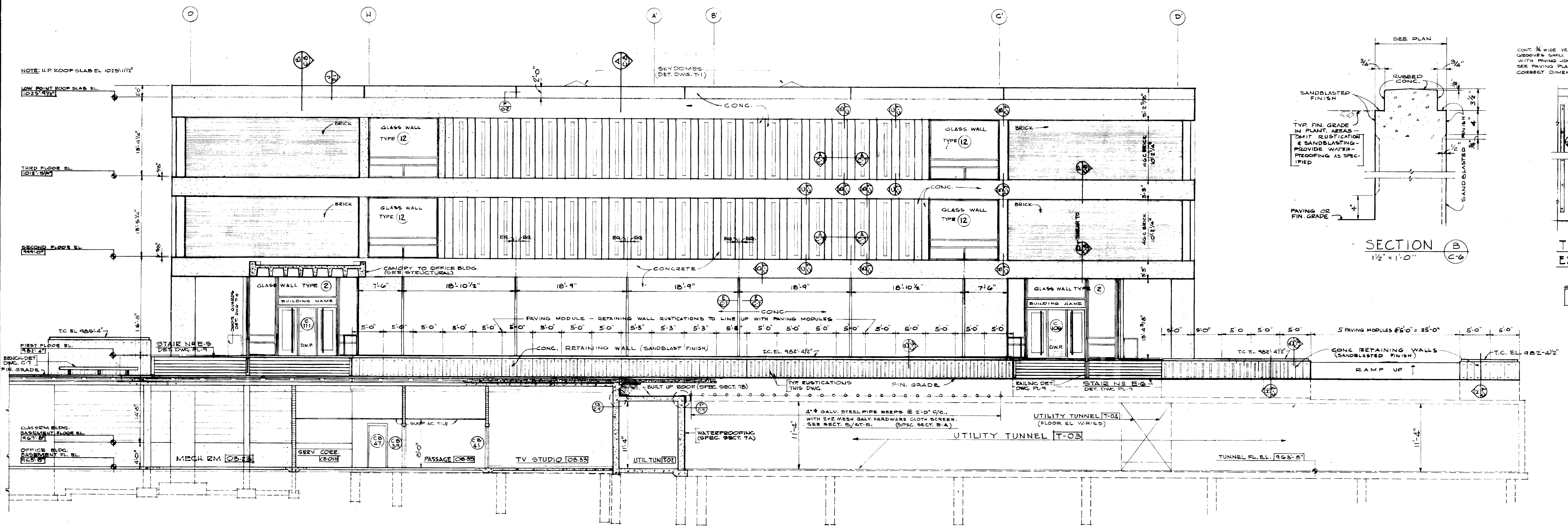
SECTION C THRU RECEIVING CB-59
1/8" = 1'-0"



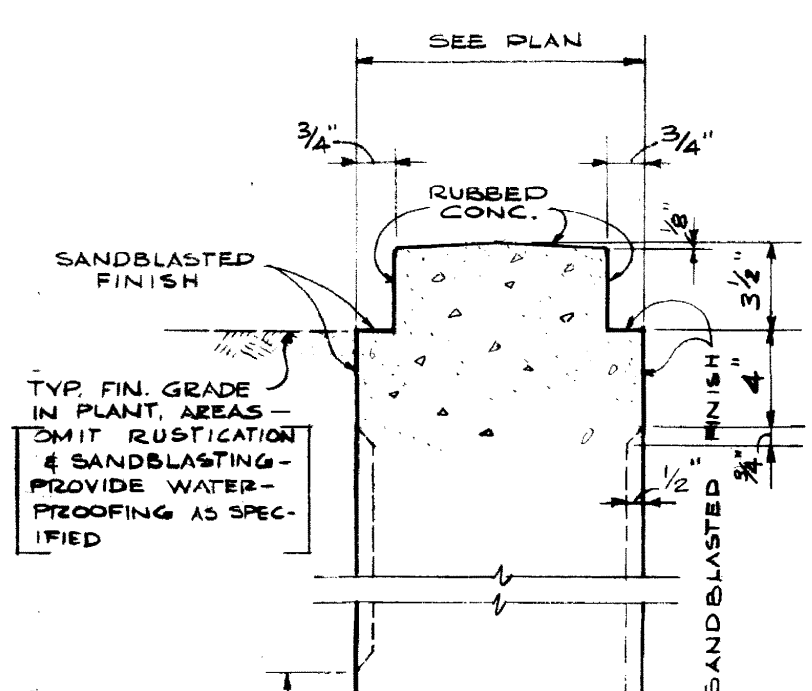
DOCK BUMPERS
RECEIVING ROOM CB-59
1/2" = 1'-0"



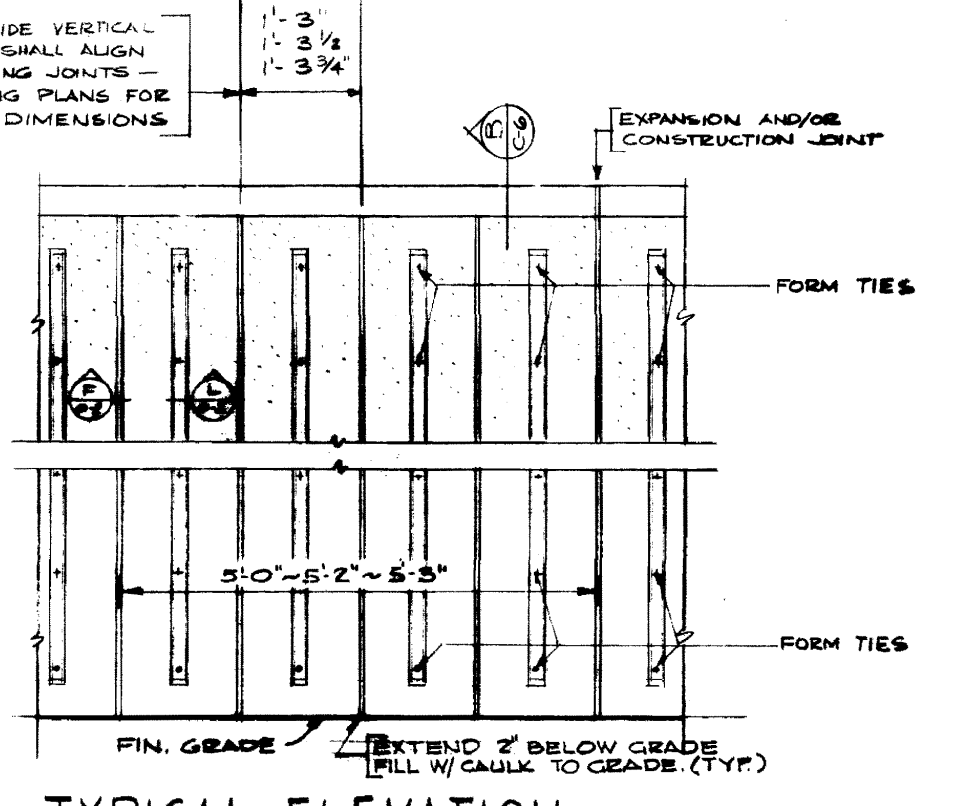
NORTH ELEVATION - CLASSROOM BUILDING
1/8" = 1'-0"



WEST ELEVATION - CLASSROOM BUILDING
1/8" = 1'-0"

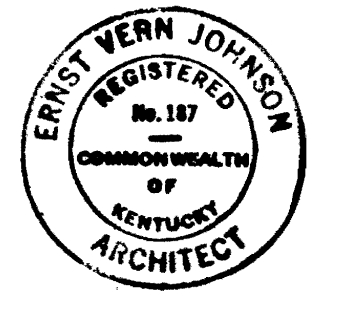


SECTION B
1/2" = 1'-0"



TYPICAL ELEVATION -
EXT. RETAINING WALLS
1/2" = 1'-0"

SHOWING TYP. RUSTICATION PATTERN
SEE DRAWING PL-8 FOR PATTERN
ON SIDEWALLS OF EXTERIOR STAIRS.



PROJECT NO. KY 2-1555

NORTH & WEST ELEVATIONS

GENERAL CLASSROOM-OFFICE BUILDING
UNIVERSITY OF KENTUCKY
LEXINGTON, KENTUCKY

SPEC. NO. C503	JOHNSON - ROMANOWITZ ARCHITECTS LEXINGTON, KENTUCKY	DRAWING NO. C-6
DRAWN BY DLB		TOTAL SHEETS 137
CHECKED BY J-R	COMMONWEALTH OF KENTUCKY DEPARTMENT OF FINANCE ENGINEERING STAFF	DATE DEC. 1966
REVISIONS	FRANKFORT, KENTUCKY	

APPROVED BY: *Byron F. Romanowicz* DATE: 1/6/67
APPROVED BY: *Emory Vern Johnson* DATE: 1-10-67

WIDTH OF EXTERIOR WALL SHOWN CHANGED 1/6-67

JOHNSON / ROMANOWITZ
10
117
A-2
11/23/66