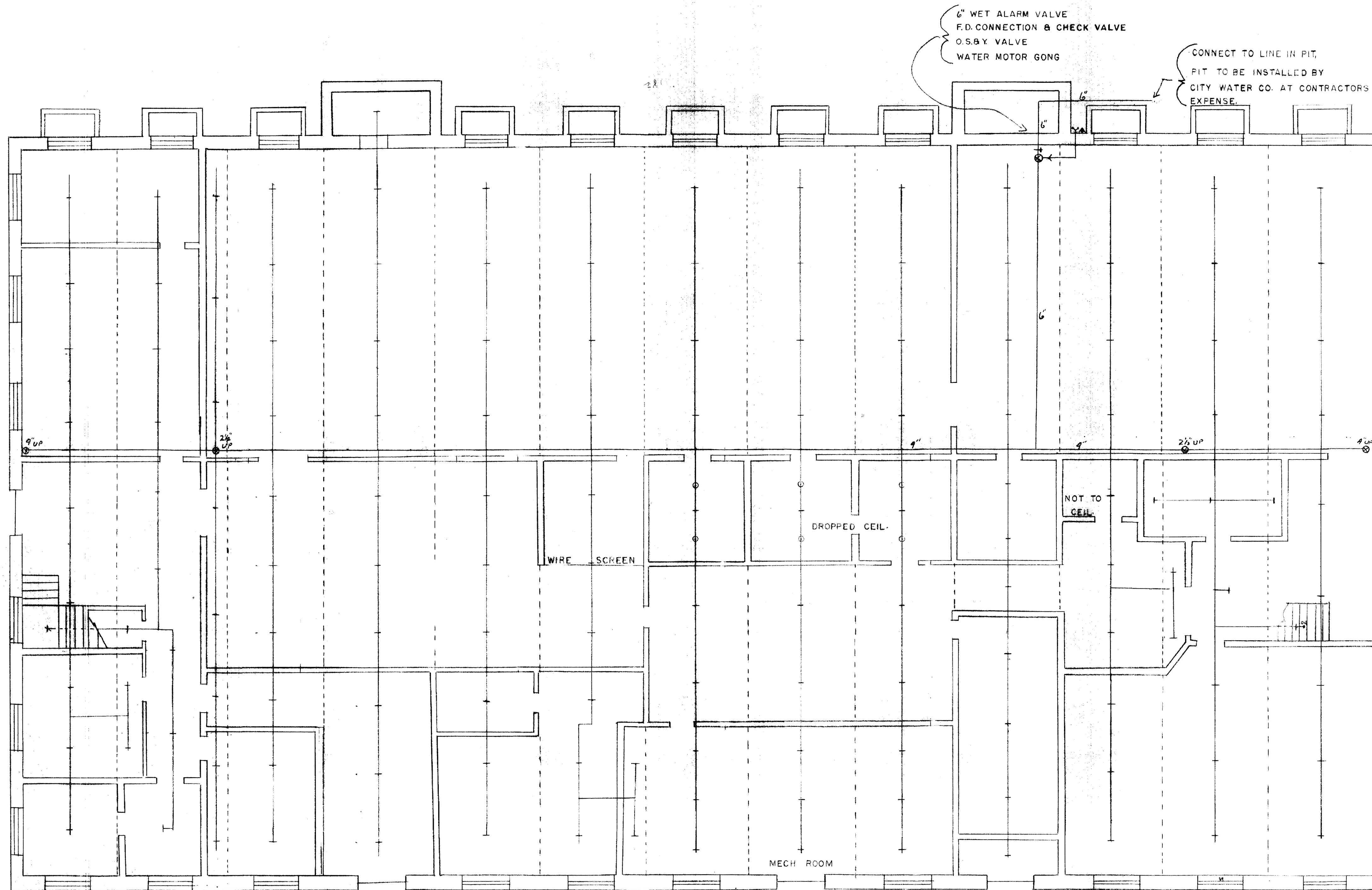


00115

B-1



GROUND FLOOR

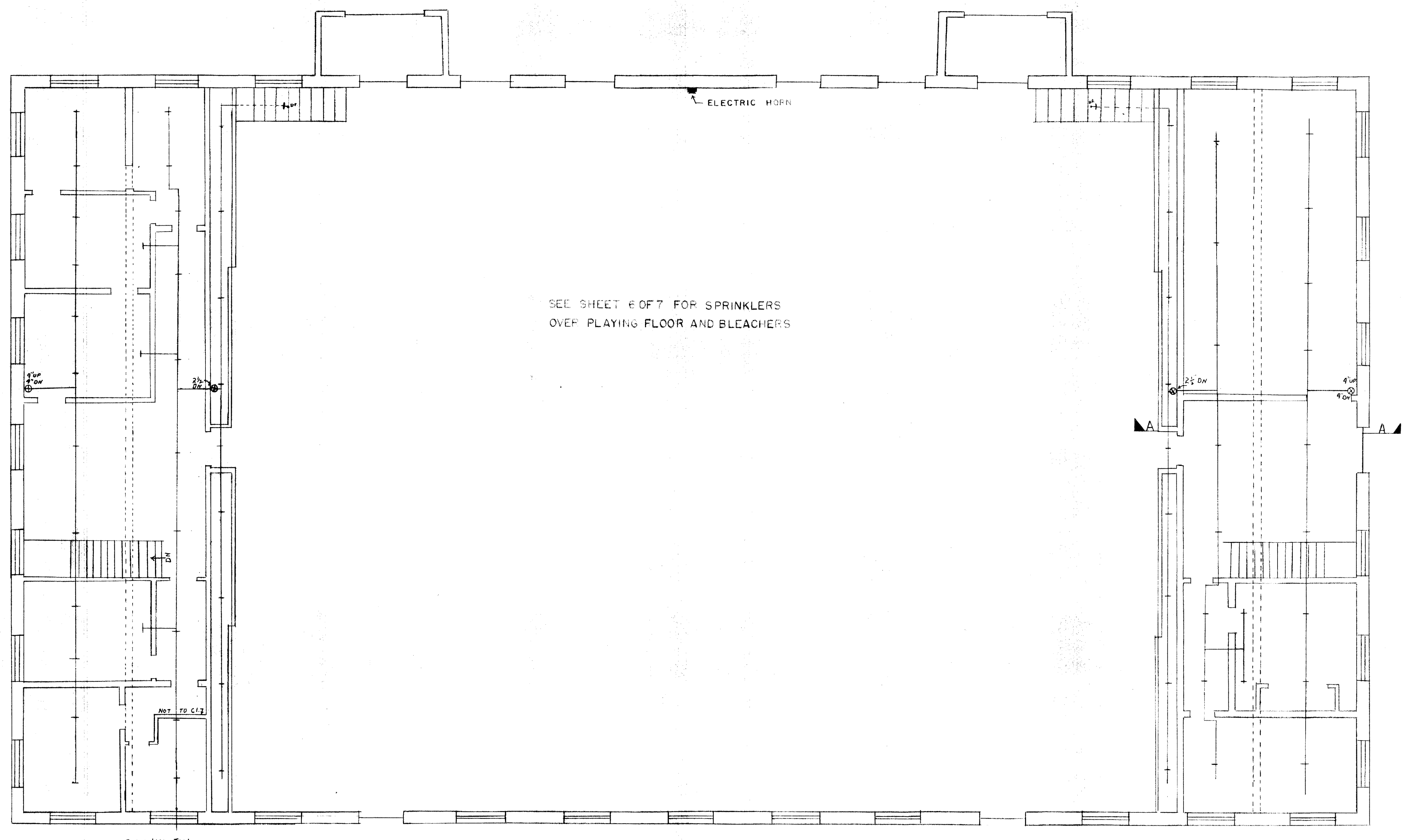
(153)

UNIVERSITY OF KENTUCKY LEXINGTON KENTUCKY		
DRAWN BY JSS	ALUMNI GYM	DATE 2-4-60
TRACED BY		SCALE 1/8" = 1'-0"
CHECKED BY	SPRINKLER SYSTEM	SPEC. NO.
COMMONWEALTH OF KENTUCKY DEPARTMENT OF FINANCE ENGINEERING STAFF FRANKFORT KENTUCKY		DRAWING NO. 1 OF 4
APPROVED BY AGENCY HEAD <i>Palmer B. Conlee</i>	DATE 2-4-60	
APPROVED BY CHIEF OF STAFF <i>David R. Pritchett</i>	DATE 2-4-60	

Document # 013066
Sheet B-1
129

U-1258

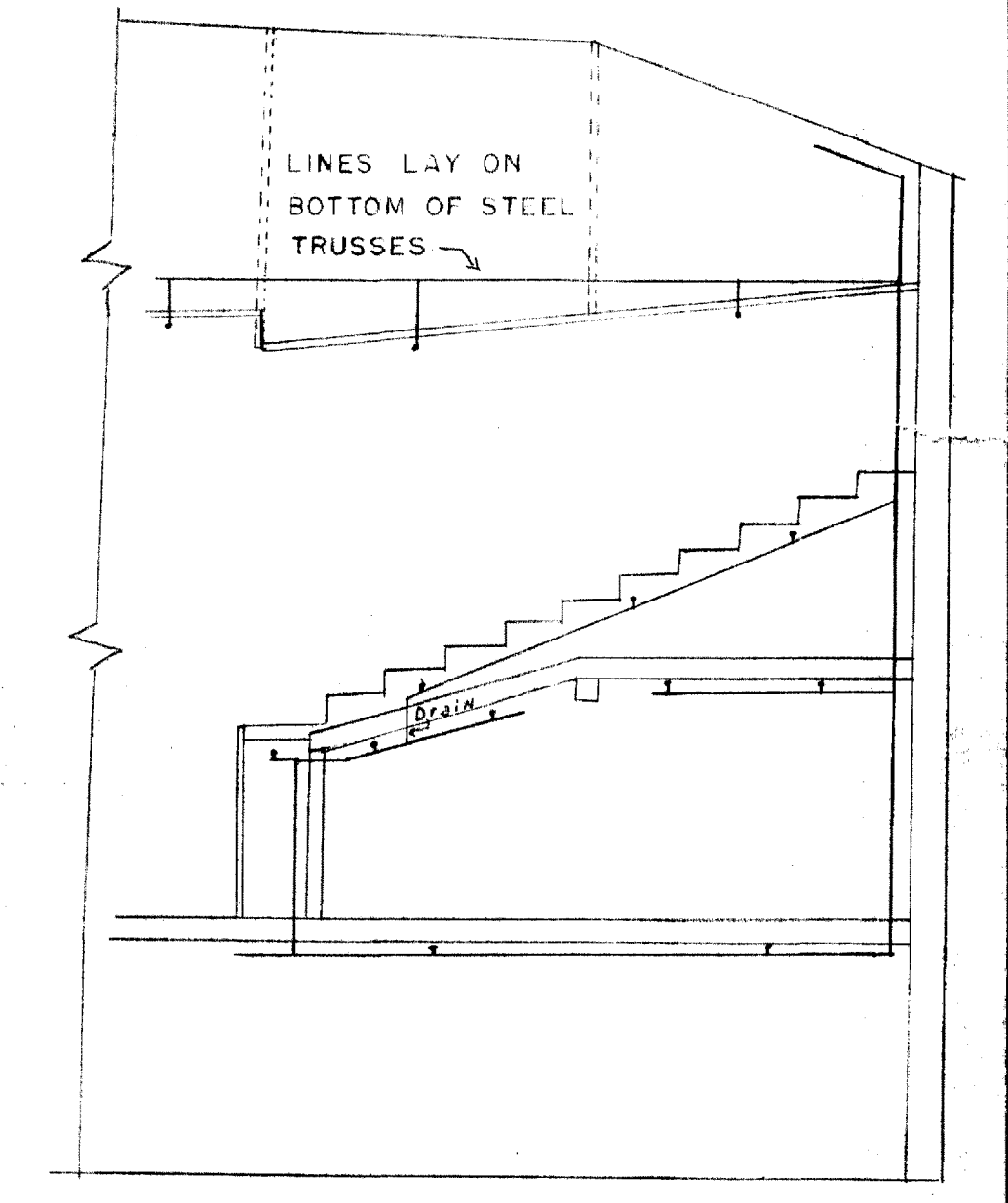
001116



SEE SHEET 6 OF 7 FOR SPRINKLERS
OVER PLAYING FLOOR AND BLEACHERS

FIRST FLOOR

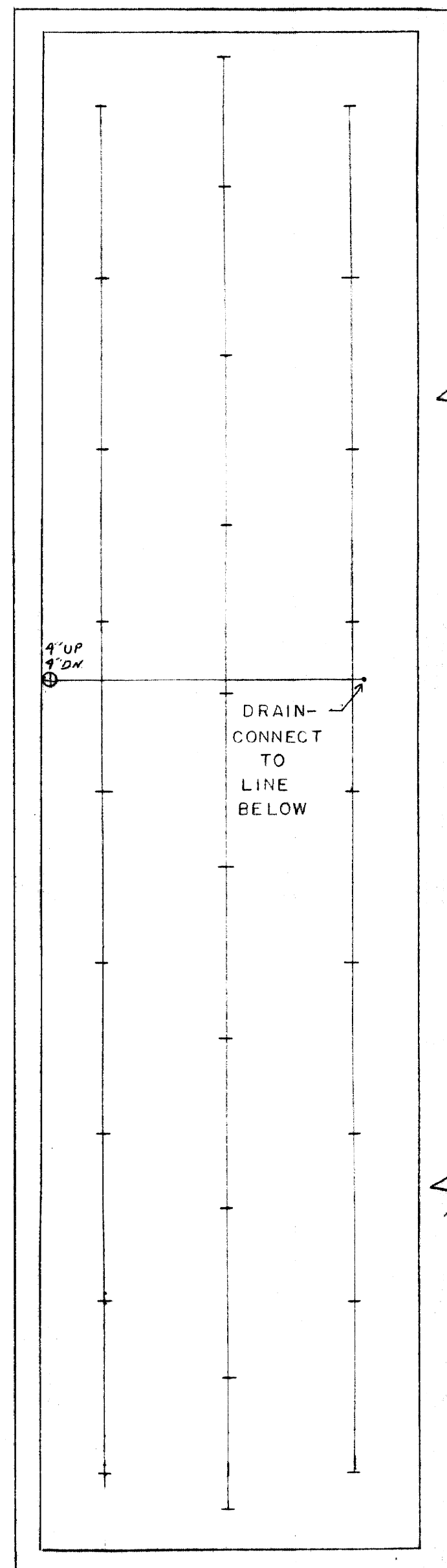
(64)



SECTION A-A

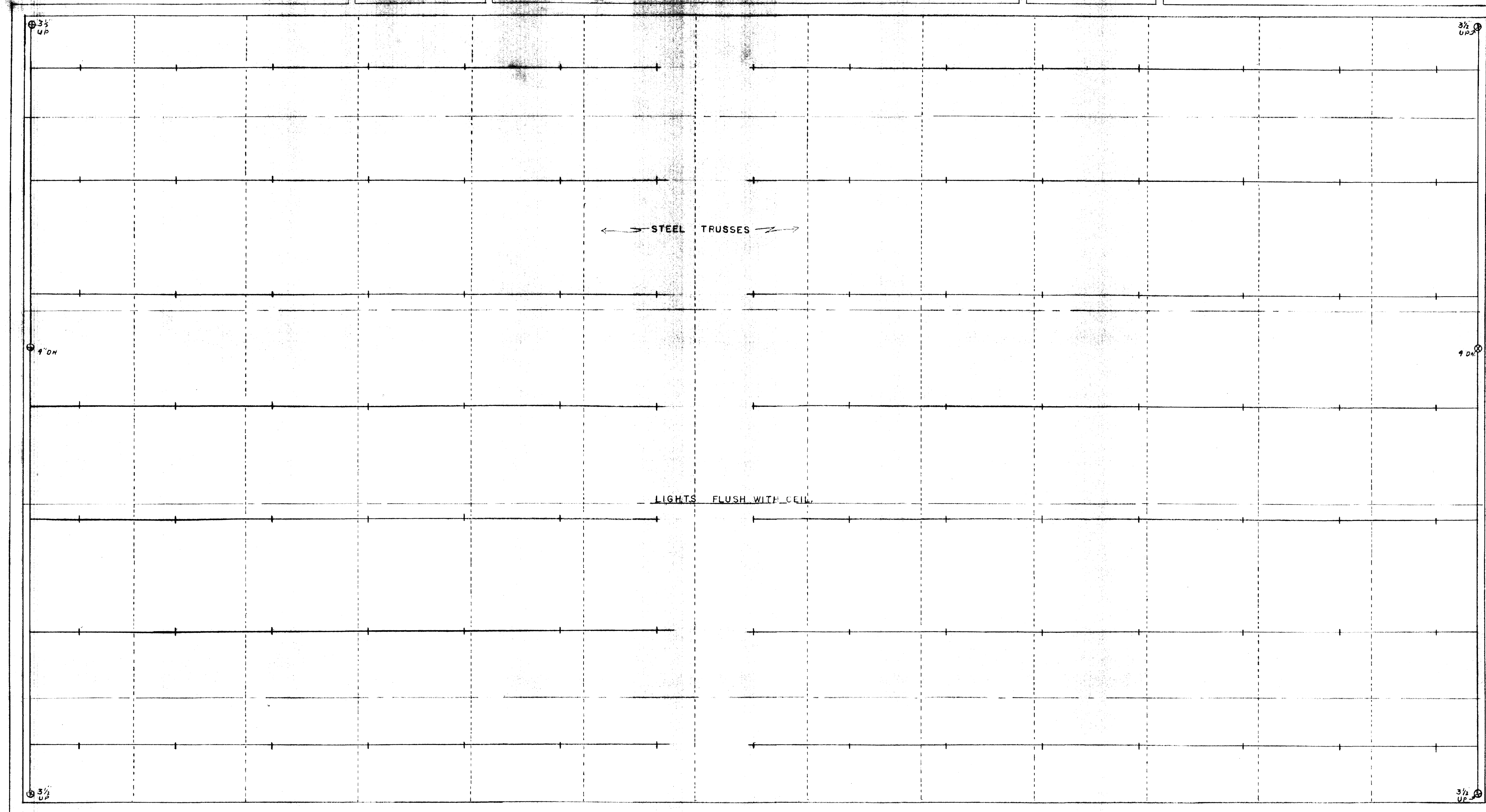
UNIVERSITY OF KENTUCKY LEXINGTON KENTUCKY		
DRAWN BY JSS	ALUMNI GYM	DATE
TRACED BY		SCALE 1/8" = 1'-0"
CHECKED BY	SPRINKLER SYSTEM	SPEC. NO.
COMMONWEALTH OF KENTUCKY DEPARTMENT OF FINANCE ENGINEERING STAFF FRANKFORT KENTUCKY		DRAWING NO. 2 OF 4
APPROVED BY <i>Ralph B. Conley</i> AGENCY HEAD	DATE 2-4-60	
APPROVED BY <i>David H. Outchell</i> CHIEF OF STAFF	DATE 2-4-60	

001117



AREA BENEATH BLEACHERS

(28)

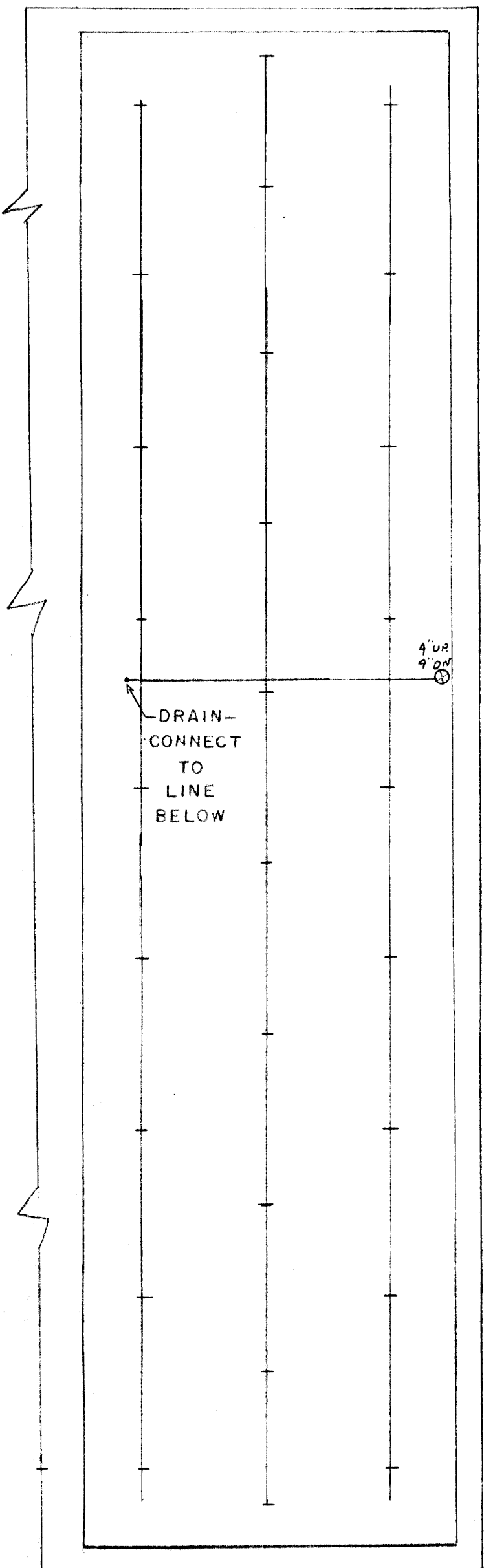


PLAYING FLOOR CEILING

(105)

- NOTE -

DUE TO THE USE OF 2 X 4s FOR CEILING JOIST,
 LINES SERVING THE PLAYING FLOOR WILL BE RUN
 IN THE ATTIC ON THE BOTTOM OF THE STEEL ROOF
 TRUSSES WITH PENDENT HEADS SPRIGED DOWN
 THROUGH THE CEILING.
 PROVIDE GUARDS FOR ALL HEADS ON THIS CEILING.



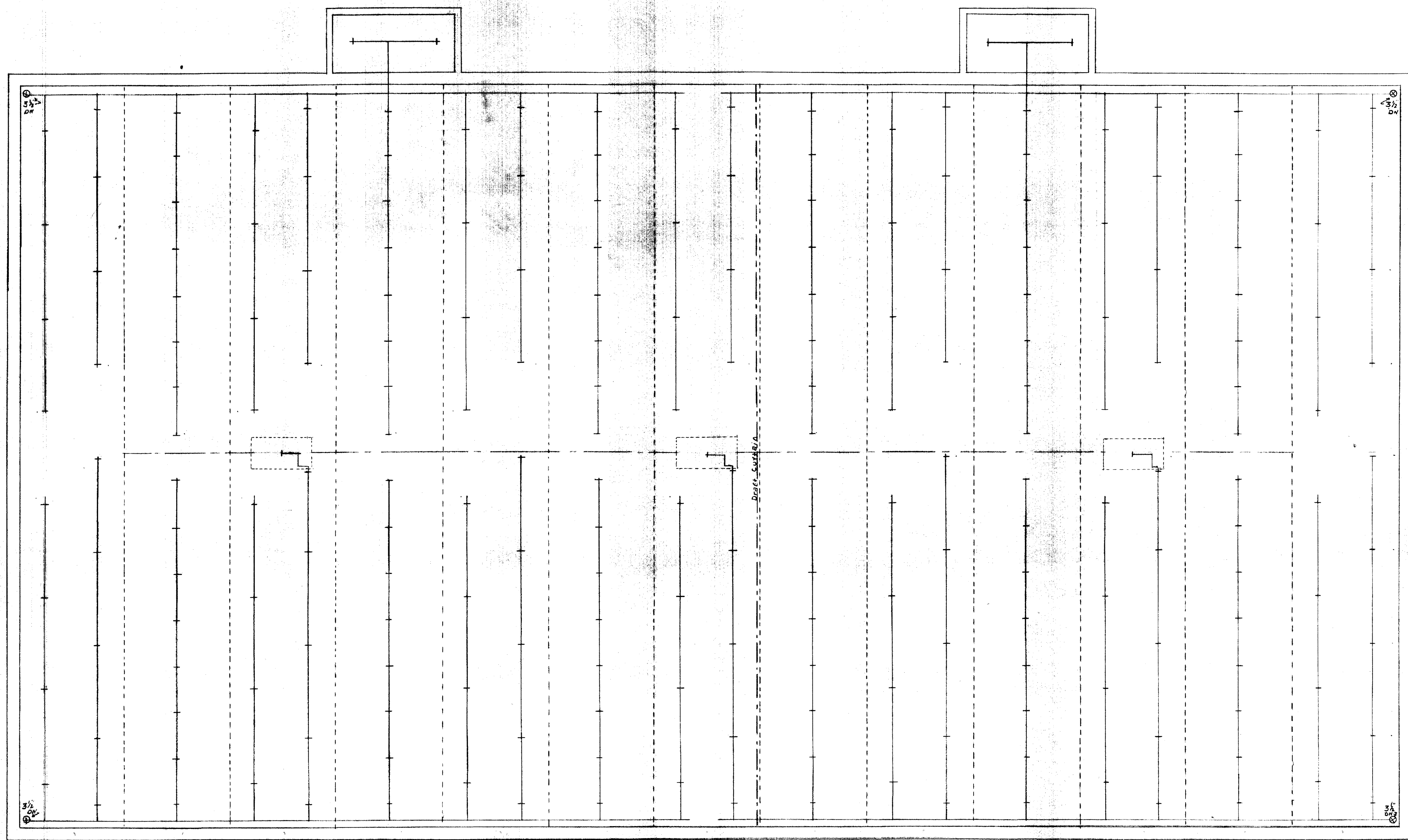
AREA BENEATH BLEACHERS

(28)

UNIVERSITY OF KENTUCKY LEXINGTON KENTUCKY		
DRAWN BY USS	ALUMNI GYM	DATE
TRACED BY	SPRINKLER SYSTEM	SCALE 1/8" = 1'-0"
CHECKED BY		SPEC. NO.
COMMONWEALTH OF KENTUCKY DEPARTMENT OF FINANCE ENGINEERING STAFF FRANKFORT KENTUCKY		DRAWING NO. 30F 4
APPROVED BY <i>Robert B. Conlee</i>	AGENCY HEAD	DATE 2-4-60
APPROVED BY <i>David H. Pritchett</i>	CHIEF OF STAFF	DATE 2-4-60

U-1260

001110



ATTIC

222

UNIVERSITY OF KENTUCKY LEXINGTON KENTUCKY		
DRAWN BY JSS	ALUMNI GYM	DATE
TRACED BY		SCALE 1/8" = 1'-0"
CHECKED BY	SPRINKLER SYSTEM	SPEC. NO.
COMMONWEALTH OF KENTUCKY DEPARTMENT OF FINANCE ENGINEERING STAFF FRANKFORT KENTUCKY		DRAWING NO. 4 OF 4
APPROVED BY <i>Ralph B. Conley</i> AGENCY HEAD	DATE 2-4-60	
APPROVED BY <i>David A. Patchett</i> CHIEF OF STAFF	DATE 2-4-60	

U-12.61