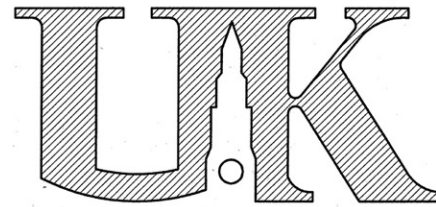


# CENTER FOR ACADEMIC AND TUTORIAL SERVICES THE CATS FACILITY



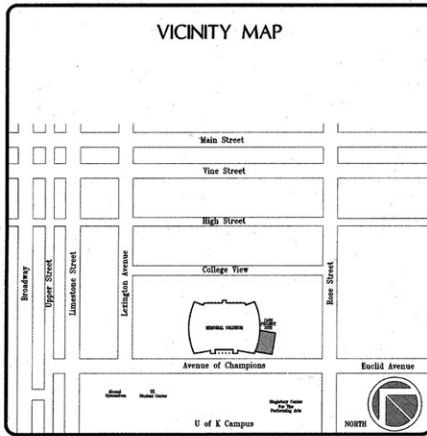
Memorial Coliseum  
University of Kentucky  
Lexington, Kentucky

OWNER:  
The University of Kentucky

UK Project No. 1588.0

C.A.T.S.  
Record Drawings  
November 19, 1998

Original Issue Date  
March 18, 1997



**INDEX TO DRAWINGS**

**STRUCTURAL**

- S-1 FIRST FLOOR FRAMING PLAN
- S-2 SECOND FLOOR FRAMING PLAN

**ARCHITECTURAL**

- N-1 WALL TYPES, GENERAL INFORMATION AND GRAPHIC COMMENTS
- D-1 FIRST FLOOR SELECTIVE DEMOLITION PLAN
- D-2 SECOND FLOOR SELECTIVE DEMOLITION PLAN
- A-1 FIRST FLOOR NEW WORK PLAN ELEVATIONS AND ROOM FINISH SCHEDULE
- A-2 SECOND FLOOR NEW WORK PLAN AND ROOM FINISH SCHEDULE
- A-3 ENLARGED FLOOR PLANS, COREWORK AND MILLWORK
- A-4 ENLARGED FLOOR PLANS AND SECTIONS
- A-5 WALL SECTIONS
- A-6 WALL SECTIONS AND DETAILS
- A-7 HORIZONTAL SECTION, STAIR AND MISCELLANEOUS DETAILS
- A-8 DOOR AND FRAME SCHEDULE
- A-9 DOOR AND FRAME DETAILS
- A-10 REFLECTED CEILING PLANS AND DETAILS

**MECHANICAL**

- ME-1 SYMBOLS AND ABBREVIATIONS
- ME-2 FIRST FLOOR PLUMBING DEMOLITION PLAN
- ME-3 FIRST FLOOR PLUMBING PLAN
- ME-4 SECOND FLOOR PLUMBING PLAN
- ME-5 BASEMENT MECHANICAL DEMOLITION PLAN AND HVAC SCHEDULES
- ME-6 FIRST FLOOR HVAC DEMOLITION PLAN AND HVAC SCHEDULES
- ME-7 ATIC HVAC DEMOLITION PLAN
- ME-8 BASEMENT MECHANICAL PLAN
- ME-9 FIRST FLOOR HVAC PLAN
- ME-10 SECOND FLOOR HVAC PLAN
- ME-11 FIRST FLOOR HIRING/SCHED PLAN
- ME-12 SECOND FLOOR HIRING/SCHED PLAN
- ME-13 HVAC DETAILS
- ME-14 HVAC PIPING SCHEMATICS AND DETAILS

**ELECTRICAL**

- ME-15 BASEMENT ELECTRICAL DEMOLITION PLAN
- ME-16 FIRST FLOOR ELECTRICAL DEMOLITION PLAN
- ME-17 SECOND FLOOR ELECTRICAL DEMOLITION PLAN
- ME-18 BASEMENT ELECTRICAL PLAN
- ME-19 FIRST FLOOR LIGHTING PLAN
- ME-20 SECOND FLOOR LIGHTING PLAN
- ME-21 FIRST FLOOR POWER AND SYSTEMS PLAN
- ME-22 SECOND FLOOR POWER AND SYSTEMS PLAN
- ME-23 COLISEUM FLOOR PLAN - ELECTRICAL
- ME-24 ELECTRICAL DETAILS

**BUILDING CODE SUMMARY**

CODE	- KENTUCKY BUILDING CODE: 1994 EDITION
USE GROUP (NEW WORK)	- E EDUCATIONAL
EXISTING USE GROUP (MEMORIAL COLISEUM)	- A-3 ASSEMBLY
BUILDING AREA	- 15,300 SQ FT
FIRST FLOOR AREA	- 10,700 SQ FT
SECOND FLOOR AREA	- 4,600 SQ FT
CONSTRUCTION TYPE	- 2C UNPROTECTED
NEW WORK WILL BE FULLY SPRINKLERED	

*Sherman Carter Barnhart* PSC  
PARTNERS IN ARCHITECTURE  
2405 HARRODSBURG ROAD LEXINGTON, KY 40504 606-224-1351

STRUCTURAL ENGINEER: POAGE ENGINEERS & ASSOCIATES, INC.  
462 EAST HIGH STREET  
LEXINGTON, KENTUCKY 40508  
(606) 255-9034

MECHANICAL/ELECTRICAL/ENGINEER: CMTA, INC.  
1409 NORTH FORBES ROAD  
LEXINGTON, KENTUCKY 40511  
(606) 253-0892

Indicates "As-Built" information supplied by the Coordinator for preparation of record drawings. This record drawing has been prepared, in part, based upon such information furnished by others. While this information is believed to be reliable, the DESIGN PROFESSIONAL cannot assure its accuracy, and thus is not responsible for the accuracy of this record drawing or for any errors or omissions which may have been incorporated into it as a result. Those relying on this record document are advised to obtain independent verification of its accuracy before applying it for any purpose.

RECORD DRAWINGS  
CATS  
SCB Project No. 9642  
SET NO.





**CENTER FOR ACADEMIC AND TUTORIAL SERVICES**  
The CATS Facility  
At Memorial Coliseum  
University of Kentucky Lexington, Kentucky  
UK Project No. 15830

**FIRST FLOOR SELECTIVE DEMOLITION PLAN**

*Sherman Carter Barnhart*  
PARTNERS IN ARCHITECTURE  
2405 HERRINGBORO ROAD - LEXINGTON, KY 40504 - PH: 606-224-1351 - FAX: 606-224-8446

JOB NO. 9642  
DATE: MARCH 18, 1997  
DRAWN: JMS  
CHECKED: JDC, HMC  
COPYRIGHT © 1997  
SHERMAN / CARTER / BARNHART, P.C.

REVISIONS  
1. ASH NO. 4 9-3-97  
2. LIMITS OF EXISTING FLOOR DEMO  
3. ADD. 4-16-97

SHEET

**D-1**

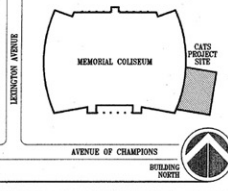
**DEMOLITION KEYNOTES**

1. REMOVE EXISTING DOOR AND FRAME. DELIVER DOOR AND HARDWARE TO OWNER.
2. REMOVE EXISTING MASONRY WALL TO LIMITS SHOWN.
3. REMOVE EXISTING MASONRY WALL IN ITS ENTIRETY. REFER TO MECH. AND ELEC. DRAWINGS FOR REQUIREMENTS PERTAINING TO CEILING FINISHES IN FIELD.
4. REMOVE EXISTING GLASS BLOCK UNITS. REMOVE ALL EXIST. CALLING AND RUST AND SCALE FROM STL. ANGLE FRAME AROUND PERIMETER OF OPENING. STEEL UNITS AND CUT STONE SILL ARE TO REMAIN.
5. NOT USED.
6. REMOVE EXIST. 1/4" FRAME AND GLASS VIEW WINDOW.
7. REMOVE EXIST. CEILING BOARDS, POOL, LADDERS AND SIMILAR POOL EQUIPMENT AND ACCESSORIES AND DELIVER TO OWNER.
8. REMOVE EXIST. TOILET PARTITION(S).
9. REMOVE EXIST. TOILET ACCESSORIES. DELIVER TO OWNER.
10. REMOVE EXIST. ACCESS DOOR.
11. REMOVE EXIST. TILE AND MASONRY BENCH IN ITS ENTIRETY.
12. REMOVE EXIST. WOOD BENCHES, CONC. STEPS, TREADS, PERFORATED STEEL, RISERS AND MISCELLANEOUS STEEL STRUCTURE SUPPORT FOR BLEACHERS IN ITS ENTIRETY.
13. REMOVE EXIST. POURED-IN-PLACE CONC. STEPS.
14. REMOVE EXIST. STEEL PIPE RAILINGS.
15. CUT AND REMOVE EXIST. STL. PIPE RAILING AND MASONRY AS REQUIRED TO CONNECT TO RAILING IN NEW WORK.
16. REMOVE EXIST. MID SET FLOOR TILE TO CONC. SUBSTRATE TO THE EXTENT SHOWN IN POOL DECK AREA.
17. REMOVE EXIST. OVERHEAD DOOR LINE. DELIVER TO OWNER. STEEL UNITS TO REMAIN.
18. REMOVE EXIST. METAL BASKET HOOKS AND WIRE BASKETS. DELIVER TO OWNER.
19. REMOVE EXIST. WALL MTD. METAL STEEL ANGLE BRACKETS.
20. REMOVE EXIST. FRAMED STL. WIRE MESH PART. IN ITS ENTIRETY.
21. REMOVE EXIST. COLUMN IN ITS ENTIRETY.
22. REMOVE EXIST. PLASTER ON METAL LATH CEILING FINISH MATERIALS IN ITS ENTIRETY. REFER TO MECH. AND ELEC. DWGS. FOR OTHER REQUIREMENTS PERTAINING TO CEILING MOUNTED AND ABOVE CEILING W/E ITEMS.
23. SAWCUT EXISTING CONC. FLOOR SLAB TO EXIST. SHOWN. COORDINATE ACTUAL SIZE OF OPENING REQUIREMENTS WITH STRUCTURAL AND MECHANICAL DRAWINGS.
24. GRIND EXISTING ABRASIVE FLOOR FINISH MATERIAL TO LEVEL WITH THAT OF ADJACENT TERRAZZO FLOOR FINISH AS REQUIRED. THIS IS AN APPROX. 3/8" WIDE LINEAR PATCH. VERIFY LOCATIONS IN FIELD.
25. EXIST. STRUCTURAL STEEL COL. TO REMAIN.
26. REMOVE EXIST. TOILET FIXTURE(S) - REFER TO MECH. FOR OTHER REQUIREMENTS.
27. ABANDON EXIST. FLOOR DRAIN - REFER TO MECH. FOR OTHER REQUIREMENTS.
28. REMOVE EXIST. JAN SINK - REFER TO MECH. FOR OTHER REQUIREMENTS.
29. REMOVE EXIST. ELEC. PANEL - REFER TO ELEC. FOR OTHER REQUIREMENTS.
30. SAW CUT AND REMOVE EXIST. REINF. CONC. SLAB TO SIZE REQUIRED FOR PLACEMENT OF REINF. CONC. FOOTINGS - SEE STRUCTURAL DRAWINGS FOR ALL REQUIREMENTS.
31. REMOVE EXISTING MASONRY WALL TO SIZE SHOWN FOR LOWER UNITS - SEE MECH. FOR OTHER REQUIREMENTS.
32. REMOVE EXISTING SHOWER HEAD - SEE MECH. FOR OTHER REQUIREMENTS.
33. REMOVE EXISTING BULLETTIN BO. - DELIVER TO OWNER.
34. REMOVE EXISTING PARAPET - SEE MECH. FOR ALL REQUIREMENTS.

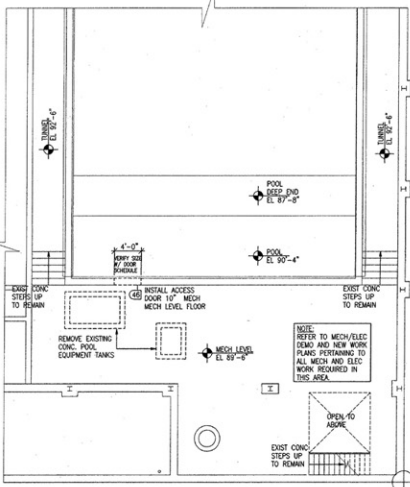
**DEMOLITION KEYNOTES**

35. SAWCUT EXIST. TERRAZZO FLOOR MATERIAL APPROX. 3 INCHES ON EACH SIDE OF TERRAZZO BASE AND REMOVE BASE AND MASONRY AT ALL WALLS SHOWN TO BE REMOVED.
36. PREPARE EXIST. CONC. FLOOR SLAB AS NECESSARY TO ACCEPT FINISH SCHEDULED IN NEW WORK.
37. SAWCUT AND REMOVE EXISTING CONC. PAVING MATERIALS TO LIMITS SHOWN.
38. REMOVE EXIST. LOW CONC. TAPERED WALL INCLUDING FOUNDATION.
39. REMOVE EXISTING PLANT MATERIALS AND EXCAVATE AS REQUIRED FOR NEW WORK.
40. NOTE: PROVIDE PROTECTION AS REQUIRED AT EXISTING TREE (TO REMAIN) DURING THE DURATION OF WORK IN THIS AREA SUCH THAT CONTINUED LIFE OF THE TREE IS MAINTAINED.
41. REMOVE EXISTING 12x12 ACQUIS TILE AND METAL SPIRUE CEILING IN ITS ENTIRETY.
42. REMOVE EXISTING REINF. CONC. WALL MATERIAL AS NECESSARY TO METAL ACCESS DOOR. PATCH WALL AS REQUIRED. DOOR SIZE: 4'-0" x 4'-0"
43. REMOVE EXISTING BUILT-IN SHOWER STALL. ABANDON EXIST. DRAIN. REFER TO MECH. FOR OTHER REQUIREMENTS.
44. REMOVE EXISTING MUDSET TILE FINISH AND CONC. SLAB AND EXCAVATE TO SIZE AND DEPTH REQUIRED AT EXISTING CURB P.S. REFER TO MECH. DWGS. FOR OTHER REQUIREMENTS PERTAINING TO PLUMB AND SEWER.
45. REMOVE EXISTING LOCKER UNITS.

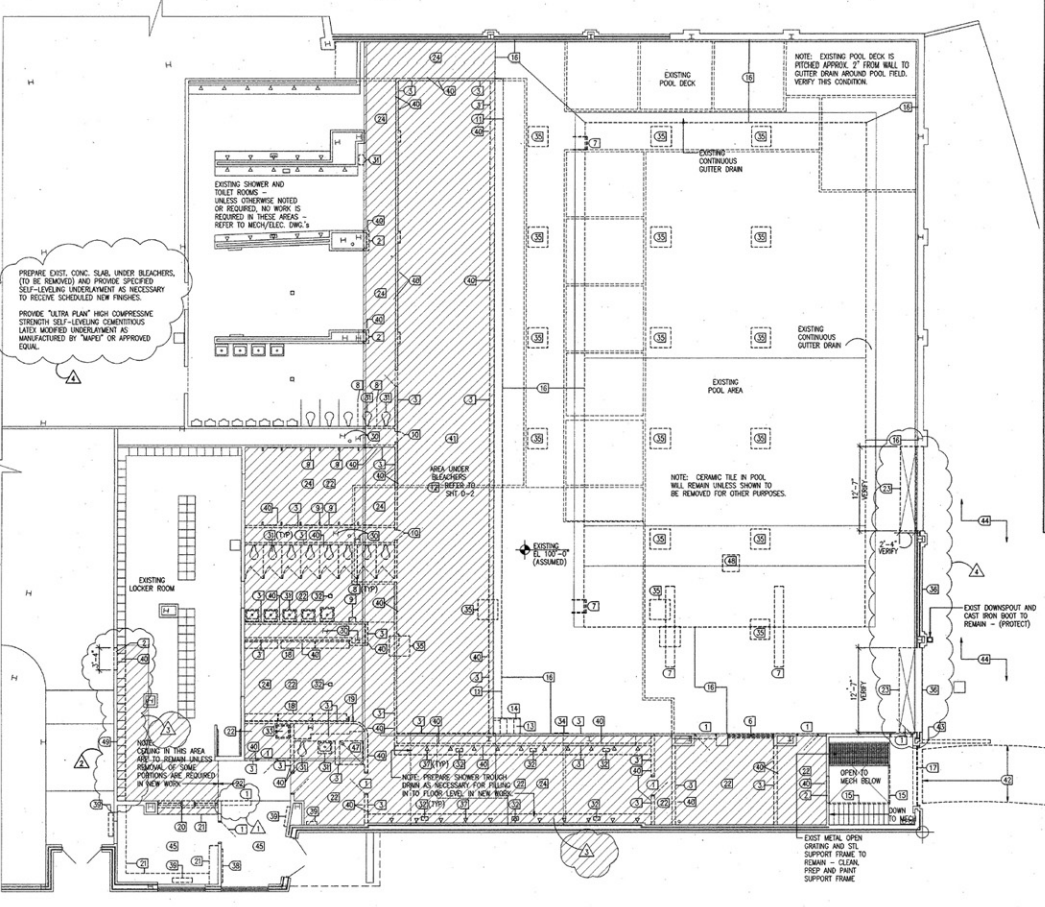
**KEY PLAN**



**DEMOLITION LEGEND**



**EXISTING MECHANICAL AND TUNNEL LEVEL SELECTIVE DEMOLITION PLAN**  
1/8" = 1'-0"



**FIRST FLOOR SELECTIVE DEMOLITION PLAN**  
1/8" = 1'-0"

1

GENERAL NOTE:  
ALL COMMUNICATION CABLES AND EQUIPMENT MUST BE DISCONNECTED BY THE OWNER. ALL WORK PERTAINING TO THIS ACTIVITY MUST BE SCHEDULED IN ADVANCE WITH UNIVERSITY OF KENTUCKY COMMUNICATIONS.

**C.A.T.S.**  
Record Drawings  
November 19, 1998

Indicates "As-Built" information supplied by the Contractor for preparation of record drawings. This record drawing has been prepared, in part, based upon such information furnished by others. While this information is believed to be reliable, the DESIGN PROFESSIONAL cannot assume its accuracy, and thus is not responsible for any errors or omissions which may have been incorporated into it as a result. Those relying on this record document are advised to obtain independent verification of its accuracy before applying it for any purpose.

**GENERAL DEMOLITION NOTES**

- GENERAL:**  
SELECTIVE DEMOLITION REFERENCE NOTES ARE INTENDED TO GENERALLY IDENTIFY THE SELECTIVE REMOVAL OF EXISTING ITEMS AT THE EXISTING BUILDING AT LOCATIONS WHERE REQUIRED AND SHALL IN NO WAY RELIEVE THE CONTRACTOR OF THE FULL RESPONSIBILITY FOR EXAMINING AND VERIFYING THE FULL EXTENT OF EXISTING CONDITIONS.
- A. REFER TO STRUCTURAL DRAWINGS FOR SPECIFIC REQUIREMENTS AT EXISTING CONDITIONS REQUIRING PATCH OR COMPLETE REMOVAL AND/OR MODIFICATION TO COMPONENTS OR ASSEMBLIES PERTAINING TO EXISTING BUILDING STRUCTURE.
  - B. REFER TO MECHANICAL AND/OR ELECTRICAL DRAWINGS FOR SPECIFIC REQUIREMENTS PERTAINING TO THE REMOVAL, RELOCATION AND/OR MODIFICATION TO OF ITEMS RELATED TO EXISTING HVAC, PLUMBING AND ELECTRICAL SYSTEMS.
  - C. REFER TO SPECIAL CONDITIONS FOR REQUIREMENTS PERTAINING TO HAZARDOUS MATERIALS.
1. MAINTAIN ALL MEANS OF EGRESS DURING EACH PHASE OF CONSTRUCTION. THE CONTRACTOR SHALL COORDINATE SEQUENCING OF ALL WORK WITH THE OWNER.
  2. CONSTRUCT TEMPORARY DUST/NOISE BARRIERS AS REQUIRED TO ENSURE THAT DEMOLITION DUST/NOISE AND / OR VIBRATION RESULTING FROM THE WORK IS CONTAINED AND SAFELY MAINTAINED WITHIN THE CONSTRUCTION LIMITS. THESE PROVISIONS TO LIMIT CONSTRUCTION NOISE TO "SILENCE" LEVELS ACCEPTABLE TO OWNER.
  3. THE CONTRACTOR SHALL BE RESPONSIBLE FOR THE REMOVAL OF ALL MATERIAL PERTAINING TO THE WORK REQUIRED FROM THE SITE. ALL REMOVED ITEMS NOT WANTED BY THE OWNER SHALL BECOME PROPERTY OF THE CONTRACTOR. AN APPROPRIATE CONTRACTOR SHALL BE SUPPLIED BY THE CONTRACTOR AND LOCATED AT THE SITE WHERE APPROVED BY THE OWNER. DISPOSAL OF CONSTRUCTION RELATED MATERIALS SHALL BE ACCOMPLISHED IN A LEGAL MANNER.
  4. ACCESS TO THE CONSTRUCTION AREA FROM THE OUTSIDE IS RESTRICTED TO TWO EXISTING SURFACES AND ONE NEW ENTRANCE AS DIRECTED BY THE OWNER. THE CONTRACTOR SHALL MAINTAIN ALL STAIRS AND CORRIDORS FOR EMERGENCY EGRESS AT ALL TIMES.
  5. THE CONTRACTOR WILL BE PERMITTED TO PERFORM LOW NOISE LEVEL CONSTRUCTION UNTIL 8:00 P.M. LOCAL TIME.
  6. NOT USED.
  7. THE CONTRACTOR SHALL BE RESPONSIBLE FOR MAINTAINING EXTERIOR CONSTRUCTION ACTIVITY AREAS AND RESTORING THEM TO THEIR ORIGINAL CONDITION ACCEPTABLE TO OWNER UPON PROJECT COMPLETION.
  8. THE CONTRACTOR SHALL BE RESPONSIBLE FOR WALL PATCHING RESULTING FROM DEMOLITION - PROVIDE WALL REPAIR AS REQUIRED TO RECEIVE NEW SCHEDULED WALL FINISHES.
  9. REFER TO SPECIAL CONDITIONS FOR REQUIREMENTS OF NOTIFICATION PERTAINING TO ANY PLANNED RELOCATION OR CHANGE OF UTILITY. COORDINATE SUCH ACTIVITIES OWNER'S REPRESENTATIVE AND LOCAL UTILITY COMPANY AS REQUIRED.
  10. UNLESS OTHERWISE NOTED, EXISTING CEILING OUTSIDE OF THE WORK AREA AND RELATED SUPPORTING SYSTEMS SHALL BE REMOVED IN ITS ENTIRETY WHERE SUCH REMOVAL IS NECESSARY FOR CONSTRUCTION. REFER TO REQUIREMENTS IN SPECIAL CONDITIONS PERTAINING TO THE REMOVAL OF EXISTING CEILING IN THE POOL AREA FOLLOWING THE COMPLETION OF SECOND FLOOR SLAB WORK.
- A. REFER TO MECHANICAL AND ELECTRICAL DRAWINGS FOR CEILING RELATED EXISTING POWER MOUNTING AND PROVISIONS TO REMAIN IN-PLACE TO BE MODIFIED, REPLACED AND / OR RELOCATED AND OTHER SPECIFIC ITEMS AS REQUIRED. UNLESS OTHERWISE NOTED, ALL ITEMS NOT INDICATED ON THE DRAWINGS SHALL BE REINSTALLED IN THE NEW CEILING AS REQUIRED.
  - B. THE WORK INCLUDES BUT IS NOT LIMITED TO THE REMOVAL OF EXISTING LIGHT FIXTURES, DIFFUSERS, RETURN AIR GRILLES, HEAT AND SMOKE SENSING AND SIGNAL AND CONTROL DEVICES, SPRINKLER HEADS AND SIMILAR ITEMS.
  - C. REFER TO MECHANICAL AND ELECTRICAL DRAWINGS FOR REQUIREMENTS PERTAINING TO THE DISCONNECTING, CAPPING, REMOVAL AND / OR REPAIR OF WIRING, CONDUIT, PIPING, AND DUCT WORK (EITHER PERMANENT OR TEMPORARY).
11. THE CONTRACTOR SHALL REMOVE ANY CEILING ADJACENT TO NEW WORK AS REQUIRED TO INSTALL MECHANICAL, ELECTRICAL STAIRS AND KENNELS / REPAIR AS REQUIRED TO MATCH ORIGINAL APPEARANCE.
  12. REMOVE ALL ELECTRICAL RECEPTACLES, COMMUNICATION SYSTEMS, SPEAKERS, FIRE AND SMOKE DETECTORS, AND LIGHTING AND TURN OVER TO OWNER.
  13. THE CONTRACTOR SHALL REMOVE EVIDENCE OF ANY LEAKS IN EXISTING ROOF TO OWNER IN WRITING. PROTECT EXISTING ROOF ASSEMBLIES DURING THE COURSE OF NEW WORK.
  14. MAINTAIN WATERPROOFING AND SECURITY OF THE EXISTING BUILDING AT ALL TIMES DURING THE COURSE OF CONSTRUCTION.
  15. PATCH ALL FLOOR FINISHES/NOISES RESULTING FROM THE REMOVAL OF MECHANICAL AND ELECTRICAL ITEMS REQUIRED TO ACCEPT NEW SCHEDULED FLOOR FINISH.
  16. ALL COMMUNICATION CABLES AND EQUIPMENT MUST BE DISCONNECTED BY THE OWNER. ALL WORK PERTAINING TO THIS ACTIVITY MUST BE SCHEDULED IN ADVANCE WITH UNIVERSITY OF KENTUCKY COMMUNICATIONS.

F:\PROJECTS\151996\9642\9642.DWG 3-17-97 2:08:42 pm EST



CENTER FOR ACADEMIC  
AND TUTORIAL SERVICES  
The CATS Facility  
At Memorial Coliseum  
University of Kentucky Lexington, Kentucky  
UK Project No. 8942

SECOND FLOOR  
SELECTIVE DEMOLITION PLAN

*Sherman Carter, Barnhart*  
P.A.R.T.N.E.R.S. I N A.R.C.H.I.T.E.C.T.U.R.E.  
2425 WINDSORBROOK ROAD • LEXINGTON, KY 40504 • PH: 606-224-1151 • FAX: 606-224-1446

JOB NO. 8942  
DATE: MARCH 18, 1997  
DRAWN: JMS  
CHECKED: J.C. MOH  
COPYRIGHT © 1997  
SHERMAN / CARTER /  
BARNHART, P.S.C.

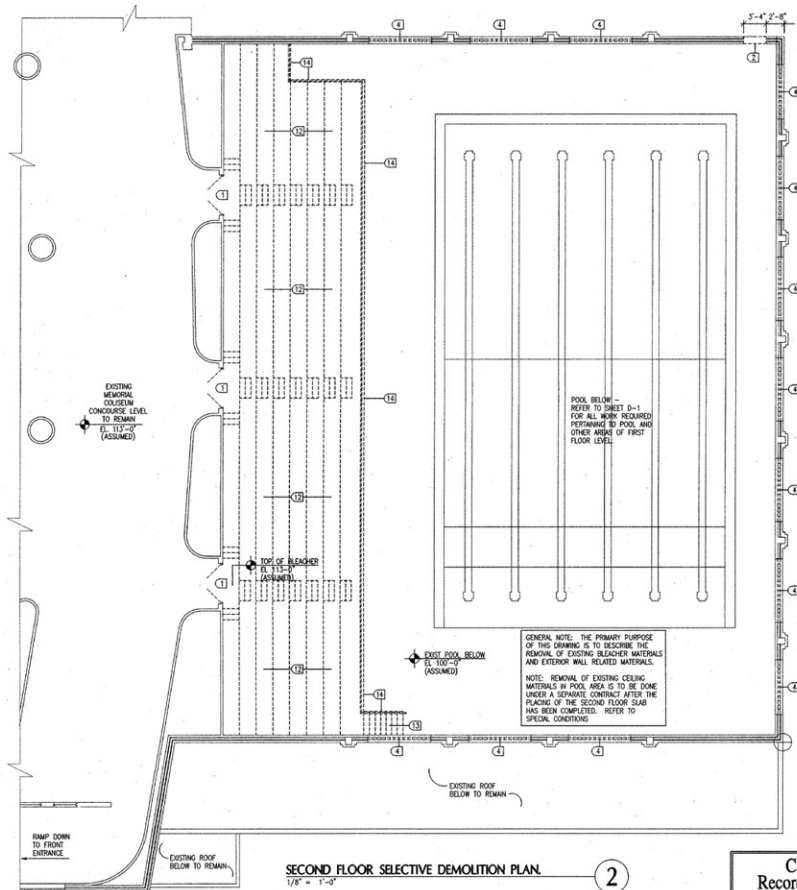
REVISIONS

SHEET  
**D-2**

- DEMOLITION KEYNOTES**
40. SAWCUT EXIST. TERRAZZO FLOOR MATERIAL APPROX. 3 INCHES ON EACH SIDE OF TERRAZZO BASE AND REMOVE BASE AND MASONRY AT ALL WALLS SHOWN TO BE REMOVED.
  41. PREPARE EXIST. CONC. FLOOR SLAB AS NECESSARY TO ACCEPT FINISH SCHEDULED IN NEW WORK.
  42. SAWCUT AND REMOVE EXISTING CONC. FINISH MATERIALS TO LIMITS SHOWN.
  43. REMOVE EXIST. LOW CONC. TAPERED WALL, INCLUDING FOUNDATION.
  44. REMOVE EXISTING PLANT MATERIALS AND EXCAVATE AS REQUIRED FOR NEW WORK.  
NOTE: PROVIDE PROTECTION AS REQUIRED AT EXISTING TREE (TO REMAIN) DURING THE DURATION OF WORK IN THIS AREA SUCH THAT CONTINUED LIFE OF THE TREE IS MAINTAINED.
  45. REMOVE EXISTING 12x12" ACQUIS TILE AND METAL SPRING CEILING IN ITS ENTIRETY.
  46. REMOVE EXISTING REINF. CONC. WALL MATERIAL AS NECESSARY TO INSTALL ACCESS DOOR. PATCH WALL AS REQUIRED. DOOR SIZE: 4'-0" x 4'-0".
  47. REMOVE EXISTING BUILT-IN SHOWER STALL. ABANDON EXIST. DRAIN. REFER TO MECH. FOR OTHER REQUIREMENTS.
  48. REMOVE EXISTING MUDSET TILE FINISH AND CONC. SLAB AND EXCAVATE TO SIZE AND DEPTH REQUIRED AT HOSTWAY SUMP PIT. REFER TO MECH. ENG. FOR OTHER REQUIREMENTS PERTAINING TO PUMP AND PIPING.
  49. REMOVE EXISTING LOCKER UNITS.

**AS-BUILT** information supplied by the Contractor for preparation of record drawings. This record drawing has been prepared, in part, based upon such information furnished by others. While this information is believed to be reliable, the DESIGN PROFESSIONAL cannot assure its accuracy, and thus is not responsible for the accuracy of this record drawing or for any errors or omissions which may have been incorporated into it as a result. Those relying on this record document are advised to obtain independent verification of its accuracy before applying it for any purpose.

- DEMOLITION KEYNOTES**
1. REMOVE EXISTING DOOR AND FRAME. DELIVER DOOR AND HARDWARE TO OWNER.
  2. REMOVE EXIST. MASONRY WALL TO LIMITS SHOWN. REFERENCE NOTE (42).
  3. REMOVE EXISTING MASONRY WALL IN ITS ENTIRETY. REFERENCE NOTE (42).
  4. REMOVE EXISTING GLASS BLOCK UNITS. REMOVE ALL EXIST. CALULING AND RUST AND SCALE FROM STEEL ANGLE FRAME AROUND PERIMETER OF EXISTING STEEL LINTEL AND CUT STONE SILL AND TO REMAIN.
  5. NOT USED.
  6. REMOVE EXIST. HM FRAME AND GLASS VIEW WINDOW. REFERENCE NOTE (42).
  7. REMOVE EXIST. DRAB. BOARDS, POOL, LADDERS AND SIMILAR POOL EQUIPMENT AND ACCESSORIES AND DELIVER TO OWNER.
  8. REMOVE EXIST. TOILET PARTITION(S).
  9. REMOVE EXIST. TOILET ACCESSORIES. DELIVER TO OWNER.
  10. REMOVE EXIST. ACCESS DOOR.
  11. REMOVE EXIST. TILE AND MASONRY BENCH IN ITS ENTIRETY.
  12. REMOVE EXIST. WOOD BENCHES, CONC. STEPS, TREADS, PERFORATED STEEL FEEDERS AND MISCELLANEOUS STEEL STRUCTURE SUPPORT FOR BLEACHERS IN ITS ENTIRETY.
  13. REMOVE EXIST. POURED-IN-PLACE CONC. STEPS.
  14. REMOVE EXIST. STEEL PIPE RAILINGS.
  15. CUT AND REMOVE EXIST. STL. PIPE RAILING AND MUDSET AS REQUIRED TO CONNECT TO RAILING IN NEW WORK.
  16. REMOVE EXIST. MUD SET FLOOR TILE TO CONC. SUBSTRATE TO THE EXTENT SHOWN IN POOL DECK AREA.
  17. REMOVE EXIST. OVERHEAD DOOR UNIT. DELIVER TO OWNER. STEEL LINTEL TO REMAIN.
  18. REMOVE EXIST. METAL BASKET RACKS AND WIRE BASKETS. DELIVER TO OWNER.
  19. REMOVE EXIST. WLD. METAL STEEL ANGLE BRACKETS.
  20. REMOVE EXIST. FRAMED STL. WIRE MESH PART. IN ITS ENTIRETY.
  21. REMOVE EXIST. COUNTER IN ITS ENTIRETY.
  22. REMOVE EXIST. PLASTER ON METAL LATH CEILING FINISH MATERIALS IN ITS ENTIRETY. REFER TO MECH. AND ELEC. DWGS. FOR OTHER REQUIREMENTS PERTAINING TO CEILING MOUNTED AND ABOVE CEILING W/E. ITEMS.
  23. SAWCUT EXISTING CONC. FLOOR SLAB TO EXTENT SHOWN. COORDINATE ACTUAL SIZE OF OPENING REQUIREMENTS WITH STRUCTURAL AND MECHANICAL DRAWINGS.
  24. GRIND EXISTING ABRASIVE FLOOR FINISH MATERIAL TO LEVEL WITH THAT OF ADJACENT TERRAZZO FLOOR FINISH AS REQUIRED. THIS IS AN APPROX. 30" WIDE LINEAR PATCH. VERIFY LOCATIONS IN FIELD.
  30. EXIST. STRUCTURAL STEEL COL. TO REMAIN.
  31. REMOVE EXIST. TOILET FIXTURE(S) - REFER TO MECH. FOR OTHER REQUIREMENTS.
  32. ABANDON EXIST. FLOOR DRAIN - REFER TO MECH. FOR OTHER REQUIREMENTS.
  33. REMOVE EXIST. JAN SINK - REFER TO MECH. FOR OTHER REQUIREMENTS.
  34. REMOVE EXIST. ELEC. PANEL - REFER TO ELEC. FOR OTHER REQUIREMENTS.
  35. SAW CUT AND REMOVE EXIST. REINF. CONC. SLAB TO SIZE REQUIRED FOR PLACEMENT OF REINF. CONC. FOOTINGS - SEE STRUCTURAL DRAWINGS FOR ALL REQUIREMENTS.
  36. REMOVE EXISTING MASONRY WALL TO SIZE SHOWN FOR LOCKER UNITS - SEE MECH. FOR OTHER REQUIREMENTS.
  37. REMOVE EXISTING SHOWER HEAD - SEE MECH. FOR OTHER REQUIREMENTS.
  38. REMOVE EXISTING BULLETIN BD. - DELIVER TO OWNER.
  39. REMOVE EXISTING RADIATOR - SEE MECH. FOR ALL REQUIREMENTS.

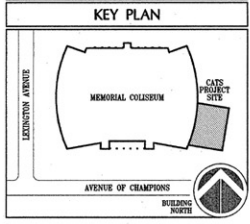


SECOND FLOOR SELECTIVE DEMOLITION PLAN  
1/8" = 1'-0"

C.A.T.S.  
Record Drawings  
November 19, 1998

**DEMOLITION LEGEND**

	REFERENCED KEYNOTE
	EXISTING WALL TO REMAIN
	EXISTING WALL TO BE REMOVED
	EXISTING STRUCTURAL STEEL TO REMAIN
	EXISTING DOOR AND FRAME TO REMAIN
	EXISTING DOOR AND/OR FRAME TO BE REMOVED

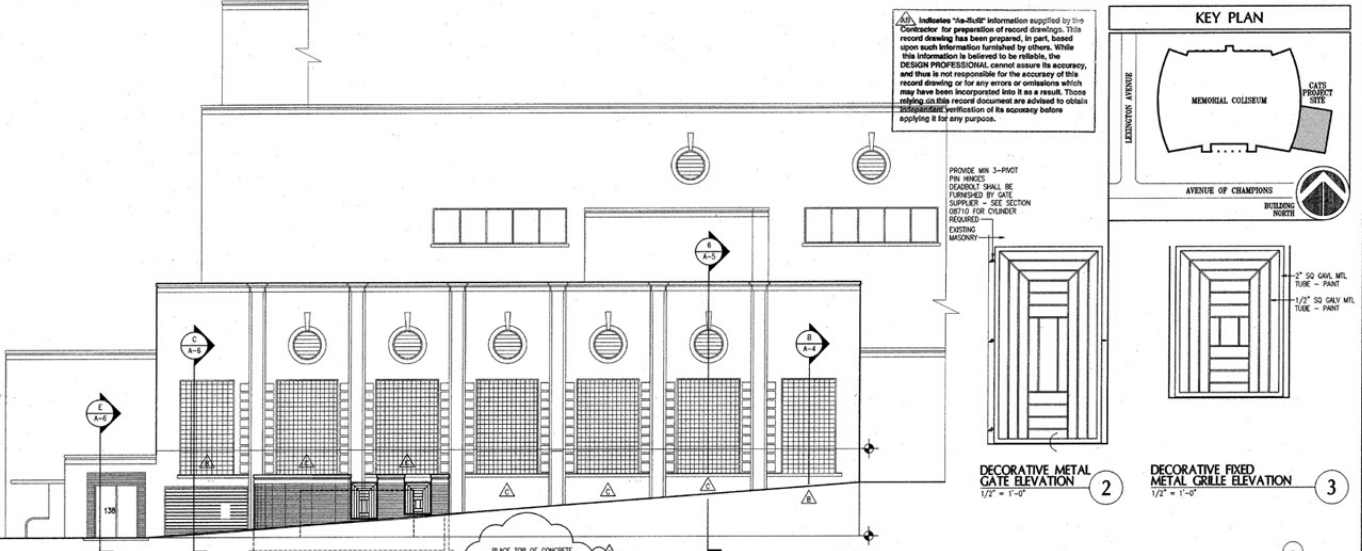


P:\PROJECTS\1998\308\308E\308E.DWG 3/17/97 10:34:30 AM R.S.1

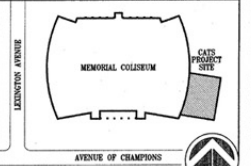
C.A.T.S. - SHEET - Document ID: 010774

**ROOM FINISH SCHEDULE**

PLAN LEGEND		FINISH GROUP		FINISH GROUP	
ROOM NAME	FINISH GROUP	FINISH GROUP	FINISH GROUP	FINISH GROUP	FINISH GROUP
FLOOR	EXISTING FLOOR	FLOOR	EXISTING FLOOR	FLOOR	EXISTING FLOOR
BASE	6" RESAL COAT	BASE	6" RESAL COAT	BASE	6" RESAL COAT
WALLS	SEM-GLOSS PAINT ON CIP SD	WALLS	SEM-GLOSS PAINT ON CIP SD	WALLS	SEM-GLOSS PAINT ON CIP SD
CEILING	2 x 2 ACQUIS TILE ON METAL SUSP SYSTEM	CEILING	2 x 2 ACQUIS TILE ON METAL SUSP SYSTEM	CEILING	2 x 2 ACQUIS TILE ON METAL SUSP SYSTEM
CEILING HT REFER TO FLOOR PLAN					
FINISH REMARKS: PROVIDE CONTINUOUS WALL WITH CHAIR RAIL IN PROJECT ROOM-125. REFER TO DET 17/A-3					



**KEY PLAN**



**GENERAL NOTES**

1. ALL DIMENSIONS ARE TO FACE OF STUDY.
2. CENTERLINE OF STRUCTURAL STEEL AND FACE OF EXISTING WALL MEMBERS UNLESS OTHERWISE NOTED.
3. WHERE MILLWORK ITEMS ARE NOTED, REFER TO CADDWORK AND MILLWORK SCHEDULE ON SHEET A-3 FOR REFERENCE TO ALL OTHER REQUIREMENTS PERTAINING TO EACH MILLWORK ITEM.
4. REFER TO SPECIALTY SCHEDULE ON SHEET A-3 FOR MORE SPECIFIC DESCRIPTION OF SPECIALTY ITEMS.

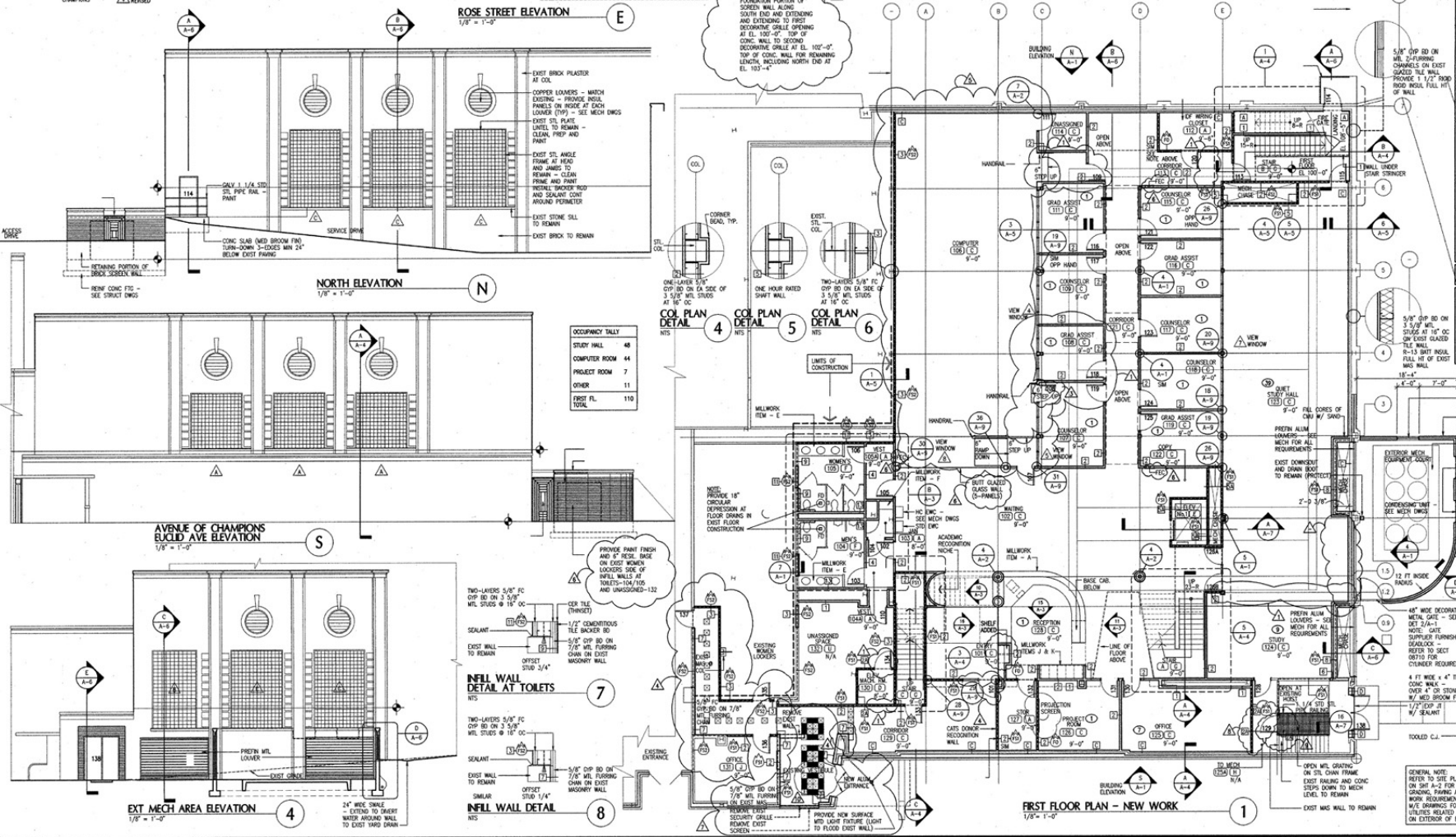
**INFORMATION INDEX**

- THE FOLLOWING INDEX IS INTENDED TO HELP THE USER OF THESE DOCUMENTS TO FURTHER UNDERSTAND MORE SPECIFIC REQUIREMENTS PERTAINING TO MATERIALS AND COMPONENTS SHOWN ON THIS DRAWING. CONTRACTORS ARE ENCOURAGED TO USE THIS DRAWING AS A GENERAL GUIDE TO THE WORK REQUIRED.
- REFER TO SHEET A-1 FOR GENERAL INFORMATION AND GRAPHIC CONVENTIONS THAT ARE USED THROUGHOUT THIS PROJECT.
- EXISTING CONDITIONS AND SELECTIVE DEMOLITION - REFER TO SHEETS 0-1 AND 0-2
  - ▨ EXISTING WALL CONSTRUCTION TO REMAIN
  - ▩ WALL TYPES - REFER TO SHEET N-1
  - DOOR NO - DOORS AND HOLLOW METAL FRAMES - REFER TO SHEET A-4 AND A-9
  - △ INTERIOR VIEW WINDOWS - REFER TO SHEET A-8
  - ▽ WINDOWS - REFER TO SHEET A-8
  - TOILET ACCESSORIES - REFER TO TOILET ACCESSORY SCHEDULE ON SHEET A-3 AND EXPANDED PLANS - D BY LATHY
  - ◇ ACCESS DOOR - REFER TO ACCESS DOOR SCHEDULE ON SHEET A-2, D BY LATHY
- CONTROL AND OTHER DESIGN JOINT DETAILS. REFER TO SHEET N-1
- FINISHES - REFER TO ROOM FINISH SCHEDULES ON SHEETS A-1 AND A-2
- CADDWORK AND MILLWORK - REFER TO SHEET A-3
- STAIRS - REFER TO SHEET A-4
- ELEVATOR AND HOSTWAY - REFER TO SHEET A-7
- SITE DEVELOPMENT - SITE GRADING AND SITE DRAINAGE. FRAME REFER TO SHEET A-1, A-2 AND SITE UTILITIES - REFER TO MECHANICAL DRAWINGS
- STRUCTURAL SYSTEM INCLUDING STRUCTURAL CONCRETE AND STRUCTURAL STEEL - REFER TO STRUCTURAL DRAWINGS
- MEDICAL SYSTEM INCLUDING SITE UTILITIES REFER TO MECHANICAL DRAWINGS
- ELECTRICAL SYSTEM INCLUDING SITE UTILITIES REFER TO ELECTRICAL DRAWINGS
- WALL / PARTITION FINISH DESCRIPTION
- FD - UNBATED SPECIFIC FIRE SEPARATION
- FD - ONE-HOUR RATED FIRE SEPARATION WALL
- FD - TWO-HOUR RATED FIRE SEPARATION WALL
- REC - FIRE EXTINGUISHER CABINET

**LEGEND**

ROOM NAME	FINISH GROUP
□	CEILING HT
▨	CADDWORK/MILLWORK ITEM
▩	ITEM NOT-IN-CONTRACT (N/C)
▭	EXISTING STRUCTURAL STEEL

**C.A.T.S.**  
Record Drawings  
November 19, 1998



**CENTER FOR ACADEMIC AND TUTORIAL SERVICES**  
The CATS Facility  
At Memorial Coliseum  
University of Kentucky Lexington, Kentucky  
UK Project No. 5800

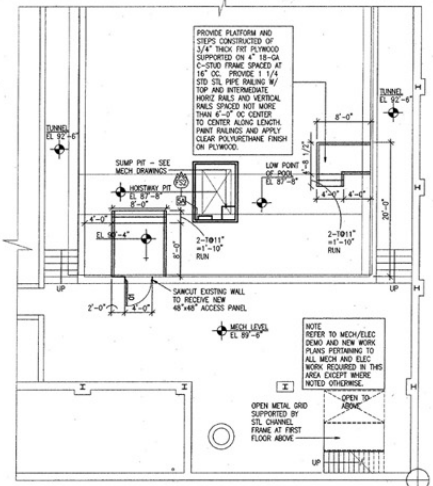
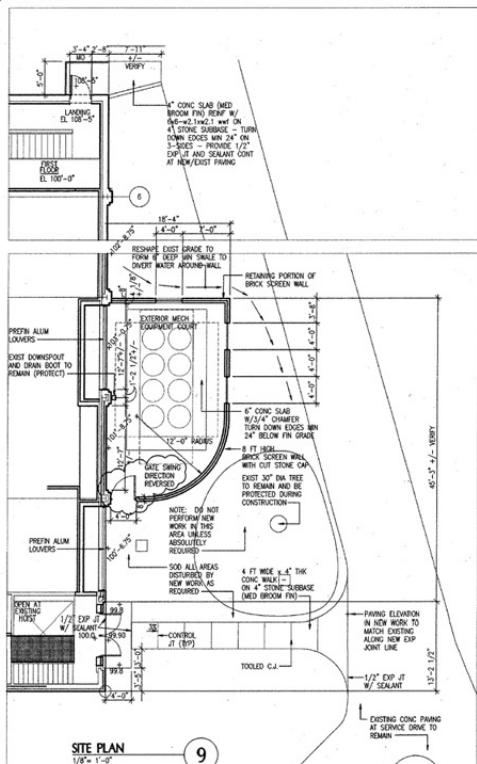
**FIRST FLOOR NEW WORK PLAN ELEVATIONS AND ROOM FINISH SCHEDULE**

*Shelma Carter Barnhart*  
PARTNERS IN ARCHITECTURE  
2405 HERRINGBORO ROAD - LEXINGTON, KY 40504 - PH: 606-224-1331 - FAX: 606-224-9446

**REVISIONS**

NO.	DATE	DESCRIPTION
1	6-30-97	ASD NO. 1
2	7-31-97	ASD NO. 2
3	9-15-97	ASD NO. 3
4	10-29-97	ASD NO. 4
5	11-25-97	ASD NO. 5
6	12-30-97	ASD NO. 6

**A-1**



ROOM FINISH SCHEDULE			
FINISH GROUP	ROOM NAME FINISH	FINISH GROUP (A) PARTIALLY FINISHED SPACE	FINISH GROUP (B) UNREINFORCED FLOOR
		FLOOR	FLOOR
FINISH GROUP (A)	FLOOR	EXISTING NONE REQUIRED	NONE REQUIRED
	BASE	6" RESL. CONE	NONE REQUIRED
	WALLS	SEMI-GLOSS PAINT ON C/P BO	NONE REQUIRED
	CEILING	2 x 2 ACCESS TILE ON METAL SUSP. SYSTEM	NONE REQUIRED
	CEILING HT	REFER TO FLOOR PLAN	REFER TO FLOOR PLAN
FINISH GROUP (B)	FLOOR	NONE USED	FLOOR CARPET
	BASE	-	BASE 6" RESL. CONE
	WALLS	-	WALLS SEMI-GLOSS PAINT ON C/P BO
	CEILING	-	CEILING 2 x 2 ACCESS TILE ON METAL SUSP. SYSTEM
	CEILING HT	REFER TO FLOOR PLAN	CEILING HT REFER TO FLOOR PLAN

**GENERAL NOTES**

- DO NOT SCALE DRAWINGS.
- ALL CHANGINGS ARE TO FACE OF STUDY. CENTERLINE OF STRUCTURAL STEEL AND/OR FACE OF EXISTING WALL MATERIALS UNLESS NOTED OTHERWISE.
- WHERE MILLWORK ITEMS ARE NOTED, REFER TO CASEWORK AND MILLWORK SCHEDULE ON SHEET A-3 FOR REFERENCE TO ALL OTHER REQUIREMENTS PERTAINING TO EACH MILLWORK ITEM.
- REFER TO SPECIFICATIONS SCHEDULE ON SHEET A-3 FOR MORE SPECIFIC DESCRIPTION OF SPECIALTY ITEMS.

**INFORMATION INDEX**

THE FOLLOWING INDEX IS INTENDED TO HELP THE USER OF THESE DOCUMENTS TO FURTHER UNDERSTAND MORE SPECIFIC REQUIREMENTS PERTAINING TO MATERIALS AND COMPONENTS SHOWN ON THIS DRAWING. COMPONENTS ARE ENCLOSED TO USE THIS DRAWING AS A GENERAL GUIDE TO THE WORK REQUIRED.

REFER TO SHEET A-1 FOR GENERAL INFORMATION AND GRAPHIC CONVENTIONS THAT ARE USED THROUGHOUT THIS PROJECT.

EXISTING CONDITIONS AND SELECTIVE DEMOLITION - REFER TO SHEETS D-1 AND D-2.

EXISTING WALL CONSTRUCTION TO REMAIN

WALL TYPES - REFER TO SHEET N-1.

000 DOOR NO. = DOORS AND HOLLOW METAL FRAMES - REFER TO SHEET A-8 AND A-9.

▲ INTERIOR VIEW WINDOWS - REFER TO SHEET A-8.

▲ WINDOWS - REFER TO SHEET A-8.

Ⓜ TAULT ACCESSORIES - REFER TO TAULT ACCESSORY SCHEDULE ON SHEET A-3 AND ENLARGED PLANS - TO ID BY NUMBER.

Ⓜ ACCESS DOOR - REFER TO ACCESS DOOR SCHEDULE ON SHEET A-1 - ID BY NUMBER.

CONTROL AND OTHER DESIGN JOINT DETAILS - REFER TO SHEET N-1.

FINISHES - REFER TO ROOM FINISH SCHEDULES ON SHEETS A-1 AND A-2.

CASEWORK AND MILLWORK - REFER TO SHEET A-3.

STAIRS - REFER TO SHEET A-4.

ELEVATOR AND HOISTWAY - REFER TO SHEET A-7.

SITE DEVELOPMENT - SITE GRADING AND SITE DRAINAGE, DRAWING REFER TO SHEETS A-1, A-2 AND SITE UTILITIES - REFER TO MECHANICAL DRAWINGS.

STRUCTURAL SYSTEM INCLUDING STRUCTURAL CONCRETE AND STRUCTURAL STEEL - REFER TO STRUCTURAL DRAWINGS.

MECHANICAL SYSTEM INCLUDING SITE UTILITIES - REFER TO MECHANICAL DRAWINGS.

ELECTRICAL SYSTEM INCLUDING SITE UTILITIES - REFER TO ELECTRICAL DRAWINGS.

WALL / PARTITION TYPING DESIGNATION: FD = UNRATED SPECIFIC USE SEPARATION; FS = ONE-HOUR RATED FIRE SEPARATION WALL; F2 = TWO-HOUR RATED FIRE SEPARATION WALL.

I EXISTING STRUCTURAL STEEL.

**LEGEND**

ROOM NAME (200) FINISH GROUP (200) CEILING HT.

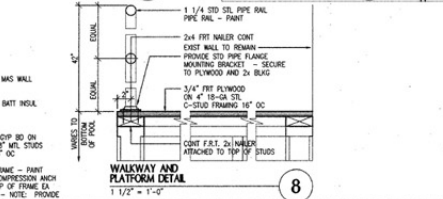
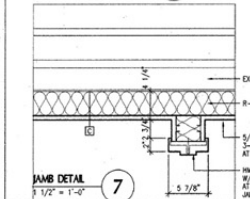
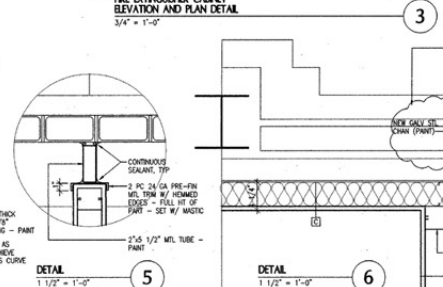
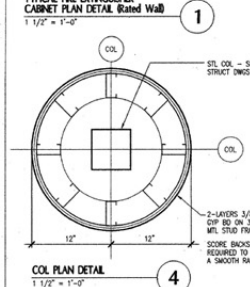
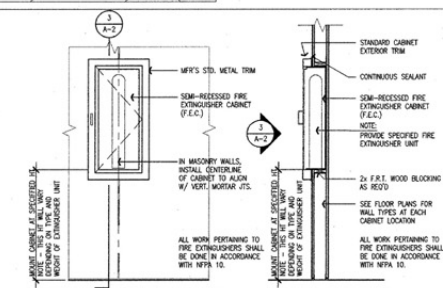
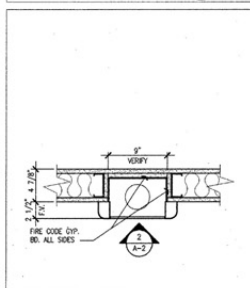
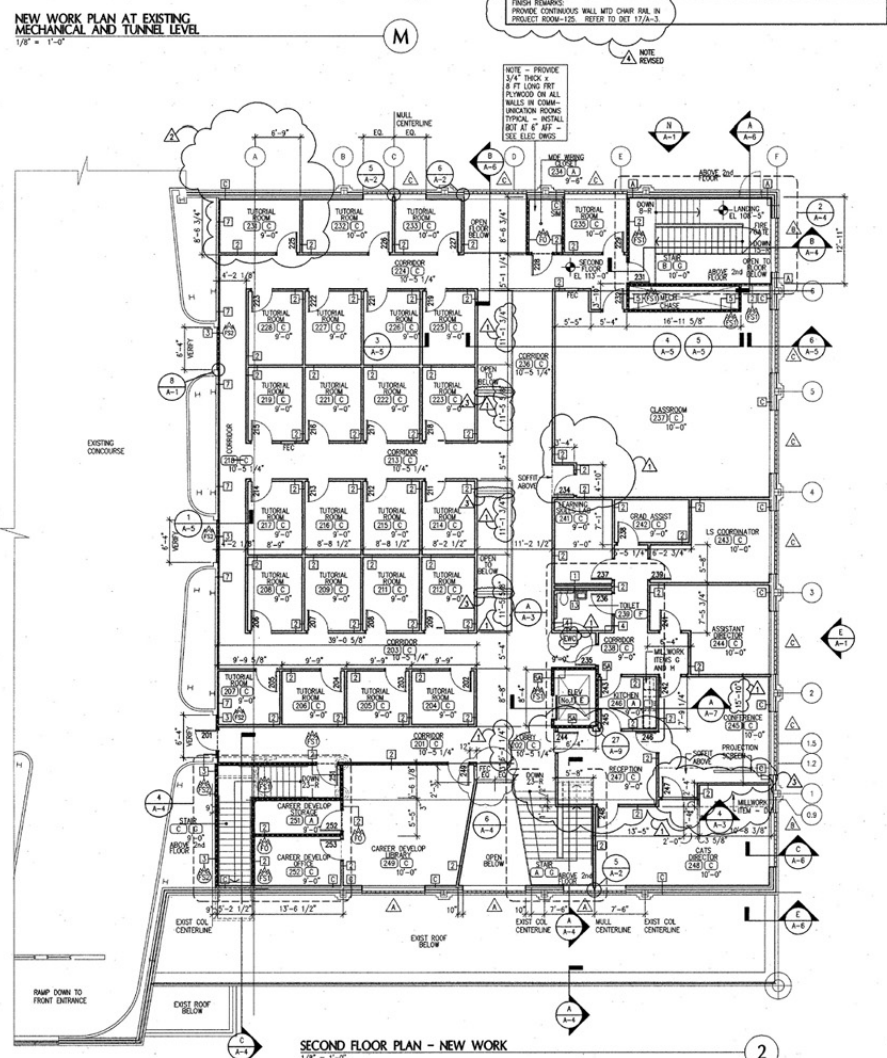
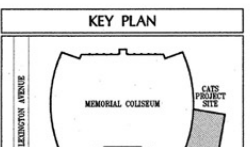
○ CASEWORK/MILLWORK ITEM

○ ITEM NOT-IN-CONTACT (NWC)

I EXISTING STRUCTURAL STEEL

Indicates "As-Built" information supplied by the Contractor for preparation of record drawings. This record drawing has been prepared in compliance with the information furnished by others. While this information is believed to be reliable, the DESIGN PROFESSIONAL CANNOT ASSURE ITS ACCURACY, and thus is not responsible for the accuracy of this record drawing or for any errors or omissions which may have been incorporated into it as a result. Those relying on this record document are advised to obtain independent verification of its accuracy before applying it for any purpose.

**C.A.T.S. Record Drawings**  
November 19, 1998



**CENTER FOR ACADEMIC AND TUTORIAL SERVICES AND THE CATS FACILITY**  
At Memorial Coliseum  
University of Kentucky  
Lexington, Kentucky  
40506-2244

**SECOND FLOOR NEW WORK PLAN AND ROOF PLANS AND ROOM FINISH SCHEDULE**

**Sheepman-Carter-Barnhart**  
PARTNERS IN ARCHITECTURE  
2402 HARRISBURG ROAD - LEXINGTON, KY 40504 - PH: 606-224-1351 - FAX: 606-224-8446

JOB NO. 9642  
DATE: MARCH 16, 1997  
DRAWN: CM, TSS, JAS  
CHECKED: JOC, NCH  
COPYRIGHT © 1997  
SHEPMAN / CARTER / BARNHART, PSC

REVISIONS  
▲ AS NO. 1: 6-30-97  
▲ AS NO. 2: 7-23-97  
▲ AD1.6: 4-16-97  
▲ ITEM #2

**A-2**

# CASEWORK and MILLWORK notes

- GENERAL: Millwork items shown describe sizes required and overall design intended for each item respectively. Contractor shall coordinate specific requirements (clearances, electrical, and plumbing) with specific equipment and fixtures that are integral with casework and millwork.
- Unless noted otherwise, all millwork items shall be plastic laminate finish on all "exposed to view" surfaces on specified substrate material and constructed with support and subframing detailed in accordance with the highest standards of the cabinet-making industry.
  - Countertop height at handicapped casework shall not exceed 34" and dimension above finish floor at knee space not less than 29" clearance for handicapped access.
  - Provide backplashes and sideplashes when abutting sidewalls at all countertops up unless noted otherwise.
  - Space above wall cabinets shall be closed to the ceiling with a bulkhead, constructed of 5/8" gypsum board on 2-1/2" metal stud framing at 16" o.c. See Reflected Ceiling Plan for locations. Install gypsum board on studs minimum 6 inches above scheduled ceiling height.
  - Provide one (1) adjustable shelf at base cabinets except where sink bases and drawer bases are shown.
  - Provide one (1) and two (2) adjustable shelves at 15 and 30 inch high wall cabinets respectively.
  - Filler panels shall match casework finish and materials and be sized as required to achieve a neat closure.
  - Provide horizontal panels at top and bottom of all wall filler panels. Bottom panel shall match finish of bottom of wall cabinets.
  - Resilient base finish required is not included in work pertaining to casework and millwork.
  - Wall supported fixed shelving: Shelving - All shelving shown is laminate clad 3/4" thick plywood with 1x4 hardwood around perimeter edge on bottom face, unless noted otherwise.

CASEWORK AND MILLWORK SCHEDULE					
ITEM ID	ITEM	FINISH MATERIAL	ITEM DESCRIPTION	ITEM LOCATION	REMARKS
A	CASEWORK	PLAS LAMINATE	PLYWOOD	ROOM 128	7' 8 1/2" / A-3
B	CASEWORK	PLAS LAMINATE	PLYWOOD	ROOM 106	6' / A-3
C	CASEWORK	PLAS LAMINATE	N/A	ROOM 106	9' / A-3
D	CASEWORK	PLAS LAMINATE	PLYWOOD	ROOM 248	4' / A-3
E	LAV COUNTER	PLAS LAMINATE	N/A	ROOM 104/105	2' / A-3
F	SHELVING	PLYWOOD	N/A	ROOM 103	12' / A-3
G	RECEPTION	PLAS LAMINATE	PART BD	ROOM 246	1 1/2' / A-3
H	RECEPTION	PLAS LAMINATE	PART BD	ROOM 128	30" DEPTH
I	MILL SLOTS	PLAS LAMINATE	PLYWOOD	ROOM 128	HARDBOARD SPACERS
L	CHAR. RAIL	N/A	HARDWOOD	SEE REVISION 10	17A-3

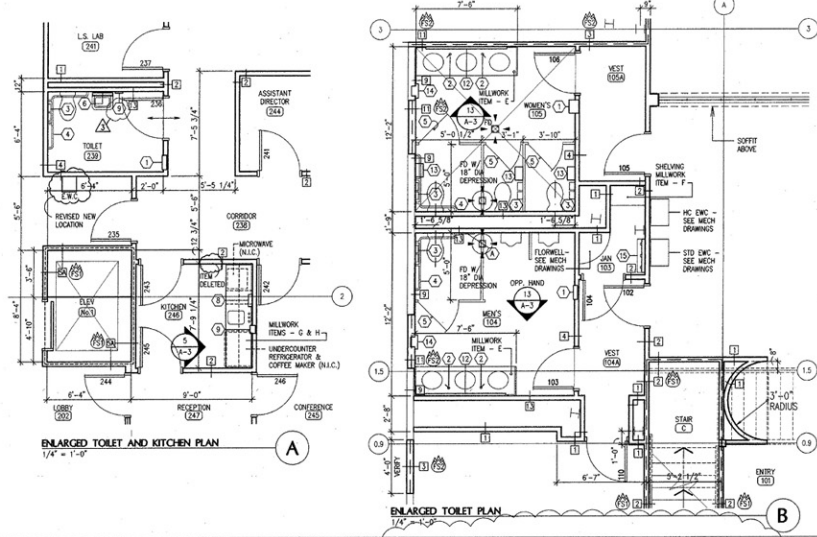
SPECIALTIES SCHEDULE					
ITEM ID	ITEM	FINISH MATERIAL	ITEM DESCRIPTION	ITEM LOCATION	REMARKS
FCC	FIRE EXT.	METAL	PAINTED	SEE DETAIL	6' / A-2
PRO	PROTECTION	METAL	PAINTED	96" TO BOTTOM	6' / A-10
FE	FIRE EXT.	METAL	PAINTED	N/A	N/A

ACCESS DOOR SCHEDULE					
DOOR TYPE	SIZE	MATERIAL	FRAME	WALL TYPE	REMARKS
A	16" x 16"	METAL	METAL	13	① ②
B	48" x 48"	METAL	METAL	13	① ②

ACCESS DOOR NOTES:  
 Unless Noted Otherwise:  
 1. Provide lockable Units.  
 2. Provide manufacturer's standard hardware.  
 3. Field point door and frame.

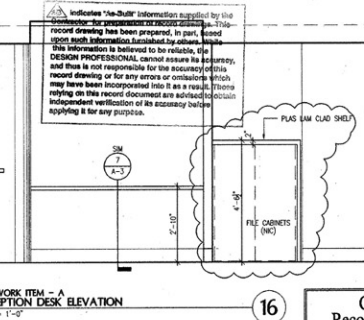
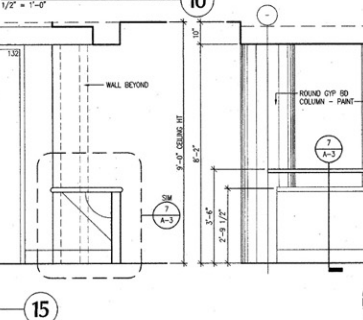
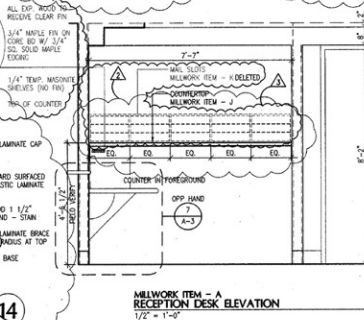
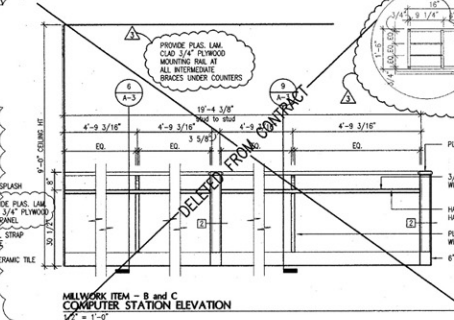
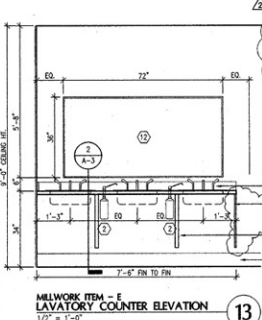
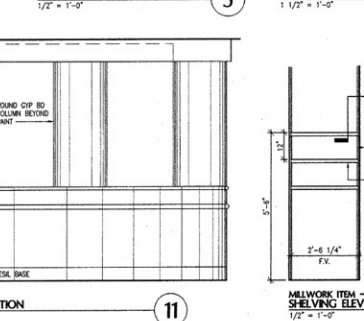
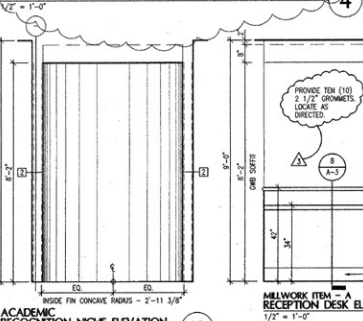
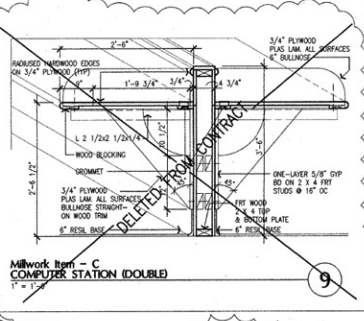
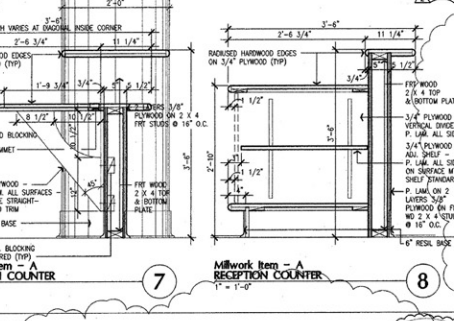
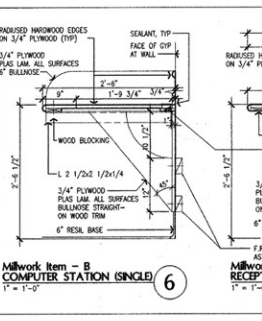
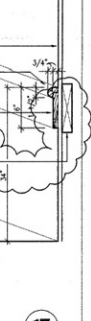
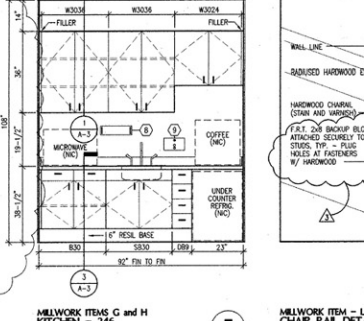
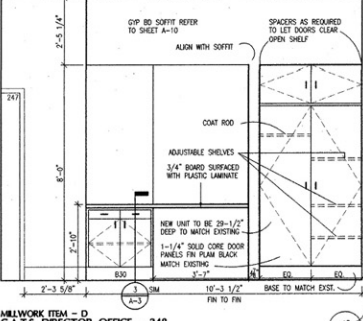
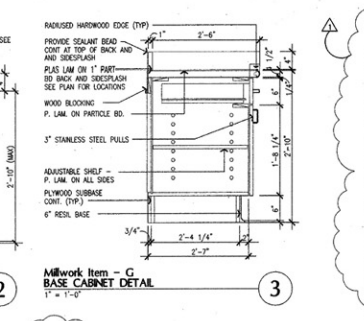
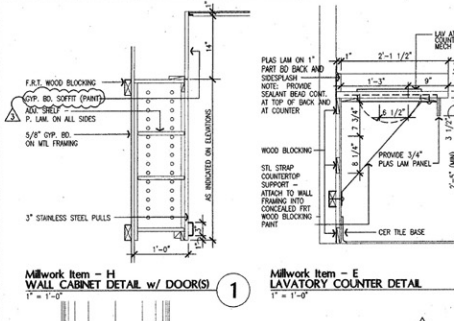
REMARKS:  
 ① Provide galvanized door and frame.  
 ② Install top 24" a.f.f.



TOILET ACCESSORIES SCHEDULE				
ITEM NO.	ACCESSORY	MFR. & MODEL	QUANTITY	NOTES
1	COMBINATION TOWEL DISPENSER RECEPTACLE	BOBRICK B-344	407 TO TOP	
2	SOAP DISPENSER (WALL MOUNTED)	BOBRICK B-8228	ON LAV COUNTER	
3	TOILET PAPER DISPENSER (DIAL ROLL)	BOBRICK B-2740	13" TO CENTERLINE	
4	SS CRIB BAR (TWO WALL)	BOBRICK B-88137-99 36x24	34" TO CENTERLINE	
5	COAT HOOK	BOBRICK B-2116	48" TO CENTERLINE	
6	MIRROR WITH SS FRAME AND SHELF	BOBRICK B-292 1836	40" TO BOTTOM	
7	WASTE RECEPTACLE (RECESSED)	BOBRICK B-3644	42" TO TOP	
8	FRAPER TOWEL DISPENSER (PULL)	BOBRICK B-253	50" TO CENTERLINE	
9	SOAP DISPENSER	BOBRICK B-306	42" TO TOP	
10	NOT USED	BOBRICK -	NOT USED	
11	NOT USED	BOBRICK -	NOT USED	
12	MIRROR WITH SS FRAME	BOBRICK B-290 7136	40" TO BOTTOM	
13	FRAMING MARKIN DISPOSAL (RECESSED)	BOBRICK B-3503	42" TO TOP	
14	ELECTRIC HANG UP (EMTC)	BOBRICK B-700 (A700)	50" TO BOTTOM	
15	UTILITY SHELF SS (3 CM)	BOBRICK B-224 x 30	60" TO CENTERLINE	

TOILET ACCESSORY NOTES:  
 1. Model no's denote toilet accessories products offered by Bobrick and represent the level of quality required.  
 2. Provide solid F.R.T. wood blocking as required for support of accessories.  
 3. All items shall be located horizontally and mounted to specific points above finish floor surfaces in accordance with applicable requirements of the Americans with Disabilities Act (ADA) - 1991.  
 A. Install grab bars with centerline 34" off rear face of disabled toilet stall, with centerline 34" a.f.f.  
 B. Install to allow 1-1/2" clearance between grab bar and wall.  
 C. Install grab bars 34" ht. to centerline behind.  
 3. Refer to Mechanical, Plumbing and Electrical drawing and specifications for all requirements pertaining to plumbing fixtures and controls.  
 4. All exposed piping of disabled lavatories shall be insulated and covered with a pre-molded rigid insulating jacket.  
 5. See Enlarged Kitchen - 246 Plan on this Sheet for accessories required of handinks.  
 6. Provide Item No. 15 of Jan. - 103.

- Adjustable shelving: In wall cabinets: Provide cleats to fit in predrilled equally spaced holes. In base cabinets: Provide metal support cleats in drilled metal standards. Provide intermediate support bracket at all shelves more than 48 inches long.
- Finish Hardware: Pulls - Prov. Stainless Steel Pulls on all cabinet doors. Knobs - Provide Stainless Steel Pulls on all cabinet and counter drawers. Catches - Provide DELETED Grommets - Provide.
- Rough Hardware: Support Brackets - Provide 2" wide x 3/16" thick steel studs. Provide galvanized material and fasteners at exterior locations and wet-areas. Anchor securely to walls and field point.



**C.A.T.S. Record Drawings**  
November 19, 1998

**A-3**

C.A.T.S.  
RECORD DRAWINGS  
NOVEMBER 19, 1998

SHERMAN CARTER BARNHART PSC  
PARTNERS IN ARCHITECTURE

2405 HARRISBURG ROAD - LEXINGTON, KY 40504 - PH: 606-224-1251 - FAX: 606-224-8446

JOB NO. 9645  
DATE: MARCH 18, 1997  
DRAWN: J.S., C.T.C.  
CHECKED: J.C., M.H.  
COPYRIGHT © 1997  
SHERMAN CARTER BARNHART, PSC

REVISIONS  
1 MILLWORK ITEM 1-15-98  
2 MILLWORK ITEM DELETED  
3 ADA 4-18-97

SHEET



**CENTER FOR ACADEMIC  
AND TUTORIAL SERVICES**  
The CATS Facility  
A Memorial Classroom  
University of Kentucky  
UK Project No. 2803

**ENLARGED STAIR PLANS  
AND SECTIONS**

Indicates "As-Built" information supplied by the Contractor for preparation of record drawings. This record drawing has been prepared, in part, based upon such information furnished by others. While this information is believed to be reliable, the DESIGN PROFESSIONAL cannot assure its accuracy, and thus is not responsible for the accuracy of this record drawing or for any errors or omissions which may have been incorporated into it as a result. Those relying on this record document are advised to obtain independent verification of its accuracy before applying it for any purpose.

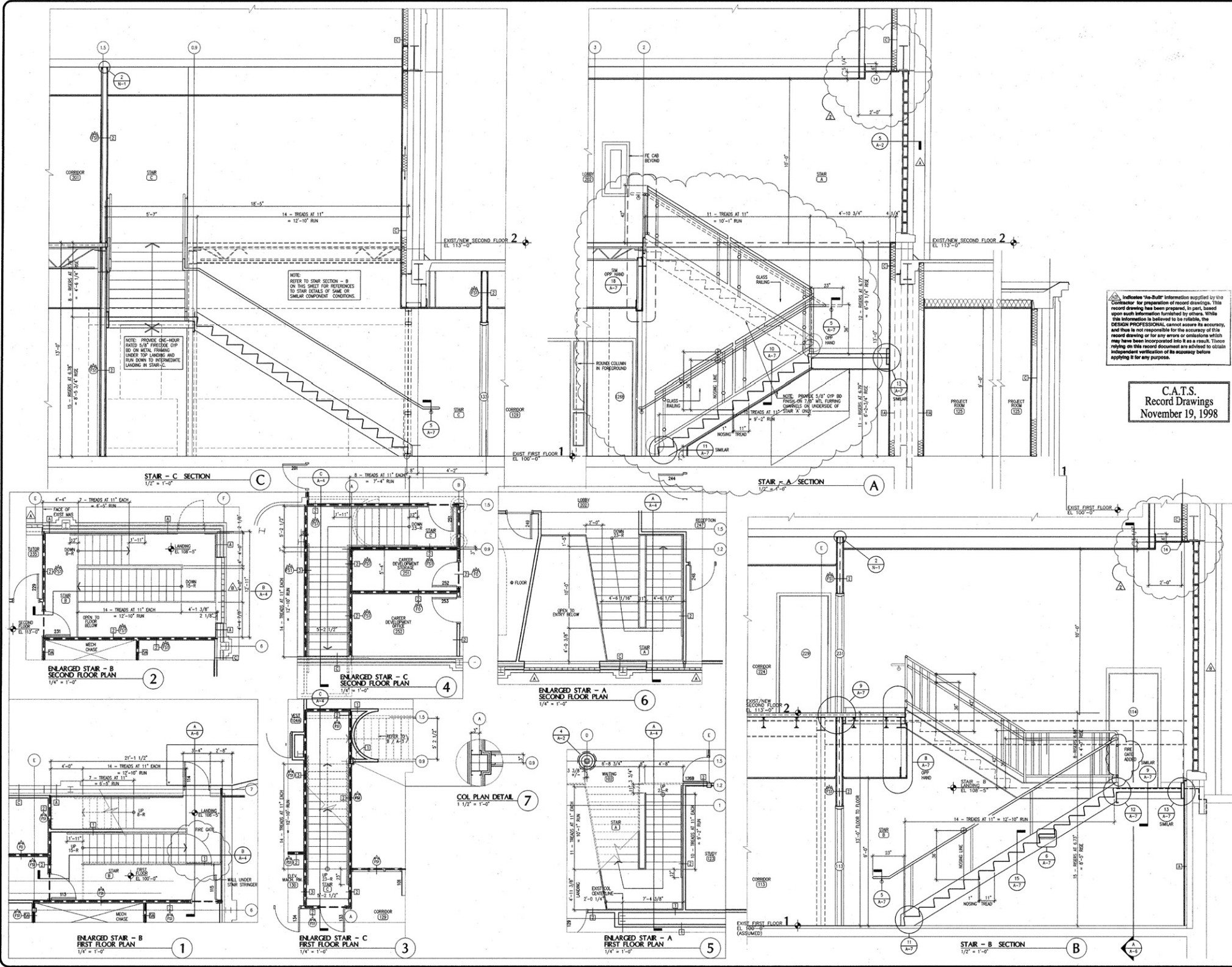
**C.A.T.S.  
Record Drawings  
November 19, 1998**

*Sherman Carter* **Partners in Architecture**  
PARTNERS IN ARCHITECTURE  
2405 HARRISONBURG ROAD • LEXINGTON, KY 40504 • PH: 606-224-1351 • FAX: 606-224-8446

JOB NO. 2842  
DATE: MARCH 18, 1997  
DRAWN: JAS  
CHECKED: JIC, MOH  
COPYRIGHT © 1997  
SHERMAN / CARTER /  
BARNHART, PSC

REVISIONS  
A 01.7 4-16-97  
B 01.8  
C 01.6 4-16-97

SHEET  
**A-4**







CENTER FOR ACADEMIC AND TUTORIAL SERVICES  
The CATS Facility  
At Memorial Coliseum  
University of Kentucky Lexington, Kentucky  
UK Project No. 15880

WALL SECTIONS

Sherman Carter Barnhart, P.C.  
PARTNERS IN ARCHITECTURE  
2405 HARBORSBURG ROAD • LEXINGTON, KY 40504 • PH: 606-224-1351 • FAX: 606-224-8486

JOB NO. 9642  
DATE MARCH 18, 1997  
DRAWN JAS  
CHECKED - JDC, MGH  
COPYRIGHT © 1997  
SHERMAN / CARTER / BARNHART, P.C.

REVISIONS
ADJ. 4-16-97

SHEET

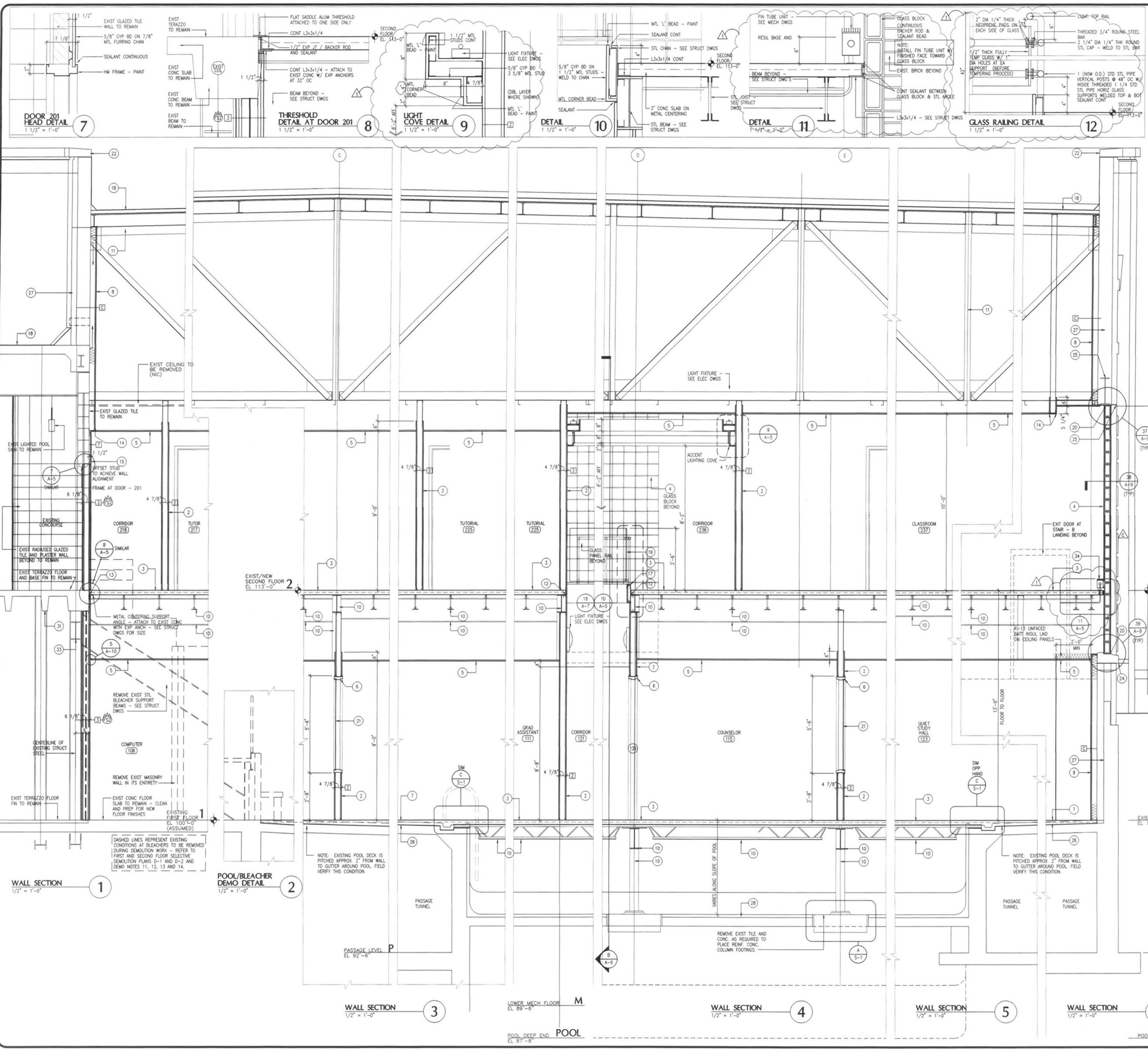
**A-5**

**KEYNOTES**

- 3 5/8" MTL STUDS AT 16" OC - INSTALL FULL HT TO DECK.
- 5/8" CYP BO ON 3 5/8" MTL STUDS AT 16" OC.
- 3" REINF CONC SLAB ON METAL CENTERING ON STL JOISTS - SEE STRUCTURAL DWGS.
- REMOVE EXISTING GLASS BLOCK - INSTALL NEW GLASS BLOCK UNITS. PREPARE EXIST OPENING AS REQUIRED, CLEAN EXIST STL ANGLES, INSTALL GLASS BLOCK, PRIME AND PAINT AND INSTALL SEALANT COMPLETELY AROUND PERIMETER.
- ACOUS TILE ON METAL SUSP SYSTEM - COORDINATE INSTALLATION HT WITH FLOOR PLANS A-1 AND A-2
- HM FRAME - PAINT.
- CONC FILL ON EXIST CONC - PLACE SUCH THAT THICKNESS IS NOT LESS THAN 2" AT ANY POINT.
- 5/8" CYP BO ON 3 5/8" MTL STUDS AT 16" OC. INSTALL R-13 BATT INSUL FULL HT OF WALL ON EXIST MASONRY WALL MATERIALS.
- 5/8" CYP BO ON 1 1/2" RIGID INSUL ON MTL Z-FURRING CHAN - INSTALL ON EXIST EXIST MASONRY FULL HT OF WALL.
- STRUCT STEEL JOIST, BEAM OR COLUMN - SEE STRUCTURAL DRAWINGS FOR TYPE, SIZE, LOCATION AND OTHER REQUIREMENTS.
- EXIST STEEL TRUSSES TO REMAIN.
- L 3 x 3 x 1/4 CONT - SEE STRUCT DWGS.
- PROVIDE 1/2" JT W/ BACKER ROD AND SEALANT.
- CORNER BEAD - TYP.
- 5/8" CYP BO ON 7/8" MTL FURRING CHAN.
- 1 1/4 STD STEEL PIPE RAILING - PAINT.
- EXPOSED STEEL CHANNEL - SEE STRUCT DWGS.
- EXIST ROOFING ON CONC SUBSTRATE TO REMAIN.
- 1/2" THICK SAFETY GLASS WITH POLISHED EDGES SUPPORTED ON 1 OD VERTICALS AND 1 1/4 STD STEEL PIPE RAIL HORZ - PAINTED FINISH. SECURE GLASS TO SUPPORTS WITH THREADED PIPE FITTINGS AND 1/4" THICK EPDM SPACER CUSHIONS THROUGH HOLES IN GLASS.
- CONTINUOUS SEALANT BEAD.
- 1/4 GLASS IN HM VIEW WINDOW FRAME - PAINT
- EXIST CUT STONE COPING TO REMAIN.
- HM FRAME IN EXIST WALL CONSTRUCTION.
- EXIST CUT STONE SILL TO REMAIN.
- EXIST STEEL LINTEL TO REMAIN - CLEAN, PREP AND PAINT. EXPOSED PORTIONS OF PLATE ONLY.
- REMOVE EXIST MUSET CER TILE TO CONC SUBSTRATE. CLEAN AND PREP FOR NEW FINISH.
- EXIST MASONRY WALL MATERIALS TO REMAIN.
- EXIST MUSET CER TILE AT POOL TO REMAIN UNLESS NOTED OTHERWISE.
- STEEL STAIR COMPONENTS - SEE SHIT A-7 FOR DESCRIPTION AND DETAILS.
- PREFINISHED METAL LOUVERS - REFER TO MECH DWGS FOR OTHER REQUIREMENTS.
- EXISTING CONC FLOOR STRUCTURE TO REMAIN.
- PREFN METAL FLASHING - INSTALL OVER PT 2x4 WD NAILER. MILL TOP OF NAILER TO 15 DEG TOP SLOPE.
- EXIST STL COL AND BEAM TO REMAIN.
- CONT FIN TUBE UNIT AT GLASS BLOCK - SEE MECH DWGS.

Indicates "As-Built" information supplied by the Contractor for preparation of record drawings. This record drawing has been prepared, in part, based upon such information furnished by others. While this information is believed to be reliable, the DESIGN PROFESSIONAL cannot assure its accuracy, and thus is not responsible for the accuracy of this record drawing or for any errors or omissions which may have been incorporated into it as a result. Those relying on this record document are advised to obtain independent verification of its accuracy before applying it for any purpose.

C.A.T.S.  
Record Drawings  
November 19, 1998



**DOOR 201 HEAD DETAIL**  
1 1/2" = 1'-0"

**THRESHOLD DETAIL AT DOOR 201**  
1 1/2" = 1'-0"

**LIGHT COVE DETAIL**  
1 1/2" = 1'-0"

**DETAIL**  
1 1/2" = 1'-0"

**DETAIL**  
1 1/2" = 1'-0"

**GLASS RAILING DETAIL**  
1 1/2" = 1'-0"

**WALL SECTION 1**  
1/2" = 1'-0"

**POOL/BLEACHER DEMO DETAIL**  
1/2" = 1'-0"

**WALL SECTION 3**  
1/2" = 1'-0"

**WALL SECTION 4**  
1/2" = 1'-0"

**WALL SECTION 5**  
1/2" = 1'-0"

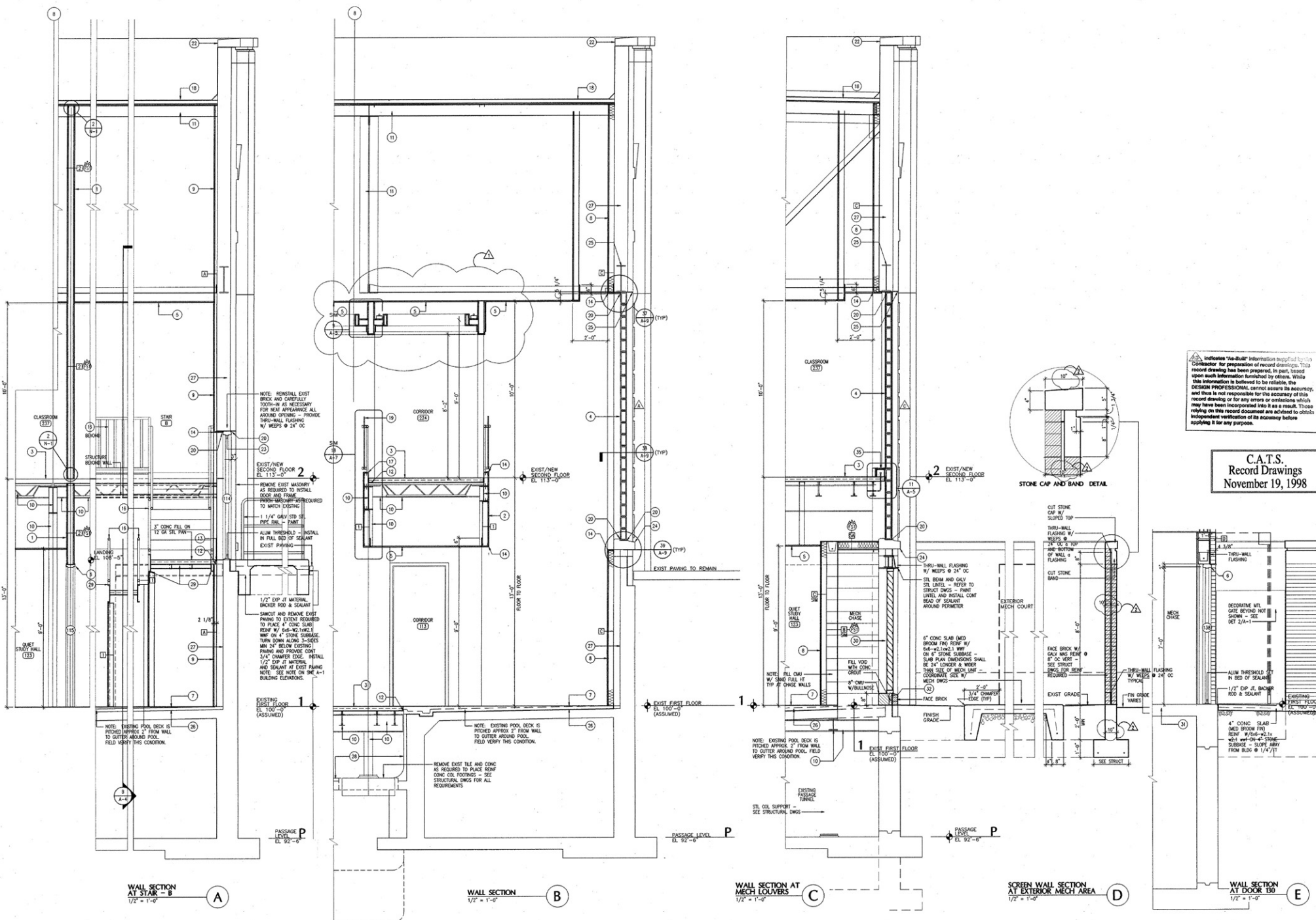
**WALL SECTION 6**  
1/2" = 1'-0"

LOWER MECH FLOOR M  
EL. 89'-6"

LOWER MECH FLOOR M  
EL. 92'-6"

POOL DEEP END POOL  
EL. 97'-8"

POOL DEEP END POOL  
EL. 92'-6"



Indicates "to-be" information required by the contractor for preparation of record drawings. This record drawing has been prepared, in part, based upon such information furnished by others. While this information is believed to be reliable, the DESIGN PROFESSIONAL cannot assume its accuracy, and thus is not responsible for the accuracy of this record drawing or for any errors or omissions which may have been incorporated into it as a result. Those relying on this record document are advised to obtain independent verification of its accuracy before applying it for any purpose.

**C.A.T.S.**  
Record Drawings  
November 19, 1998

WALL SECTION AT STAR - B  
1/2" = 1'-0" A

WALL SECTION  
1/2" = 1'-0" B

WALL SECTION AT MECH LOUVERS  
1/2" = 1'-0" C

SCREEN WALL SECTION AT EXTERIOR MECH AREA  
1/2" = 1'-0" D

WALL SECTION AT DOOR 130  
1/2" = 1'-0" E



**CENTER FOR ACADEMIC AND TUTORIAL SERVICES**  
The CATS Facility  
University of Louisville  
Columbian Hall, Lexington, Kentucky  
LE Reg. No. 9824

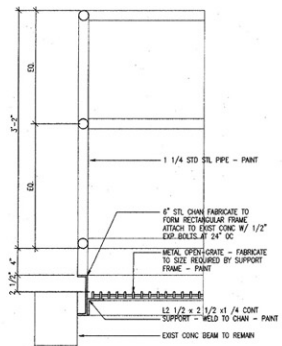
**WALL SECTIONS AND DETAILS**

*Sherman Carter Barnhart*  
PARTNERS IN ARCHITECTURE  
2400 HARRISBURG ROAD • LEXINGTON, KY 40504 • PH: 606-224-1351 • FX: 606-224-8486

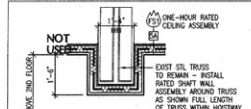
JOB NO. 9642  
DATE MARCH 18, 1997  
DRAWN JAC  
CHECKED - JDC, MCH  
COPYRIGHT © 1997  
SHERMAN / CARTER BARNHART, PSC

REVISIONS  
1. REVISED 4-15-97  
2. ADDENDUM NO. 17

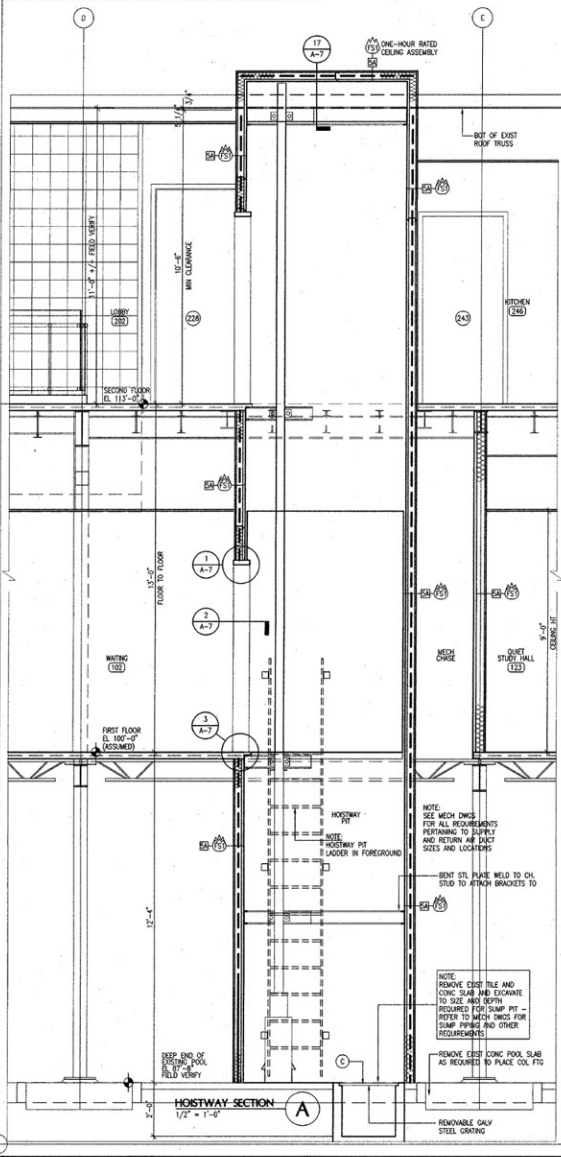
SHEET  
**A-6**



**GRATING DETAIL**  
1 1/2" x 1'-0"

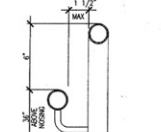


**DETAIL AT EXISTING TRUSS**  
1 1/2" x 1'-0"



**HOISTWAY SECTION**  
1 1/2" x 1'-0"

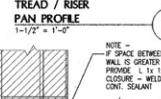
**Includes "As-Built" Information** supplied by the contractor for preparation of record drawings. This record drawing has been prepared, in part, based upon such information furnished by others. While this information is believed to be reliable, the DESIGN PROFESSIONAL cannot assume its accuracy, and thus is not responsible for the accuracy of this record drawing or for any errors or omissions which may have been incorporated into it as a result. Those relying on this record document are advised to obtain independent verification of its accuracy before relying on it for any purpose.



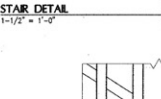
**HANDRAIL PROFILE**  
3" x 1'-0"



**HANDRAIL PROFILE**  
3" x 1'-0"



**TREAD / RISER PROFILE**  
1 1/2" x 1'-0"

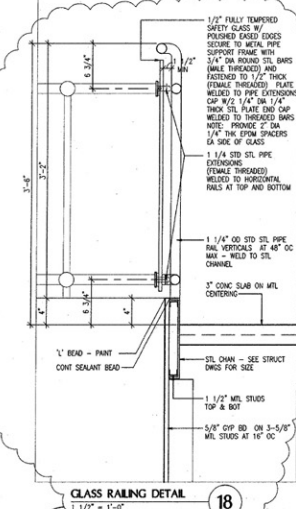


**STAIR DETAIL AT TOP LANDING**  
1 1/2" x 1'-0"

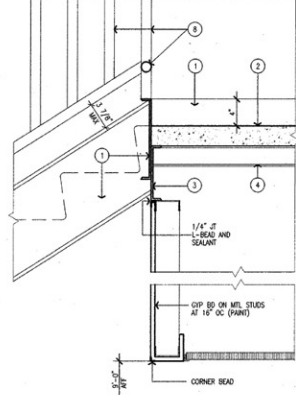


**STAIR CONNECTION DETAIL AT FLOOR**  
1 1/2" x 1'-0"

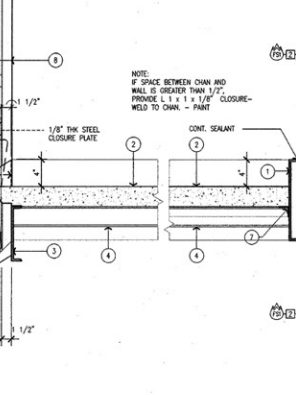
**STAIR DETAIL AT INTERMEDIATE LANDING**  
1 1/2" x 1'-0"



**GLASS RAILING DETAIL**  
1 1/2" x 1'-0"



**STAIR DETAIL AT TOP LANDING**  
1 1/2" x 1'-0"



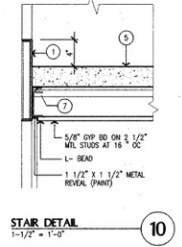
**STAIR DETAIL AT INTERMEDIATE LANDING**  
1 1/2" x 1'-0"

**ELEVATOR and HOISTWAY NOTES**

- Pit Ladder:**
- (A) Provide 24 inch wide wall mounted steel pit ladder. Ladder shall project min. 7 inches (to centerline of rungs) off wall and side rails shall extend 48 inches above adjacent floor level. Paint ladder.
  - (B) Provide steel angle, bolt attached bent plate to concrete slab, at each floor and elevator door location. Coordinate Finish Floor Elevation (F.F.E.) as required to accept elevator mfrs. threshold unit and scheduled floor finishes.
- Stair Angle:**
- (C) 8 x 11.5. Extend into masonry min. 4" at each end and weld to 1/2" x 4" x 8" steel plate. Install plate to CMU with 2-1/2" x 8" long anchor, with 2" hook, and grout masonry solid.
  - (D) All landings greater than 4'-0" in depth provide 5.3 x 5.7.5 for additional support.
- Surge Pit:**
- (E) Provide 2'-0" x 2'-0" x 2'-0" deep surge pit with galv. metal grate on galv. steel frame. Refer to Mech. and Elec. drawings for other requirements.
- Jack Hole:**
- (F) Not Required.
- Finishes:**
- (G) Floor finish is not provided by elevator contractor and must be provided by contractor providing scheduled floor finish in elevator cab.
- General Elevator and Hoistway Notes:**
1. All projections and/or setbacks which occur horizontal along the walls enclosing the hoistway shall be protected with a beveled surface at an angle of not less than 75 degrees with the horizontal plane (ANSI A17.1 - 1981).
  2. Install sprinkler head and smoke detector in Hoistway Pit and at top of hoistway. Refer to Mechanical and Electrical drawings.

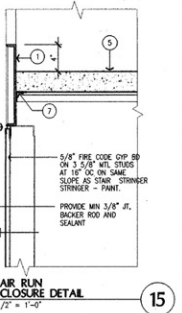
**STEEL STAIR NOTES**

- GENERAL:**
- Steel Stair, landing and railing assemblies shall be designed and fabricated as required to meet or exceed all specified code requirement design loadings.
- COMPONENTS:**
- Stringers:**
- (1) MC 12 x 10.6. Close open ends with 1/8" steel plate.
  - (2) 3" conc. fill on 12 ga. steel pan.
  - (3) C 8 x 11.5. Extend into masonry min. 4" at each end and weld to 1/2" x 4" x 8" steel plate. Install plate to CMU with 2-1/2" x 8" long anchor, with 2" hook, and grout masonry solid.
  - (4) All landings greater than 4'-0" in depth provide 5.3 x 5.7.5 for additional support.
- Landing Support:**
- (5) 2-1/2" conc. fill on 12 ga. steel pan.
  - (6) 12 ga. steel. Provide profile shown on drawings.
- Tread/Riser Pan Supports:**
- (7) L 1-1/2 x 1-1/2 x 1/8", weld to stringers as required to receive pans.
  - (8) 1-1/4 standard steel pipe.
- Stair and Landing Railings:**
- (9) Fabricate such that handrail is 36 inches above nosings and guardrail is 42 inches above landing. Extend stair railing 12 inches at top and 1-tread at bottom.
- Railing Clearance:**
- Shall not exceed 4 inches of clear space between any two railings and any horizontal railing and a stringer.
- Wall Handrail:**
- (10) 1-1/4 standard steel pipe with specified wall brackets. Return to wall at ends.
- Install 36 inches above nosings. Extend 12 inches at top and 1-tread at bottom.
- Finishes:**
- (11) Grind all welded connections smooth prior to primer coat of paint.
  - (12) Field paint all exposed steel components with specified coating over shop applied primer.
  - (13) Provide landing, tread and nosing finishes where indicated on Room Finish Schedule.



**STAIR DETAIL**  
1 1/2" x 1'-0"

**C.A.T.S. Record Drawings**  
November 19, 1998



**STAIR RUN ENCLOSURE DETAIL**  
1 1/2" x 1'-0"



**CENTER FOR ACADEMIC AND TUTORIAL SERVICES**  
The C.A.T.S. Facility  
At Memorial Coliseum  
University of Kentucky  
Lexington, Kentucky  
UK Campus, No. 2680

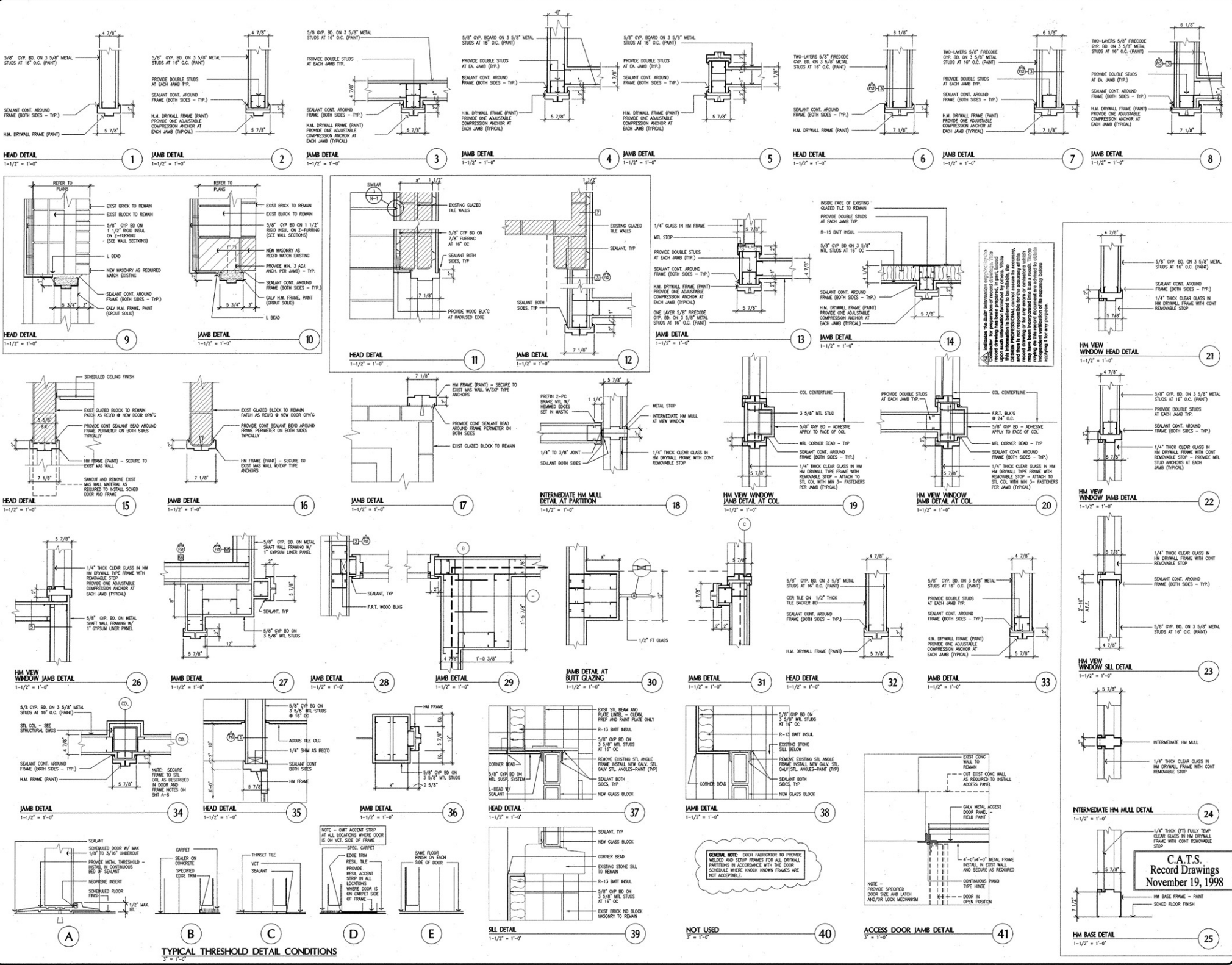
**HOISTWAY SECTION**  
**STAR AND MISCELLANEOUS DETAILS**

**Sherman Carter Barnhart**  
PARTNERS IN ARCHITECTURE  
2405 WINDROSBURG ROAD - LEXINGTON, KY 40504 - PH. 606-254-1331 - FAX. 606-254-8446

JOB NO.	9642
DATE	MARCH 18, 1997
DRAWN	JAS
CHECKED	JOC, NCH
COPYRIGHT	©1997 SHERMAN / CARTER BARNHART, PSC
REVISIONS	
1	ADD 4 6-16-97

**A-7**





**C.A.T.S.**  
 Record Drawings  
 November 19, 1998

Scale: 1/4" = 1'-0"  
 Date: 11/19/98  
 Job: 9642



**CENTER FOR ACADEMIC AND TUTORIAL SERVICES**  
The CATS Facility  
At Memorial Coliseum  
University of Kentucky, Lexington, Kentucky  
UK Project No. 0280

**REFLECTED CEILING PLANS AND DETAILS**

*Sherman Carter-Barnhart*  
**PARTNERS IN ARCHITECTURE**  
2405 HARRISBURG ROAD - LEXINGTON, KY 40504 - PH: 606-224-1381 - FAX: 606-224-8446

JOB NO. 9642  
DATE MARCH 18, 1997  
DRAWN C.M. TYS, JAS  
CHECKED - JOK, MCH  
COPYRIGHT © 1997  
SHERMAN / CARTER  
BARNHART, PSC

**REVISIONS**  
▲ AS NO. 1 6-30-97  
▲ AS NO. 2 7-30-97  
▲ AS NO. 4 5-3-97  
▲ AS NO. 7 10-29-97  
▲ 05.2 11-15-97  
▲ 05.3 4-15-97

**SHEET**  
**A-10**

### CEILING NOTES

GENERAL:  
CEILING RELATED MECHANICAL AND ELECTRICAL ITEMS ARE SHOWN ON REFLECTED CEILING PLAN FOR THE PURPOSE OF INDICATING ONLY THEIR RESPECTIVE LOCATIONS. SEE MECHANICAL AND/OR ELECTRICAL DRAWINGS FOR TYPE, SIZE AND OTHER REQUIREMENTS PERTAINING SPECIFICALLY TO THESE ITEMS.

- REFER TO ROOM FINISH SCHEDULE FOR CEILING TYPES AND INSTALLATION HEIGHTS.
- LIGHT FIXTURES, WHERE CONCEALED BY OTHER CEILING RELATED ITEMS, ARE NOT SHOWN FOR PURPOSES OF CLARITY. SEE ELECTRICAL DRAWINGS.
- REFER TO WALL TYPES FOR DESCRIPTION OF WALLS EXTENDING (OR NOT) TO UNDERSIDE OF CEILING AND/OR STRUCTURE ABOVE.
- INSTALL SPRINKLER HEADS IN THE CENTER OF 2 X 2 CEILING PANELS AND ON QUARTER POINTS ALONG THE 2 FT DIMENSION OF 2 X 4 CEILING PANELS.
- INSTALL ALL SPRINKLER HEADS ON SWING ARM IMPLIES. SEE MECHANICAL DRAWINGS FOR MORE SPECIFIC REQUIREMENTS.

### CEILING LEGEND

GENERAL NOTE: SEE ROOM FINISH SCHEDULE AND ROOM PLANS ON THIS SET AND ALSO FOR CEILING TYPES AND INSTALLATION HEIGHTS.

- ROOM NUMBER
- 2x2 ACOUSTICAL PANEL
- CEILING SUSPENSION SYSTEM GRID
- CIP. BD. SOFFIT - PAINT FINISH NEW WORK
- EXISTING WALL
- EXISTING COLUMN LINE IDENTIFICATION
- COLUMN LINE IDENTIFICATION
- PARTIAL SECTION OR DETAILS
- WALL OR BUILDING SECTION
- EXISTED WALL / PARTITION DESIGNATION
- FD = UNRATED SPECIFIC USE SEP
- FS1 = 1 HR RATED FARE SEP WALL
- FS2 = 2 HR RATED FARE SEP WALL

### FIRE PROTECTION

SEE FIRE PROTECTION DRAWINGS

- SPRINKLER HEAD

### ELECTRICAL

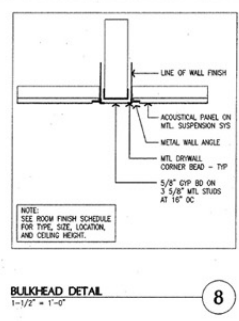
SEE ELECTRICAL DRAWINGS

- SPEAKER
- MOTION DETECTOR
- HEAT DETECTOR
- SMOKE DETECTOR
- FIRE ALARM SIGNAL DEVICE
- EXIT LIGHT
- ACCENT LIGHTING
- 2x2 LIGHT FEATURE
- 2x4 LIGHT FEATURE
- 1x4 LIGHT FEATURE (DOWN HUNG)
- 1/2x4 LIGHT FEATURE

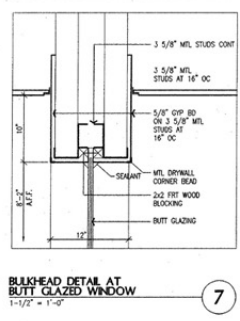
### MECHANICAL

SEE MECHANICAL DRAWINGS

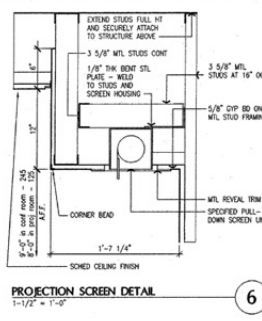
- HANG STRIP SUPPLY
- HANG SUPPLY AIR DIFFUSER
- HANG RETURN AIR
- EXHAUST GRILLE
- UNIT VENTILATOR OR FAN COOL UNIT



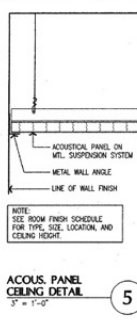
**8**  
**BULK-HEAD DETAIL**  
1-1/2" x 1-0"



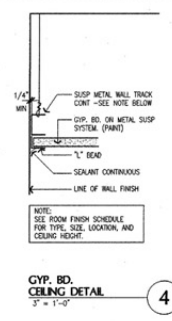
**7**  
**BULK-HEAD DETAIL AT BUTT-GLAZED WINDOW**  
1-1/2" x 1-0"



**6**  
**PROJECTION SCREEN DETAIL**  
1-1/2" x 1-0"



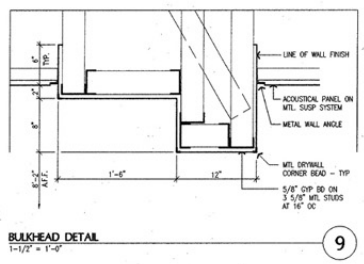
**5**  
**ACOUS. PANEL CEILING DETAIL**  
3/4" x 1-0"



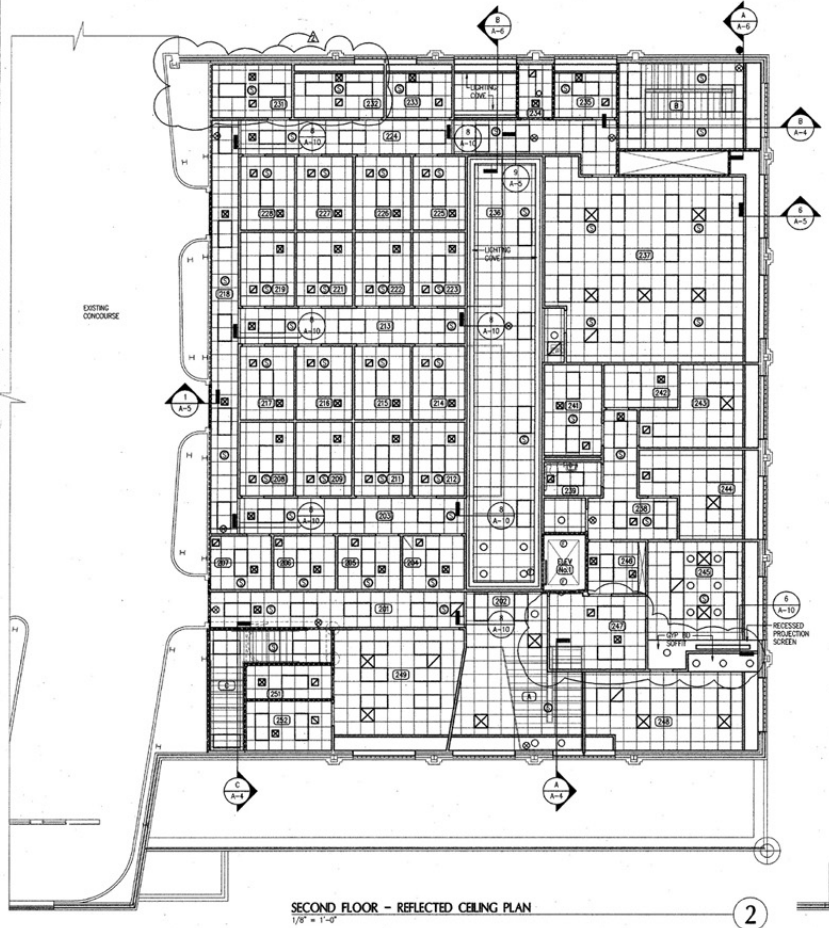
**4**  
**CIP. BD. CEILING DETAIL**  
3/4" x 1-0"



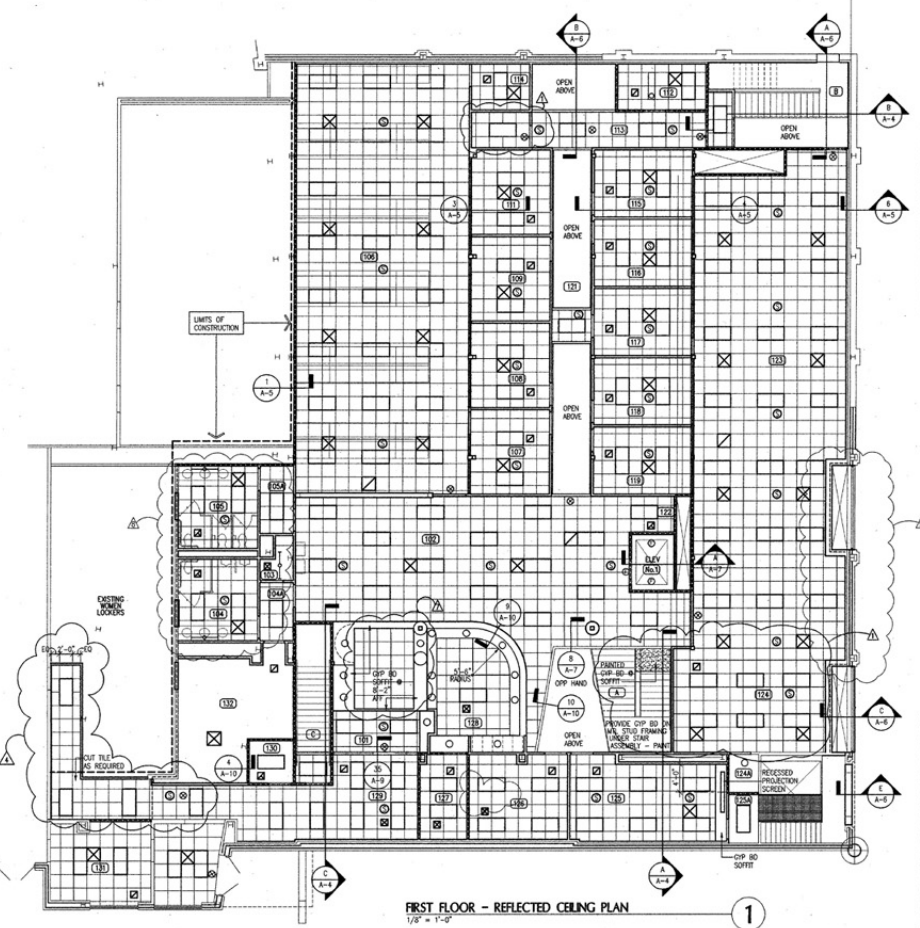
**3**  
**BULK-HEAD DETAIL**  
1-1/2" x 1-0"



**9**  
**BULK-HEAD DETAIL**  
1-1/2" x 1-0"



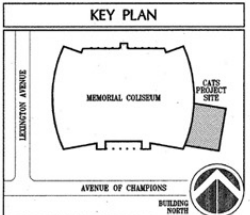
**2**  
**SECOND FLOOR - REFLECTED CEILING PLAN**  
1/8" = 1'-0"



**1**  
**FIRST FLOOR - REFLECTED CEILING PLAN**  
1/8" = 1'-0"

▲ indicates "As-Built" information supplied by the Contractor for preparation of record drawings. This record drawing has been prepared, in part, based upon such information furnished by others. While this information is believed to be reliable, the DESIGN PROFESSIONAL cannot assure its accuracy, and thus is not responsible for the accuracy of this record drawing or for any errors or omissions which may have been incorporated into it as a result. Those relying on this record document are advised to obtain independent verification of its accuracy before applying it for any purpose.

**C.A.T.S. Record Drawings**  
November 19, 1998



**KEY PLAN**

1. N. HARRISBURG ROAD, LEXINGTON, KY 40504