

CODED NOTES: NEW WORK

- CONNECT TO EXISTING 4" SANITARY WASTE LINE IN THE EXISTING NUTTER TRAINING FACILITY. SEE PLUMBING FLOOR PLANS.
- NEW 1000 GALLON GREASE TRAP PER FLUCC REQUIREMENTS.
- NEW SANITARY LATERAL TO BUILDING. SEE PLUMBING PLANS.
- EXISTING MANHOLE PER DR1.
- EXISTING FDC (PER DR1) FOR NEW FOOTBALL TRAINING FACILITY.
- CONNECT TO EXISTING WATER LINE AT THIS LOCATION.
- THRUST BLOCK. SEE DETAIL ON DRAWING U2.3.
- EXISTING VALVE IN VALVE BOX (TYPICAL).
- FREE STANDING POST INDICATOR VALVE WITH TAMPER SWITCH. SEE SPECIFICATIONS AND DETAIL ON DRAWING U2.2.
- IRRIGATION GANNON VALVE BOX ASSEMBLY. SEE DETAIL ON DRAWING U2.1.
- DRAIN DOWN MANHOLE. SEE DETAIL ON DRAWING U2.3.
- GATE OPERATOR AND CARD READER. PROVIDE POWER CONNECTION IN ACCORDANCE WITH THE MANUFACTURER'S RECOMMENDATIONS TO POWER SOURCE INDICATED IN A 1/2" SCHEDULE 40 PVC CONDUIT. INSTALL 1" SCHEDULE 40 PVC CONDUIT TO THE FIRST FLOOR DR ROOM (127) TO FACILITATE INSTALLATION OF LOW VOLTAGE CABLING.
- YARD HYDRANT - SUBM MODEL X1801-M8. ENCASED NON-FREEZE GROUND HYDRANT. CHROME PLATED BRONZE BOX AND HINGED COVER. HYDRANT IS EQUIPPED WITH A TAPPED 1/2" DRAIN PORT IN THE VALVE HOUSING. 3/4" ADAPTER VACUUM BREAKER AND 3/4" HOSE CONNECTION. SEE DETAIL ON SHEET P300.
- SEE DETAILS SHEET FOR INFORMATION ON TERMINATION OF POWER AND LOW VOLTAGE CONDUITS AT THE TOWER, PAD, AND POLES.
- NEW 2" DIRECT BURIED CONDUIT FOR MANHOLE POWER FEEDERS.
- NEW ELECTRIC DUCTBANK ENCASED IN CONCRETE PER THE DETAILS.
- NEW TELECOMMUNICATIONS DUCTBANK ENCASED IN CONCRETE PER THE DETAILS.
- DOMESTIC WATER METER IN METER PIT AS REQUIRED BY KY-AMERICAN WATER COMPANY.
- AGRICULTURAL 4" METER WITH DDC INTERFACE THAT REPORTS BACK TO DATA ROOM.
- NEW MEDIUM PRESSURE GAS MAIN BY COLUMBIA GAS OF KENTUCKY.
- NEW 56 GAS MAIN BY DIVISION 22 CONTRACTOR.
- NEW GAS PRESSURE REGULATORS BY DIVISION 22 CONTRACTOR. SEE GAS SERVICE REGULATOR PIPING DETAIL ON SHEET U2.1.
- NEW 56 GAS MAIN BY DIVISION 22 CONTRACTOR. SEE GAS SERVICE REGULATOR PIPING DETAIL ON SHEET U2.1.
- NEW EMERGENCY GENERATOR PROVIDED BY OWNER AND INSTALLED BY THIS CONTRACTOR.
- UNDERGROUND PULL BOX FOR FIELD POWER. BOX SHALL BE A 36"x48"x12" DEEP MINIMUM. OPEN BOTTOM. TIER 22 POLYMER CONCRETE STYLE WITH COVER. HUBBELL MODEL P2032M OR EQUAL. COVER SHALL BE FLUSH WITH THE BOTTOM OF THE ARTIFICIAL TURF SURFACE. A SECTION OF THE TURF MATERIAL WILL BE CUTOUT AND INSTALLED TO COVER THE BOX LID. COORDINATE WITH THE TURF INSTALLER FOR FINAL ELEVATIONS.
- 4" CONDUIT INTO CAMERA RECORDING ROOM.
- 1/2" CONDUIT FOR POWER.
- POWER FEED TO THE FIELD STORAGE BUILDING. SEE RISER FOR SIZING AND SOURCE.
- NEW TELECOMMUNICATIONS MANHOLE.
- PORTABLE EVERSHAM BRADLEY 518-821 WITH BRADLEY HEATER JACKET 518-821H AND ON-SITE ASSEMBLY TO BE FURNISHED BY OWNER.
- UNDERGROUND PULL BOX FOR FIELD LOW VOLTAGE SYSTEMS. BOX SHALL BE A 36"x48"x12" DEEP MINIMUM. OPEN BOTTOM. TIER 22 POLYMER CONCRETE STYLE WITH COVER. HUBBELL MODEL P2032M OR EQUAL. COVER SHALL BE FLUSH WITH THE BOTTOM OF THE ARTIFICIAL TURF SURFACE. A SECTION OF THE TURF MATERIAL WILL BE CUTOUT AND INSTALLED TO COVER THE BOX LID. COORDINATE WITH THE TURF INSTALLER FOR FINAL ELEVATIONS.
- NEW LIGHTING FIXTURE PROVIDED BY THE OWNER AND INSTALLED BY THIS CONTRACTOR.
- EXISTING SITE LIGHTING CIRCUIT CONDUIT TERMINATED AT THIS APPROXIMATE LOCATION. EXTEND THIS EXISTING CIRCUIT TO THE FIXTURES AS INDICATED. THERE ARE TWO CIRCUITS - ONE FOR THE LIGHTING AND ONE FOR RECEPTACLE POWER ON THE POLE. THE TWO CIRCuits MATCH EXISTING CONDUIT AND CONDUIT SIZES.
- TURN UP CONDUITS AND STUB UP 4" AFF THROUGH

HNTB rosstarrant architects
 HNTB Corporation
 101 Old Lafayette Avenue
 Lexington, Kentucky 40502
 p 859.254.4018
 f 859.254.4018

STATE OF KENTUCKY
 DAMEL H. BRUNSON
 PE
 715 Kirk Drive
 Lexington, Kentucky 40502
 p 816.472.2011
 f 816.472.4563

Stagg and Fisher
 Consulting Engineers, Inc.
 3224 Young Drive
 Lexington, Kentucky 40503
 p 859.543.0733
 f 859.543.0733

DR3 - SITE UTILITIES PLAN - NEW WORK
 FOOTBALL TRAINING CENTER AND PRACTICE FIELDS
 FOR THE
 UNIVERSITY OF KENTUCKY
 LEXINGTON, KENTUCKY

Architect of Record:
 Rosstarrant Architects, Inc.
 101 Old Lafayette Avenue
 Lexington, Kentucky 40502
 p 859.254.4018
 f 859.254.4018

Structural Engineer:
 HNTB Corporation
 101 Old Lafayette Avenue
 Lexington, Kentucky 40502
 p 859.254.4018
 f 859.254.4018

Local Structural Engineer:
 Brown & Kubson, P.C.
 2224 Young Drive
 Lexington, Kentucky 40503
 p 859.543.0733
 f 859.543.0733

M/E/P Engineer:
 Stagg & Fisher Consulting Engineers, Inc.
 3224 Young Drive
 Lexington, Kentucky 40503
 p 859.271.3246
 f 859.271.3613



UK# 2397.0

Project No: 1406
 Drawn By: KSLB
 Rev'd By: DRB

ISSUED FOR: CONSTRUCTION

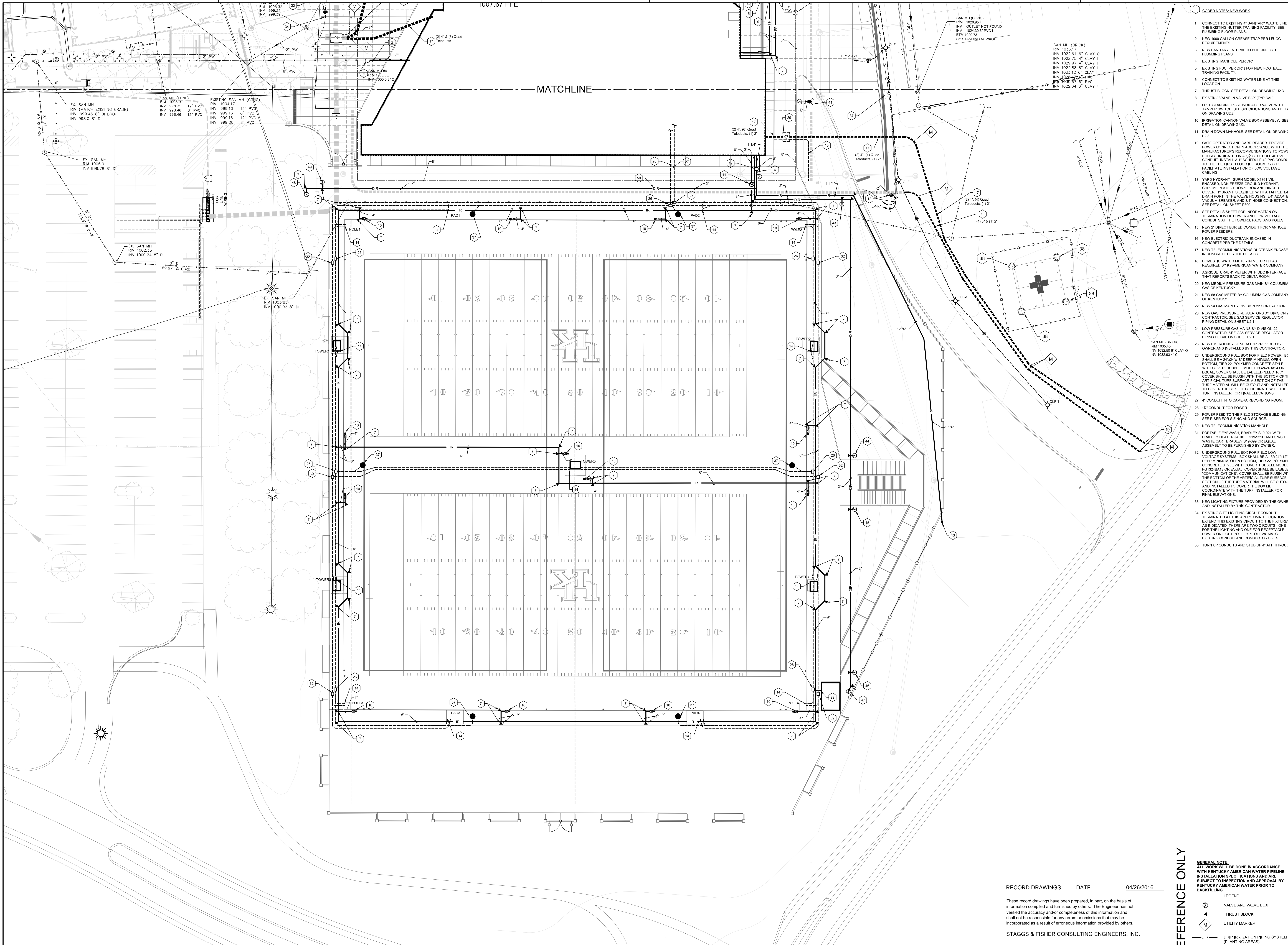
REVISIONS	
#	DATE DESCRIPTION
1	7-20-2015 P00-01

DATE ISSUED:
 03/04/2015

NOTE:
 IT IS NOT INTENDED THAT THE PLANS SHOW ALL OFFSETS IN PIPES, CONDUITS, AND DUCTS REQUIRED FOR INSTALLATION OF THE WORK. DETAILS AND SECTIONS ARE INCLUDED FOR SOME AREAS TO SHOW INTENDED RELATIONSHIP OF THE WORK OF VARIOUS TRADES. IT SHALL BE THE RESPONSIBILITY OF THE CONTRACTOR AND SUB-CONTRACTORS TO COORDINATE INSTALLATION OF THE WORK AND TO PROVIDE THE NECESSARY OFFSETS, TRANSFORMATIONS, AND FITTINGS REQUIRED. NO ADDITIONAL COMPENSATION WILL BE ALLOWED FOR CORRECTION CONFLICTS BETWEEN THE WORK OF VARIOUS TRADES. DETAILS AND SECTIONS ARE SHOWN FOR THE CONTRACTORS CONVENIENCE AND SHALL NOT BE CONSIDERED COMPLETE IN EVERY DETAIL.

DR3 - SITE UTILITES PLAN
 SCALE: 1" = 30'

DATE ISSUED:
 03/04/2015



NOTE:
 IT IS NOT INTENDED THAT THE PLANS SHOW ALL OFFSETS IN PIPES, CONDUITS, AND DUCTS REQUIRED FOR INSTALLATION OF THE WORK. DETAILS AND SECTIONS ARE INCLUDED FOR SOME AREAS TO SHOW INTENDED RELATIONSHIP OF THE WORK OF VARIOUS TRADES. IT SHALL BE THE RESPONSIBILITY OF THE CONTRACTOR AND SUB-CONTRACTORS TO COORDINATE INSTALLATION OF THE WORK AND TO PROVIDE THE NECESSARY OFFSETS, TRANSFORMATIONS, AND FITTINGS REQUIRED. NO ADDITIONAL COMPENSATION WILL BE ALLOWED FOR CORRECTION CONFLICTS BETWEEN THE WORK OF VARIOUS TRADES. DETAILS AND SECTIONS ARE SHOWN FOR THE CONTRACTORS CONVENIENCE AND SHALL NOT BE CONSIDERED COMPLETE IN EVERY DETAIL.

DR3 - SITE UTILITES PLAN
 SCALE : 1" = 30'

REFERENCE ONLY

- RECORD DRAWINGS** DATE 04/26/2016
- GENERAL NOTE:**
 ALL WORK WILL BE DONE IN ACCORDANCE WITH KENTUCKY AMERICAN WATER PIPELINE INSTALLATION SPECIFICATIONS AND ARE SUBJECT TO INSPECTION AND APPROVAL BY KENTUCKY AMERICAN WATER PRIOR TO BACKFILLING.
- LEGEND**
- ⊗ VALVE AND VALVE BOX
 - ▲ THRUST BLOCK
 - Ⓜ UTILITY MARKER
 - DIR — DRIP IRRIGATION PIPING SYSTEM (PLANTING AREAS)
 - IR — IRRIGATION PIPING SYSTEM (FIELDS)

STAGGS & FISHER CONSULTING ENGINEERS, INC.

1. CONNECT TO EXISTING 4" SANITARY WASTE LINE IN THE EXISTING TUTTER TRAINING FACILITY. SEE PLUMBING FLOOR PLANS.
2. NEW 100 GALLON GREASE TRAP PER PLUG REQUIREMENTS.
3. NEW SANITARY LATERAL TO BUILDING. SEE PLUMBING PLANS.
4. EXISTING MANHOLE PER DRI.
5. EXISTING FDC (PER DRI) FOR NEW FOOTBALL TRAINING FACILITY.
6. CONNECT TO EXISTING WATER LINE AT THIS LOCATION.
7. THRUST BLOCK. SEE DETAIL ON DRAWING U2.3.
8. EXISTING VALVE IN VALVE BOX (TYPICAL).
9. FREE STANDING POST INDICATOR VALVE WITH TAMPER SWITCH. SEE SPECIFICATIONS AND DETAIL ON DRAWING U2.2.
10. IRRIGATION CANNON VALVE BOX ASSEMBLY. SEE DETAIL ON DRAWING U2.1.
11. DRAIN DOWN MANHOLE. SEE DETAIL ON DRAWING U2.3.
12. GATE OPERATOR AND CARD READER. PROVIDE POWER CONNECTION IN ACCORDANCE WITH THE MANUFACTURER'S RECOMMENDATIONS TO POWER SOURCE INDICATED IN A 1/2" SCHEDULE 40 PVC CONDUIT. INSTALL A 1" SCHEDULE 40 PVC CONDUIT TO THE THE FIRST FLOOR OF ROOM (127) TO FACILITATE INSTALLATION OF LOW VOLTAGE CABLING.
13. YARD HYDRANT - BURN MODEL K1361-V8. COVERED, NON-FREEZE GROUND HYDRANT. CHROME PLATED BRONZE BOX AND HINGED COVER. HYDRANT IS EQUIPPED WITH A TAPPED 1/4" DRAIN PORT IN THE VALVE HOUSING. 3/4" ADAPTER VACUUM BREAKER AND 3/4" HOSE CONNECTION. SEE DETAIL ON SHEET P300.
14. SEE DETAILS SHEET FOR INFORMATION ON TERMINATION OF POWER AND LOW VOLTAGE CONDUITS AT THE TOWERS, PADS, AND POLES.
15. NEW 2" DIRECT BURIED CONDUIT FOR MANHOLE POWER FEEDERS.
16. NEW ELECTRIC DUCTBANK ENCASED IN CONCRETE PER THE DETAILS.
17. NEW TELECOMMUNICATIONS DUCTBANK ENCASED IN CONCRETE PER THE DETAILS.
18. DOMESTIC WATER METER IN METER PIT AS REQUIRED BY KY-AMERICAN WATER COMPANY.
19. AGRICULTURAL 4" METER WITH ODC INTERFACE THAT REPORTS BACK TO DELTA ROOM.
20. NEW MEDIUM PRESSURE GAS MAIN BY COLUMBIA GAS OF KENTUCKY.
21. NEW SR GAS METER BY COLUMBIA GAS COMPANY OF KENTUCKY.
22. NEW SR GAS MAIN BY DIVISION 22 CONTRACTOR.
23. NEW GAS PRESSURE REGULATORS BY DIVISION 22 CONTRACTOR. SEE GAS SERVICE REGULATOR PIPING DETAIL ON SHEET U2.1.
24. LOW PRESSURE GAS MAINS BY DIVISION 22 CONTRACTOR. SEE GAS SERVICE REGULATOR PIPING DETAIL ON SHEET U2.1.
25. NEW EMERGENCY GENERATOR PROVIDED BY OWNER AND INSTALLED BY THIS CONTRACTOR.
26. UNDERGROUND PULL BOX FOR FIELD POWER. BOX SHALL BE A 24"x24"x18" DEEP MINIMUM. OPEN BOTTOM. TIER 22. POLYMER CONCRETE STYLE WITH COVER. HUBBELL MODEL PG2428A24 OR EQUAL. COVER SHALL BE LABELED "ELECTRIC". COVER SHALL BE FLUSH WITH THE BOTTOM OF THE ARTIFICIAL TURF SURFACE. A SECTION OF THE TURF MATERIAL WILL BE CUTOUT AND INSTALLED TO COVER THE BOX LID. COORDINATE WITH THE TURF INSTALLER FOR FINAL ELEVATIONS.
27. 4" CONDUIT INTO CAMERA RECORDING ROOM.
28. 1/2" CONDUIT FOR POWER.
29. POWER FEED TO THE FIELD STORAGE BUILDING. SEE RISER FOR SIZING AND SOURCE.
30. NEW TELECOMMUNICATION MANHOLE.
31. PORTABLE EYEWEASH, BRADLEY S19421 WITH BRADLEY HEATER JACKET S19401H AND ON-SITE WASTE CART BRADLEY S19399 OR EQUAL ASSEMBLY TO BE FURNISHED BY OWNER.
32. UNDERGROUND PULL BOX FOR FIELD LOW VOLTAGE SYSTEMS. BOX SHALL BE A 18"x24"x12" DEEP MINIMUM. OPEN BOTTOM. TIER 22. POLYMER CONCRETE STYLE WITH COVER. HUBBELL MODEL PG1824B18 OR EQUAL. COVER SHALL BE LABELED "COMMUNICATIONS". COVER SHALL BE FLUSH WITH THE BOTTOM OF THE ARTIFICIAL TURF SURFACE. A SECTION OF THE TURF MATERIAL WILL BE CUTOUT AND INSTALLED TO COVER THE BOX LID. COORDINATE WITH THE TURF INSTALLER FOR FINAL ELEVATIONS.
33. NEW LIGHTING FIXTURE PROVIDED BY THE OWNER AND INSTALLED BY THIS CONTRACTOR.
34. EXISTING SITE LIGHTING CIRCUIT CONDUIT TERMINATED AT THIS APPROXIMATE LOCATION. EXTEND THIS EXISTING CIRCUIT TO THE FIXTURES AS INDICATED. THERE ARE TWO CIRCUITS - ONE FOR THE LIGHTING AND ONE FOR RECEPTACLE POWER LIGHT POLE TYPE OLF. MATCH EXISTING CONDUIT AND CONDUCTOR SIZES.
35. TURN UP CONDUITS AND STUB UP 4" AFF THROUGH

HNTB rosstarrant architects
 HNTB Corporation
 101 Old Lafayette Avenue, Lexington, Kentucky 40502
 Phone: 606.254.4018 Fax: 606.254.4016

STATE OF KENTUCKY
 DANIEL H. BRONSON
 REGISTERED PROFESSIONAL ENGINEER

Staggs and Fisher
 Consulting Engineers, Inc.
 3224 Young Drive
 Lexington, Kentucky 40503
 Phone: 606.543.0733 Fax: 606.543.0733

DR3 - SITE UTILITES PLAN - NEW WORK
 FOR THE:
UNIVERSITY OF KENTUCKY
 LEXINGTON, KENTUCKY

Architect of Record:
 Rosstarrant Architects, Inc.
 101 Old Lafayette Avenue
 Lexington, Kentucky 40502
 p 606.254.4018
 f 606.254.4016

Structural Engineer:
 HNTB Corporation
 715 Kirk Drive
 Kansas City, Missouri 64105
 p 816.472.1201
 f 816.472.4553

Local Structural Engineer:
 Brown & Rubicon, P.C.
 2224 Young Drive
 Lexington, Kentucky 40503
 p 606.543.0733
 f 606.543.0733

M/E/P Engineer:
 Staggs & Fisher Consulting Engineer
 3224 Lochness Drive
 Lexington, Kentucky 40517
 p 606.271.3246
 f 606.271.3613

UK

UK# 2397.0

Project No: 1406
 Drawn By: KSJ
 Rev'd By: DRB

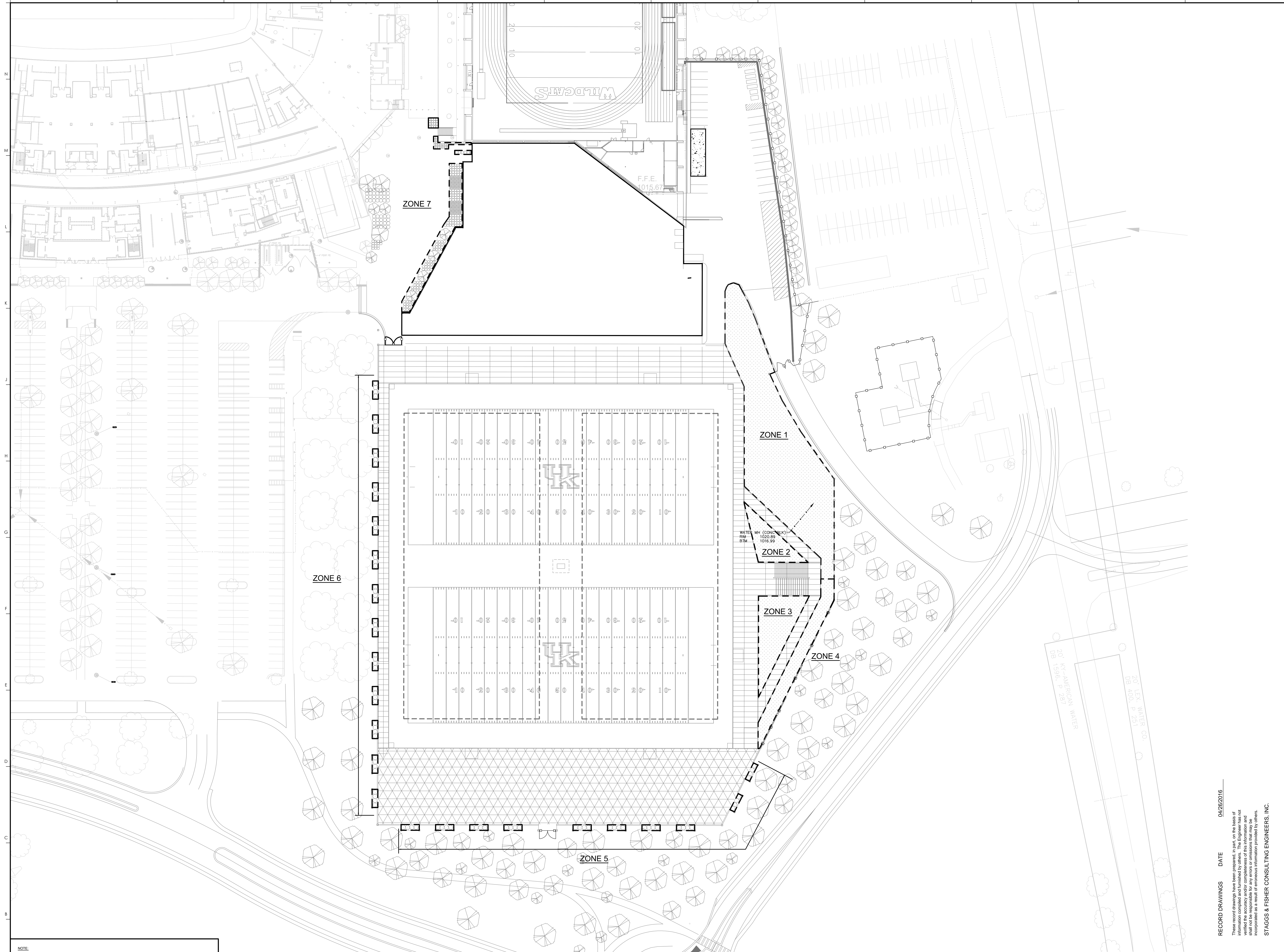
ISSUED FOR: CONSTRUCTION

#	DATE	DESCRIPTION
1	05-26-2015	TOWER BD
2	09-28-2016	POC-05

Copyright © Rosstarrant Architects 2016
 DESIGN RELEASE 3

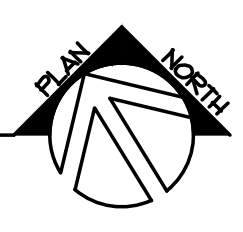
U1.2

DATE ISSUED:
 03/04/2015



NOTE:
 IT IS NOT INTENDED THAT THE PLANS SHOW ALL OFFSETS IN PIPES, CONDUITS, AND DUCTS REQUIRED FOR INSTALLATION OF THE WORK. DETAILS AND SECTIONS ARE INCLUDED FOR SOME AREAS TO SHOW INTENDED RELATIONSHIP OF THE WORK OF VARIOUS TRADES. IT SHALL BE THE RESPONSIBILITY OF THE CONTRACTOR AND SUB-CONTRACTORS TO COORDINATE INSTALLATION OF THE WORK AND TO PROVIDE THE NECESSARY OFFSETS, TRANSFORMATIONS, AND FITTINGS REQUIRED. NO ADDITIONAL COMPENSATION WILL BE ALLOWED FOR CORRECTION CONFLICTS BETWEEN THE WORK OF VARIOUS TRADES. DETAILS AND SECTIONS ARE SHOWN FOR THE CONTRACTORS CONVENIENCE AND SHALL NOT BE CONSIDERED COMPLETE IN EVERY DETAIL.

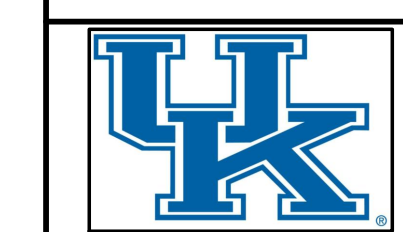
DR3 - DRIP IRRIGATION ZONE PLAN
 SCALE : 1" = 40'



RECORD DRAWINGS DATE 04/26/2016

These record drawings have been prepared, in part, on the basis of information furnished by others. The Engineer does not warrant the accuracy and/or completeness of this information and shall not be responsible for any errors or omissions that may be incorporated as a result of erroneous information provided by others.

STAGGS & FISHER CONSULTING ENGINEERS, INC.



UK# 2397.0

Project No: 1406
 Drawn By: KSM
 Rev'd By: DRB

ISSUED FOR: CONSTRUCTION

#	DATE	DESCRIPTION

Copyright © Rosstarrant Architects 2016
 DESIGN RELEASE 3

U1.3
 DRIP IRRIGATION ZONE PLAN

DATE ISSUED:
 03/04/2015

DR3 - DRIP IRRIGATION ZONE PLAN
 FOR THE:
 UNIVERSITY OF KENTUCKY
 LEXINGTON, KENTUCKY

Architect of Record:
 Rosstarrant Architects, Inc.
 101 Old Lafayette Avenue
 Lexington, Kentucky 40502
 p 859.254.4018
 f 859.251.9244

Structural Engineer:
 National Structural Engineer:
 HNTB Corporation
 715 Kirk Drive
 Kansas City, Missouri 64105
 p 816.472.1201
 f 816.472.4563

Local Structural Engineer:
 Brown & Hudson, P.C.
 2224 Young Drive
 Lexington, Kentucky 40505
 p 859.543.0733
 f 859.543.0733

MFP Engineer:
 Stagg & Fisher Consulting Engineer
 3284 Lochness Drive
 Lexington, Kentucky 40517
 p 859.271.3246
 f 859.271.3613



UK# 2397.0

Project No: 1406
 Drawn By: KSM
 Rev'd By: DRB

ISSUED FOR: CONSTRUCTION

#	DATE	DESCRIPTION

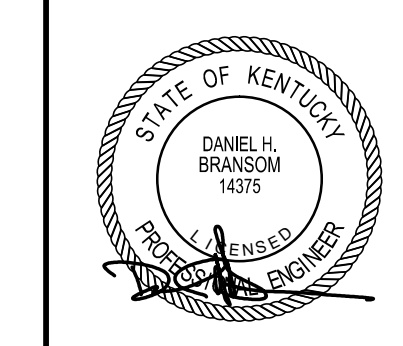
Copyright © Rosstarrant Architects 2016
 DESIGN RELEASE 3

U1.3
 DRIP IRRIGATION ZONE PLAN

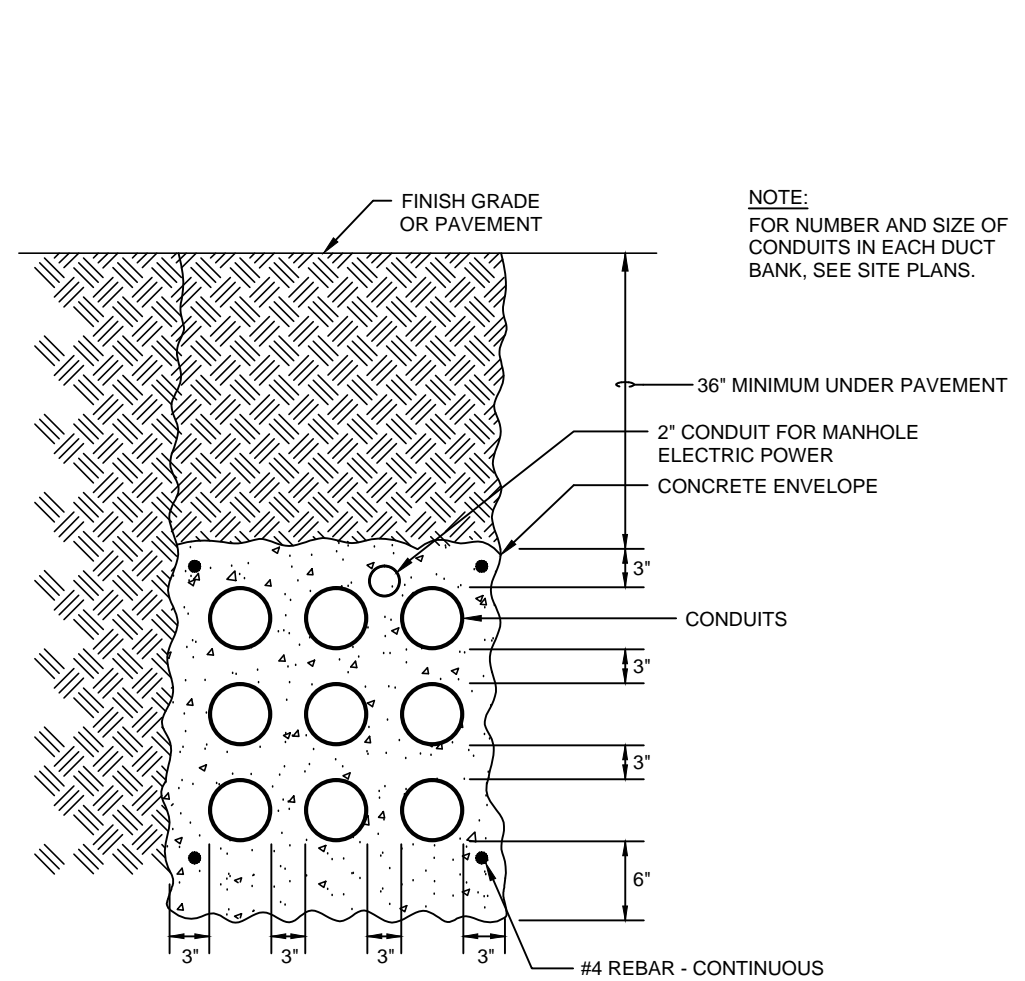
DATE ISSUED:
 03/04/2015

HNTB
 HNTB Corporation
 715 Kirk Drive
 Kansas City, Missouri 64105
 816.472.1201 Fax 816.472.4563

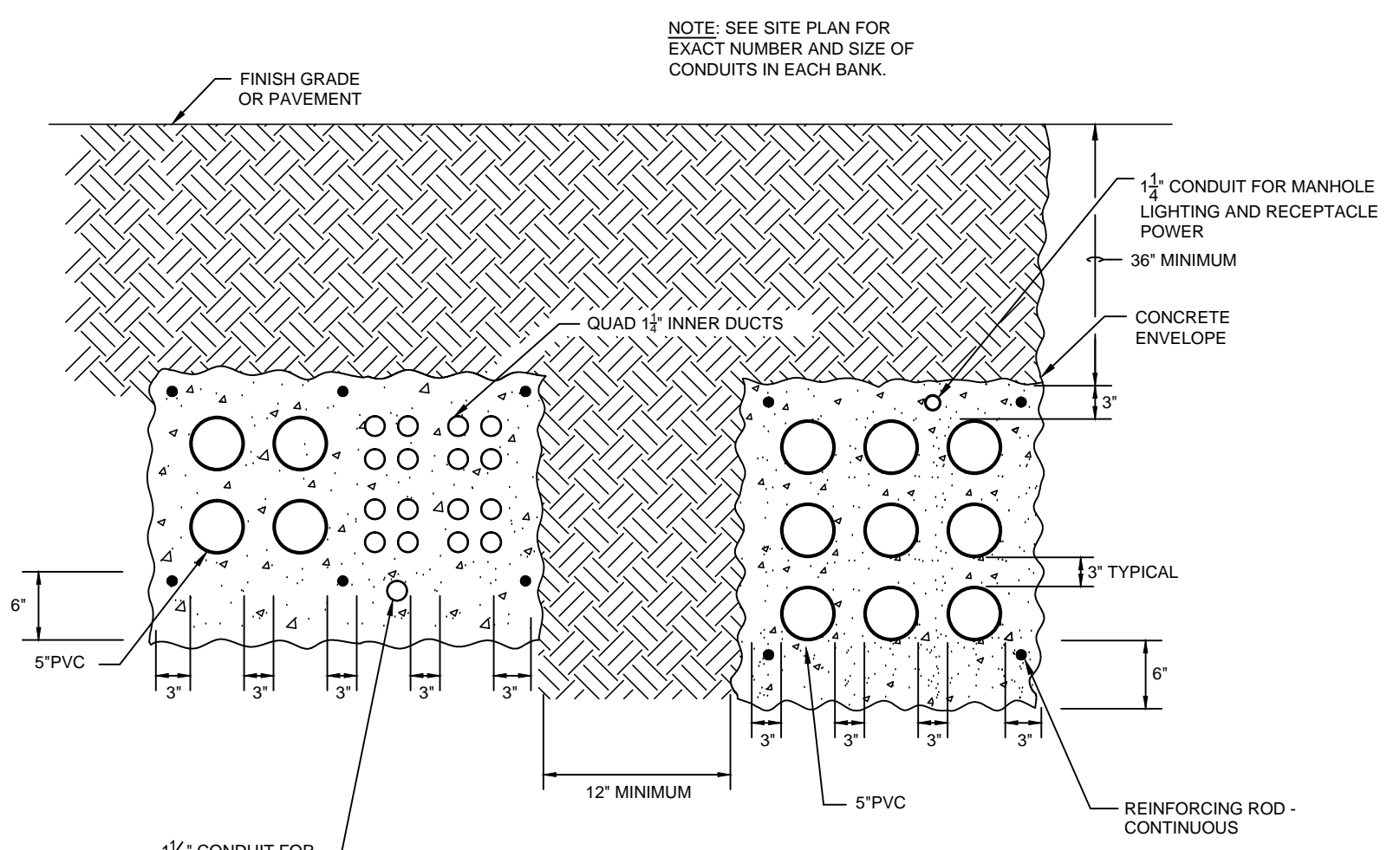
rosstarrant architects
 101 Old Lafayette Avenue Lexington, Kentucky
 40502 p 859.254.4018 f 859.251.9244



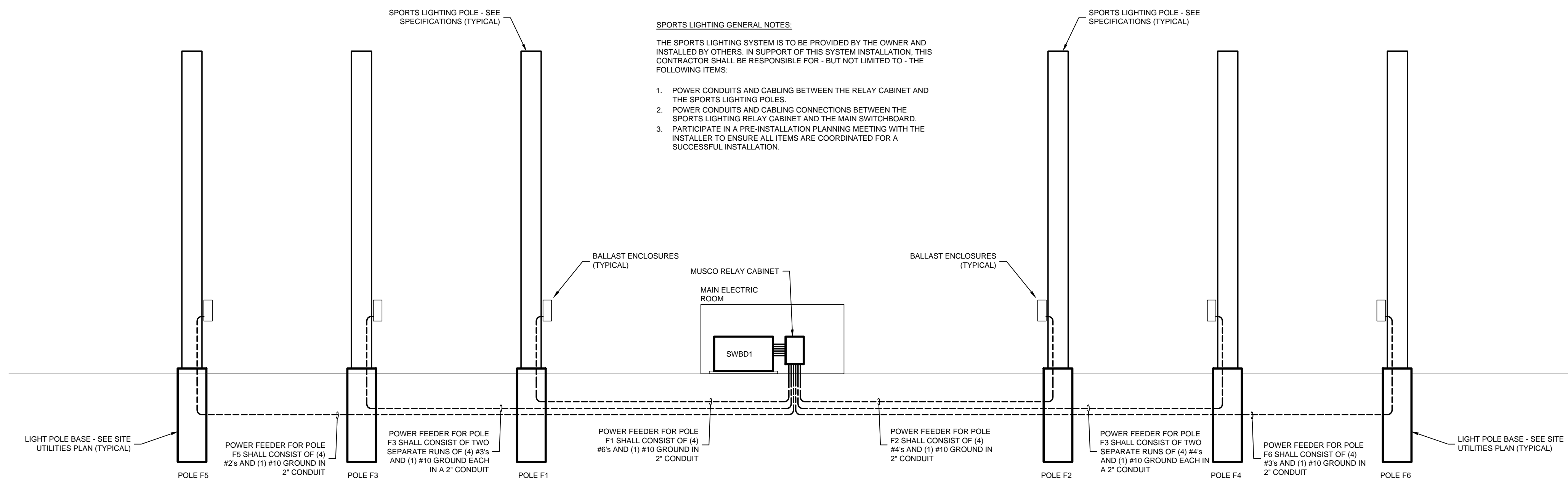
SF
 Stagg and Fisher
 Consulting Engineers, Inc.
 3284 Lochness Drive
 Lexington, KY 40517



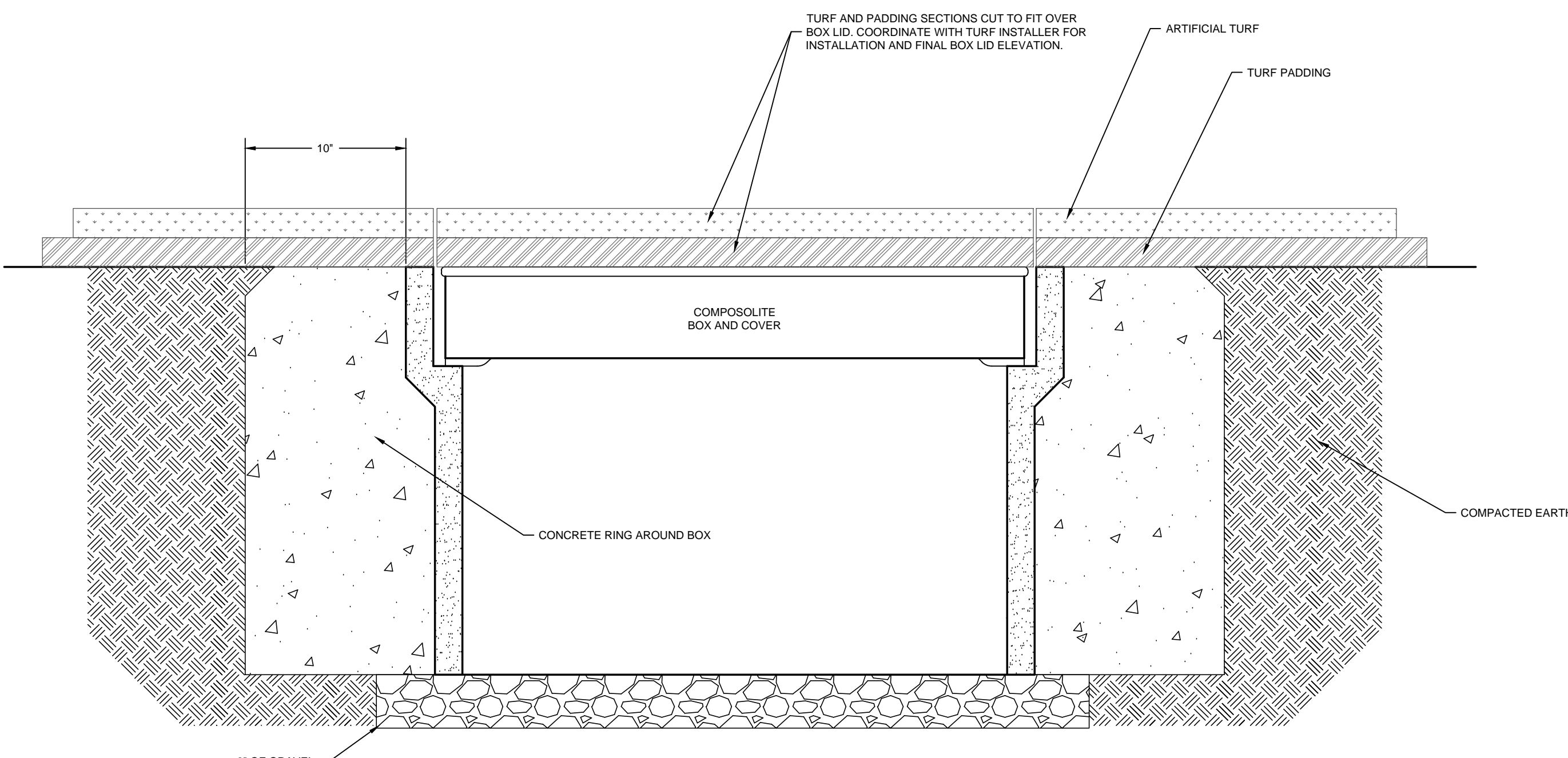
TYPICAL PRIMARY ELECTRICAL DUCTBANK INSTALLATION DETAIL
NO SCALE



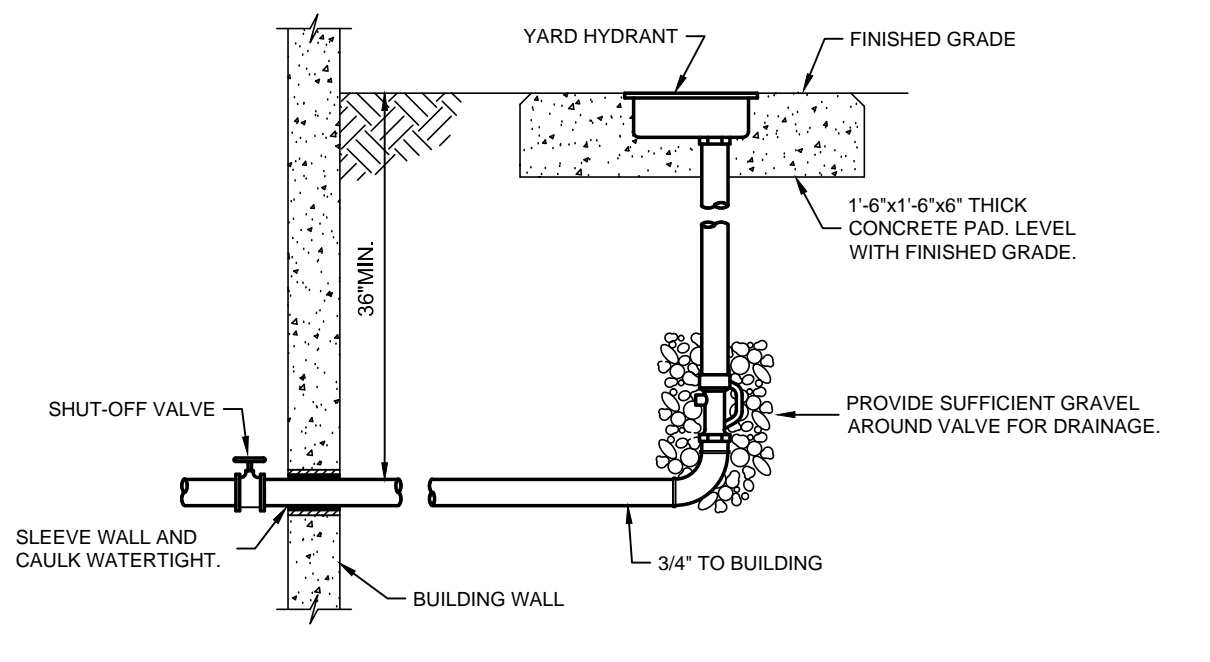
TYPICAL COMMUNICATION/MEDIUM VOLTAGE PARALLELED DUCTBANK INSTALLATION DETAIL
NO SCALE



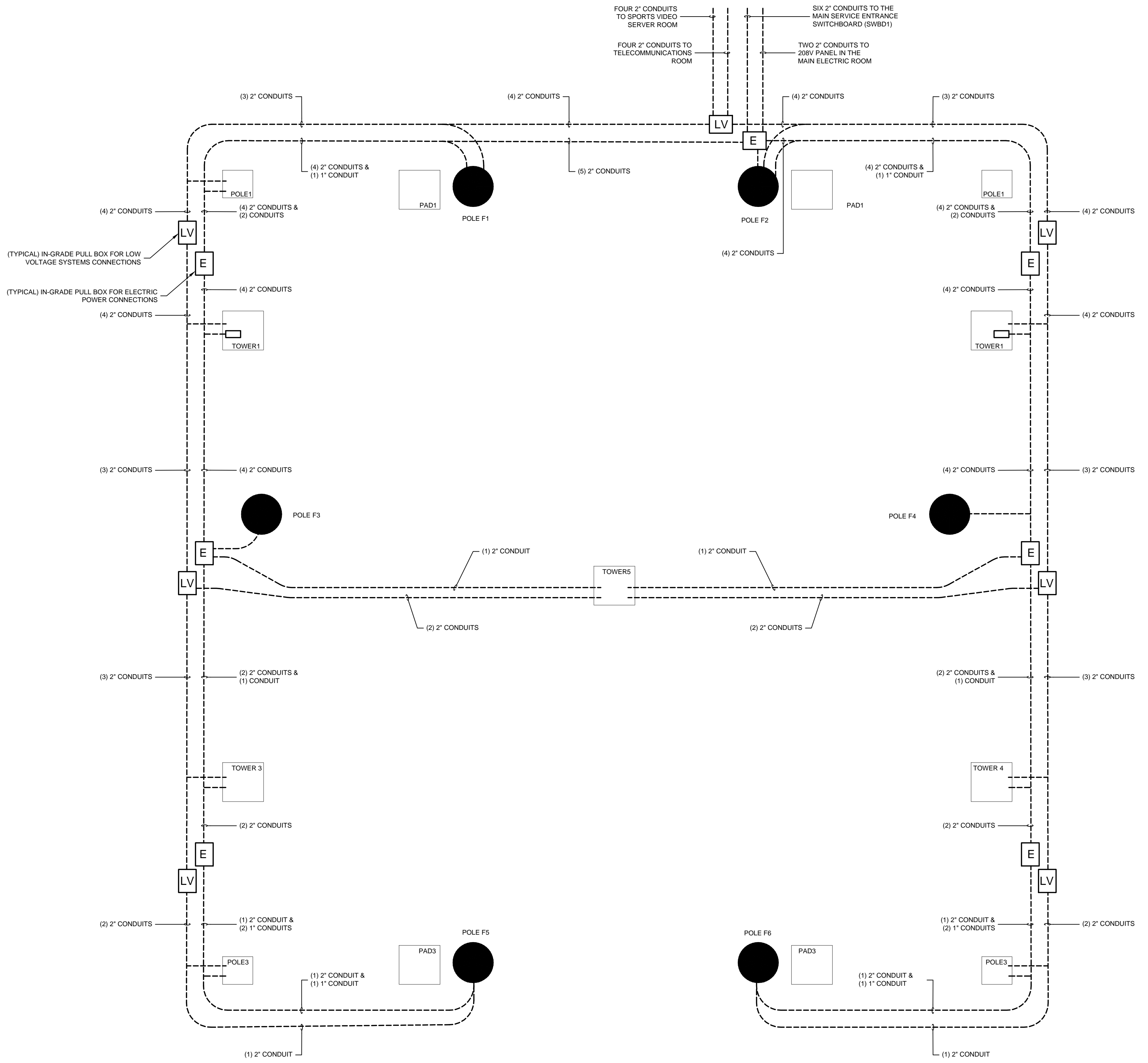
SPORTS LIGHTING POLE CONNECTIONS SCHEMATIC
NO SCALE



QUARTZITE BOX INSTALLATION DETAIL
NO SCALE



YARD HYDRANT DETAIL
NO SCALE



FIELD SYSTEMS RACEWAY SCHEMATIC
NO SCALE

RECORD DRAWINGS DATE 04/28/2016

These record drawings have been prepared, in part, on the basis of information compiled and furnished by others. The Engineer has not verified the accuracy and/or completeness of this information and shall not be responsible for any errors or omissions that may be incorporated as a result of erroneous information provided by others.

STAGGS & FISHER CONSULTING ENGINEERS, INC.

#	DATE	DESCRIPTION
1	05-28-2015	TOWER BID

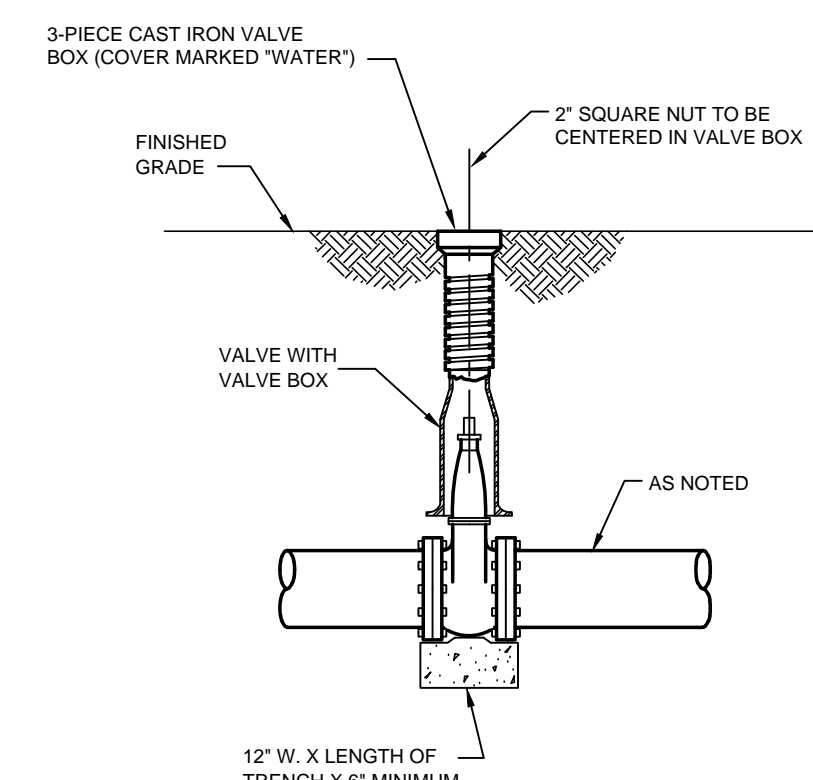
REFERENCE ONLY

NOTE:

ALL VALVES SHALL BE PROVIDED WITH VALVE BOXES. VALVE BOXES SHALL BE STANDARD ADJUSTABLE CAST IRON OR PVC EXTENSION TYPE. THREE PIECE, 8-1/4" SHAFT, SCREW TYPE AND OF SUCH LENGTH AS NECESSARY TO EXTEND FROM VALVE TO FINISHED GRADE.

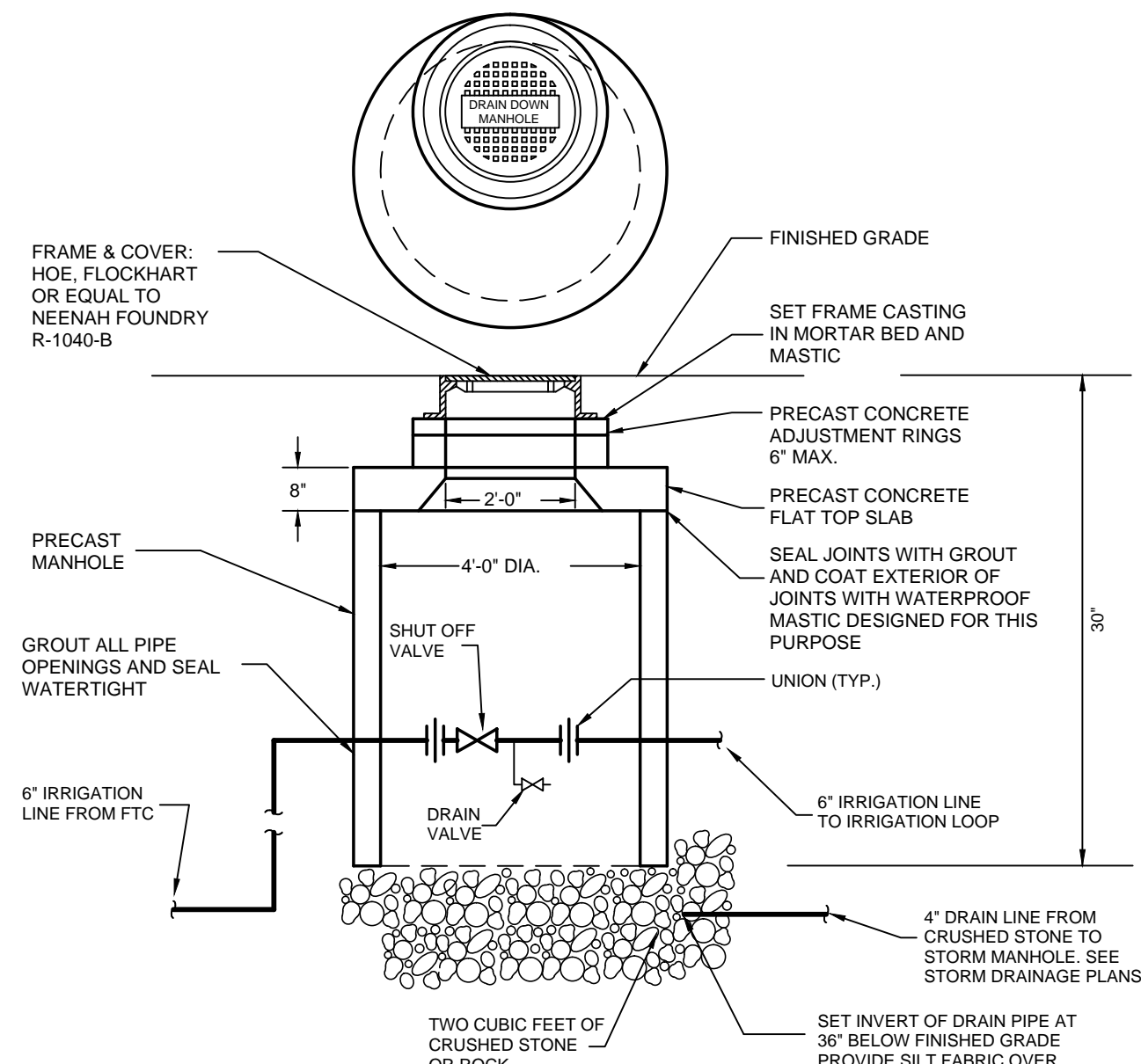
VALVE BOX BASES SHALL CONFORM TO THE FOLLOWING:

VALVE SIZE	BASE
4" AND SMALLER	ROUND, 8" IN HEIGHT, 10-7/8" DIA. AT BOTTOM
6" AND 8"	ROUND, 11" IN HEIGHT, 14-3/8" DIA. AT BOTTOM
10" AND LARGER	ROUND, 11" IN HEIGHT, 15"x11-1/8" DIA. AT BOTTOM



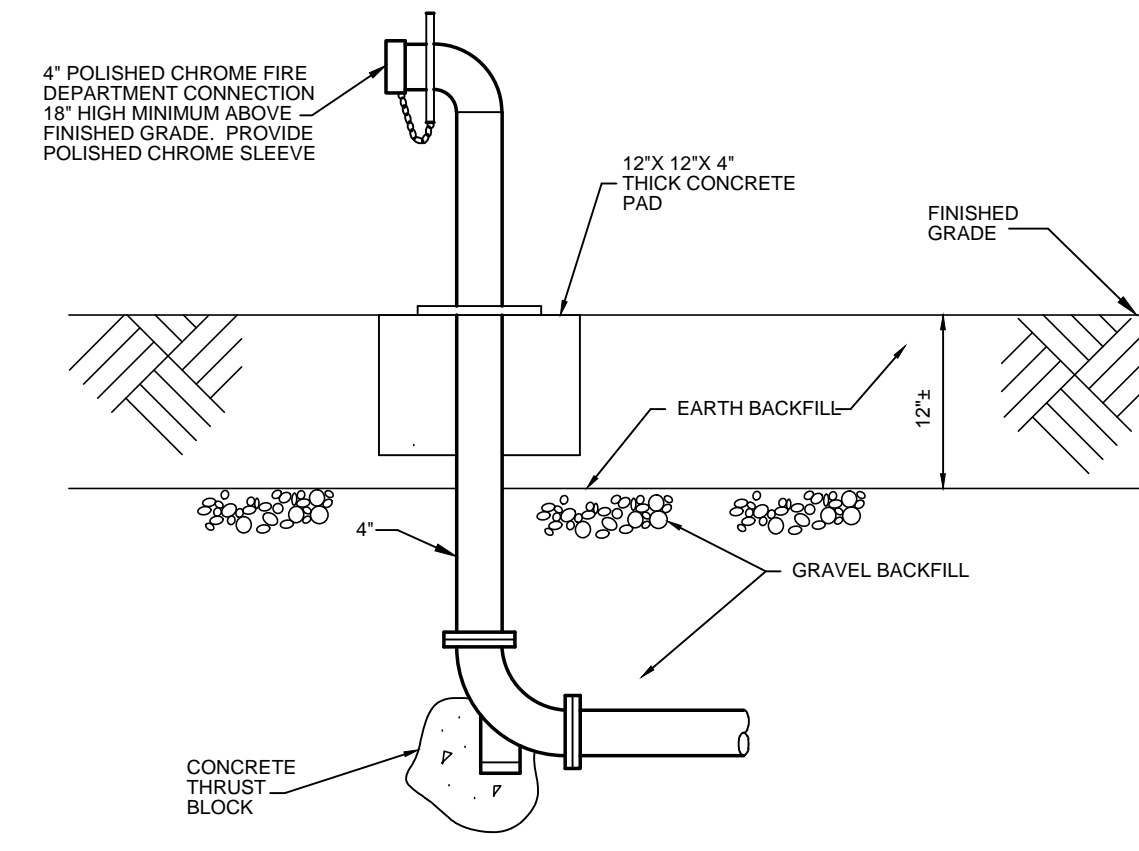
TYPICAL VALVE WITH VALVE BOX DETAIL

NO SCALE



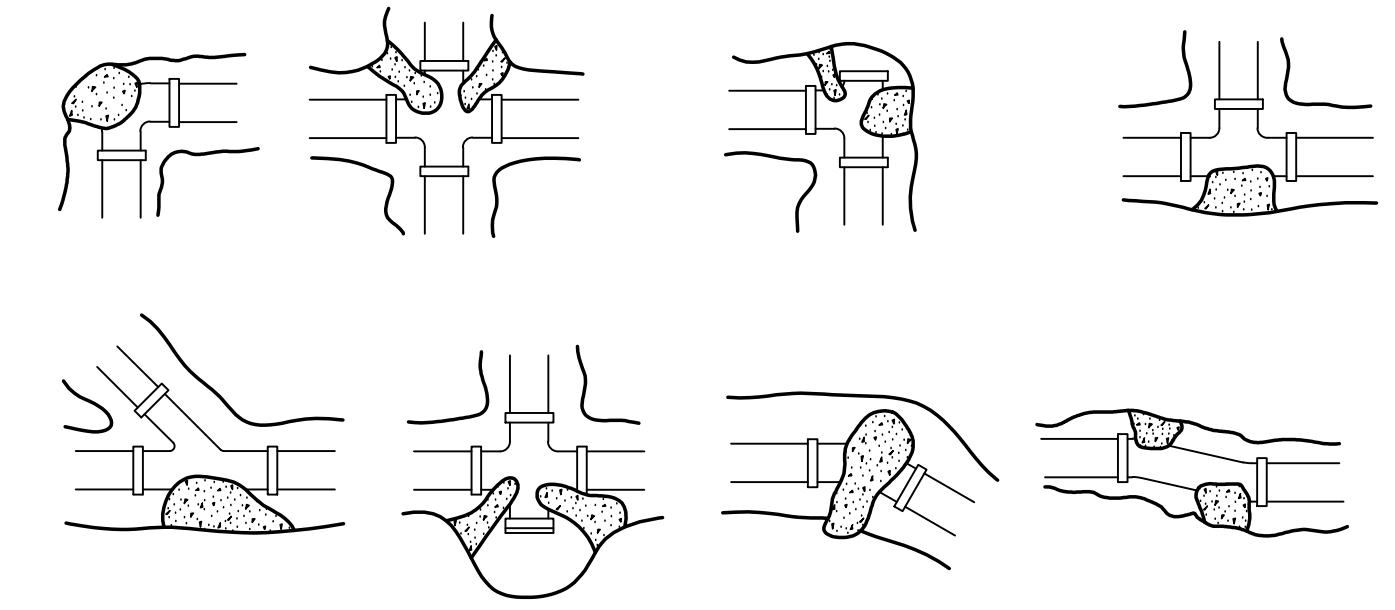
DRAINDOWN MANHOLE DETAIL

NO SCALE



FIRE DEPARTMENT CONNECTION DETAIL

NO SCALE



THRUST/POUND OF PRESSURE				
PIPE SIZE	DEAD END OF TIE	1/4" BEND	1/8" BEND	1/2" BEND
4" & SMALLER	20	40	27	20
6	39	60	34	24
8	68	100	56	31
10	110	160	89	48

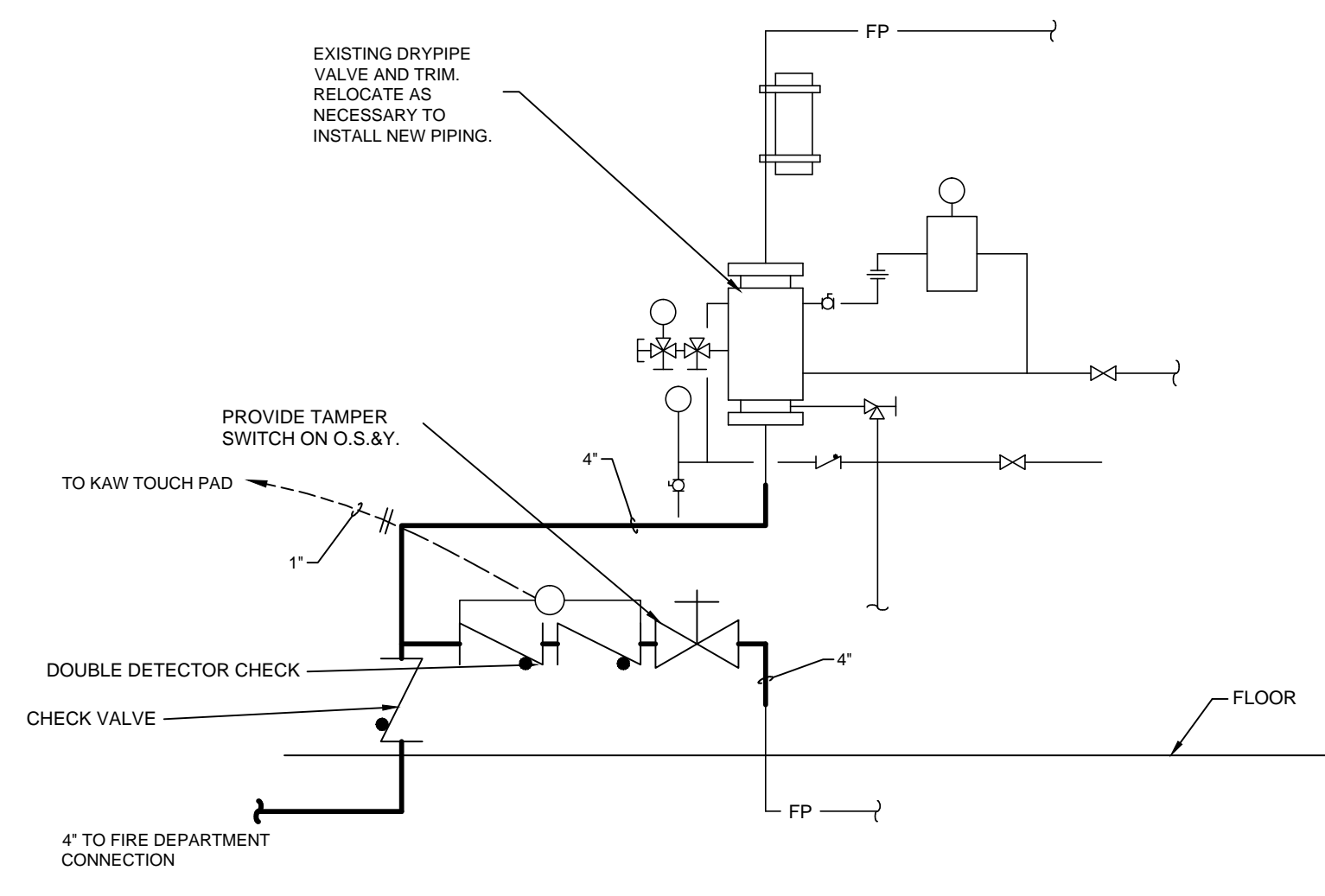
AREA OF BLOCKING = THRUST PER POUND X 150

SOIL BEARING VALUES	
TYPE SOIL	PSF
CEMENTED GRAVEL	4000
COMPACTED SAND	3000
MEDIUM CLAY	2000
SOFT CLAY	1000

NOTE: THRUST BLOCKING IS REQUIRED AT CHANGES IN UNDERGROUND WATER PIPING

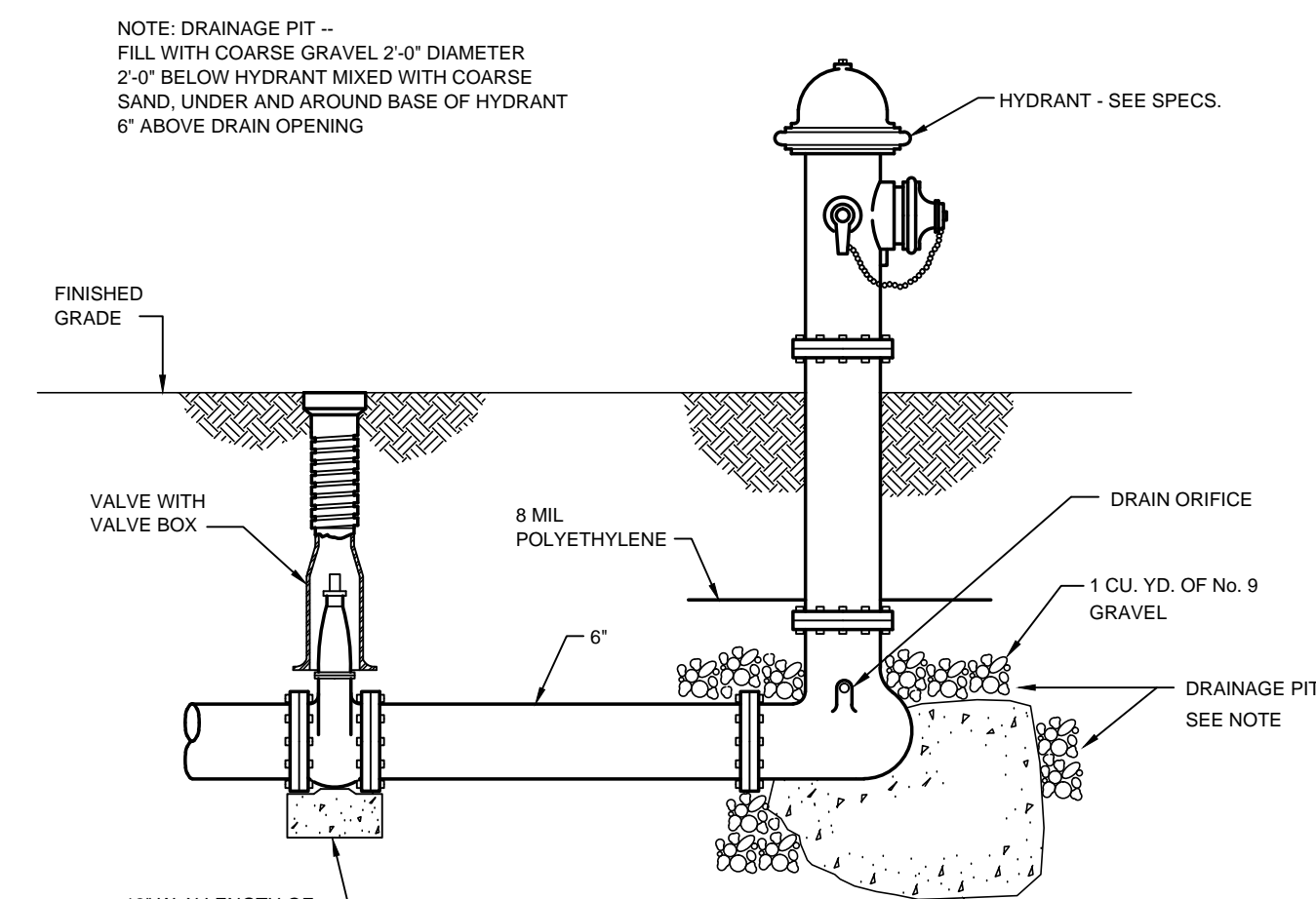
THRUST BLOCK DETAIL

NO SCALE



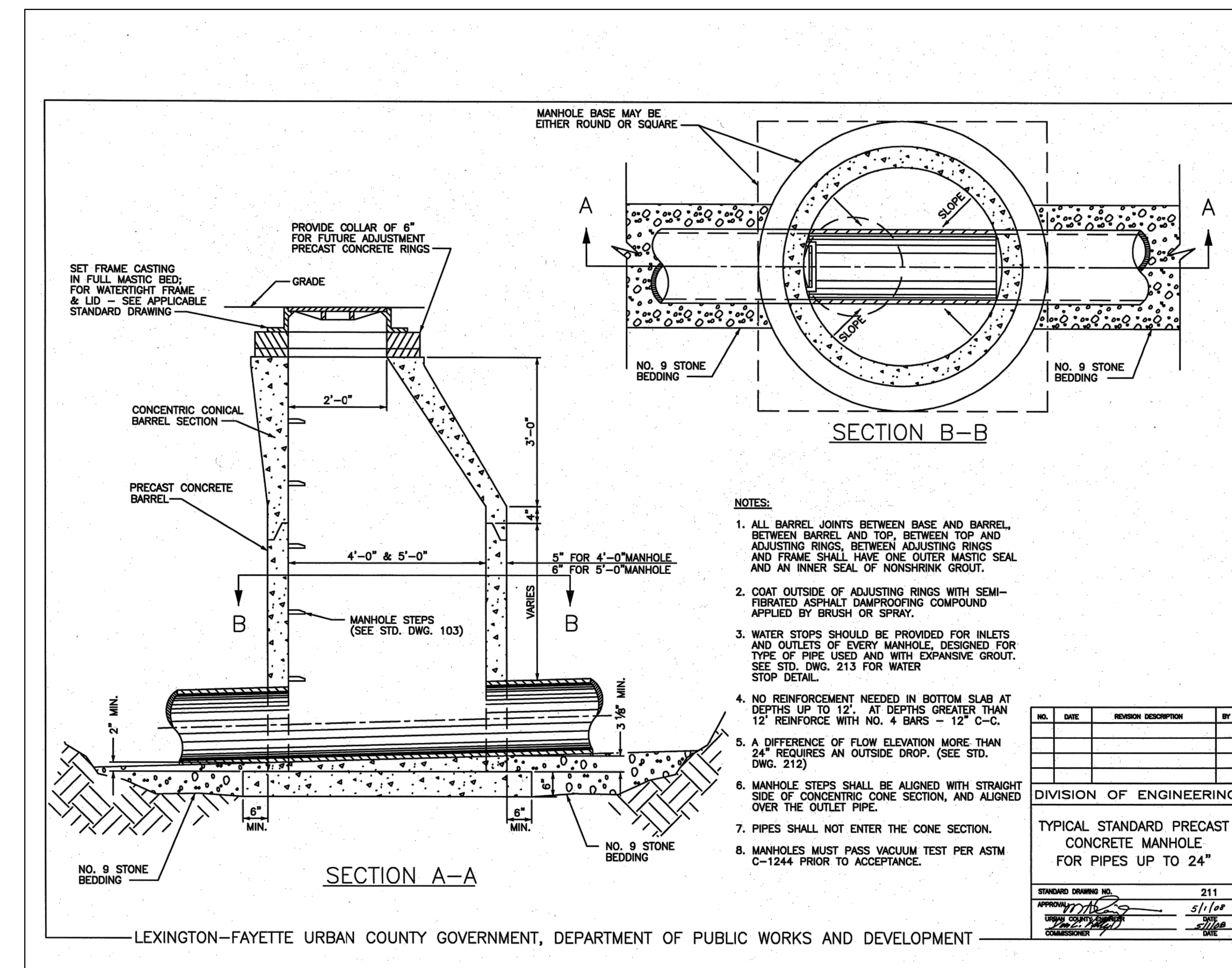
EXISTING FIRE PROTECTION RISER DETAIL

NO SCALE



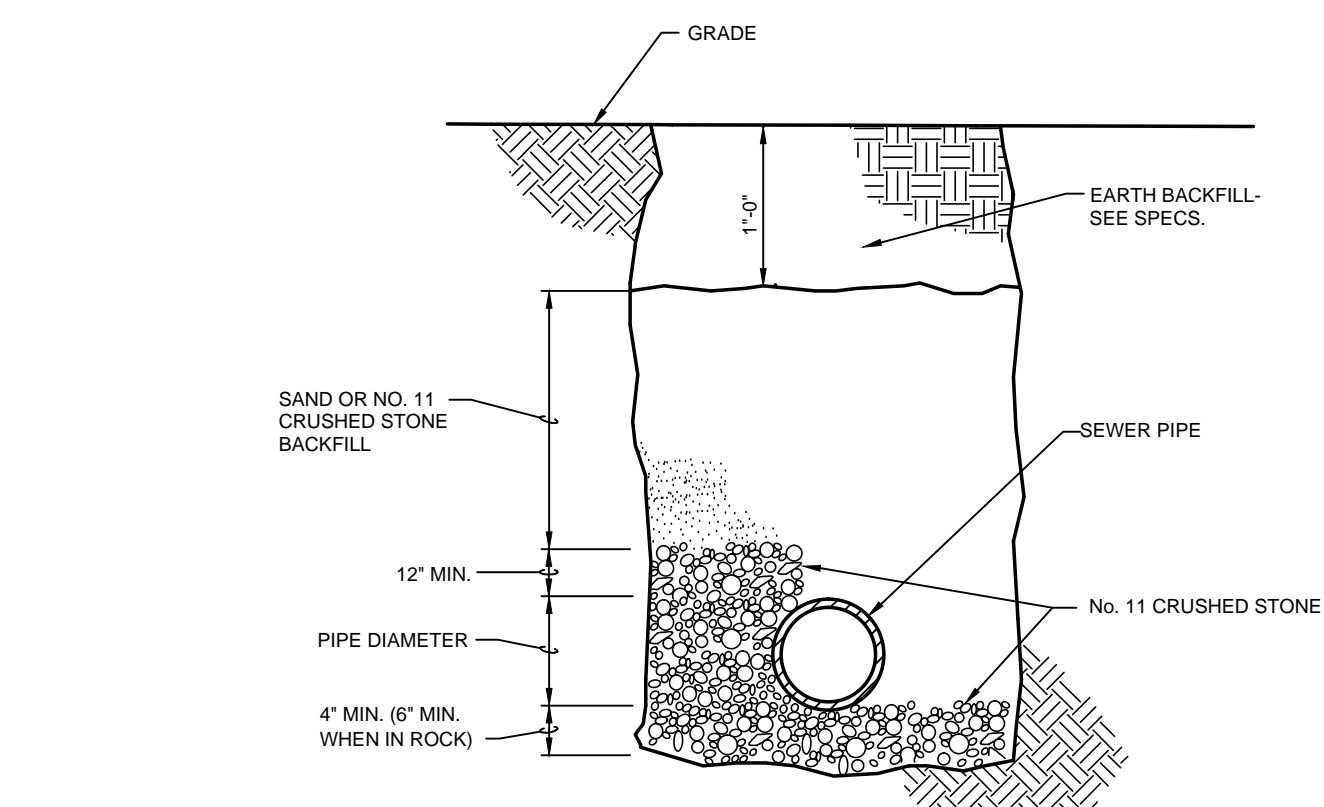
FIRE HYDRANT DETAIL

NO SCALE



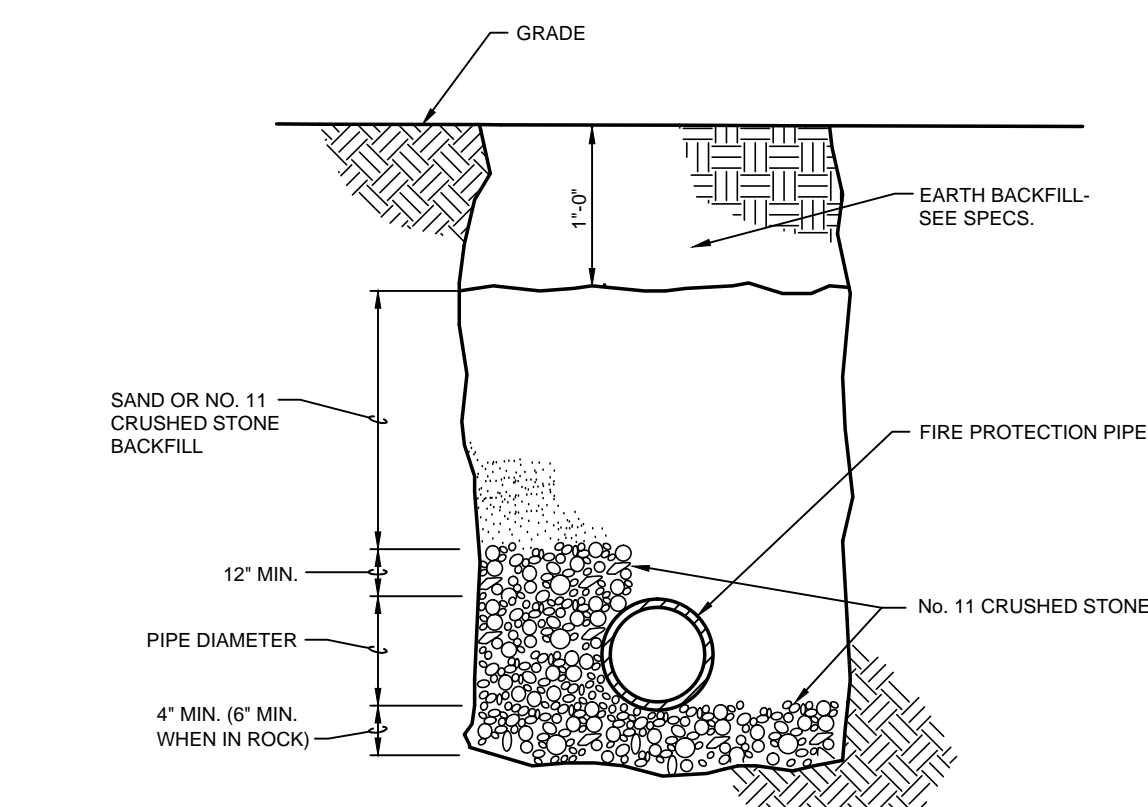
SANITARY MANHOLE DETAIL

NO SCALE



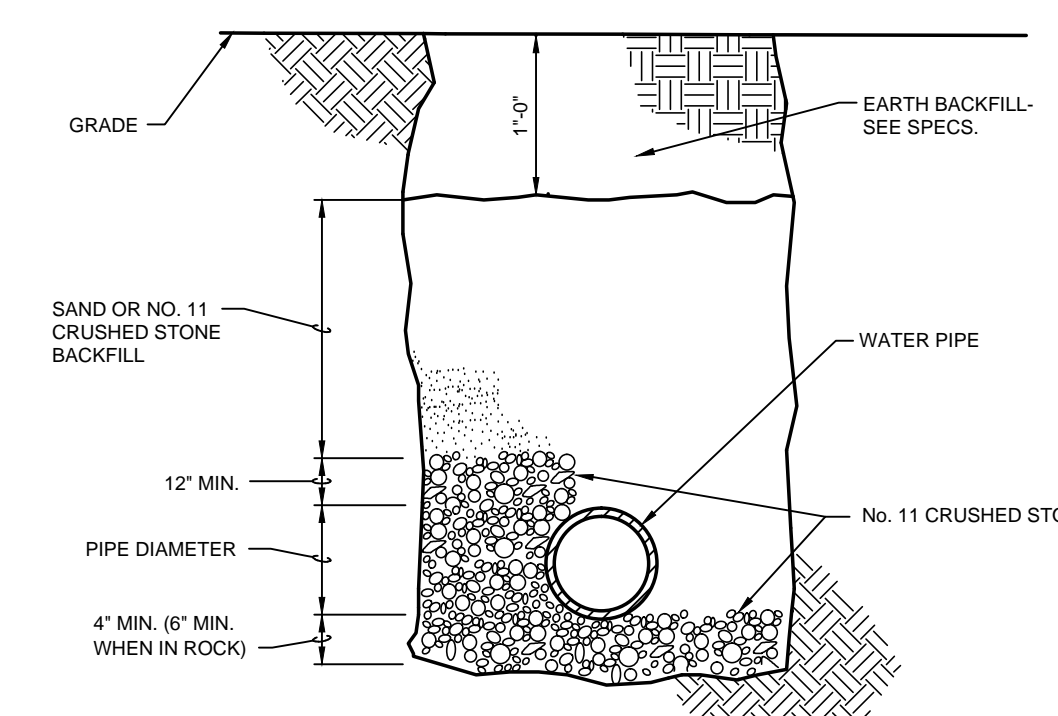
EXTERIOR SEWER PIPING INSTALLATION DETAIL

NO SCALE



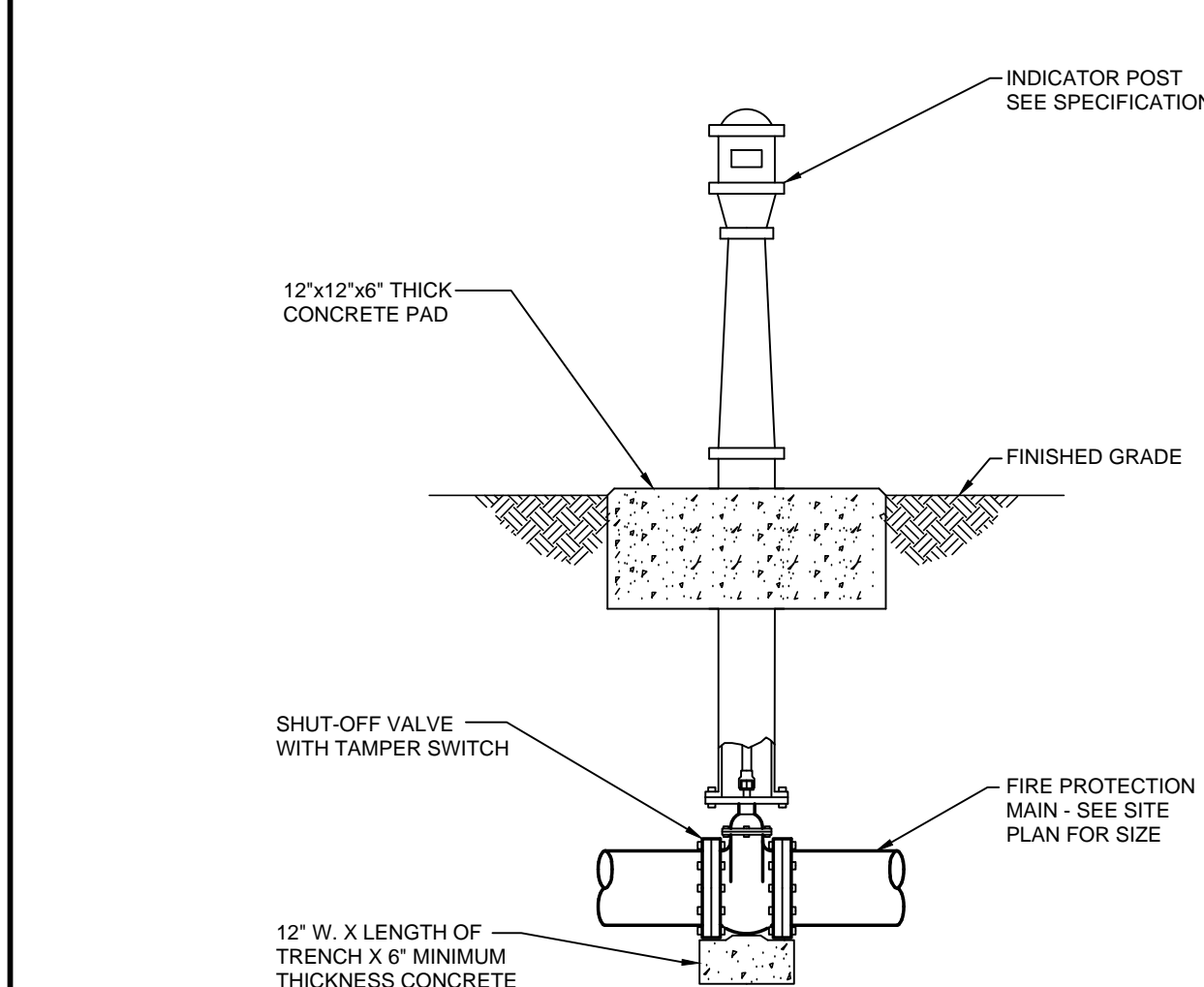
EXTERIOR FIRE PROTECTION PIPING INSTALLATION DETAIL

NO SCALE



EXTERIOR WATER PIPING INSTALLATION DETAIL

NO SCALE



POST INDICATOR VALVE INSTALLATION DETAIL

NO SCALE

RECORD DRAWINGS DATE 04/26/2016

These record drawings have been prepared, in part, on the basis of information compiled and furnished by others. The Engineer has not been responsible for any errors or omissions that may be incorporated as a result of erroneous information provided by others.

STAGGS & FISHER CONSULTING ENGINEERS, INC.



UK# 2397.0

Project No: 1406
Drawn By: WJW
Rev'd By: DRB

ISSUED FOR: CONSTRUCTION

#	DATE	DESCRIPTION

Copyright © Rosstarrant Architects 2014

DESIGN RELEASE 3

U2.3

SITE UTILITIES DETAILS

DATE ISSUED: 03/04/2015

DR3 - SITE UTILITIES DETAILS
FOR THE:
UNIVERSITY OF KENTUCKY
LEXINGTON, KENTUCKY

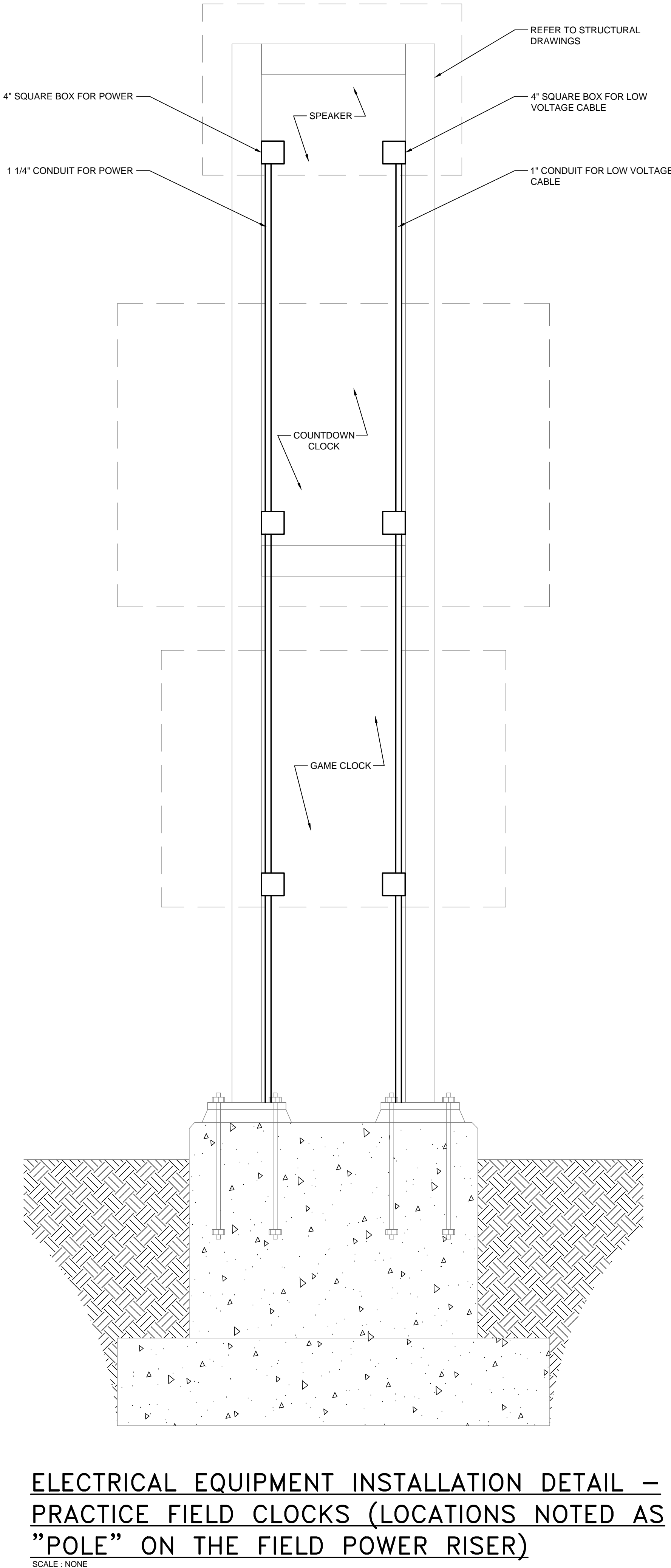
Architect of Record:
Rosstarrant Architects, Inc.
101 Old Lotzville Avenue
Lexington, Kentucky 40502
P 859.254.4018
F 859.251.9244

Structural Engineer:
HNTB Corporation
715 Kirk Drive
Kansas City, Missouri 64105
P 816.472.1201
F 816.472.4563

Local Structural Engineer:
Brown & Hudson, P.C.
2224 Young Drive
Lexington, Kentucky 40505
P 859.543.0733
F 859.543.0733

M&P Engineer:
Staggs & Fisher Consulting Engineers
3284 Lochness Drive
Lexington, Kentucky 40517
P 859.271.3246
F 859.271.3813

Copyright © Rosstarrant Architects 2014



ELECTRICAL EQUIPMENT INSTALLATION DETAIL - PRACTICE FIELD CLOCKS (LOCATIONS NOTED AS "POLE" ON THE FIELD POWER RISER)
SCALE: NONE

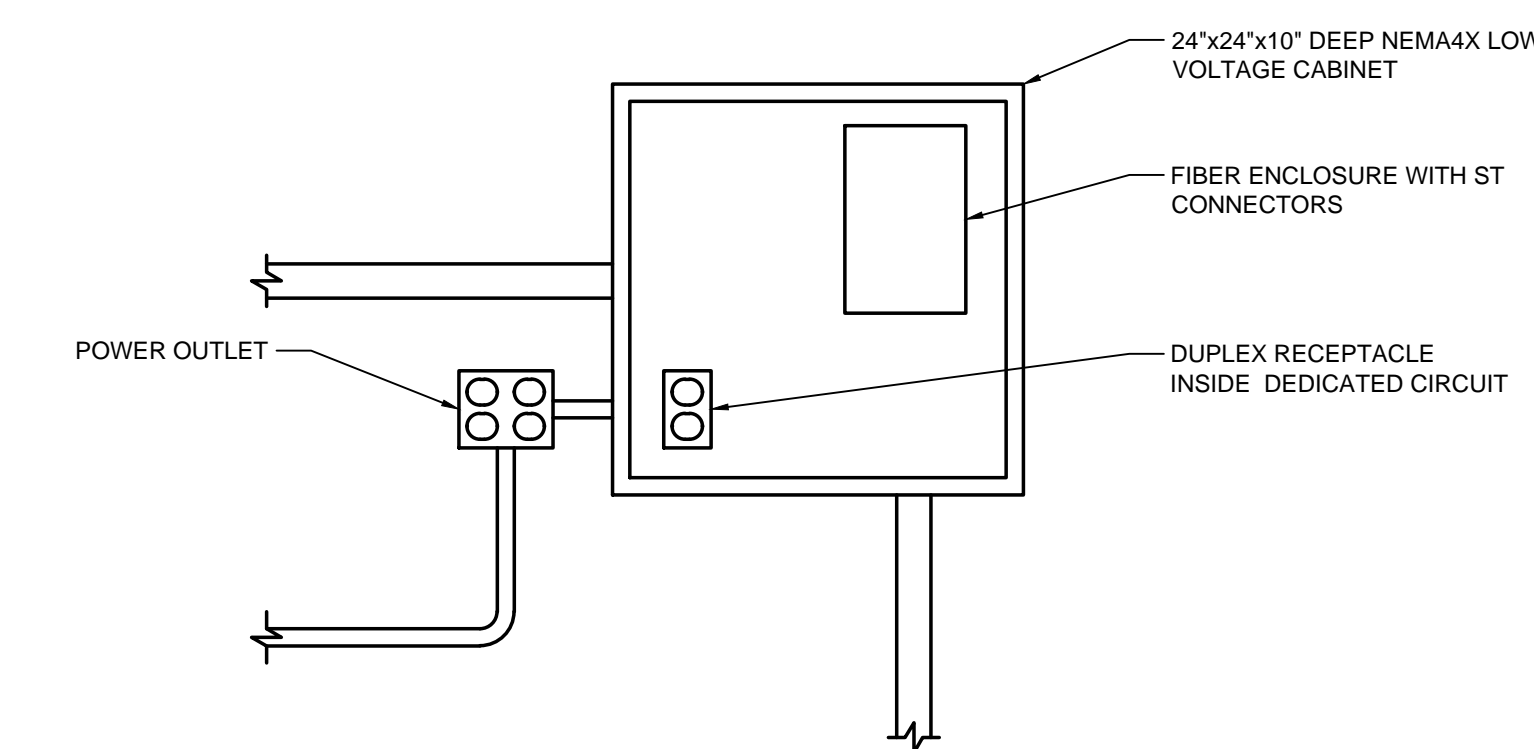
EXTERIOR LIGHTING FIXTURE SCHEDULE

OLF-1 EXTERIOR LED LIGHT POLE WITH A DIE-CAST ALUMINUM HOUSING, EPOXY BASECOAT AND POLYESTER TOPCOAT FINISH, STAINLESS STEEL LATCHES, LOW RANGE ADJUSTABLE FIXTURE TILT, IP66 RATED BOMBARDITE GLASS OPTICS, 8 CHIP 4000K LED LIGHT ENGINE, MULTI-VOLT ELECTRONIC DRIVER, TYPE 4 DISTRIBUTION, 5 YEAR WARRANTY, DARK BRONZE FINISH, AND MOUNTED ON A 1 1/2" ROUND ALUMINUM POLE.

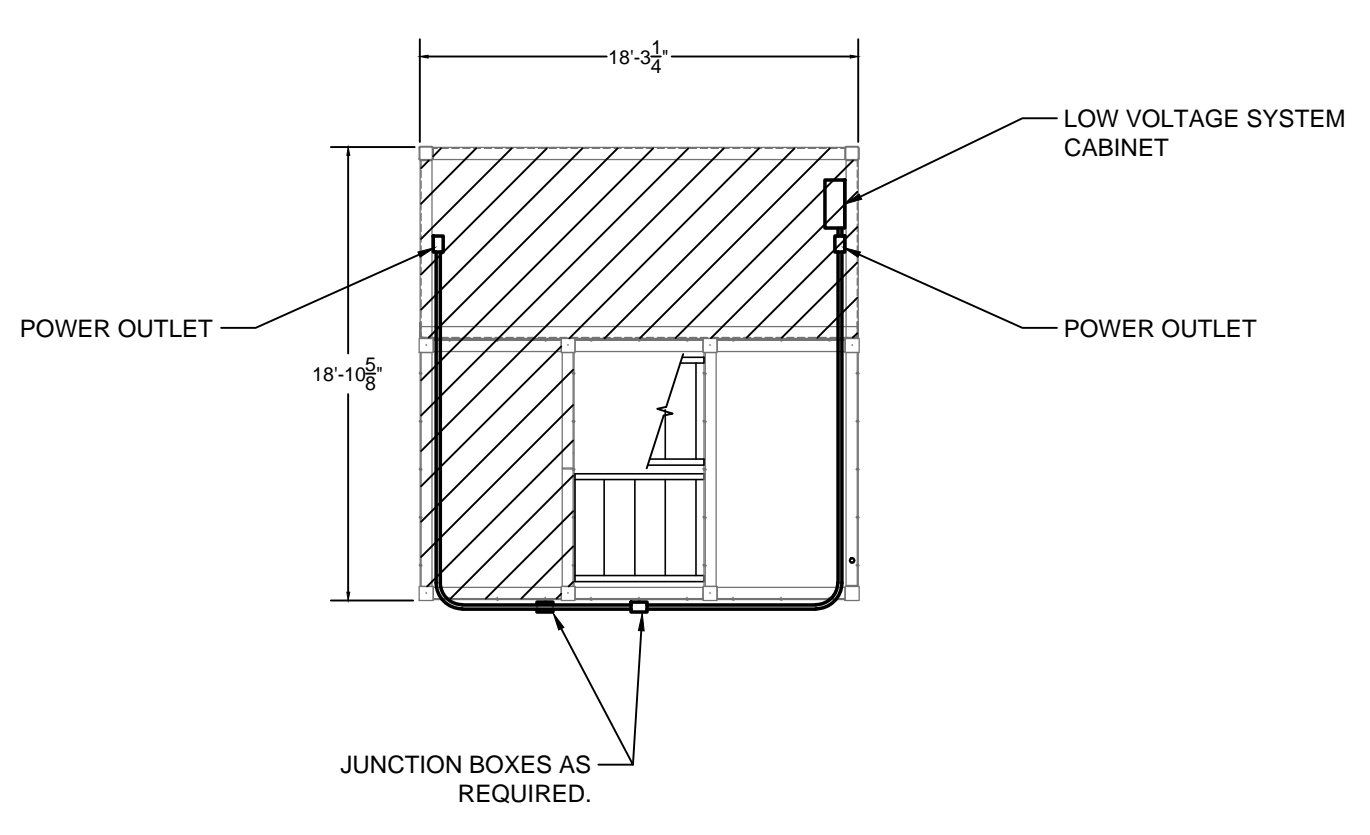
HOLOPHANE MONGOOSE SERIES
KIM EQUAL
HURRELL EQUAL

OLF-2 HULMEN LED FLOODLIGHT WITH SEALED DIE-CAST ALUMINUM HOUSING, INTEGRAL HEAT SINK, FINI, 500W POWER FACTOR >95% THE CLASS 1 ELECTRONIC DRIVER MOUNTED IN DIRECT CONTACT WITH THE CASTING, DRIVER LIFE OF 100,000 HOURS WITH <1% FAILURE RATE, IP 66 RATING, ZINC-INFLUENCED SUPER DURABLE TIG WIRE MOUNTED POWDER COAT FINISH, SPECULAR REFLECTORS, 5000 K (20 CR MINI) LIGHT ENGINES CONSIST OF CHIP-ON-BOARD (COB) LEDS DIRECTLY COUPLED TO THE HOUSING, 32,700 DELIVERED LUMENS, 111 LUMENS PER WATT, IES RATED LIFE OF 100,000 HOURS AT 25°C, LOW SURGE PROTECTION, UPPER/BOTTOM VISOR, YOKO MOUNTING ASSEMBLY, BLACK FACELATE, INTEGRAL PHOTOCELL, WIDE FLOOD DISTRIBUTION, CAL LISTED RATED FOR -40°C MINIMUM AMBIENT CONDITIONS, AND FIVE YEAR LIMITED WARRANTY.

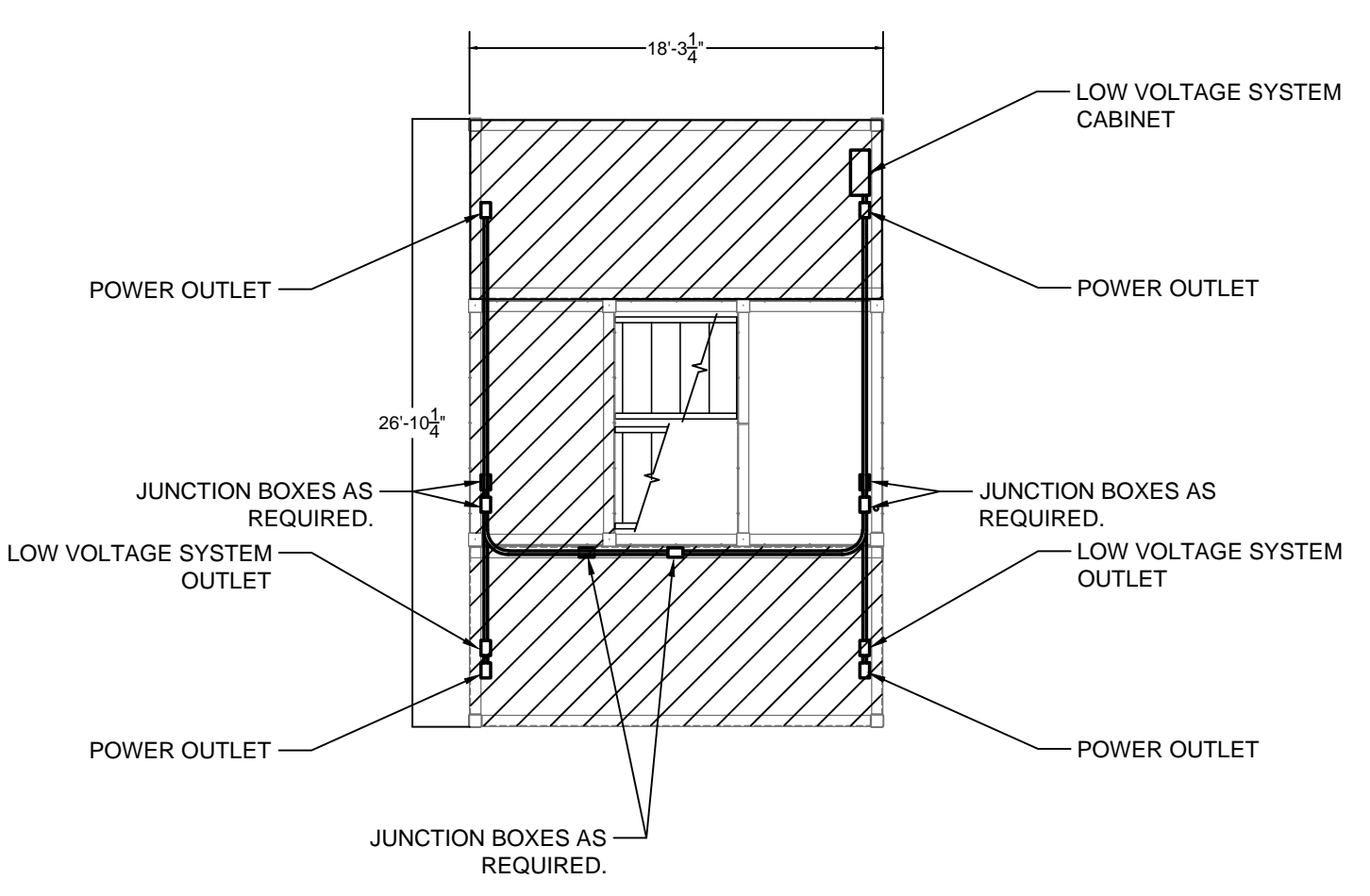
LITHONIA HLFI SERIES
WISLITE EQUAL
MUSICO EQUAL



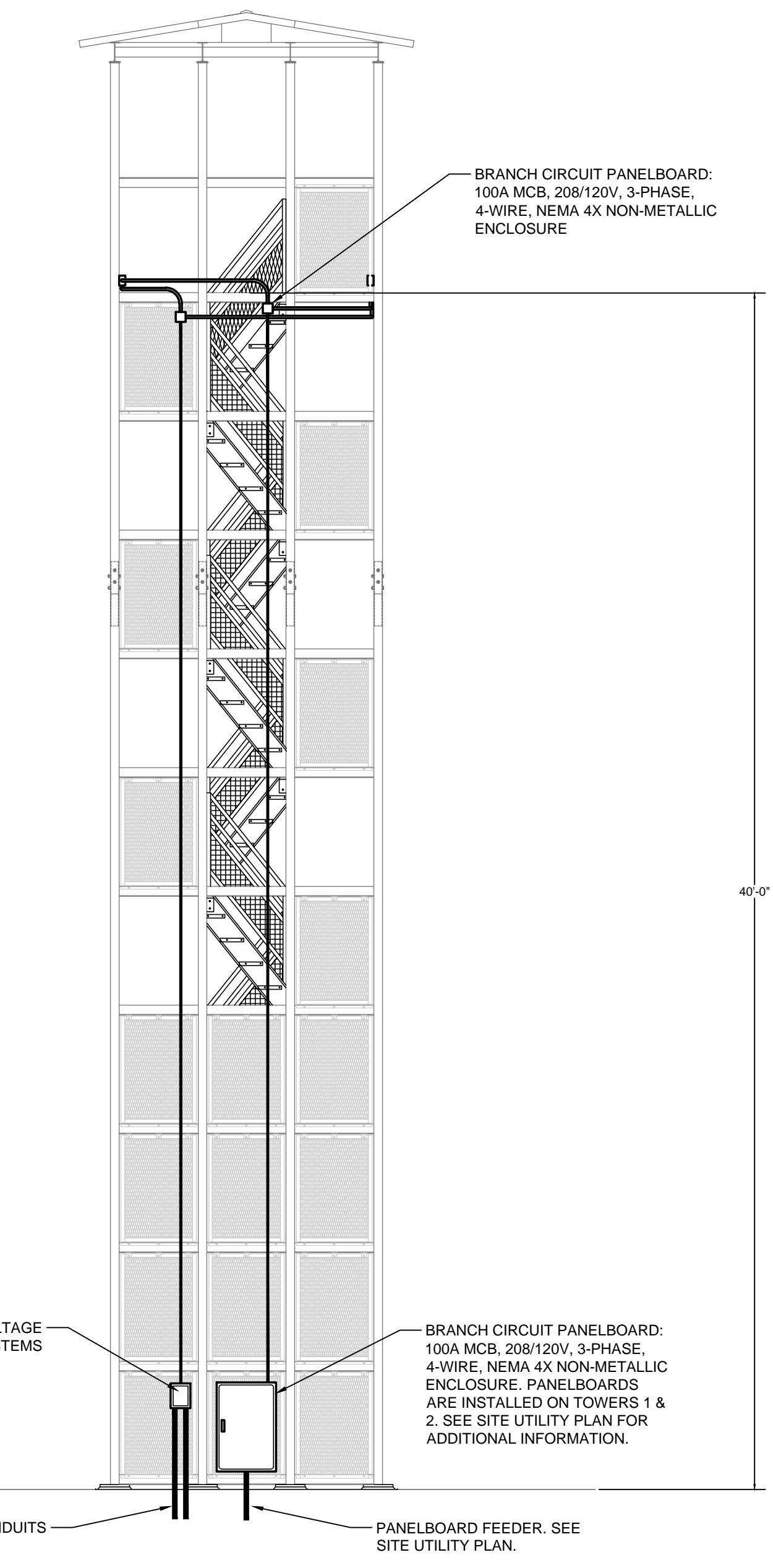
TOWER LOW VOLTAGE CABINET DETAIL AT UPPER LEVEL
SCALE: NONE



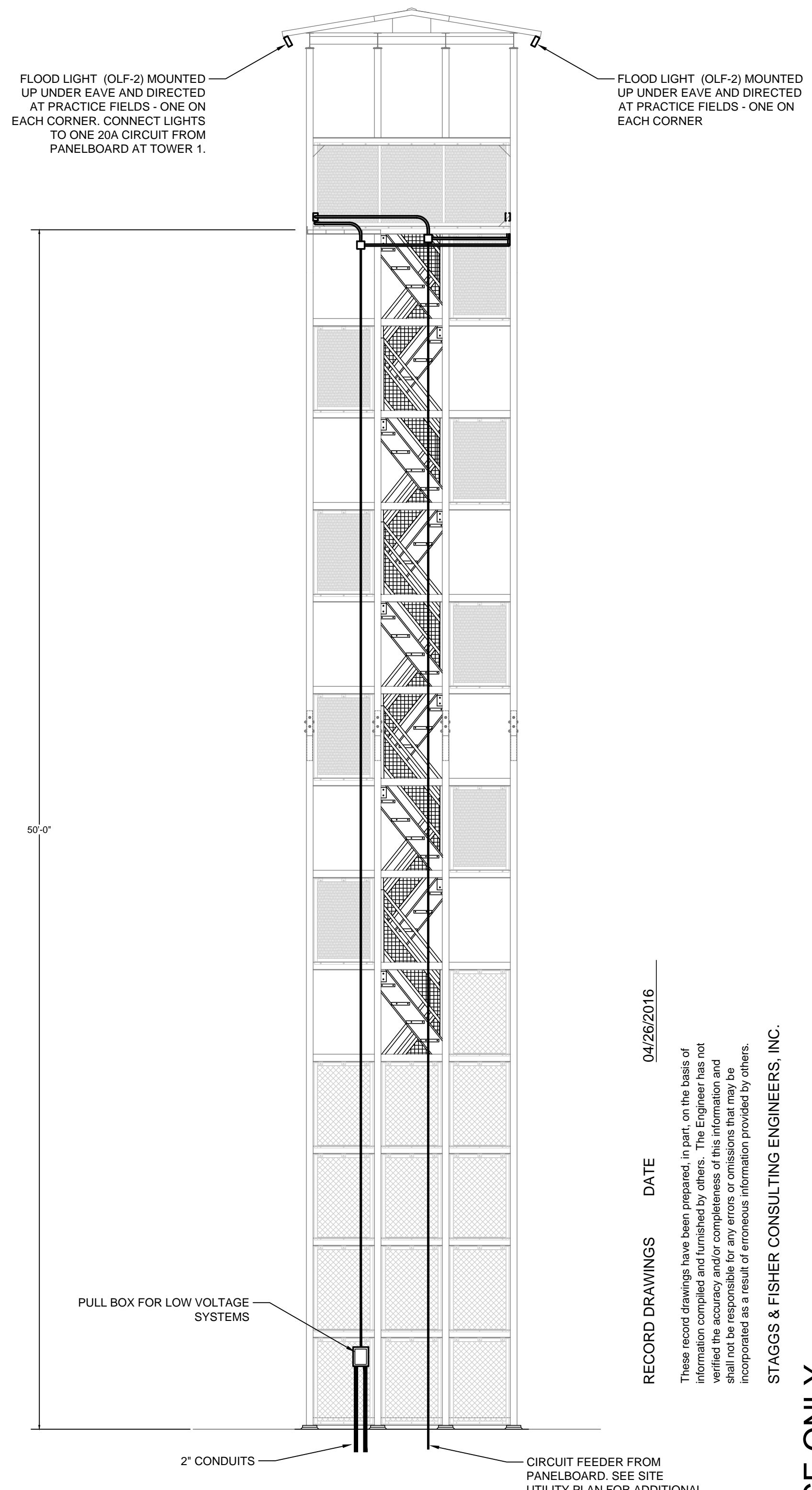
ELECTRICAL EQUIPMENT INSTALLATION DETAIL - EAST/WEST TOWERS OBSERVATION LEVEL
SCALE: NONE



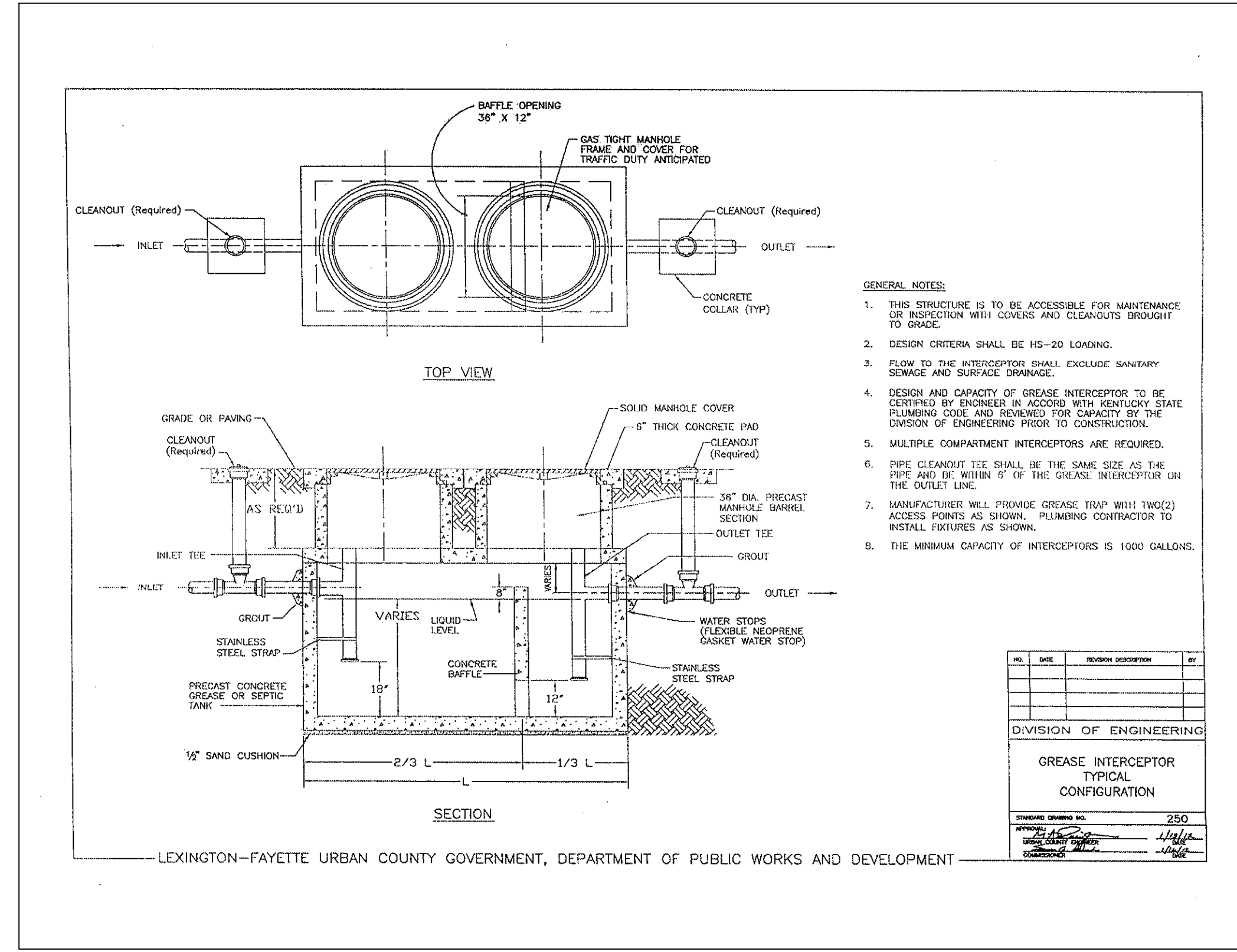
ELECTRICAL EQUIPMENT INSTALLATION DETAIL - EAST/WEST TOWERS OBSERVATION LEVEL
SCALE: NONE



ELECTRICAL EQUIPMENT INSTALLATION DETAIL - EAST/WEST TOWERS
SCALE: NONE



ELECTRICAL EQUIPMENT INSTALLATION DETAIL - CENTER TOWER
SCALE: NONE



- GENERAL NOTES:**
1. THIS STRUCTURE IS TO BE ACCESSIBLE FOR MAINTENANCE OR REVISION WITH CONCRETE AND CLEANOUT BROUGHT TO GRADE.
 2. DESIGN CONCRETE SHALL BE 15-20 LBS/M.YD.
 3. FLOW TO THE INTERCEPTOR SHALL ENVELOPE SANITARY SEWER AND SERVICE DRAINAGE.
 4. DESIGN AND CAPACITY OF GREASE INTERCEPTOR TO BE DETERMINED BY ENGINEER IN ACCORD WITH KENTUCKY STATE PLUMBING CODE AND REFERRED TO CONTRACTOR BY THE DESIGN OF THE PLUMBING CONTRACTOR TO CONSTRUCTION.
 5. MULTIPLE COMPARTMENT INTERCEPTORS ARE REQUIRED.
 6. PIPE CLEANOUT TEE SHALL BE THE SAME SIZE AS THE PIPE AND BE WITHIN 18\"/>

NO.	DATE	REVISION	BY

DIVISION OF ENGINEERING
CONFIGURATION

- GENERAL NOTES:**
- A. ALL ELECTRICAL POWER OUTLETS ARE QUADPLEX 120V, 1-PHASE, GFCI TYPE WITH DIE-CAST METAL IN-USE WEATHERPROOF COVERS.
 - B. ALL LOW VOLTAGE SYSTEMS OUTLETS ARE TO BE 6-PORT WITH ONE DATA PORT, ONE PRIVATE NETWORK PORT, A CONTROL PORT FOR THE GAME CLOCKS, A CONTROL PORT FOR THE PLAY CLOCK, AND TWO BLANK PORTS FOR FUTURE USE.
 - C. ALL CONDUIT SHALL BE GALVANIZED RIGID STEEL WITH WEATHERPROOF BOXES.
 - D. PULL BOX FOR LOW VOLTAGE SYSTEMS SHALL BE 18"x16"x9" DEEP, NON-METALLIC ENCLOSURE WITH HINGED DOOR AND TWO LATCHES, PENTAIR MODEL A18148/FORKS OR EQUAL.
 - E. ROUTE CONDUITS AS CLOSE AS POSSIBLE TO TOWER STRUCTURAL AND FRAMING MEMBERS.
 - F. ALL CONDUITS ARE TO BE PAINTED TO MATCH THE TOWER FINISH. SEE PAINTING SPECIFICATIONS FOR ADDITIONAL INFORMATION.
 - G. SEE EXTERIOR LIGHTING FIXTURE SCHEDULE FOR TOWER LIGHTING INFORMATION.

RECORD DRAWINGS DATE 04/26/2016

These record drawings have been prepared, in part, on the basis of information compiled and furnished by others. The Engineer has not verified the accuracy and/or completeness of this information and incorporated as a result of erroneous information provided by others.

STAGGS & FISHER CONSULTING ENGINEERS, INC.

HNTB rosstarrant architects

101 Old Lafayette Avenue, Lexington, Kentucky 40502
402-271-3246 • p 859.543.0733 • f 859.543.0733

HNTB Corporation
715 Kirk Drive
Kansas City, Missouri 64105
816.472.1201 • f 816.472.4553

STATE OF KENTUCKY
DANIEL H. BRUNSON
REGISTERED PROFESSIONAL ENGINEER

SF Stagg and Fisher
Consulting Engineers, Inc.
101 Old Lafayette Avenue
Lexington, Kentucky 40502
402-271-3246 • p 859.543.0733 • f 859.543.0733

DR3 - SITE UTILITIES DETAILS
FOR THE:
UNIVERSITY OF KENTUCKY
LEXINGTON, KENTUCKY

Architect of Record:
C&R Engineer
Rosstarrant Architects, Inc.
101 Old Lafayette Avenue
Lexington, Kentucky 40502
p 859.254.4018
f 859.251.9244

Structural Engineer:
National Structural Engineer
HNTB Corporation
715 Kirk Drive
Kansas City, Missouri 64105
p 816.472.1201
f 816.472.4553

Local Structural Engineer:
Brown & Kubison, PSC
2224 Young Drive
Lexington, Kentucky 40505
p 859.543.0733
f 859.543.0733

M&P Engineer:
Stagg & Fisher Consulting Engineer
3284 Lochness Drive
Lexington, Kentucky 40517
p 859.271.3246
f 859.271.3813

UK

UK# 2397.0

Project No: 1406
Drawn By: WJW
Rev'd By: DRB

ISSUED FOR: CONSTRUCTION

#	DATE	DESCRIPTION
1	04-26-2015	IFUGS DETAIL
2	05-26-2015	TOWER BID

Copyright © Rosstarrant Architects 2014
DESIGN RELEASE 3

U2.4 R1
SITE UTILITIES DETAILS
DATE ISSUED:
03/04/2015

REFERENCE ONLY

