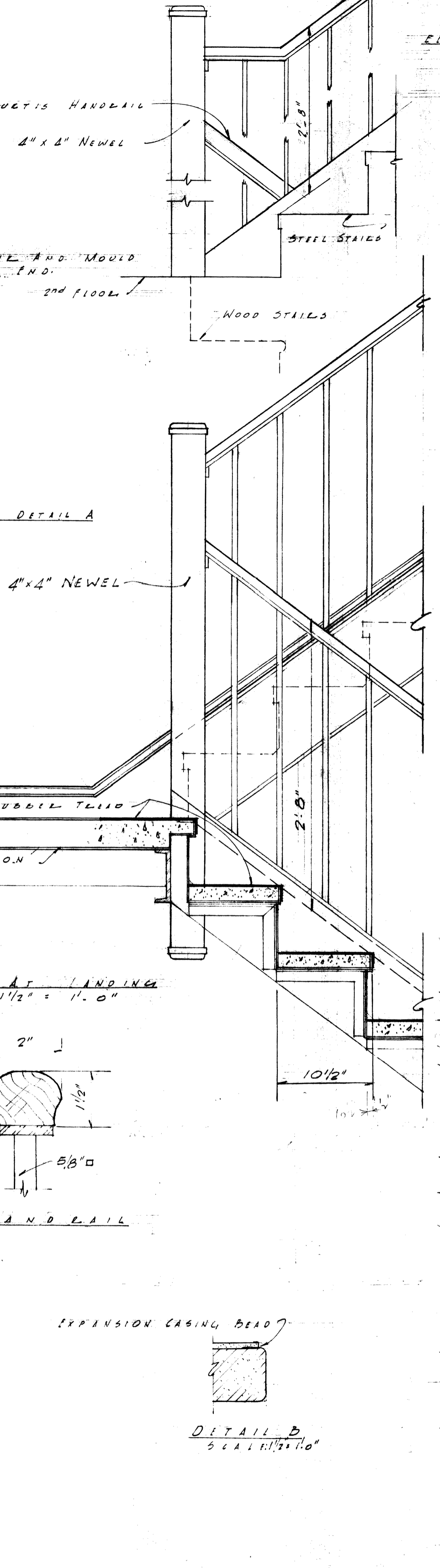
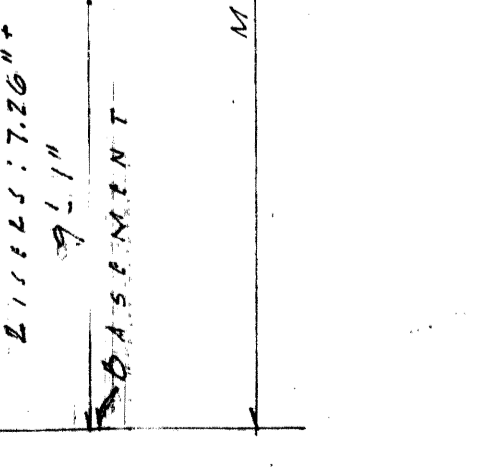
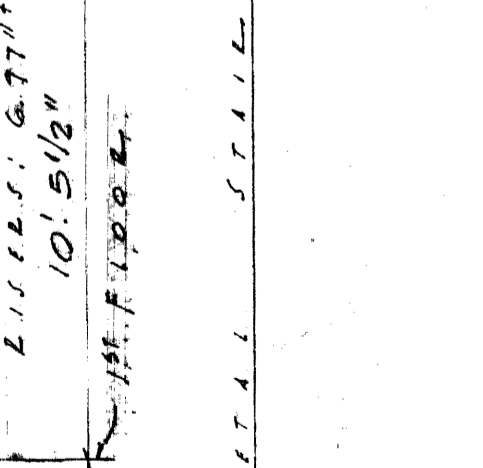
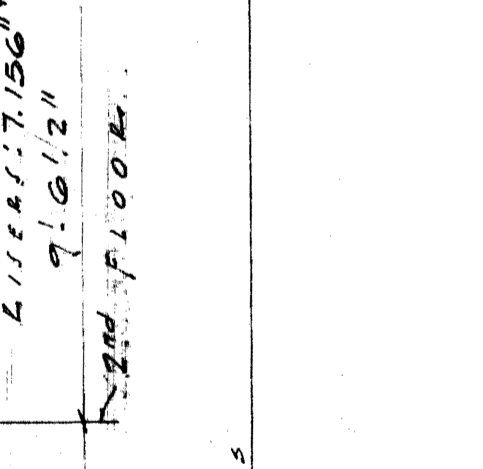
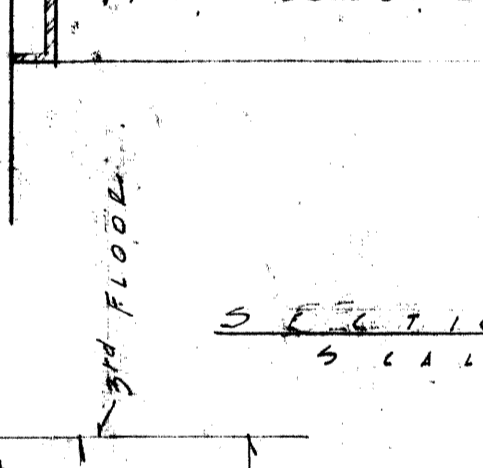
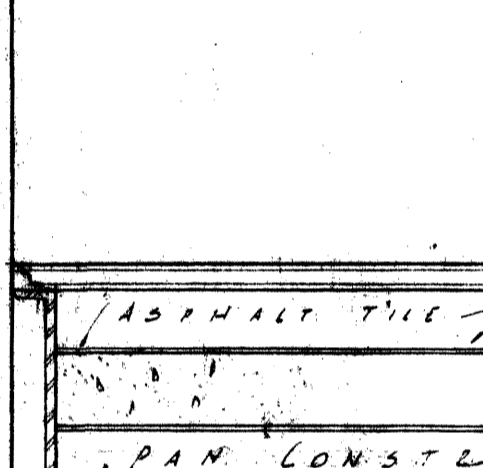
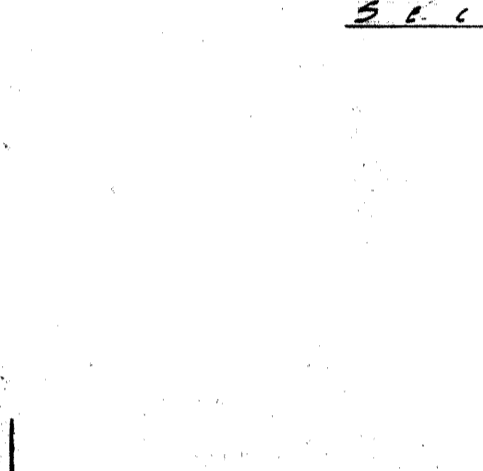
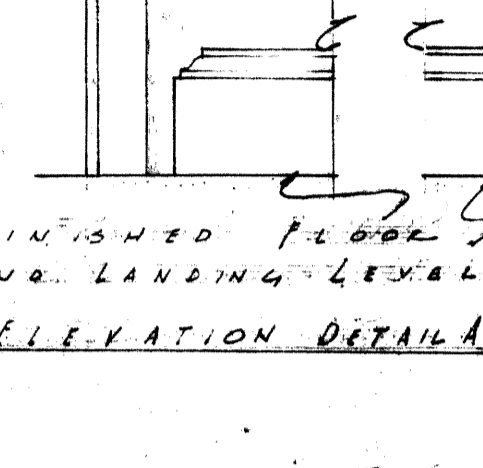
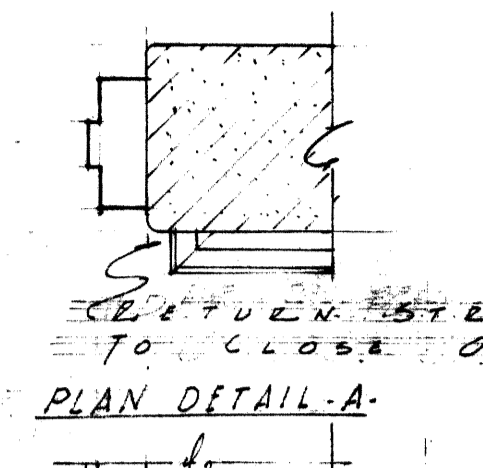
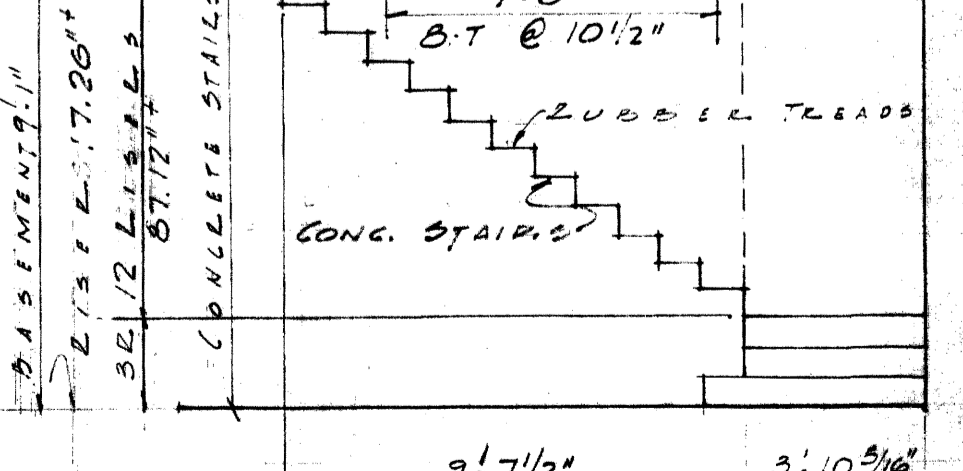
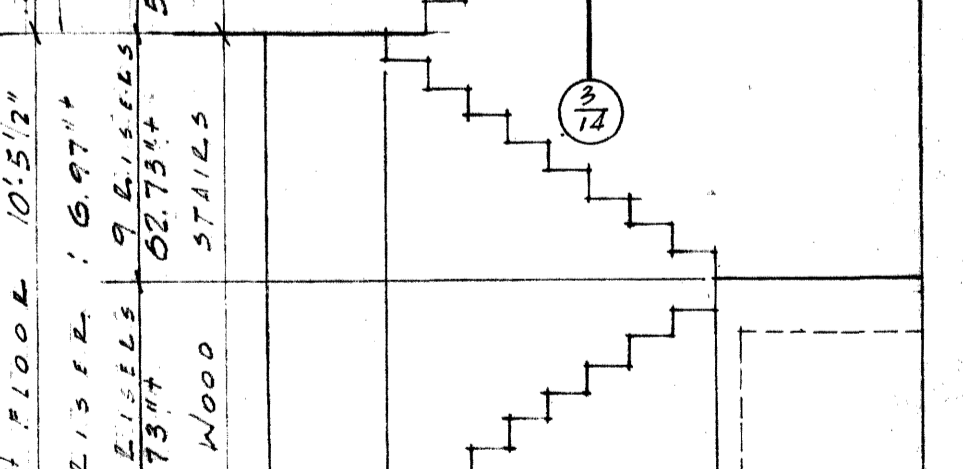
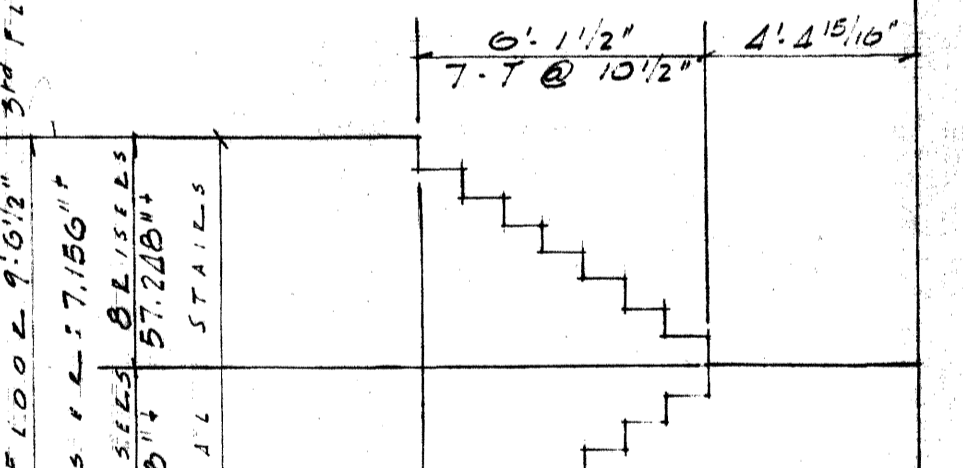
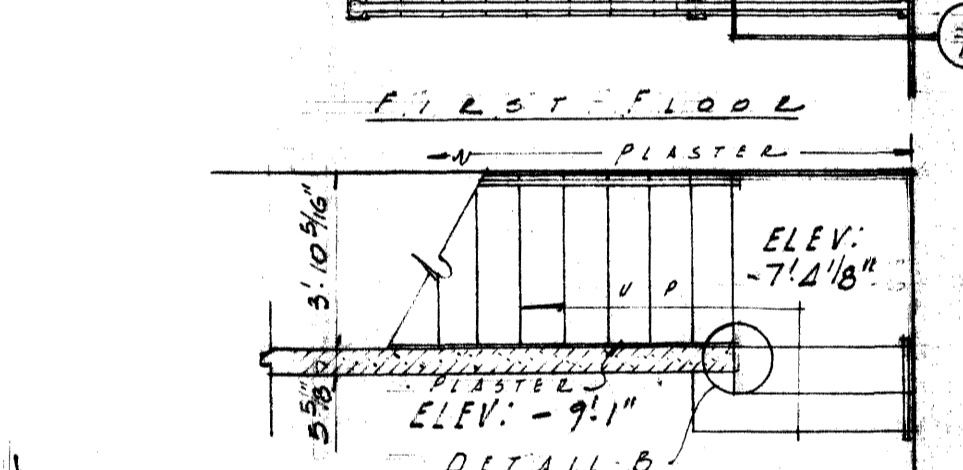
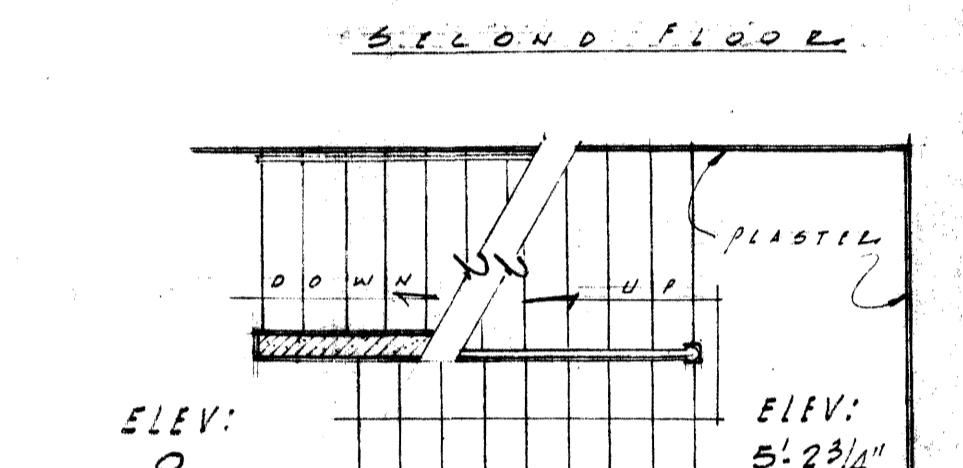
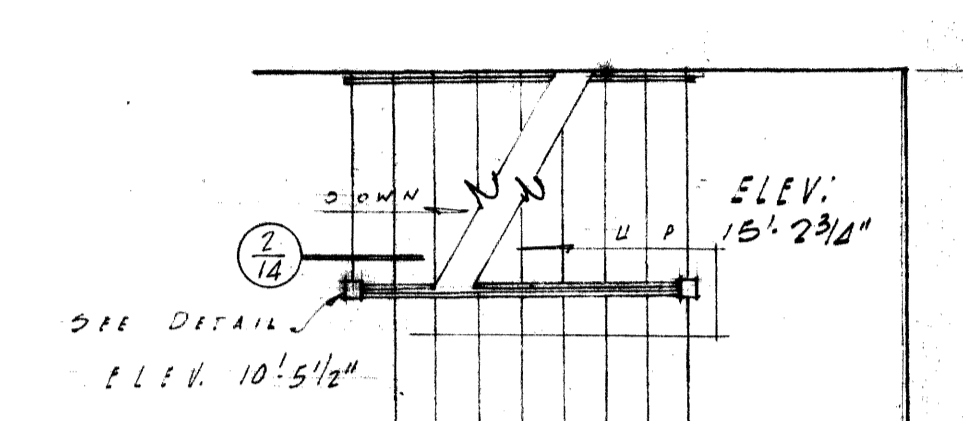
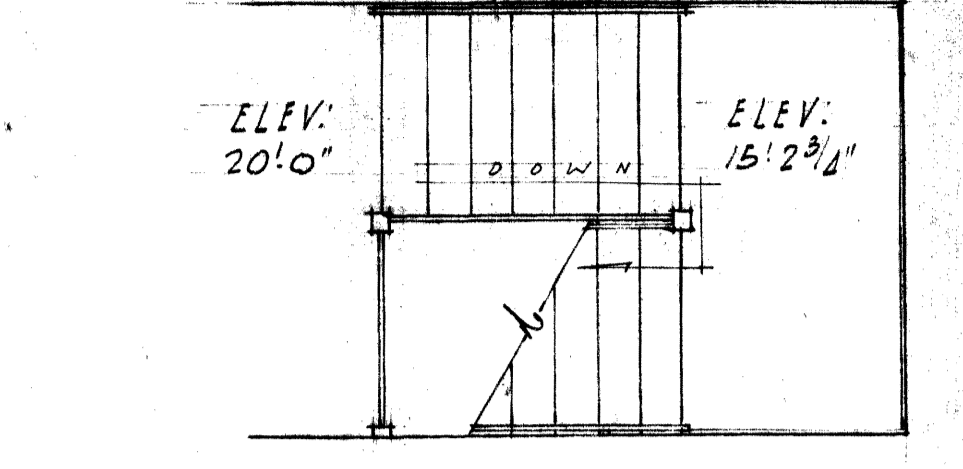


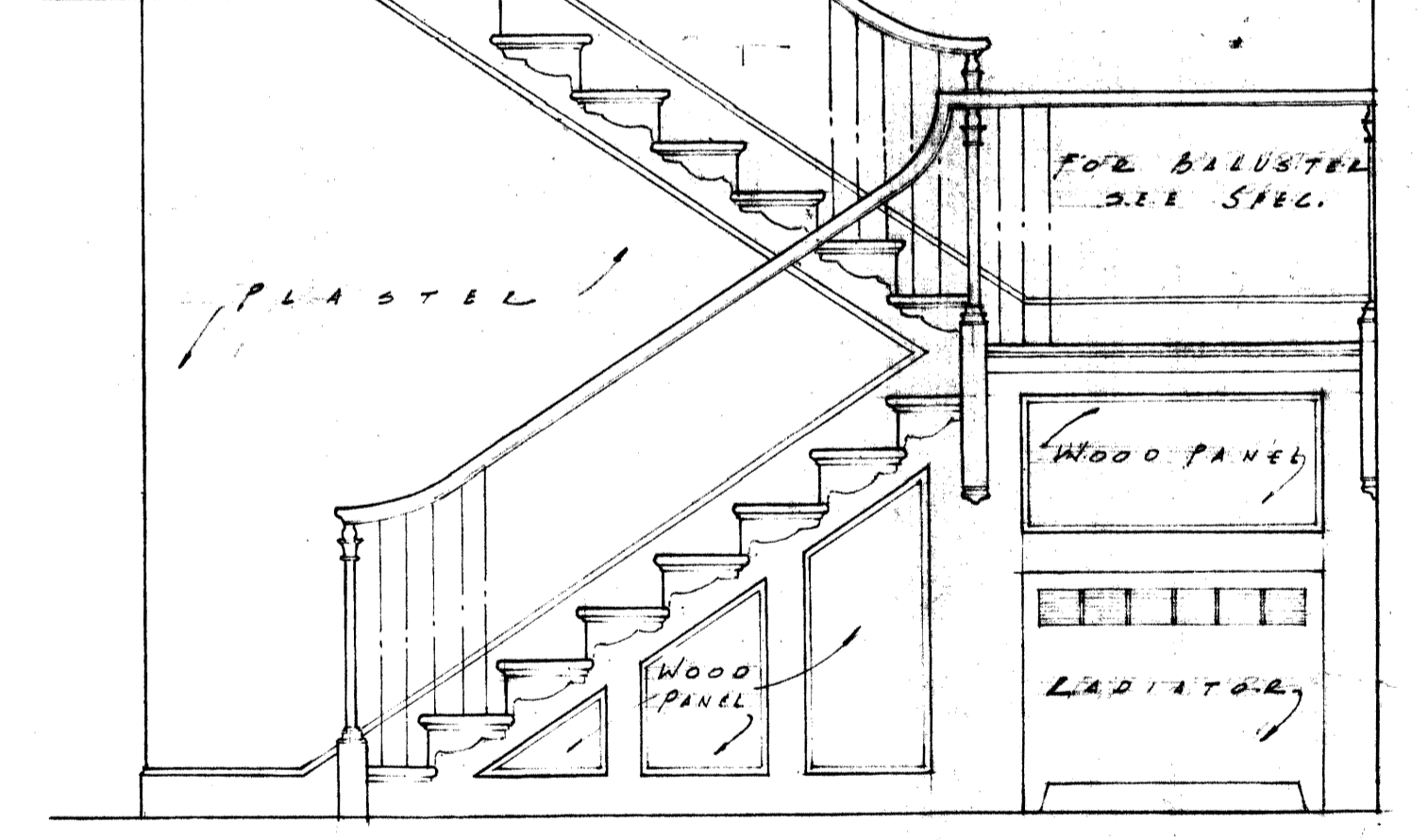
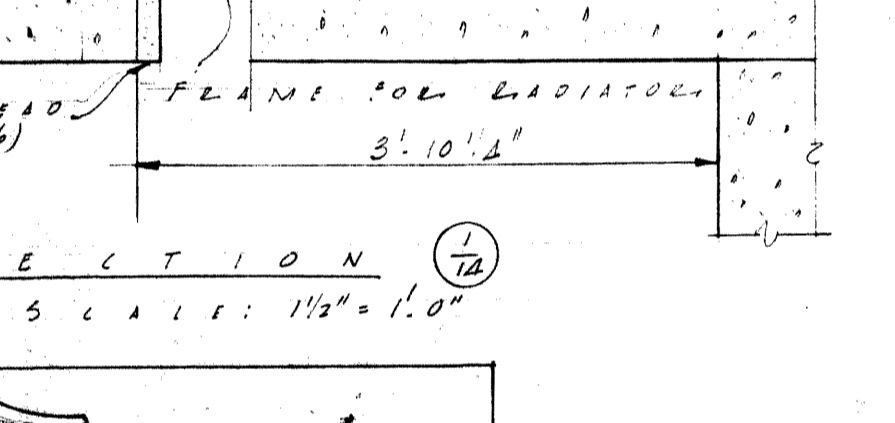
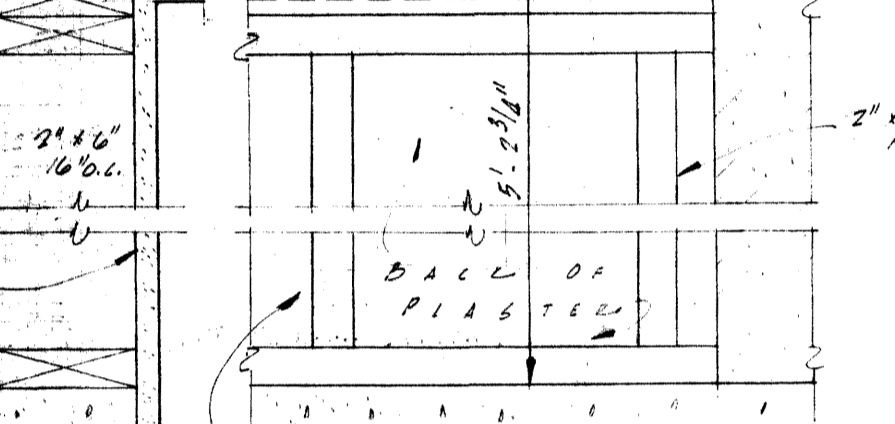
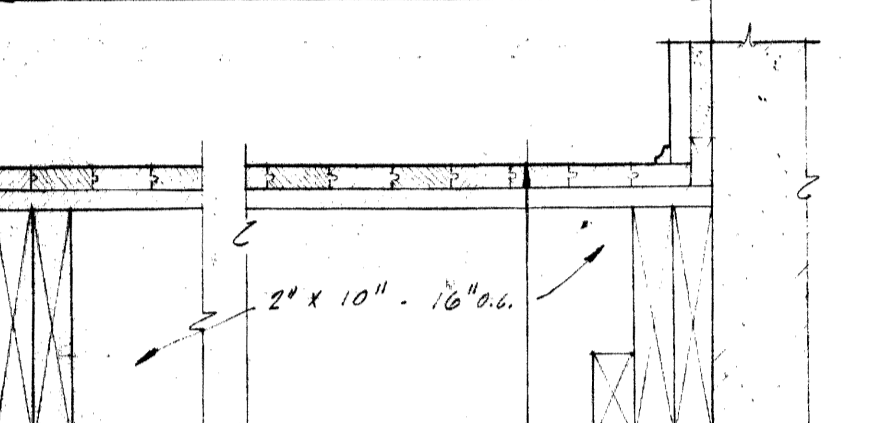
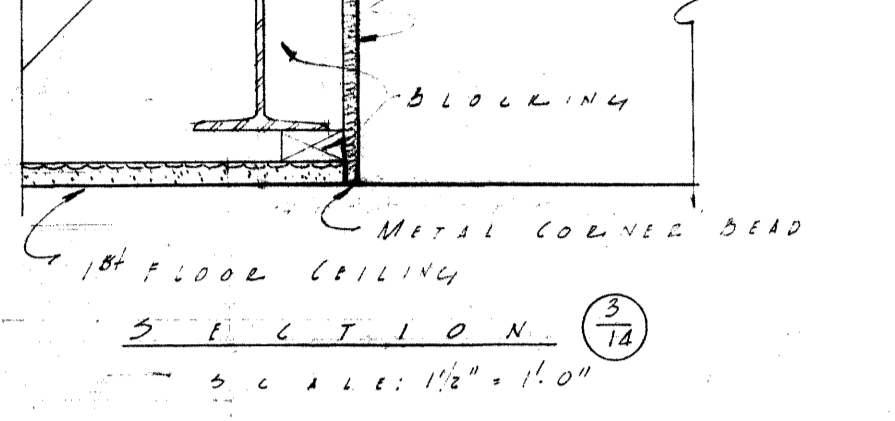
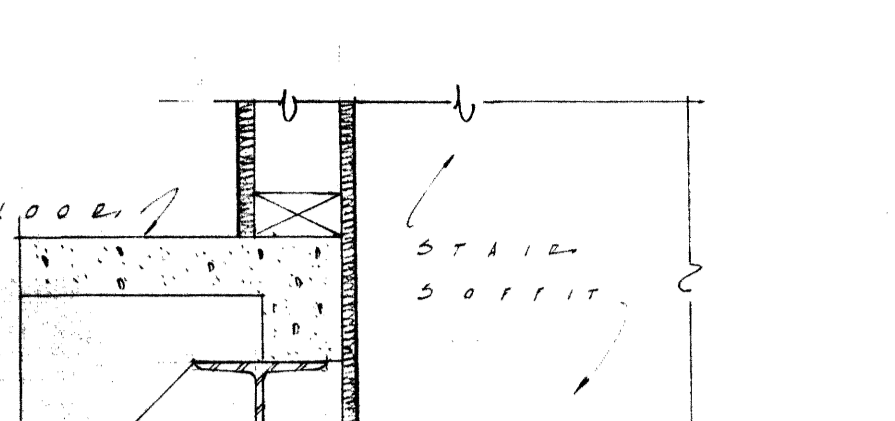
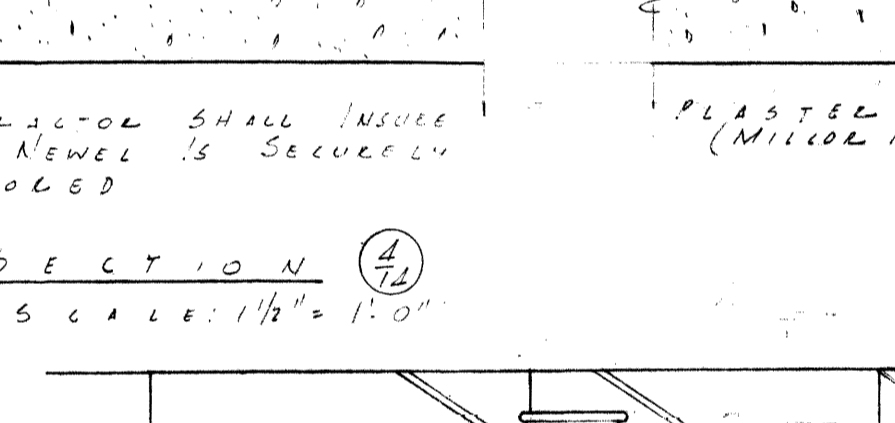
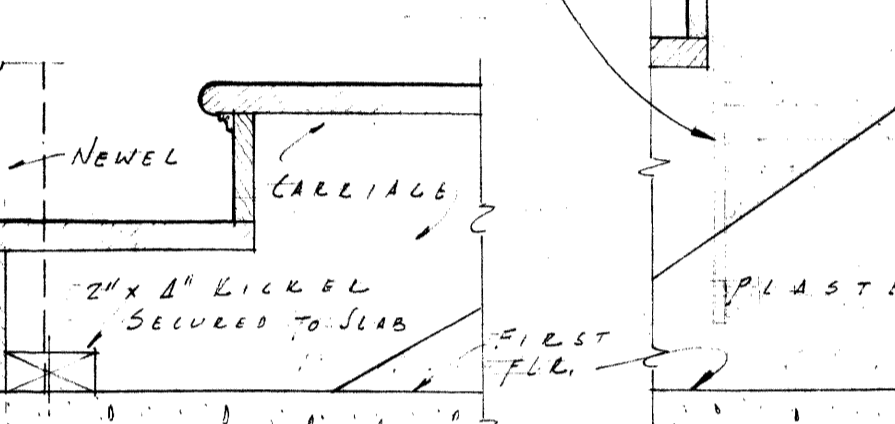
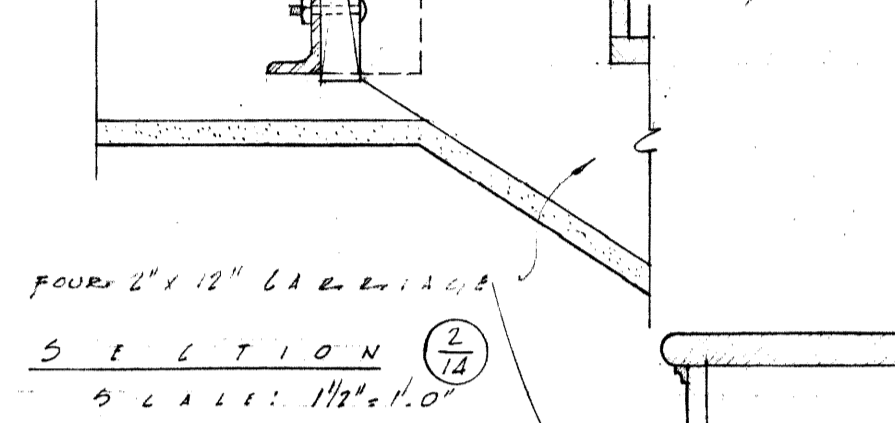
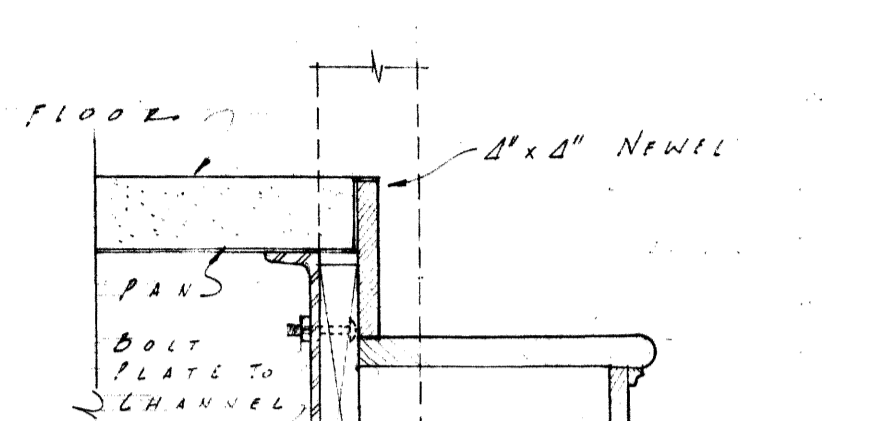
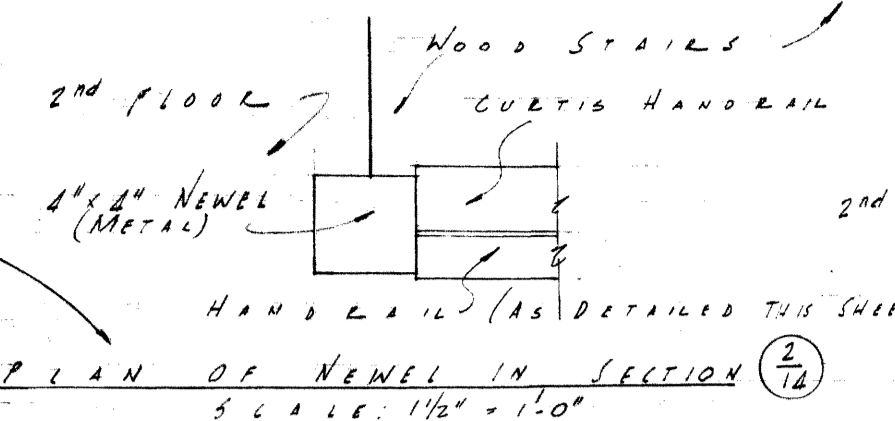
STAIR DIAGRAM No. 2
SCALE: 1/4" = 1'-0"



ELEVATION 2ND FLOOR NEWEL
STAIR No. 1
SCALE: 1/4" = 1'-0"



STAIR DIAGRAM No. 1
SCALE: 1/4" = 1'-0"



ELEVATION MAIN STAIRS
SCALE: 1/4" = 1'-0"



HOUSE No. 4 Type No. 1

SORORITY HOUSES FOR UNIVERSITY OF KENTUCKY	
COMMONWEALTH OF KENTUCKY DEPARTMENT OF FINANCE FRANKFORT, - - KENTUCKY	JOHN T. GILLIG, ARCHITECT ROBERT E. RADER, JR., DESIGNER, ASSOCIATED 180 WALNUT STREET LEXINGTON, KENTUCKY
APPROVALS <i>[Signature]</i> 9-12-56 DATE	REVISIONS DATE SEP 11 1956 DRAWN BY R.R. SC CHECKED BY J.C.
APPROVALS <i>[Signature]</i> 9-17-56 DATE	14