

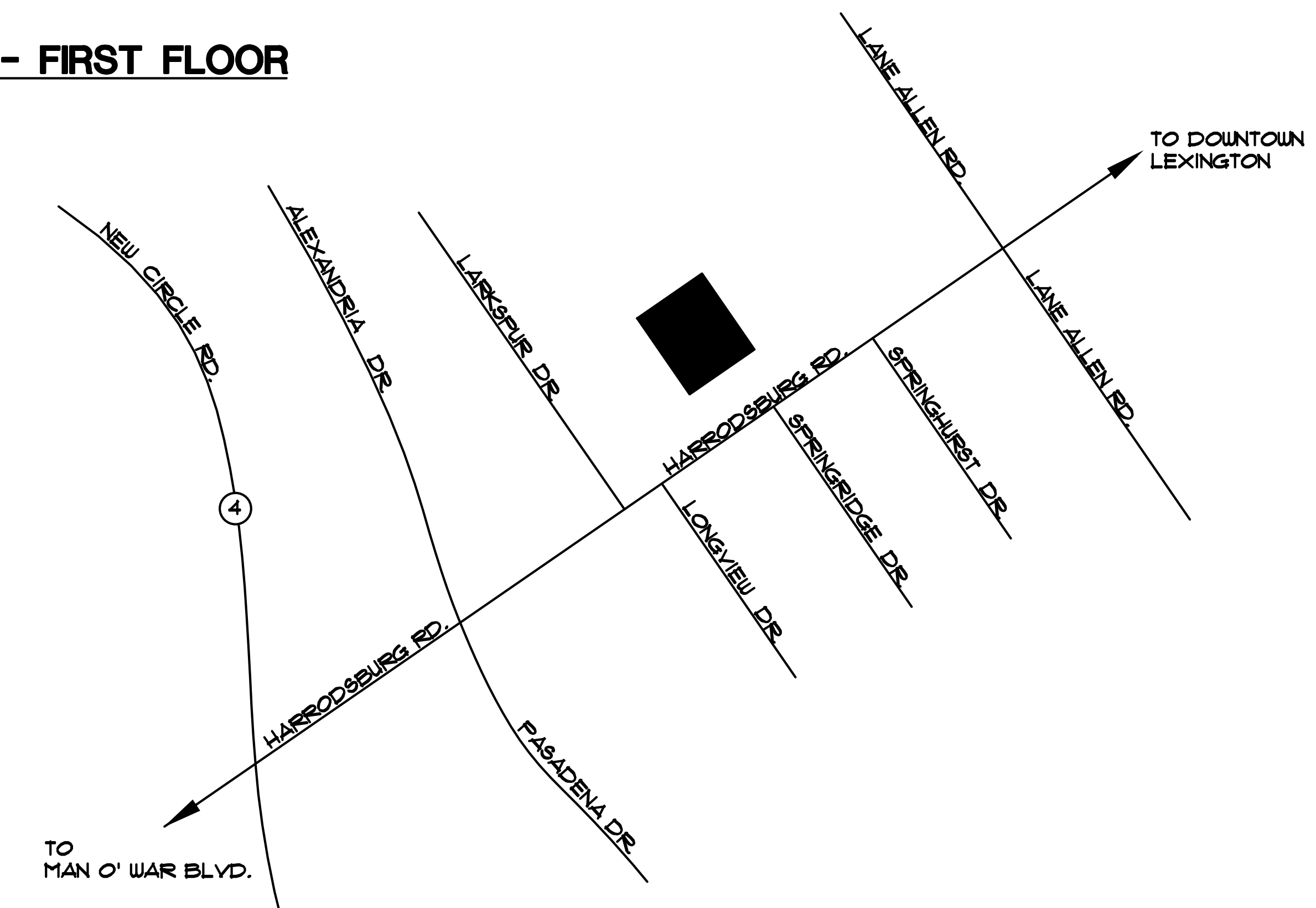


EXISTING 8" SANITARY SEWER PIPING
 EG.C.O.
 EXISTING SANITARY SEWER MANHOLE

SEE SHEET P-30, P-31 & P-32 FOR PLUMBING WORK THIS AREA.

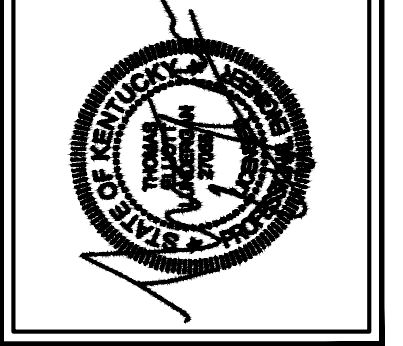
MASTER PLUMBING PLAN & SITE UTILITIES - FIRST FLOOR
 SCALE 1/8"=1'-0"

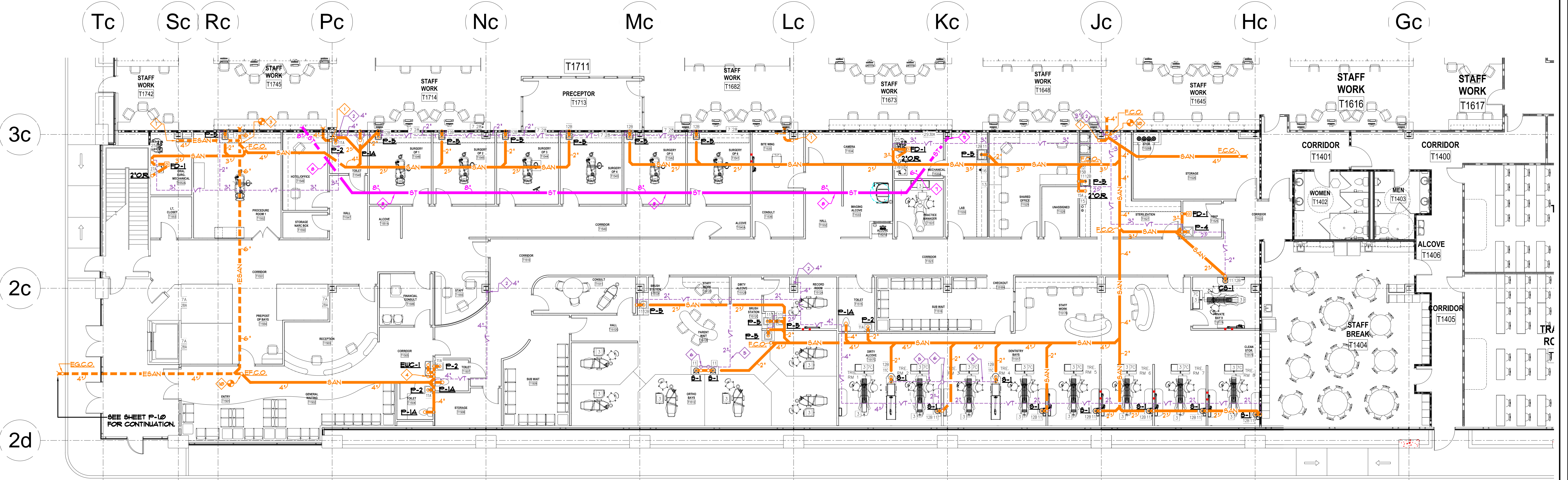
PLUMBING LEGEND	
EG.C.O.	EXISTING GRADE CLEANOUT
-----ESAN-----	EXISTING SANITARY SEWER PIPING



VICINITY MAP
 NOT TO SCALE

DATE	DESCRIPTION





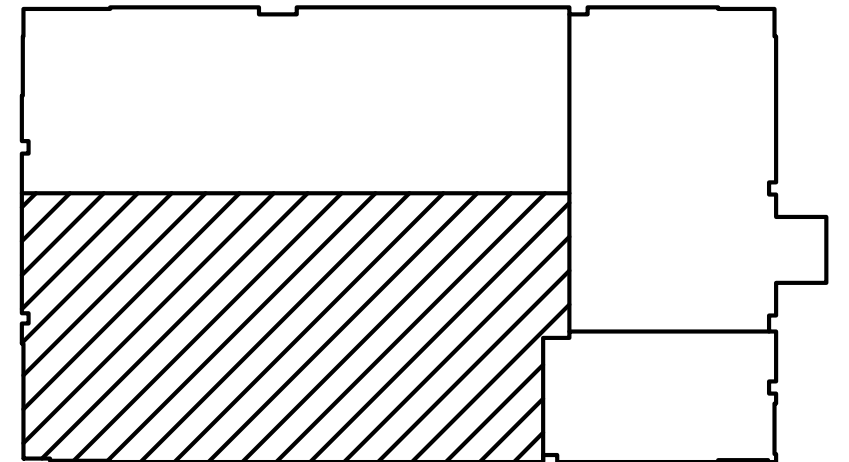
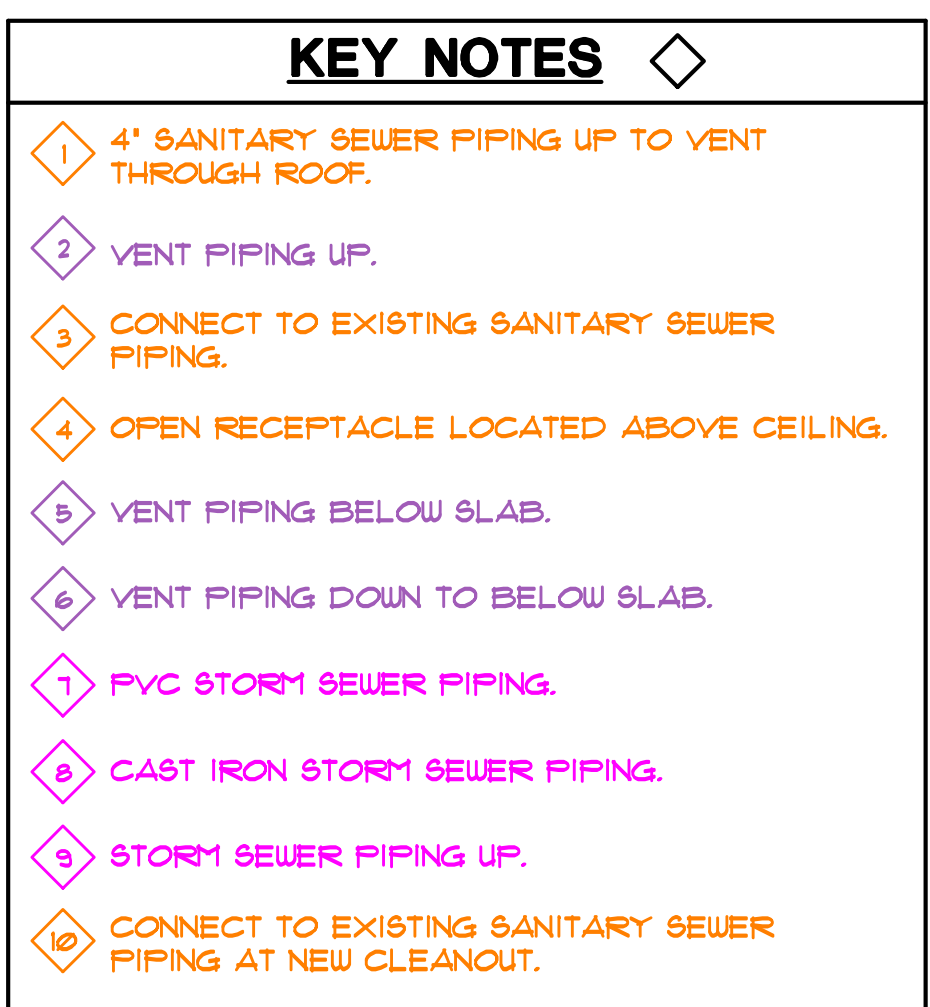
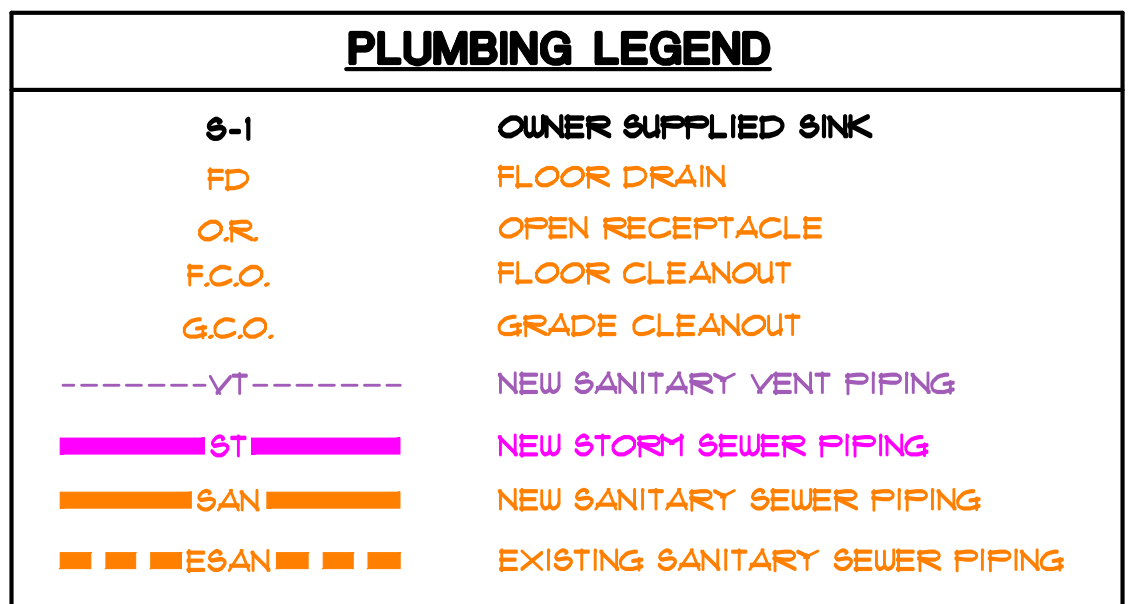
ENLARGED PLUMBING PLAN - FIRST FLOOR
SCALE 1/8"=1'-0"

PLUMBING SPECIFICATIONS

QUANTITY	SPEC. NUMBER	DESCRIPTION	COLD WATER	HOT WATER	AIR	NATURAL GAS	NITROGEN	OXYGEN	VENT	MECH. DETAIL	CONS. DETAIL
9	3	REAR CABINET UTILITY CENTER - CONTRACTOR TO PROVIDE REQ'D UTILITIES. BACK FLOW PREVENTION REQUIRED AS PER LOCAL CODE.	•	•	•	•	•	•	•	•	3
1	3	REAR CABINET UTILITY CENTER - CONTRACTOR TO PROVIDE REQ'D UTILITIES. BACK FLOW PREVENTION REQUIRED AS PER LOCAL CODE.	•	•	•	•	•	•	•	•	3
6	3	ORTHO CART UTILITY CENTER - CONTRACTOR TO PROVIDE REQ'D UTILITIES. BACK FLOW PREVENTION REQUIRED AS PER LOCAL CODE.	•	•	•	•	•	•	•	•	3
9	3	DENTAL CHAIR UTILITY CENTER - CONTRACTOR TO PROVIDE REQ'D UTILITIES. BACK FLOW PREVENTION REQUIRED AS PER LOCAL CODE.	•	•	•	•	•	•	•	•	3
7	7	N2-O2 AND VACUUM OUTLET STATION - CONTRACTOR (MED GAS CERTIFIED WHERE REQUIRED BY CODE) TO PROVIDE REQ'D UTILITIES. OUTLET STATION PROVIDED BY HENRY SCHEIN DENTAL, INSTALLED BY CONTRACTOR (WHEN REQUIRED). SILVER SOLDERED TO TYPE K OR L COPPER LINES, 3/8" OD NITROUS AND 1/2" OD OXYGEN COMING FROM THE SYSTEM MANIFOLD. 1/2" VACUUM BRANCH FROM MAIN VACUUM TRUNK LINE. SEE HENRY SCHEIN DENTAL EQUIPMENT SPECIALIST FOR EXACT LOCATIONS. FOLLOW NFPA CODES.	•	•	•	•	•	•	•	•	7A
3	7A	OXYGEN OUTLET - CONTRACTOR (MED GAS CERTIFIED WHERE REQUIRED BY CODE) TO PROVIDE REQ'D UTILITIES. OUTLET SUPPLIED BY HENRY SCHEIN DENTAL, INSTALLED BY CONTRACTOR. SILVER SOLDERED TO 1/2" O.D. TYPE K OR L COPPER LINES COMING FROM THE SYSTEM MANIFOLD. SEE HENRY SCHEIN DENTAL EQUIPMENT SPECIALIST FOR EXACT LOCATIONS. FOLLOW NFPA CODES.	•	•	•	•	•	•	•	•	7A
9	7C	N2-O2 SYSTEM WITH D.I.S.S. TERMINATIONS - CONTRACTOR (MED GAS CERTIFIED WHERE REQUIRED BY CODE) TO PROVIDE REQ'D UTILITIES. SILVER SOLDERED TYPE K OR L COPPER LINES, 3/8" OD NITROUS AND 1/2" OD OXYGEN COMING FROM THE SYSTEM MANIFOLD. TERMINATE WITH D.I.S.S. FITTINGS AT FINISHED FLOOR OR WALL. SEE UTILITY CENTER DETAIL FOR VACUUM LOCATION. PLUMBER TO REQUEST VALVES FROM HENRY SCHEIN REP FOR INSTALLATION. FOLLOW NFPA CODES.	•	•	•	•	•	•	•	•	7C
17	11	MODULAR SINKS & FAUCETS - CONTRACTOR TO PROVIDE REQ'D UTILITIES. SINK AND FAUCET SUPPLIED AND INSTALLED BY HENRY SCHEIN DENTAL.	•	•	•	•	•	•	•	•	11C
4	11A	STANDARD SINK & FAUCET - CONTRACTOR TO PROVIDE AND INSTALL REQ'D UTILITIES, SINK AND FAUCET. MANUFACTURER AND STYLE DETERMINED BY OWNER. FINAL CONNECTIONS BY CONTRACTOR.	•	•	•	•	•	•	•	•	11C
2	11C	CENTER ISLAND CABINET - CONTRACTOR TO PROVIDE REQ'D UTILITIES. CABINET SUPPLIED AND INSTALLED BY HENRY SCHEIN DENTAL. SINK AND FAUCET TO BE INSTALLED BY CONTRACTOR. FINAL CONNECTIONS BY CONTRACTOR.	•	•	•	•	•	•	•	•	11C
19	12B	TAP MASTER FAUCET CONTROL - FROM (12B) TO (11) OR (11A). SUPPLIED AND INSTALLED BY HENRY SCHEIN DENTAL.	•	•	•	•	•	•	•	•	12B
1	13	COMPRESSED AIR LINE AND VALVE - CONTRACTOR TO PROVIDE REQ'D UTILITIES. TERMINATE WITH A 3/8" COMPRESSION STOP.	•	•	•	•	•	•	•	•	13
1	15	ULTRASONIC CLEANER - CONTRACTOR TO PROVIDE REQ'D UTILITIES. CLEANER SUPPLIED AND INSTALLED BY HENRY SCHEIN DENTAL.	•	•	•	•	•	•	•	•	15
1	15A	INSTRUMENT WASHER (HYDRIM) - CONTRACTOR TO PROVIDE REQ'D UTILITIES. WASHER SUPPLIED AND INSTALLED BY HENRY SCHEIN DENTAL.	•	•	•	•	•	•	•	•	15A
2	15B	HANDPIECE MAINTENANCE SYSTEM - CONTRACTOR TO PROVIDE REQ'D UTILITIES. 1/2" AIR LINE WITH VALVE STOP (58-145 PSI) ABOVE COUNTERTOP. SYSTEM SUPPLIED AND INSTALLED BY HENRY SCHEIN DENTAL.	•	•	•	•	•	•	•	•	15B
1	16	MODEL TRIMMER - CONTRACTOR TO PROVIDE REQ'D UTILITIES. MODEL TRIMMER SUPPLIED AND INSTALLED BY HENRY SCHEIN DENTAL. BACK FLOW PREVENTION REQUIRED AS PER LOCAL CODE.	•	•	•	•	•	•	•	•	16
1	17	PLASTER TRAP - SUPPLIED BY HENRY SCHEIN DENTAL, INSTALLED BY CONTRACTOR ON SINK DRAIN LINE.	•	•	•	•	•	•	•	•	16

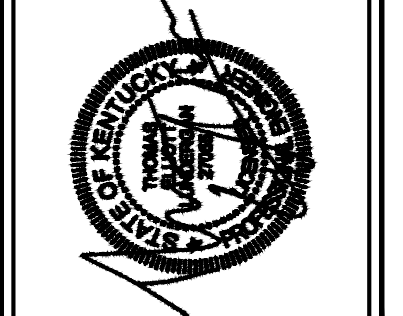
PLUMBING SPECIFICATIONS

QUANTITY	SPEC. NUMBER	DESCRIPTION	COLD WATER	HOT WATER	AIR	NATURAL GAS	NITROGEN	OXYGEN	VENT	MECH. DETAIL	CONS. DETAIL
2	25	DENTAL AIR COMPRESSOR - FOR GAS-DRIVEN DEVICES IN A LEVEL 3 FACILITY. CONTRACTOR TO PROVIDE REQ'D UTILITIES AND FRESH-AIR INTAKE VENT. 1/2" I.D. COPPER TYPE K OR L SUPPLY LINES TO LOCATIONS THAT REQUIRE AIR. BUCK BOOST TRANSFORMER SUPPLIED AND INSTALLED BY CONTRACTOR (IF REQ'D). FINAL CONNECTIONS BY CONTRACTOR. REFER TO NFPA 99, 2005, FOR EXACT CONNECTIONS. CONTRACTOR TO PROVIDE REQ'D UTILITIES.	•	•	•	•	•	•	•	•	25
1	27A	PVC MAIN TRUNK LINES (WHERE PERMITTED BY CODE), TRUNK, REDUCTION AND BRANCH LINE SIZES PER MFR RECOMMENDATIONS. EXHAUST PUMP TO OUTSIDE. BACK FLOW PREVENTION REQ'D PER LOCAL CODE. COLLECTION CANISTER (CAS) SUPPLIED BY HENRY SCHEIN DENTAL, INSTALLED BY CONTRACTOR. BUCK BOOST TRANSFORMER SUPPLIED AND INSTALLED BY CONTRACTOR (IF REQ'D). FINAL CONNECTIONS BY CONTRACTOR. PROVIDE WATER LINE WITH HOSE BIB.	•	•	•	•	•	•	•	•	27A
1	27B	PVC MAIN TRUNK LINES (WHERE PERMITTED BY CODE), TRUNK, REDUCTION AND BRANCH LINE SIZES PER MFR RECOMMENDATIONS. EXHAUST PUMP TO OUTSIDE. BACK FLOW PREVENTION REQ'D PER LOCAL CODE. COLLECTION CANISTER (CAS) SUPPLIED BY HENRY SCHEIN DENTAL, INSTALLED BY CONTRACTOR. BUCK BOOST TRANSFORMER SUPPLIED AND INSTALLED BY CONTRACTOR (IF REQ'D). FINAL CONNECTIONS BY CONTRACTOR. PROVIDE WATER LINE WITH HOSE BIB.	•	•	•	•	•	•	•	•	27B
7	28	VACUUM INLET - CONTRACTOR TO PROVIDE A 1/2" PVC BRANCH WITH TERMINATION FITTING FROM MAIN TRUNK LINE. VERIFY HEIGHT AND LOCATION WITH HENRY SCHEIN DENTAL EQUIPMENT SPECIALIST. COLLECTION CONTAINERS SUPPLIED BY HENRY SCHEIN DENTAL. CONTRACTOR TO PROVIDE 1/2" COPPER LINE (OR PER MFR SPECS) WITH TERMINATION FITTING FROM SURGICAL VACUUM (27C). VERIFY HEIGHT AND LOCATION WITH HENRY SCHEIN DENTAL EQUIPMENT SPECIALIST.	•	•	•	•	•	•	•	•	28
3	28A	WATER SOLENOID W/FILTER - CONTRACTOR TO PROVIDE REQ'D UTILITIES. SOLENOID SUPPLIED BY HENRY SCHEIN DENTAL, INSTALLED BY CONTRACTOR ON COLD WATER SUPPLY LINE TO THE OFFICE.	•	•	•	•	•	•	•	•	28A
1	29	WATER SEPARATOR - SUPPLIED AND INSTALLED BY CONTRACTOR. VENT TO OUTSIDE.	•	•	•	•	•	•	•	•	29
1	30A	WATER SOLENOID W/FILTER - CONTRACTOR TO PROVIDE REQ'D UTILITIES. SOLENOID SUPPLIED BY HENRY SCHEIN DENTAL, INSTALLED BY CONTRACTOR ON COLD WATER SUPPLY LINE TO THE OFFICE.	•	•	•	•	•	•	•	•	30A
1	33	SILVER SOLDERED K OR L COPPER TRUNK LINES RUNNING TO EACH TREATMENT ROOM. CONTRACTOR TO PRESSURE TEST LINES SEPARATELY WITH DRY NITROGEN AT 150 PSI FOR 24 HOURS - FOLLOW NFPA CODES.	•	•	•	•	•	•	•	•	33



KEY PLAN

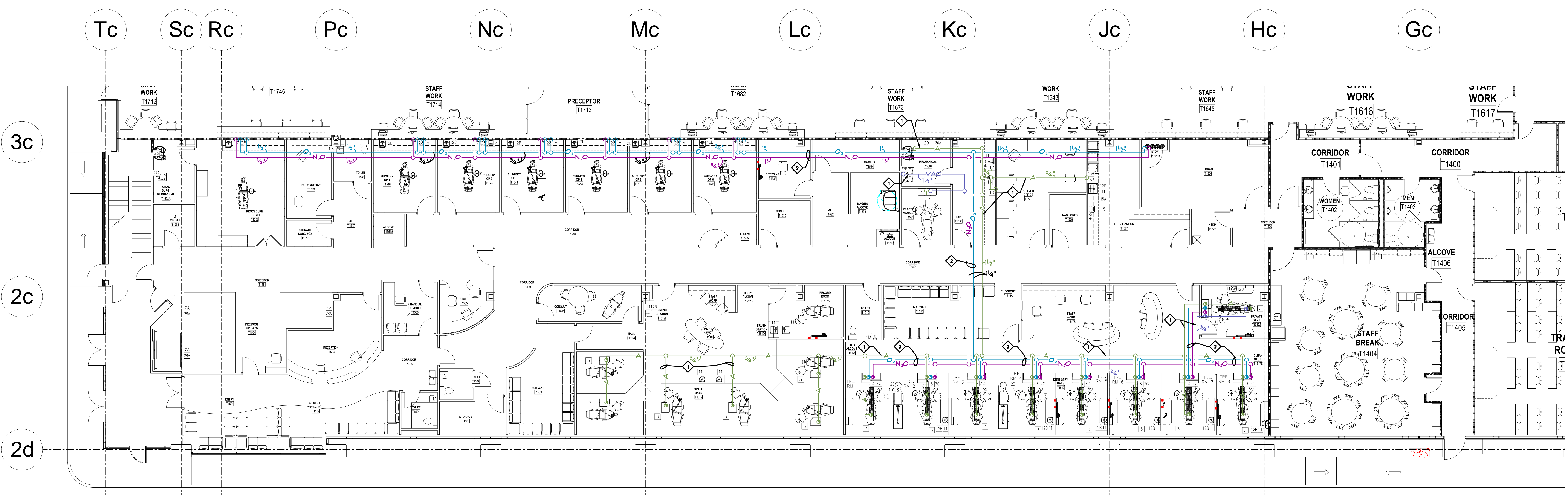
DATE DESCRIPTION



BristolGroup
ENGINEERING | CONSTRUCTION

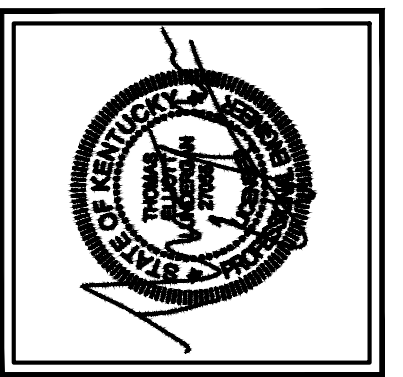
UK HEALTHCARE - DENTAL AREA
TURFLAND CLINIC
LEXINGTON, KENTUCKY

ENLARGED PLUMBING PLAN - FIRST FLOOR



ENLARGED MEDICAL GAS PIPING PLAN - FIRST FLOOR
SCALE 1/8"=1'-0"

OWNER'S RECORD DOCUMENT
DATE: 08/18/2015
DRAWN: [Name]
CHECKED: [Name]
DATE: [Date] DESCRIPTION: [Description]



QUANTITY		SPEC. NUMBER	DESCRIPTION	UTILITIES					MECH. DETAIL	CONS. DETAIL
				COLD WATER	HOT WATER	DRAIN	NATURAL GAS	VACUUM		
9	3		REAR CABINET UTILITY CENTER - CONTRACTOR TO PROVIDE REQ'D UTILITIES. BACK FLOW PREVENTION REQUIRED AS PER LOCAL CODE.	*	*	*	*			3
1	3		REAR CABINET UTILITY CENTER - CONTRACTOR TO PROVIDE REQ'D UTILITIES. BACK FLOW PREVENTION REQUIRED AS PER LOCAL CODE.	*	*	*	*			3
6	3		ORTHO CART UTILITY CENTER - CONTRACTOR TO PROVIDE REQ'D UTILITIES. BACK FLOW PREVENTION REQUIRED AS PER LOCAL CODE.	*	*	*	*			3
9	3		DENTAL CHAIR UTILITY CENTER - CONTRACTOR TO PROVIDE REQ'D UTILITIES. BACK FLOW PREVENTION REQUIRED AS PER LOCAL CODE.	*	*	*	*			3
7	7		DENTAL EQUIPMENT SPECIALIST EXACT LOCATIONS. FOLLOW NFPA CODES. OXYGEN OUTLET - CONTRACTOR (MED GAS CERTIFIED WHERE REQUIRED BY CODE) TO PROVIDE REQ'D UTILITIES. OUTLET STATION PROVIDED BY HENRY SCHEIN DENTAL, INSTALLED BY CONTRACTOR (WHEN REQUIRED). SILVER SOLDERED TO TYPE K OR L COPPER LINES, 3/8" OD NITROUS AND 1/2" OD OXYGEN COMING FROM THE SYSTEM MANIFOLD, 1/2" VACUUM BRANCH FROM MAIN VACUUM TRUNK LINE. SEE HENRY SCHEIN DENTAL EQUIPMENT SPECIALIST FOR EXACT LOCATIONS. FOLLOW NFPA CODES.	*	*	*	*			7
3	7A		DENTAL, INSTALLED BY CONTRACTOR. SILVER SOLDERED TO 1/2" O.D. TYPE K OR L COPPER LINES COMING FROM THE SYSTEM MANIFOLD. SEE HENRY SCHEIN DENTAL EQUIPMENT SPECIALIST EXACT LOCATIONS. FOLLOW NFPA CODES. N2O O2 SYSTEM WITH D.I.S.S. TERMINATIONS - CONTRACTOR (MED GAS CERTIFIED WHERE REQUIRED BY CODE) TO PROVIDE REQ'D UTILITIES. SILVER SOLDERED TYPE K OR L COPPER LINES, 3/8" OD NITROUS AND 1/2" OD OXYGEN COMING FROM THE SYSTEM MANIFOLD, TERMINATE WITH D.I.S.S. FITTINGS AT FINISHED FLOOR OR WALL. SEE UTILITY CENTER DETAIL FOR VACUUM LOCATION. PLUMBER TO REQUEST VALVES FROM HENRY SCHEIN REP FOR INSTALLATION.	*	*	*	*			7A
9	7C		STANDARD SINK & FAUCETS - CONTRACTOR TO PROVIDE REQ'D UTILITIES. SINK AND FAUCET SUPPLIED AND INSTALLED BY HENRY SCHEIN DENTAL.	*	*	*	*			7C
17	11		STANDARD SINK & FAUCET - CONTRACTOR TO PROVIDE AND INSTALL REQ'D UTILITIES, SINK AND FAUCET, MANUFACTURER AND STYLE DETERMINED BY OWNER. FINAL CONNECTIONS BY CONTRACTOR.	*	*	*	*			11
4	11A		CENTER ISLAND CABINET - CONTRACTOR TO PROVIDE REQ'D UTILITIES. CABINET SUPPLIED AND INSTALLED BY HENRY SCHEIN DENTAL. SINK AND FAUCET TO BE INSTALLED BY CONTRACTOR. FINAL CONNECTIONS BY CONTRACTOR.	*	*	*	*			11A
2	11C		TAP MASTER FAUCET CONTROL - FROM (12B) TO (11) OR (11A). SUPPLIED AND INSTALLED BY HENRY SCHEIN DENTAL.	*	*	*	*			11C
19	12B		COMPRESSED AIR LINE AND VALVE - CONTRACTOR TO PROVIDE REQ'D UTILITIES. TERMINATE WITH A 3/8" COMPRESSION STOP.	*	*	*	*			12B
1	13		ULTRASONIC CLEANER - CONTRACTOR TO PROVIDE REQ'D UTILITIES. CLEANER SUPPLIED AND INSTALLED BY HENRY SCHEIN DENTAL.	*	*	*	*			13
1	15		INSTRUMENT WASHER (HYDRIM) - CONTRACTOR TO PROVIDE REQ'D UTILITIES. WASHER SUPPLIED AND INSTALLED BY HENRY SCHEIN DENTAL.	*	*	*	*			15
1	15A		HANDPIECE MAINTENANCE SYSTEM - CONTRACTOR TO PROVIDE REQ'D UTILITIES. 1/2" AIR LINE WITH VALVE STOP (58-145 PSI) ABOVE COUNTERTOP. SYSTEM SUPPLIED AND INSTALLED BY HENRY SCHEIN DENTAL.	*	*	*	*			15A
2	15B		MODEL TRIMMER TO UTILITIES. MODEL TRIMMER SUPPLIED AND INSTALLED BY HENRY SCHEIN DENTAL. BACK FLOW PREVENTION REQUIRED AS PER LOCAL CODE.	*	*	*	*			15B
1	16		REAR CABINET UTILITY CENTER - CONTRACTOR TO PROVIDE REQ'D UTILITIES. BACK FLOW PREVENTION REQUIRED AS PER LOCAL CODE.	*	*	*	*			16
1	17		REAR CABINET UTILITY CENTER - CONTRACTOR TO PROVIDE REQ'D UTILITIES. BACK FLOW PREVENTION REQUIRED AS PER LOCAL CODE.	*	*	*	*			17

QUANTITY		SPEC. NUMBER	DESCRIPTION	UTILITIES					MECH. DETAIL	CONS. DETAIL
				COLD WATER	HOT WATER	DRAIN	NATURAL GAS	VACUUM		
2	25		DENTAL AIR COMPRESSOR - FOR GAS-DRIVEN DEVICES IN A LEVEL 3 FACILITY. CONTRACTOR TO PROVIDE REQ'D UTILITIES AND FRESH-AIR INTAKE VENT, 1/2" I.D. COPPER TYPE K OR L SUPPLY LINES TO LOCATIONS THAT REQUIRE AIR. BUCK BOOST TRANSFORMER SUPPLIED AND INSTALLED BY CONTRACTOR (IF REQ'D). FINAL CONNECTIONS BY CONTRACTOR. REFER TO NFPA 99, 2005. FOLLOW NFPA CODES. EXHAUST PUMP TO OUTSIDE. EXHAUST PUMP (DRY) - CONTRACTOR TO PROVIDE REQ'D UTILITIES. SCH 40 PVC MAIN TRUNK LINES (WHERE PERMITTED BY CODE). TRUNK, REDUCTION AND BRANCH LINE SIZES PER MFR RECOMMENDATIONS. EXHAUST PUMP TO OUTSIDE. BACK FLOW PREVENTION REQ'D PER LOCAL CODE. COLLECTION CANISTER (CAS) SUPPLIED BY HENRY SCHEIN DENTAL, INSTALLED BY CONTRACTOR. BUCK BOOST TRANSFORMER SUPPLIED AND INSTALLED BY CONTRACTOR (IF REQ'D). FINAL CONNECTIONS BY CONTRACTOR. PROVIDE WATER LINE WITH HOSE BIB	*	*	*	*			25
1	27A		WATER PUMP (DRY) - CONTRACTOR TO PROVIDE REQ'D UTILITIES. SCH 40 PVC MAIN TRUNK LINES (WHERE PERMITTED BY CODE). TRUNK, REDUCTION AND BRANCH LINE SIZES PER MFR RECOMMENDATIONS. EXHAUST PUMP TO OUTSIDE. BACK FLOW PREVENTION REQ'D PER LOCAL CODE. COLLECTION CANISTER (CAS) SUPPLIED BY HENRY SCHEIN DENTAL, INSTALLED BY CONTRACTOR. BUCK BOOST TRANSFORMER SUPPLIED AND INSTALLED BY CONTRACTOR (IF REQ'D). FINAL CONNECTIONS BY CONTRACTOR. PROVIDE WATER LINE WITH HOSE BIB	*	*	*	*			27A
1	27B		WATER PUMP (DRY) - CONTRACTOR TO PROVIDE REQ'D UTILITIES. SCH 40 PVC MAIN TRUNK LINES (WHERE PERMITTED BY CODE). TRUNK, REDUCTION AND BRANCH LINE SIZES PER MFR RECOMMENDATIONS. EXHAUST PUMP TO OUTSIDE. BACK FLOW PREVENTION REQ'D PER LOCAL CODE. COLLECTION CANISTER (CAS) SUPPLIED BY HENRY SCHEIN DENTAL, INSTALLED BY CONTRACTOR. BUCK BOOST TRANSFORMER SUPPLIED AND INSTALLED BY CONTRACTOR (IF REQ'D). FINAL CONNECTIONS BY CONTRACTOR. PROVIDE WATER LINE WITH HOSE BIB	*	*	*	*			27B
7	28		WATER PUMP (DRY) - CONTRACTOR TO PROVIDE REQ'D UTILITIES. SCH 40 PVC MAIN TRUNK LINES (WHERE PERMITTED BY CODE). TRUNK, REDUCTION AND BRANCH LINE SIZES PER MFR RECOMMENDATIONS. EXHAUST PUMP TO OUTSIDE. BACK FLOW PREVENTION REQ'D PER LOCAL CODE. COLLECTION CANISTER (CAS) SUPPLIED BY HENRY SCHEIN DENTAL, INSTALLED BY CONTRACTOR. BUCK BOOST TRANSFORMER SUPPLIED AND INSTALLED BY CONTRACTOR (IF REQ'D). FINAL CONNECTIONS BY CONTRACTOR. PROVIDE WATER LINE WITH HOSE BIB	*	*	*	*			28
3	28A		WATER PUMP (DRY) - CONTRACTOR TO PROVIDE REQ'D UTILITIES. SCH 40 PVC MAIN TRUNK LINES (WHERE PERMITTED BY CODE). TRUNK, REDUCTION AND BRANCH LINE SIZES PER MFR RECOMMENDATIONS. EXHAUST PUMP TO OUTSIDE. BACK FLOW PREVENTION REQ'D PER LOCAL CODE. COLLECTION CANISTER (CAS) SUPPLIED BY HENRY SCHEIN DENTAL, INSTALLED BY CONTRACTOR. BUCK BOOST TRANSFORMER SUPPLIED AND INSTALLED BY CONTRACTOR (IF REQ'D). FINAL CONNECTIONS BY CONTRACTOR. PROVIDE WATER LINE WITH HOSE BIB	*	*	*	*			28A
1	29		WATER PUMP (DRY) - CONTRACTOR TO PROVIDE REQ'D UTILITIES. SCH 40 PVC MAIN TRUNK LINES (WHERE PERMITTED BY CODE). TRUNK, REDUCTION AND BRANCH LINE SIZES PER MFR RECOMMENDATIONS. EXHAUST PUMP TO OUTSIDE. BACK FLOW PREVENTION REQ'D PER LOCAL CODE. COLLECTION CANISTER (CAS) SUPPLIED BY HENRY SCHEIN DENTAL, INSTALLED BY CONTRACTOR. BUCK BOOST TRANSFORMER SUPPLIED AND INSTALLED BY CONTRACTOR (IF REQ'D). FINAL CONNECTIONS BY CONTRACTOR. PROVIDE WATER LINE WITH HOSE BIB	*	*	*	*			29
1	30A		WATER PUMP (DRY) - CONTRACTOR TO PROVIDE REQ'D UTILITIES. SCH 40 PVC MAIN TRUNK LINES (WHERE PERMITTED BY CODE). TRUNK, REDUCTION AND BRANCH LINE SIZES PER MFR RECOMMENDATIONS. EXHAUST PUMP TO OUTSIDE. BACK FLOW PREVENTION REQ'D PER LOCAL CODE. COLLECTION CANISTER (CAS) SUPPLIED BY HENRY SCHEIN DENTAL, INSTALLED BY CONTRACTOR. BUCK BOOST TRANSFORMER SUPPLIED AND INSTALLED BY CONTRACTOR (IF REQ'D). FINAL CONNECTIONS BY CONTRACTOR. PROVIDE WATER LINE WITH HOSE BIB	*	*	*	*			30A
1	33		WATER PUMP (DRY) - CONTRACTOR TO PROVIDE REQ'D UTILITIES. SCH 40 PVC MAIN TRUNK LINES (WHERE PERMITTED BY CODE). TRUNK, REDUCTION AND BRANCH LINE SIZES PER MFR RECOMMENDATIONS. EXHAUST PUMP TO OUTSIDE. BACK FLOW PREVENTION REQ'D PER LOCAL CODE. COLLECTION CANISTER (CAS) SUPPLIED BY HENRY SCHEIN DENTAL, INSTALLED BY CONTRACTOR. BUCK BOOST TRANSFORMER SUPPLIED AND INSTALLED BY CONTRACTOR (IF REQ'D). FINAL CONNECTIONS BY CONTRACTOR. PROVIDE WATER LINE WITH HOSE BIB	*	*	*	*			33

KEY NOTES ◆

◆ PIPING RUN BELOW SLAB.

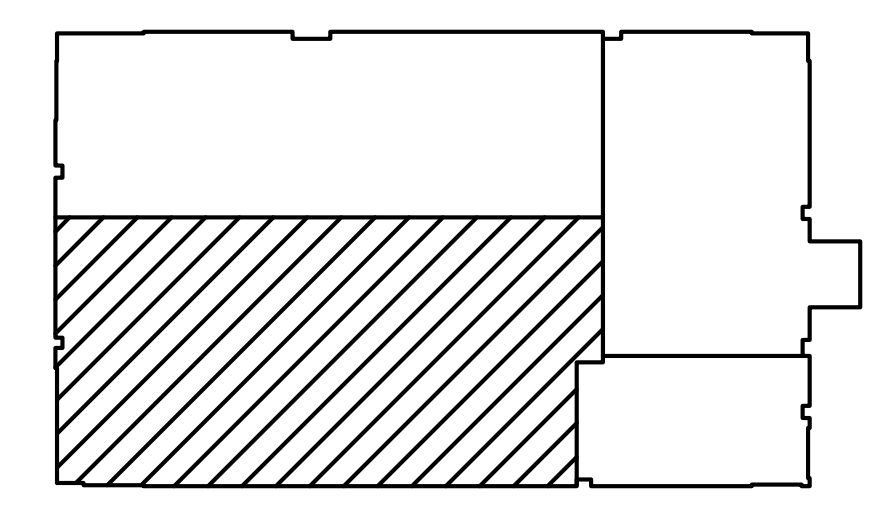
◆ PIPING RUN ABOVE CEILING.

MEDICAL GAS PIPING LEGEND

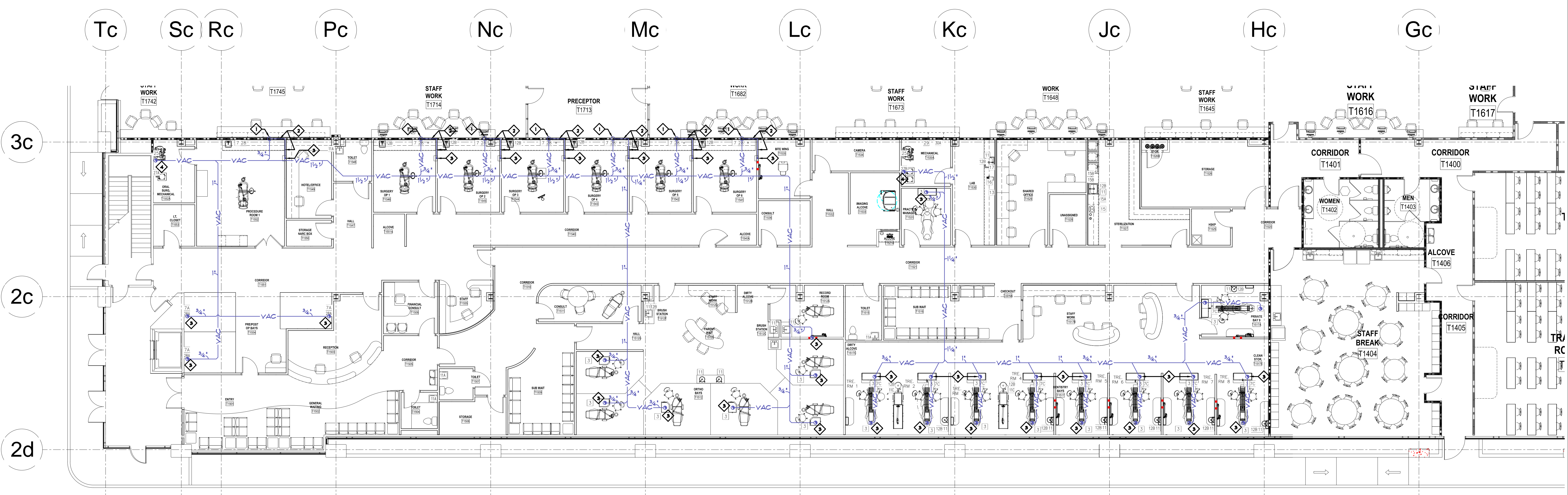
— A — COMPRESSED AIR PIPING

— O₂ — OXYGEN PIPING

— N₂O — N₂O PIPING

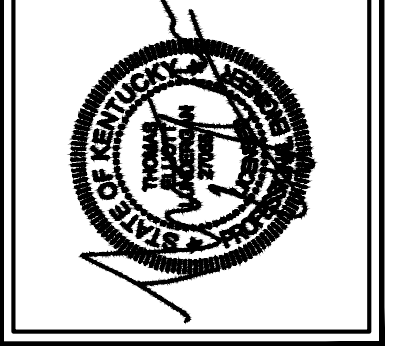


KEY PLAN



ENLARGED VACUUM PIPING PLAN - FIRST FLOOR
SCALE 1/8"=1'-0"

OWNER'S RECORD DOCUMENT	DATE	DESCRIPTION
OWNER'S PLANNING PERMIT		
OWNER'S DESIGN REVIEW		
DATE	DESCRIPTION	



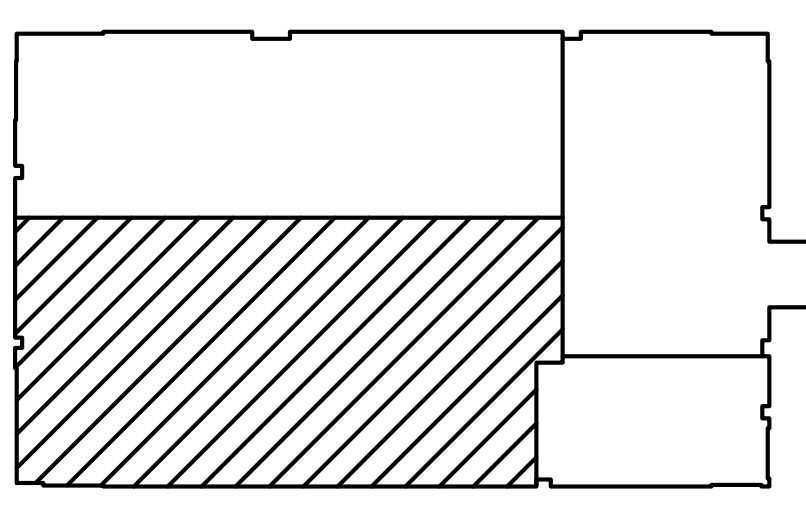
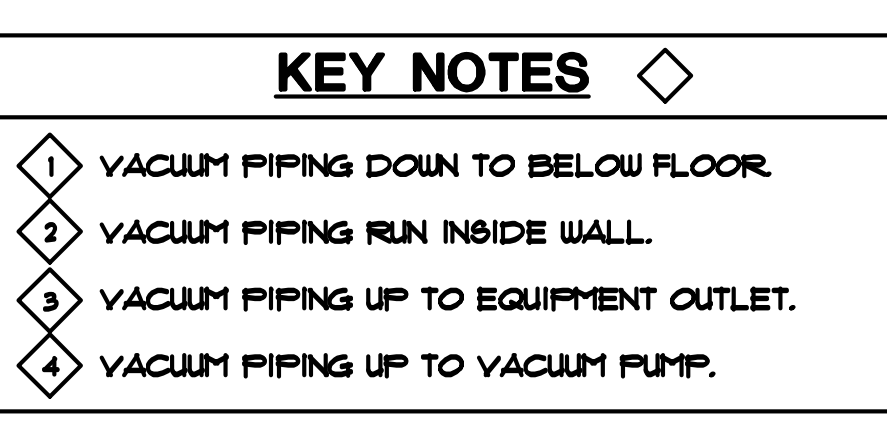
QUANTITY		SPEC. NUMBER	DESCRIPTION	UTILITIES					MECH. DETAIL	CONS. DETAIL
				COLD WATER	HOT WATER	AIR	NATURAL GAS	VACUUM		
9	3		REAR CABINET UTILITY CENTER - CONTRACTOR TO PROVIDE REQ'D UTILITIES. BACK FLOW PREVENTION REQUIRED AS PER LOCAL CODE.	*						3
1	3		REAR CABINET UTILITY CENTER - CONTRACTOR TO PROVIDE REQ'D UTILITIES. BACK FLOW PREVENTION REQUIRED AS PER LOCAL CODE.	*						3
6	3		ORTHIO CART UTILITY CENTER - CONTRACTOR TO PROVIDE REQ'D UTILITIES. BACK FLOW PREVENTION REQUIRED AS PER LOCAL CODE.	*						3
9	3		DENTAL CHAIR UTILITY CENTER - CONTRACTOR TO PROVIDE REQ'D UTILITIES. BACK FLOW PREVENTION REQUIRED AS PER LOCAL CODE.	*						3
7	7		DENTAL EQUIPMENT SPECIALIST FOR EACH DENTIST. FOLLOW NFPA CODES. OXYGEN OUTLET - CONTRACTOR (MED GAS CERTIFIED WHERE REQUIRED BY CODE) TO PROVIDE REQ'D UTILITIES. OUTLET STATION PROVIDED BY HENRY SCHEIN DENTAL, INSTALLED BY CONTRACTOR (WHEN REQUIRED). SILVER SOLDERED TO TYPE K OR L COPPER LINES, 3/8" OD NITROUS AND 1/2" OD OXYGEN COMING FROM THE SYSTEM MANIFOLD, 1/2" VACUUM BRANCH FROM MAIN VACUUM TRUNK LINE. SEE HENRY SCHEIN DENTAL EQUIPMENT SPECIALIST FOR EXACT LOCATIONS. FOLLOW NFPA CODES.				*			7
3	7A		DENTAL, INSTALLED BY CONTRACTOR. SILVER SOLDERED TO 1/2" O.D. TYPE K OR L COPPER LINES COMING FROM THE SYSTEM MANIFOLD. SEE HENRY SCHEIN DENTAL EQUIPMENT SPECIALIST EXACT LOCATIONS. FOLLOW NFPA CODES. N2/O2 SYSTEM WITH D.I.S.S. TERMINATIONS - CONTRACTOR (MED GAS CERTIFIED WHERE REQUIRED BY CODE) TO PROVIDE REQ'D UTILITIES. SILVER SOLDERED TYPE K OR L COPPER LINES, 3/8" OD NITROUS AND 1/2" OD OXYGEN COMING FROM THE SYSTEM MANIFOLD, TERMINATE WITH D.I.S.S. FITTINGS AT FINISHED FLOOR OR WALL. SEE UTILITY CENTER DETAIL FOR VACUUM LOCATION. PLUMBER TO REQUEST VALVES FROM HENRY SCHEIN REP FOR INSTALLATION.				*			7A
9	7C		MODULAR SINKS & FAUCETS - CONTRACTOR TO PROVIDE REQ'D UTILITIES. SINK AND FAUCET SUPPLIED AND INSTALLED BY HENRY SCHEIN DENTAL.	*	*	*				7C
4	11A		STANDARD SINK & FAUCET - CONTRACTOR TO PROVIDE AND INSTALL REQ'D UTILITIES, SINK AND FAUCET, MANUFACTURER AND STYLE DETERMINED BY OWNER. FINAL CONNECTIONS BY CONTRACTOR.	*	*	*				
2	11C		CENTER ISLAND CABINET - CONTRACTOR TO PROVIDE REQ'D UTILITIES. CABINET SUPPLIED AND INSTALLED BY HENRY SCHEIN DENTAL. SINK AND FAUCET TO BE INSTALLED BY CONTRACTOR. FINAL CONNECTIONS BY CONTRACTOR.	*	*	*				11C
19	12B		TAP MASTER FAUCET CONTROL - FROM (12B) TO (11) OR (11A). SUPPLIED AND INSTALLED BY HENRY SCHEIN DENTAL.							12B
1	13		COMPRESSED AIR LINE AND VALVE - CONTRACTOR TO PROVIDE REQ'D UTILITIES. TERMINATE WITH A 3/8" COMPRESSION STOP.			*				13
1	15		ULTRASONIC CLEANER - CONTRACTOR TO PROVIDE REQ'D UTILITIES. CLEANER SUPPLIED AND INSTALLED BY HENRY SCHEIN DENTAL.			*				15
1	15A		INSTRUMENT WASHER (HYDRIM) - CONTRACTOR TO PROVIDE REQ'D UTILITIES. WASHER SUPPLIED AND INSTALLED BY HENRY SCHEIN DENTAL.	*	*	*				15A
2	15B		HANDPIECE MAINTENANCE SYSTEM - CONTRACTOR TO PROVIDE REQ'D UTILITIES. 1/2" AIR LINE WITH VALVE STOP (58-145 PSI) ABOVE COUNTERTOP. SYSTEM SUPPLIED AND INSTALLED BY HENRY SCHEIN DENTAL.	*	*	*				15B
1	16		MODEL TRIMMER - CONTRACTOR TO PROVIDE REQ'D UTILITIES. MODEL TRIMMER SUPPLIED AND INSTALLED BY HENRY SCHEIN DENTAL. BACK FLOW PREVENTION REQUIRED AS PER LOCAL CODE.	*						16
1	17		REAR CABINET UTILITY CENTER - CONTRACTOR TO PROVIDE REQ'D UTILITIES. SINK AND FAUCET SUPPLIED BY HENRY SCHEIN DENTAL, INSTALLED BY CONTRACTOR ON SINK DRAIN LINE.	*						17

QUANTITY		SPEC. NUMBER	DESCRIPTION	UTILITIES					MECH. DETAIL	CONS. DETAIL
				COLD WATER	HOT WATER	AIR	NATURAL GAS	VACUUM		
2	25		DENTAL AIR COMPRESSOR - FOR GAS-DRIVEN DEVICES IN A LEVEL 3 FACILITY. CONTRACTOR TO PROVIDE REQ'D UTILITIES AND FRESH-AIR INTAKE VENT, 1/2" I.D. COPPER TYPE K OR L SUPPLY LINES TO LOCATIONS THAT REQUIRE AIR. BUCK BOOST TRANSFORMER SUPPLIED AND INSTALLED BY CONTRACTOR (IF REQ'D). FINAL CONNECTIONS BY CONTRACTOR. REFER TO NFPA 99, 2005. FOLLOW NFPA CODES. PROVIDE REQ'D UTILITIES - SCH 40 PVC MAIN TRUNK LINES (WHERE PERMITTED BY CODE). TRUNK, REDUCTION AND BRANCH LINE SIZES PER MFR RECOMMENDATIONS. EXHAUST PUMP TO OUTSIDE. BACK FLOW PREVENTION REQ'D PER LOCAL CODE. COLLECTION CANISTER (CAS) SUPPLIED BY HENRY SCHEIN DENTAL, INSTALLED BY CONTRACTOR. BUCK BOOST TRANSFORMER SUPPLIED AND INSTALLED BY CONTRACTOR (IF REQ'D). FINAL CONNECTIONS BY CONTRACTOR. PROVIDE WATER LINE WITH HOSE BIB				*			25
1	27A		VACUUM PUMP (DRY) - CONTRACTOR TO PROVIDE REQ'D UTILITIES - SCH 40 PVC MAIN TRUNK LINES (WHERE PERMITTED BY CODE). TRUNK, REDUCTION AND BRANCH LINE SIZES PER MFR RECOMMENDATIONS. EXHAUST PUMP TO OUTSIDE. BACK FLOW PREVENTION REQ'D PER LOCAL CODE. COLLECTION CANISTER (CAS) SUPPLIED BY HENRY SCHEIN DENTAL, INSTALLED BY CONTRACTOR. BUCK BOOST TRANSFORMER SUPPLIED AND INSTALLED BY CONTRACTOR (IF REQ'D). FINAL CONNECTIONS BY CONTRACTOR. PROVIDE WATER LINE WITH HOSE BIB				*			27A
1	27B		VACUUM PUMP (DRY) - CONTRACTOR TO PROVIDE REQ'D UTILITIES - SCH 40 PVC MAIN TRUNK LINES (WHERE PERMITTED BY CODE). TRUNK, REDUCTION AND BRANCH LINE SIZES PER MFR RECOMMENDATIONS. EXHAUST PUMP TO OUTSIDE. BACK FLOW PREVENTION REQ'D PER LOCAL CODE. COLLECTION CANISTER (CAS) SUPPLIED BY HENRY SCHEIN DENTAL, INSTALLED BY CONTRACTOR. BUCK BOOST TRANSFORMER SUPPLIED AND INSTALLED BY CONTRACTOR (IF REQ'D). FINAL CONNECTIONS BY CONTRACTOR. PROVIDE WATER LINE WITH HOSE BIB				*			27B
7	28		WATER SPLITTER - CONTRACTOR TO PROVIDE 1/2" PVC BRANCH WITH TERMINATION FITTING FROM MAIN TRUNK LINE. VERIFY HEIGHT AND LOCATION WITH HENRY SCHEIN DENTAL EQUIPMENT SPECIALIST. COLLECTION CONTAINERS SUPPLIED BY HENRY SCHEIN DENTAL, INSTALLED BY CONTRACTOR.				*			28
3	28A		WATER SPLITTER - CONTRACTOR TO PROVIDE 1/2" COPPER LINE (OR PER MFR SPECS) WITH TERMINATION FITTING FROM SURGICAL VACUUM (27C). VERIFY HEIGHT AND LOCATION WITH HENRY SCHEIN DENTAL EQUIPMENT SPECIALIST.				*			28A
1	29		SEPARATOR - SUPPLIED AND INSTALLED BY CONTRACTOR. VENT TO OUTSIDE.							
1	30A		WATER SPLITTER W/FILTER - CONTRACTOR TO PROVIDE REQ'D UTILITIES. SOLENOID SUPPLIED BY HENRY SCHEIN DENTAL, INSTALLED BY CONTRACTOR ON COLD WATER SUPPLY LINE TO THE OFFICE.	*						30A
1	33		N2/O2 SYSTEM MANIFOLD - CONTRACTOR TO PROVIDE REQ'D UTILITIES. MANIFOLD SUPPLIED BY HENRY SCHEIN DENTAL, INSTALLED BY CONTRACTOR. SILVER SOLDERED K OR L COPPER TRUNK LINES RUNNING TO EACH TREATMENT ROOM. CONTRACTOR TO PRESSURE TEST LINES SEPARATELY WITH DRY NITROGEN AT 160 PSI FOR 24 HOURS. FOLLOW NFPA CODES.				*			33



GENERAL NOTES

1) ALL VACUUM PIPING RUN BELOW SLAB UNLESS OTHERWISE INDICATED.



KEY PLAN

