

# REVISIONS AND ADDITIONS TO STEAM DISTRIBUTION SYSTEM

FOR  
UNIVERSITY OF KENTUCKY, LEXINGTON, KENTUCKY

PROCTOR - INGELS - CONSULTING ENGINEERS

## LEGEND

	NEW	EXISTING
STEAM SUPPLY		
STEAM RETURN		
PIPE ANCHOR		
PIPE GUIDE		
PIPE SUPPORT		
ELBOW (UP, DOWN, SIDE)		
TEE (UP, DOWN, SIDE)		
UNION		
REDUCER		
PRESSURE REDUCING VALVE		
GATE VALVE		
GLOBE VALVE		
CHECK VALVE		
SAFETY VALVE		
STRAINER		
DRAIN		
DRIP		
PRESSURE GAUGE		
PIPING TO BE REMOVED OR ABANDONED UNDER THIS CONTRACT		

## ABBREVIATIONS

HPS	HIGH PRESSURE STEAM
MPS	MEDIUM PRESSURE STEAM
LPS	LOW PRESSURE STEAM
HPR	HIGH PRESSURE RETURN
MPR	MEDIUM PRESSURE RETURN
LPR	LOW PRESSURE RETURN
PD	PUMP DISCHARGE
MH	MANHOLE
VT	VITRIFIED TILE
CI	CAST IRON
SV	SAFETY VALVE
SVV	SAFETY VALVE VENT
PRV	PRESSURE REDUCING VALVE
F&T	FLOAT AND THERMOSTATIC
FD	FLOOR DRAIN

## INDEX

SHEET NO.	CONTENTS
M-1	PLAN & PROFILE - LINE A - BARKER HALL M.H. TO FRAZEE HALL M.H.
M-2	PLAN & PROFILE - LINE B - FRAZEE HALL M.H. TO EUCLID AVE. M.H.
M-3	PLAN & PROFILE - LINE C - EUCLID AVE. M.H. TO ALUMNI GYMNASIUM
M-4	PLAN & PROFILE - LINE D - ANDERSON HALL M.H. TO SOUTH END OF MACHINE SHOP
M-5	MANHOLE DETAILS
M-6	MANHOLE DETAILS
M-7	INSTALLATION DETAILS
M-8	ANDERSON HALL PIPING DETAILS

THESE PLANS HAVE BEEN EXAMINED & APPROVAL IS HEREBY GIVEN BY THE AMERICAN GILSONITE COMPANY, CLEVELAND OHIO.

BY: *Harold E. Sawyer*

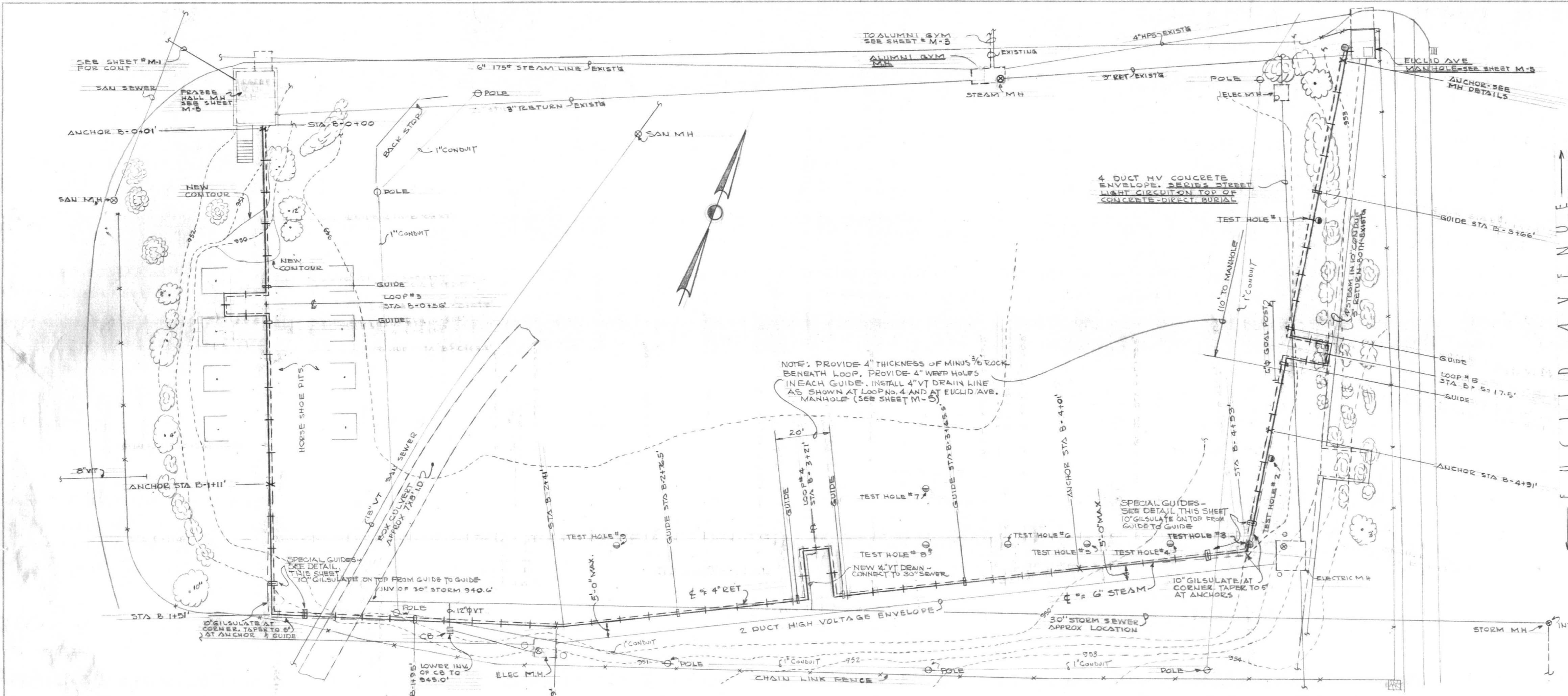
DATE: *November 12, 1959*

U-1246

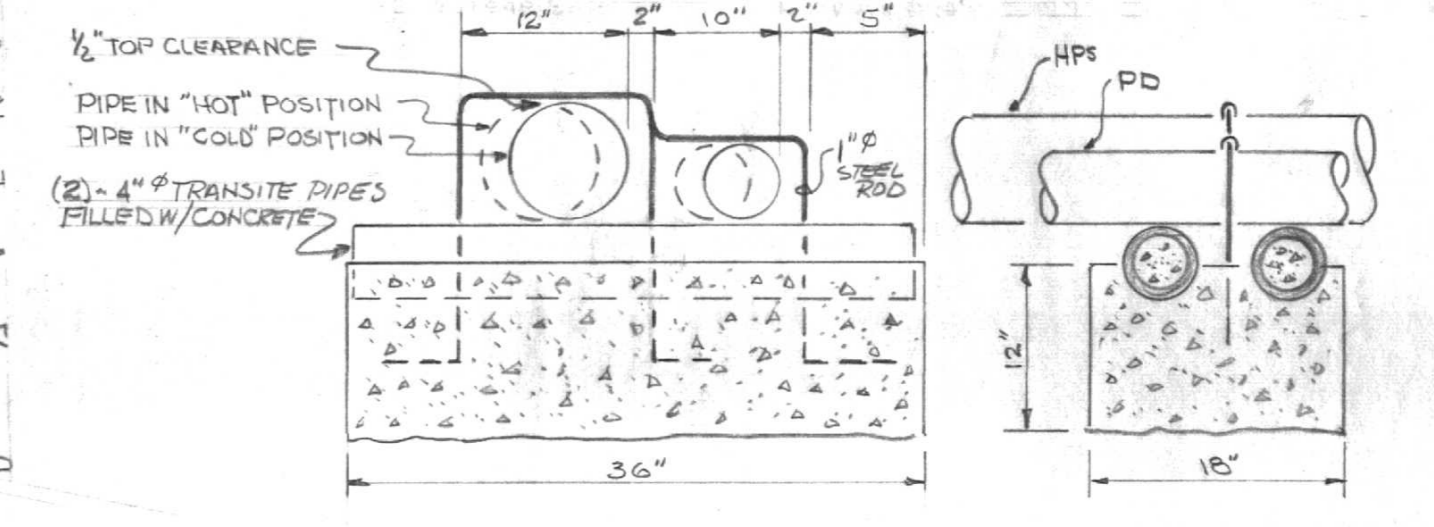


DATE	
BY	
REVISIONS	
NO.	
PLANNED	
DESIGNED	
CHECKED	
BY	
DATE	

DATE	
BY	
REVISIONS	
NO.	
PROFILE	
DESIGNED	
CHECKED	
BY	
DATE	



TEST HOLE	TOP ELEV	ROCK ELEV	REMARKS
1	951.45	946.85	
2	950.54		NO ROCK AT 5'-0"
3	950.58	946.58	
4	950.17	946.00	
5	949.91	945.80	
6	949.96	947.96	
7			NO ROCK AT 5'-0"
8	949.82	947.82	
9	949.38		NO ROCK AT 4'



UTILITY DISTRIBUTION - PROJECT NO. 2  
UNIVERSITY OF KENTUCKY  
LEXINGTON, KENTUCKY

DATE: NOV. 12, 1959

PROJECT: J.S.A. LINE "B"

ENGINEER: PROCTOR, INGELS & ASSOCIATES CONSULTING ENGINEERS, LEXINGTON, KENTUCKY

REGISTERED PROFESSIONAL ENGINEER: THOMAS G. MARTIN, No. 2449, STATE OF KENTUCKY

REVISION: 11/23/59

DRAWING NO. M-2

APPROVED: Frank Stearns

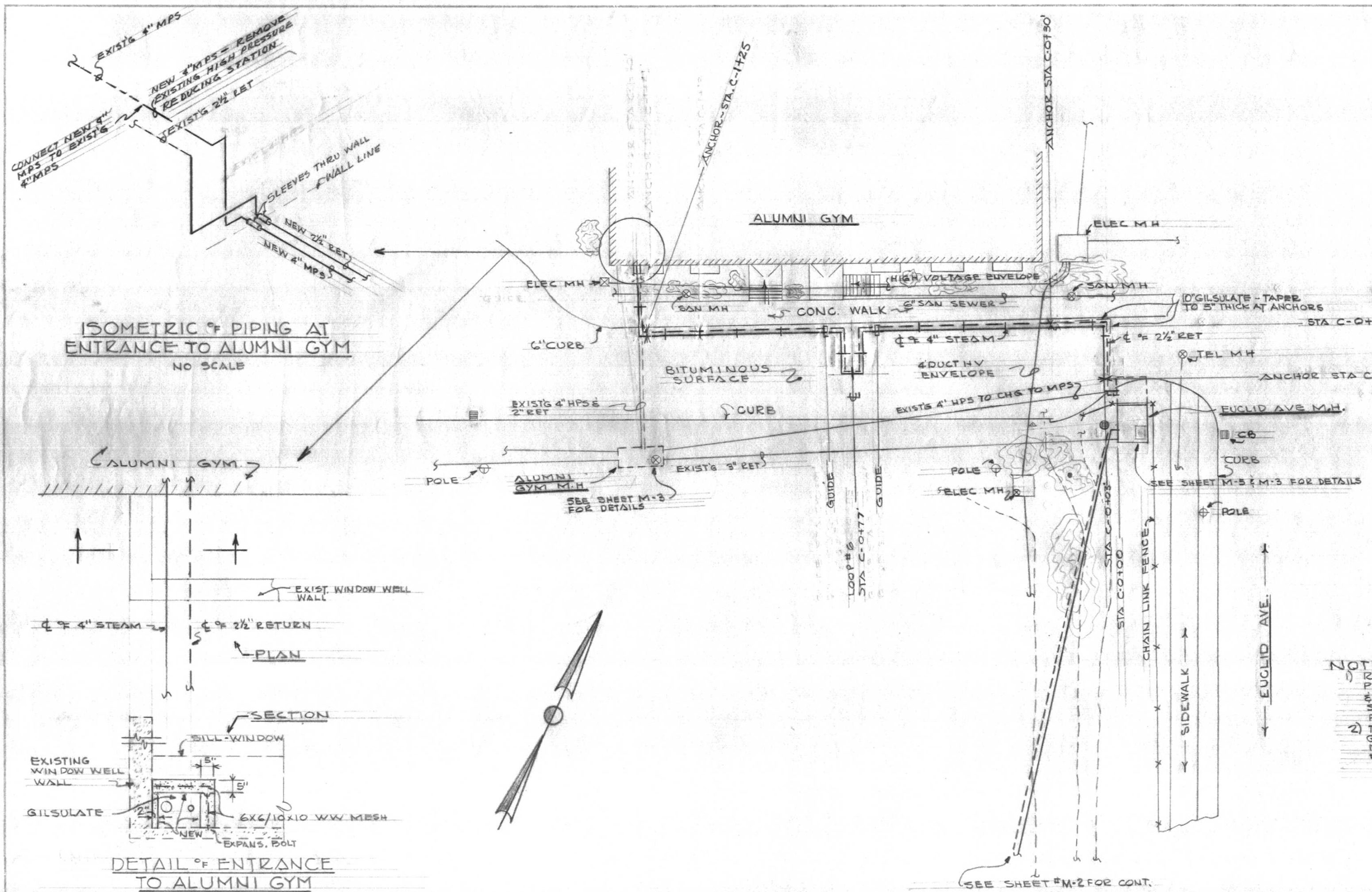
SCALE  
HORIZ 1"=20'  
VERT 1"=5'



U-1248

DATE	
BY	
NO.	
REVISIONS	
APPROVED	
NOTE BOOK	
NO.	

DATE	
BY	
NO.	
REVISIONS	
APPROVED	
NOTE BOOK	
NO.	

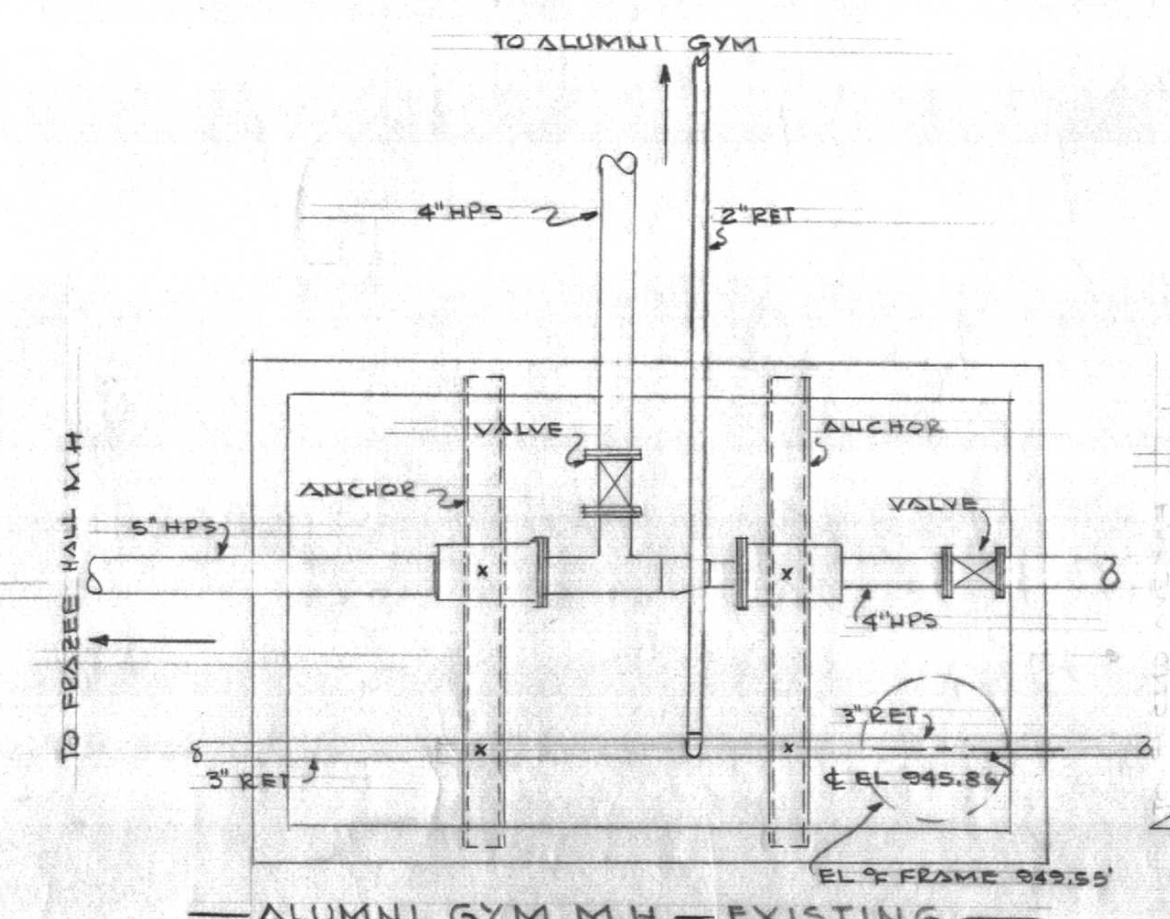


ISOMETRIC OF PIPING AT ENTRANCE TO ALUMNI GYM  
NO SCALE

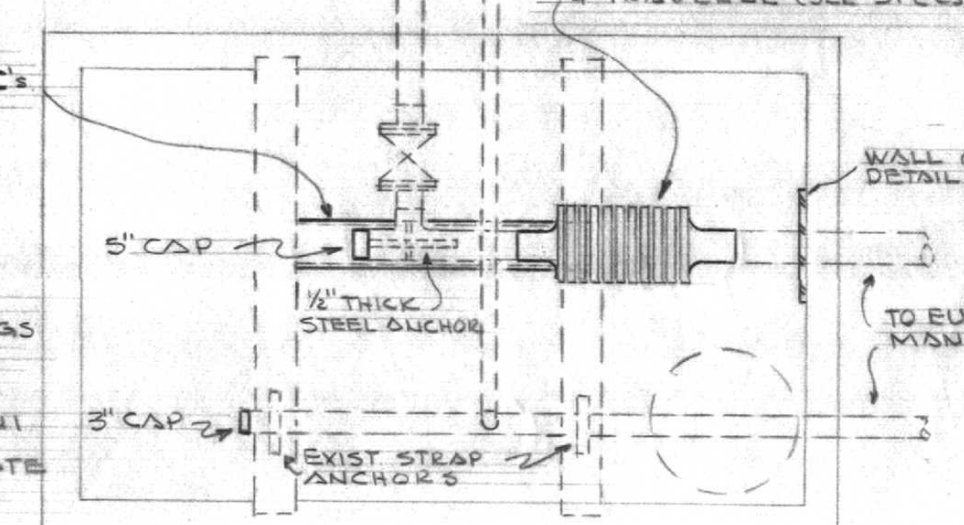
PLAN

SECTION

DETAIL OF ENTRANCE TO ALUMNI GYM  
NO SCALE

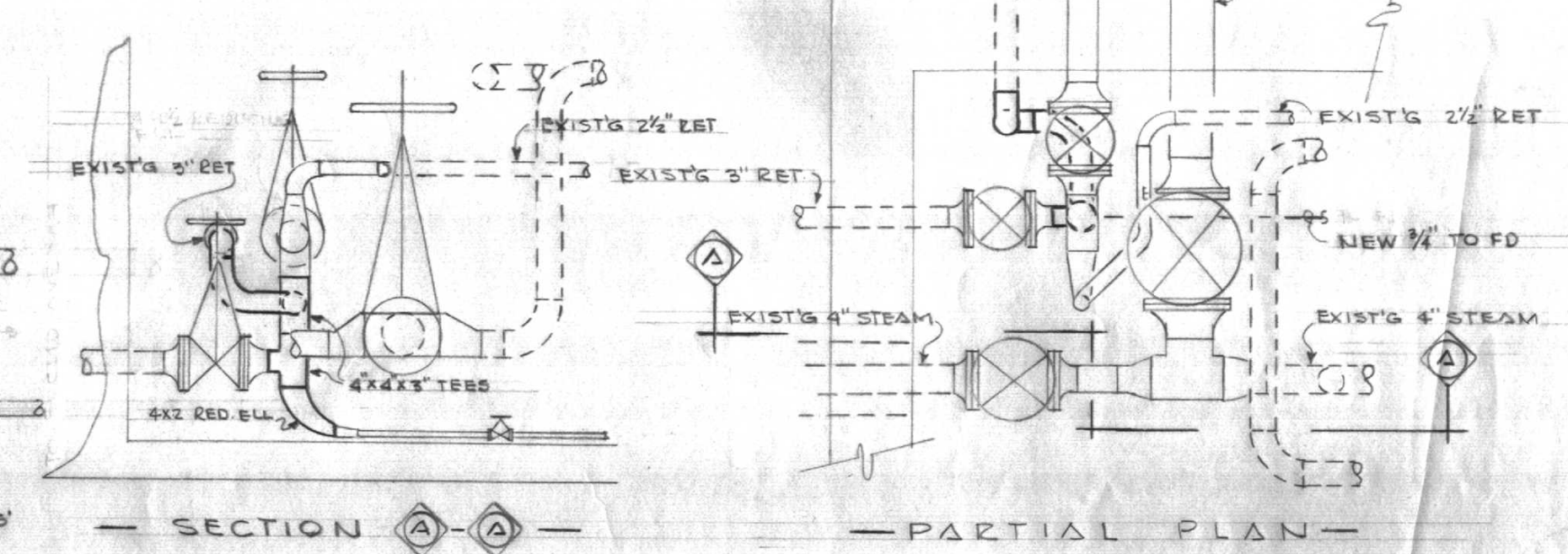


ALUMNI GYM M.H. - EXISTING  
SCALE 1/8" = 1'-0"



ALUMNI GYM M.H. - REVISED  
SCALE 1/8" = 1'-0"

- NOTES:
- 1) REMOVE ALL EXISTING PIPING, VALVES, FITTINGS & ACCESSORIES NOT SHOWN ON REVISED PLAN & M.H.
  - 2) THE CHANGES IN ALUMNI GYM M.H. ARE TO BE MADE UNDER ALTERNATE #1.



PART-EUCLID AVE MANHOLE  
SCALE 1/2" = 1'-0"

NOTE  
THE ABOVE SECTION PLAN SHOWS REVISION TO EXISTING 3" RETURN UNDER ALTERNATE #1 ALL OTHER REVISIONS ARE UNDER BASE BID.

**STEAM**

UTILITY DISTRIBUTION - PROJECT NO 2  
UNIVERSITY OF KENTUCKY  
LEXINGTON, KENTUCKY

LINE "C"

DESIGNED BY J.S.A.	DATE NOV. 12, 1959
TRACED BY J.S.A.	SCALE AS NOTED
CHECKED BY T.G.M.	SPEC. NO.

PROCTOR, INGERS & ASSOCIATES  
CONSULTING ENGINEERS  
LEXINGTON, KENTUCKY

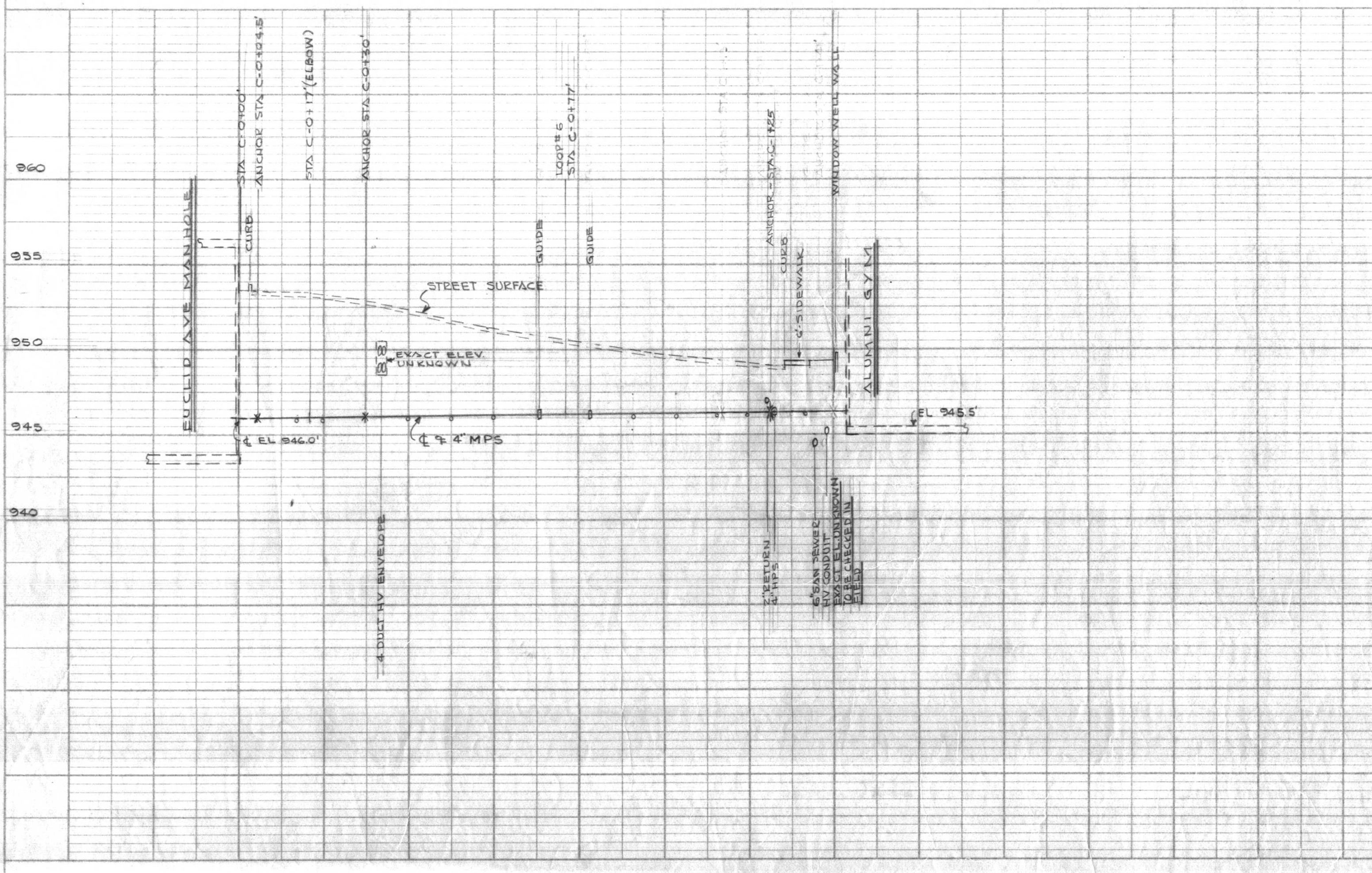
COMMONWEALTH OF KENTUCKY  
DEPARTMENT OF TRANSPORTATION  
ENGINEERING STAFF  
FRANKFORT, KENTUCKY

DRAWING NO.  
**M-3**

APPROVED BY: *Frank Steenson* DATE: 11/17/59  
APPROVED BY: *J.F. Beckler* DATE: 11/18/59



Thomas G. Martin  
Approved



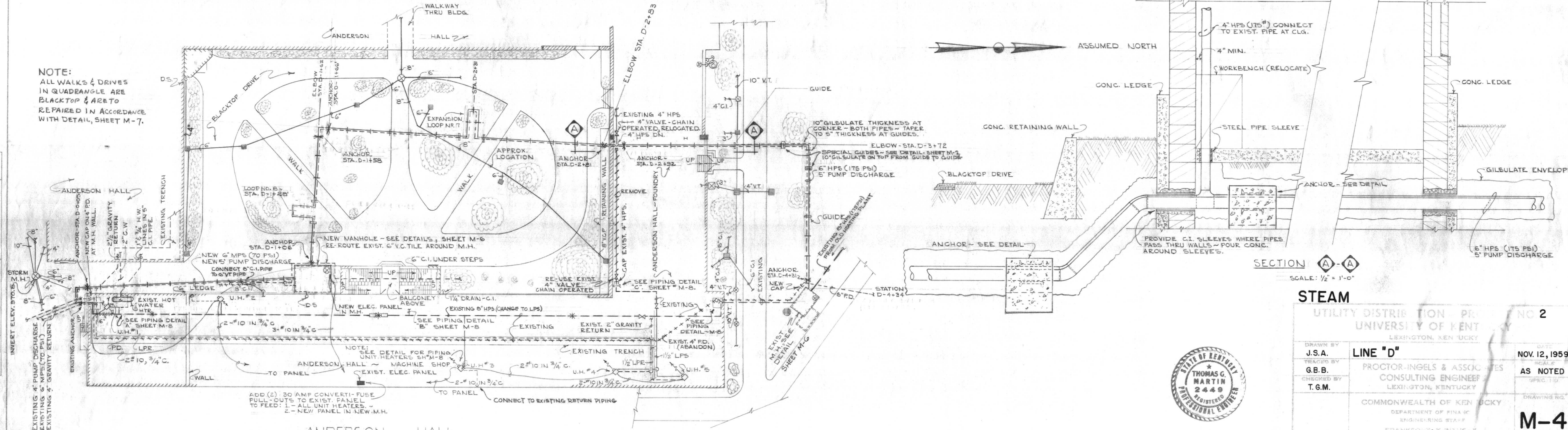
SCALE  
HORIZ 1" = 20'  
VERT 1" = 5'

U-1249

DATE	
BY	
REVISIONS	
NO.	
DESCRIPTION	

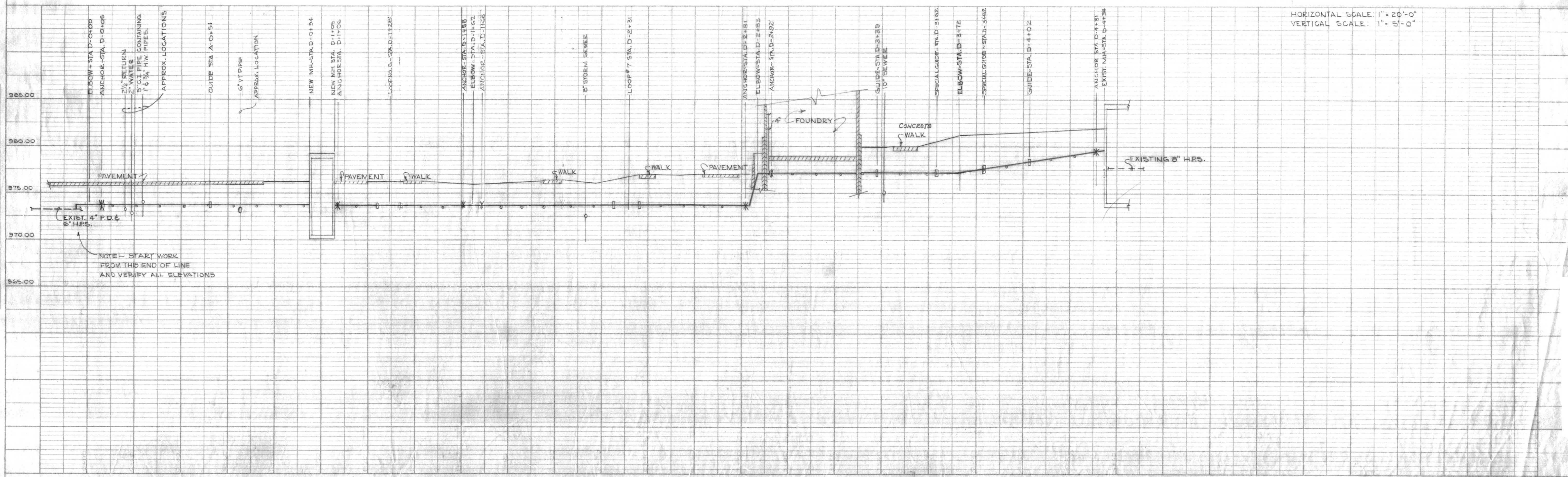
DATE	
BY	
REVISIONS	
NO.	
DESCRIPTION	

NOTE:  
ALL WALKS & DRIVES  
IN QUADRANGLE ARE  
BLACKTOP & ARE TO  
REPAIRED IN ACCORDANCE  
WITH DETAIL, SHEET M-7.

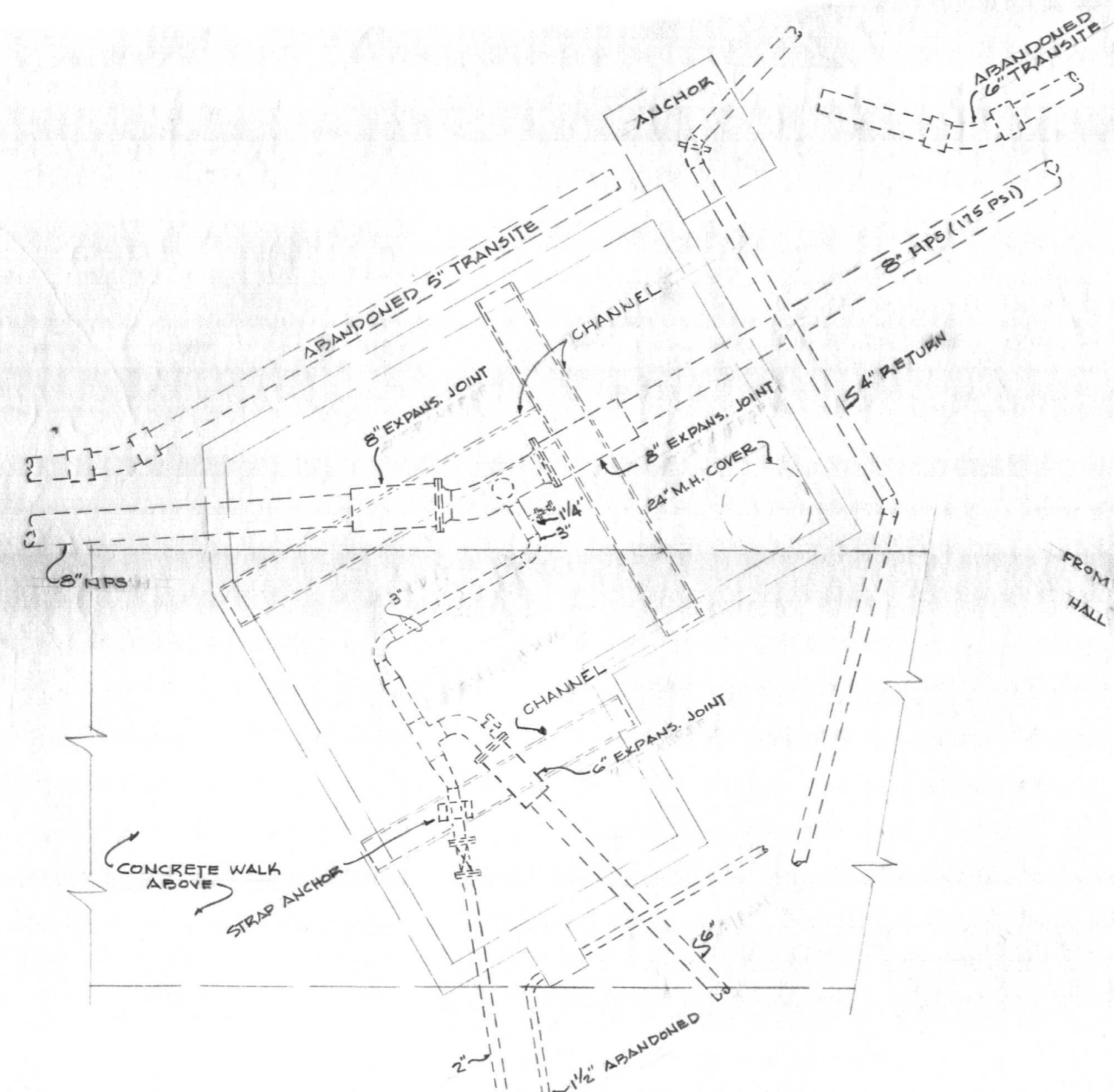


Thomas G. Martin  
Approved [Signature]

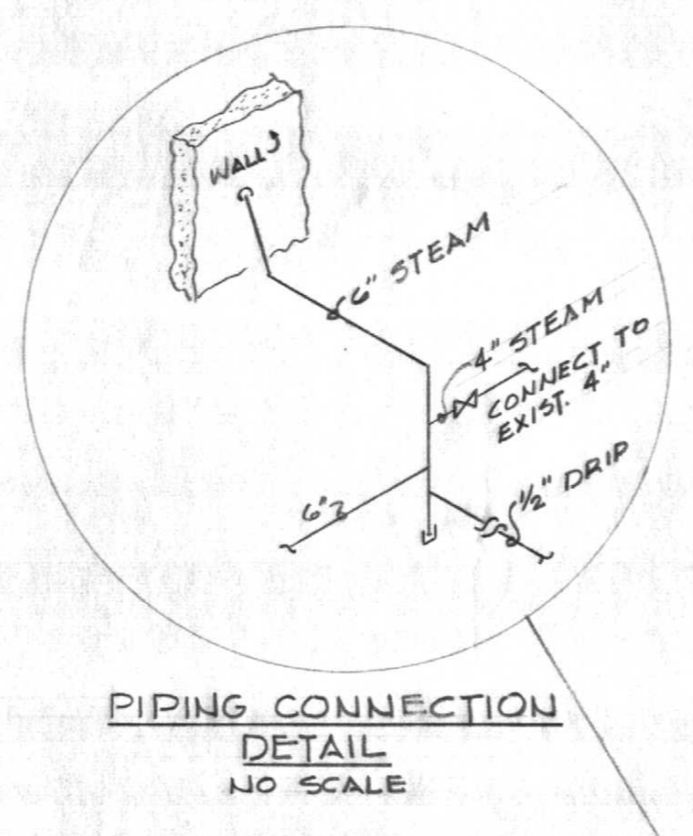
UTILITY DISTRIBUTION PROJECT NO. 2		
UNIVERSITY OF KENT LEXINGTON, KENTUCKY		
DRAWN BY J.S.A.	LINE "D"	NOV. 12, 1959
TRACED BY G.B.B.	PROCTOR-INGELS & ASSOCIATES CONSULTING ENGINEER LEXINGTON, KENTUCKY	AS NOTED
CHECKED BY T.G.M.	COMMONWEALTH OF KENTUCKY DEPARTMENT OF FINANCE ENGINEERING STAFF FRANKFORT, KENTUCKY	DRAWING NO. <b>M-4</b>
APPROVED BY [Signature]		11/13/59
SP. REVIEWED BY [Signature]		11/18/59



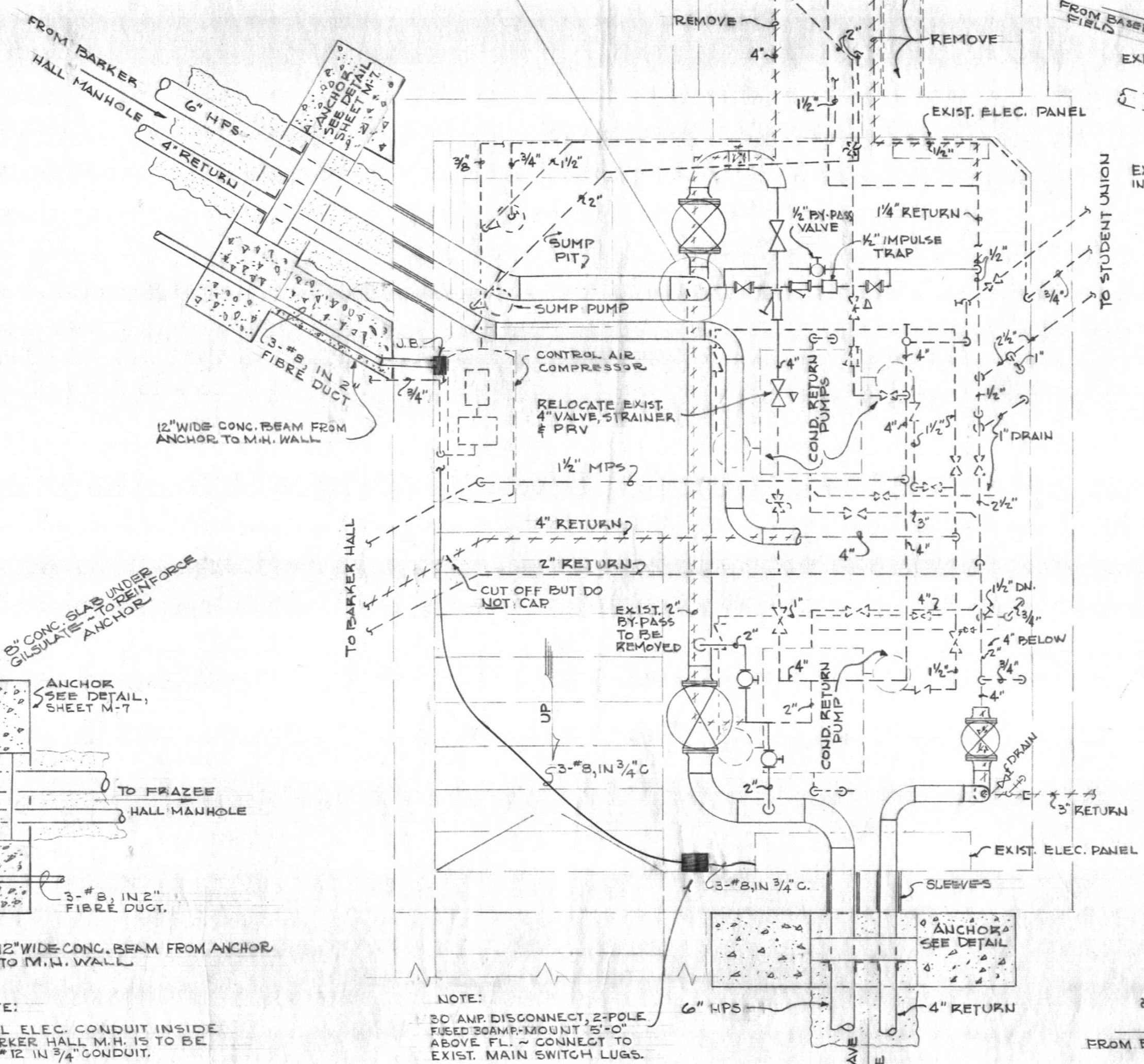
U-1250



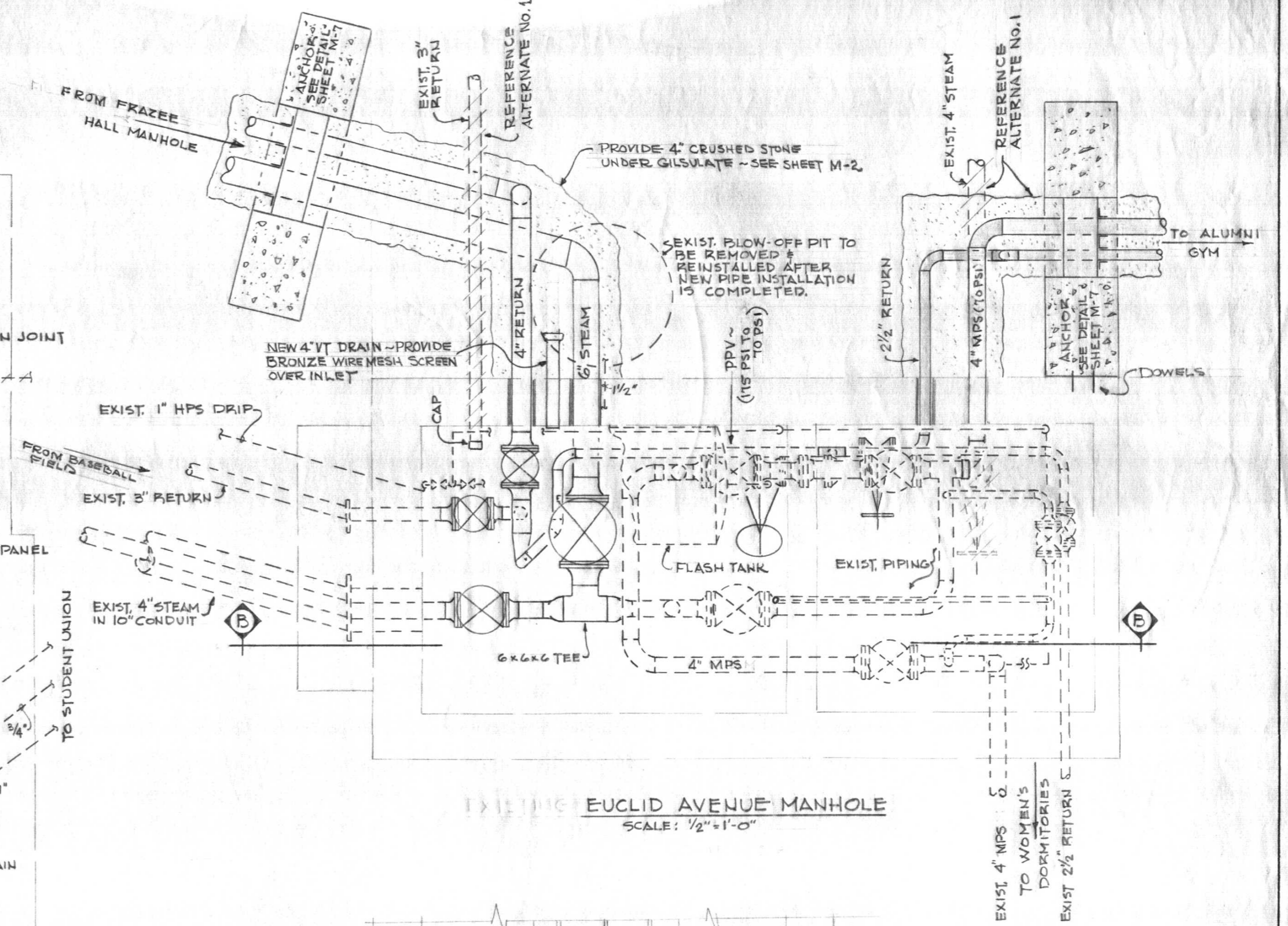
EXISTING BARKER HALL MANHOLE  
SCALE: 3/8"=1'-0"



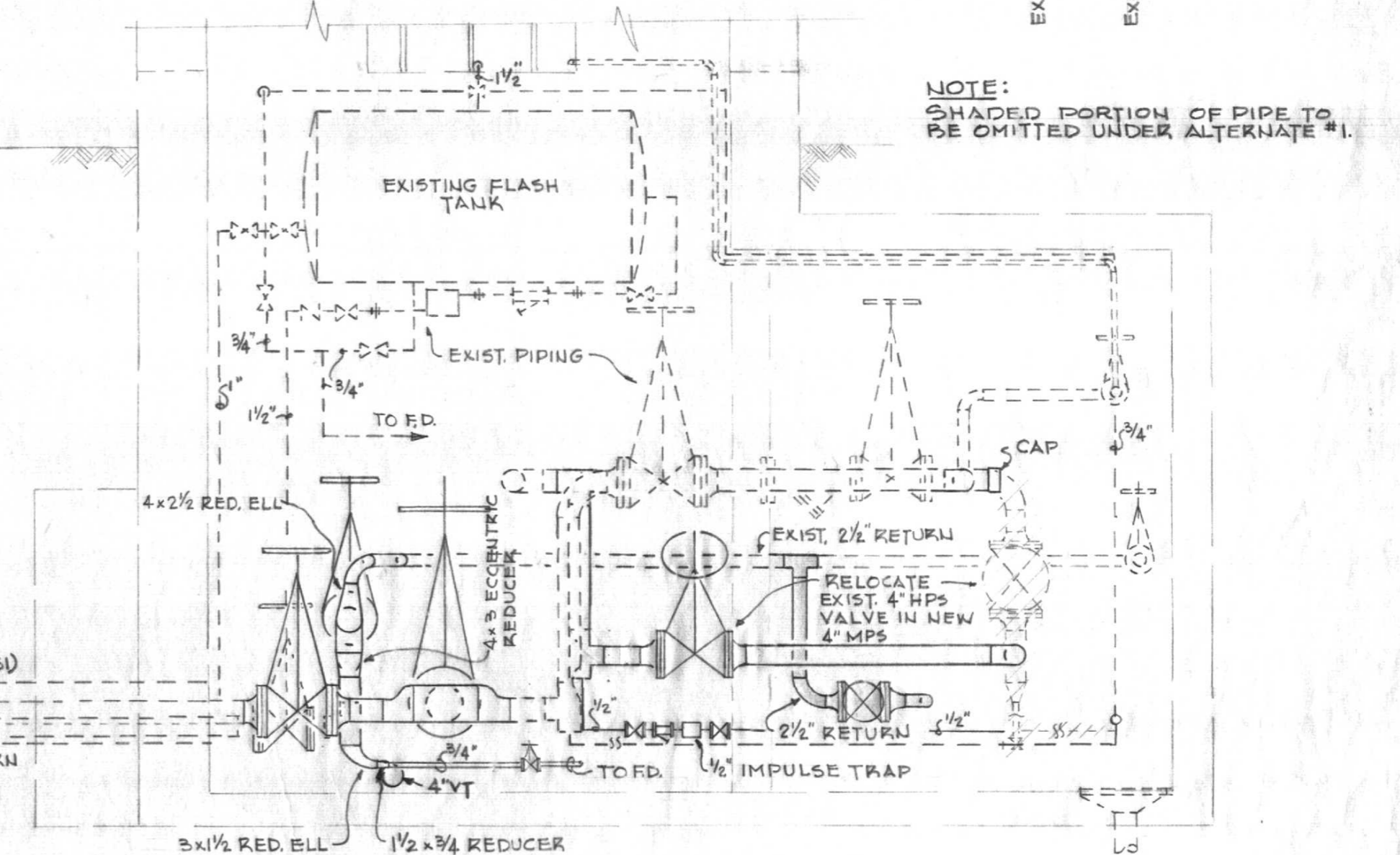
PIPING CONNECTION  
DETAIL  
NO SCALE



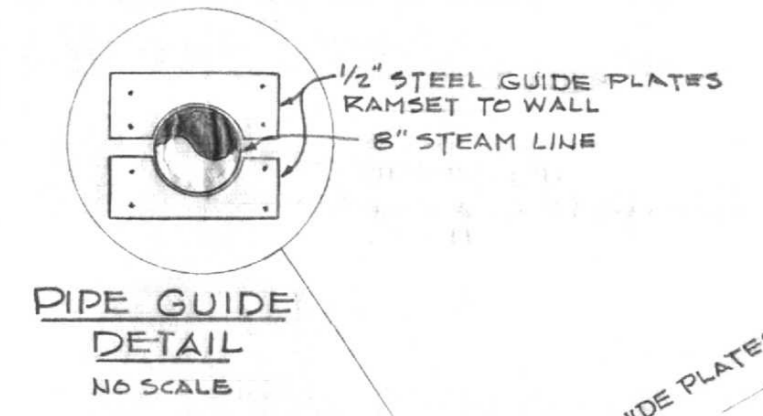
FRAZEE HALL MANHOLE  
SCALE: 1/2"=1'-0"



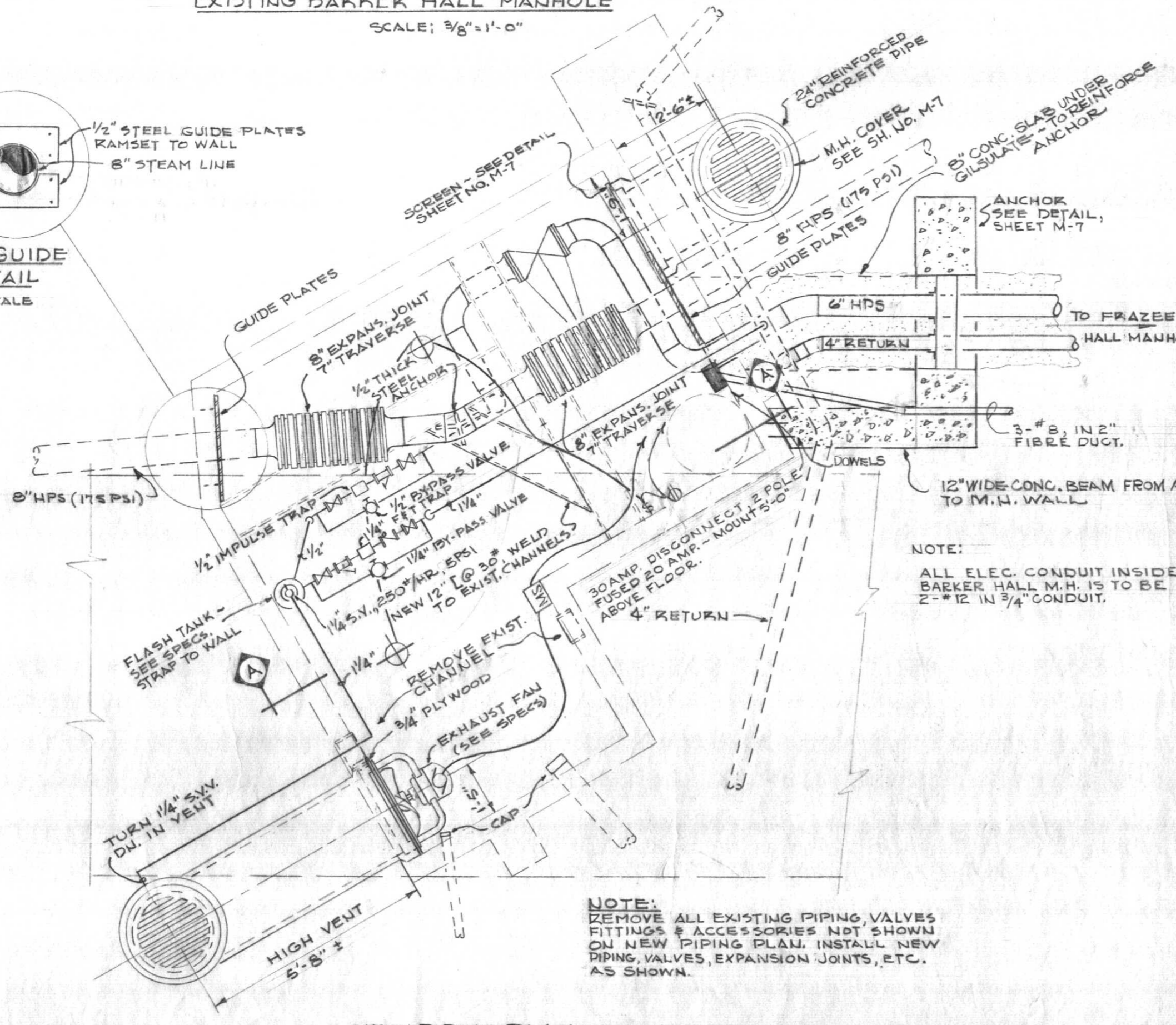
EUCLID AVENUE MANHOLE  
SCALE: 1/2"=1'-0"



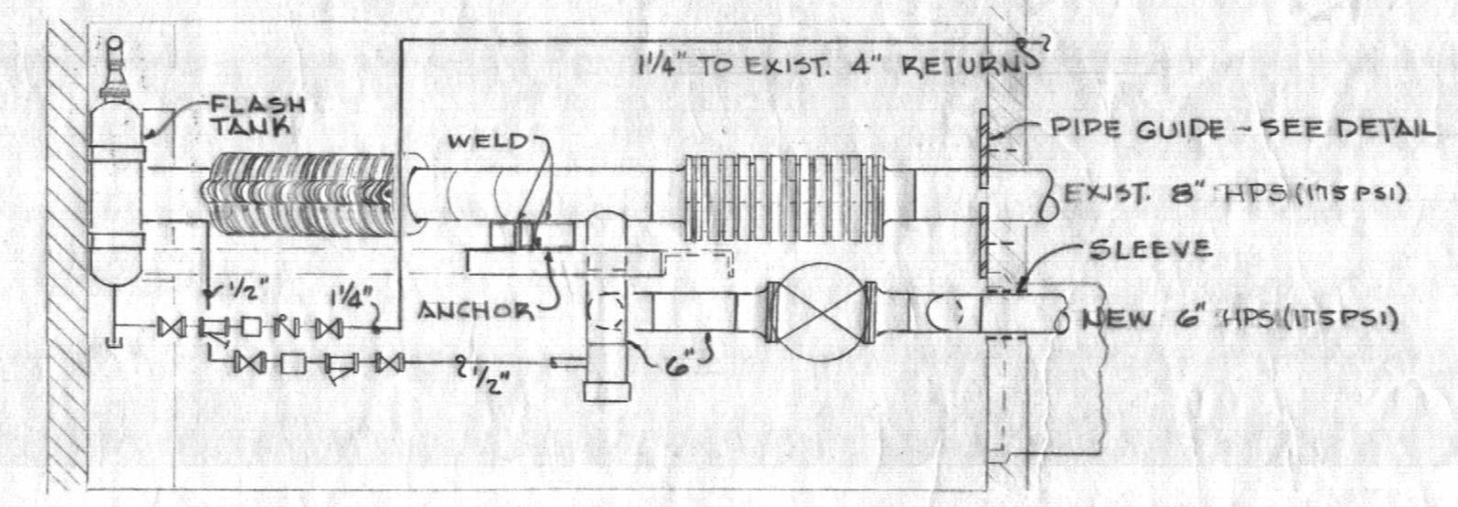
SECTION E-E  
SCALE: 1/2"=1'-0"



PIPE GUIDE  
DETAIL  
NO SCALE



NEW PIPING PLAN ~  
BARKER HALL MANHOLE  
SCALE: 3/8"=1'-0"



SECTION A-A  
SCALE: 3/8"=1'-0"

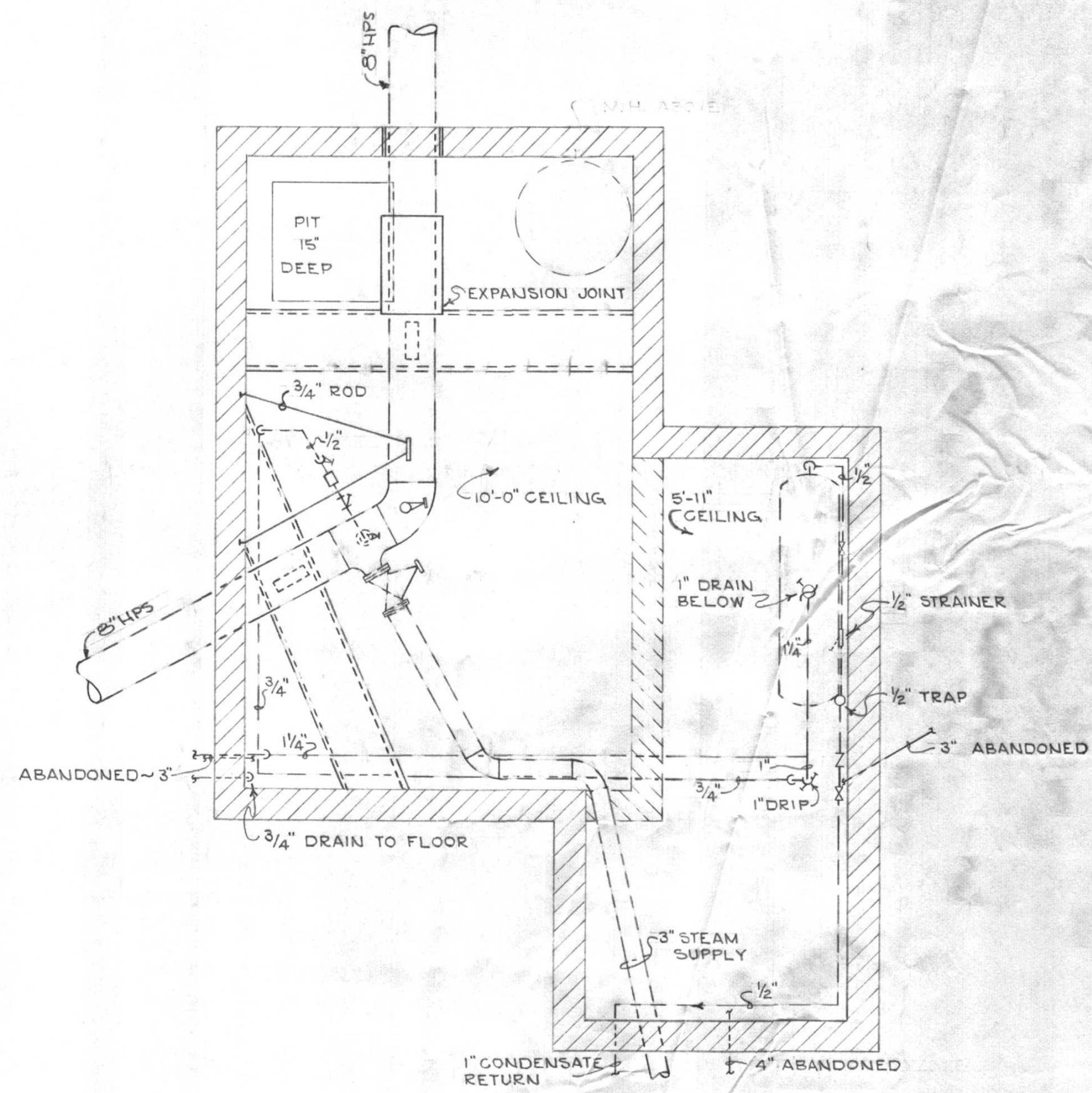
STEAM		
UTILITY DISTRIBUTION - PROJECT NO. 2		
UNIVERSITY OF KENTUCKY		
LEXINGTON, KENTUCKY		
DRAWN BY W.E.P.	<b>MANHOLE DETAILS</b>	DATE NOV. 12, 1959
TRACED BY W.E.P.	PROCTOR, INGELS & ASSOCIATES CONSULTING ENGINEERS LEXINGTON, KENTUCKY	SCALE AS NOTED
CHECKED BY T.G.M.		DRAWING NO. <b>M-5</b>
REVISED: 11/23/59	COMMONWEALTH OF KENTUCKY DEPARTMENT OF FINANCE ENGINEERING STAFF FRANKFORT, KENTUCKY	APPROVED BY 11/13/59
	APPROVED BY 11/16/59	



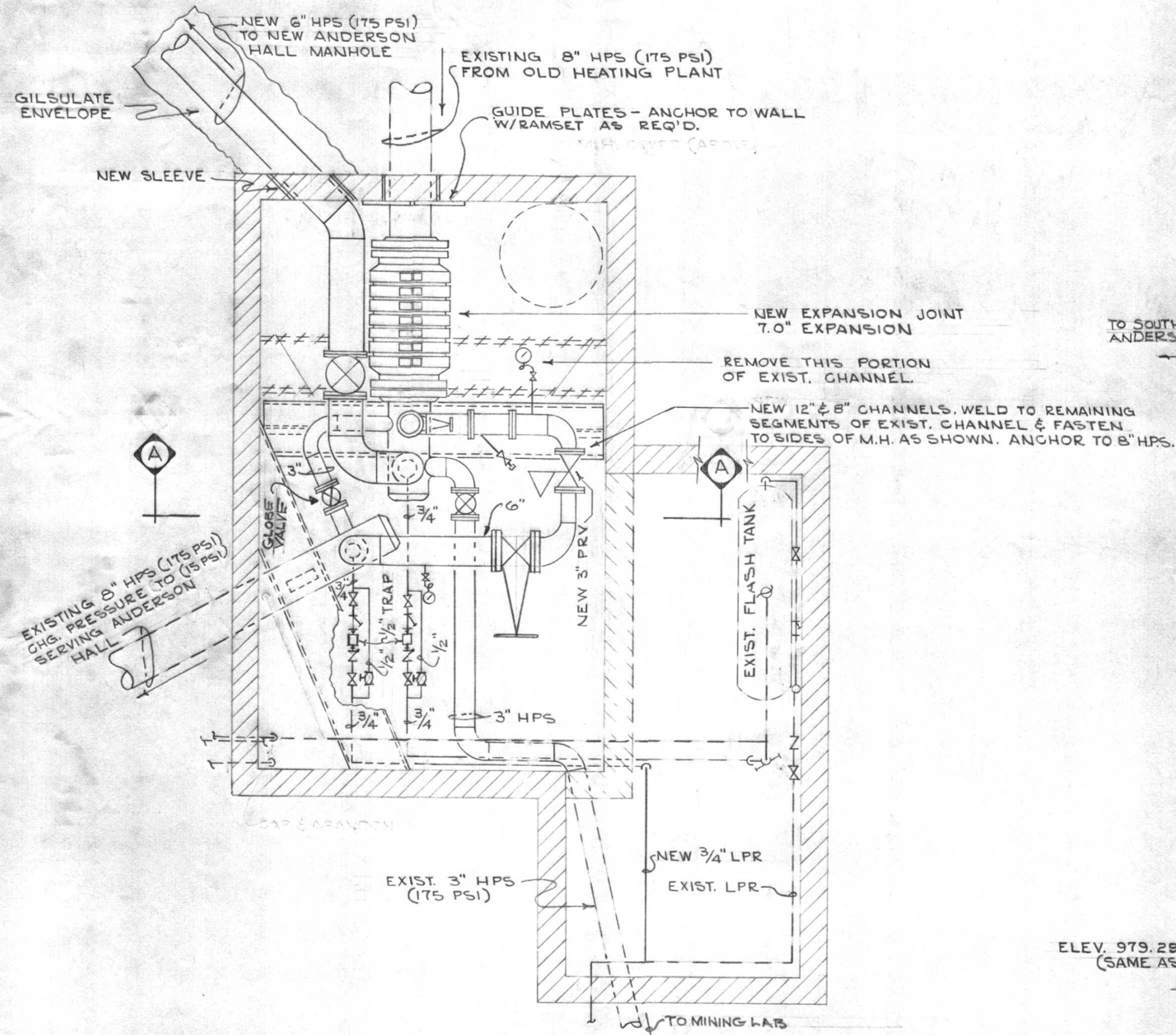
Thomas G. Martin  
Approved

Frank Stearns  
Approved

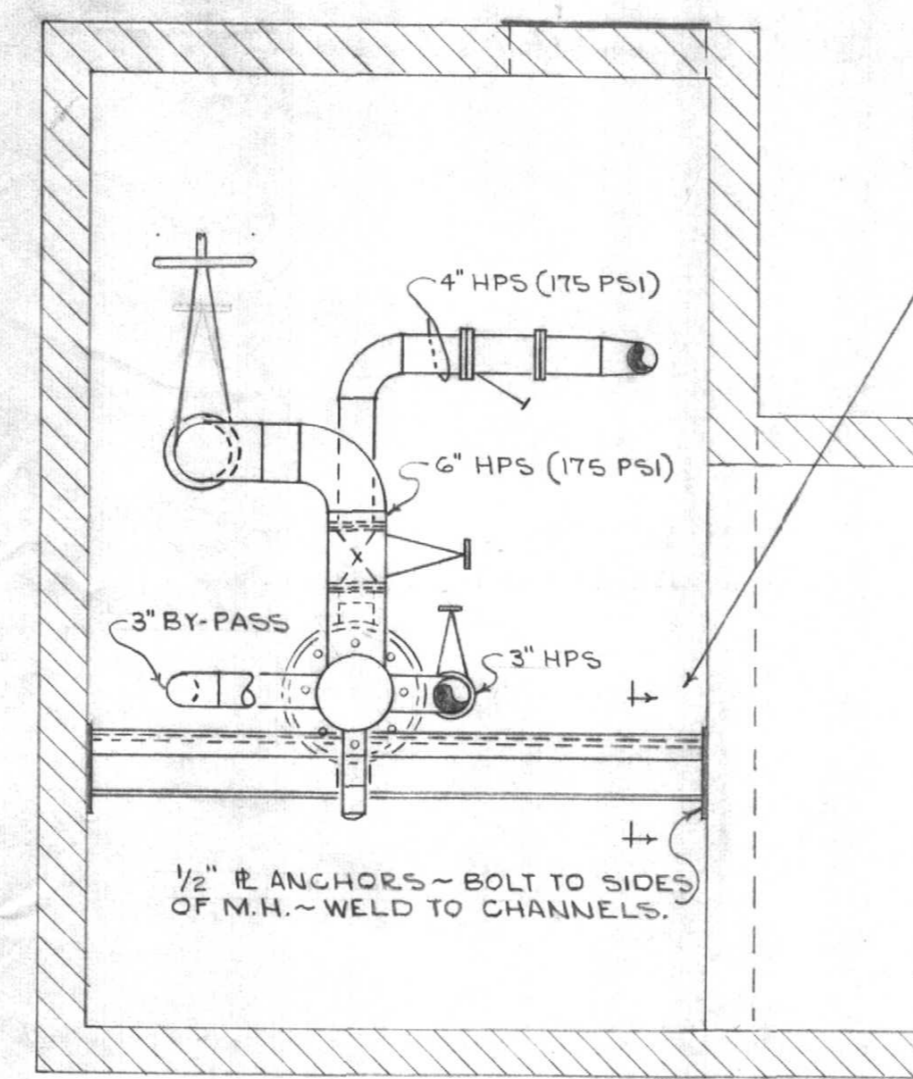
U-1251



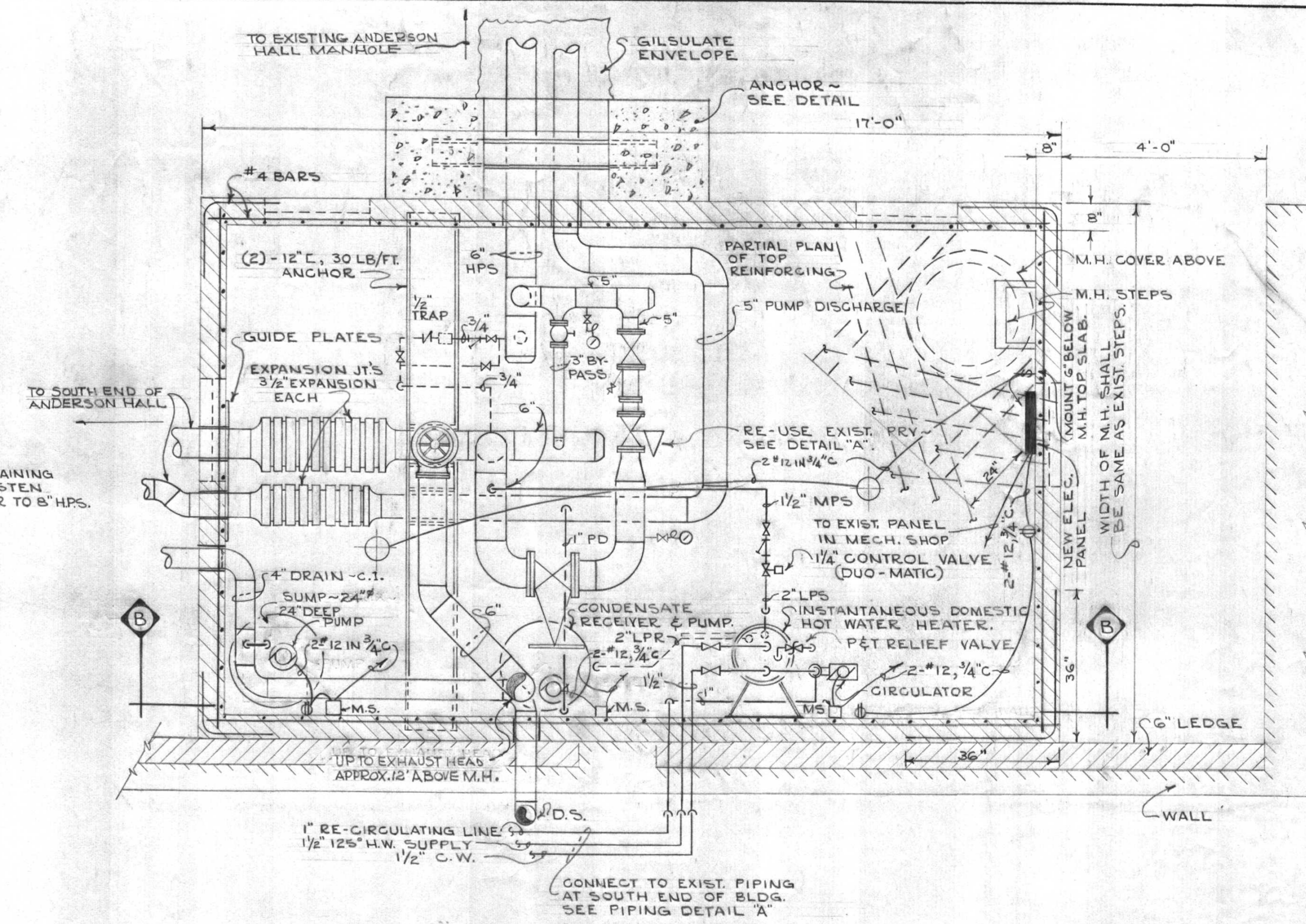
EXISTING ANDERSON HALL MANHOLE PLAN  
SCALE: 1/2" = 1'-0"



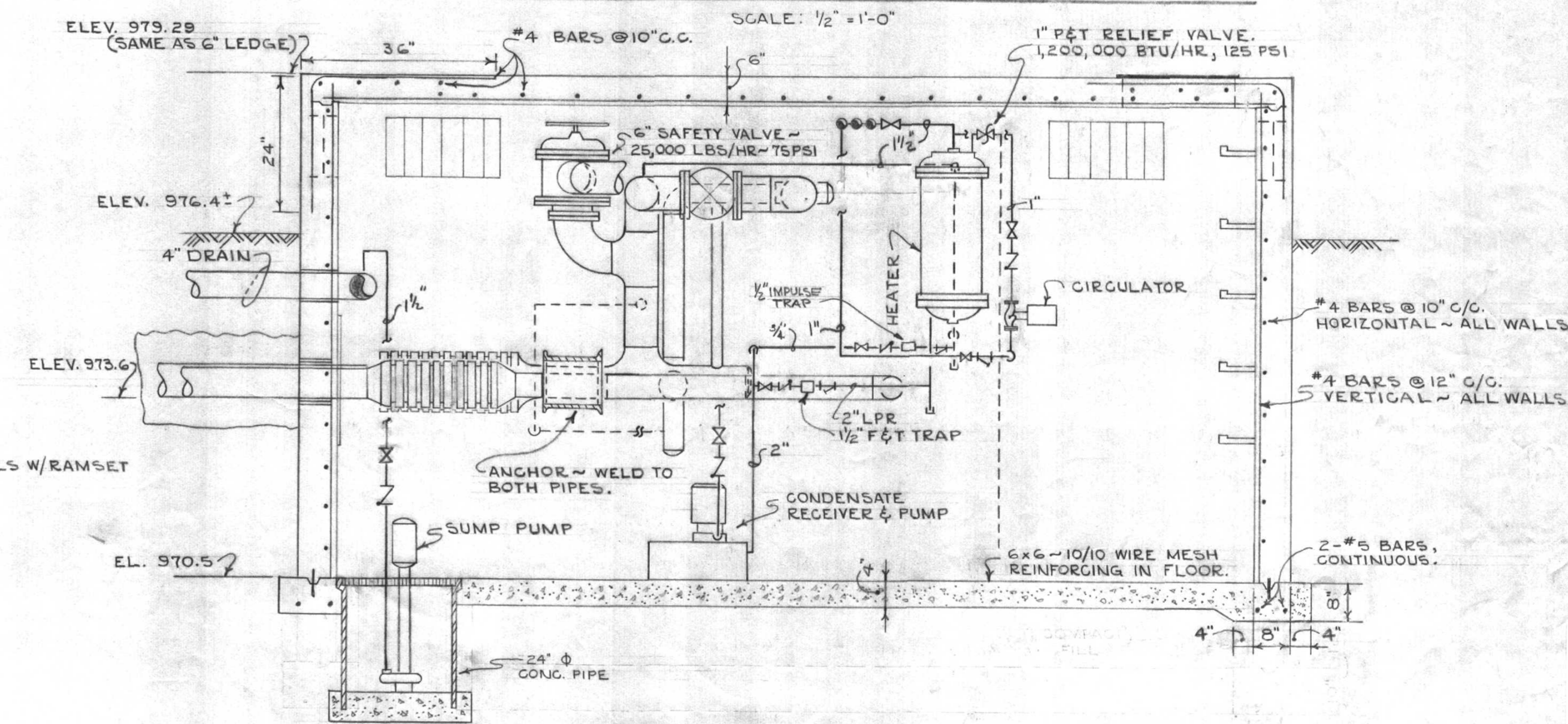
REVISED PLAN OF EXISTING MANHOLE  
SCALE: 1/2" = 1'-0"



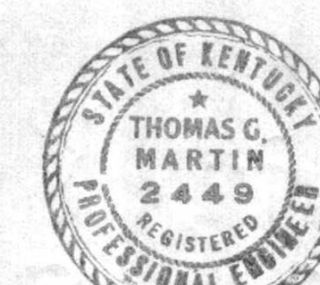
SECTION A-A  
SCALE: 1/2" = 1'-0"



PLAN OF NEW ANDERSON HALL MANHOLE



SECTION B-B  
SCALE: 1/2" = 1'-0"



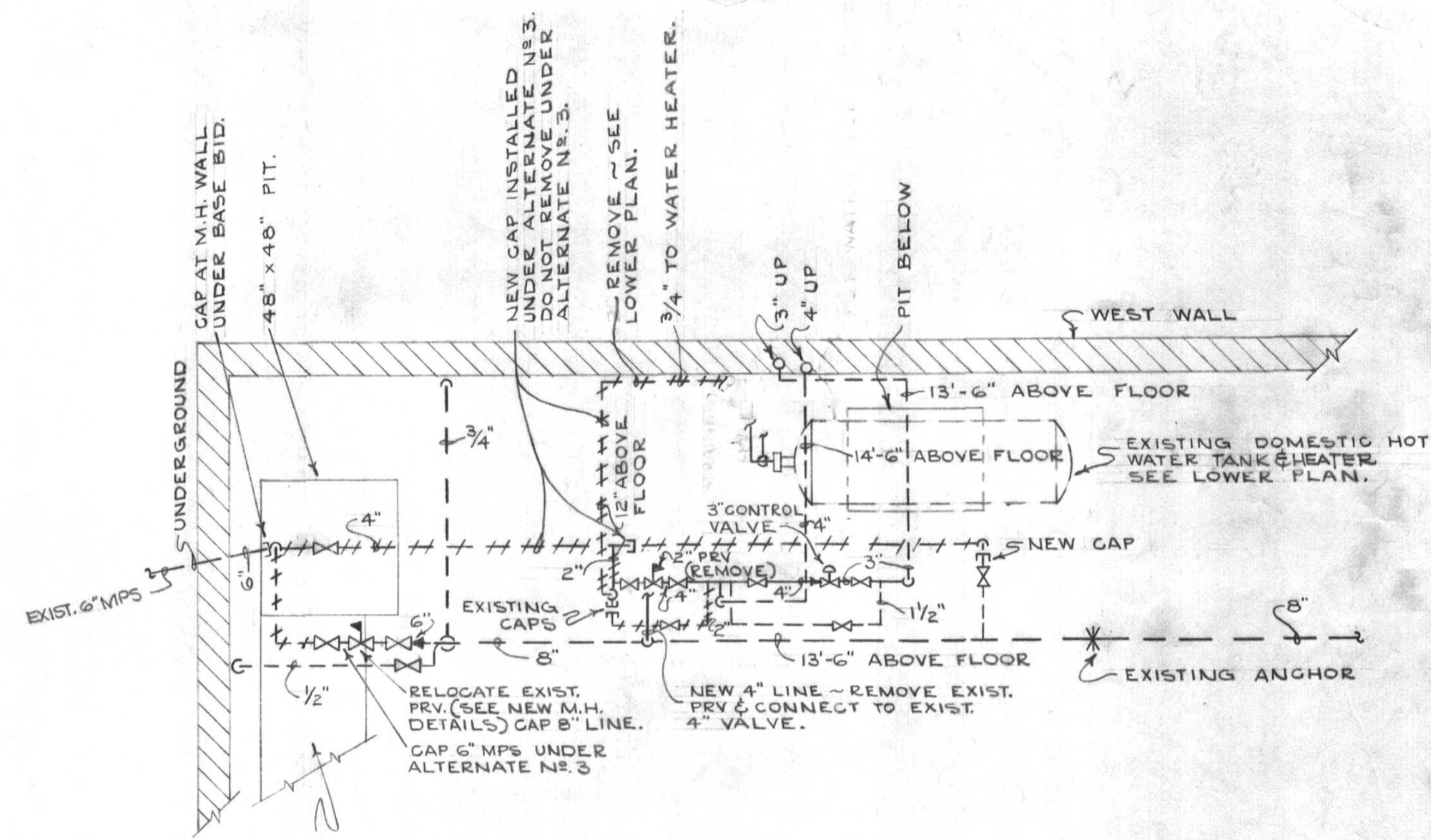
Thomas G. Martin  
Approved

STEAM		
UTILITY DISTRIBUTION - PROJECT NO 2		
UNIVERSITY OF KENTUCKY		
LEXINGTON, KENTUCKY		
DRAWN BY C.L.F.	MANHOLE DETAILS	NOV. 12, 1959
DESIGNED BY G.B.B.	PROCTOR-INGLIS & ASSOCIATES CONSULTING ENGINEERS LEXINGTON, KENTUCKY	AS NOTED
CHECKED BY T.G.M.	COMMONWEALTH OF KENTUCKY DEPARTMENT OF FINANCE ENGINEERING STAFF COLUMBIA UNIVERSITY LEXINGTON, KENTUCKY	DRAWING NO. <b>M-6</b>
APPROVED BY Frank Stearns	DATE 11/17/59	
APPROVED BY G.F. Beck	DATE 11/18/59	

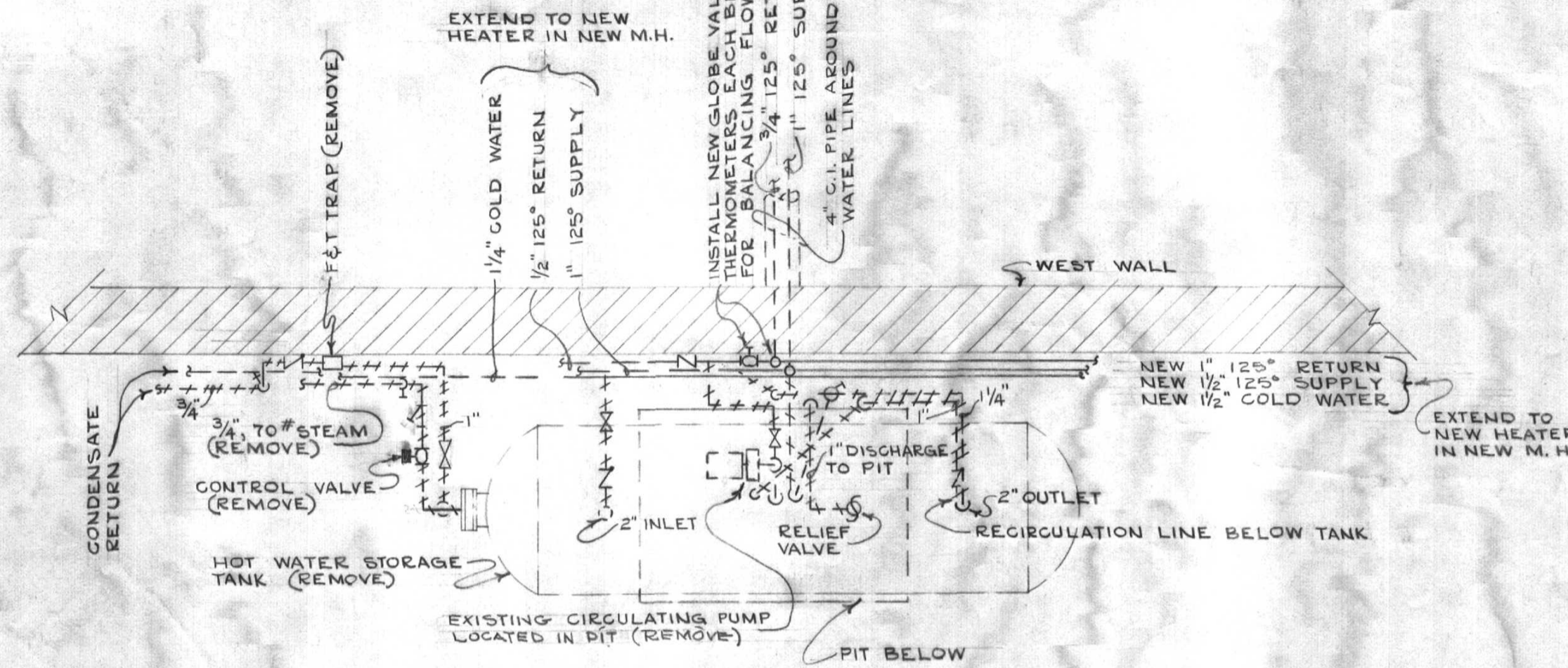
V-1252



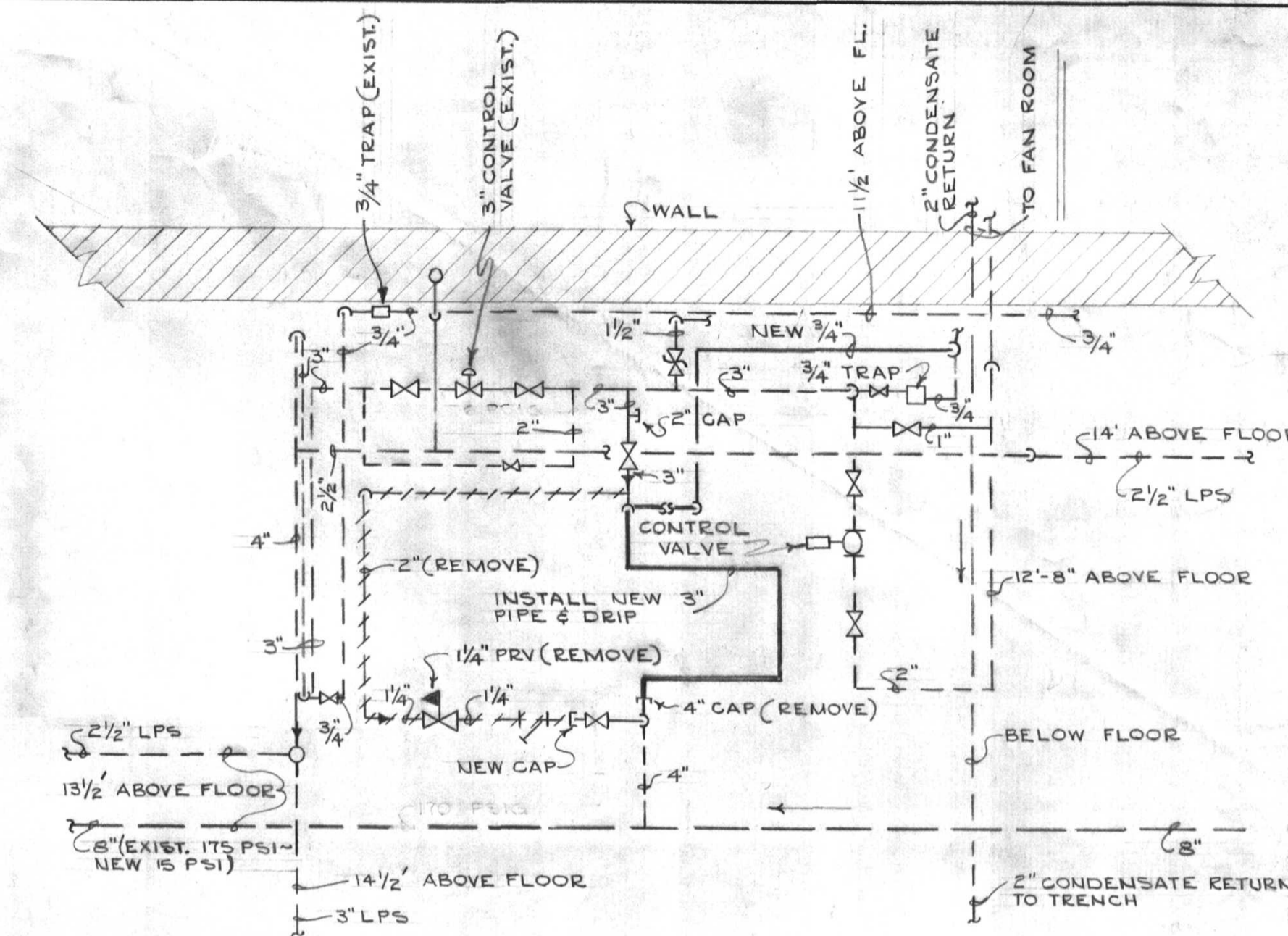




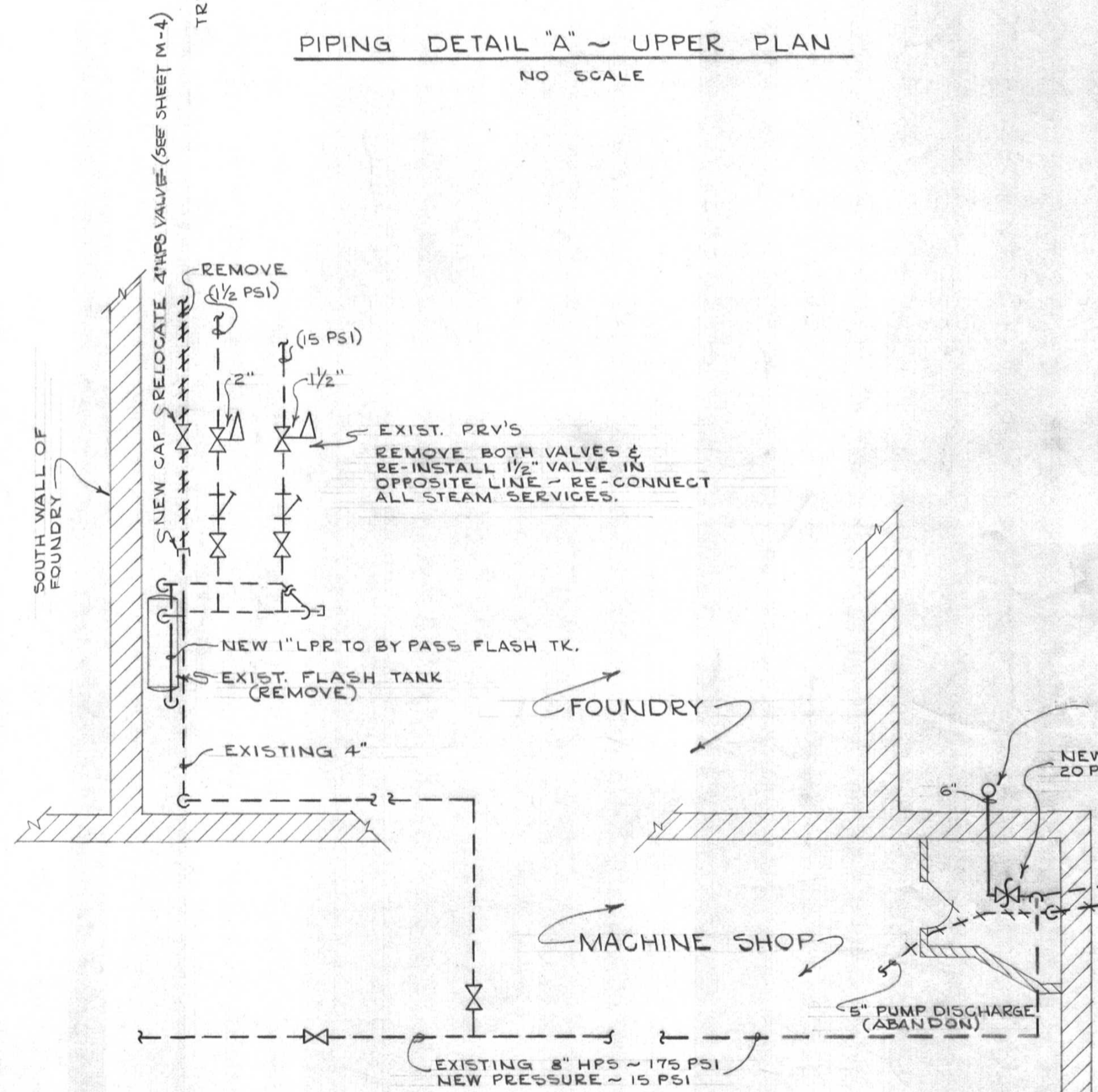
PIPING DETAIL "A" - UPPER PLAN  
NO SCALE



PIPING DETAIL "A" - LOWER PLAN  
NO SCALE

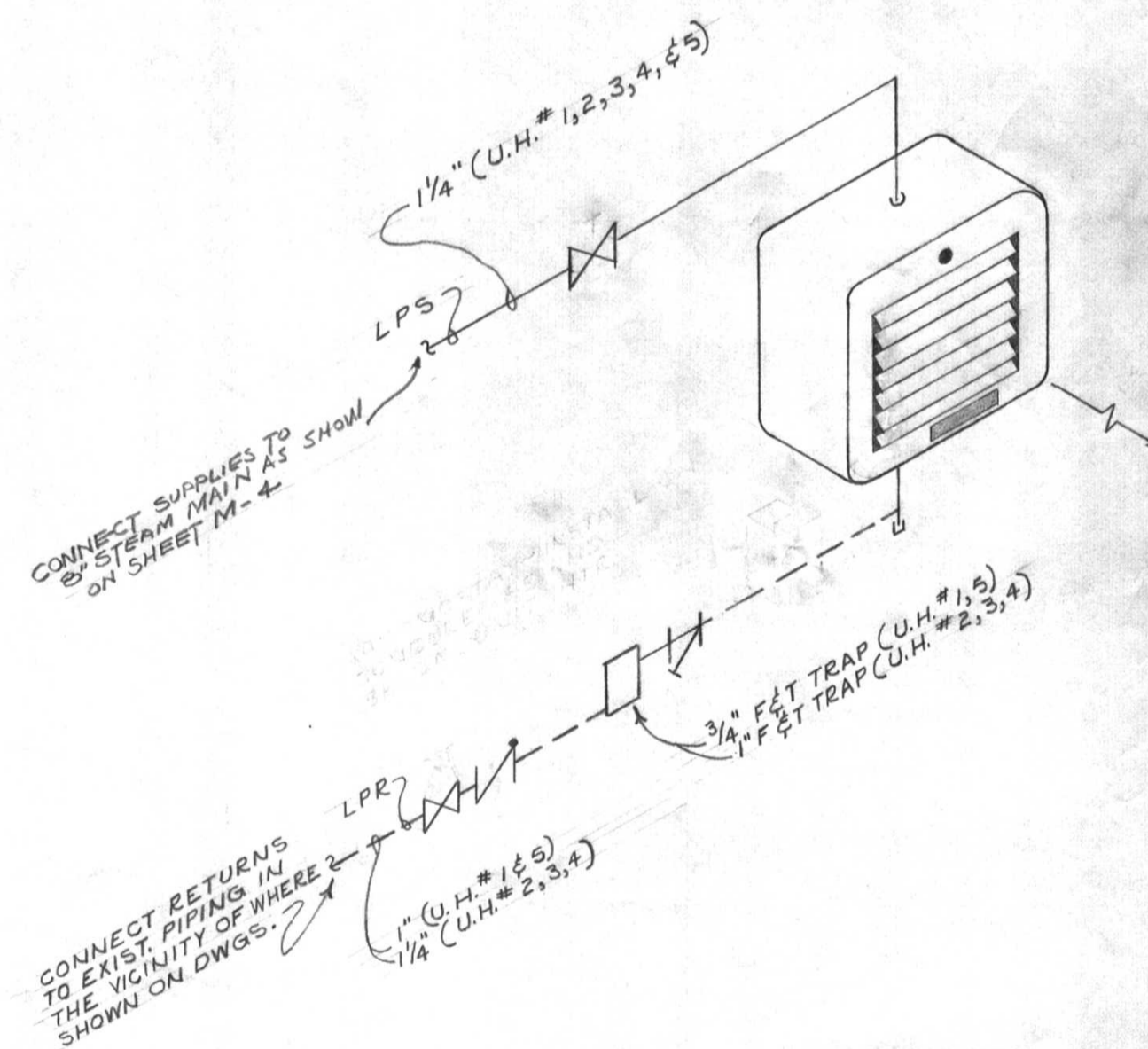


PIPING DETAIL "B"  
NO SCALE



PIPING DETAIL "C"  
NO SCALE

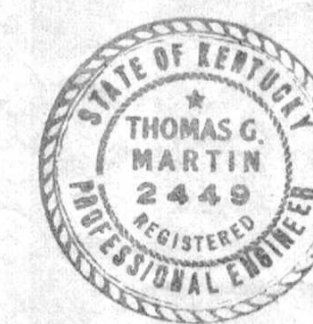
PIPING DETAIL "D"  
NO SCALE



UNIT HEATER PIPING DETAIL  
NO SCALE

STEAM

QUALITY DISTRIBUTION - PROJECT NO 2  
UNIVERSITY OF KENTUCKY



Thomas G. Martin  
Approved

DRAWN BY <b>C.L.F.</b>	<b>ANDERSON HALL PIPING DETAILS</b>	NOV. 12, 1959
TRACED BY <b>G.B.B.</b>	PROCTOR, INGEL & ASSOCIATES CONSULTING ENGINEERS LEXINGTON, KENTUCKY	AS NOTED
CHECKED BY <b>T.G.M.</b>	COMMONWEALTH OF KENTUCKY DEPARTMENT OF REVENUE ENGINEERING DIVISION ANKFORD, KENTUCKY	<b>M-8</b>
APPROVED BY	<i>Frank Steedman</i>	11/13/59
APPROVED BY	<i>J.P. Beckler</i>	11/18/59

U-1254

Document # 011977  
Sheet C-2  
Scale 1/192