

0011-33

WINDOW REPLACEMENT

FRAZEE HALL

ENGINEERING FILE NO. U-426

COMMONWEALTH OF KENTUCKY

**EXECUTIVE DEPARTMENT FOR
FINANCE & ADMINISTRATION**

BUREAU OF FACILITIES MANAGEMENT

DIVISION OF ENGINEERING

FRANKFORT KENTUCKY

UNIVERSITY OF KENTUCKY

DESIGN & CONSTRUCTION DIVISION

LEXINGTON KENTUCKY

01131

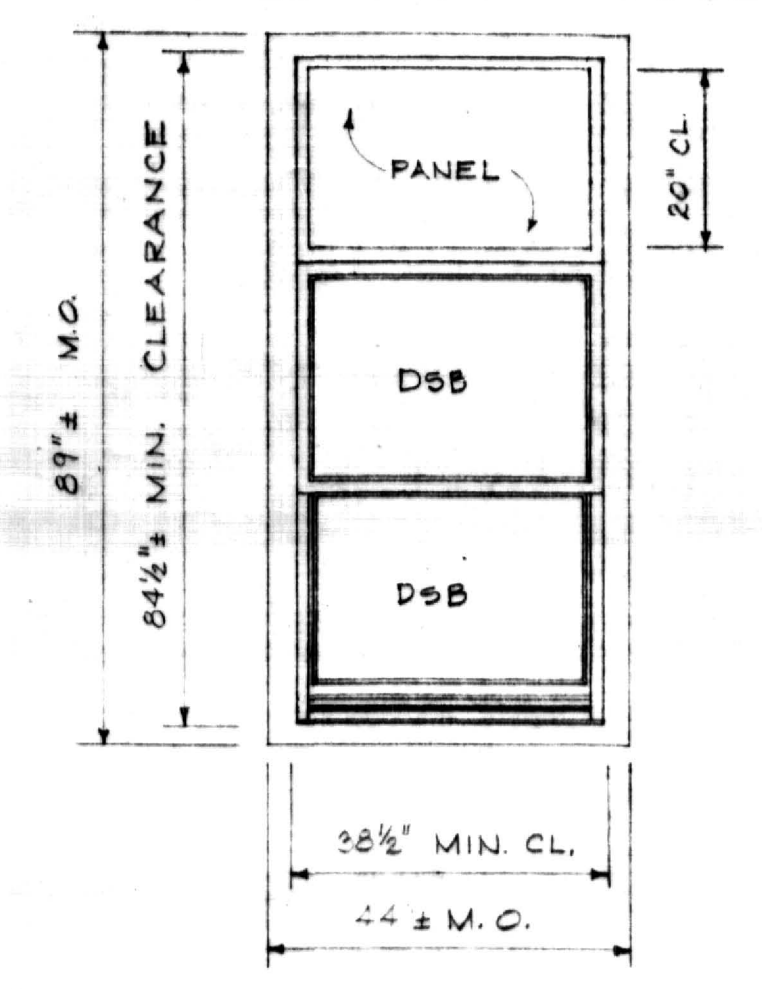


NOTE: FIRE ESCAPE ON THIS WALL TO ROOF.

NORTH ELEVATION
FRAZEE HALL
1/4" = 1'-0"

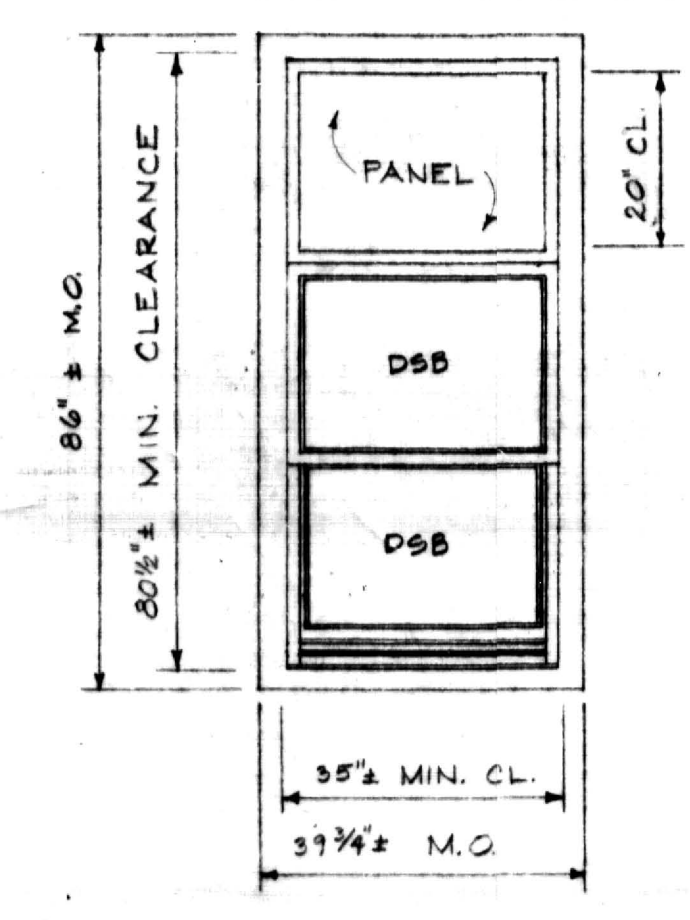
TYPE A

6-1 THUS
NOTE: 2 OF THESE W/ WIRE GL.
SEE NORTH ELEVATION



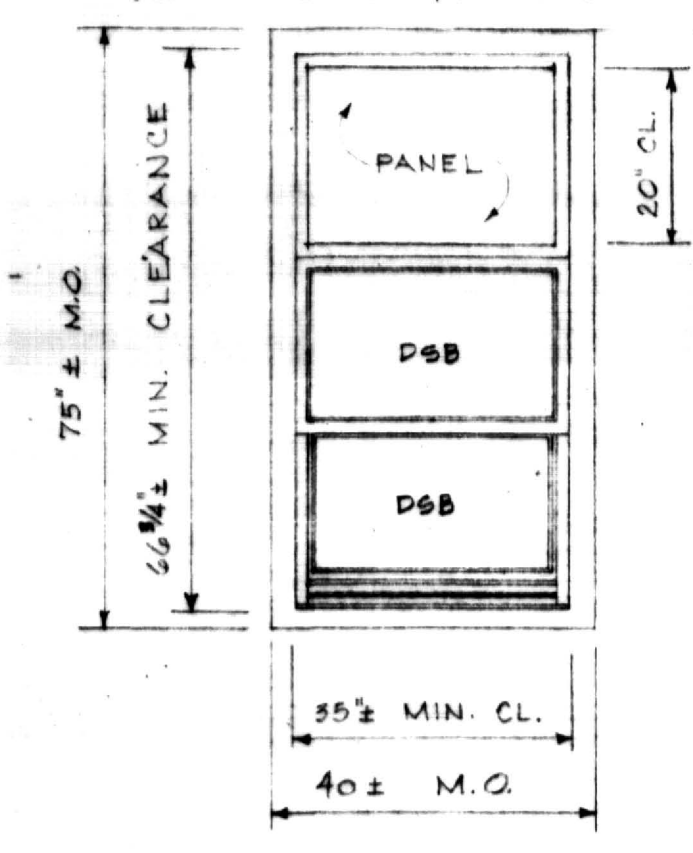
TYPE B

1-1 THUS
NOTE: 2 OF THESE W/ WIRE GL.
SEE NORTH ELEVATION



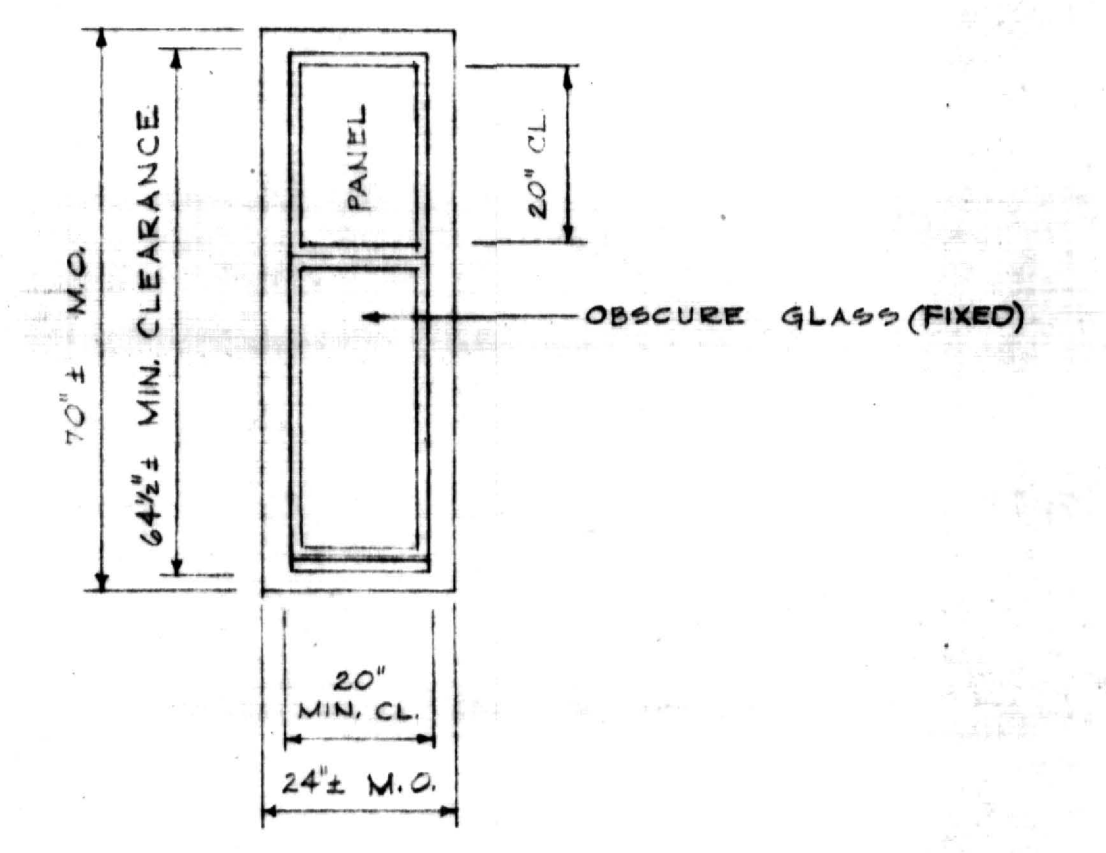
TYPE C

4-1 THUS
(REMOVE EXIST. FRAME BACK TO ORIGINAL)



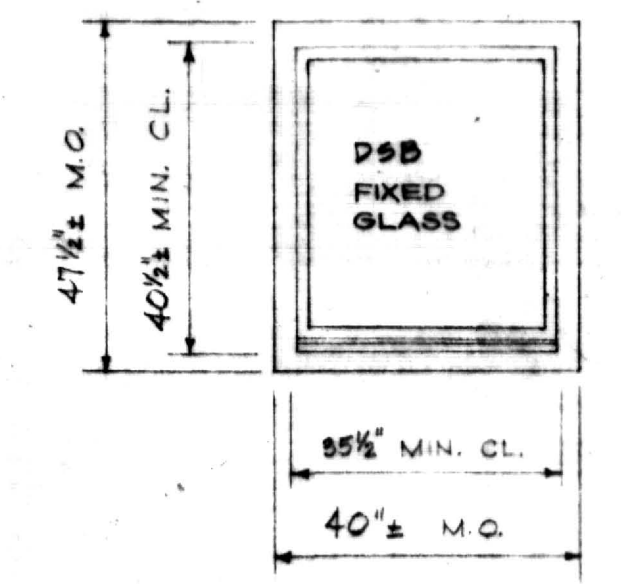
TYPE D

1-1 THUS



TYPE E

1-1 THUS



WINDOW TYPES
1/2" = 1'-0"

FRAZEE HALL WINDOW REPLACEMENT		
DRAWN BY MEC	NORTH ELEVATION WINDOW TYPES	DATE APRIL 6, 1976
TRACED BY	UNIVERSITY OF KENTUCKY DESIGN & CONSTRUCTION DIVISION LEXINGTON	SCALE AS SHOWN
CHECKED BY	COMMONWEALTH OF KENTUCKY DEPARTMENT OF FINANCE DIVISION OF ENGINEERING FRANKFORT KENTUCKY	SPEC. NO. DRAWING NO. 1 OF 4
APPROVED BY <i>[Signature]</i>	DATE 4/30/76	
APPROVED BY <i>[Signature]</i>	DATE 6-23-76	



U-8300

01140



EAST ELEVATION
FRAZEE HALL
 1/4" = 1'-0"



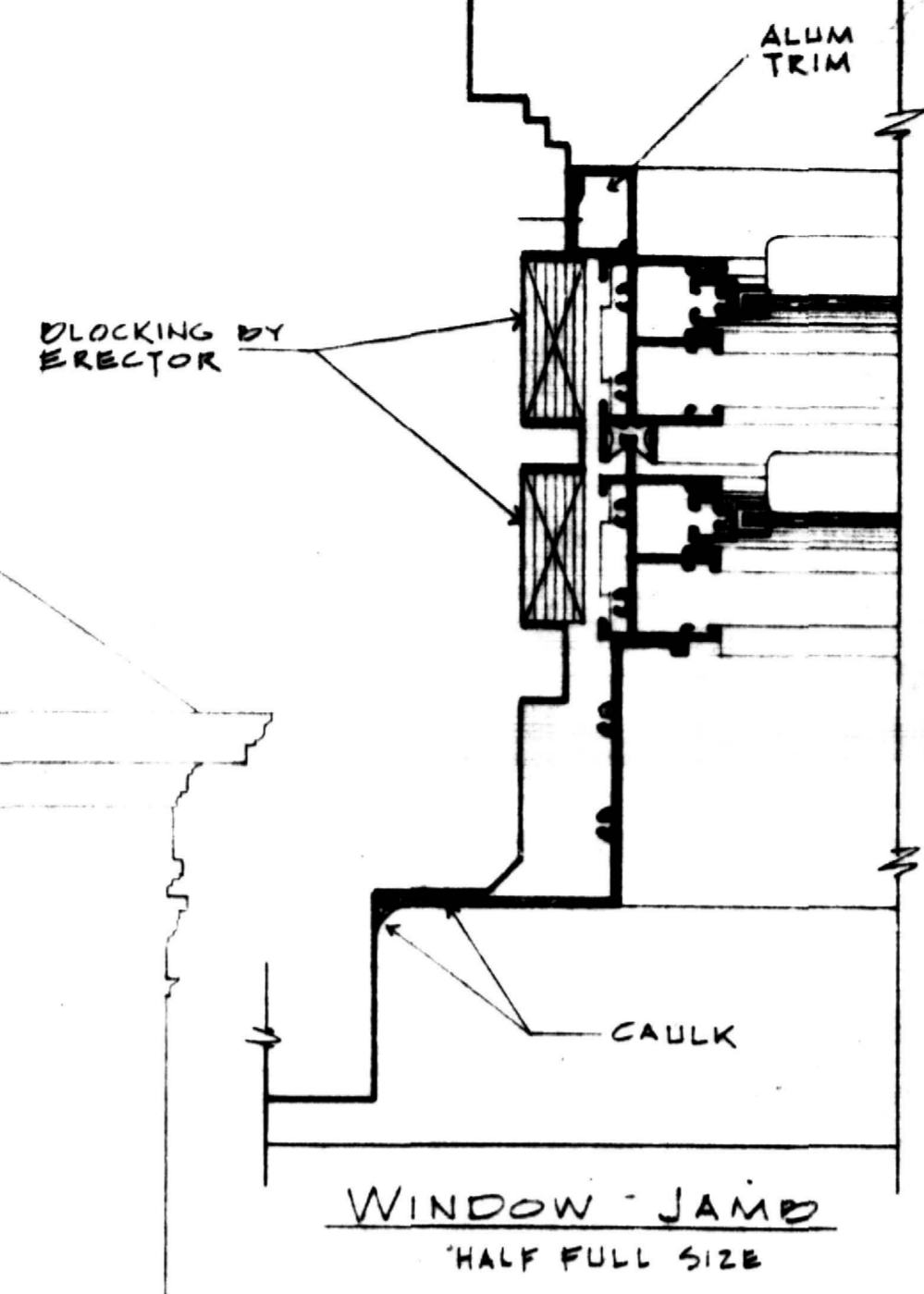
FRAZEE HALL WINDOW REPLACEMENT		
DRAWN BY MEC	EAST ELEVATION	DATE APRIL 6, 1976
TRACED BY	UNIVERSITY OF KENTUCKY DESIGN & CONSTRUCTION DIVISION LEXINGTON	SCALE AS SHOWN SHEET NO.
CHECKED BY	COMMONWEALTH OF KENTUCKY DEPARTMENT OF FINANCE DIVISION OF ENGINEERING TRANSPORTATION KENTUCKY	FIGURE NO. 2 OF 2
APPROVED BY <i>J. Robert H. Schell</i>	DATE 4/20/76	
APPROVED BY <i>J. Robert H. Schell</i>	DATE 6/23/76	

u-8301

00.141



**SOUTH ELEVATION
FRAZEE HALL**
1/4" = 1'-0"

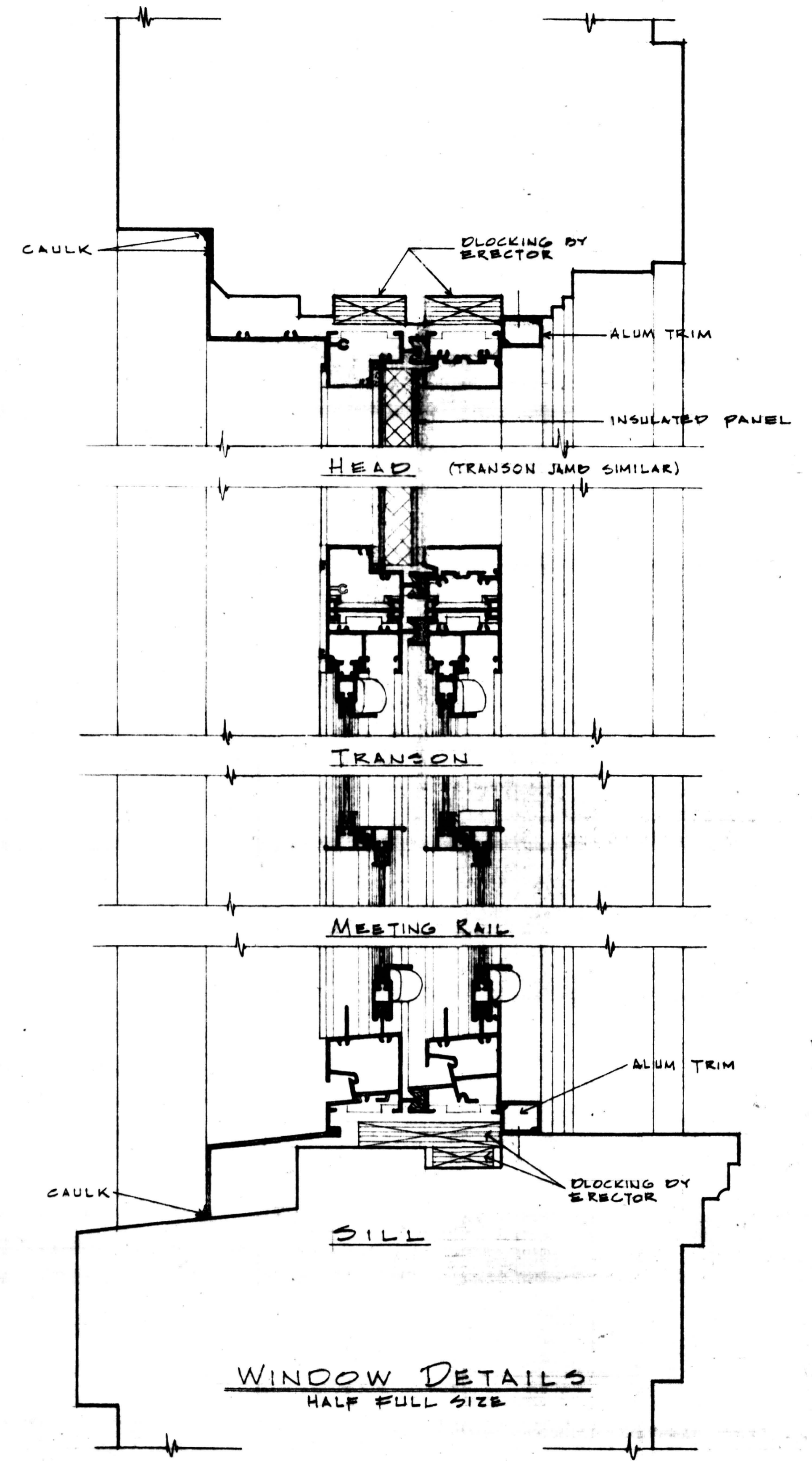


FIN. 3RD FL. EL. - 125'-9 1/2"

FIN. 2ND FL. EL. - 115'-2 1/2"

FIN. 1ST FL. EL. - 100'-0"

FIN. B'SMT. FL. EL. - 88'-0"



WINDOW DETAILS
HALF FULL SIZE



FRAZEE HALL WINDOW REPLACEMENT		
REC'D BY	SOUTH ELEVATION WINDOW DETAILS	DATE
DRAWN BY	UNIVERSITY OF KENTUCKY DESIGN & CONSTRUCTION	DATE
CHECKED BY	LENNIXON KENTUCKY	DATE
COMMONWEALTH OF KENTUCKY DEPARTMENT OF REVENUE DIVISION OF ENGINEERING PERMITS		
APPROVED BY	<i>[Signature]</i>	DATE
APPROVED BY	<i>[Signature]</i>	DATE

6-8302

00142



WEST ELEVATION
FRAZEE HALL
 1/4" = 1'-0"



FRAZEE HALL WINDOW REPLACEMENT		
DRAWN BY MEC	WEST ELEVATION	DATE APRIL 6 1976
TRACES BY	UNIVERSITY OF KENTUCKY DESIGN & CONSTRUCTION DIVISION LEXINGTON KENTUCKY	SCALE AS SHOWN SPEC 40
CHECKED BY	COMMONWEALTH OF KENTUCKY DEPARTMENT OF FINANCE DIVISION OF ENGINEERING FRANKFORT KENTUCKY	DRAWING NO. 4 OF 4
APPROVED BY <i>C. Marshall</i>	DATE 4/30/76	
APPROVED BY <i>Robert W. Schae</i>	DATE 6-23-76	

U-8303