



?

OK: FILE HSRB

University of Kentucky  
Capital Project Management Division  
222 Peterson Service Building  
Lexington, Kentucky 40506-0005  
Ph. 859-257-5911  
FAX 859-323-1017

# TRANSMITTAL

TO: Nate Whitaker

DATE: 12/5/2003

COMPANY:  
UK MCPPD

REFERENCE:  
UK Project #2199.0  
HSRB BL3 Lab Lighting Upgrade

**WE ARE SENDING YOU**

- Shop drawings
- Copy of letter

- Attached
- Prints
- Change order

- Under separate cover via \_\_\_\_\_ the following items:
- Plans
- Samples
- Specifications
- Other Items: \_\_\_\_\_

COPIES	DATE	DESCRIPTION
7	12/5/2003	Square D- Mini Power Zone
7	"	Square D- EDB Circuit Breaker

**THESE ARE TRANSMITTED as checked below:**

- For approval
- For your use
- As requested
- For review and comment
- For Bids Due

- Approved as submitted
- Approved as noted
- Returned for corrections
- Prints returned after loan to us
- Other items: \_\_\_\_\_

- Resubmit \_\_\_\_\_ copies for approval
- Submit \_\_\_\_\_ copies for distribution
- Return \_\_\_\_\_ corrected prints

**REMARKS:**

These submittals are for the project to place the lighting in the BL 3 Lab on the 4th floor of HSRB on an emergency circuit.

COPY TO: 2199.0 file

\_\_\_\_\_  
\_\_\_\_\_

SIGNED:

*Scott Miller*

*PRE-REVIEW*

*FILE: HSRB  
BL-3*



**University of Kentucky**  
**Capital Project Management Division**  
222 Peterson Service Building  
Lexington, Kentucky 40506-0005  
Ph. 859-257-5911  
FAX 859-323-1017

# TRANSMITTAL

**TO:** Leo Foster

**DATE:** 3/1/2004

**COMPANY:**  
UK MCPPD

**REFERENCE:**  
HSRB BL3 Lab Electrical Upgrades  
UK Project #2199.0

**WE ARE SENDING YOU**

- Shop drawings
- Copy of letter

- Attached
- Prints
- Change order

- Under separate cover via \_\_\_\_\_ the following items:
- Plans
- Samples
- Specifications
- Other Items: \_\_\_\_\_

COPIES	DATE	DESCRIPTION
7	3/1/2004	Breaker for Main Distrubution Panel
7	"	480/277V Panel
7	"	Transformer
7	"	120/208V Panel

**THESE ARE TRANSMITTED as checked below:**

- For approval
- For your use
- As requested
- For review and comment
- For Bids Due

- Approved as submitted
- Approved as noted
- Returned for corrections
- Prints returned after loan to us
- Other items: \_\_\_\_\_

- Resubmit \_\_\_ copies for approval
- Submit \_\_\_ copies for distribution
- Return \_\_\_ corrected prints

**REMARKS:**  
Please review and approve so we can proceed with ordering of equipment. Thanks.

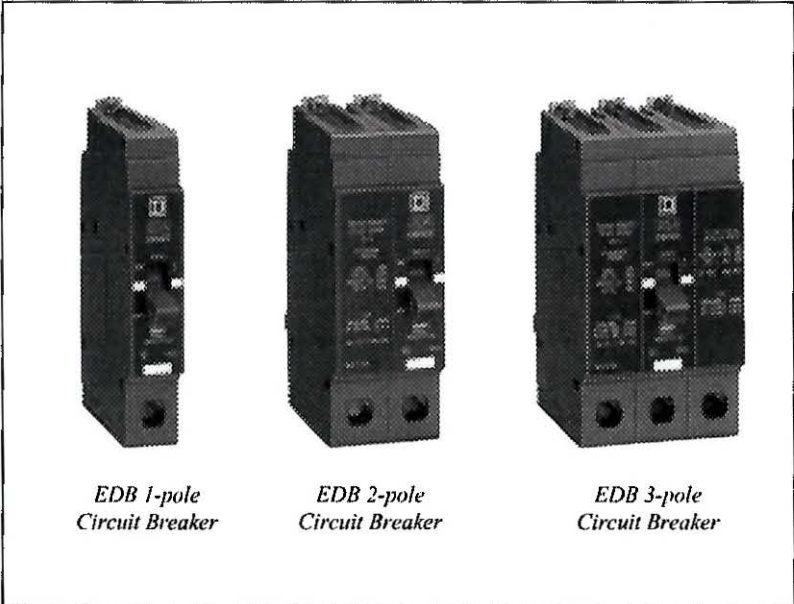
*APPROVED 3/2/04*

**COPY TO:** 2199.0 file

**SIGNED:** *Scott Miller*

# Class 0515

## 480Y/277 Vac EDB, EGB and EJB Lighting Panelboard Circuit Breakers



### EDB, EGB and EJB 125A Frame Lighting Panelboard Circuit Breakers

- 1-, 2- and 3-pole bolt-on construction for use in Square D NF panelboards
- Current ratings: 15–125A
- 480Y/277 Vac
- Optional factory-installed electrical accessories include; 120 Vac shunt trip, 1A/IB auxiliary switch and normally open alarm switch
- Optional handle padlock attachment
- Optional copper and compression lugs
- VISI-TRIP® feature
- HACR rated (15–125A, 1-, 2-, and 3-pole)
- Tested to UL 489 bus condition test
- UL Listed — file #E84967
- CSA Certified — file #LR92886
- NOM 117 Certified
- In compliance with Federal Specification W-C-375B/GEN

#### Ampere Interrupting Ratings

Interrupting Rating Level	@ 240V	@ 480Y/277V
D	25kA	18kA
G	65kA	35kA
J	100kA	65kA

Interrupting Rating Level	Ampere Rating	Catalog Number			Standard Al Lug Wire Range
		1-pole 277 Vac	2-pole◆ 480Y/277 Vac	3-pole 480Y/277 Vac	
D	15	EDB14015▲●	EDB24015▲	EDB34015▲	#12 – #6 AWG Al or #14 – #6 AWG Cu
	20	EDB14020▲●	EDB24020▲	EDB34020▲	
	25	EDB14025▲	EDB24025▲	EDB34025▲	
	30	EDB14030▲	EDB24030▲	EDB34030▲	
	35	EDB14035	EDB24035	EDB34035	
	40	EDB14040	EDB24040	EDB34040	#12 – #2/0 AWG Al or #14 – #2/0 AWG Cu
	45	EDB14045	EDB24045	EDB34045	
	50	EDB14050	EDB24050	EDB34050	
	60	EDB14060	EDB24060	EDB34060	
	70	EDB14070	EDB24070	EDB34070	
	80	—	EDB24080	EDB34080	
	90	—	EDB24090	EDB34090	
	100	—	EDB24100	EDB34100	
	110	—	EDB24110	EDB34110	
	125	—	EDB24125	EDB34125	

▲ UL Listed as HID (High Intensity Discharge) rated  
 ● UL Listed as SWD (Switching Duty) rated  
 ◆ UL Listed for use on 240 V corner-grounded delta systems (grounded B phase)

Continued on next page



Square D circuit breakers are manufactured in a facility that is Quality Systems Registered by Underwriters Laboratories to ISO 9001.

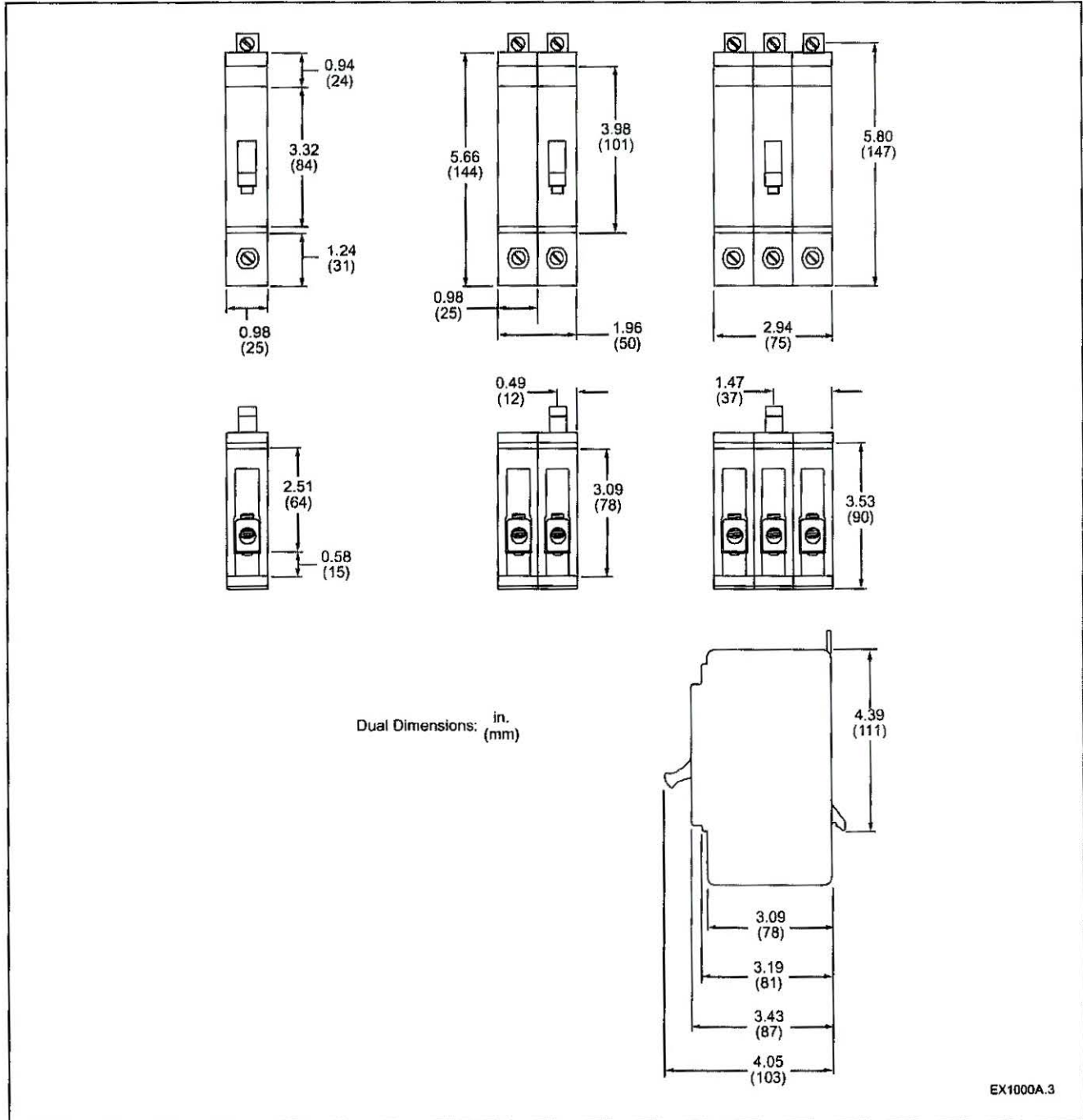



SQUARE D  
GROUPE SCHNEIDER

**Class 0515**

**480Y/277 Vac EDB, EGB and EJB  
Lighting Panelboard Circuit Breakers**

EDB, EGB and EJB  
Circuit Breaker Dimensions



Square D, , and VISI-TRIP, are registered trademarks of Square D Company.

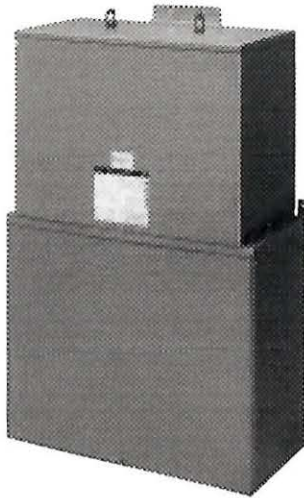
VERSAtile is a trademark of Square D Company.

VERSA-CRIMP is a trademark of Hubbell Incorporated.

Order No. 0500HO9602R11/97



## Special Purpose Transformers MINI POWER-ZONE® Power Supply



MINI POWER-ZONE Power Supply

### Application

The MINI POWER-ZONE® packaged power supply is the low voltage (600 volts and below) version of our POWER-ZONE® package unit substation. The MINI POWER-ZONE provides a compact power supply for small loads and is suitable for service equipment. This unit is a space-saving substitute for an individual main breaker, transformer, and secondary distribution panel that are connected via conduit. Proper coordination of primary breaker and transformer is assured to prevent nuisance tripping on power-on inrush. The MINI POWER-ZONE power supply is UL Listed for both indoor and outdoor use.

### Features

The MINI POWER-ZONE package includes these features:

- A transformer with a maximum full load temperature rise of 115°C using a 180°C insulation system. The core and coil is encapsulated in an epoxy resin-sand combination.
- A circuit breaker section enclosed in a weather-resistant, steel enclosure.
- Enclosures use an electrostatically applied, ANSI 49 color, powder coating to protect both the transformer and panel board section and to provide extra corrosion resistance. This construction provides an exceptionally durable unit for use in wet, dirty, or dusty applications.
- Unique two-part construction uses removable transformers that can be replaced without disturbing external panelboard wiring. All sizes are furnished from Square D warehouse stock, complete with the transformer main primary and main secondary circuit breakers sized in accordance with National Electrical Code requirements.
- Accommodates standard Square D plug-on branch circuit breakers and QUIK-GARD® ground fault circuit breakers.
- Shunt trip capability on the primary breaker is available by special order if local code requires remote tripping when the package is used as service equipment.
- Electrostatic shield and bolt-on panel are available by special order.

### 480 Volts Primary 120/240 Volts Secondary 60 Hz

#### Single Phase

kVA	Catalog Number	Dimensions					
		Height		Width		Depth	
		IN	mm	IN	mm	IN	mm
5	<b>MPZ5S40F</b>	32.7	831	12.0	305	11.9	303
7.5	<b>MPZ7S40F</b>	32.7	831	12.0	305	11.9	303
10	<b>MPZ10S40F</b>	32.7	831	12.0	305	11.9	303
15	<b>MPZ15S40F</b>	42.9	1090	17.4	442	13.5	343
25	<b>MPZ25S40F</b>	42.9	1090	17.4	442	13.5	343

### 480 Volts Delta Primary 208Y/120 Volts Secondary 60 Hz

#### Three Phase

15	<b>MPZ15T2F</b>	44.6	1133	27.4	696	13.6	345
22.5	<b>MPZ22T2F</b>	44.6	1133	27.4	696	13.6	345
30	<b>MPZ30T2F</b>	44.6	1133	27.4	696	13.6	345

### Single Phase

#### 480 Volts Primary 120/240 Volts Secondary 60 Hz

kVA	Catalog Number	Wt. Lbs.	Primary Main Circuit Breaker	Feeder Breakers		
				Secondary Main Circuit Breaker	Max. No. 1 Pole or 2 Pole	Max. Amperes
5	<b>MPZ5S40F</b>	175	FAL24020 20A	QO-230 30A	6 or 3	20
7.5	<b>MPZ7S40F</b>	200	FAL24030 30A	QO-240 40A	8 or 4	30
10	<b>MPZ10S40F</b>	215	FAL24040 40A	QO-260 60A	10 or 5	40
15	<b>MPZ15S40F</b>	350	FAL24060 60A	QO-280 80A	16 or 8	60
25	<b>MPZ25S40F</b>	425	FAL24100 100A	QO-2125 125A	24 or 12	100

### Three Phase

#### 480 Volts Delta Primary 208Y/120 Volts Secondary 60 Hz

kVA	Catalog Number	Wt. Lbs.	Primary Main Circuit Breaker	Feeder Breakers		
				Secondary Main Circuit Breaker	Max. No. 1 Pole or 2 pole	Max. Amperes
15	<b>MPZ15T2F</b>	710	FAL34040 40A	QO-360 60A	12 or 4	40
22.5	<b>MPZ22T2F</b>	725	FAL34070 70A	QO-380 80A	18 or 6	60
30	<b>MPZ30T2F</b>	755	FAL34090 90A	QO-3100 100A	24 or 8	80

Note: Boldface Catalog Numbers indicate in-stock transformers.



**HSRB BL-3 Electrical Upgrade Review 3/2/04**

Attending: Leo Foster, Fred Keeley, Matt Mueller, N8 Whitaker

**Electrical**

Approved Breaker, 2 panels and transformer.

\*\*\*Sent 6 copies of each back to Scott Miller

- APPROVED       REVISE AND RESUBMIT  
 APPROVED AS NOTED       SEE COMMENTS  
 NOT APPROVED

Reviewing is only for general conformance with the design concept of the project and general compliance with the information given in the contract documents. Any action shown is subject to the requirements of the drawings and specifications. The Contractor is responsible for dimensions to be confirmed and correlated at the job site; for information that pertains solely to the fabrication processes or the means, methods, techniques, sequences and procedure of construction, and for the coordination of the work of all trades.

University of Kentucky Medical Center  
Physical Plant Division

Date 3/2/04 *Joe Foster*

## THERMAL-MAGNETIC/MAGNETIC ONLY MOLDED CASE CIRCUIT BREAKERS 225/250A FRAME SELECTION DATA

### 225 AMPERE FRAME

### I-LINE® CIRCUIT BREAKERS

Ampere Rating	Two Pole★			Three Pole	
	Catalog No.	Catalog No.	Catalog No.	Catalog No.	Catalog No.
<b>Q2 †</b>					
	120/240Vac 10,000 AIC	240Vac 22,000 AIC	240Vac 42,000 AIC	240Vac 10,000 AIC	240Vac 22,000 AIC
100	Q221100	Q222100	Q2H22100	Q232100	Q232100H
110	Q221110	Q222110	Q2H22110	Q232110	Q232110H
125	Q221125	Q222125	Q2H22125	Q232125	Q232125H
150	Q221150	Q222150	Q2H22150	Q232150	Q232150H
175	Q221175	Q222175	Q2H22175	Q232175	Q232175H
200	Q221200	Q222200	Q2H22200	Q232200	Q232200H
225	Q221225	Q222225	Q2H22225	Q232225	Q232225H

† Accessories and replacement lugs are not available on the Q2 circuit breaker.

### I-LINE® CIRCUIT BREAKERS

Ampere Rating	AC Magnetic Trip Settings Amperes ▲	Two Pole★	Three Pole	Standard Lug Kit Wire Range
		Catalog No.	Catalog No.	

### 250 AMPERE FRAME

#### KA STANDARD INTERRUPTING

	Low	High	600Vac, 250Vdc	600Vac, 250Vdc	
70	350	700	KA26070	KA36070	AL250KA 1-#6-350 kcmil
80	400	800	KA26080	KA36080	
90	450	900	KA26090	KA36090	
100	500	1000	KA26100	KA36100	
110	550	1100	KA26110	KA36110	
125	625	1250	KA26125	KA36125	
150	750	1500	KA26150	KA36150	
175	875	1750	KA26175	KA36175	
200	1000	2000	KA26200	KA36200	
225	1125	2250	KA26225	KA36225	
250	1250	2500	KA26250	KA36250	

#### KH HIGH INTERRUPTING

	Low	High	600Vac, 250Vdc	600Vac, 250Vdc	
70	350	700	KH26070	KH36070	AL250KA 1-#6-350 kcmil
80	400	800	KH26080	KH36080	
90	450	900	KH26090	KH36090	
100	500	1000	KH26100	KH36100	
110	550	1100	KH26110	KH36110	
125	625	1250	KH26125	KH36125	
150	750	1500	KH26150	KH36150	
175	875	1750	KH26175	KH36175	
200	1000	2000	KH26200	KH36200	
225	1125	2250	KH26225	KH36225	
250	1250	2500	KH26250	KH36250	

#### KC EXTRA HIGH INTERRUPTING

	Low	High	480Vac	480Vac	
110	550	1100	KC24110	KC34110	AL250KA 1-#6-350 kcmil
125	625	1250	KC24125	KC34125	
150	750	1500	KC24150	KC34150	
175	875	1750	KC24175	KC34175	
200	1000	2000	KC24200	KC34200	AL250KI 1-1/0-350 kcmil
225	1125	2250	KC24225	KC34225	
250	1250	2500	KC24250	KC34250	

#### KI I-LIMITER® CURRENT LIMITING

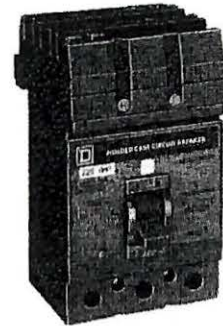
	Low	High	600Vac	600Vac	
110	550	1100	KI26110	KI36110	AL250KA 1-#6-350 kcmil
125	625	1250	KI26125	KI36125	
150	750	1500	KI26150	KI36150	
175	875	1750	KI26175	KI36175	
200	1000	2000	KI26200	KI36200	AL250KI 1-1/0-350 kcmil
225	1125	2250	KI26225	KI36225	
250	1250	2500	KI26250	KI36250	

▲ UL magnetic trip setting tolerances are ±25% (Low) and ±20% (High) from the nominal values shown.

★ Two pole circuit breaker catalog numbers are completed by adding required phase connection letters as a suffix to the catalog number.



KI  
TWO & THREE POLE  
4 1/2" MOUNTING HEIGHT  
110-250 AMPERES



Q2  
TWO & THREE POLE  
3" & 4 1/2" MOUNTING HEIGHT  
100-225 AMPERES



KA/KH/KC  
TWO & THREE POLE  
4 1/2" MOUNTING HEIGHT  
70-250 AMPERES





- APPROVED
- APPROVED AS NOTED
- NOT APPROVED
- REVISE AND RESUBMIT
- SEE COMMENTS

Reviewing is only for general conformance with the design concept of the project and general compliance with the information given in the contract documents. Any action shown is subject to the requirements of the drawings and specifications. The Contractor is responsible for dimensions to be confirmed and correlated at the job site; for information that pertains solely to the fabrication processes or the means, methods, techniques, sequences and procedure of construction; and for the coordination of the work of all trades.

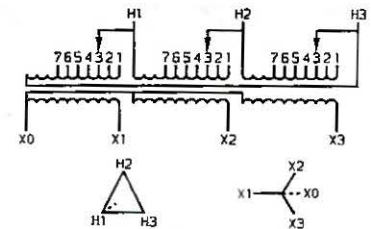
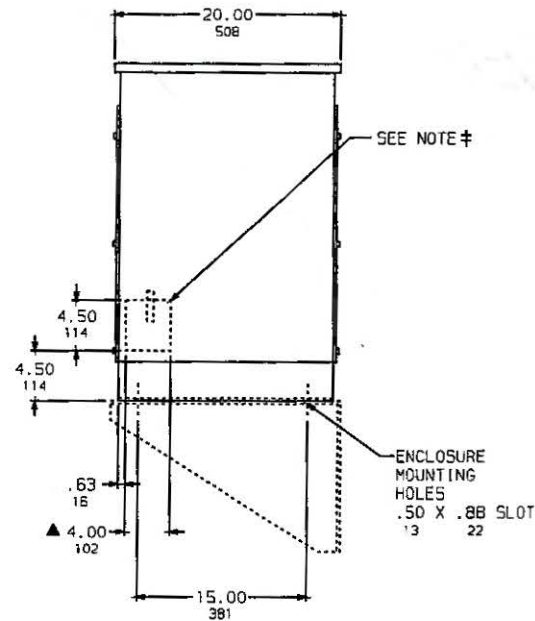
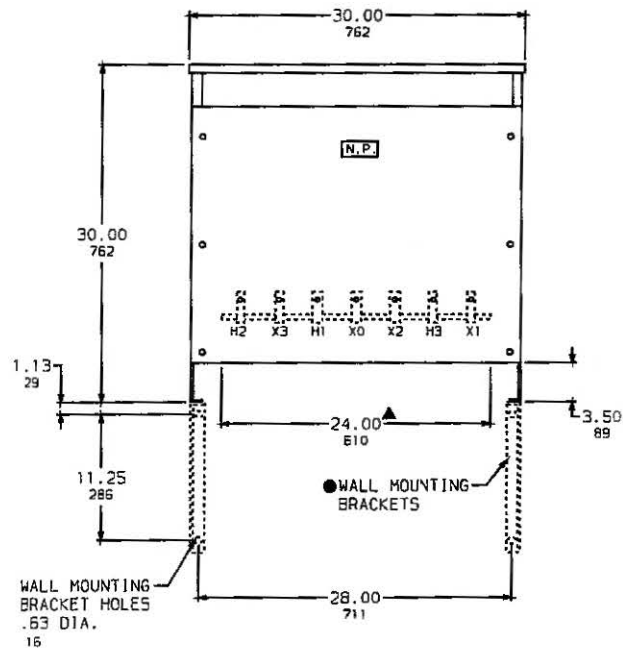
University of Kentucky Medical Center  
Physical Plant Division

3/2/04

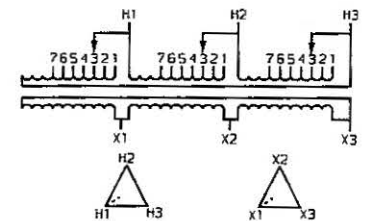


DRY-TYPE TRANSFORMER  
 75 KVA 3Ø 60HZ  
 480V DELTA PRIMARY  
 NEMA 2 ENCLOSURE TYPE

IN EACH PHASE CONNECT TO TAPS	
PRIMARY VOLTS	2-2.5% FCAN 4-2.5% FCBN
504	1
492	2
480	3
468	4
456	5
444	6
432	7



SECONDARY 208Y/120V 6 TAPS



SECONDARY 240V DELTA 6 TAPS

DUAL DIMENSIONS: INCHES  
MILLIMETERS

- NOTES: UL LISTED  
 150°C RISE ABOVE 40°C AMBIENT  
 MINIMUM CLEARANCE OF 6.00IN / 152MM BETWEEN VENT OPENINGS,  
 WALL OR OTHER OBSTRUCTION.  
 USE WEATHERSHIELD CATALOG NO. W5364  
 ● WALL MOUNTING BRACKET CATALOG NO. WMB363-364  
 ▲ SPACE AVAILABLE IN BOTTOM FOR CUSTOMERS CONDUIT ENTRANCE.  
 † SPACE AVAILABLE ON BOTH ENDS FOR CUSTOMERS CONDUIT.

KVA	CATALOG NUMBERS		GUAR. SOUND LEVEL IN DB'S	WGT LBS	AVG % Z
	208Y/120V SECONDARY	240V DELTA SECONDARY			
75	75T3H	75T6H	50	504	5.5

DRY-TYPE TRANSFORMER  
 75 KVA 3Ø 60HZ  
 480V DELTA PRIMARY  
 NEMA 2 ENCLOSURE TYPE

**SQUARE D COMPANY**

DWG. NO. 3538

- APPROVED
- APPROVED AS NOTED
- NOT APPROVED
- REVISE AND RESUBMIT
- SEE COMMENTS

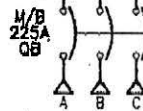
Reviewing is only for general conformance with the design concept of the project and general compliance with the information given in the contract documents. Any action shown is subject to the requirements of the drawings and specifications. The Contractor is responsible for dimensions to be confirmed and correlated at the job site; for information that pertains solely to the fabrication processes or the means, methods, techniques, sequences and procedure of construction; and for the coordination of the work of all trades.

University of Kentucky Medical Center  
Physical Plant Division

~~Date~~ 3/2/04 *[Signature]*

REV	DESCRIPTION	BY	DATE				
---	---	---	---	---	---	---	---

CKT NO	ACCESSORIES	TYPE	RATING AMP/P		RATING AMP/P	TYPE	ACCESSORIES	CKT NO
1		QOB	30/1		30/1	QOB		2
3		QOB	20/1		20/1	QOB		4
5		QOB	20/1		20/1	QOB		6
7		QOB	20/1		20/1	QOB		8
9		QOB	20/1		20/1	QOB		10
11		QOB	20/1		20/1	QOB		12
13		QOB	20/1		20/1	QOB		14
15		QOB	20/1		20/1	QOB		16
17		QOB	20/1		20/1	QOB		18
19		QOB	20/1		20/1	QOB		20
21		QOB	20/1		20/1	QOB		22
23		QOB	20/1		20/1	QOB		24
25		QOB	20/1		20/1	QOB		26
27		QOB	20/1		20/1	QOB		28
29		QOB	20/1		20/1	QOB		30
31		QOB	20/1		20/1	QOB		32
33		QOB	20/1		20/1	QOB		34
35		QOB	20/1		20/1	QOB		36
37		QOB	20/1		20/1	QOB		38
39		QOB	20/1		20/1	QOB		40
41		QOB	20/1		20/1	QOB		42



### PHYSICAL DATA

- o ENCLOSURE: TYPE 1  
 SURFACE WITH DOOR FRONT  
 FRONT CAT#: MHC50S  
 BOX CAT#: MH50  
 DIMENSIONS:  
 50"H X 20"W X 5.75"D  
 WIRE BENDING SPACE:  
 TOP 5.0"  
 BOTTOM 12.1"  
 SIDE 6.1"  
 PBA 507A
- o BUSSING: COPPER BUS  
 STANDARD PLATING
- o SPECIAL:  
 COPPER GROUND BAR

### ELECTRICAL DATA

- o SYSTEM: 208Y/120 VAC 3PH 4W 60 HZ  
 10,000 AMPS SYMS. 5CCR
- o MAIN: MAIN BREAKER: QB 225A  
 BOTTOM FEED  
 10K AIC  
 INCOMING CONDUCTOR(S) PER NEC:  
 (1)#4-300 kcmil Al/Cu
- o BRANCH MOUNTING TYPE: BOLT-ON  
 BRANCH SUMMATION  
 2-30A/1P QOB      40-20A/1P QOB

JOB NAME:	UNIVERSITY OF KENTUCKY	EQUIPMENT DESIGNATION:	
JOB LOCATION:	LEXINGTON KY	EQUIPMENT TYPE:	NQOD
DRAWN BY:	(Q2C)	DRAWING TYPE:	ONE LINE DIAGRAM
ENGR:	---		
DATE:	FEBRUARY 25 2004		
DRAWING STATUS:	QUOTE NOT FOR CONSTRUCTION	DWG# 018886613	PG 1 OF 1 REV 000

- APPROVED
- APPROVED AS NOTED
- NOT APPROVED
- REVISE AND RESUBMIT
- SEE COMMENTS

Reviewing is only for general conformance with the design concept of the project and general compliance with the information given in the contract documents. Any action shown is subject to the requirements of the drawings and specifications. The Contractor is responsible for dimensions to be confirmed and correlated at the job site; for information that pertains solely to the fabrication processes or the means, methods, techniques, sequences and procedure of construction; and for the coordination of the work of all trades.

University of Kentucky Medical Center  
Physical Plant Division

3/2/04 *Joe Foster*

REV	DESCRIPTION	BY	DATE				
-	----	---	---/---/---	---	---	---	---

CKT NO	ACCESSORIES	TYPE	RATING AMP/P		RATING AMP/P	TYPE	ACCESSORIES	CKT NO
1					20/1	EDB	PREPARED SPACE	2
3		EDB	110/3		20/1	EDB	PREPARED SPACE	4
5					20/1	EDB	PREPARED SPACE	6
7	PREPARED SPACE	EDB	20/1		20/1	EDB	PREPARED SPACE	8
9	PREPARED SPACE	EDB	20/1		20/1	EDB	PREPARED SPACE	10
11	PREPARED SPACE	EDB	20/1		20/1	EDB	PREPARED SPACE	12
13	PREPARED SPACE	EDB	20/1		20/1	EDB	PREPARED SPACE	14
15	PREPARED SPACE	EDB	20/1		20/1	EDB	PREPARED SPACE	16
17	PREPARED SPACE	EDB	20/1		20/1	EDB	PREPARED SPACE	18
19	PREPARED SPACE	EDB	20/1		20/1	EDB	PREPARED SPACE	20
21	PREPARED SPACE	EDB	20/1		20/1	EDB	PREPARED SPACE	22
23	PREPARED SPACE	EDB	20/1		20/1	EDB	PREPARED SPACE	24
25	PREPARED SPACE	EDB	20/1		20/1	EDB	PREPARED SPACE	26
27	PREPARED SPACE	EDB	20/1		20/1	EDB	PREPARED SPACE	28
29	PREPARED SPACE	EDB	20/1		20/1	EDB	PREPARED SPACE	30

**PHYSICAL DATA**

- o ENCLOSURE: TYPE 1  
 SURFACE WITH DOOR FRONT  
 FRONT CAT#: NC385  
 BOX CAT#: MH38  
 DIMENSIONS:  
 38"H X 20"W X 5.75"D  
 WIRE BENDING SPACE:  
 TOP 5.0"  
 BOTTOM 12.7"  
 SIDE 4.1"  
 PBA 550
- o BUSSING: COPPER BUS  
 STANDARD PLATING
- o SPECIAL:  
 COPPER GROUND BAR

**ELECTRICAL DATA**

- o SYSTEM: 480Y/277 VAC 3PH 4W 60 HZ  
 14,000 AMPS SYMS. SCCR
- o MAIN: MAIN LUGS: 250A  
 BOTTOM FEED  
 14K AIC  
 INCOMING CONDUCTOR(S) PER NEC:  
 (1)#6-350 kcmil
- o BRANCH MOUNTING TYPE: BOLT-ON  
 ----- BRANCH SUMMATION -----  
 1-110A/3P EDB                      27-20A/1P-PS EDB

JOB NAME:	UNIVERSITY OF KENTUCKY	EQUIPMENT DESIGNATION:	
JOB LOCATION:	LEXINGTON KY	EQUIPMENT TYPE:	NF
DRAWN BY:	(Q2C)	DRAWING TYPE:	ONE LINE DIAGRAM
ENGR:	---		
DATE:	FEBRUARY 25 2004		
DRAWING STATUS:	QUOTE NOT FOR CONSTRUCTION		
DWG# 018886613		PG 1	OF 1
		REV 00	