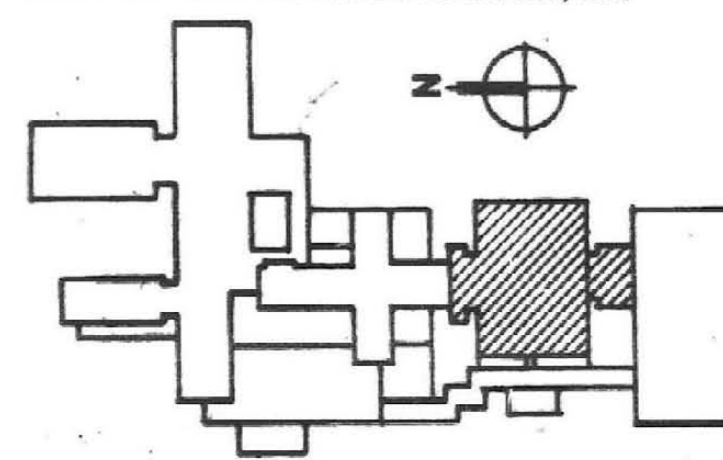


- CODED NOTES: DRAWING FP-6
- 1 FIRE HOSE CABINET.
 - 2 FIRE HOSE CABINET (INSTALL ON UNISTRUT)
 - 3 4" STANDPIPE DOWN.
 - 4 4" STANDPIPE UP AND DOWN.
 - 5 2" DRAIN LINE UP AND DOWN.
 - 6 FLOW SWITCH.
 - 7 SUPERVISED VALVE.
 - 8 CAP FOR FUTURE CONNECTION.
 - 9 LOCATED ON CEILING OF 2ND FLOOR.
 - 10 4" STANDPIPE UP.
 - 11 4" FIRE PROTECTION LINE. SEE SUPPLEMENTAL DRAWING P-24.

RECORD DRAWINGS DATE 10-22-93
 These record drawings have been prepared, in part, on the basis of information compiled and furnished by others. The Engineer will not be responsible for any errors or omissions which have been incorporated into this document as a result.



Third Floor Plan
 10/22/93

SUPPLEMENTAL DRAWING

ALBERT B. CHANDLER MEDICAL CENTER UNIVERSITY OF KENTUCKY HOSPITAL EXPANSION & RENOVATION

SUPPLEMENTAL DRAWING
 HOSPITAL EXPANSION & RENOVATION
 A.B. CHANDLER MEDICAL CENTER
 PROJECT NO. 304.1
 BID PACKAGE #2

OMNIVIEW Joint Venture Architects
 In Association with Hellmuth, Obata, & Kassabaum
 One Park Plaza
 2885 Harrodsburg Road, Lexington, KY 40524 PH 502 253 3045
 Chertown, MD 21615 PH 410 326 6225

STAGGS & FISHER CONSULTING ENGINEERS
 307 S. MAINLAND AVE., COVINGTON, KY 40303
 PROJECT 10201 MAIN-1128



University of Kentucky
 Design & Construction
 Approval

Director
 Date: 9/13/98
 Drawn by: [Signature]
 Check by: [Signature]
 Revisions:

FP-6