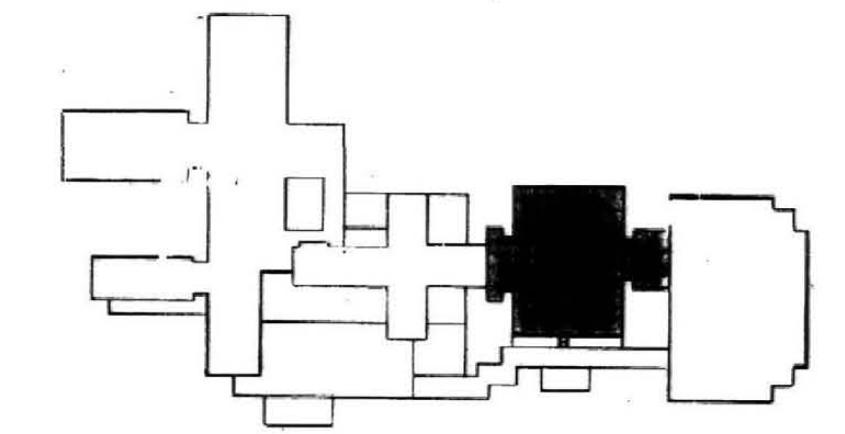


FP-8-BP
4-BP
4-RN
4-FW
1-GRID
FP-5



KEY PLAN

RECORD DRAWINGS DATE 10-22-13
 These record drawings have been prepared, in part, on the basis of information compiled and furnished by others. The Engineer will not be responsible for any errors or omissions which have been incorporated into this document as a result.
 STAGGS & FISHER CONSULTING ENGINEERS, INC.

ALBERT B. CHANDLER MEDICAL CENTER UNIVERSITY OF KENTUCKY HOSPITAL EXPANSION & RENOVATION

FOURTH LEVEL PLAN

HOSPITAL EXPANSION & RENOVATION
 A. B. CHANDLER MEDICAL CENTER
 PROJECT NO. 304.1

University of Kentucky
 Design & Construction
 Approval
[Signature]
 Director

Date: NOV 14
 Drawn by: _____
 Check by: _____
 Revisions: _____

FP-5

OMNI/CMW Joint Venture Architects
 In Association with Hellmuth, Obata, & Kassabaum
 Hellmuth, Obata, & Kassabaum, Inc.
 M-E-P Engineering
 100 North Breese, St. Louis, Mo. 63102 Ph 314-451-2000
 2305 Hamburgh Road Lexington, KY 40504 Ph 606-252-3045
 308 E Broadway, Lexington, KY 40508 Ph 606-254-6223

OF KENTUCKY
 WORLD
 WARE LAND
 12.856
 2.516
 1000