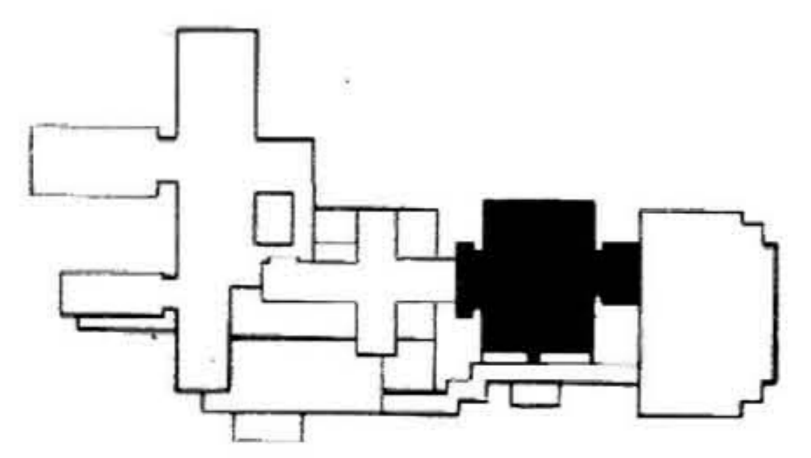


NOTE: CRINKLER CONTR SHALL COORDINATE ALL PIPING WITH ALL AFFECTED TRADES BEFORE STARTING WORK.



KEY PLAN

RECORD DRAWINGS DATE: 10-22-99
 These record drawings have been prepared, in part, on the basis of information compiled and furnished by others. The Engineer will not be responsible for any errors or omissions which have been incorporated into this document as a result.
 STAGGS & FISHER CONSULTING ENGINEERS, INC.

FP-4	3-10-99
3-FW	3-10-99
1-GRID	3-10-99
FP-4	3-10-99

ALBERT B. CHANDLER MEDICAL CENTER UNIVERSITY OF KENTUCKY HOSPITAL EXPANSION & RENOVATION

THIRD LEVEL PLAN

HOSPITAL EXPANSION & RENOVATION
 A. B. CHANDLER MEDICAL CENTER
 PROJECT NO. 304.1

OMNI/CW Joint Venture Architects
 In Association with Hellmuth, Obata, & Kassabaum

Hellmuth, Obata, & Kassabaum, Inc.
 M-E-P Engineering



University of Kentucky
 Design & Construction
 Approval
 Director
 Date
 Drawn by
 Check by
 Revisions
 Scale: 1/8" = 1'-0"
 11 1/2" x 17 1/2"
FP-4
 HOSPITAL ADDRESS