



Hellmuth, Obata, & Kassabaum, Inc.
M-E-P Engineering
 100 Harris Avenue, St. Louis, Mo. 63102
 Ph: 314-491-9000

OMNI/CMW Joint Venture Architects
 In Association with Hellmuth, Obata, & Kassabaum
 2055 Hamburg Road, Lexington, KY 40504 Ph: 606-223-3345
 306 S. Broadway, Lexington, KY 40508 Ph: 606-251-9523
 Omni Architects
 Chisman-War-Woodford

SECOND LEVEL PLAN
HOSPITAL EXPANSION & RENOVATION
A. B. CHANDLER MEDICAL CENTER
 PROJECT NO. 304.1
 BID PACKAGE 42

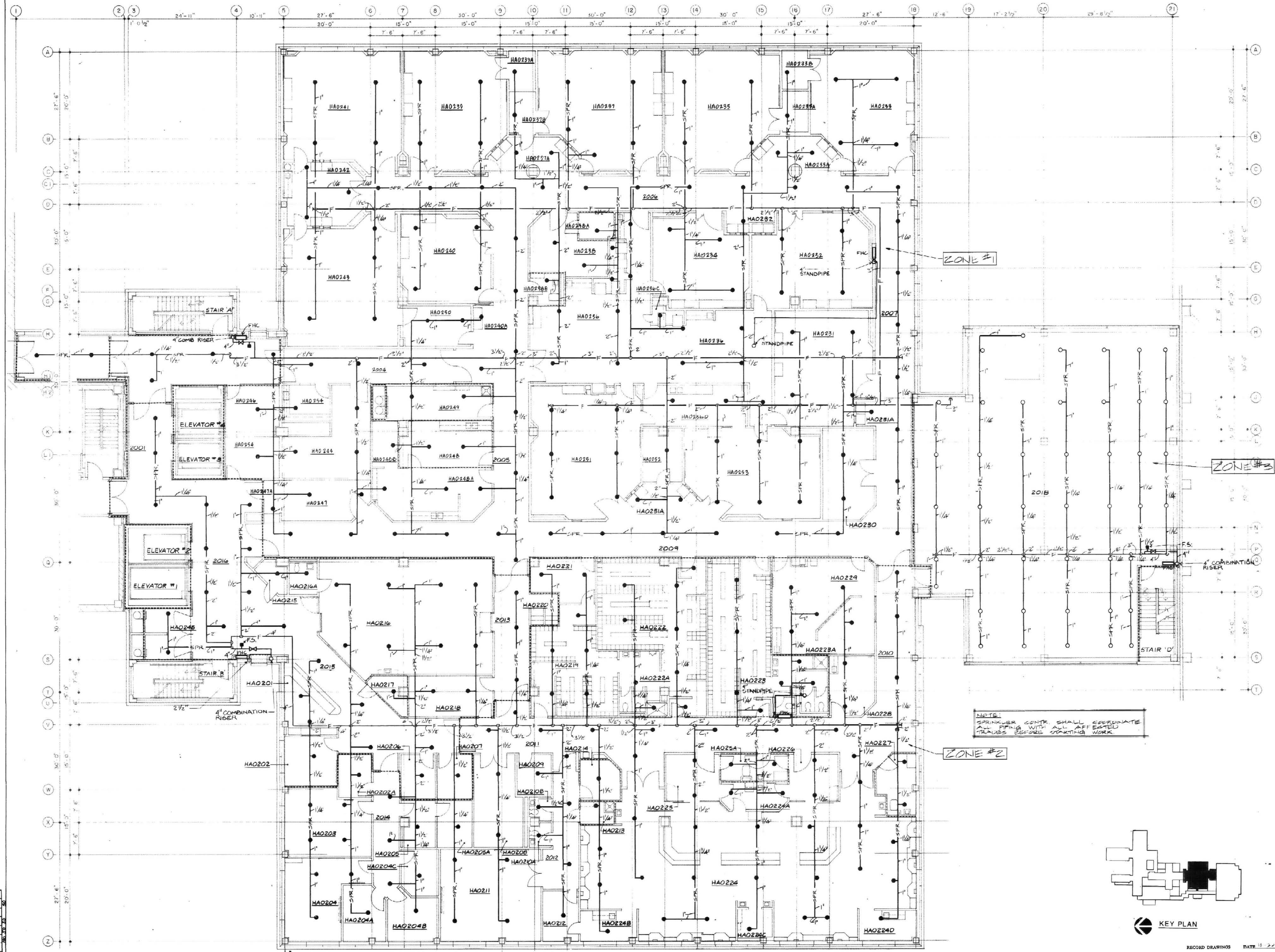
University of Kentucky
 Design & Construction
 Approval

 Director
 Feb 13, 1998

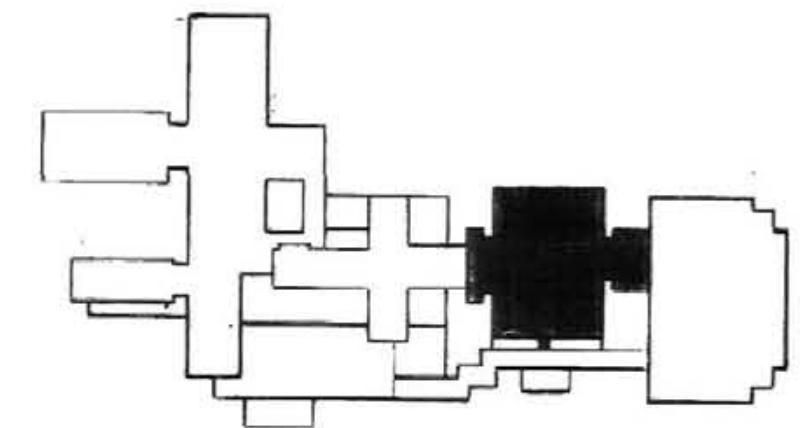
Date _____
 Drawn by _____
 Check by _____
 Revisions _____

FP-3
 HOSPITAL ADDITION

ALBERT B. CHANDLER MEDICAL CENTER UNIVERSITY OF KENTUCKY HOSPITAL EXPANSION & RENOVATION



NOTE: SPRINKLER CONTR. SHALL COORDINATE ALL PIPING WITH ALL AFFECTED TRADES BEFORE STARTING WORK.



KEY PLAN

RECORD DRAWINGS DATE 10 22 98

STAGOS & FISHER CONSULTING ENGINEERS, INC.

FP-3	2-BP	2-FW	1-GRID	FP-3	FP-3