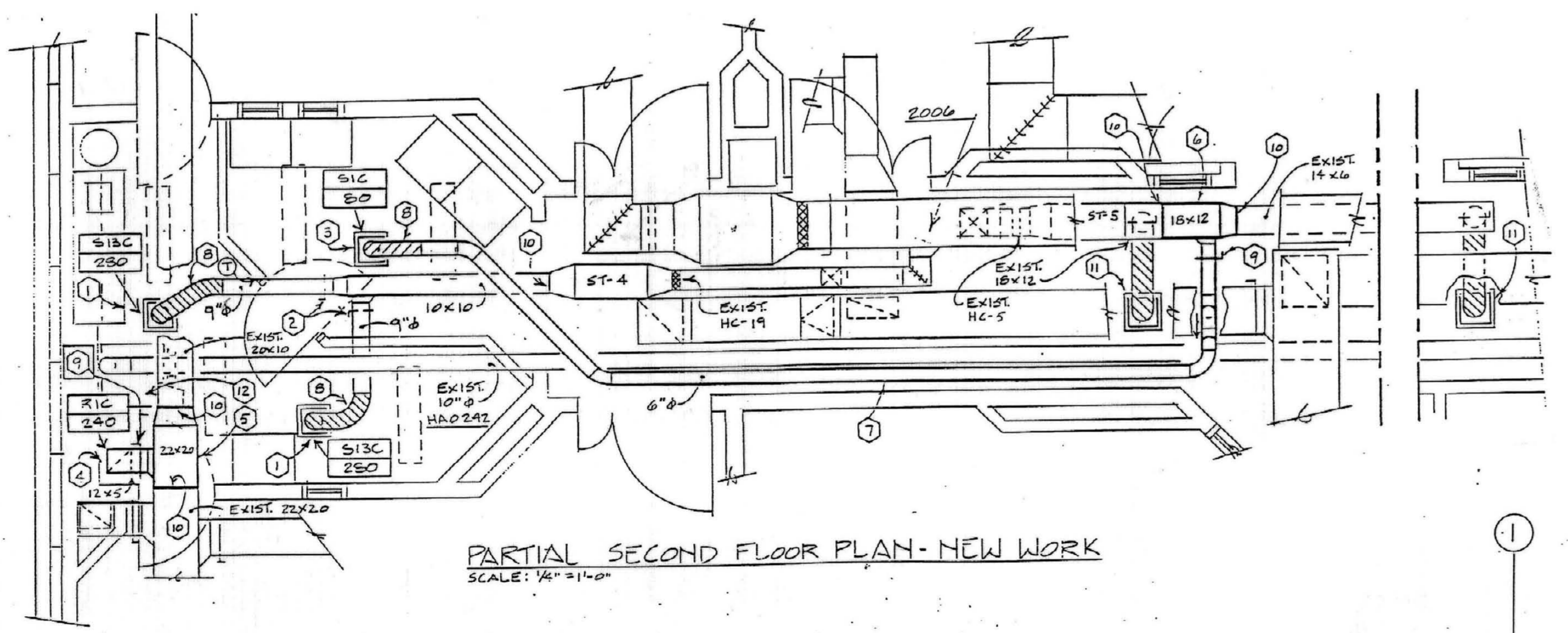
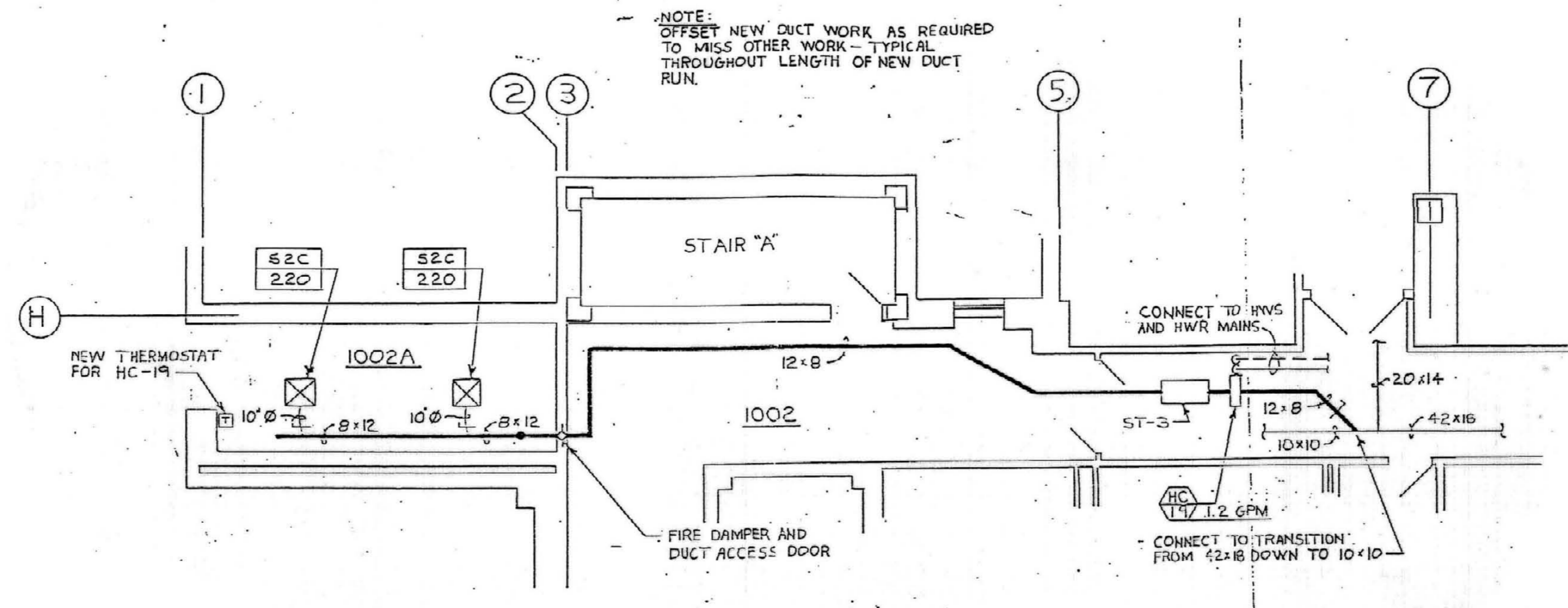


CODED NOTES:
 1. 10" HWS & HWV UP TO WALKER, SEE REVISION PARTIAL PLAN SHEET M-17 FOR CONTINUATION.
 C.P.R.#11
REVISED PARTIAL PLAN - SHEET M-22
 SCALE: 3/8" = 1'-0"



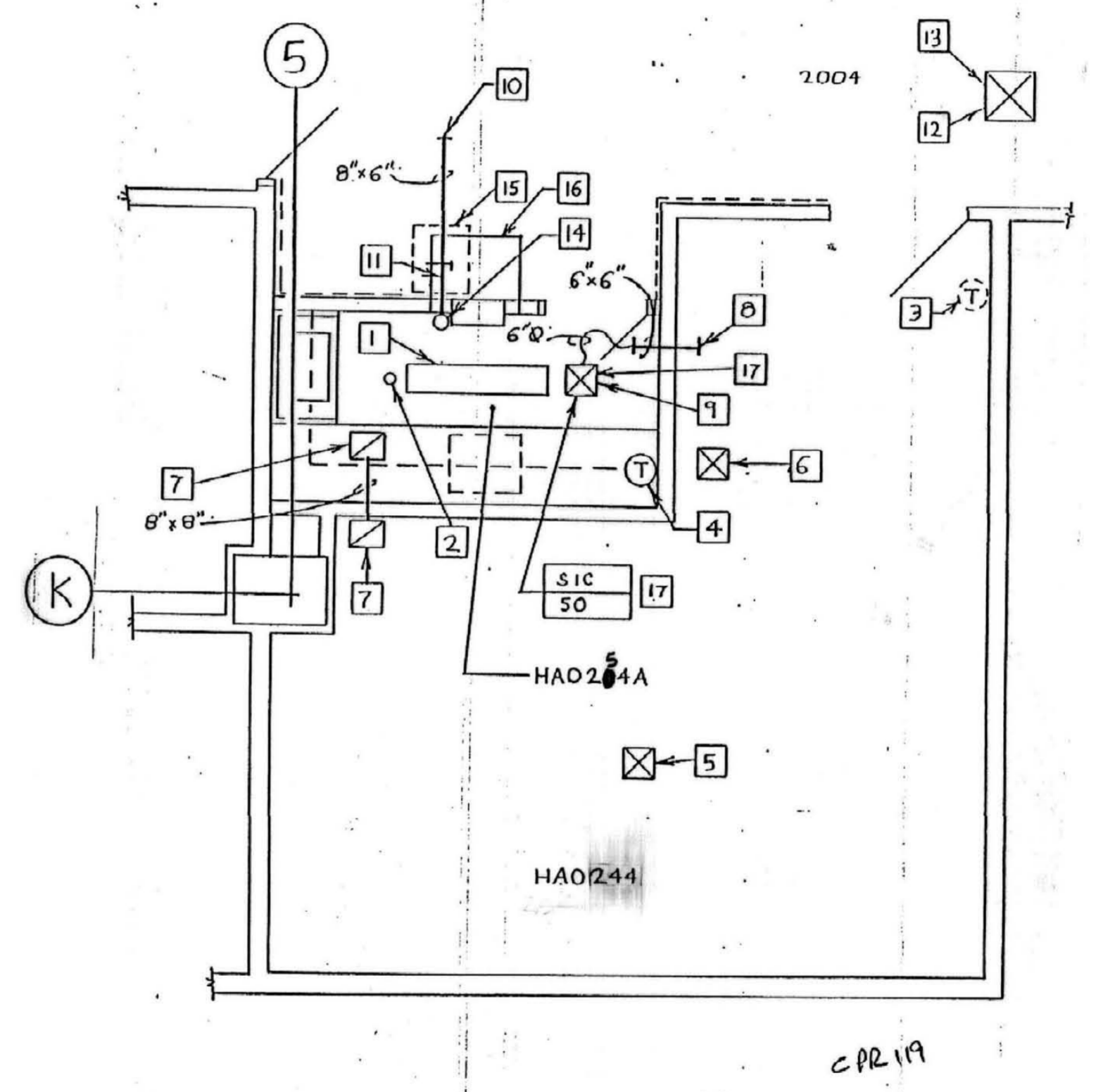
- CODED NOTES: NEW WORK - DRAWING 6 OF 7**
- NEW LOCATION OF EXISTING DIFFUSER.
 - NEW LOCATION OF EXISTING VOLUME DAMPER. SET DAMPER TO AIR VOLUME SHOWN ON DIFFUSER.
 - NEW DIFFUSER. SEE SCHEDULE ON DRAWING M-7 OF BID PACKAGE #2.
 - NEW RETURN GRILLE. SEE SCHEDULE ON DRAWING M-7 OF BID PACKAGE #2.
 - NEW SECTION OF RETURN AIR DUCT.
 - NEW 6" DIAMETER SUPPLY DUCT.
 - NEW FLEXIBLE DUCT.
 - NEW VOLUME DAMPER. SET DAMPER TO AIR VOLUME SHOWN ON AIR OUTLET.
 - CONNECT NEW DUCTWORK TO EXISTING DUCTWORK AT THIS POINT.
 - EXISTING DIFFUSER TO REMAIN. REBALANCE TO 300 CFM.
 - EXISTING STERILIZER EXHAUST AIR = 320

SUPPLEMENTAL DRAWING
 U.K. HOSPITAL EXPANSION



HVAC-FIRST FLOOR-REVISION ROOM# 1002A
 SCALE: 1/8" = 1'-0"

- HEATING, VENTILATING AND AIR CONDITIONING ITEMS**
- Refer to M-12, M-16, M-17 and M-22 -- All HVAC work shown on these plans shall be relocated to new 6th Floor. New 6th Floor elevation will be 1054.85', new 6th Floor Roof elevation will be 1069.74' and ceiling height will be 8'-6".
 - HVAC work at 3rd and 4th Floors will be provided by separate bid documents except for vertical extension of services as described herein.
 - Refer to Drawing M-22 -- All work shown in the Mechanical Room shall be relocated to the 6th Floor except for the following items:
 - Extend 8" LPS (30 psig) up to 6th Floor. Provide 4" valved connections at 3rd Floor and 4th Floor for future.
 - Extend 2" HPS connection (65 psig) up to 6th Floor and provide 2-inch valved connection at 3rd and 4th Floors for future connection.
 - Extend 4 inch LPS (10 psig) up to 6th Floor and provide 4" valved connection at 3rd and 4th Floor for future connection.
 - Extend 4" LPC up to 6th Floor and provide 3" valved connection at 3rd and 4th Floor for future connection.
 - Extend 8" CWS and CWR up to 6th Floor and provide 6" valved connections at 3rd and 4th Floor for future connections.
 - The 2-1/2" CWS and CWR shall remain at 3rd Level and shall be connected to 6-inch future connection at 3rd Floor. The 2-1/2" CWS and CWR serve fan coil units in the Transportation Tower.
 - Extend six-inch HWS and HWV up to 6th Floor and provide 3-inch valve connections at 3rd and 4th Floors for future connection.
 - Extend two-inch aviation fuel supply and return piping in containment pipe up to 6th Floor and route to Heliport.
 - Note 7 will be deleted as no extension of piping at 6th Level will be required.
 - Drawing M-12 -- 12" rd., 10 x 10 exhaust duct and 24 x 18 duct in chase alongside Elevator No. 4 shall be extended to the 6th Floor. The 12" rd. duct from existing building shall remain at 3rd Floor and extend up to 6th Floor and continue on to Fan Room as shown on original drawings.



HVAC REVISIONS - ROOM HAO244
 SCALE: 1/4" = 1'-0"

- CODED NOTES:**
- NEW LOCATION FOR LIGHT FIXTURE.
 - SPRINKLER HEAD LOCATION.
 - RELOCATE THERMOSTAT.
 - THERMOSTAT IN NEW LOCATION.
 - AIR FLOW TO THIS DIFFUSER TO REMAIN UNCHANGED.
 - REDUCE AIR FLOW FROM THIS DIFFUSER FROM 150 CFM TO 100 CFM.
 - NEW 12" X 12" TRANSFER GRILLE -- BARR-AIR "G" SERIES WITH DOUBLE V LIGHT-TITE CORE, FLAT BLACK FINISH. PAINT INSIDE OF SHEET METAL BOX ON TOP OF GRILLE FLAT BLACK.
 - CONNECT TO SUPPLY DUCT HERE. DO NOT INSTALL VOLUME DAMPER AT CONNECTION POINT.
 - INSTALL VOLUME DAMPER OPERABLE FROM GRILLE FACE.
 - CONNECT TO EXHAUST DUCT HERE.
 - BALANCE AIR FLOW IN THIS DUCT TO PRODUCE 0.02" NEGATIVE STATIC PRESSURE HERE, IN ACCORDANCE WITH FILM PROCESSOR MANUFACTURER'S RECOMMENDATIONS.
 - CHANGE CEILING DIFFUSER SERVING ROOM 2004 FROM S1C TO S2C. INCREASE BRANCH DUCT SIZE TO 10". INCREASE AIR QUANTITY TO 240 CFM.
 - CHANGE HEATING COIL SERVING THIS DIFFUSER FROM HC-1 TO HC-2.
 - MAKE INDIRECT CONNECTION OF PROCESSOR EXHAUST DUCT TO BUILDING EXHAUST SYSTEM IN ACCORDANCE WITH PROCESSOR MANUFACTURER'S RECOMMENDATIONS. SEE DETAIL.
 - 24" X 24" ACCESS DOOR IN CEILING FOR ACCESS TO BALANCING DAMPER.
 - FILM PROCESSOR.
 - PROVIDE FLAT BLACK FINISH FOR DIFFUSER. PAINT INSIDE OF DIFFUSER SHELL FLAT BLACK.
- RECORD DRAWINGS DATE 10-22-93**
 STAGGS & FISHER CONSULTING ENGINEERS, INC.

ALBERT B. CHANDLER MEDICAL CENTER UNIVERSITY OF KENTUCKY HOSPITAL EXPANSION & RENOVATION

Helmluth, Obata, & Kassabaum, Inc.
 M-E-P Engineering
 100 North Broadway, St. Louis, Mo. 63102
 Ph. 314-421-2000

OMNI/OMW Joint Venture Architects
 In Association with Helmluth, Obata, & Kassabaum
 2805 Harborside Road, Lexington, KY 40504 Ph. 606-251-5045
 300 S. Broadway Lexington, KY 40508 Ph. 606-251-0024

First Floor Auxiliary Systems
 HOSPITAL EXPANSION & RENOVATION
 A.B. CHANDLER MEDICAL CENTER
 PROJECT NO. 304.1
 BID PACKAGE #2

University of Kentucky
 Design & Construction
 Approval
 Director _____
 Date _____
 Drawn by _____
 Check by _____
 Revisions _____

M-32
 31 A-2 018728
 HOSPITAL ADDITL.