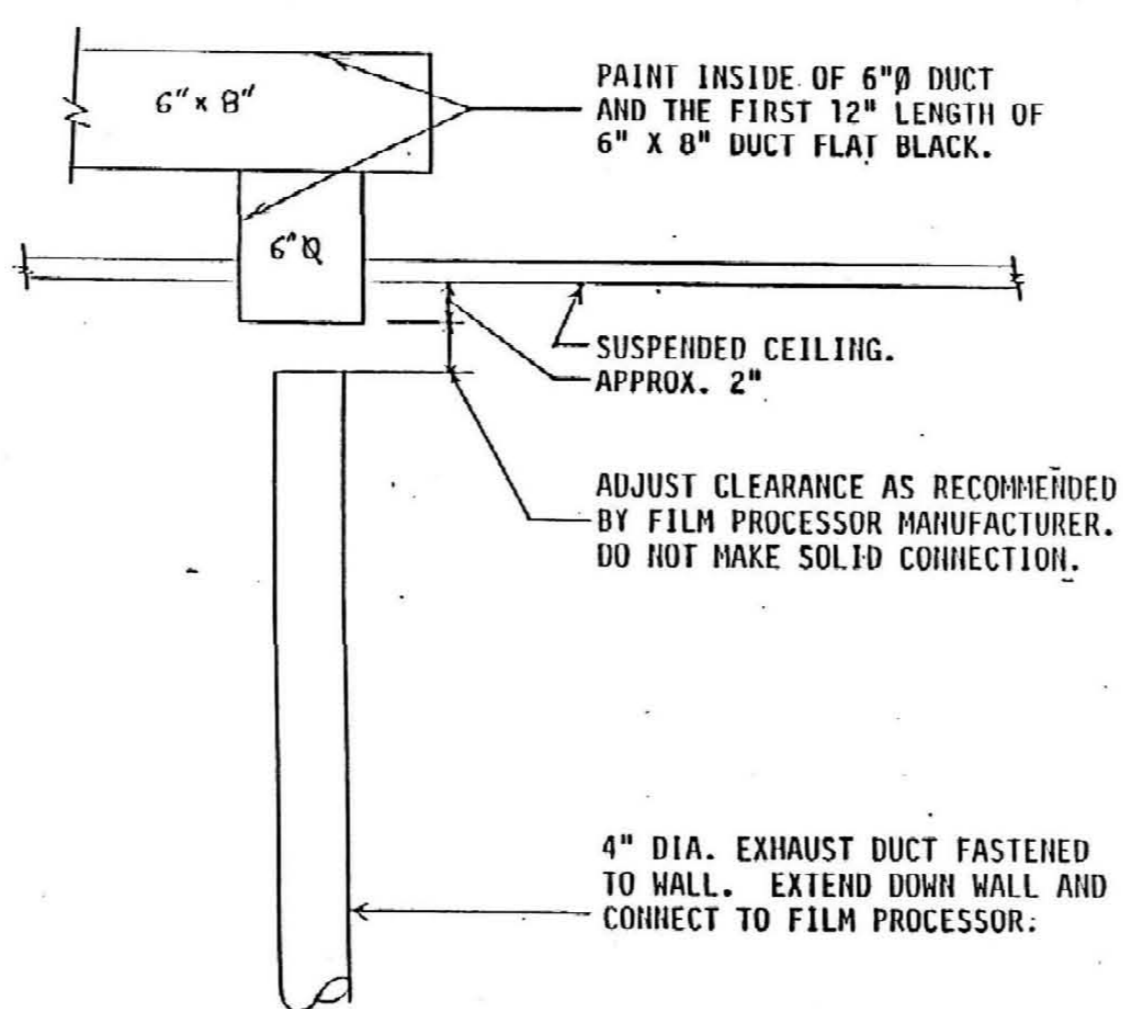
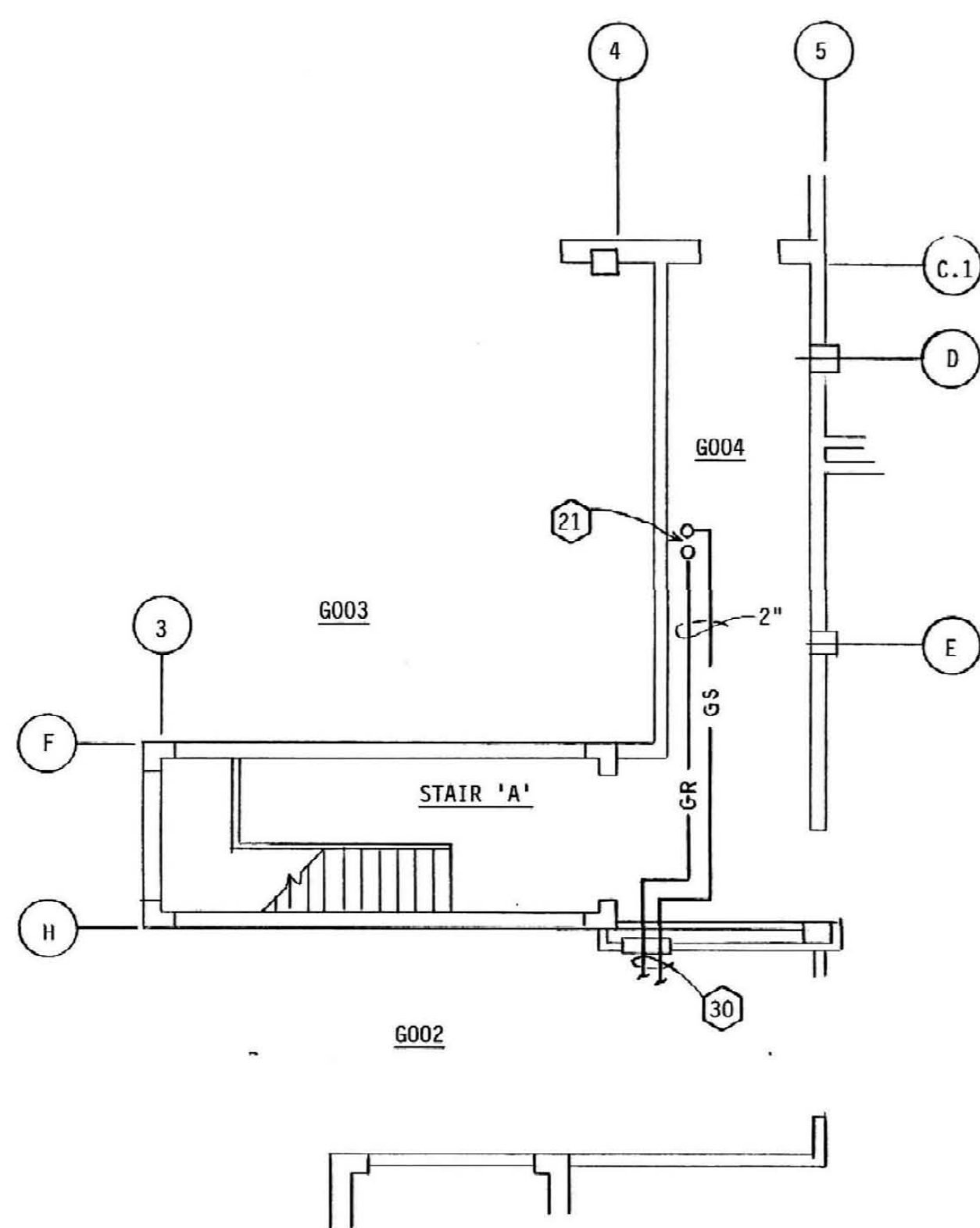


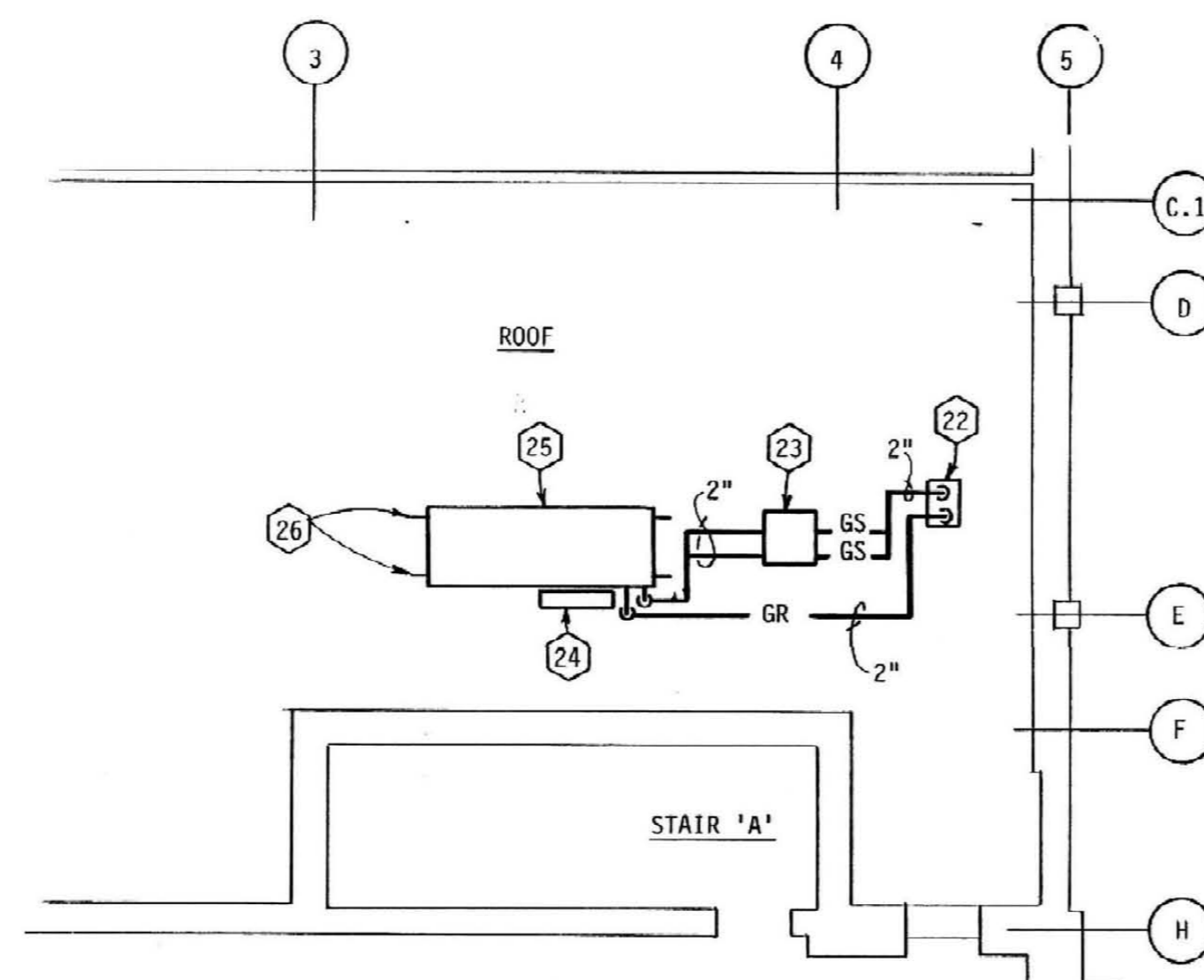
PARTIAL MECHANICAL PLAN - GROUND FLOOR - HAE 051 AREA
SCALE: 1/4" = 1'-0"



DETAIL - FILM PROCESSOR EXHAUST CONNECTION
NO SCALE



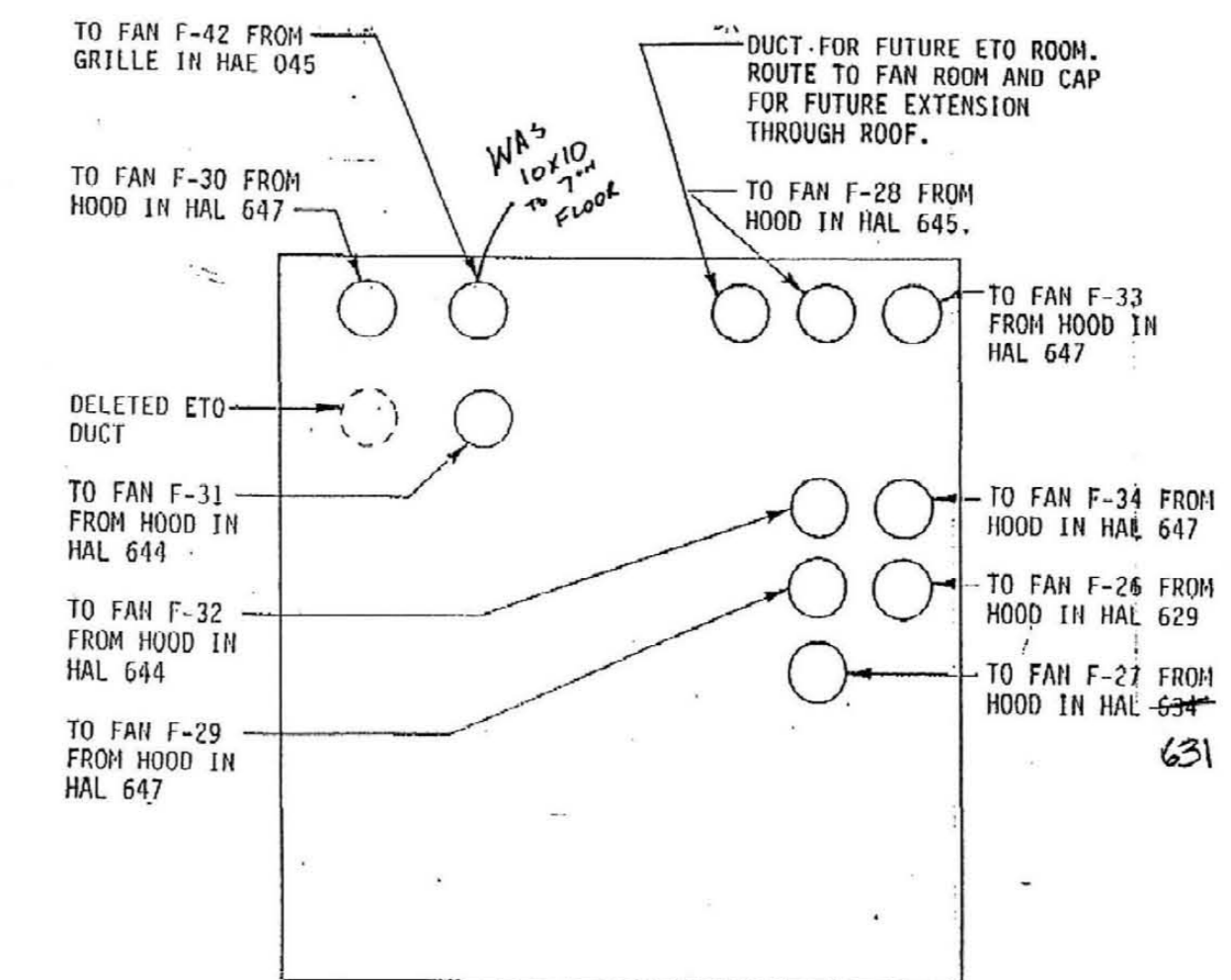
PARTIAL MECHANICAL PLAN - GROUND FLOOR - G004 AREA
SCALE: 1/8" = 1'-0"



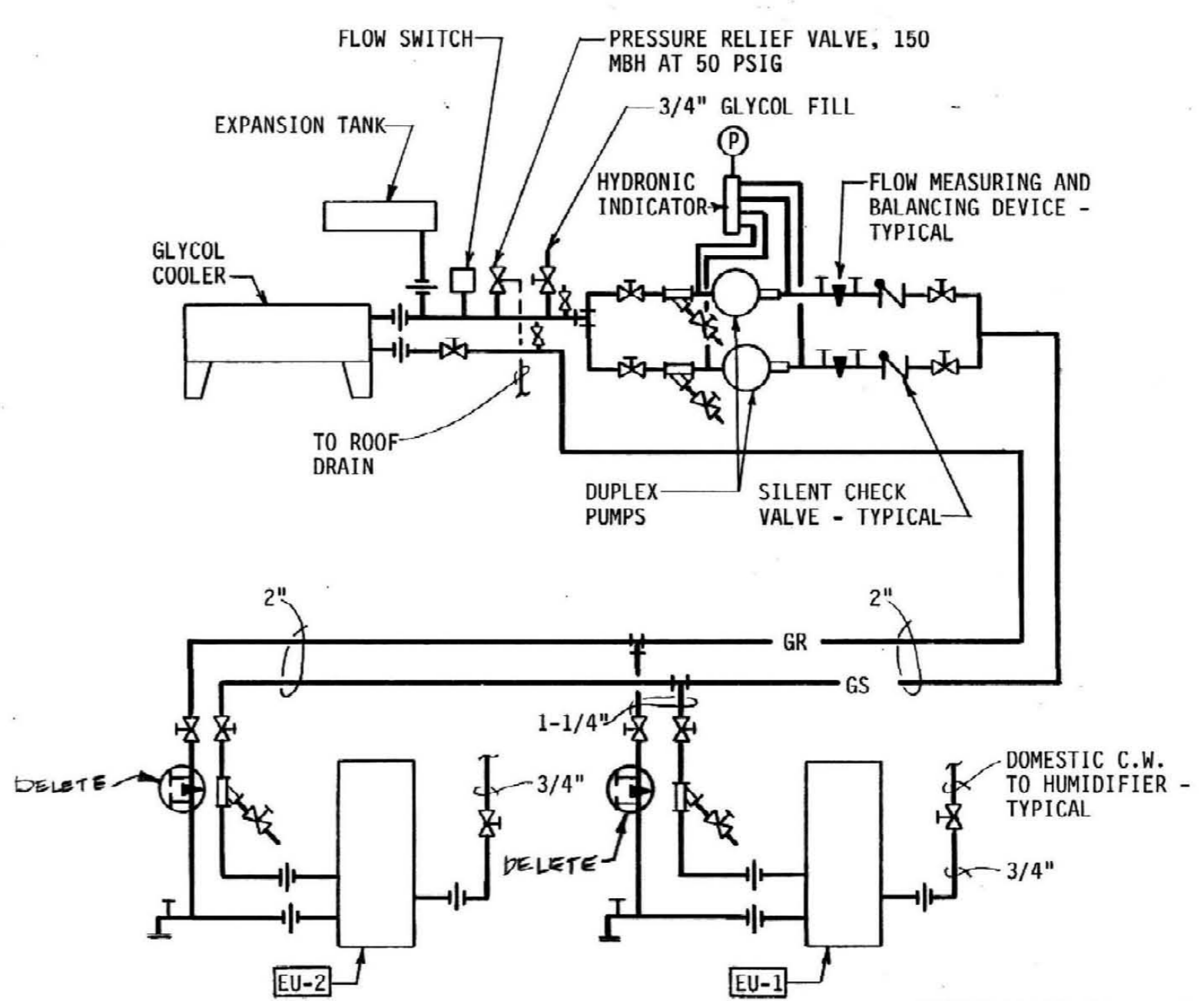
PARTIAL MECHANICAL PLAN - FIRST LEVEL
SCALE: 1/8" = 1'-0"

- MECHANICAL EQUIPMENT SCHEDULE
- ENVIRONMENTAL UNIT EU-1:** LIEBERT NO. CU 41 G CHALLENGER 2 UPFLOW GLYCOL COOLED UNIT WITH 52.5 MBH ELECTRIC REHEAT, 4.8 KW. INFRARED HUMIDIFIER, CONDENSATE PUMP, 2-WAY DISCHARGE PLENUM WITH GRILLES, 20% ASHRAE 52-76 EFFICIENCY FILTERS, LOCKING TYPE DISCONNECT SWITCH, COMPRESSOR ACoustical ENCLOSURE, PREPARED 3-WAY GLYCOL REGULATING VALVE, 12 GPM GLYCOL FLOW, 1500 CFM, 1 HP EVAPORATOR FAN, 3-PHASE, 208 VOLT POWER. TOTAL AND SENSIBLE COOLING CAPACITY 34.2 MBH AT 72° F. EDB AND 58.6° F. RWB. SET UNIT THERMOSTAT TO MAINTAIN 60° F. SPACE TEMPERATURE.
 - ENVIRONMENTAL UNIT EU-2:** LIEBERT SYSTEM 3 NO. FILING DOWNFLOW GLYCOL COOLED UNIT WITH 15 KW. ELECTRIC REHEAT, 6.4 KW. INFRARED HUMIDIFIER, CONDENSATE PUMP, 20% ASHRAE 52-76 EFFICIENCY PREFILTERS, 60% ASHRAE 52-76 EFFICIENCY FINAL FILTERS, 12" HIGH FLOOR STAND, LOCKING TYPE DISCONNECT SWITCH, PREPARED 3-WAY GLYCOL REGULATING VALVE, 14 GPM GLYCOL FLOW, 5650 CFM, 2 HP EVAPORATOR FAN, 3-PHASE, 208 VOLT POWER. COOLING CAPACITY 37.3 MBH TOTAL, 89.9 MBH SENSIBLE AT 72° F. EDB AND 58.6° F. RWB. SET UNIT THERMOSTAT TO MAINTAIN 60° F. SPACE TEMPERATURE.
 - GLYCOL COOLER:** LIEBERT NO. DDO-260, 3-FAN GLYCOL COOLER WITH EXPANSION TANK AND CONTACTORS FOR DUPLEX PUMP PACKAGE, 3/4 HP EACH FAN MOTOR, 3-PHASE, 208 VOLT POWER. UNIT SHALL BE CAPABLE OF OPERATION DOWN TO -20° F. AMBIENT.
 - DUPLEX PUMP PACKAGE:** LIEBERT DUPLEX PUMP PACKAGE WITH ENCLOSURE, EACH PUMP 2 HP, 46 GPM AT 92 FT. HEAD, 3-PHASE, 208 VOLT POWER.

- CODED NOTES:
- DELETE CEILING DIFFUSER. REMOVE BRANCH DUCT BACK TO MAIN. CAP OFF AT MAIN.
 - DELETE RETURN GRILLE. REMOVE BRANCH DUCT BACK TO MAIN. CAP OFF END OF MAIN.
 - 16" X 14" SUPPLY DUCT TO REMAIN.
 - CONNECT TO EXISTING SUPPLY DUCT WITH TRANSITION.
 - CONNECT TO EXISTING RETURN DUCT.
 - RELOCATE THERMOSTAT.
 - NEW LOCATION FOR THERMOSTAT FORMERLY SERVING ROOF HAE051.
 - REMOVE EXISTING 12" X 8" SUPPLY DUCT.
 - RELOCATE EXISTING FIRE/SMOKE DAMPER AND ACCESS DOOR.
 - EXISTING FIRE/SMOKE DAMPER AND ACCESS DOOR IN NEW LOCATION.
 - REMOVE 12" X 8" SUPPLY DUCT IN ORDER TO RELOCATE FIRE/SMOKE DAMPER IN RELOCATED FIRE/SMOKE WALL.
 - CONNECT TO EXISTING 12" X 8" SUPPLY DUCT.
 - REMOVE EXISTING 10" X 10" EXHAUST DUCT.
 - CONNECT TO EXISTING 10" X 10" EXHAUST DUCT.
 - MAKE INDIRECT CONNECTION OF FILM PROCESSOR EXHAUST DUCT TO BUILDING EXHAUST SYSTEM IN ACCORDANCE WITH PROCESSOR MANUFACTURER'S RECOMMENDATIONS. SEE DETAIL.
 - BALANCE AIR FLOW IN THIS DUCT IN ACCORDANCE WITH FILM PROCESSOR MANUFACTURER'S RECOMMENDATIONS.
 - NEW 12" X 12" TRANSFER GRILLE - BARB-AIR "G" SERIES WITH DOUBLE V LIGHT-TITE CORE, FLAT BLACK FINISH. PAINT INSIDE OF SHEET METAL BOX ON TOP OF GRILLE FLAT BLACK.
 - CONDENSATE DRAINAGE PUMP DISCHARGE PIPES FROM ENVIRONMENTAL UNITS. EXTEND TO ROOM HAE051C, DROP CONCEALED IN PARTITION AND TURN OUT AND INTO FLOOR DRAIN IN ROOM. PITCH HORIZONTAL PIPING DOWN TOWARD FLOOR DRAIN.
 - NEW ENVIRONMENTAL UNIT EU-1: LIEBERT CHALLENGER II UPFLOW UNIT.
 - NEW ENVIRONMENTAL UNIT EU-2: LIEBERT DELUXE SYSTEM 3 DOWNFLOW UNIT ON 1'-0" HIGH FLOOR STAND.
 - RISE UP THROUGH ROOF.
 - PATE "MULTIPLE PIPE CURB ASSEMBLY" AND CURB.
 - DUPLEX PUMP PACKAGE AND ENCLOSURE.
 - EXPANSION TANK.
 - GLYCOL COOLER.
 - EQUIPMENT SUPPORT RAILS.
 - REMOVE 4" DIAMETER SOLID DUCT CONNECTION TO FILM PROCESSOR. CAP OFF AT MAIN DUCT.
 - FIELD VERIFY REQUIRED LOCATION FOR EXHAUST CONNECTION TO FILM PROCESSOR.
 - FOR CONTINUATION, SEE PARTIAL MECHANICAL - GROUND FLOOR - G004 AREA.
 - FOR CONTINUATION, SEE PARTIAL MECHANICAL PLAN - GROUND FLOOR - HAE051 AREA.



PARTIAL PLAN - DUCT CHASE - PENTHOUSE FAN ROOM LEVEL
NO SCALE



FLOW DIAGRAM
NO SCALE

- NOTES:
- DUCTWORK AND PIPING IN ROOMS WITH SUSPENDED CEILINGS SHALL BE ABOVE CEILING EXCEPT IN EQUIPMENT ROOMS.
 - INSTALL AIR VENTS AT HIGH POINTS IN PIPING AND DRAINS IN LOW POINTS.
 - LOCATIONS OF PIPING, DUCT AND EQUIPMENT ARE APPROXIMATE AND SUBJECT TO MINOR ADJUSTMENTS IN THE FIELD. DO NOT SCALE THE DRAWINGS.
 - ALL OFFSETS IN DUCTS AND PIPING ARE NOT NECESSARILY SHOWN. PROVIDE ADDITIONAL OFFSETS WHERE NECESSARY.
 - COORDINATE WITH PLUMBING, ELECTRICAL AND SPRINKLER CONTRACTORS TO AVOID INTERFERENCE WITH PIPING, DUCTS AND CONDUIT.
 - INSTALL ALL PIPING, DUCTWORK AND EQUIPMENT IN STRICT ACCORDANCE WITH MANUFACTURER'S INSTALLATION INSTRUCTIONS.
 - SEAL AIRTIGHT AROUND ALL DUCT AND PIPING PENETRATIONS THROUGH WALLS, FLOORS AND ROOF.
 - SEAL ALL DUCTWORK (EXCEPT THOSE TO BE CONTINUOUSLY WELDED) WITH DUCT SEALANT AND/OR DUCT CEMENT IN ACCORDANCE WITH SPECIFICATIONS SECTION "METAL DUCTWORK".
 - FURNISH AND INSTALL ACCESS DOORS IN DUCTS ADJACENT TO EACH FIRE DAMPER AND SMOKE DAMPER FOR INSPECTION AND RESETTING.
 - DIMENSIONS FOR DUCTS ARE INSIDE DIMENSIONS.
 - SEE ARCHITECTURAL REFLECTED CEILING PLANS FOR EXACT LOCATIONS OF GRILLES AND DIFFUSERS IN CEILING.

RECORD DRAWINGS DATE 10-22-89
These record drawings have been prepared, in part, on the basis of information compiled and furnished by others. The Engineer will not be responsible for any errors or omissions which have been incorporated into this document as a result.
STAGGS & FISHER CONSULTING ENGINEERS, INC.

ALBERT B. CHANDLER MEDICAL CENTER UNIVERSITY OF KENTUCKY HOSPITAL EXPANSION & RENOVATION

OMNI/CMW Joint Venture Architects
In Association with Hellmuth, Obata, & Kassabaum
2355 Harrodsburg Road, Lexington, KY 40504 Ph: 606-253-3045
306 S. Broadway, Lexington, KY 40508 Ph: 606-254-5623

SUPPLEMENTAL H.V.A.C. DRAWING
GT SCAM
HOSPITAL EXPANSION & RENOVATION
A. B. CHANDLER MEDICAL CENTER
PROJECT NO. 3041
BID PACKAGE #2

University of Kentucky
Design & Construction Approval
Director
Date: 7-25-89
Drawn by: RJK
Check by: TF
Revisions:

M-31
31 A-2 08/27