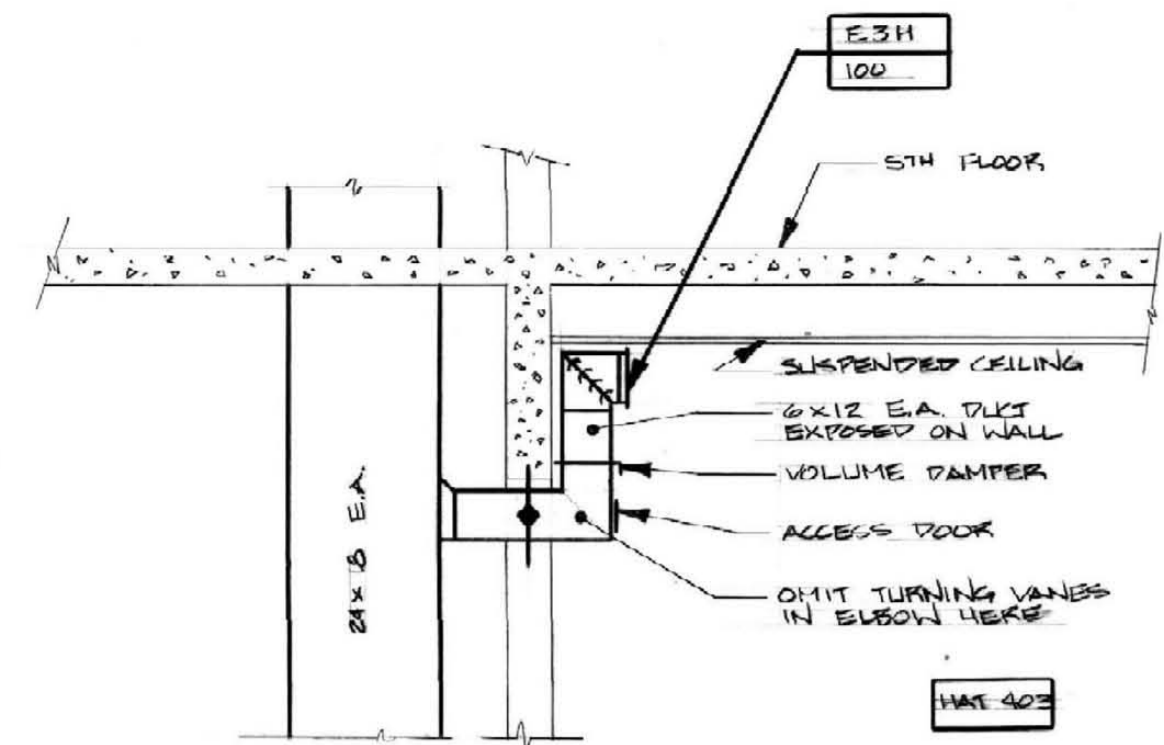
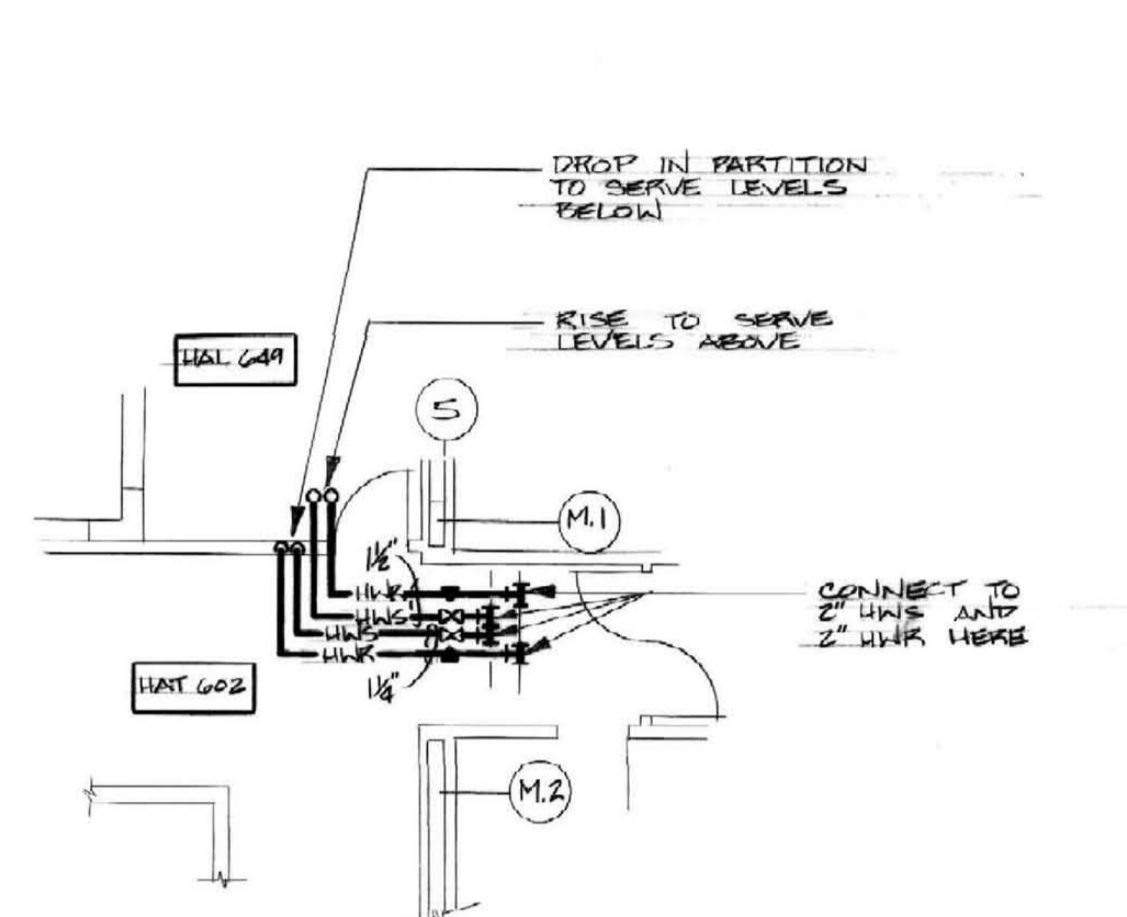


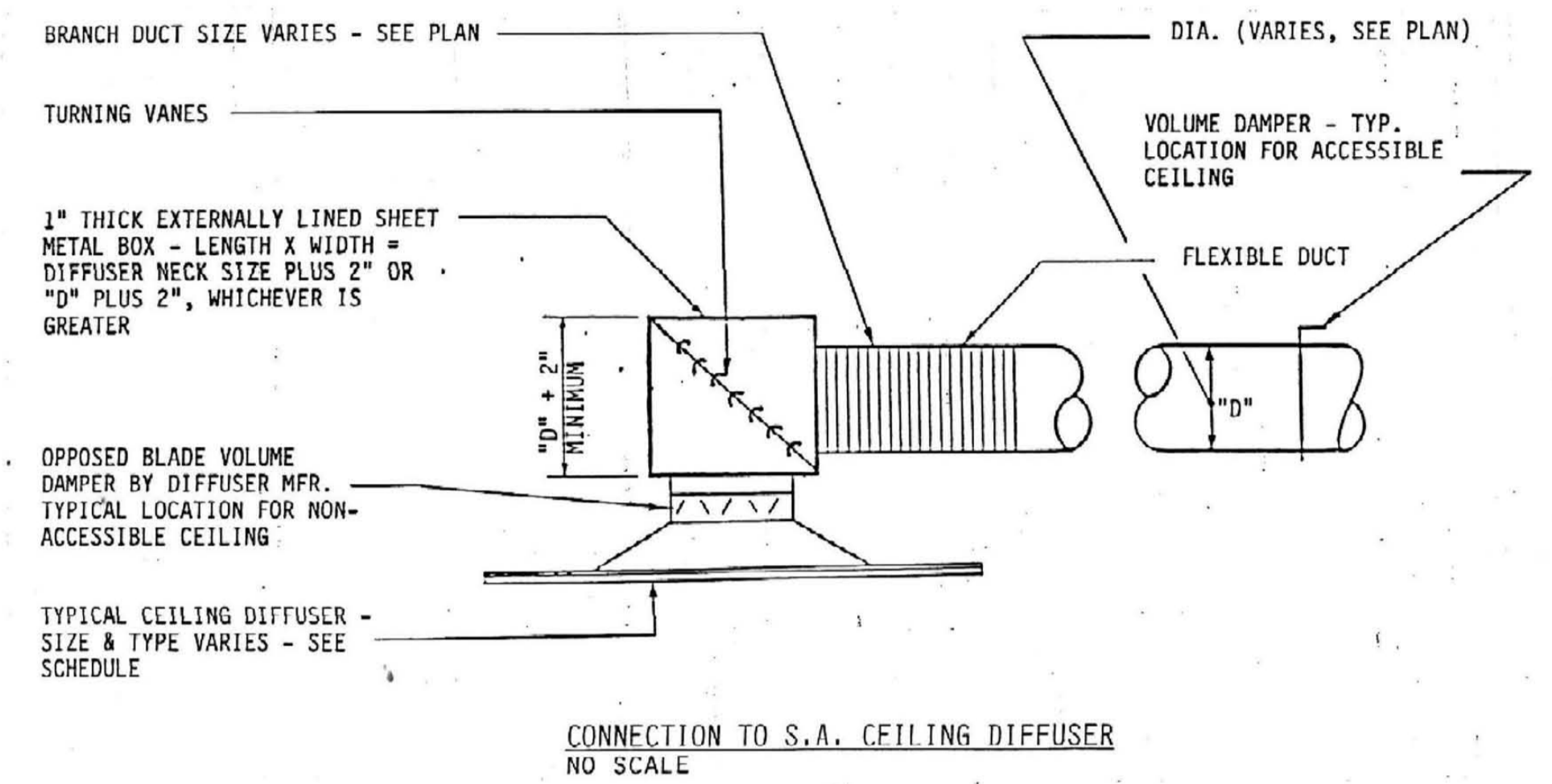
PARTIAL SIXTH FLOOR PLAN
SCALE: 1/8" = 1'-0"



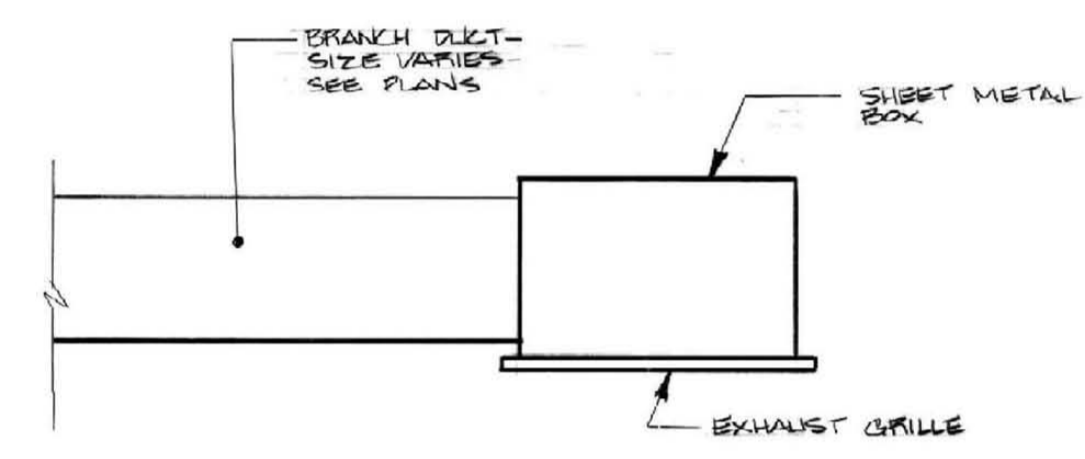
DETAIL EXHAUST GRILLE INSTALLATION
IN ROOM HAT 403
NO SCALE



PARTIAL PLAN - HWS AND HWR CONNECTIONS
SIXTH FLOOR
SCALE: 1/8" = 1'-0"

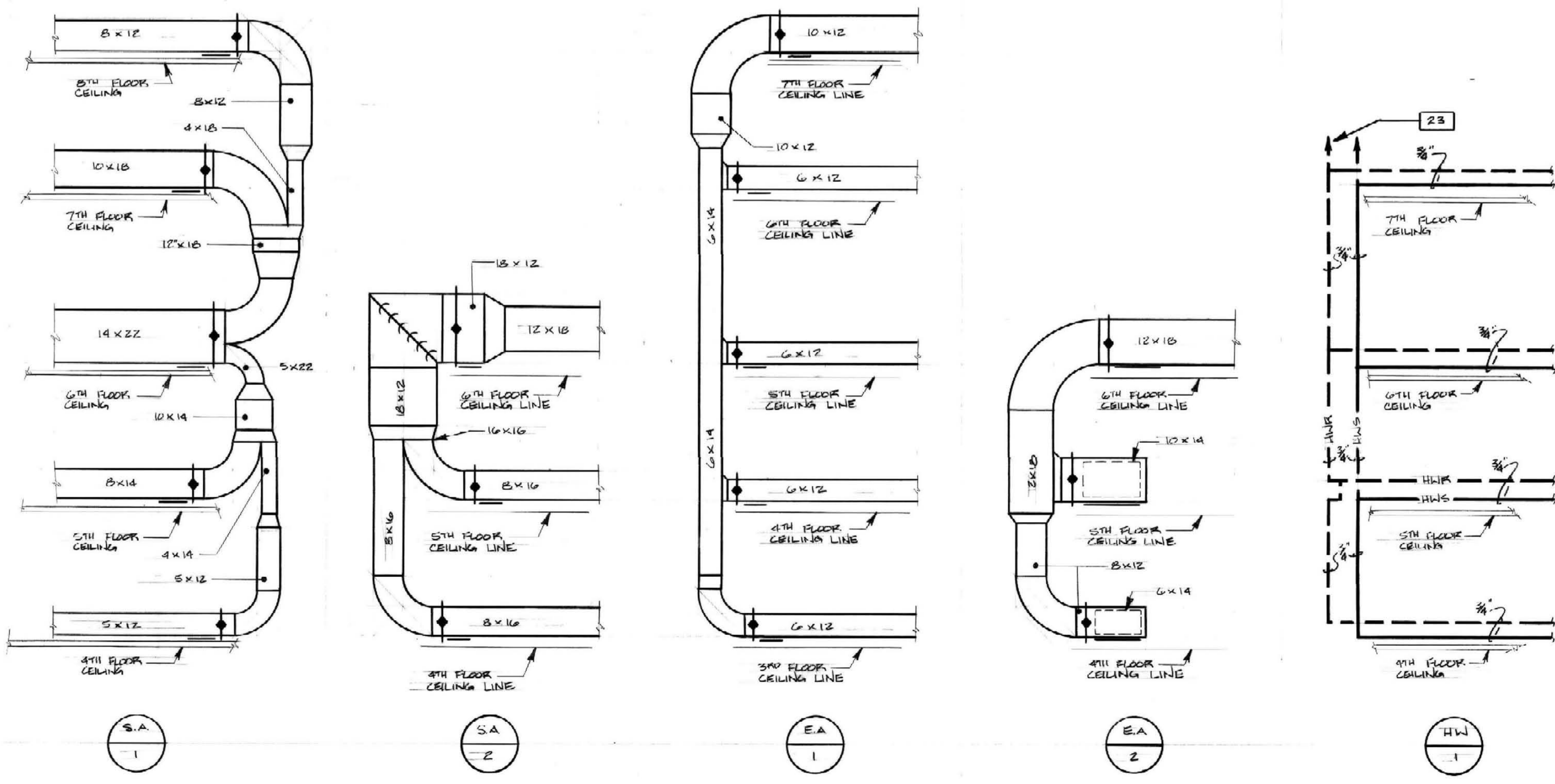


CONNECTION TO S.A. CEILING DIFFUSER
NO SCALE



CONNECTION TO EXHAUST GRILLE
NO SCALE

- CODED NOTES: ALL FLOORS**
- 12" ROUND CAPPED DUCT FOR FUTURE ETO ROOM TO REMAIN. DELETE FIRE DAMPER SHOWN IN DUCT HERE ON ORIGINAL CONTRACT DOCUMENTS.
 - CONNECT TO EXISTING 12" DIAMETER EXHAUST DUCT FROM ETO EQUIPMENT ROOM IN EXISTING BUILDING. BALANCE TO 1200 CFM.
 - PROVIDE SOUND TRAP (FOR HEATING COIL HC-16) IN DUCT RISER ON THIS LEVEL.
 - PROVIDE FIRE DAMPERS IN 12" X 5" S.A. AND E.A. DUCTS AT THIRD FLOOR PENETRATIONS. PROVIDE DUCT ACCESS DOORS AT THIS LEVEL. PROVIDE 24" X 24" ACCESS DOOR IN WALL FOR ACCESS TO FIRE DAMPERS.
 - ADJUST PATTERN CONTROL DEVICES IN CEILING DIFFUSER TO PRODUCE TWO-WAY OPPOSITE THROW IN THE DIRECTIONS INDICATED.
 - 2 - 12" DIAMETER EXHAUST DUCTS UP AND DOWN.
 - 10" X 10" EXHAUST DUCT UP AND DOWN.
 - 18" X 24" EXHAUST DUCT UP AND DOWN.
 - DUCT EXPOSED ON WALL. SEE DETAIL.
 - TRANSITION FROM 16" X 8" TO 12" DIAMETER AT VERTICAL RISE.
 - 1" CONDENSATE DRAIN EXTENDED OUT THROUGH WALL. STUB OUT OF WALL 12" AND TERMINATE WITH OPEN PIPE FOR CONDENSATE DRAINAGE ONTO ROOF.
 - TRANSITION FROM 38" X 16" E.A. TO 40" X 24" E.A. AFTER PASSING THROUGH LEVEL 7, OFFSET TO NEW LOCATION AS INDICATED.
 - TRANSITION FROM 56" X 18" E.A. TO 24" X 50" E.A. AFTER PASSING THROUGH LEVEL 7, OFFSET TO NEW LOCATION AS INDICATED.
 - TRANSITION FROM 48" X 12" E.A. TO 28" X 18" E.A. AFTER PASSING THROUGH LEVEL 7.
 - PROVIDE 4" X 4" CONCRETE CURB AROUND EACH RECTANGULAR DUCT OPENING THROUGH FLOOR AND PIPE SLEEVE FOR EACH ROUND DUCT OPENING. TYPICAL FOR ALL DUCT PENETRATIONS IN THIS SPACE AT THIS LEVEL.
 - PROVIDE FIRE DAMPER IN THIS DUCT AT PENETRATION OF FLOOR ABOVE. PROVIDE ACCESS DOOR IN DUCT FOR ACCESS TO FIRE DAMPER FROM FLOOR ABOVE.
 - 24" X 18" E.A. UP.
 - OFFSET THIS DUCT TO THE NEW LOCATION SHOWN.
 - DROP EXPOSED ON WALL TO FLOOR BELOW.
 - 12" X 7" S.A. TO SERVE ROOMS HAT 507 AND HAT 508 ON FLOOR BELOW. PROVIDE COMBINATION FIRE/SMOKE DAMPER AND ACCESS DOOR AT WALL PENETRATION INTO ROOM HAL 649. DROP BRANCH DUCTS EXPOSED ON WALL IN THIS ROOM TO SERVE ROOMS BELOW. SEE FIFTH FLOOR PLAN FOR LOCATION OF BRANCH DUCT RISERS.
 - PROVIDE IAC TYPE 3MS SOUND TRAP, 12" WIDE X 7-1/2" HIGH X 36" LONG FOR TERMINAL UNIT INSTEAD OF A 12" X 12" X 36" PACKLESS TRAP.
 - EXTEND 1-1/2" CWS AND CWR BACK TO CONNECTION POINTS AT MAINS IN LEVEL 6 MECHANICAL EQUIPMENT ROOM INSTEAD OF 2-1/2".
 - PROVIDE MANUAL AIR VENT (1/4" H.O. TRERICE NO. 735 VENT VALVE) IN BRANCH HWS AND HWR PIPES FOR COIL AT HIGH POINTS IN PIPING. TERMINATE AIR LINE AT 6" ABOVE CEILING.
 - PROVIDE MANUAL AIR VENTS IN HWS AND HWR (1/4" H.W. TRERICE NO. 735 VENT VALVE). EXTEND AIR LINE THROUGH SHAFT WALL INTO SPACE ABOVE CEILING OF ROOM HAT 705 AND INSTALL VENT VALVES THERE. TERMINATE VENT LINES AT 6" ABOVE CEILING.
 - MAKE DUCT CONNECTION TO AIR DEVICE HERE WITH SQUARE SHEET METAL BOX AS DETAILLED.
 - RISE UP TO FAN COIL UNIT ON FLOOR ABOVE.
 - CONSTANT VOLUME TYPE AIR TERMINAL UNIT. ADJUST MAXIMUM AND MINIMUM AIR FLOW TO BE THE SAME.
 - CONNECT TO HWS AND HWR SHOWN ON ORIGINAL CONTRACT DOCUMENTS HERE.
 - DELETE EXHAUST AIR TERMINALS, GRILLES AND BRANCH DUCTWORK SERVING ROOMS 3003 AND 3002. DELETE BRANCH DUCT BACK TO CONNECTION POINT TO MAIN.
 - DELETE SUPPLY AND EXHAUST AIR SYSTEM SERVING ROOMS HAL 301 AND HAL 302. DELETE BRANCH DUCTS BACK TO CONNECTION POINTS TO MAINS.
 - TRANSITION FROM 56" X 18" E.A. TO 24" X 50" E.A. AFTER PASSING THROUGH LEVEL 7, OFFSET TO NEW LOCATION AS INDICATED.
 - OFFSET PIPING OVER TOP OF DUCT AND RISE TO FLOOR ABOVE.
 - 100 CFM EXHAUST, 12" X 6" EIC IN CEILING HERE. EXTEND 12" X 6" DUCT UP THROUGH FLOOR ABOVE AND CONNECT TO 24" X 18" EXHAUST DUCT. PROVIDE FIRE DAMPER AT FLOOR PENETRATION. PROVIDE ACCESS DOOR AND VOLUME DAMPER IN DUCT ABOVE FIRE DAMPER.
 - 1-1/4" HWS AND 1-1/4" HWR. DROP IN PARTITION TO SERVE LEVELS BELOW. SEE DETAIL OF CONNECTIONS TO THE 2 1/2" HWS AND THE 2 1/2" HWR SHOWN ON CONTRACT DOCUMENTS.
 - 1-1/2" HWS AND 1-1/2" HWR TO SERVE LEVELS ABOVE. SEE DETAIL OF CONNECTIONS TO THE 2 1/2" HWS AND THE 2 1/2" HWR SHOWN ON CONTRACT DOCUMENTS.
 - MAKE HW CONNECTIONS TO 2 1/2" HWS AND HWR SHOWN ON CONTRACT DOCUMENTS HERE. SEE PARTIAL PLAN.
 - CONNECT TO 24" X 12" S.A. DUCT SHOWN ON CONTRACT DOCUMENTS HERE.
 - PROVIDE COMBINATION FIRE/SMOKE DAMPER AND ACCESS DOOR IN DUCT AT WALL PENETRATION.
 - PROVIDE FIRE DAMPER AND ACCESS DOOR IN 24" X 18" E.A. DUCT AND 10" X 10" E.A. DUCT AT WALL PENETRATION.
 - PROVIDE COMBINATION FIRE/SMOKE DAMPER AND ACCESS DOOR IN THE 50" X 18" E.A. DUCT AND THE 24" X 12" S.A. DUCT AT WALL PENETRATIONS HERE.
 - PROVIDE COMBINATION FIRE/SMOKE DAMPER AND ACCESS DOOR IN THE 24" X 16" S.A. DUCT AND THE 48" X 12" E.A. DUCT AT WALL PENETRATIONS HERE.
 - PROVIDE FIRE DAMPER AND ACCESS DOOR IN DUCT AT WALL PENETRATION.



PIPE AND DUCT RISER DIAGRAMS
NO SCALE

RECORD DRAWINGS DATE: 10-22-93
These record drawings have been prepared, in part, on the basis of information compiled and furnished by others. The Engineer will not be responsible for any errors or omissions which have been incorporated into this document as a result.
STAGGS & FISHER CONSULTING ENGINEERS, INC.

ALBERT B. CHANDLER MEDICAL CENTER UNIVERSITY OF KENTUCKY HOSPITAL EXPANSION & RENOVATION



STAGGS & FISHER CONSULTING ENGINEERS
317 S. ARBANSKY BLVD.
LEXINGTON, KENTUCKY 40504
PHONE: (606) 258-1188

OMNI/CMW Joint Venture Architects
In Association with Helmluth, Obata, & Kassabaum
2365 Harrodsburg Road, Lexington, KY 40504 Ph: 606-223-3045
Chandler-Miller-Woodford 326 S. Broadway, Lexington, KY 40508 Ph: 606-854-6623

MECHANICAL NOTES - RISERS AND DETAILS
HOSPITAL EXPANSION & RENOVATION
A. B. CHANDLER MEDICAL CENTER
PROJECT NO. 304.1
BID PACKAGE #2

University of Kentucky
Design & Construction
Approval
Director

Date: SEPT. 08
Drawn by: MG
Check by: TF
Revisions:

M-30

SUPPLEMENTAL DRAWING