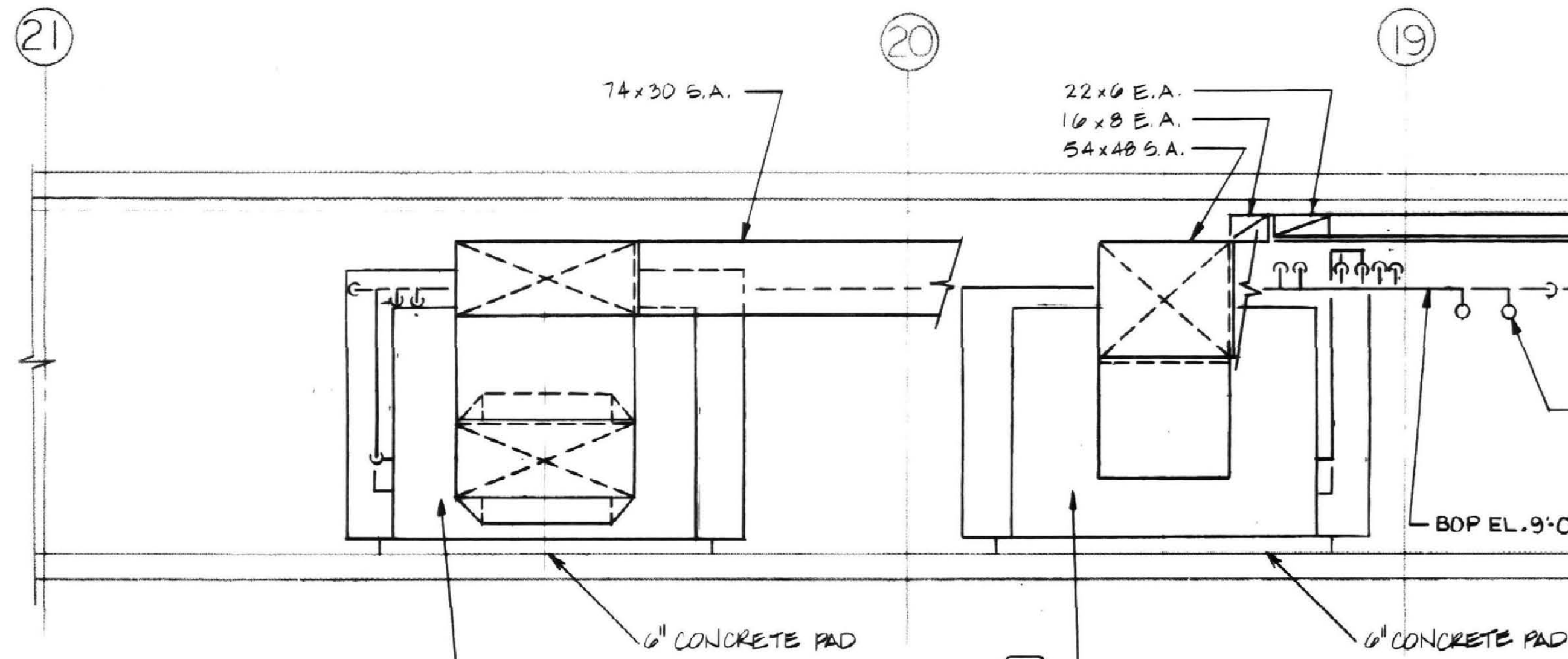


A SECTION
SCALE: 1/4" = 1'-0"



B SECTION
SCALE: 1/4" = 1'-0"

KEYED NOTES

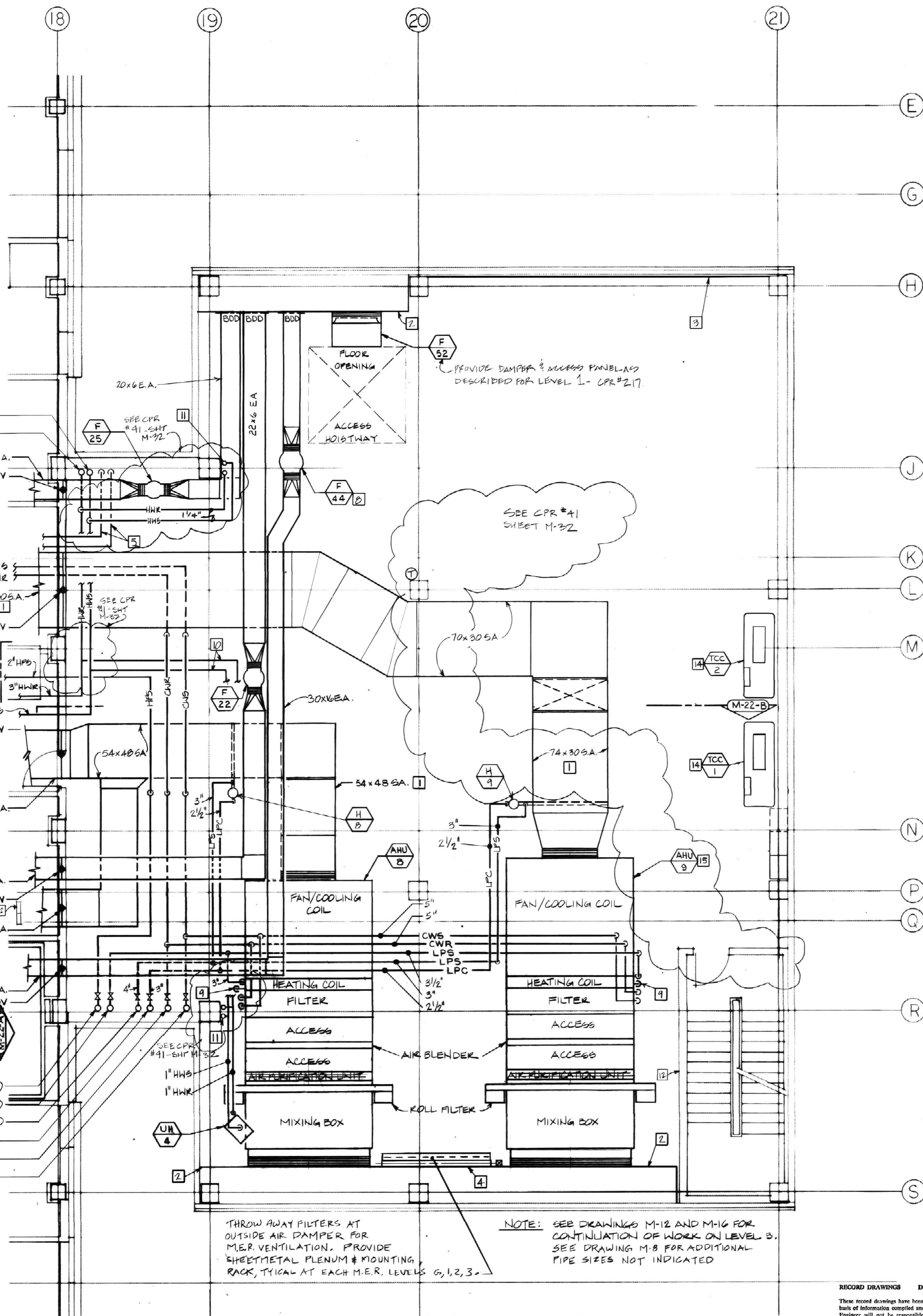
- SUPPLY AIR DUCTS FROM AHU DISCHARGE TO 50 FEET (ALONG DUCT) BEYOND WHERE DUCT PENETRATES MECHANICAL ROOM WALL AT COLUMN LINE 18 SHALL BE HIGH PRESSURE DUCT CONSTRUCTION.
- 36" DEEP INSULATED PLENUM WALL FULL HEIGHT FROM FLOOR TO UNDERSIDE OF SLAB. PROVIDE LIGHT WEIGHT CONCRETE BASE IN PLENUM SLOPED FROM OUTSIDE WALL TO PLENUM WALL AT 1/8" PER FOOT. PROVIDE 3/4" DRAIN IN BOTTOM OF PLENUM WALL ROUTED TO FLOOR DRAIN. INSTALL BOARD INSULATION OF ROOM SIDE OF PLENUM WALL.
- INSULATED SHEETMETAL BLANKOFF PANEL FOR UNUSED SECTION OF LOUVER.
- 36" H X 108" W MOTORIZED DAMPER FOR EQUIPMENT ROOM VENTILATION MAKE-UP AIR FOR F-52. MOUNT TOP OF DAMPER AT 9'-0" AFF.
- 2" AVIATION FUEL SUPPLY AND RETURN PIPING DOWN THROUGH SLAB. PIPING ROUTED IN CONTAINMENT PIPE AS SPECIFIED. ROUTE PIPING ABOVE CEILING ON LEVEL 3 TO LOCATION INDICATED AND EXTEND UP THROUGH LEVEL 4 SLAB.
- FDV. SEE DETAIL M-25P. COORDINATE FIRE OR FIRE/SMOKE DAMPER RATING WITH FIRE OR SMOKE PARTITION CONSTRUCTION RATING, TYPICAL.
- PROVIDE SHUT-OFF VALVE AND BLIND FLANGE ABOVE BRANCH TAKE-OFF TO THIS FLOOR FOR FUTURE CONNECTION.
- SEE DETAIL M-27H FOR FAN INSTALLATION, TYPICAL.
- STEAM HEATING COIL LPC PIPE THROUGH FLOOR. LOCATE STREAM TRAP ASSEMBLY AT CEILING OF FLOOR BELOW, SEE DETAIL M-25L.
- 1-1/2" HWS AND 1-1/2" HWR TO UH-4 AND HANGER.
- 1-1/2" HWS AND 1-1/2" HWR UP TO HANGER LEVEL.
- SPACE FOR TEMPERATURE CONTROL PANEL(S).
- 1-1/2" FOR AND 1" FOR DOWN TO SUB-COOL DUMP ON LEVEL 3.
- SPACE FOR TEMPERATURE CONTROL AIR COMPRESSOR. PROVIDE 4" HIGH CONCRETE MAINTENANCE PAD UNDER EACH UNIT.
- ROUTE DRAIN PAN PIPE TO FLOOR DRAIN, SEE DETAIL M-27F.

NOTE:
ACCESS SECTIONS ENTERING AND LEAVING SHALL BE A MINIMUM OF 24" WIDE. ACCESS SECTIONS SHALL BE INCREASED IN SIZE AS REQUIRED FOR AIR BLENDER APPLICATION. ACCESS SECTIONS SHALL HAVE FULL SIZE ACCESS DOORS - 24" WIDE AND SHALL BE HINGED WITH LATCHES. ACCESS SECTIONS AND/OR TRANSITION SECTIONS MAY BE FACTORY MANUFACTURED OR MAY BE FIELD FABRICATED BY SHEETMETAL CONTRACTOR.

- 7 1" HWS
- 7 1" HWR
- 7 1" LPC
- 7 8" CWK
- 7 8" CW6

NOTE:
THROW AWAY FILTERS AT OUTSIDE AIR DAMPER FOR M.E.R. VENTILATION. PROVIDE SHEETMETAL PLENUM & MOUNTING RACK, TYPICAL AT EACH M.E.R. LEVELS 6, 1, 2, 3.

NOTE:
SEE DRAWINGS M-12 AND M-16 FOR CONTINUATION OF WORK ON LEVEL 3. SEE DRAWING M-8 FOR ADDITIONAL PIPE SIZES NOT INDICATED.



LEVEL 6 MECHANICAL EQUIPMENT ROOM PLAN
SCALE: 1/4" = 1'-0"

RECORD DRAWINGS DATE: 10-22-95

These record drawings have been prepared, in part, on the basis of information compiled and furnished by others. The Engineer will not be responsible for any errors or omissions which have been incorporated into this document as a result.

STAGGS & FISHER CONSULTING ENGINEERS, INC.

ALBERT B. CHANDLER MEDICAL CENTER UNIVERSITY OF KENTUCKY HOSPITAL EXPANSION & RENOVATION

Hellmuth, Obata, & Kassabaum, Inc.
M-E-P Engineering

100 North Broadway, St. Louis, Mo., 63102 Ph 314-481-2000

OMNI/CMW Joint Venture Architects
In Association with Hellmuth, Obata, & Kassabaum

2655 Hamburg Road Lexington, KY 40504 Ph 606-255-9545
305 S Broadway Lexington, KY 40508 Ph 606-254-6663

1/4" Scale Third Level M.E.R. Plan
HOSPITAL EXPANSION & RENOVATION
A. B. CHANDLER MEDICAL CENTER
PROJECT NO. 304.1
BID PACKAGE #2

University of Kentucky
Design & Construction
11/87

Date: 11/87
Drawn by: JEB
Check by:
Revisions:

M-22

HOSPITAL ADDITION