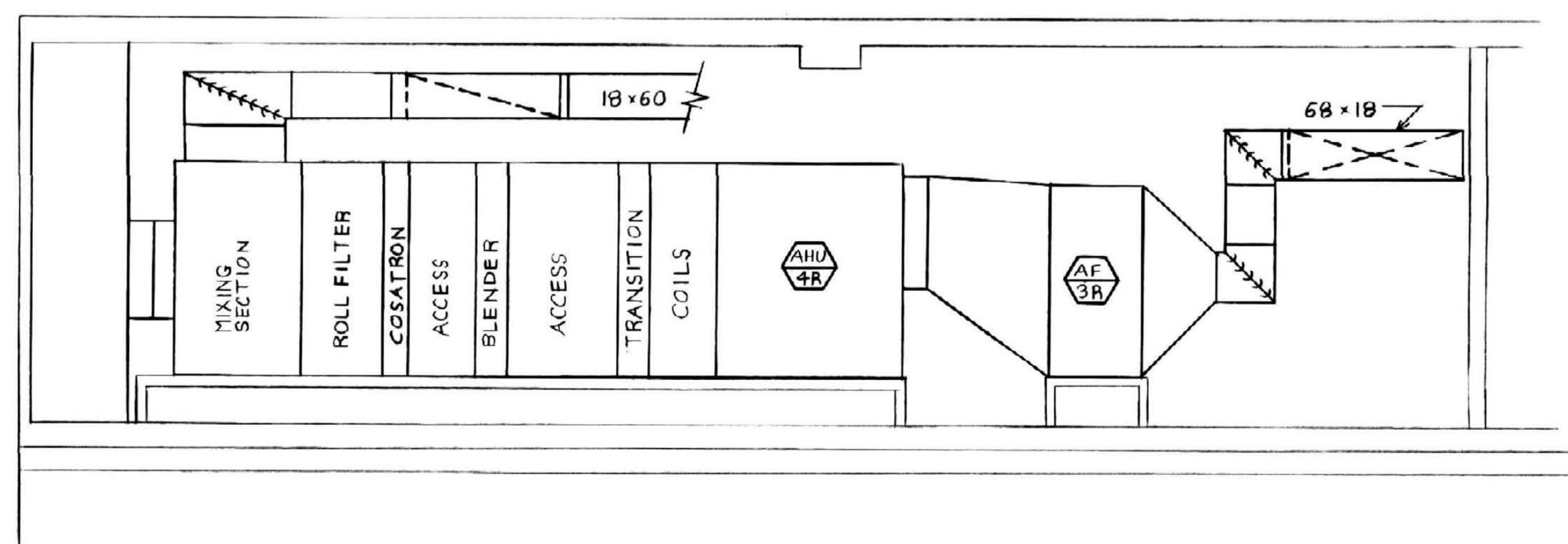
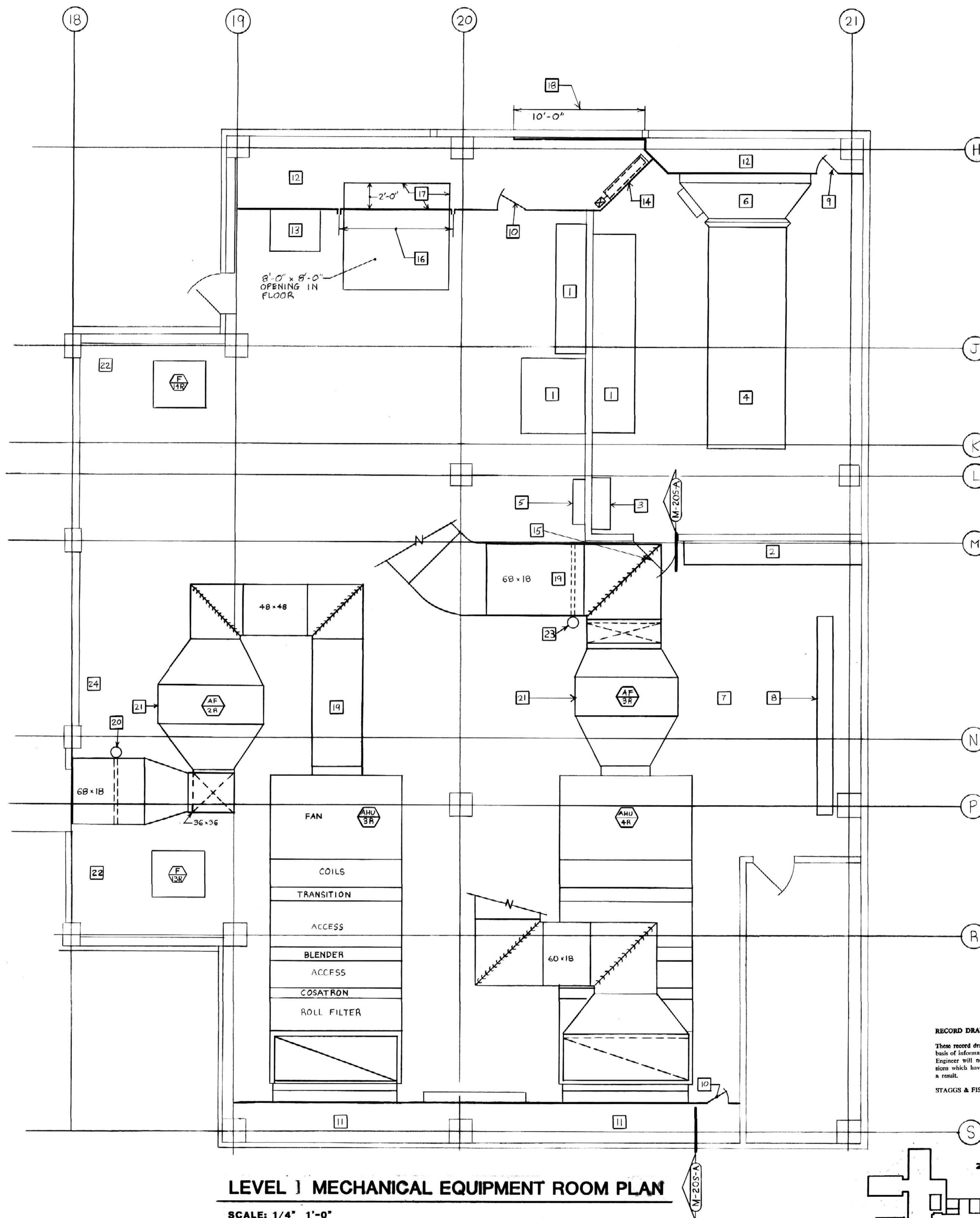


- CODED NOTES:**
- 1 ELECTRIC OEAR.
 - 2 ELECTRIC MOTOR CONTROL CENTER AND CAPACITOR BANKS.
 - 3 ELECTRIC AUTOMATIC TRANSFER SWITCH.
 - 4 EMERGENCY GENERATOR.
 - 5 TEMPERATURE CONTROL PANEL.
 - 6 EMERGENCY GENERATOR DISCHARGE DUCT AND DAMPERS DO NOT CHANGE.
 - 7 DELETE 150" X 48" EMERGENCY GENERATOR OUTSIDE AIR INTAKE DUCT.
 - 8 STEAM PRESSURE REDUCING STATIONS.
 - 9 1'-6" X 4'-0" PLENUM ACCESS DOOR.
 - 10 2'-0" X 4'-0" PLENUM ACCESS DOOR.
 - 11 OUTSIDE AIR PLENUM.
 - 12 EXHAUST PLENUM.
 - 13 INSTALL EXHAUST FAN F-46 HERE UNDER 60" X 18" DUCT INSTEAD OF WHERE SHOWN ON ORIGINAL DRAWINGS.
 - 14 48" X 120" MOTORIZED EMERGENCY GENERATOR INTAKE DAMPER.
 - 15 REVERSE DOOR SWING SO DOOR DOES NOT SWING INTO ELECTRICAL MOTOR CONTROL CENTER.
 - 16 BOLTED AND GASKETED SECTION OF PLENUM FOR FUTURE REMOVAL.
 - 17 BOLTED AND GASKETED FILLER PLATE OVER OPENING AT CEILING ABOVE AND FLOOR BELOW. MAKE FLOOR PLATE MINIMUM 1/4" THICK STEEL. BOLT FLOOR PLATE TO FLOOR WITH 3/4" HIGH STRENGTH STEEL BOLTS ON 1'-0" CENTERS.
 - 18 BLANK OFF THIS PORTION OF LOUVER WITH SHERY METAL. PAINT BLANKED OFF SIDE FACING LOUVER FLAT BLACK.
 - 19 MEDIUM PRESSURE SUPPLY AIR DUCT FROM FAN DISCHARGE TO SOUND TRAP ST-27. PROVIDE GAGE AND REINFORCEMENT TO WITHSTAND 6" STATIC PRESSURE.
 - 20 HUMIDIFIER H-3, RELOCATED SLIGHTLY.
 - 21 INSTALL FILTER HOUSING ON 1'-6" HIGH STEEL PLATFORM SIMILAR TO AIR HANDLING UNIT SUPPORT.
 - 22 REINFORCE MAIN RETURN AIR DUCTS FROM FAN INLET TO SOUND TRAP ST-16 TO WITHSTAND 3-INCH STATIC PRESSURE.
 - 23 HUMIDIFIER H-4, RELOCATED SLIGHTLY.
 - 24 REINFORCE MAIN RETURN AIR DUCT FROM FAN INLET TO SOUND TRAP ST-21 TO WITHSTAND 3-INCH STATIC PRESSURE.



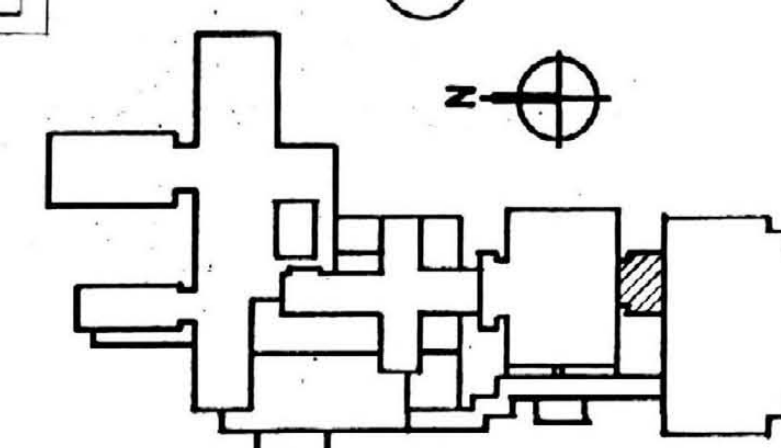
SECTION A
SCALE: 1/4" 1'-0"



LEVEL 1 MECHANICAL EQUIPMENT ROOM PLAN

SCALE: 1/4" 1'-0"

RECORD DRAWINGS DATE: 10-22-95
 These record drawings have been prepared, in part, on the basis of information compiled and furnished by others. The Engineer will not be responsible for any errors or omissions which have been incorporated into this document as a result.
 STAGGS & FISHER CONSULTING ENGINEERS, INC.



KEY PLAN

ALBERT B. CHANDLER MEDICAL CENTER UNIVERSITY OF KENTUCKY HOSPITAL EXPANSION & RENOVATION

1/4 SCALE PARTIAL SECOND LEVEL M.E.R. PLAN
 HOSPITAL EXPANSION & RENOVATION
 A. B. CHANDLER MEDICAL CENTER
 PROJECT NO. 304.1
 BID PACKAGE #2

OMNIVENTURE Architects
 In Association with Hellmuth, Obata & Kassabaum
 285 Hamdabue Road Lexington, KY 40504 Ph: 606-253-3045
 Chairman-Killer Woodford 326 S. Broadway Lexington, KY 40508 Ph: 606-254-6923

STAGGS & FISHER
 CONSULTING ENGINEERS
 317 S. ARMAND AVE.
 LEXINGTON, KENTUCKY 40508
 PHONE: 606-258-1108

University of Kentucky
 Design & Construction
 Approval

Director

Date _____
 Drawn by PJC
 Check by _____
 Revisions _____

M-20S