



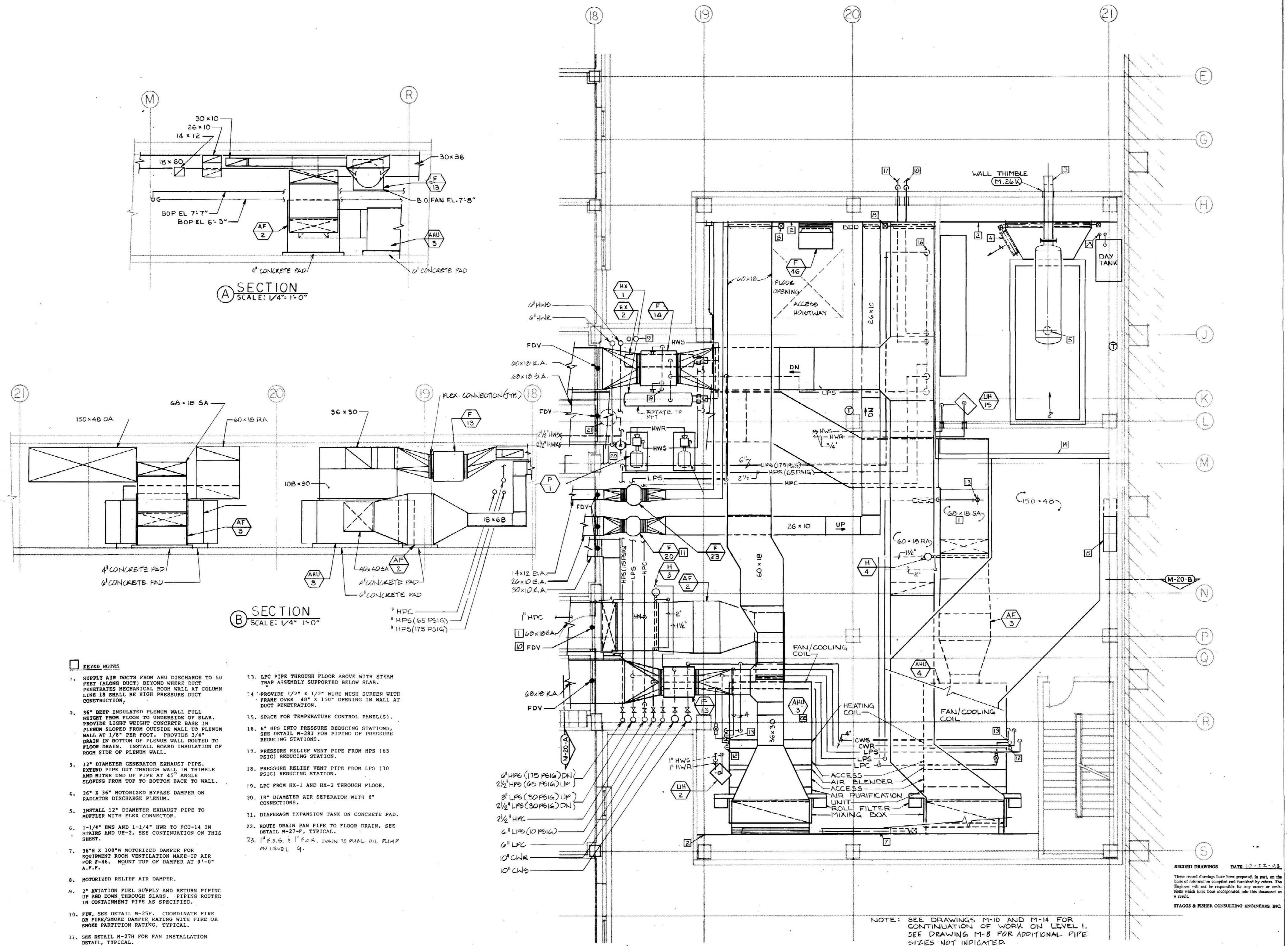
**Helimuth, Obata, & Kassabaum, Inc.**  
**M-E-P Engineering**  
 100 North Broadway, St. Louis, Mo. 63102  
 Ph 314-421-8800

**OMNI/CMW Joint Venture Architects**  
 In Association with Helimuth, Obata, & Kassabaum  
 2895 Limestone Road, Lexington, KY 40504 Ph 505-223-3045  
 305 S Broadway, Lexington, KY 40506 Ph 505-554-6623  
 Chairman-Miller-Woodford

1/4" Scale First Level M.E.R. Plan  
**HOSPITAL EXPANSION & RENOVATION**  
**A. B. CHANDLER MEDICAL CENTER**  
 PROJECT NO. 304-1  
 BID PACKAGE #2

University of Kentucky  
 Design & Construction  
 Approval  
 Director  
 Date 11/88  
 Drawn by JEB  
 Check by  
 Revisions  
 Date 11/88  
 Drawn by JEB  
 Check by  
 Revisions  
 Date 11/88  
 Drawn by JEB  
 Check by  
 Revisions

HOSPITAL ADDITION



**A SECTION**  
 SCALE: 1/4" = 1'-0"

**B SECTION**  
 SCALE: 1/4" = 1'-0"

**KEYED NOTES**

- SUPPLY AIR DUCTS FROM AHU DISCHARGE TO 50 FEET (ALONG DUCT) BEYOND WHERE DUCT PENETRATES MECHANICAL ROOM WALL AT COLUMN LINE 18 SHALL BE HIGH PRESSURE DUCT CONSTRUCTION.
- 36" DEEP INSULATED PLENUM WALL FULL HEIGHT FROM FLOOR TO UNDERSIDE OF SLAB. PROVIDE LIGHT WEIGHT CONCRETE BASE IN PLENUM SLOPED FROM OUTSIDE WALL TO PLENUM WALL AT 1/8" PER FOOT. PROVIDE 3/4" DRAIN IN BOTTOM OF PLENUM WALL ROUTED TO FLOOR DRAIN. INSTALL BOARD INSULATION OF ROOM SIDE OF PLENUM WALL.
- 12" DIAMETER GENERATOR EXHAUST PIPE. EXTEND PIPE OUT THROUGH WALL IN THIMBLE AND MITER END OF PIPE AT 45° ANGLE SLOPING FROM TOP TO BOTTOM BACK TO WALL.
- 36" X 36" MOTORIZED BYPASS DAMPER ON RADIATOR DISCHARGE PLENUM.
- INSTALL 12" DIAMETER EXHAUST PIPE TO MUFFLER WITH FLEX CONNECTOR.
- 1-1/4" HWS AND 1-1/4" HWR TO FCU-14 IN STAIRS AND UR-2, SEE CONTINUATION ON THIS SHEET.
- 36" X 108" MOTORIZED DAMPER FOR EQUIPMENT ROOM VENTILATION MAKE-UP AIR FOR F-46. MOUNT TOP OF DAMPER AT 9'-0" A.F.F.
- MOTORIZED RELIEF AIR DAMPER.
- 2" AVIATION FUEL SUPPLY AND RETURN PIPING UP AND DOWN THROUGH SLABS. PIPING ROUTED IN CONTAINMENT PIPE AS SPECIFIED.
- FDV, SEE DETAIL M-25F. COORDINATE FIRE OR FIRE/SMOKE DAMPER RATING WITH FIRE OR SMOKE PARTITION RATING, TYPICAL.
- SEE DETAIL M-27H FOR FAN INSTALLATION DETAIL, TYPICAL.
- STEAM HEATING COIL LPC PIPE THROUGH FLOOR. LOCATE STEAM TRAP ASSEMBLY AT CEILING OF FLOOR BELOW, SEE DETAIL M-25L.
- LPC PIPE THROUGH FLOOR ABOVE WITH STEAM TRAP ASSEMBLY SUPPORTED BELOW SLAB.
- PROVIDE 1/2" X 1/2" WIRE MESH SCREEN WITH FRAME OVER 48" X 150" OPENING IN WALL AT DUCT PENETRATION.
- SPACE FOR TEMPERATURE CONTROL PANEL (6).
- 6" HPS INTO PRESSURE REDUCING STATIONS, SEE DETAIL M-28J FOR PIPING OF PRESSURE REDUCING STATIONS.
- PRESSURE RELIEF VENT PIPE FROM HPS (65 PSIG) REDUCING STATION.
- PRESSURE RELIEF VENT PIPE FROM LPS (30 PSIG) REDUCING STATION.
- LPC FROM HX-1 AND HX-2 THROUGH FLOOR.
- DIAPHRAGM EXPANSION TANK ON CONCRETE PAD.
- ROUTE DRAIN PAN PIPE TO FLOOR DRAIN, SEE DETAIL M-27-F, TYPICAL.
- 1" F.O.G. & 1" F.O.R. DOWN TO FUEL OIL PUMP ON LEVEL 9.

**NOTE:**  
 ACCESS SECTIONS ENTERING AND LEAVING SHALL BE A MINIMUM OF 24" WIDE. ACCESS SECTIONS SHALL BE INCREASED IN SIZE AS REQUIRED FOR AIR BLENDER APPLICATION. ACCESS SECTIONS SHALL HAVE FULL SIZE ACCESS DOORS - 24" WIDE AND SHALL BE HINGED WITH LATCHES. ACCESS SECTIONS AND/OR TRANSITION SECTIONS MAY BE FACTORY MANUFACTURED OR MAY BE FIELD FABRICATED BY SHEETMETAL CONTRACTOR.

**LEVEL 1 MECHANICAL EQUIPMENT ROOM PLAN**  
 SCALE: 1/4" = 1'-0"

**NOTE:** SEE DRAWINGS M-10 AND M-14 FOR CONTINUATION OF WORK ON LEVEL 1. SEE DRAWING M-8 FOR ADDITIONAL PIPE SIZES NOT INDICATED.

RECORD DRAWINGS DATE 10-22-88  
 STAGOS & FISHER CONSULTING ENGINEERS, INC.

M-20	
1-05	1-05
M-20	M-20