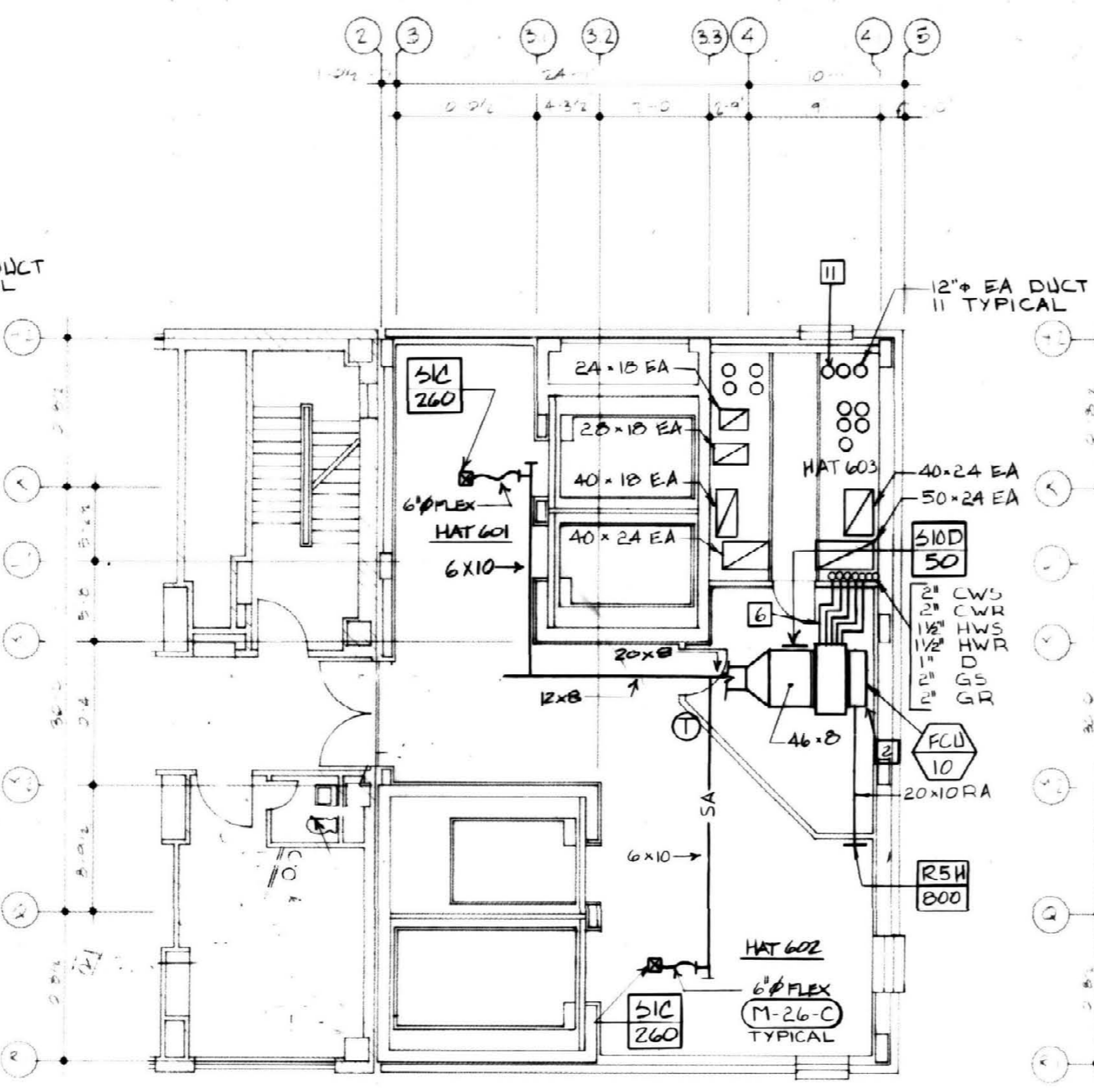
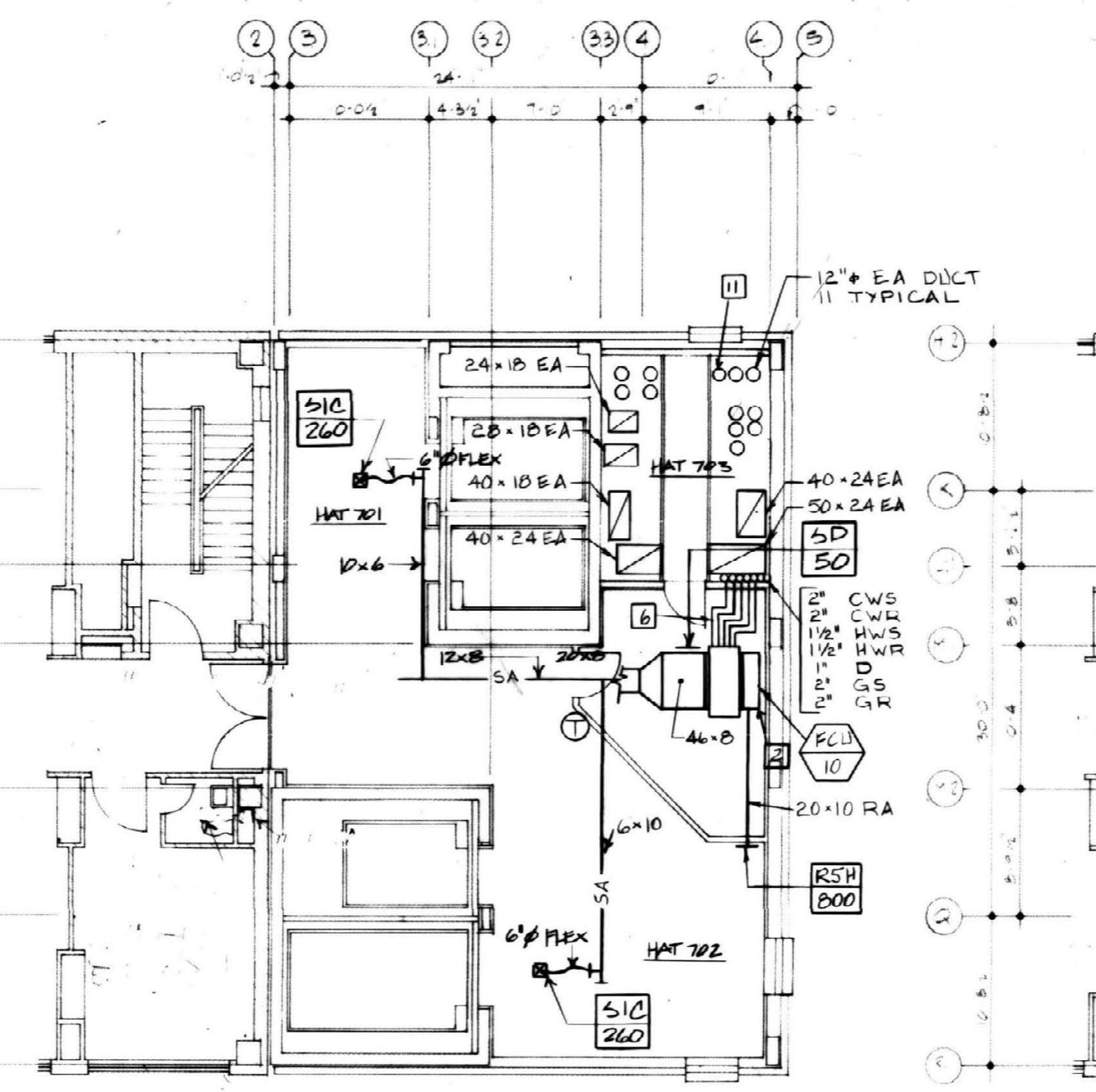


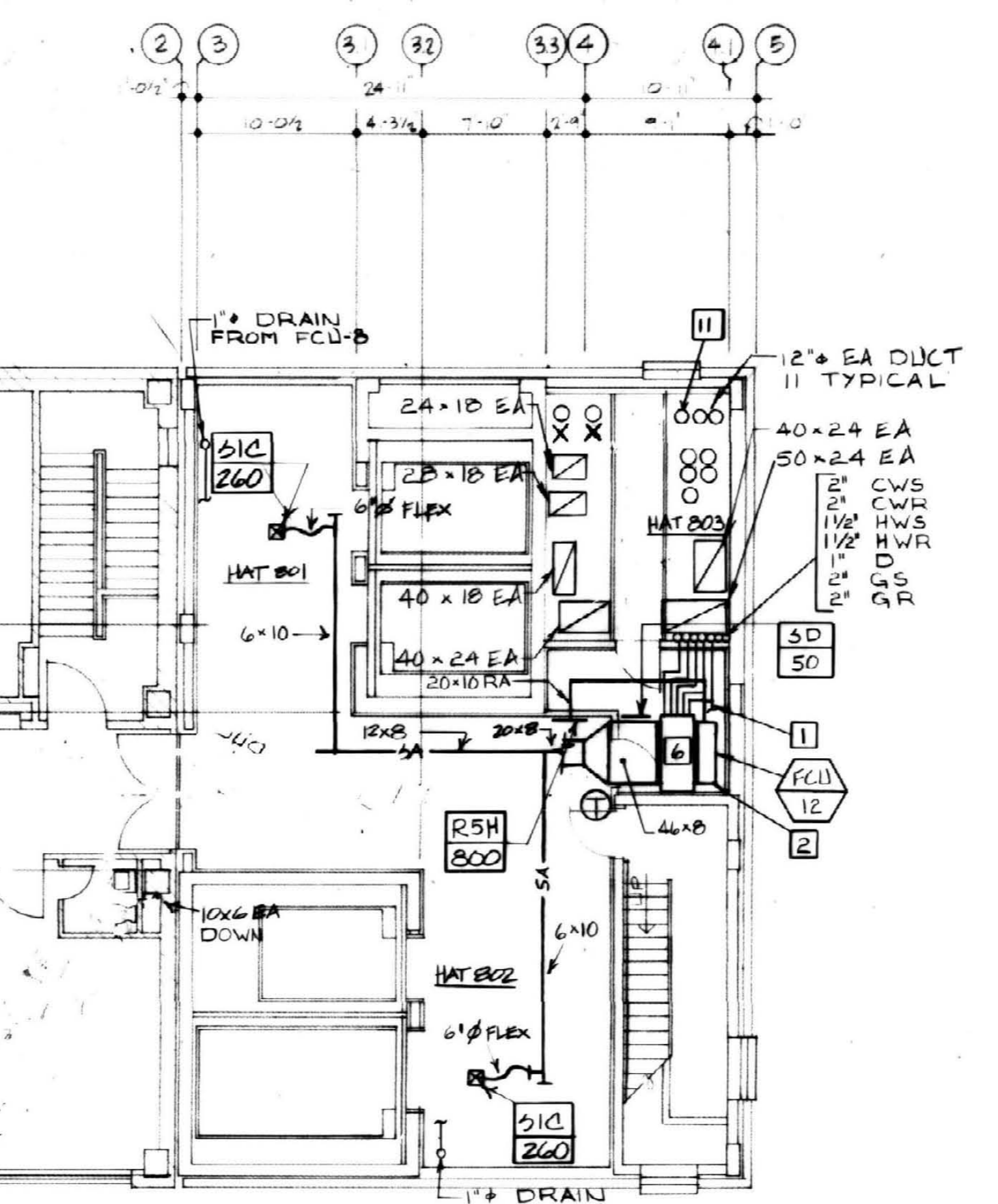
FIFTH FLOOR PLAN
SCALE: 1/8" = 1'-0"



SIXTH FLOOR PLAN
SCALE: 1/8" = 1'-0"



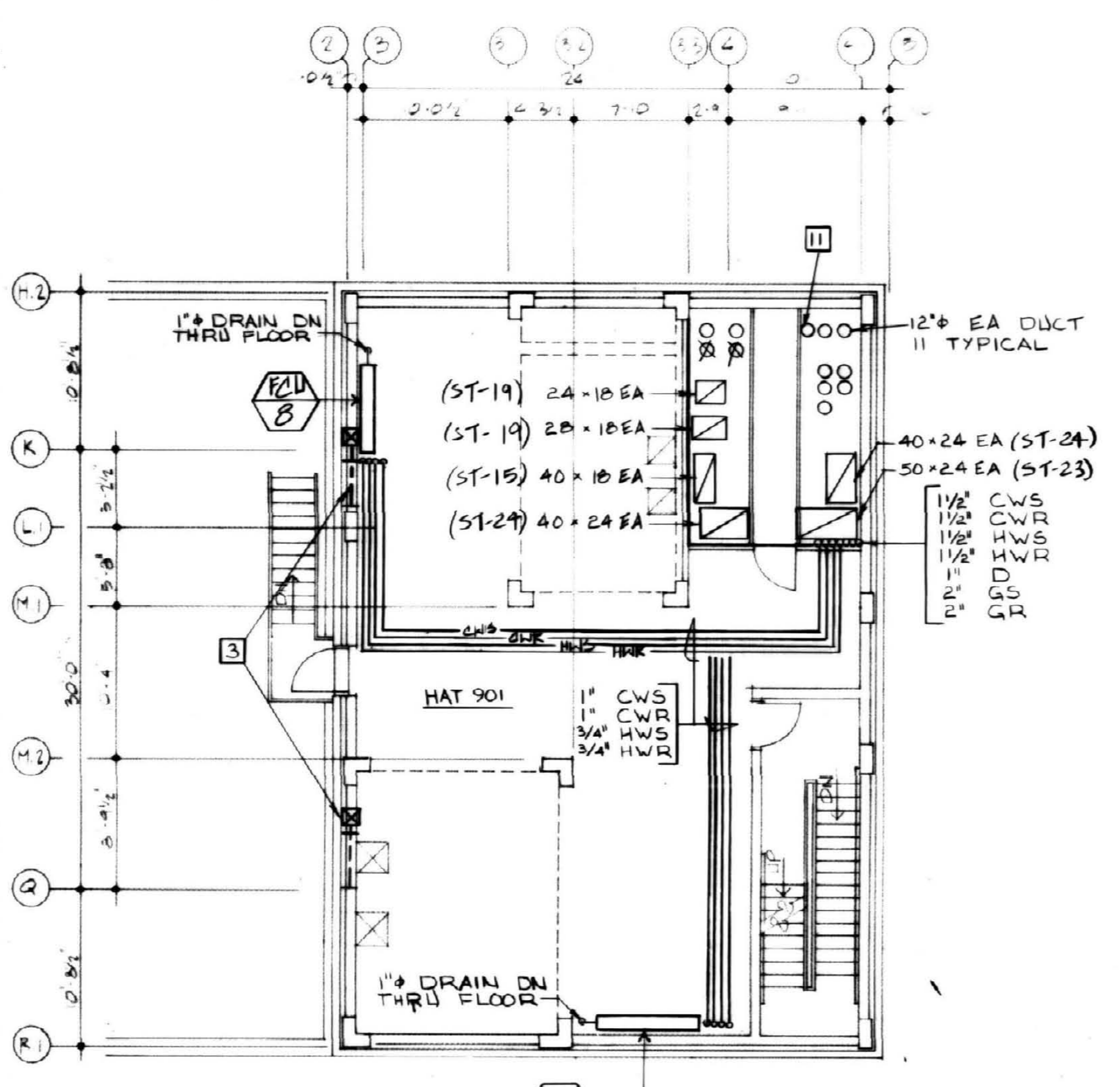
SEVENTH FLOOR PLAN
SCALE: 1/8" = 1'-0"



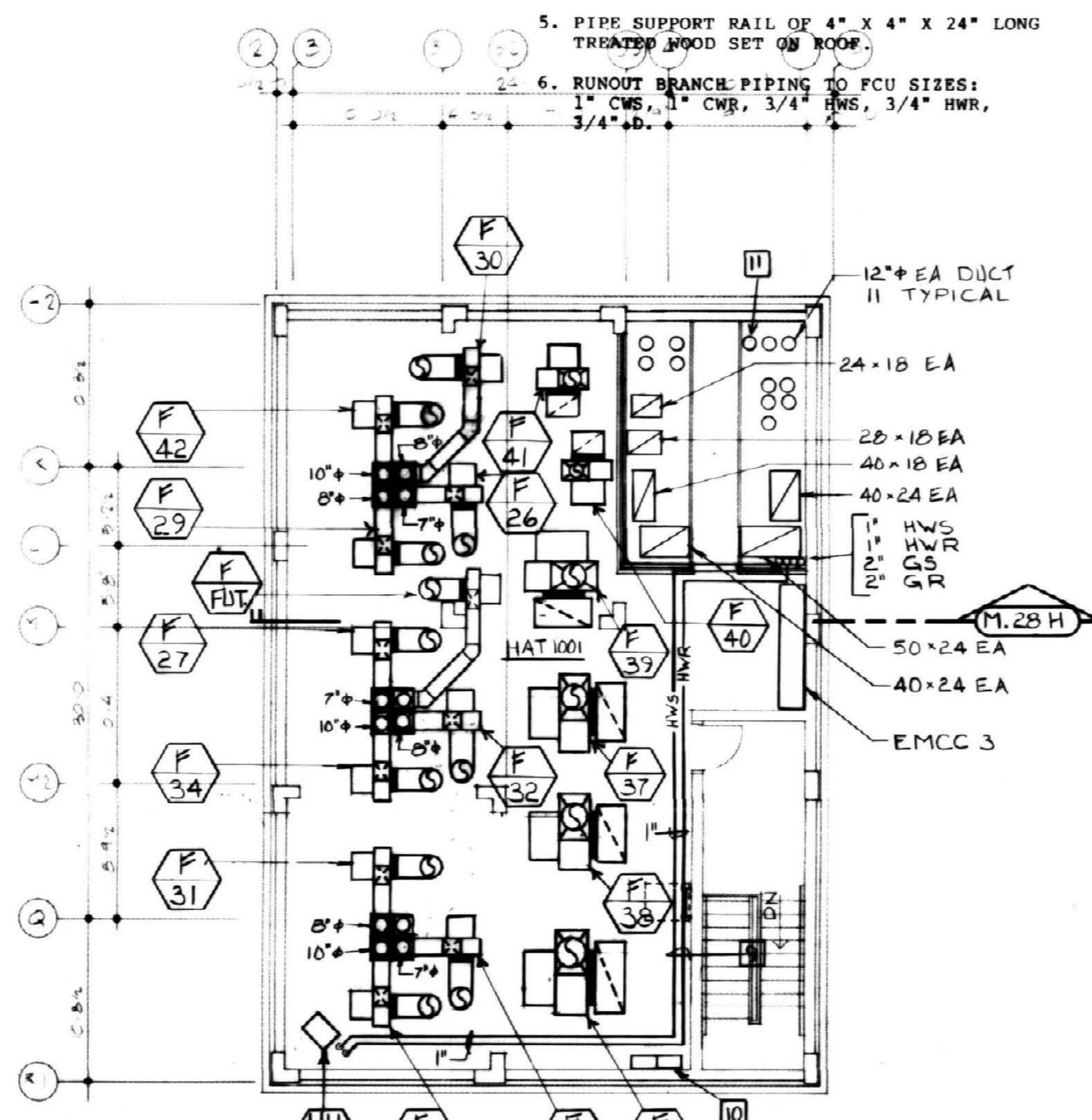
EIGHTH FLOOR PLAN
SCALE: 1/8" = 1'-0"

KEYED NOTES

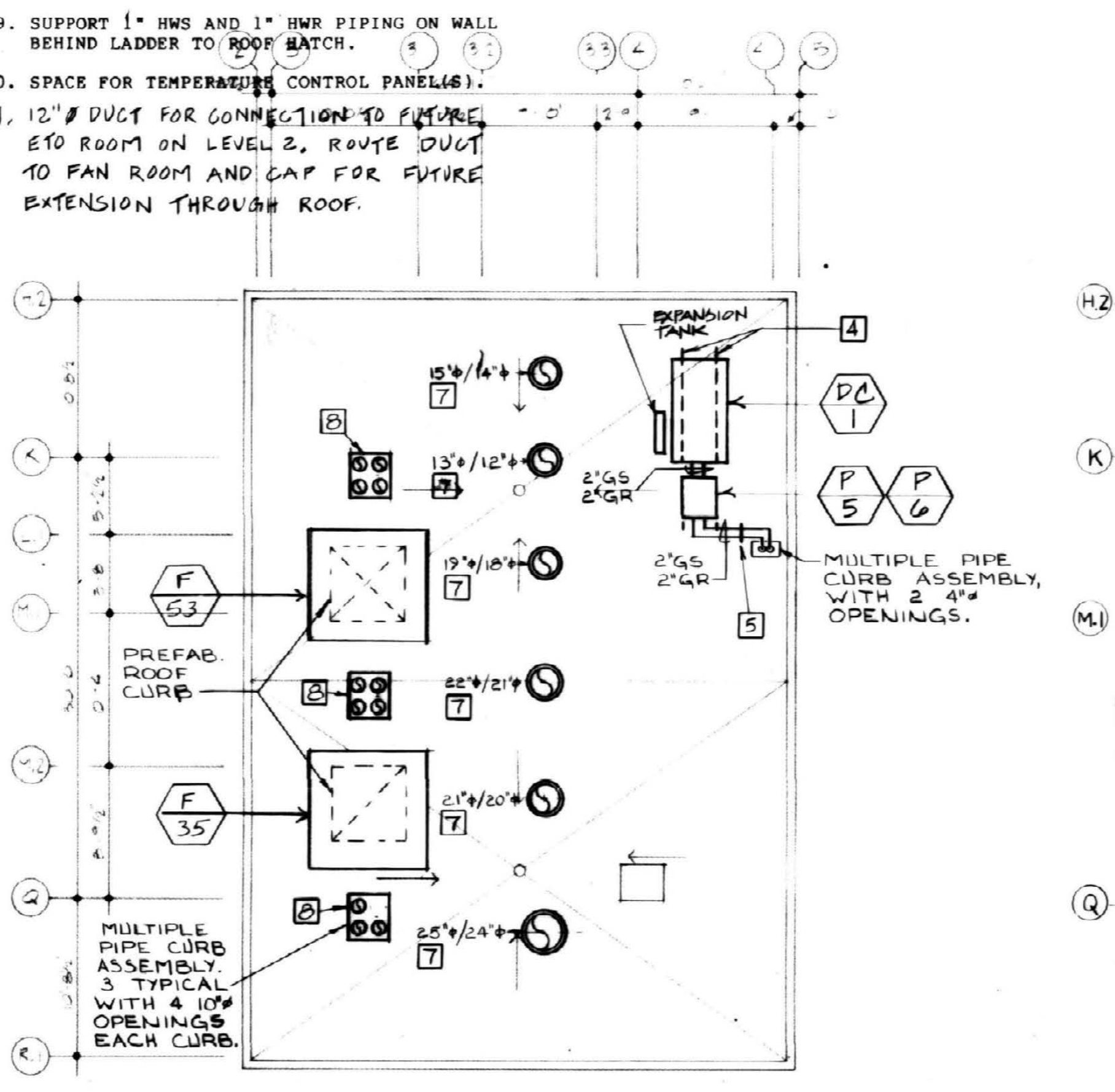
- ROUTE 1" DRAIN PIPE ABOVE CEILING TO DRAIN PIPES FOR FCU-7 AND FCU-8.
- 20" WIDE X 10" DEEP RETURN AIR PLENUM WITH FLEX CONNECTION, TYPICAL.
- 3'-9" X 2'-6" MOTORIZED DAMPER FOR ELEVATOR SHAFT VENTILATION. MOUNT DAMPER ON INSIDE OF LOUVER.
- MOUNT DRYCOOLER AND GLYCOL PUMP PACKAGE ON COMMON EQUIPMENT SUPPORT RAILS.
- PIPE SUPPORT RAIL OF 4" X 4" X 24" LONG TREATED WOOD SET ON ROOF.
- RUNOUT BRANCH PIPING TO FCU SIZES: 1" CWS, 1" CWR, 3/4" HWS, 3/4" HWR, 3/4" HWS, 3/4" HWR.
- 10' HIGH EXHAUST DUCT STACK AS INDICATED ON DETAIL M-270. SUPPORT STACK WITH GUY WIRES CONNECTED TO ROOF STRUCTURE. CONSTRUCT SHROUD DUCT OF ROUND GALVANIZED STEEL.
- 10' HIGH EXHAUST DUCT STACK AS INDICATED ON DETAIL M-270. SUPPORT STACK WITH GUY WIRES CONNECTED TO ROOF STRUCTURE. CONSTRUCT SHROUD DUCT OF GALVANIZED ROUND DUCTWORK OF 1" LARGER DIAMETER THAN EXHAUST DUCT SIZE INDICATED ON PLAN.
- SUPPORT 1" HWS AND 1" HWR PIPING ON WALL BEHIND LADDER TO ROOF HATCH.
- SPACE FOR TEMPERATURE CONTROL PANEL(S).
- 12" DUCT FOR CONNECTION TO FAN ROOM ON LEVEL 2, ROUTE DUCT TO FAN ROOM AND CAP FOR FUTURE EXTENSION THROUGH ROOF.



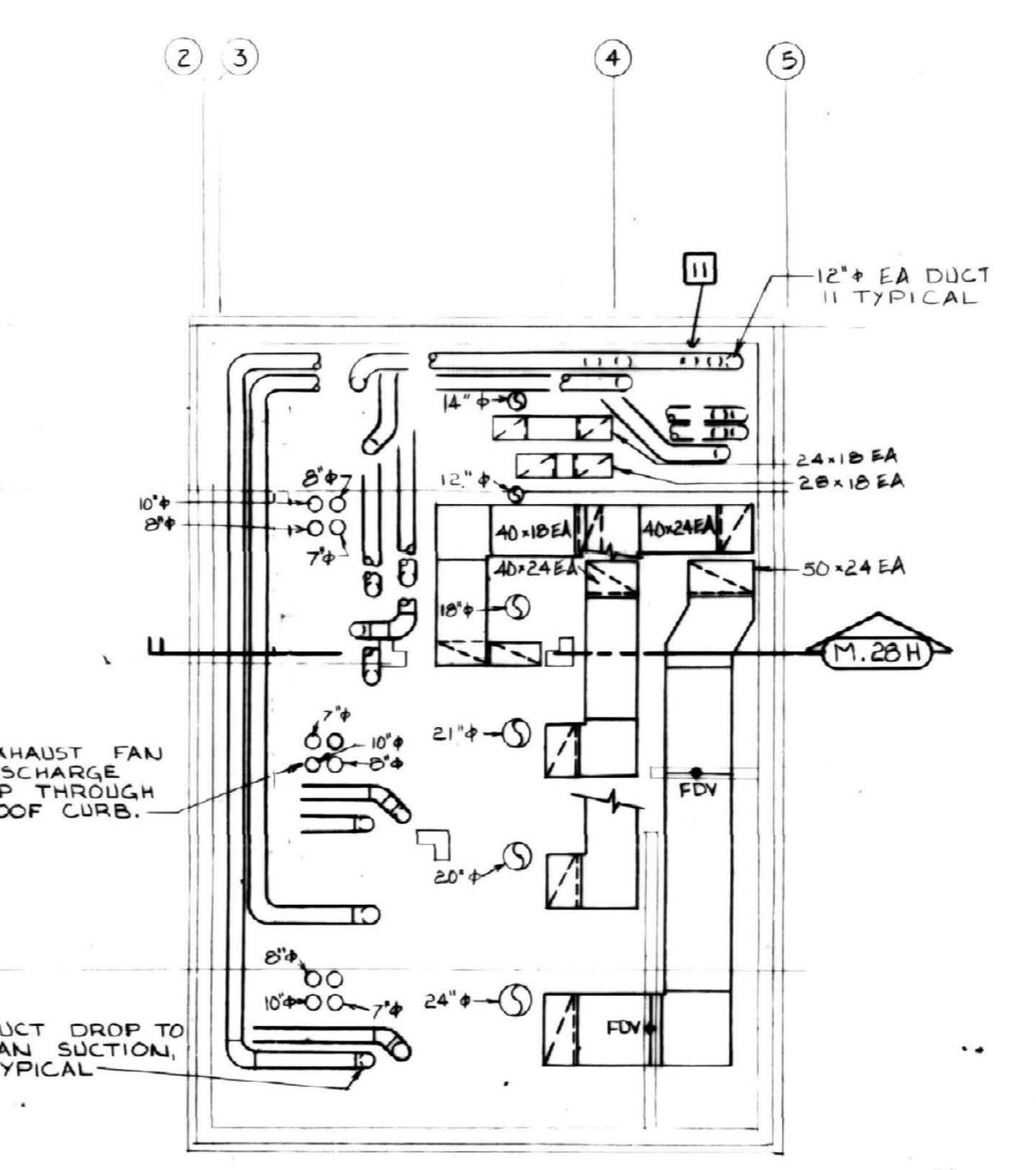
ELEVATOR MACHINE ROOM PLAN
SCALE: 1/8" = 1'-0"



FAN ROOM PLAN
SCALE: 1/8" = 1'-0"



FAN ROOM ROOF PLAN
SCALE: 1/8" = 1'-0"



HAT 1001 - FAN ROOM DUCT PLAN
SCALE: 1/8" = 1'-0"

NOTE: SEE FAN ROOM PLAN ON THIS SHEET FOR CONTINUATION OF DUCTWORK CONNECTIONS TO FANS.

ALBERT B. CHANDLER MEDICAL CENTER UNIVERSITY OF KENTUCKY HOSPITAL EXPANSION & RENOVATION



Hellmuth, Obata, & Kassabaum, Inc.
M-E-P Engineering
100 North Breese, St. Louis, Mo. 63102
Ph 314-451-1000

OMNI/CW Joint Venture Architects
In Association with Hellmuth, Obata, & Kassabaum
2365 Harrodsburg Road Lexington, KY 40504 Ph 606-223-3045
325 S Broadway Lexington, KY 40508 Ph 606-254-6823

Hanger Plan/Fan Room
HOSPITAL EXPANSION & RENOVATION
A. B. CHANDLER MEDICAL CENTER
PROJECT NO. 304.1
BID PACKAGE #2

University of Kentucky
Design & Construction
Approval
Director

FEB 05 1998
Date 11/97
Drawn by JEB
Check by
Revisions

M-18

RECORD DRAWINGS DATE 10-22-93

These record drawings have been prepared, in part, on the basis of information compiled and furnished by others. The Engineer will not be responsible for any errors or omissions which have been incorporated into this document as a result.

STAGGS & FISHER CONSULTING ENGINEERS, INC.