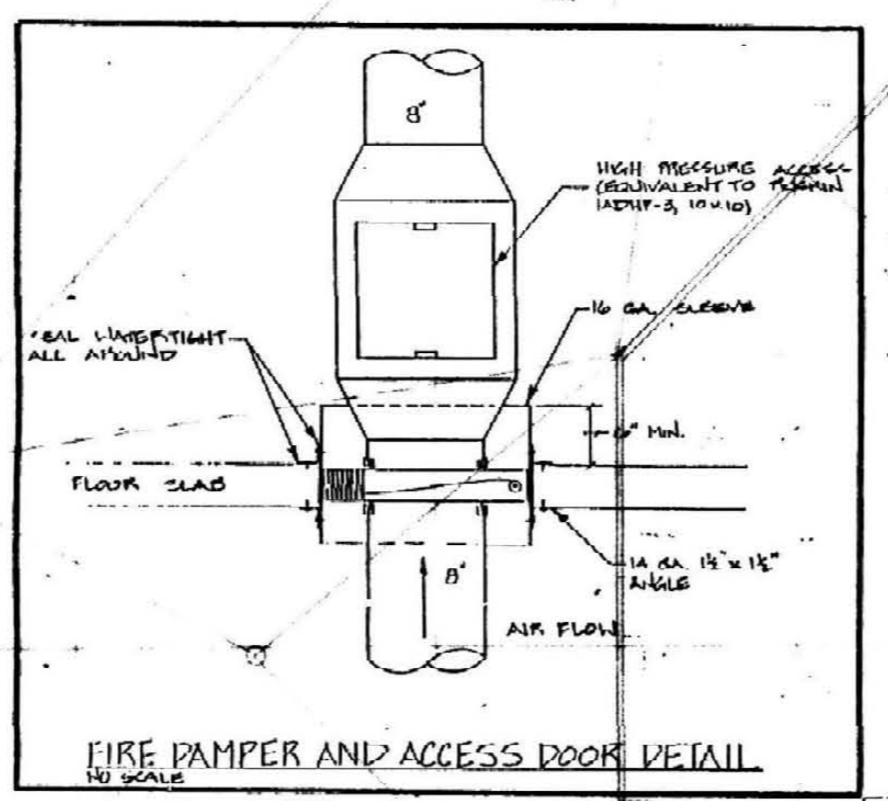



The following hot water coils shall be provided with 3-way hot water heating valves:
 Roof Plan
 Hangar East Offices, ATU-5, 2.1 GPM
 Hangar West Offices, ATU-5, 2.1 GPM
 All other heating coil valves to be 2-way.

SEE REVISED PLAN



- KEYED NOTES:**
1. AVIATION FUEL DISPENSER UNIT LOCATION
 2. 2" AVIATION FUEL SUPPLY AND RETURN PIPES THROUGH LEVEL 4 SLAB. CONNECT TO AVIATION FUEL DISPENSER. PROVIDE MULTIPLE PIPE ROOF CURB FOR PIPES THROUGH ROOF.
 3. 1" DRAIN PIPE EXTENDED OUT THROUGH WALL. STUB OUT OF WALL 12" AND TERMINATE WITH OPEN PIPE FOR CONDENSATE DRAINAGE ONTO ROOF.
 4. TRANSITION FROM 48 X 12 EA TO 28 X 18 EA AFTER PASSING THROUGH LEVEL 4.
 5. TRANSITION FROM 38 X 16 EA TO 40 X 24 EA AFTER PASSING THROUGH LEVEL 4, OFFSET TO NEW LOCATION AS INDICATED.
 6. TRANSITION FROM 56 X 18 EA TO 24 X 50 EA AFTER PASSING THROUGH LEVEL 4, OFFSET TO NEW LOCATION AS INDICATED.
 7. TRANSITION FROM 58 X 16 EA TO 48 X 18 EA AFTER PASSING THROUGH LEVEL 4, OFFSET TO NEW LOCATION AS INDICATED.
 8. TRANSITION FROM 16 X 8 EA TO 12" DIAMETER.
 9. PROVIDE 4" X 4" CONCRETE CURB AROUND EACH DUCT RECTANGULAR OPENING THROUGH FLOOR. PROVIDE PIPE SLEEVE FOR ROUND DUCTS.
 10. FAN MOUNTED IN WINDOW OPENING, PROVIDE INSULATED BLANK OFF PANEL FOR UNUSED PORTION OF OPENING.
 11. FAN MOUNTED ABOVE STAIR CEILING.
 12. UNIT HEATER MOUNTED ABOVE STAIR CEILING.
 13. 2" HWS AND 2" HWR DOWN THROUGH FLOOR.
 14. PROVIDE 18" DEEP INSULATED SHEET METAL PLENUM THROUGH WALL. FULL SIZE OF LOUVER. CONNECT EXHAUST DUCTS TO PLENUM.
 15. ROUTE CONDENSATE 1" DRAIN PIPE TO OUTSIDE THROUGH LOUVER.


REVISED PARTIAL PLAN - SHEET M-17 HANGER
 SCALE: 1/8" = 1'-0"



Hellmuth, Obata, & Kassabaum, Inc.
 M-E-P Engineering
 100 North Broadway, St. Louis, Mo. 63102 Ph 314-441-8800

OMNI/CMW Joint Venture Architects
 In Association with Hellmuth, Obata, & Kassabaum
 Omni Architects 2365 Harrodsburg Road, Lexington, KY 40504 Ph 606-223-5045
 Chisman-Villar-Woodward 326 S. Broadway, Lexington, KY 40508 Ph 606-254-6623

**HOSPITAL EXPANSION & RENOVATION
 A. S. CHANDLER MEDICAL CENTER**
 PROJECT NO. 304.1
 BID PACKAGE #2

University of Kentucky
 Design & Construction
 Approval

 Director
 FEB 23 1988

Date: 11/87
 Drawn by: JFB
 Check by:
 Revisions:

M-17