



Heilmuth, Obata, & Kassebaum, Inc.
M-E-P Engineering
 100 North Broadway, St. Louis, Mo. 63102
 Ph 314-461-1800

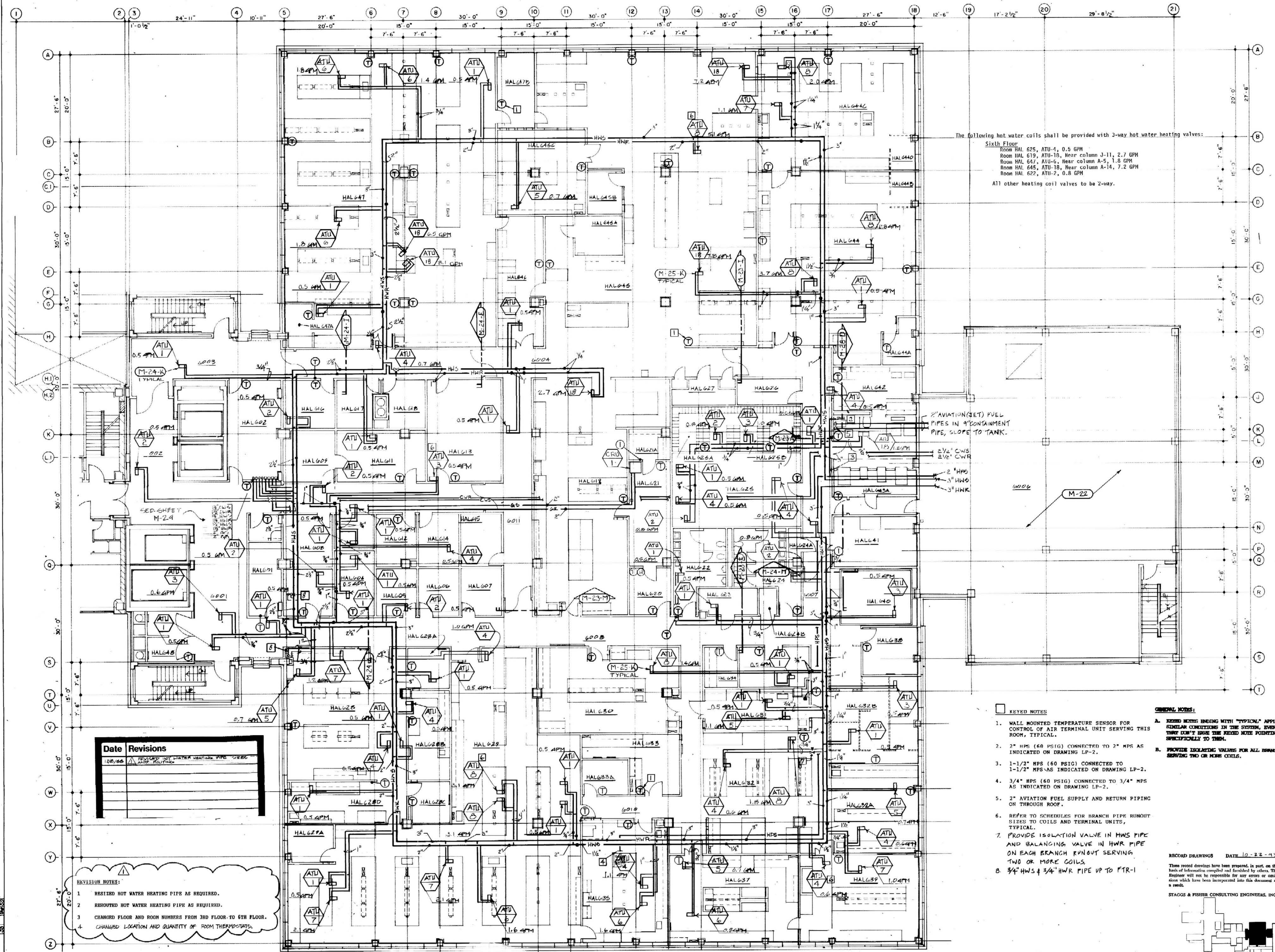
OMNI/CMW Joint Venture Architects
 In Association with Heilmuth, Obata, & Kassebaum
 2385 University Blvd., Lexington, KY 40502 Ph 606-253-3045
 305 S. Broadway, Lexington, KY 40508 Ph 606-254-6823

Third Level Piping Plan
 HOSPITAL EXPANSION & RENOVATION
 A. B. CHANDLER MEDICAL CENTER
 PROJECT NO. 304-1
 100 PACKAGE 8E

University of Kentucky
 Design & Construction
 Approval
 Director

Date: 11/8
 Drawn by: JF
 Check by:
 Revisions:

STAGOS & FISHER CONSULTING ENGINEERS, INC.
 M-16
 HOSPITAL, 100



The following hot water coils shall be provided with 3-way hot water heating valves:
 Sixth Floor
 Room HAL 625, ATU-1, 0.5 GPM
 Room HAL 619, ATU-18, Near column J-11, 2.7 GPM
 Room HAL 647, ATU-6, Near column A-5, 1.8 GPM
 Room HAL 645, ATU-18, Near column A-14, 7.2 GPM
 Room HAL 622, ATU-2, 0.8 GPM
 All other heating coil valves to be 2-way.

2" AVIATION (JET) FUEL PIPES IN 9" CONFINEMENT PIPE, SLOPE TO TANK.
 2" CW S 2 1/2" CWR
 2" HWS
 3" HWR

KEYED NOTES

1. WALL MOUNTED TEMPERATURE SENSOR FOR CONTROL OF AIR TERMINAL UNIT SERVING THIS ROOM, TYPICAL.
2. 3" HPS (60 PSIG) CONNECTED TO 2" MPS AS INDICATED ON DRAWING LP-2.
3. 1-1/2" HPS (60 PSIG) CONNECTED TO 1-1/2" MPS AS INDICATED ON DRAWING LP-2.
4. 3/4" HPS (60 PSIG) CONNECTED TO 3/4" MPS AS INDICATED ON DRAWING LP-2.
5. 2" AVIATION FUEL SUPPLY AND RETURN PIPING ON THROUGH ROOF.
6. REFER TO SCHEDULES FOR BRANCH PIPE RUNOUT SIZES TO COILS AND TERMINAL UNITS, TYPICAL.
7. PROVIDE ISOLATION VALVE IN HWS PIPE AND BALANCING VALVE IN HWR PIPE ON EACH BRANCH RUNOUT SERVING TWO OR MORE COILS.
8. 3/4" HWS & 3/4" HWR PIPE UP TO FTR-1

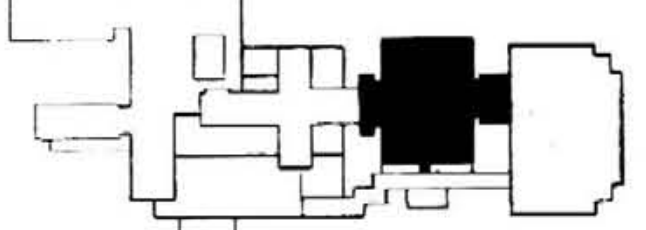
GENERAL NOTES:

- A. EXIST NOTES APPLY TO ALL SIMILAR CONDITIONS IN THE SYSTEM, EVEN THOSE THAT DON'T HAVE THE EXIST NOTE POINTING SPECIFICALLY TO THEM.
- B. PROVIDE ISOLATING VALVES FOR ALL BRANCH LINES SERVING TWO OR MORE COILS.

RECORD DRAWINGS DATE 10-22-93

These record drawings have been prepared, in part, on the basis of information compiled and furnished by others. The Engineer will not be responsible for any errors or omissions which have been incorporated into this document as a result.

STAGOS & FISHER CONSULTING ENGINEERS, INC.



SIXTH LEVEL PIPING PLAN
 SCALE: 1/8" = 1'-0"

KEY PLAN

| Date | Revisions |
|---------|--|
| 10/8/93 | REVISED HOT WATER HEATING PIPE SIZES AND ROUTING |
| | |
| | |
| | |
| | |

- REVISION NOTES:**
1. REVISED HOT WATER HEATING PIPE AS REQUIRED.
 2. REROUTED HOT WATER HEATING PIPE AS REQUIRED.
 3. CHANGED FLOOR AND ROOM NUMBERS FROM 3RD FLOOR TO 6TH FLOOR.
 4. CHANGED LOCATION AND QUANTITY OF ROOM THERMOSTATS.