

Helmut, Obata, & Kassebaum, Inc.
M-E-P Engineering
 160 Marsh Road, St. Louis, Mo. 63103
 Ph: 314-471-8000

OMNI/CMW Joint Venture Architects
 In Association with Helmut, Obata, & Kassebaum
 2385 Harrodsburg Road, Lexington, KY 40504 Ph: 606-223-3045
 358 S. Broadway, Lexington, KY 40508 Ph: 606-254-6523
 Omni Architects
 Christopher Miller-Woodford

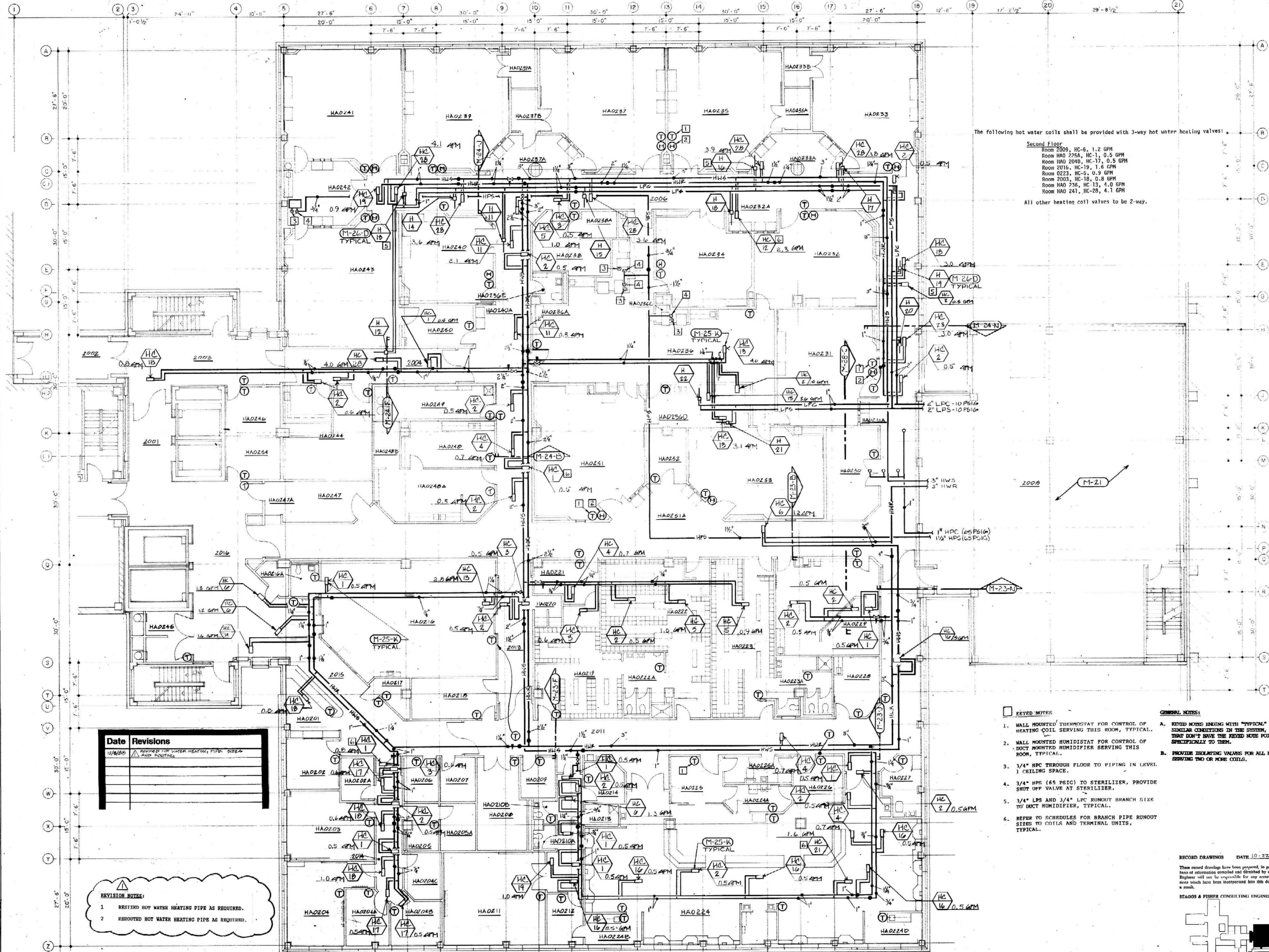
Second Level Piping Plan
 HOSPITAL EXPANSION & RENOVATION
 A. B. CHANDLER MEDICAL CENTER
 PROJECT NO. 304-1
 BID PACKAGE #2

University of Kentucky
 Design & Construction
 Approval

 Director

Date: 11/8
 Drawn by: JEE
 Check by:
 Revisions:

M-15
 HOSPITAL ADDITION



The following hot water coils shall be provided with 3-way hot water heating valves:
 Second Floor
 Room 2009, HC-6, 1.2 GPM
 Room HAO 225A, HC-1, 0.5 GPM
 Room HAO 204B, HC-17, 0.5 GPM
 Room 2016, HC-19, 1.6 GPM
 Room 2023, HC-5, 0.9 GPM
 Room 2003, HC-18, 0.8 GPM
 Room HAO 236, HC-13, 4.0 GPM
 Room HAO 241, HC-28, 4.1 GPM
 All other heating coil valves to be 2-way.

Date	Revisions
11/8/09	REVISED FOR WATER HEATING PIPE SIZE AND ROUTING

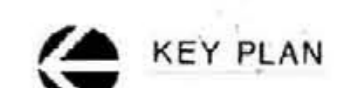
REVISION NOTES:
 1 RESIZED HOT WATER HEATING PIPE AS REQUIRED.
 2 REROUTED HOT WATER HEATING PIPE AS REQUIRED.

- KEYED NOTES:**
- WALL MOUNTED THERMOSTAT FOR CONTROL OF HEATING COIL SERVING THIS ROOM, TYPICAL.
 - WALL MOUNTED HUMIDISTAT FOR CONTROL OF DUCT MOUNTED HUMIDIFIER SERVING THIS ROOM, TYPICAL.
 - 3/4" HPC THROUGH FLOOR TO PIPING IN LEVEL 1 CEILING SPACE.
 - 3/4" HPS (65 PSIG) TO STERILIZER, PROVIDE SHUT OFF VALVE AT STERILIZER.
 - 3/4" LPS AND 3/4" LPC RUNOUT BRANCH SIZE TO DUCT HUMIDIFIER, TYPICAL.
 - REFER TO SCHEDULES FOR BRANCH PIPE RUNOUT SIZES TO COILS AND TERMINAL UNITS, TYPICAL.

- GENERAL NOTES:**
- KEYED NOTES ENDING WITH "TYPICAL" APPLY TO ALL SIMILAR CONDITIONS IN THE SYSTEM, EVEN THOSE THAT DON'T HAVE THE KEYED NOTE POINTING SPECIFICALLY TO THEM.
 - PROVIDE EXHAUST VALVES FOR ALL BRANCH LINES SERVING TWO OR MORE COILS.

RECORD DRAWINGS DATE 10-22-09
 These record drawings have been prepared, in part, on the basis of information compiled and furnished by others. The Engineer will not be responsible for any errors or omissions which have been incorporated into this document as a result.
 STAGOS & FISHER CONSULTING ENGINEERS, INC.

SECOND LEVEL PIPING PLAN
 SCALE: 1/8" = 1'-0"



M-15	2-BP	2-SP
M-15	M-15	M-15
1-GRD	1-GRD	1-GRD