



Heilmuth, Obata, & Kassabaum, Inc.
M-E-P Engineering
100 North Broadway, St. Louis, Mo. 63102
Ph. 417-487-8000

OMNIC/MW Joint Venture Architects
In Association with Heilmuth, Obata, & Kassabaum
2865 Hancock Road Lexington, Ky. 40504
Ph. 502-273-3845
Fax: 502-273-3845

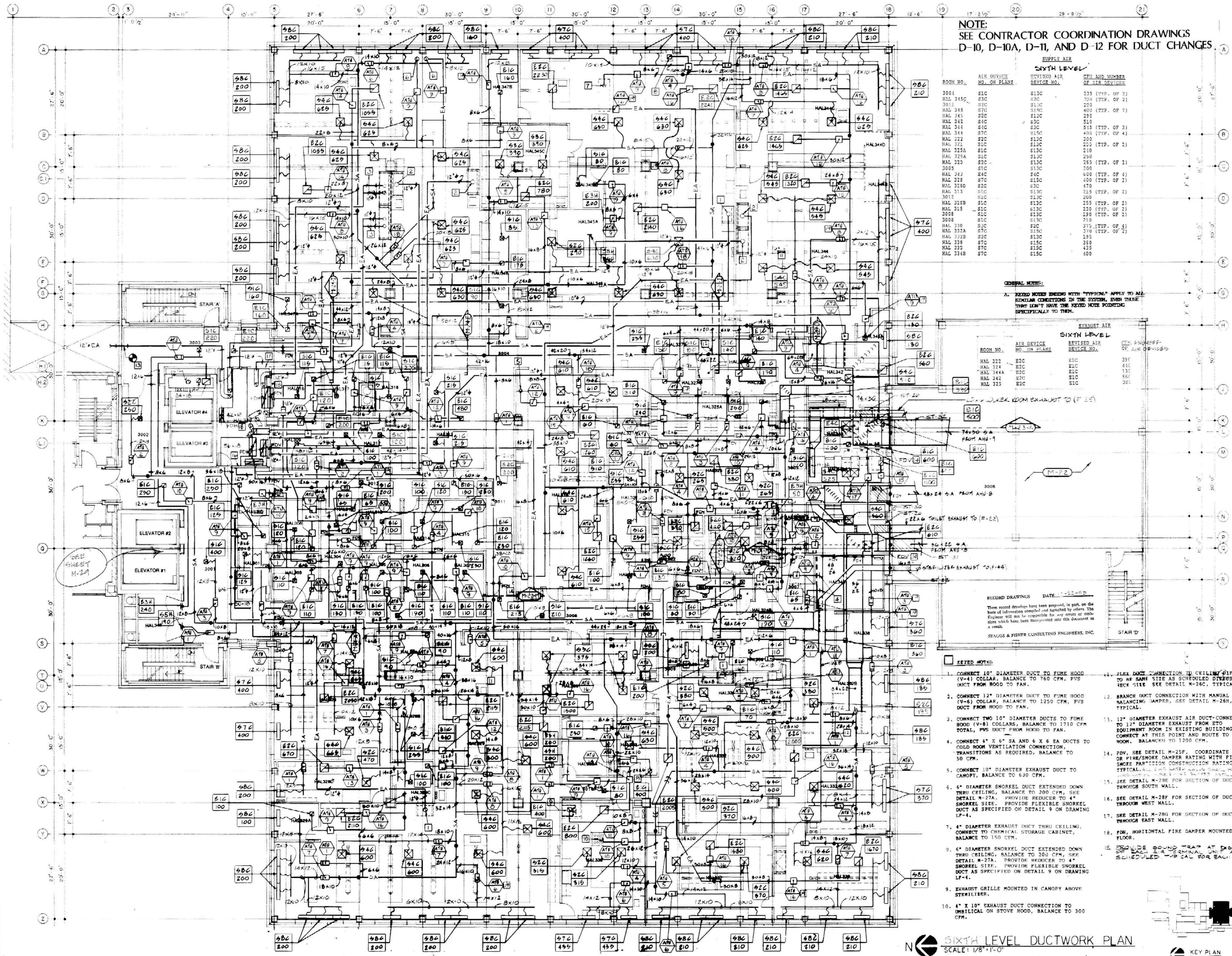
Third Level Ductwork Plan
HOSPITAL EXPANSION & RENOVATION
ALBERT B. CHANDLER MEDICAL CENTER
PROJECT NO. 304.1
BID PACKAGE #2

University of Kentucky
Design & Construction
Approval
Director
Wendy K. Smith

Date: 1/27/97
Drawn by: JTB
Check by:
Revisions:

M-12
HOSPITAL ADMINISTRATION

ALBERT B. CHANDLER MEDICAL CENTER UNIVERSITY OF KENTUCKY HOSPITAL EXPANSION & RENOVATION



NOTE:
SEE CONTRACTOR COORDINATION DRAWINGS
D-10, D-10A, D-11, AND D-12 FOR DUCT CHANGES.

SUPPLY AIR

ROOM NO.	AIR DEVICE NO. ON PLANS	REVISED AIR DEVICE NO.	CFM AND NUMBER OF AIR DEVICES
3004	S1C	S13C	235 (TYP. OF 2)
HAL 345C	S3C	S7C	300 (TYP. OF 2)
3001L	S3C	S13C	200
HAL 345	S1C	S13C	400 (TYP. OF 7)
HAL 345	S2C	S12C	280
HAL 342	S4C	S3C	510
HAL 344	S1C	S1C	515 (TYP. OF 3)
HAL 344	S7C	S15C	400 (TYP. OF 4)
HAL 322	S2C	S12C	300
HAL 321	S1C	S12C	225 (TYP. OF 2)
HAL 325A	S1C	S12C	210
HAL 325	S1C	S12C	250
HAL 325	S2C	S13C	255 (TYP. OF 2)
3005	S1C	S13C	200
HAL 343	S4C	S4C	400 (TYP. OF 4)
HAL 328	S7C	S15C	400 (TYP. OF 2)
HAL 328D	S2C	S3C	470
HAL 313	S1C	S13C	215 (TYP. OF 2)
3001	S1C	S13C	200
HAL 328B	S1C	S13C	255 (TYP. OF 2)
HAL 315	S1C	S13C	230 (TYP. OF 2)
3008	S1C	S13C	190 (TYP. OF 2)
3008	S1C	S13C	710
HAL 330	S1C	S2C	375 (TYP. OF 4)
HAL 332A	S7C	S15C	370 (TYP. OF 2)
HAL 332B	S2C	S13C	195
HAL 338	S1C	S15C	350
HAL 335	S7C	S15C	435
HAL 334B	S7C	S15C	400

GENERAL NOTES:

A. KEYED NOTES ENDING WITH "TYPICAL" APPLY TO ALL SIMILAR CONDITIONS IN THE SYSTEM, EVEN THOSE THAT DON'T HAVE THE KEYED NOTE POINTING SPECIFICALLY TO THEM.

EXHAUST AIR

ROOM NO.	AIR DEVICE NO. ON PLANS	REVISED AIR DEVICE NO.	CFM AND NUMBER OF AIR DEVICES
HAL 322	E2C	E1C	395
HAL 324	E2C	E1C	445
HAL 344A	E2C	E1C	135
HAL 342	E7C	E1C	565
HAL 325	E2C	E1C	385

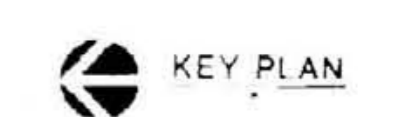
RECORD DRAWING DATE: 1-22-97

These record drawings have been prepared, in part, on the basis of information compiled and furnished by others. The Engineer will not be responsible for any errors or omissions which have been incorporated into this document as a result.

STAUGGS & FISHER CONSULTING ENGINEERS, INC.

- KEYED NOTES**
- CONNECT 10" DIAMETER DUCT TO FUME HOOD (V-4) COLLAR, BALANCE TO 760 CFM. PVS UNIT FROM HOOD TO FAN.
 - CONNECT 12" DIAMETER DUCT TO FUME HOOD (V-6) COLLAR, BALANCE TO 1250 CFM. PVS DUCT FROM HOOD TO FAN.
 - CONNECT TWO 10" DIAMETER DUCTS TO FUME HOOD (V-8) COLLARS, BALANCE TO 1710 CFM TOTAL. PVS DUCT FROM HOOD TO FAN.
 - CONNECT 6" X 6" SA AND 6" X 6" EA DUCTS TO COLD ROOM VENTILATION CONNECTION. TRANSITIONS AS REQUIRED, BALANCE TO 50 CFM.
 - CONNECT 10" DIAMETER EXHAUST DUCT TO CANOPY, BALANCE TO 630 CFM.
 - 6" DIAMETER SNORKEL DUCT EXTENDED DOWN THRU CEILING, BALANCE TO 200 CFM. SEE DETAIL M-27A. PROVIDE REDUCER TO 4" SNORKEL SIZE. PROVIDE FLEXIBLE SNORKEL DUCT AS SPECIFIED ON DETAIL 9 ON DRAWING LF-4.
 - 4" DIAMETER EXHAUST DUCT THRU CEILING. CONNECT TO CHEMICAL STORAGE CABINET, BALANCE TO 150 CFM.
 - 6" DIAMETER SNORKEL DUCT EXTENDED DOWN THRU CEILING, BALANCE TO 200 CFM. SEE DETAIL M-27A. PROVIDE REDUCER TO 4" SNORKEL SIZE. PROVIDE FLEXIBLE SNORKEL DUCT AS SPECIFIED ON DETAIL 9 ON DRAWING LF-4.
 - EXHAUST GRILLE MOUNTED IN CANOPY ABOVE STERILIZER.
 - 4" X 10" EXHAUST DUCT CONNECTION TO UNBLOCK ON STOVE HOOD, BALANCE TO 300 CFM.
 - FLEX DUCT CONNECTION TO CEILING DIFFUSER TO SAME SIZE AS SCHEDULED DISPENSER CHECK SIZE SEE DETAIL M-25C, TYPICAL.
 - BRANCH DUCT CONNECTION WITH MANUAL BALANCING DAMPER, SEE DETAIL M-26H, TYPICAL.
 - 12" DIAMETER EXHAUST AIR DUCT-CONNECTED TO 12" DIAMETER EXHAUST FROM STO EQUIPMENT ROOM IN EXISTING BUILDING. CONNECT AT THIS POINT AND ROUTE TO FAN ROOM. BALANCE TO 1200 CFM.
 - PVS, SEE DETAIL M-25F. COORDINATE FIRE OR FIRE/SMOKE DAMPER RATING WITH FIRE OR SMOKE PARTITION CONSTRUCTION RATING. TYPICAL SEE DETAIL M-25F FOR CONNECTIONS TO PARTITION.
 - SEE DETAIL M-28F FOR SECTION OF DUCTWORK THROUGH SOUTH WALL.
 - SEE DETAIL M-28F FOR SECTION OF DUCTWORK THROUGH WEST WALL.
 - SEE DETAIL M-28F FOR SECTION OF DUCTWORK THROUGH EAST WALL.
 - FBI, HORIZONTAL FIRE DAMPER MOUNTED IN FLOOR.
 - PROVIDE SOUND TRAP AT DISCHARGE OF EACH AIR TERMINAL UNIT AS SCHEDULED -UP CALL FOR EACH ATUT.

SIXTH LEVEL DUCTWORK PLAN
SCALE: 1/8"=1'-0"



M-12
3-BP 3-20-97
3-FN 3-27-97
1-GRD 1-22-97
M-12 M-12-97