

Helmut, Obata, & Kassabaum, Inc.
M-E-P Engineering
 100 North Broadway, St. Louis, Mo. 63102
 Ph: 314-421-8000

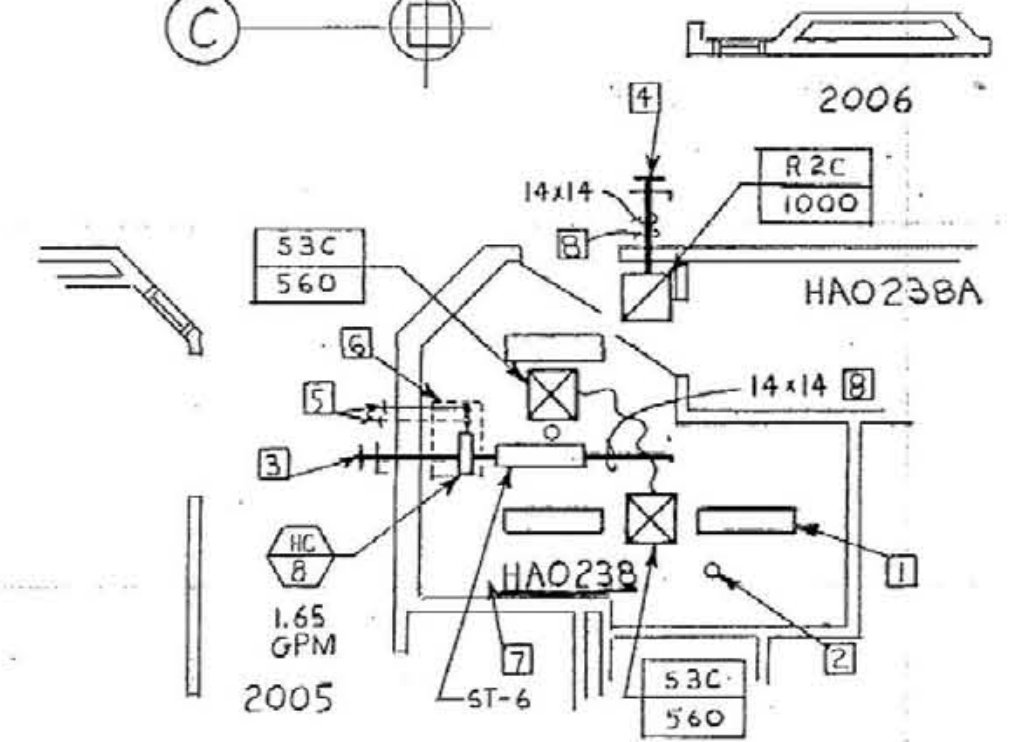
OMNI/CW Joint Venture Architects
 In Association with Helmut, Obata, & Kassabaum
 2385 Harborside Road, Lexington, KY 40504 Ph: 606-253-3045
 300 S. Embassy, Lexington, KY 40508 Ph: 606-251-6653

Second Level Ductwork Plan
 HOSPITAL EXPANSION & RENOVATION
 A. B. CHANDLER MEDICAL CENTER
 PROJECT NO. 304-1
 BID PACKAGE #2

University of Kentucky
 Design & Construction
 APPROVED
 Director
 FEB 5 1998

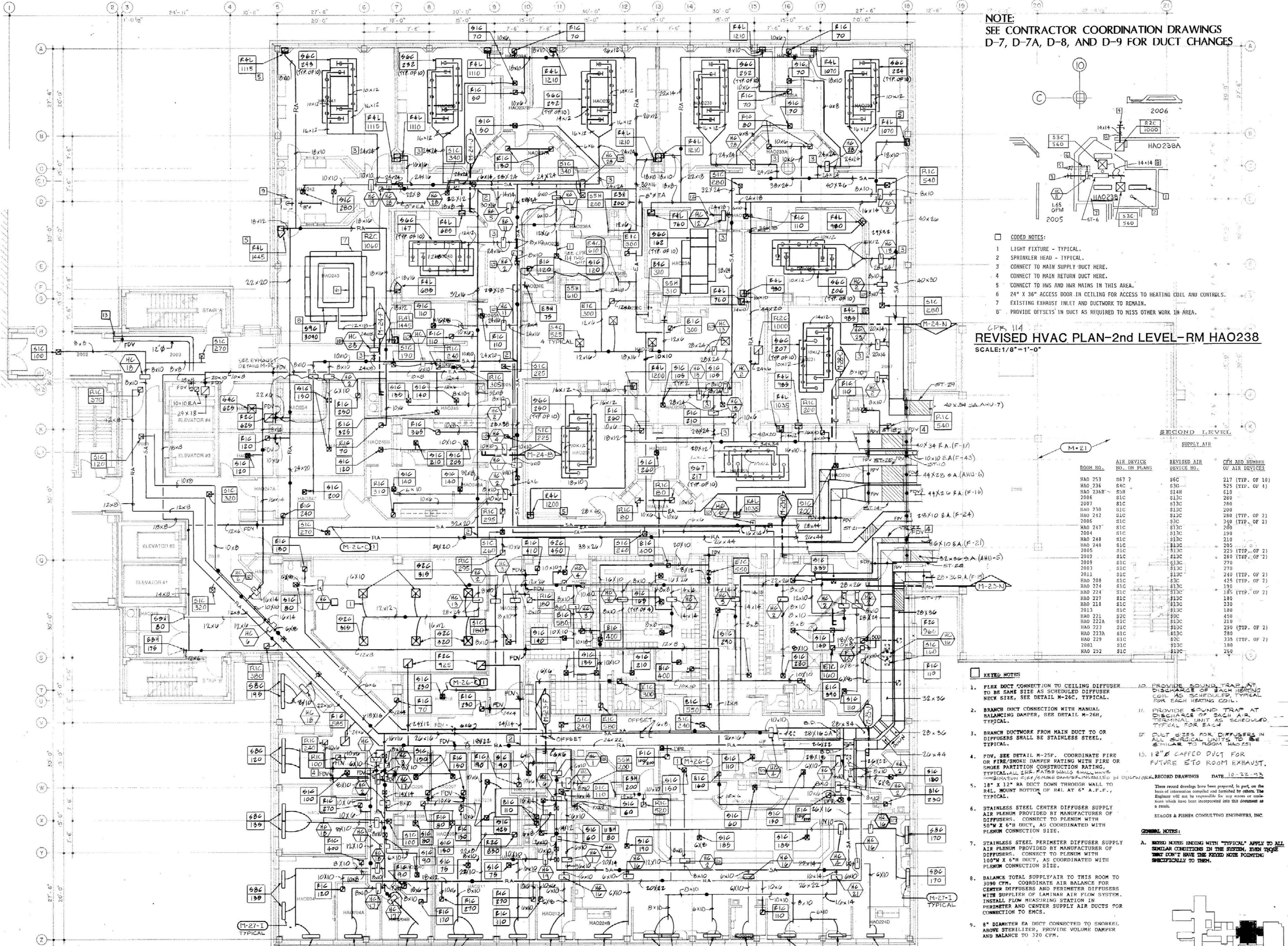
Date: 11/97
 Drawn by: JEB
 Check by:
 Revisions:
M-11
 A-2 11/97
 HOSPITAL ADDITION

NOTE:
 SEE CONTRACTOR COORDINATION DRAWINGS
 D-7, D-7A, D-8, AND D-9 FOR DUCT CHANGES



- CODED NOTES:**
- 1 LIGHT FIXTURE - TYPICAL.
 - 2 SPRINKLER HEAD - TYPICAL.
 - 3 CONNECT TO MAIN SUPPLY DUCT HERE.
 - 4 CONNECT TO MAIN RETURN DUCT HERE.
 - 5 CONNECT TO HWS AND HWR MAINS IN THIS AREA.
 - 6 24" X 36" ACCESS DOOR IN CEILING FOR ACCESS TO HEATING COIL AND CONTROLS.
 - 7 EXISTING EXHAUST INLET AND DUCTWORK TO REMAIN.
 - 8 PROVIDE OFFSETS IN DUCT AS REQUIRED TO MISS OTHER WORK IN AREA.

REVISED HVAC PLAN-2nd LEVEL-RM HAO238
 SCALE: 1/8"=1'-0"



ROOM NO.	AIR DEVICE NO. ON PLANS	REVISED AIR DEVICE NO.	CFM AND NUMBER OF AIR DEVICES
HAO 253	567 ?	566	217 (TYP. OF 10)
HAO 236	544	536	525 (TYP. OF 4)
HAO 236B	55H	514H	610
2006	51C	513C	280
2007	51C	513C	340
HAO 230	51C	513C	200
HAO 242	51C	513C	280 (TYP. OF 2)
2006	51C	513C	340
2005	51C	513C	340
2004	51C	513C	190
HAO 248	51C	513C	210
HAO 248	51C	513C	205
HAO 212A	51C	513C	225 (TYP. OF 2)
2002	51C	513C	260 (TYP. OF 2)
2009	51C	513C	270
2003	51C	513C	270
2013	51C	513C	240 (TYP. OF 2)
HAO 208	51C	513C	425 (TYP. OF 2)
HAO 224	51C	513C	190
HAO 224	51C	513C	185 (TYP. OF 2)
HAO 227	51C	513C	180
HAO 218	51C	513C	230
2013	51C	513C	180
HAO 221	52C	59C	450
HAO 222A	51C	513C	210
HAO 223	51C	513C	230 (TYP. OF 2)
HAO 223A	51C	513C	480
HAO 229	51C	513C	335 (TYP. OF 2)
2005	51C	513C	340
HAO 252	51C	513C	260

- KEYED NOTES:**
1. FLEX DUCT CONNECTION TO CEILING DIFFUSER TO BE SAME SIZE AS SCHEDULED DIFFUSER NECK SIZE, SEE DETAIL M-26C, TYPICAL.
 2. BRANCH DUCT CONNECTION WITH MANUAL BALANCING DAMPER, SEE DETAIL M-26H, TYPICAL.
 3. BRANCH DUCTWORK FROM MAIN DUCT TO OR DIFFUSERS SHALL BE STAINLESS STEEL, TYPICAL.
 4. FDN, SEE DETAIL M-25F. COORDINATE FIRE OR FIRE/SMOKE DAMPER RATING WITH FIRE OR SMOKE PARTITION CONSTRUCTION RATING. TYPICAL 2 1/2" RATED WALLS SHALL HAVE COMBINATION FIRE/SMOKE DAMPER. INSTALLATION OF DAMPER SHALL BE IN ACCORDANCE WITH MANUFACTURER'S RECORD DRAWINGS. DATE 10-22-93
 5. 18" X 12" RA DUCT DOWN THROUGH WALL TO RAIL MOUNT BOTTOM OF RAIL AT 6" A.F.P., TYPICAL.
 6. STAINLESS STEEL CENTER DIFFUSER SUPPLY AIR PLENUM PROVIDED BY MANUFACTURER OF DIFFUSERS. CONNECT TO PLENUM WITH 50"W X 6"H DUCT, AS COORDINATED WITH PLENUM CONNECTION SIZE.
 7. STAINLESS STEEL PERIMETER DIFFUSER SUPPLY AIR PLENUM PROVIDED BY MANUFACTURER OF DIFFUSERS. CONNECT TO PLENUM WITH 100"W X 6"H DUCT, AS COORDINATED WITH PLENUM CONNECTION SIZE.
 8. BALANCE TOTAL SUPPLY AIR TO THIS ROOM TO 3090 CFM. COORDINATE AIR BALANCE FOR CENTER DIFFUSERS AND PERIMETER DIFFUSERS WITH SUPPLIER OF LAMINAR AIR FLOW SYSTEM. INSTALL FLOW MEASURING STATION IN PERIMETER AND CENTER SUPPLY AIR DUCTS FOR CONNECTION TO EMCS.
 9. 8" DIAMETER EA DUCT CONNECTED TO SNORKEL ABOVE STERILIZER, PROVIDE VOLUME DAMPER AND BALANCE TO 320 CFM.
- GENERAL NOTES:**
10. PROVIDE SOUND TRAP AT DISCHARGE OF EACH HEATING COIL AS SCHEDULED TYPICAL FOR EACH HEATING COIL.
 11. PROVIDE SOUND TRAP AT DISCHARGE OF EACH AIR TERMINAL UNIT AS SCHEDULED TYPICAL FOR EACH.
 12. DUCT SIZES FOR DIFFUSERS IN ALL SURGICAL UNITS TO BE SIMILAR TO ROOM HAO238.
 13. 12" CAFFED DUCT FOR FUTURE ETO ROOM EXHAUST.
- GENERAL NOTES:**
- A. KEYED NOTES ENDING WITH "TYPICAL" APPLY TO ALL SIMILAR CONDITIONS IN THE SYSTEM. EACH CASE MUST NOT HAVE THE KEYED NOTE POINTING SPECIFICALLY TO THEM.

SECOND LEVEL DUCTWORK PLAN
 SCALE: 1/8"=1'-0"

