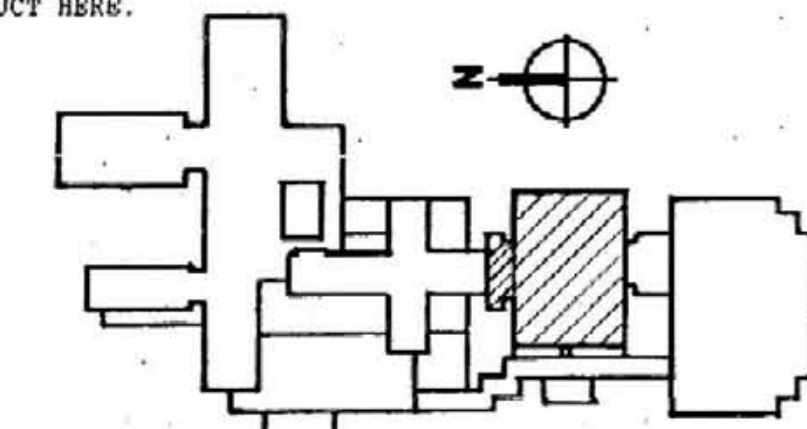


- CODED NOTES:**
- CONNECT TO EXISTING MAIN S.A. DUCT HERE. REDUCE DUCT DEPTH TO 10" HERE. INCREASE DUCT DEPTH IMMEDIATELY AFTER BALANCING DAMPER.
 - CONNECT TO EXISTING MAIN S.A. DUCT HERE.
 - CONNECT TO EXISTING MAIN R.A. DUCT HERE.
 - CONNECT BRANCH R.A. DUCT SERVING ROOM HAC 124A HERE.
 - ST-16 IN MAIN R.A. DUCT HERE.
 - DRYWALL CEILING IN THIS ROOM. INSTALL ACCESS DOORS IN CEILING FOR ACCESS TO ANY VOLUME DAMPERS IN ROOM.
 - MAIN DUCT HERE MUST BE 66" X 18" FROM ST-16 TO DOWNSTREAM OF 34" X 16" TAKE-OFF.
 - OFFSET R.A. DUCT AROUND S.A. DUCT TO MAKE ROOM FOR SIZE INCREASE.
 - FSD HERE WITH DUCT ACCESS DOOR.
 - CONNECT DUCT TO 34" X 16" MAIN DUCT INSTEAD OF 14" X 12" BRANCH DUCT.
 - CONNECT TO REROUTED MAIN R.A. DUCT HERE.
 - INSTALL NEW SOUND TRAP AS INDICATED IN RETURN AIR DUCT HERE.

RECORD DRAWINGS DATE: 10-22-01
 These record drawings have been prepared, in part, on the basis of information compiled and furnished by others. The Engineer will not be responsible for any errors or omissions which have been incorporated into this document as a result.

STAGGS & FISHER CONSULTING ENGINEERS, INC.



ALBERT B. CHANDLER MEDICAL CENTER UNIVERSITY OF KENTUCKY HOSPITAL EXPANSION & RENOVATION

STAGGS & FISHER CONSULTING ENGINEERS
 301 S. BARKLAND AVE., SUITE 100
 COVINGTON, KY 40303
 PHONE: (606) 888-1118

OMNIR/CW Joint Venture Architects
 IN ASSOCIATION WITH HEINRICH OBATA & ASSOCIATES
 One Kentucky Center
 2850 Landonburg Road, Lexington, KY 40504
 Phone: (606) 253-0915
 Fax: (606) 256-0233

PARTIAL SECOND LEVEL DUCT WORK PLAN
 HOSPITAL EXPANSION & RENOVATION
 A. B. CHANDLER MEDICAL CENTER
 PROJECT NO. 304.1
 BID PACKAGE #2

University of Kentucky
 Design & Construction
 401-2001
 Date: _____
 Drawn by: _____
 Check by: _____
 Revisions: _____

M-10S