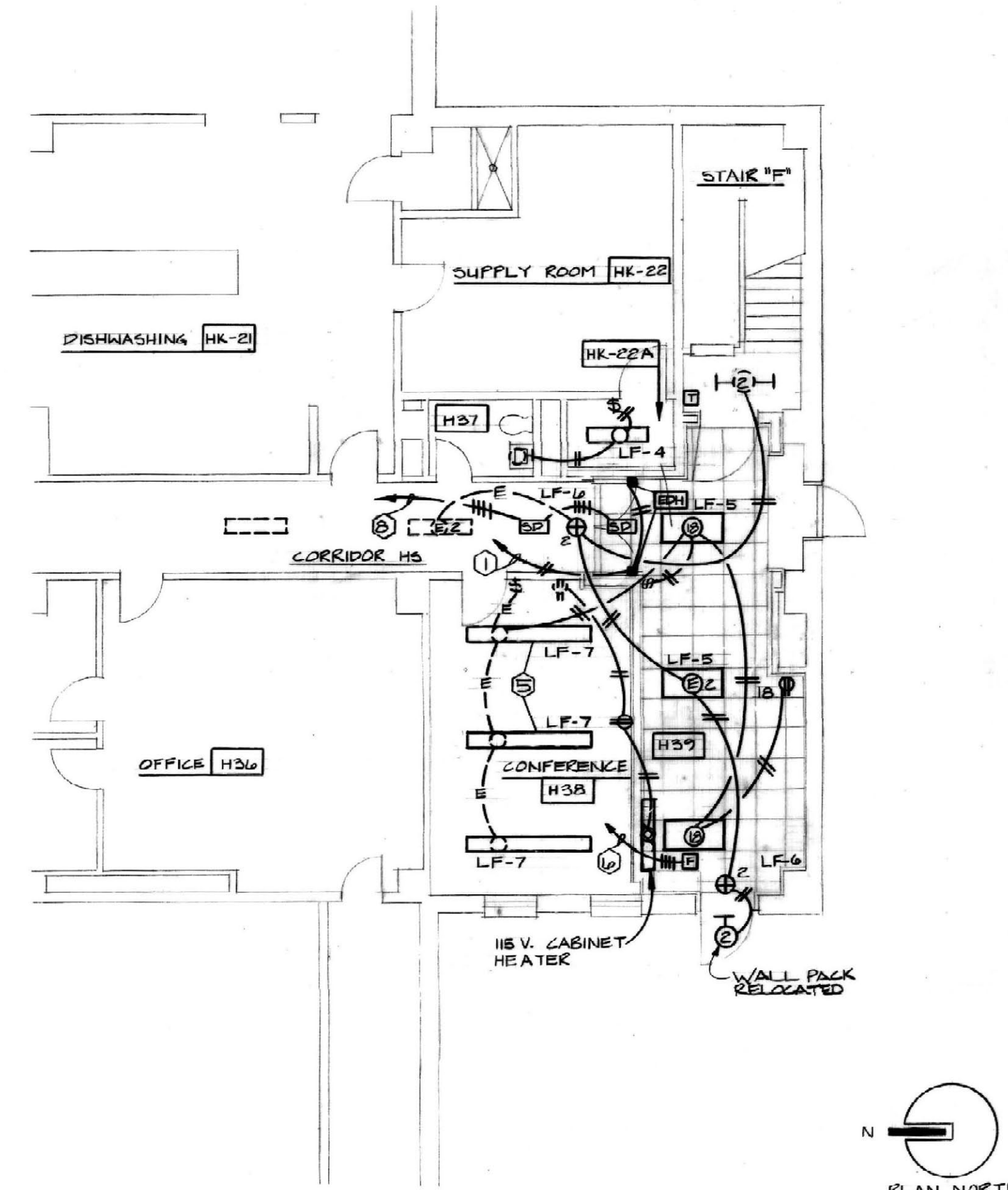
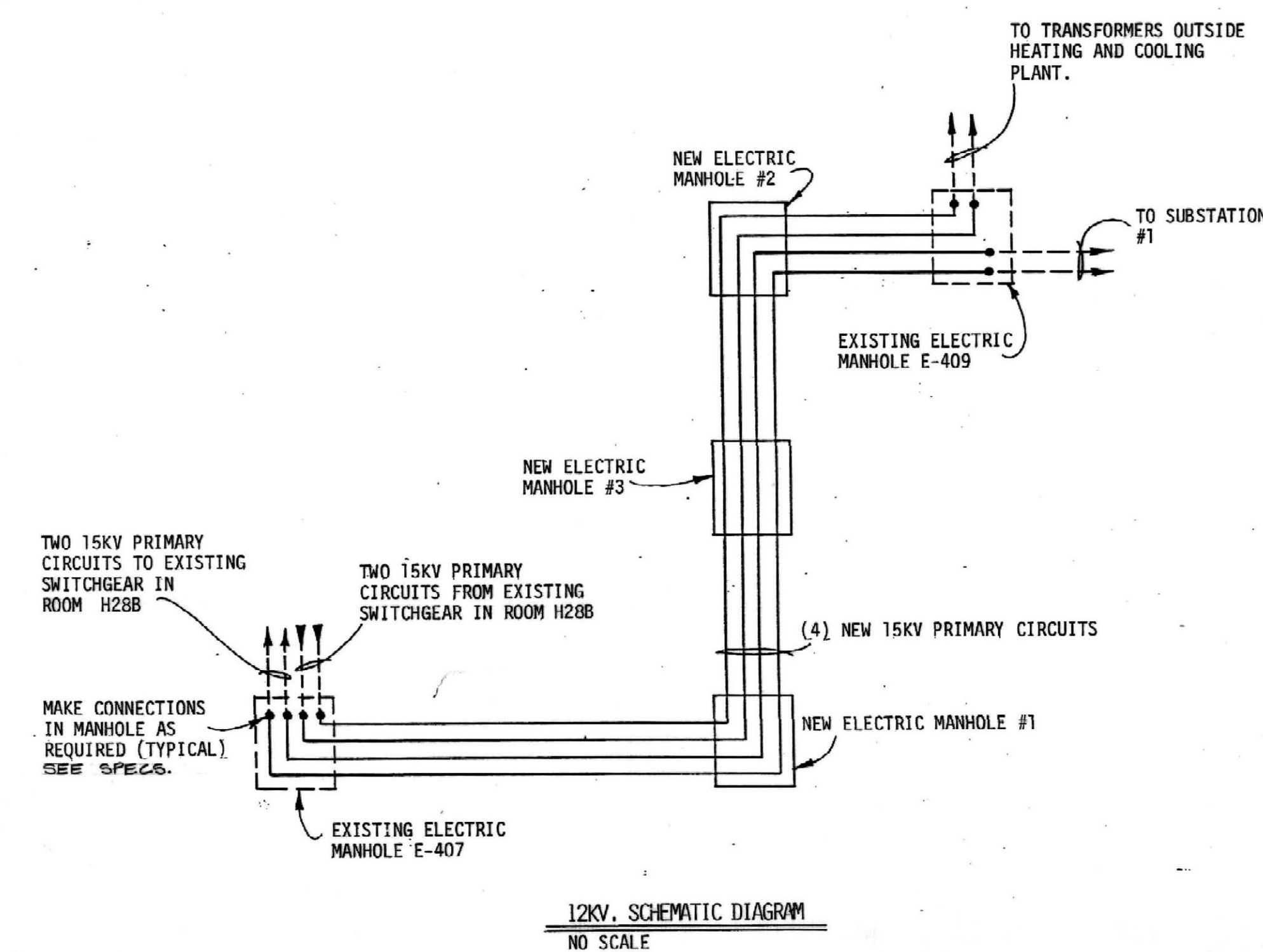


PARTIAL GROUND FLOOR PLAN-DEMOLITION  
SCALE: 1/8" = 1'-0"



PARTIAL GROUND FLOOR PLAN-RENOVATION  
SCALE: 1/8" = 1'-0"

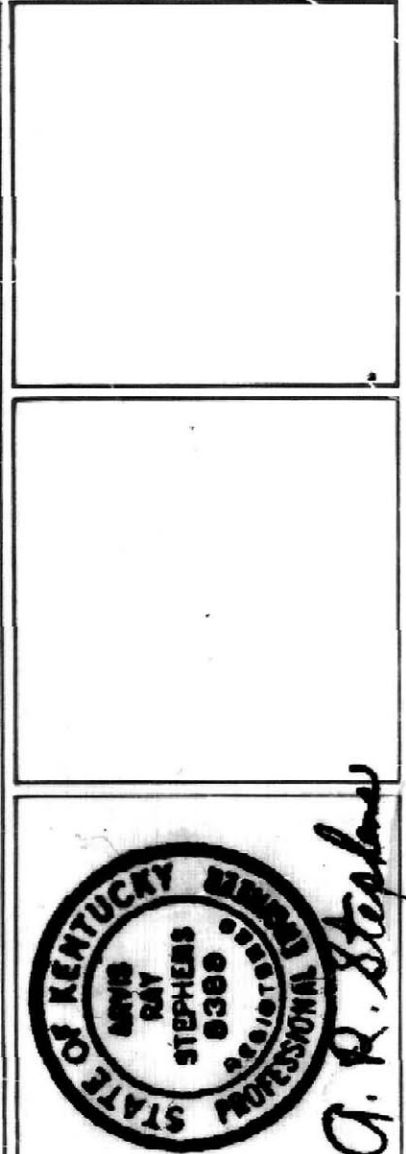
- CODED NOTES: DEMO. AND RENOV. GROUND FLOOR EXIT
- 1 CONNECT TO DOOR HOLDING CIRCUIT AT CORRIDOR DOOR NEAR ROOM H20 APPROXIMATELY 110 FEET DOWN CORRIDOR.
  - 2 EXISTING BUG KILLER TO BE REMOVED.
  - 3 EXISTING WALL PACK WITH PHOTOCELL TO BE RELOCATED. SEE RENOVATION PLAN.
  - 4 REMOVE LIGHT FIXTURES AND DELIVER TO OWNER.
  - 5 NEW 1x6 PENDANT MOUNTED FIXTURE (TYPICAL). CONNECT TO EXIST. CIRCUIT AS REQUIRED.
  - 6 CONNECT PULL STATION INTO EXISTING FIRE ALARM CIRCUIT. SEE DEMOLITION PLAN FOR EXISTING PULL STATION LOCATION.
  - 7 EXISTING THERMOSTAT TO BE RELOCATED. SEE SHEET H-1 FOR EXACT LOCATION AND MAKE CONNECTION AS REQUIRED.
  - 8 CONNECT SMOKE DETECTORS TO EXISTING FIRE ALARM CIRCUIT.



12KV. SCHEMATIC DIAGRAM  
NO SCALE

RECORD DRAWINGS DATE 7/13/90  
These record drawings have been prepared, in part, on the basis of information compiled and furnished by others. The Engineer will not be responsible for any errors or omissions which have been incorporated into this document as a result.  
STAGGS & FISHER CONSULTING ENGINEERS, INC.

ALBERT B. CHANDLER MEDICAL CENTER UNIVERSITY OF KENTUCKY HOSPITAL EXPANSION & RENOVATION



**STAGGS & FISHER CONSULTING ENGINEERS**  
317 S. ASHLAND AVE., 40202  
LEANSINGTON, KY 40504  
PHONE: (606) 254-6823

**OMNISCUM Joint Venture Architects**  
In Association with Hellmuth, Obata, & Kassabaum  
2385 Hammondsburg Road, Leansington, KY 40504 Ph: 606-253-3045  
336 S. Broadway, Leansington, KY 40506 Ph: 606-254-6823

**PARTIAL GROUND FLOOR PLANS-ELECTRICAL**  
HOSPITAL EXPANSION & RENOVATION  
ALBERT B. CHANDLER MEDICAL CENTER  
PROJECT NO. 304-1

University of Kentucky Design & Construction Approval  
Director  
FEB 05 1988

Date: JUNE '87  
Drawn by: JCR/TG  
Check by: ARS  
Revisions:

**E-2**  
HOSPITAL ADDITION

BID PACKAGE #1