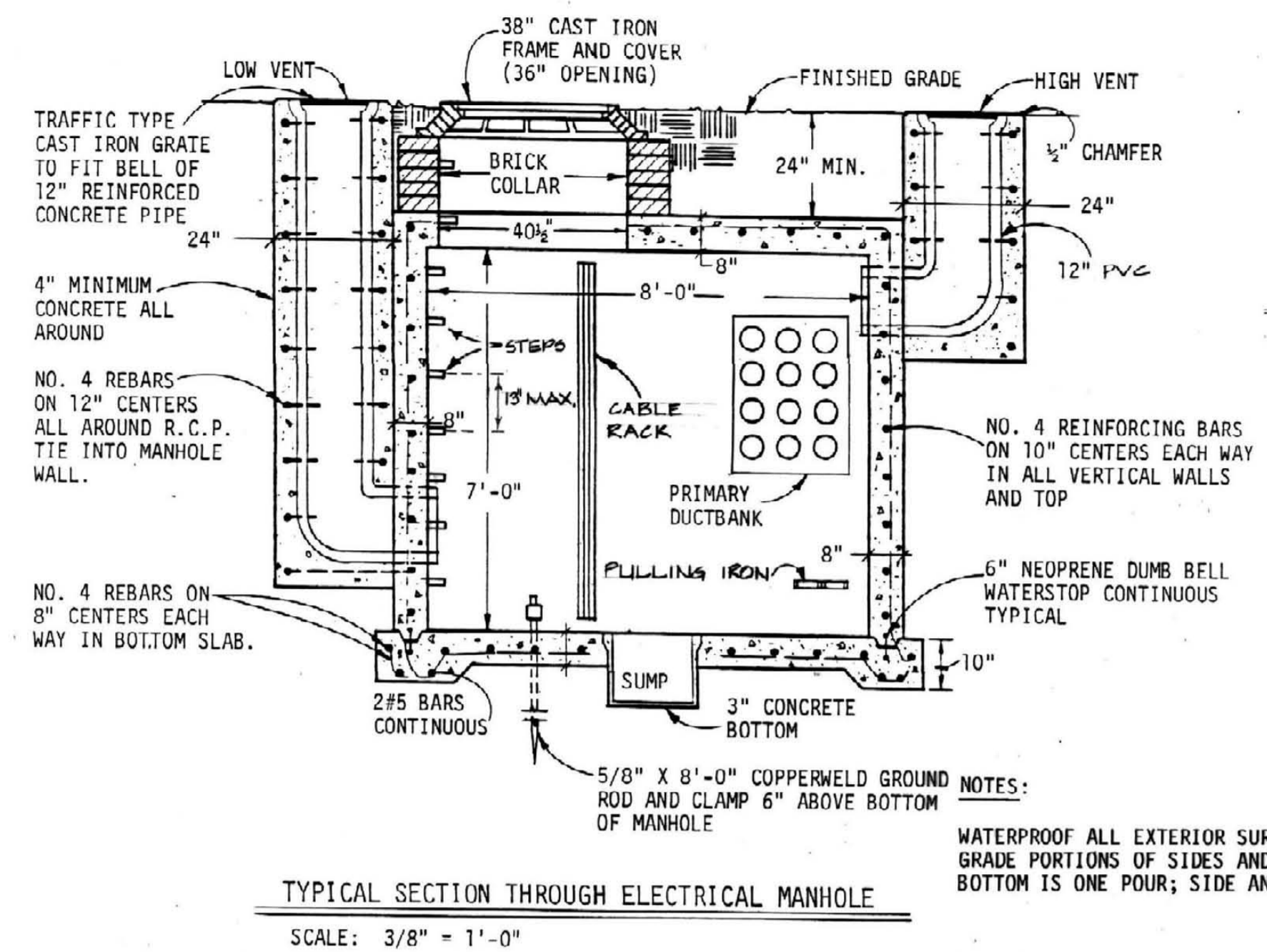


- NOTES:
1. MARKERS SHALL BE LOCATED WHERE INDICATED ON DRAWINGS.
  2. BRASS MARKERS SHALL BE CAST BY BRUCE FOX COMPANY, NEW ALBANY, INDIANA, OR EQUAL.
  3. ALL LETTERING SHALL BE OF THE RAISED TYPE. LETTERING SHOWN ON MARKER IS FOR EXAMPLE ONLY. LETTERING TO BE RAISED 1/8\".
  4. AT THE CONTRACTOR'S OPTION, ONE MARKER MAY BE USED FOR COMPANION MAINS THAT ARE LOCATED CLOSE TOGETHER SUCH AS STEAM AND CONDENSATE PUMP DISCHARGE PIPING OR CHILLED WATER SUPPLY AND CHILLED WATER RETURN PIPING. PROVIDE ARROW FOR EACH MAIN.
  5. CONTRACTOR SHALL FURNISH A COMPLETE LIST FOR APPROVAL OF ALL MARKERS SHOWING NAMES, ARROWS, DEPTH AND DATE.
  6. WHEN UTILITY MARKERS ARE INSTALLED OVER LINES AT A POINT OF DIRECTION CHANGE, THE ARROW ON THE MARKERS SHALL BE "ANGLED" AS REQUIRED TO IMPLY THIS ROUTING.

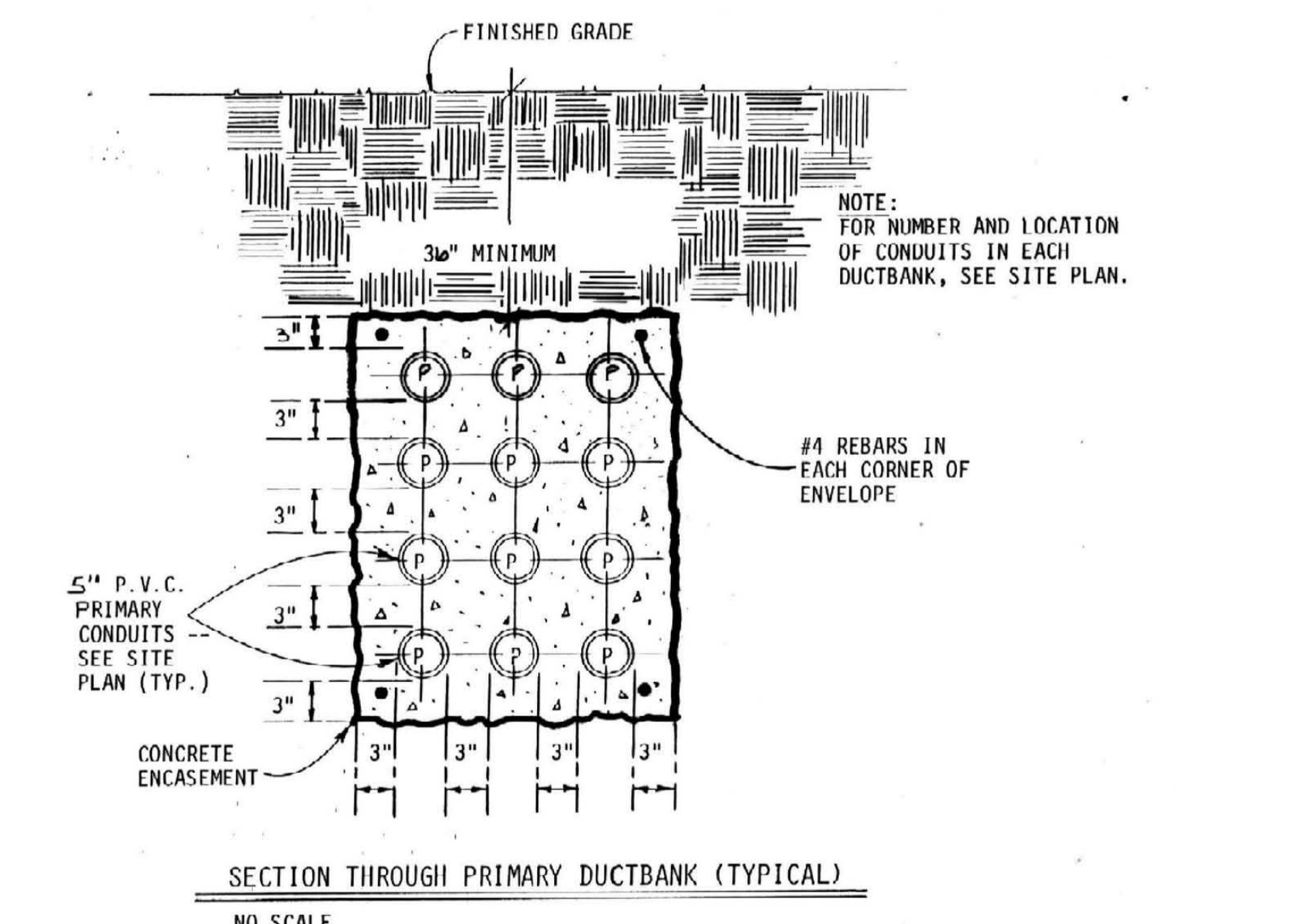
**UTILITY SERVICE MARKER DETAIL**  
NO SCALE

**ELECTRICAL LEGEND**

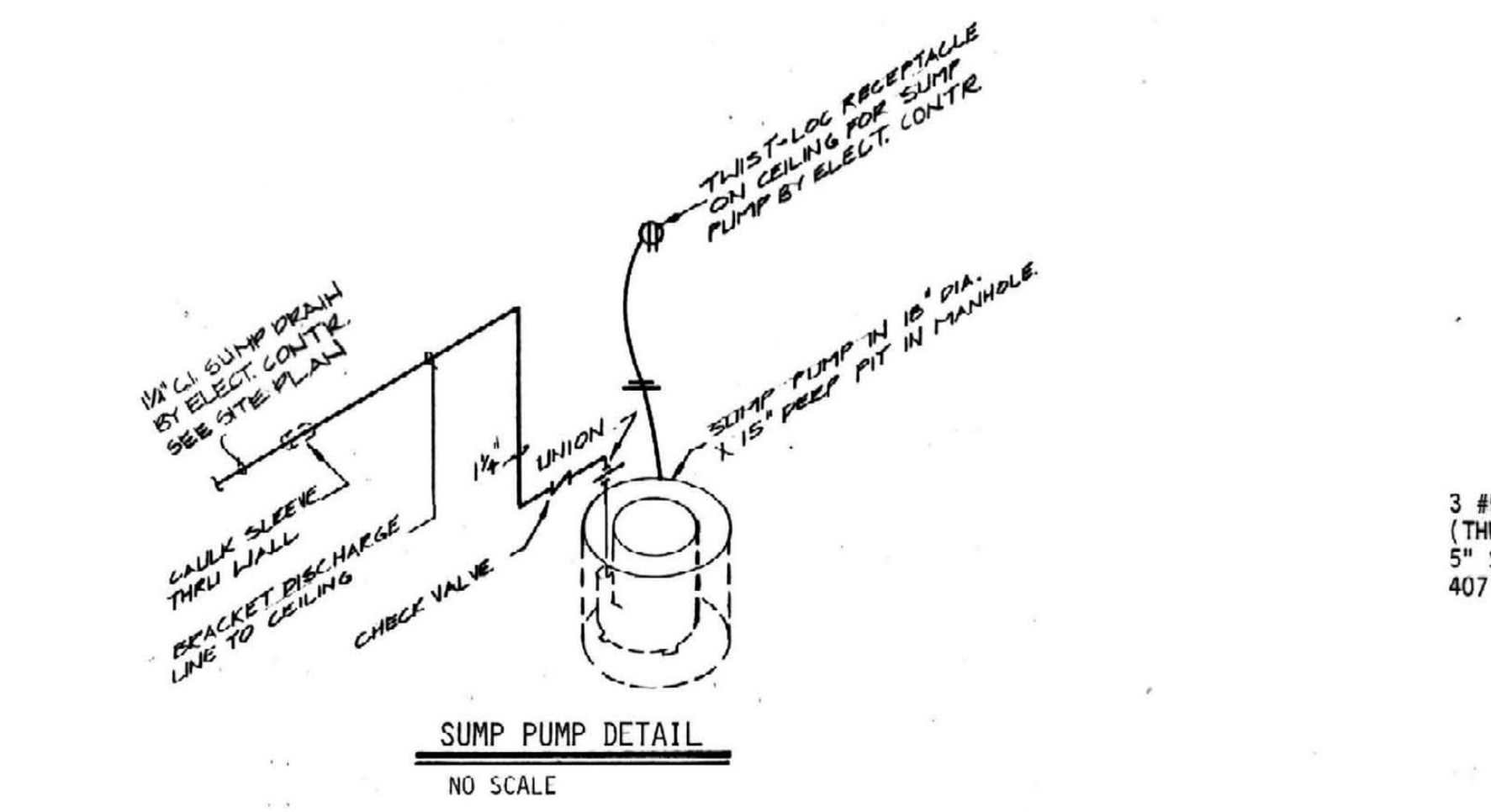
PRIMARY CONDUIT UNDERGROUND	---
EXISTING PRIMARY CONDUIT TO REMAIN	---EP---
EXISTING PRIMARY CONDUIT TO BE REMOVED (OR ABANDONED) (SEE NOTE)	-X-EP-X-
SECONDARY CONDUIT UNDERGROUND	---
EXISTING SECONDARY CONDUIT TO REMAIN	---EUE---
EXISTING SECONDARY CONDUIT TO BE REMOVED (OR ABANDONED) (SEE NOTE)	-X-EUE-X-
TELEPHONE CONDUIT UNDERGROUND	---
EXISTING TELEPHONE CONDUIT TO REMAIN	---ET---
EXISTING TELEPHONE CONDUIT TO BE REMOVED (OR ABANDONED) (SEE NOTE)	-X-ET-X-
CONDUIT ABOVE FLOOR	---
EXISTING CONDUIT TO REMAIN	---
SUMP DRAIN BY ELECT. (A-F.F.)	---
LIGHTING STANDARD TO BE REMOVED	---
EXISTING LIGHTING STANDARD	---
EXISTING LIGHT FIXTURE TO REMAIN	---
NEW LIGHT FIXTURE OUTLET	---
EXISTING LIGHT FIXTURE - TO BE REMOVED	---
EXISTING EXIT LIGHT TO BE REMOVED	---
NEW EXIT LIGHT	---
EXISTING FLUORESCENT LIGHT FIXTURE TO REMAIN	---
EXISTING FLUORESCENT LIGHT FIXTURE TO BE REMOVED	---
EXISTING DUPLEX OUTLET TO REMAIN	---
EXISTING DUPLEX OUTLET TO BE REMOVED	---
EXISTING WALL SWITCH TO REMAIN	---
NEW WALL SWITCH	---
EXISTING 208V./1 PHASE OUTLET TO BE REMOVED	---
EXISTING CLOCK TO REMAIN	---
EXISTING F.A. BREAKGLASS STATION TO BE REMOVED	---
NEW F.A. PULL STATION	---
NEW ELECTROMAGNETIC DOOR HOLDER	---
UTILITY MARKER	---
SEE NOTE 1	---
HEIGHT OF DEVICE (IN INCHES A.F.F.)	---
CONDUIT	---
WIRE	---
JUNCTION BOX	---
AMVIV FINISHED FLOOR	---
SMOKE DETECTOR	---



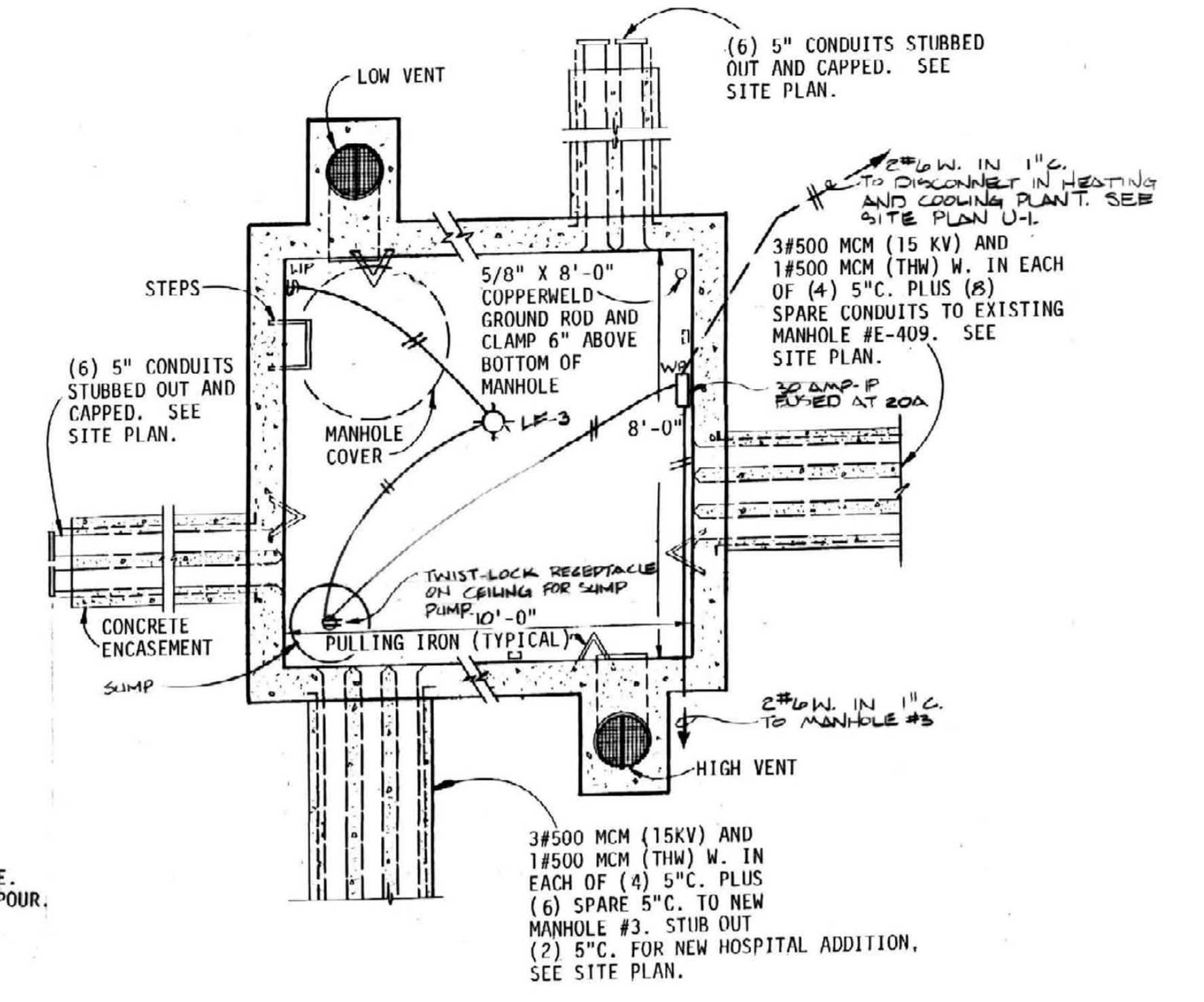
TYPICAL SECTION THROUGH ELECTRICAL MANHOLE  
SCALE: 3/8" = 1'-0"



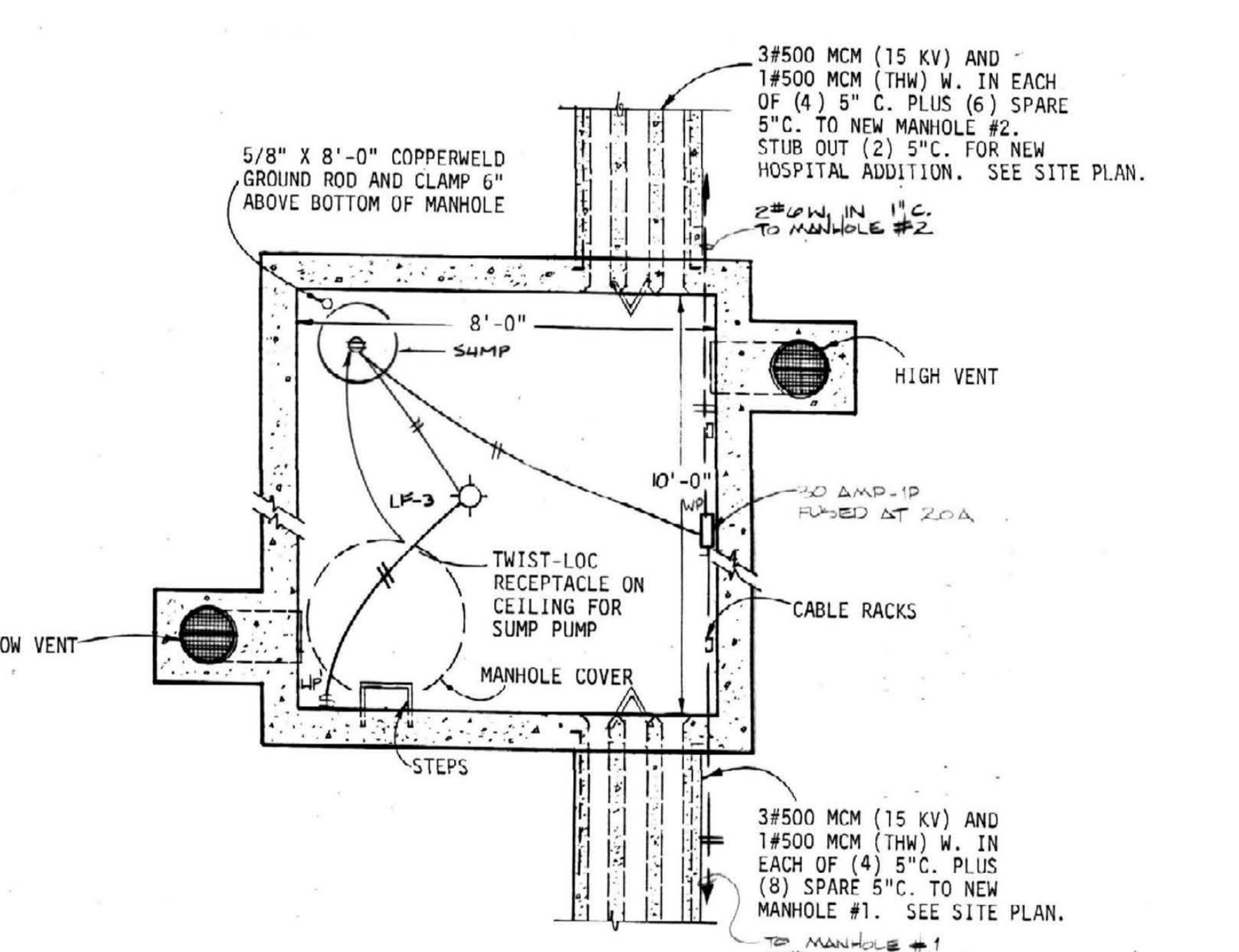
SECTION THROUGH PRIMARY DUCTBANK (TYPICAL)  
NO SCALE



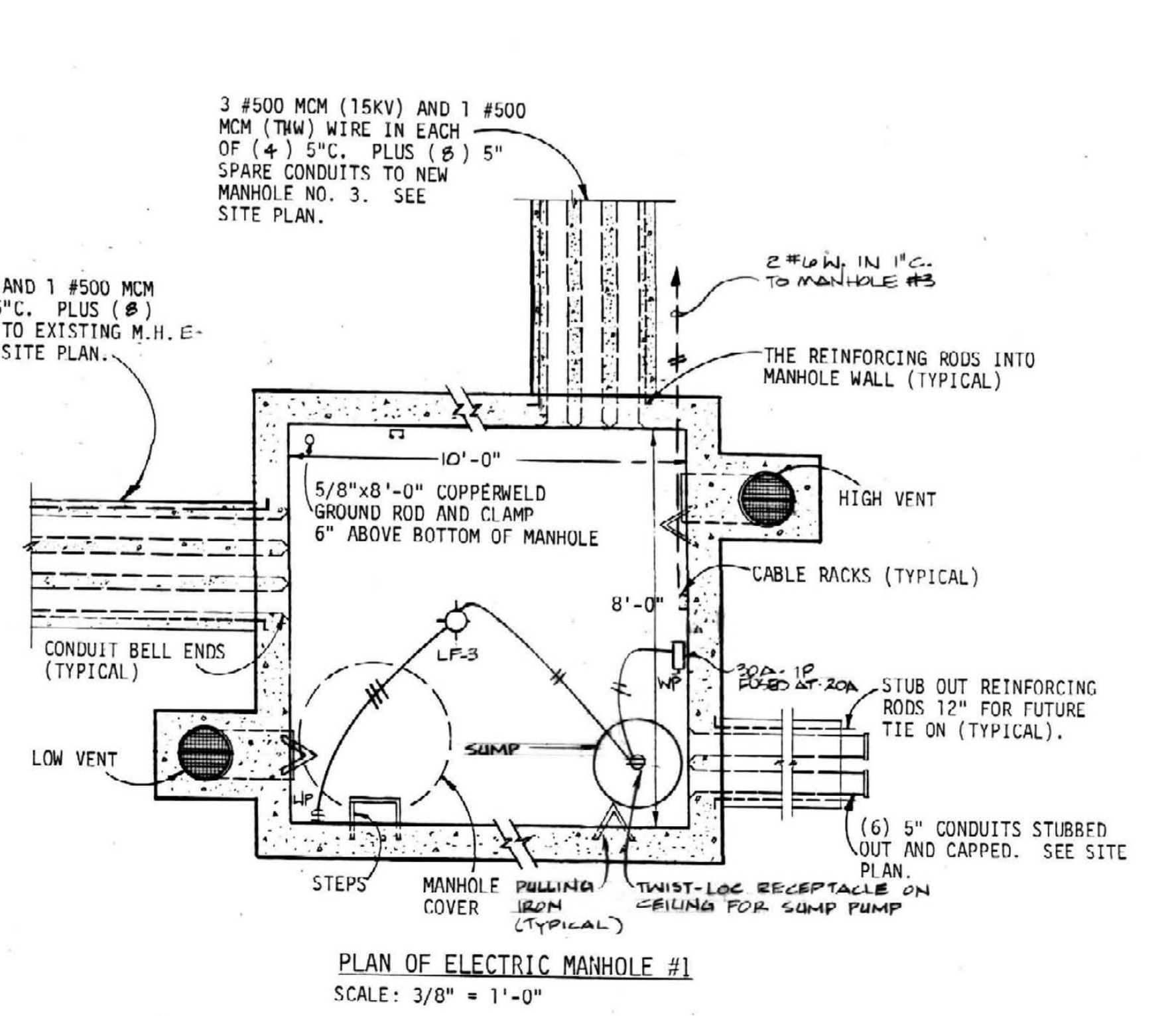
SUMP PUMP DETAIL  
NO SCALE



PLAN OF ELECTRIC MANHOLE #2  
SCALE: 3/8" = 1'-0"



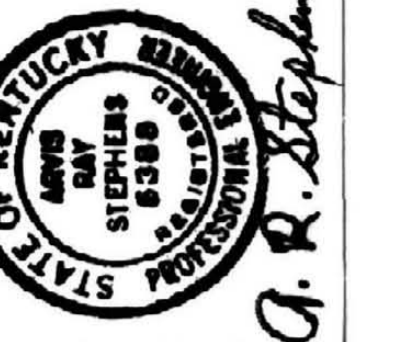
PLAN OF ELECTRIC MANHOLE #3  
SCALE: 3/8" = 1'-0"



PLAN OF ELECTRIC MANHOLE #1  
SCALE: 3/8" = 1'-0"

RECORD DRAWINGS DATE 9/13/90  
These record drawings have been prepared, in part, on the basis of information compiled and furnished by others. The Engineer will not be responsible for any errors or omissions which have been incorporated into this document as a result.  
STAGGS & FISHER CONSULTING ENGINEERS, INC.

BID PACKAGE #1  
ALBERT B. CHANDLER MEDICAL CENTER UNIVERSITY OF KENTUCKY HOSPITAL EXPANSION & RENOVATION



**STAGGS & FISHER CONSULTING ENGINEERS**  
317 B. ASHLAND AVE.  
LEXINGTON, KENTUCKY 40506  
PHONE: (606) 254-1188

OMNIVENTURE Architects  
In Association with Hellmuth, Obata, & Kassabaum  
2085 Harshbarger Road, Louisville, KY 40224, Ph: 606-253-3545  
335 S. Broadway, Lexington, KY 40506, Ph: 606-254-8622

**DETAILS AND LEGEND-ELECTRICAL**  
HOSPITAL EXPANSION & RENOVATION  
A. B. CHANDLER MEDICAL CENTER  
PROJECT NO. 304.1

University of Kentucky Design & Construction Approval  
**APL**  
Director

FFR 1988  
Date: JUNE 90  
Drawn by: JCR  
Check by: ABS  
Revisions: \_\_\_\_\_  
Cult: NEI  
102-1  
F-1  
HOSPITAL ADDITION