

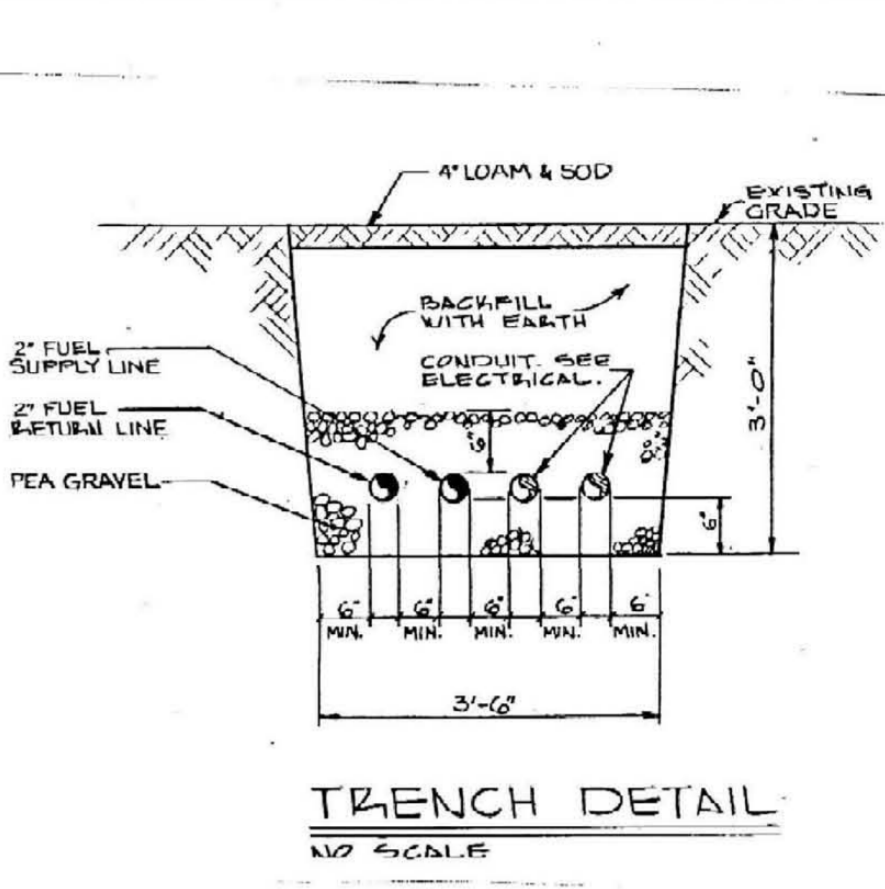
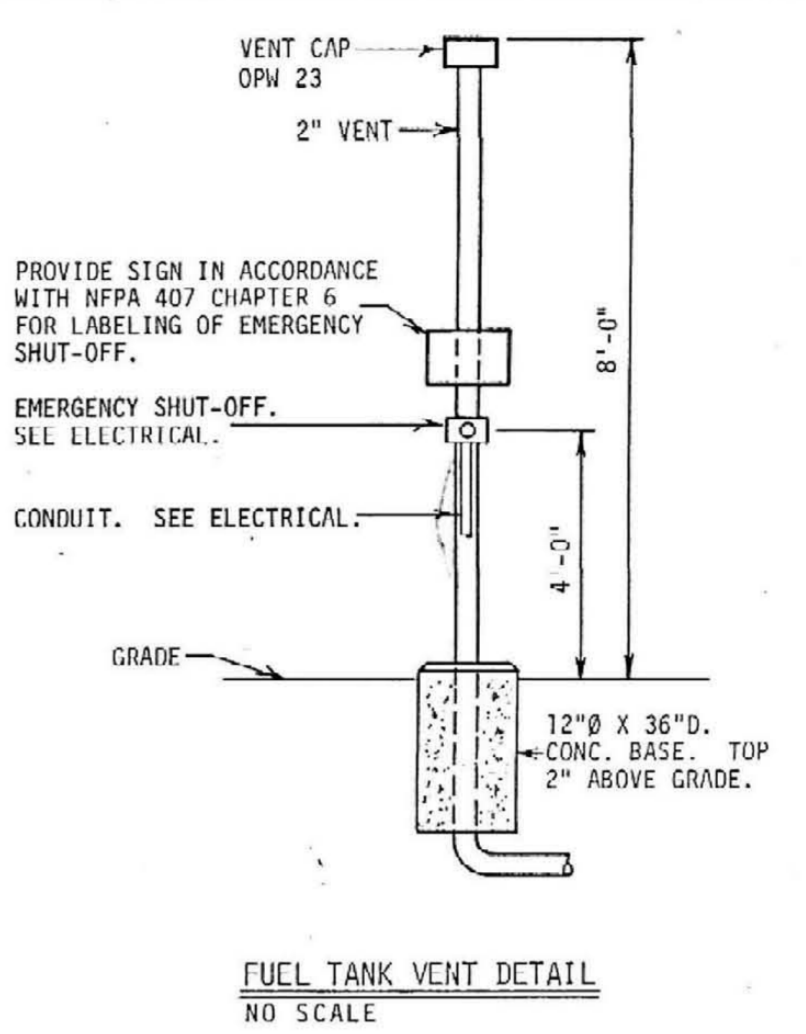
GENERAL NOTES:

WHERE EXISTING UNDERGROUND UTILITIES ARE NOTED TO BE REMOVED AND/OR ABANDONED, THE CONTRACTOR SHALL REMOVE ALL UTILITIES WHICH REQUIRE CONSTRUCTION. CONDUITS NOT REQUIRED TO BE REMOVED FOR NEW CONSTRUCTION SHALL BE ABANDONED AFTER CONDUCTORS ARE REMOVED AND CONDUITS CAPPED.

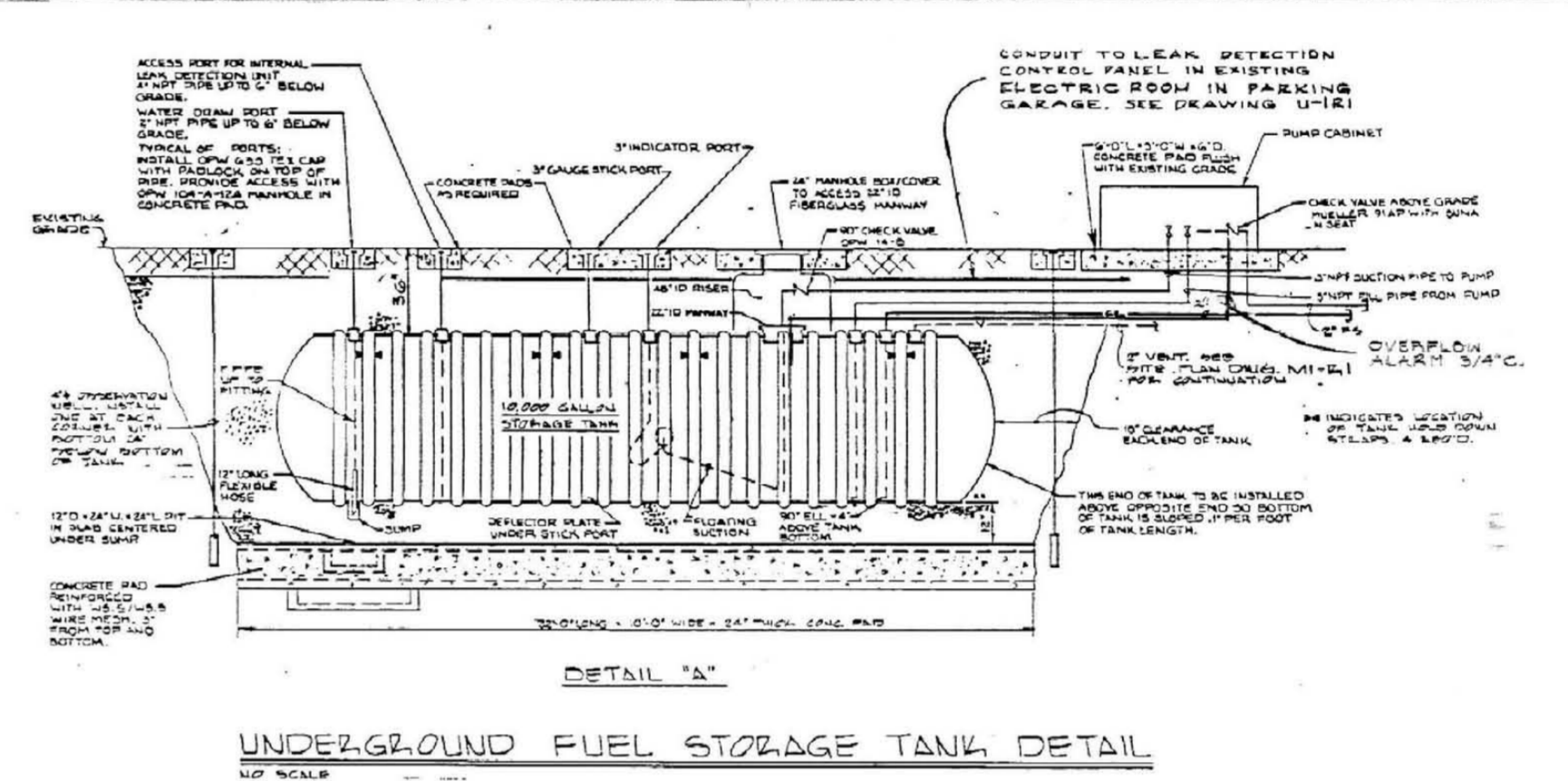
THE DRAWINGS SHOW THE APPROXIMATE LOCATION OF THE EXISTING AND NEW SUBSURFACE UTILITY LINES. THESE LINES HAVE BEEN IDENTIFIED AND LOCATED AS ACCURATELY AS POSSIBLE USING AVAILABLE INFORMATION; THE CONTRACTOR IS RESPONSIBLE FOR VERIFYING ALL ACTUAL LOCATIONS. IF ANY CHARTED, UNCHARTED OR MISLOCATED UTILITY SERVICE IS INTERRUPTED FOR ANY REASON, THE CONTRACTOR WILL WORK CONTINUOUSLY TO RESTORE SERVICE TO THE SATISFACTION OF THE OWNER AT NO ADDITIONAL COST TO THE OWNER.

SHOULD UTILITIES REQUIRE RELOCATION OR ROUTING NOT SHOWN OR INDICATED TO BE RELOCATED OR ROUTED, CONTACT AND COOPERATE WITH THE OWNER TO MAKE THE REQUIRED ADJUSTMENTS AT AN ADJUSTABLE CHANGE IN THE CONTRACT PRICE.

CONTRACTOR SHALL VERIFY THE LOCATION OF THE TOP OF MANHOLES PRIOR TO INSTALLATION.



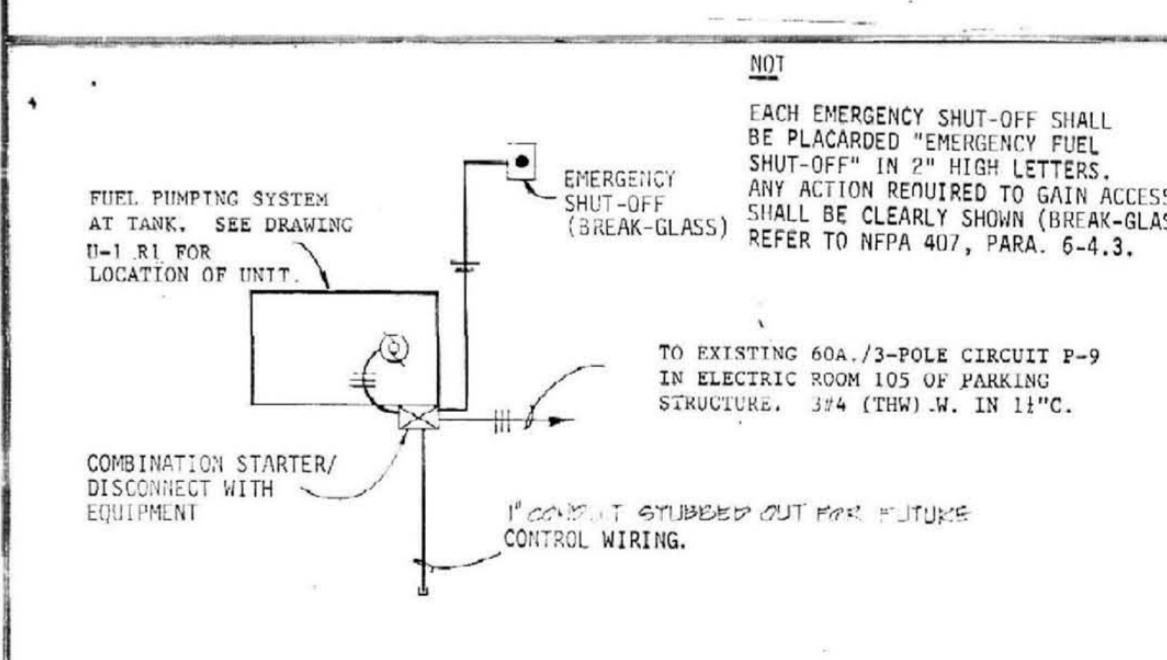
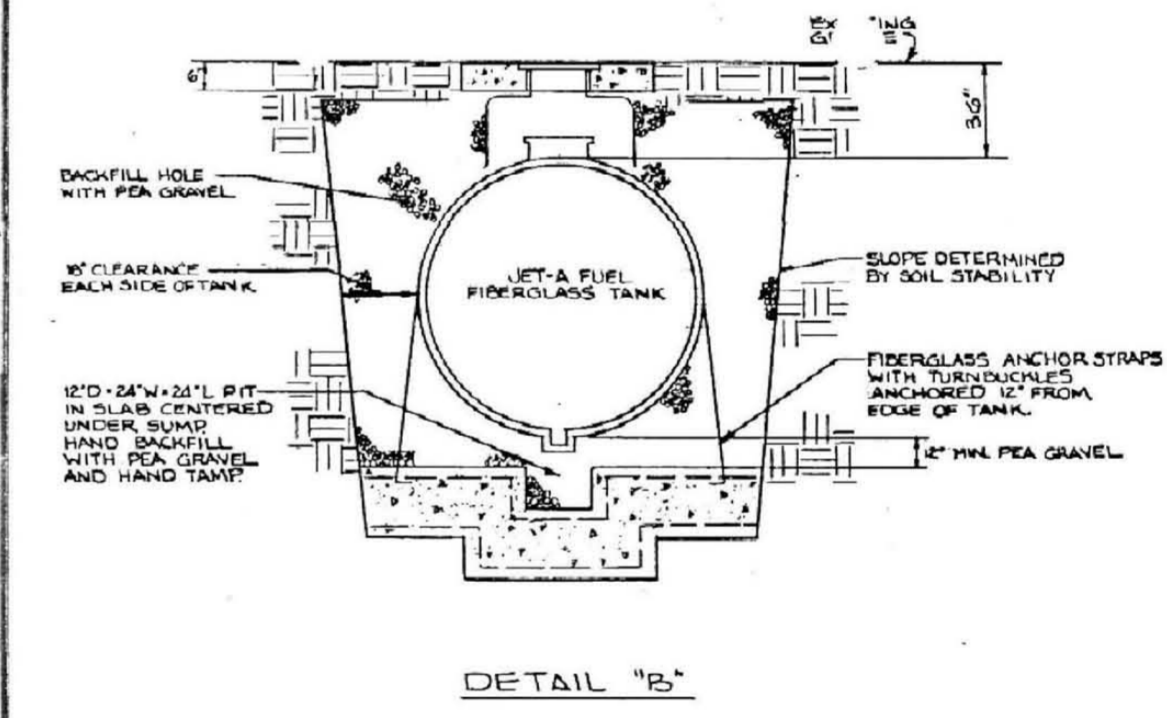
AGRICULTURAL SCIENCE NORTH
FIRST FLOOR ELEV. - 981.00



- CODED NOTES: DRAWINGS U-1 & U-2**
- 3 #500 MCM (15 KV.) AND 1 #500 MCM (THW) IN EACH OF FOUR 5" C. PLUS (8) SPARE 5" C.
 - 3 #500 MCM (15 KV.) AND 1 #500 MCM (THW) IN EACH OF FOUR 5" C. PLUS (6) SPARE 5" C. TO NEW MANHOLE #2. STUB OUT (2) 5" C. FOR NEW HOSPITAL ADDITION.
 - EXISTING 3 #500 MCM (15 KV.) AND 1 #500 MCM (THW) IN EACH OF TWO (2) EXISTING CONDUIT FROM ELECTRIC SUBSTATION NO. 1 TO REMAIN.
 - 3 #500 MCM (15 KV.) AND 1 #500 MCM (THW) IN EACH OF FOUR 5" C. PLUS (6) SPARE 5" C. TO NEW MANHOLE NO. 3. STUB OUT (2) 5" C. FOR NEW HOSPITAL ADDITION.
 - REMOVE EXISTING SECONDARY CONDUIT. SEE GENERAL NOTES ON SHEET ME-2.
 - REMOVE EXISTING ELECTRIC MANHOLE.
 - REMOVE AND/OR ABANDON. SEE GENERAL NOTES ON SHEET ME-2.
 - EXISTING POST LIGHT TO REMAIN.
 - EXISTING TELEPHONE MANHOLE U-61 TO REMAIN.
 - REMOVE EXISTING TRANSFORMER.
 - (2) 5" C. STUBBED OUT FOR FUTURE HOSPITAL ADDITION.
 - EXISTING TELEPHONE MANHOLE TO REMAIN.
 - EXISTING (6) 4" CONDUIT TO REMAIN.
 - EXISTING TELEPHONE MANHOLE U-41 TO REMAIN.
 - EXISTING (5) 4" CONDUIT TO REMAIN.
 - EXISTING (4) 4" CONDUIT TO REMAIN.
 - EXISTING TELEPHONE MANHOLE U-40 TO REMAIN.
 - EXISTING (2) 3" CONDUIT TO REMAIN.
 - REMOVE EXISTING LIGHTING STANDARD AND DELIVER TO OWNER.
 - EXISTING 1" CONDUIT TO BE REMOVED AND/OR ABANDONED.
 - REMOVE EXISTING POST LIGHT AND DELIVER TO OWNER.
 - NEW 480V., 1 PHASE PRIMARY, 120V. SECONDARY 7.5 KVA STEP-DOWN TRANSFORMER. CONNECT PRIMARY TO 480V., 2 POLE SPARE CIRCUIT IN EXISTING MOTOR CONTROL CENTER.
 - NEW 60A.-2 POLE, 240V. DISCONNECT FUSED AT 60 AMPS.
 - TO MANHOLE #2. SEE MANHOLE DETAILS, SHEET E-1, TO MH #405, THEN TO MH #42.
 - CONNECT TO EXISTING 2" SUMP PUMP DISCHARGE LINE.
 - CONNECT 2" SUMP PUMP DISCHARGE LINE TO CATCH BASIN. SEE NOTE 69.
 - NEW CATCH BASIN AND PIPING FURNISHED AND INSTALLED BY DIVISION 2 CONTRACTOR UNDER THIS CONTRACT.
 - NEW STORM MANHOLE AND PIPING FURNISHED AND INSTALLED BY DIVISION 2 CONTRACTOR UNDER THIS CONTRACT.
 - NEW SANITARY MANHOLE AND PIPING FURNISHED AND INSTALLED BY DIVISION 2 CONTRACTOR UNDER THIS CONTRACT.
 - CONNECT NEW 15" SANITARY LINE TO NEW SANITARY MANHOLE. SEE NOTE 71.
 - EXISTING FIRE HYDRANT TO REMAIN.
 - SEE NOTE FOR LOCATION OF EXISTING LIGHT FIXTURE TO BE RELOCATED.
 - SLOPE DOWN DUCT BANK TO TOP AT ELEV. 978'-0"
 - SLOPE UP DUCT BANK TO TOP AT ELEV. 983'-0"
 - REMOVE EXISTING SERVICES (AIR, 125° HOT WATER, STEAM SUPPLY AND RETURN PIPING, DEIONIZED WATER AND RECIRCULATING HOT WATER) TO RESEARCH FACILITY NO. 2 BACK INTO SUB-BASEMENT AND CAP.
 - REMOVE EXISTING COLD WATER SHUT-OFF VALVE AND PIPING IN EXISTING PIT SERVING RESEARCH FACILITY NO. 2.
 - CONNECT TO EXISTING 6" WATER MAIN.
 - CONCRETE THRUST BLOCK (TYPICAL). SEE DETAIL ON DRAWING M-2.
 - RELOCATE EXISTING FIRE HYDRANT, VALVE AND VALVE BOX TO NEW LOCATION AS SHOWN.
 - CONNECT TO EXISTING 8" WATER MAIN WITH NEW ELBOW.
 - EXISTING GAS PRESSURE REDUCING STATION TO REMAIN.
 - DISCONNECT EXISTING 2 1/2" GAS LINE TO RESEARCH FACILITY NO. 2 AT GAS METER IN EXISTING HEATING/COOLING PLANT AND CAP. REMOVE PIPING FROM METER TO OUTSIDE AND CAP BELOW EXISTING GRADE.

- REMOVE EXISTING YARD HYDRANT AND PIPING. REMOVE EXISTING PIPING BACK INTO MEDICAL CENTER AND CAP AT MAIN ABOVE BASEMENT CEILING IN CORRIDOR HS. SEE DRAWING M-1.
- REMOVE EXISTING PIPING.
- REMOVE EXISTING GAS LINE TO THIS POINT AND CAP.
- REMOVE EXISTING 8" WATER MAIN TO THIS POINT AND CAP.
- REMOVE EXISTING 16" HPS AND 6" TO EXPANSION LOOP AND PIPING AND REPLACE WITH NEW PIPING AS SHOWN. SEE DRAWING M-1.
- EXISTING STEAM MANHOLE NO. 1 TO REMAIN. SEE DETAILS ON DRAWING M-1 FOR MODIFICATIONS REQUIRED.
- RAISE EXISTING STEAM MANHOLE COVER AS REQUIRED TO MATCH NEW GRADE. SEE STEAM MANHOLE DETAILS ON DRAWING M-1.
- REMOVE EXISTING 12" STEAM MANHOLE VENT COVER AND FRAME AND REUSE AT NEW VENT LOCATION AS INDICATED. SEE STEAM MANHOLE DETAILS ON DRAWING M-1.
- REMOVE EXISTING 12" RCP STEAM MANHOLE VENT LINE ENCASED IN CONCRETE BACK TO MANHOLE AND PROVIDE NEW VENT. SEE STEAM MANHOLE DETAILS ON DRAWING M-1.
- REMOVE EXISTING 12" RCP STEAM MANHOLE VENT LINE ENCASED IN CONCRETE BACK TO STEAM MANHOLE. PLUG AND SEAL OPENING WATERTIGHT. SEE STEAM MANHOLE DETAILS ON DRAWING M-1.
- DISCONNECT EXISTING GAS LINE AT THIS POINT AND CAP BOTH ENDS.
- ABANDON EXISTING PIPING.
- EXISTING PIPING TO REMAIN.
- REMOVE EXISTING EXTERIOR WALL MOUNTED FIRE DEPARTMENT PUMPER CONNECTIONS AND PIPING AT THIS LOCATION. SEE DRAWING M-1.
- CONNECT TO EXISTING 15" SANITARY LINE.
- NEW 12" RCP STEAM MANHOLE VENTS. SEE STEAM MANHOLE DETAILS ON DRAWING M-1.
- REMOVE EXISTING 2" SUMP PUMP DISCHARGE PIPING AND REROUTE AS SHOWN.
- REMOVE EXISTING LIGHTING STANDARD AND RELOCATE TO WEST ENTRANCE OF PARKING STRUCTURE AND MAKE CONNECTION AS SHOWN.
- EXISTING MOTOR CONTROL CENTER TO REMAIN.
- NEW 480V., 1 PHASE PRIMARY, 120V. SECONDARY 7.5 KVA STEP-DOWN TRANSFORMER. CONNECT PRIMARY TO 480V., 2 POLE SPARE CIRCUIT IN EXISTING MOTOR CONTROL CENTER.
- NEW 60A.-2 POLE, 240V. DISCONNECT FUSED AT 60 AMPS.
- TO MANHOLE #2. SEE MANHOLE DETAILS, SHEET E-1, TO MH #405, THEN TO MH #42.
- CONNECT TO EXISTING 2" SUMP PUMP DISCHARGE LINE.
- CONNECT 2" SUMP PUMP DISCHARGE LINE TO CATCH BASIN. SEE NOTE 69.
- NEW CATCH BASIN AND PIPING FURNISHED AND INSTALLED BY DIVISION 2 CONTRACTOR UNDER THIS CONTRACT.
- NEW STORM MANHOLE AND PIPING FURNISHED AND INSTALLED BY DIVISION 2 CONTRACTOR UNDER THIS CONTRACT.
- NEW SANITARY MANHOLE AND PIPING FURNISHED AND INSTALLED BY DIVISION 2 CONTRACTOR UNDER THIS CONTRACT.
- CONNECT NEW 15" SANITARY LINE TO NEW SANITARY MANHOLE. SEE NOTE 71.
- EXISTING FIRE HYDRANT TO REMAIN.
- SEE NOTE FOR LOCATION OF EXISTING LIGHT FIXTURE TO BE RELOCATED.
- SLOPE DOWN DUCT BANK TO TOP AT ELEV. 978'-0"
- SLOPE UP DUCT BANK TO TOP AT ELEV. 983'-0"
- REMOVE EXISTING SERVICES (AIR, 125° HOT WATER, STEAM SUPPLY AND RETURN PIPING, DEIONIZED WATER AND RECIRCULATING HOT WATER) TO RESEARCH FACILITY NO. 2 BACK INTO SUB-BASEMENT AND CAP.
- REMOVE EXISTING COLD WATER SHUT-OFF VALVE AND PIPING IN EXISTING PIT SERVING RESEARCH FACILITY NO. 2.
- CONNECT TO EXISTING 6" WATER MAIN.
- CONCRETE THRUST BLOCK (TYPICAL). SEE DETAIL ON DRAWING M-2.
- RELOCATE EXISTING FIRE HYDRANT, VALVE AND VALVE BOX TO NEW LOCATION AS SHOWN.
- CONNECT TO EXISTING 8" WATER MAIN WITH NEW ELBOW.
- EXISTING GAS PRESSURE REDUCING STATION TO REMAIN.
- DISCONNECT EXISTING 2 1/2" GAS LINE TO RESEARCH FACILITY NO. 2 AT GAS METER IN EXISTING HEATING/COOLING PLANT AND CAP. REMOVE PIPING FROM METER TO OUTSIDE AND CAP BELOW EXISTING GRADE.

- SEE ARCHITECTURAL SITE PLANS FOR REMOVAL OF EXISTING MANHOLES, CATCH BASINS, AND PIPING.
- NEW LOCATION OF EXISTING FIRE DEPARTMENT WALL SUMP (SOA EXTERIOR USE).
- CONNECT TO EXISTING 12" WATER LINE (FIELD VERIFY SIZE) WITH NEW TAPPING SLEEVE AND VALVE WITH VALVE BOX.
- NEW VALVE WITH VALVE BOX.
- NEW FIRE HYDRANT. SEE DETAIL ON DRAWING U-2.
- NEW FIRE DEPARTMENT SUMP AND PIT. SEE DETAIL ON DRAWING U-2.
- TOP OF DUCT BANK LEAVING MH'S SHALL BE 983'-0"
- TOP OF DUCT BANK AT ELEV. 978'-0"
- REMOVE EXISTING M.H.



NOTES:

ALL WIRING TO AND IN FUEL PUMPING SYSTEM, FUEL DISTRIBUTION UNIT AND FUEL STORAGE TANK TO BE CLASS I, DIVISION I, GROUP D. LOCATIONS OF ARTICLE 500 OF THE NATIONAL ELECTRIC CODE (NFPA 70-1997).

SHUT-OFF SWITCH SHALL BE STEELER NO. 2079-2152 INSTALLED IN SURFACE-MOUNTED WEATHERPROOF ENCLOSURE, WIPERX TYPE 2975-9166, OR EQUAL.

RECORD DRAWINGS DATE 2/13/90

These record drawings have been prepared, in part, on the basis of information compiled and furnished by others. The Engineer will not be responsible for any errors or omissions which have been incorporated into this document as a result.

STAGGS & FISHER CONSULTING ENGINEERS, INC.

BID PACKAGE # 1 ALBERT B. CHANDLER MEDICAL CENTER UNIVERSITY OF KENTUCKY HOSPITAL EXPANSION & RENOVATION

OMNI/CMW Joint Venture Architects
In Association with Helmut, Obata, & Kassabaum

STAGGS & FISHER CONSULTING ENGINEERS
307 S. BARKLAND AVE.
LEXINGTON, KENTUCKY 40508
PHONE: (606) 888-1188

University of Kentucky
Design & Construction
Approval

M. W. ...
Director

FEB 13 1990

DATE 2/13/90

Drawn by: JCK/TG

Check by: ACS

Revisions:

PROJECT NO. 304-1

HOSPITAL ADDITION

U-2