

U.K. MEDICAL CENTER
(EXIST. BLDG.)
First Floor Elev. - 993.95
Ground Floor Elev. - 979.03

NEW MEDICAL CENTER ADDITION
Ground Floor Elev. - 979.03

HOSPITAL PARKING GARAGE
(UNDER CONSTRUCTION)

HEATING AND
COOLING PLANT

END NEW ROAD
CONSTRUCTION
MATCH EXIST.
CURB & PVMT.

NEW 4' CONC.
S.W. MATCH
EXIST. EDDING
OF ADJACENT WALK

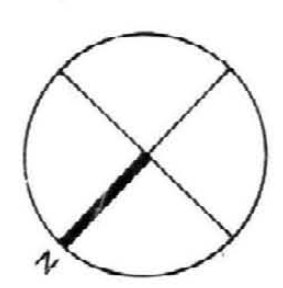
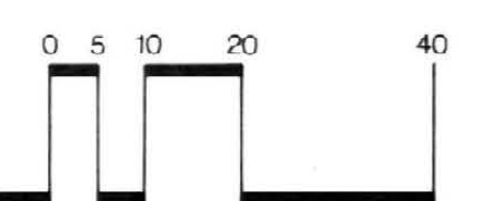
4' CONC. S.W. W/G
SCORING (PROV. DE
EXP. LT. @ 48\"/>

NOTE:
LAYOUT OF ROADWAY A & B ARE
APPROXIMATE AND MUST BE ADJUSTED
TO CONFORM WITH CONNECTIONS TO
EXIST. ROADS. VERIFY EXIST. IN
FIELD W/ ASCH. PRIOR TO EXCAVATION.

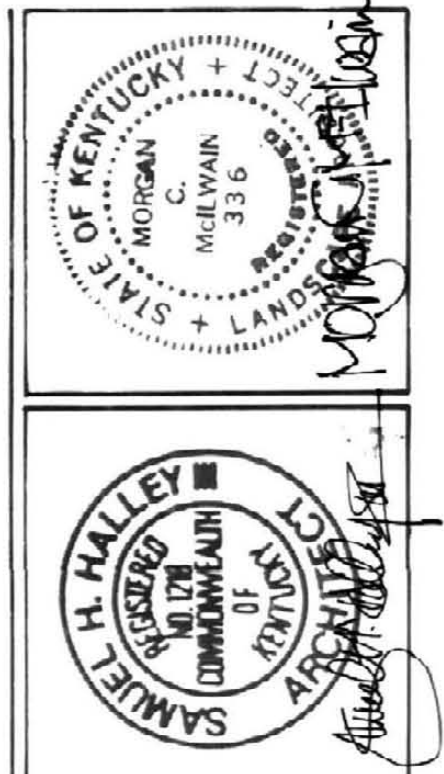
NOTES
• SEE SHEET #10 FOR LAYOUT
AND IMPROVEMENTS NOTES
• SEE SHEET #12 FOR SYMBOLS
AND ABBREVIATIONS

SITE LAYOUT & IMPROVEMENTS PLAN

SCALE: 1" = 20'



BID PACKAGE #1



OMNI/CMW Joint Venture Architects
In Association with Hellmuth, Obata, & Kassabaum
Civil Architects 2385 Hammondsburg Road, Lexington, KY 40504 Ph: 606-223-3045
Chickner-Miller-Woodford 358 S. Broadway, Lexington, KY 40506 Ph: 606-554-8823

Site Layout and Improvements Plan
HOSPITAL EXPANSION & RENOVATION
A. B. CHANDLER MEDICAL CENTER
PROJECT NO. 304.1

University of Kentucky
Design & Construction
Approval
[Signature]
Director

Date: JUN 14
Drawn by: JGS
Check by: JLT
Revisions:

RS-5
HOSPITAL ADDITION