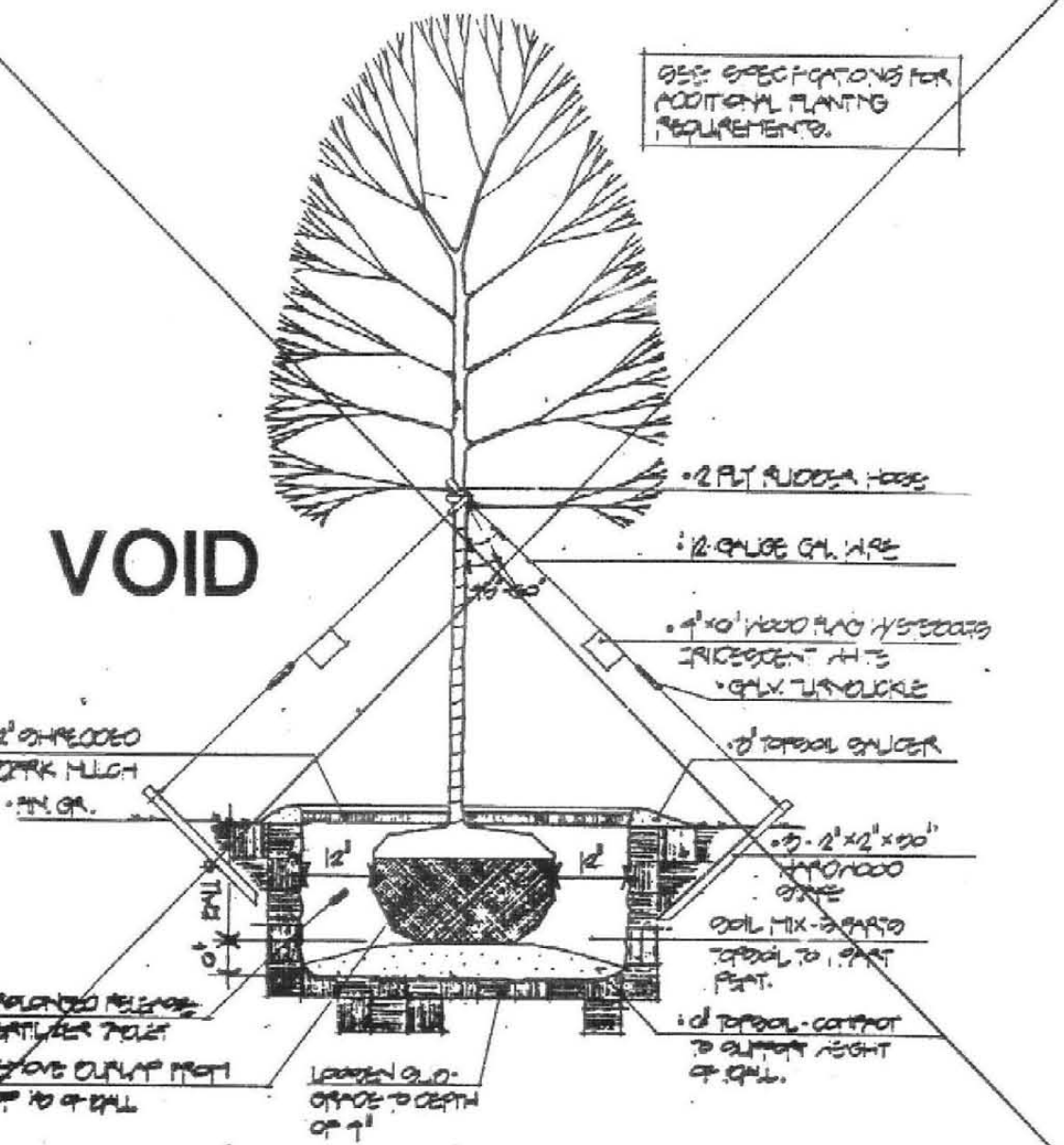
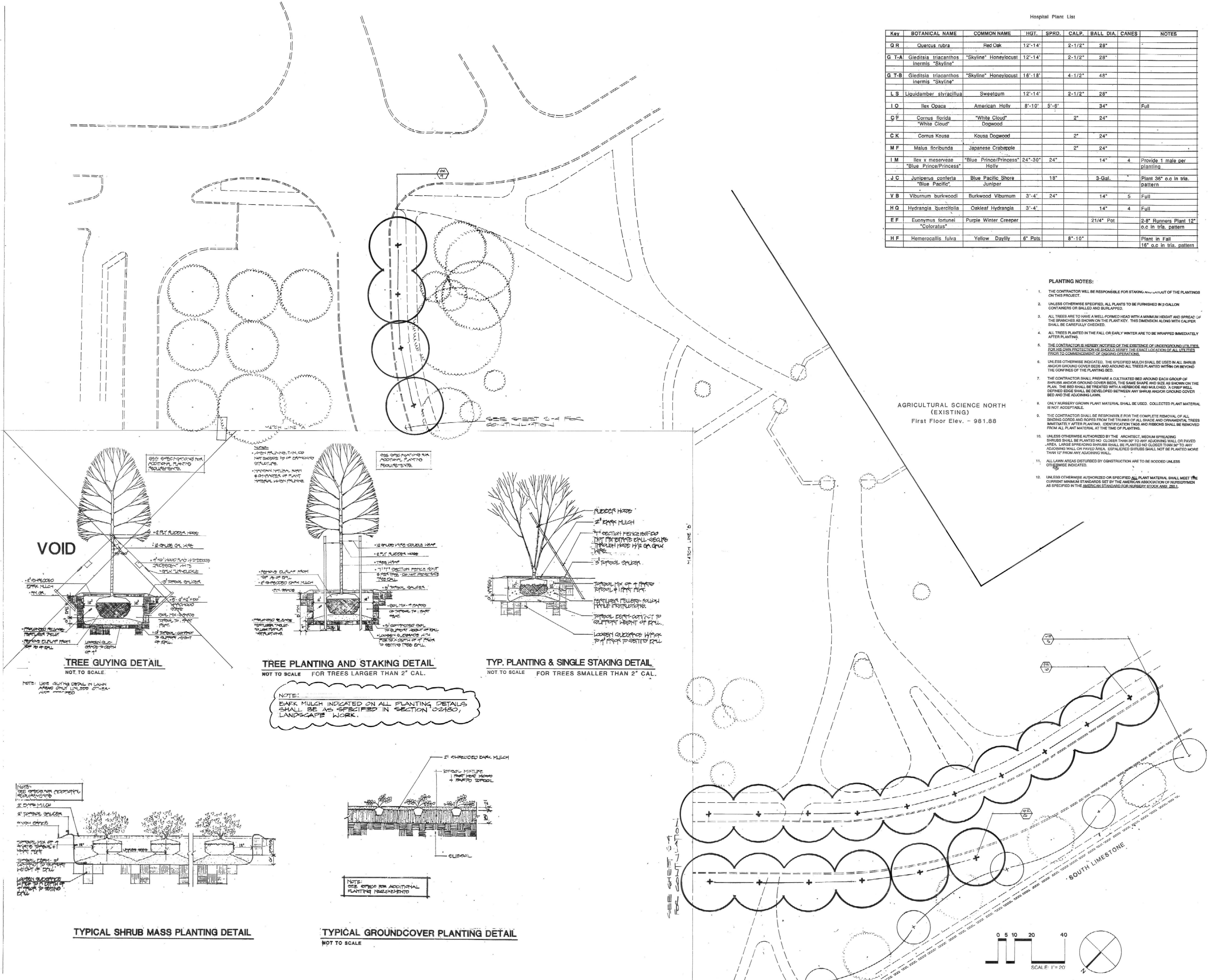


Key	BOTANICAL NAME	COMMON NAME	HGT.	SPRD.	CALP.	BALL DIA.	CANES	NOTES
Q R	Quercus rubra	Red Oak	12'-14'		2'-1/2"	28"		
G T-A	Gleditsia triacanthos inermis "Skyline"	"Skyline" Honeylocust	12'-14'		2'-1/2"	28"		
G T-B	Gleditsia triacanthos inermis "Skyline"	"Skyline" Honeylocust	16'-18'		4'-1/2"	48"		
L S	Liquidambar styraciflua	Sweetgum	12'-14'		2'-1/2"	28"		
I O	Ilex Opaca	American Holly	8'-10'	5'-6"		34"		Full
C F	Cornus florida "White Cloud"	"White Cloud" Dogwood			2"	24"		
C K	Cornus Kousa	Kousa Dogwood			2"	24"		
M F	Malus floribunda	Japanese Crabapple			2"	24"		
I M	Ilex x meserveae "Blue Prince/Princess"	"Blue Prince/Princess" Holly	24"-30"	24"		14"	4	Provide 1 male per planting
J C	Juniperus conferta "Blue Pacific"	Blue Pacific Shore Juniper			18"		3-Gal.	Plant 36" o.c in tria. pattern
V B	Viburnum burkwoodi	Burkwood Viburnum	3'-4'	24"		14"	5	Full
H Q	Hydrangia quercifolia	Oakleaf Hydrangia	3'-4'			14"	4	Full
E F	Euonymus fortunei "Coloratus"	Purple Winter Creeper				2 1/4"	Pot	2-8" Runners Plant 12" o.c in tria. pattern
H F	Hemerocallis fulva	Yellow Daylily	6" Pots		8"-10"			Plant in Fall 16" o.c in tria. pattern

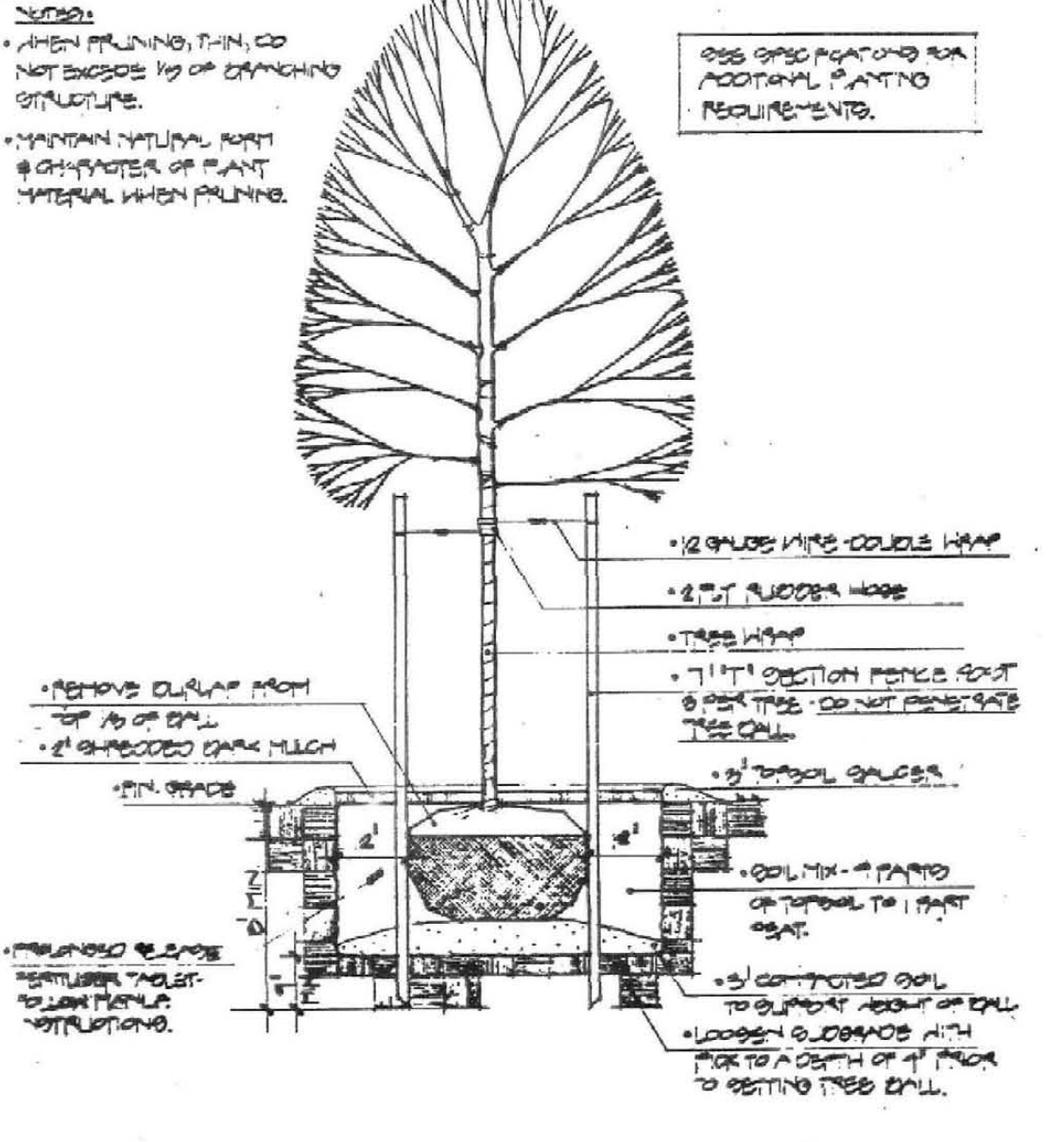
**PLANTING NOTES:**

1. THE CONTRACTOR WILL BE RESPONSIBLE FOR STAKING AND LAYOUT OF THE PLANTINGS ON THIS PROJECT.
2. UNLESS OTHERWISE SPECIFIED, ALL PLANTS TO BE FURNISHED IN 2-GALLON CONTAINERS OR BALLED AND BURLAPPED.
3. ALL TREES ARE TO HAVE A WELL FORMED HEAD WITH A MINIMUM HEIGHT AND SPREAD OF THE BRANCHES AS SHOWN ON THE PLANT KEY. THIS DIMENSION ALONG WITH CALIPER SHALL BE CAREFULLY CHECKED.
4. ALL TREES PLANTED IN THE FALL OR EARLY WINTER ARE TO BE WRAPPED IMMEDIATELY AFTER PLANTING.
5. THE CONTRACTOR IS HEREBY NOTIFIED OF THE EXISTENCE OF UNDERGROUND UTILITIES. FOR HIS OWN PROTECTION HE SHOULD VERIFY THE EXACT LOCATION OF ALL UTILITIES PRIOR TO COMMENCEMENT OF DIGGING OPERATIONS.
6. UNLESS OTHERWISE INDICATED, THE SPECIFIED MULCH SHALL BE USED IN ALL SHRUB AND/OR GROUND COVER BEDS AND AROUND ALL TREES PLANTED WITHIN OR BEYOND THE CONFINES OF THE PLANTING BED.
7. THE CONTRACTOR SHALL PREPARE A CULTIVATED BED AROUND EACH GROUP OF SHRUBS AND/OR GROUND COVER BEDS, THE SAME SHAPE AND SIZE AS SHOWN ON THE PLAN. THE BED SHALL BE TREATED WITH A HERBICIDE AND MULCHED. A CRISP WILL DEFINED EDGE SHALL BE DEVELOPED BETWEEN ANY SHRUB AND/OR GROUND COVER BED AND THE ADJOINING LAWN.
8. ONLY NURSERY GROWN PLANT MATERIAL SHALL BE USED. COLLECTED PLANT MATERIAL IS NOT ACCEPTABLE.
9. THE CONTRACTOR SHALL BE RESPONSIBLE FOR THE COMPLETE REMOVAL OF ALL BRIDING CORDS AND PROPS FROM THE TRUNKS OF ALL SHRUB AND ORNAMENTAL TREES IMMEDIATELY AFTER PLANTING. IDENTIFICATION TAGS AND RIBBONS SHALL BE REMOVED FROM ALL PLANT MATERIAL AT THE TIME OF PLANTING.
10. UNLESS OTHERWISE AUTHORIZED BY THE ARCHITECT, MEDIUM SPREADING SHRUBS SHALL BE PLANTED NO CLOSER THAN 30" TO ANY ADJOINING WALL OR PAVED AREA. LARGE SPREADING SHRUBS SHALL BE PLANTED NO CLOSER THAN 30" TO ANY ADJOINING WALL OR PAVED AREA. ESPALIERED SHRUBS SHALL NOT BE PLANTED MORE THAN 12" FROM ANY ADJOINING WALL.
11. ALL LAWN AREAS DISTURBED BY CONSTRUCTION ARE TO BE SOODED UNLESS OTHERWISE INDICATED.
12. UNLESS OTHERWISE AUTHORIZED OR SPECIFIED ALL PLANT MATERIAL SHALL MEET THE CURRENT MINIMUM STANDARDS SET BY THE AMERICAN ASSOCIATION OF NURSERYMEN AS SPECIFIED IN THE AMERICAN STANDARD FOR NURSERY STOCK ANSI Z60.1.

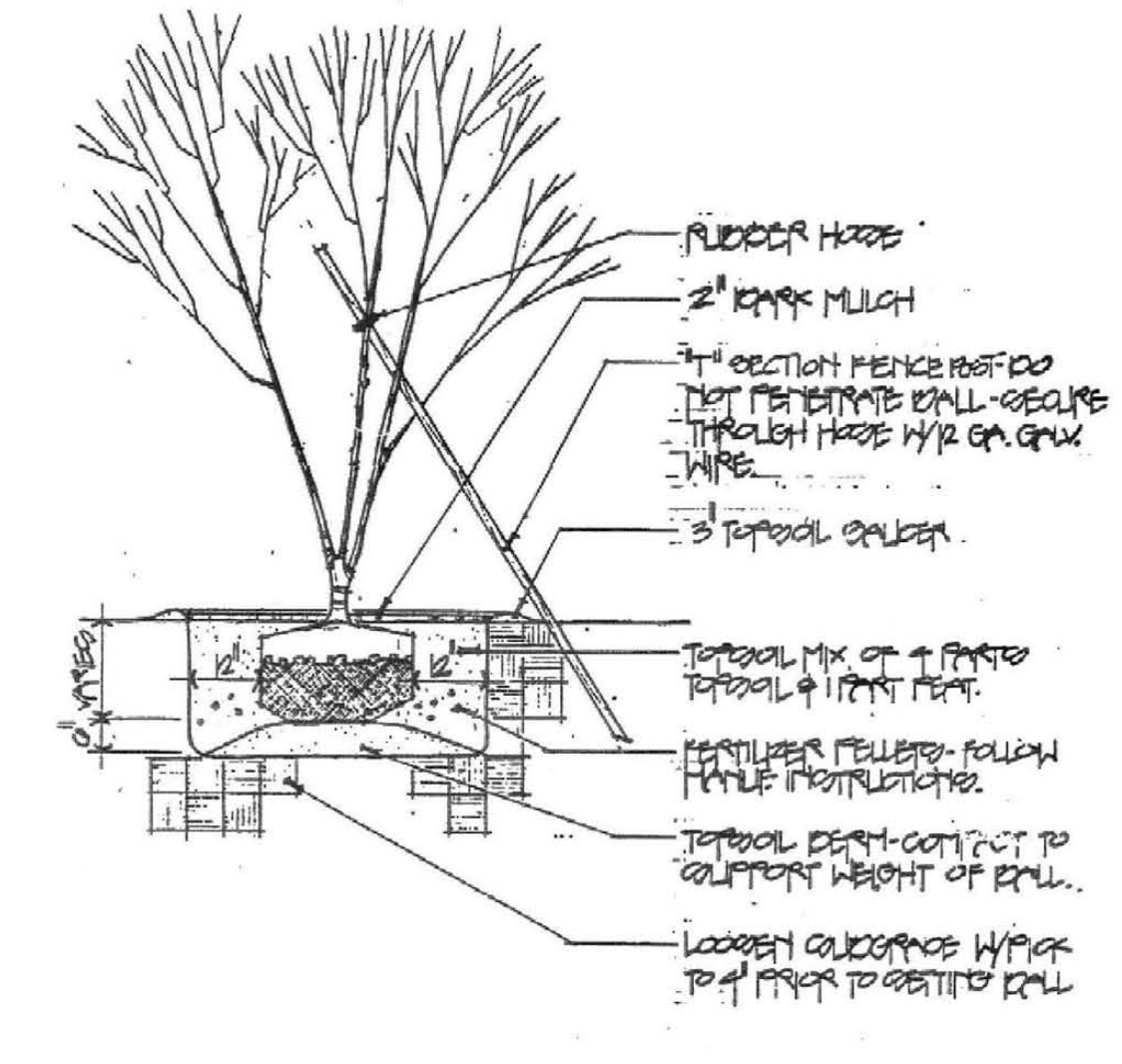
AGRICULTURAL SCIENCE NORTH (EXISTING)  
First Floor Elev. - 981.88



**TREE GUYING DETAIL**  
NOT TO SCALE.

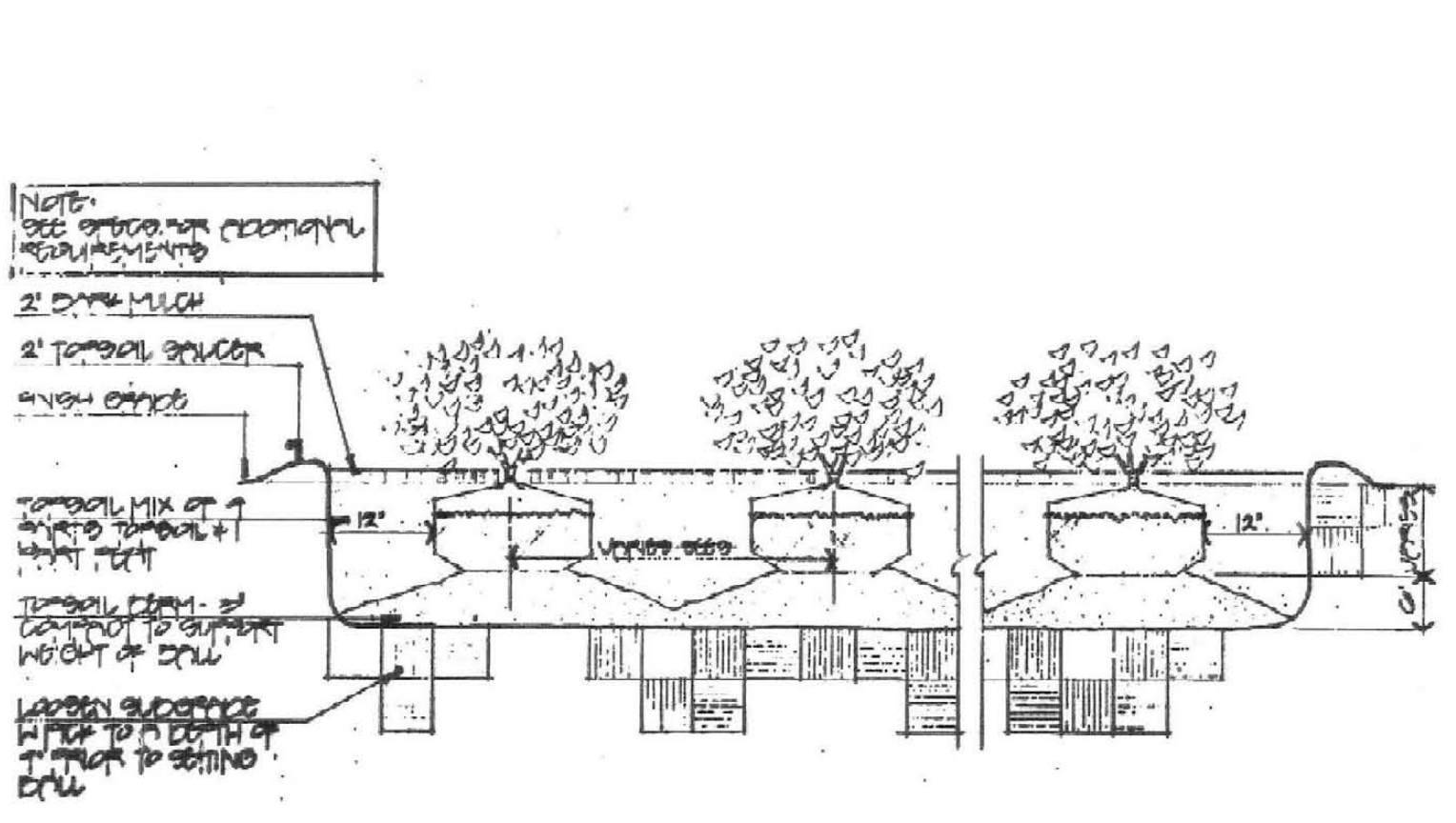


**TREE PLANTING AND STAKING DETAIL**  
NOT TO SCALE FOR TREES LARGER THAN 2\"/>

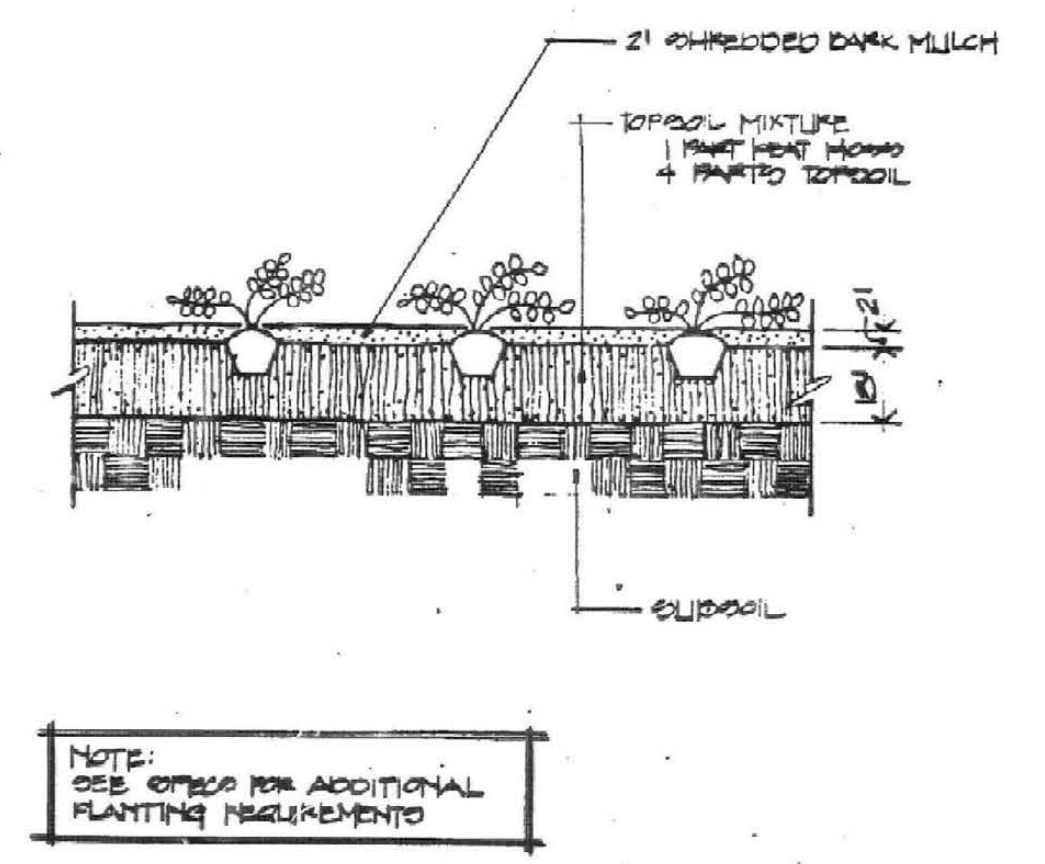


**TYP. PLANTING & SINGLE STAKING DETAIL**  
NOT TO SCALE FOR TREES SMALLER THAN 2\"/>

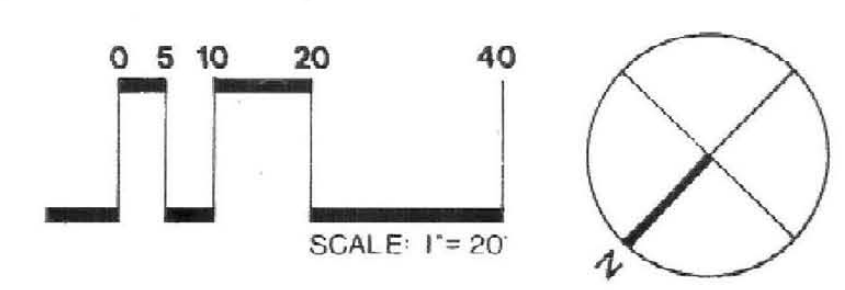
NOTE:  
BARK MULCH INDICATED ON ALL PLANTING DETAILS SHALL BE AS SPECIFIED IN SECTION 02400, LANDSCAPE WORK.



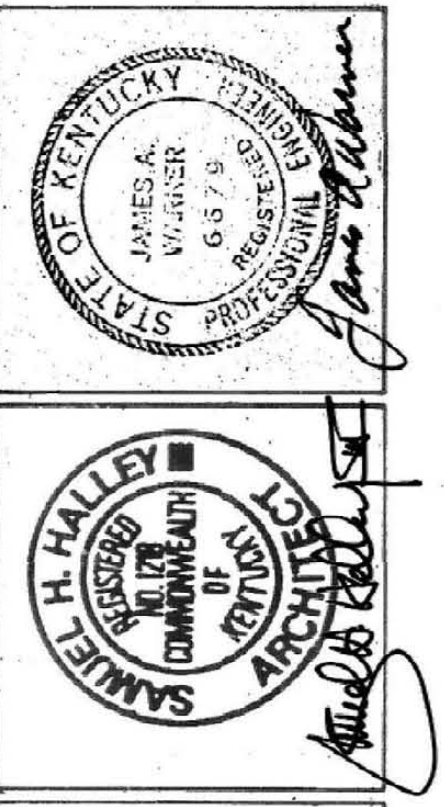
**TYPICAL SHRUB MASS PLANTING DETAIL**



**TYPICAL GROUNDCOVER PLANTING DETAIL**  
NOT TO SCALE



ALBERT B. CHANDLER MEDICAL CENTER UNIVERSITY OF KENTUCKY HOSPITAL EXPANSION & RENOVATION



OMNI/CMW Joint Venture Architects  
In Association with Hellmuth, Obata & Kassabaum  
Omni Architects 2955 Harrodsburg Road, Lexington, KY 40504, PH 606-223-3045  
Chesman-Miller-Woodford 326 S. Broadway, Lexington, KY 40508, PH 606-544-6623

**SITE PLANTING PLAN**  
HOSPITAL EXPANSION & RENOVATION  
ALBERT B. CHANDLER MEDICAL CENTER  
PROJECT NO. 304.1

University of Kentucky  
Design & Construction  
Approval  
*Wendy Kamm*  
1988

Date: DEC 07  
Drawn by: CMA  
Check by: MZ  
Revisions:

**S-5**  
HOSPITAL ADDITION